

Output DLIS Files

Type:DEFAULT File ID:LWD_DVM_MWD_030SD#N:28 05-Jun-2006 20:04 PRODUCER

IDEAL

DV

SONIC-675	id10_2c_01	MWD_10-A	id10_2c_01
Format: ISONIC_BHC_Log_1	Vertical Scale: 1:200	Graphics	
Description of ISONIC 67 Parameters (ISONIC 67 Version 2.00)			

Description of ISONIC_97 Parameters (ISONIC_97 Version 3.00)		
Readout Port to Bit Distance	54.83	FT

Start Time	562.82
End Time	1288.83

Start Depth	3422.22	FT
End Depth	4567.42	FT
Minimum ROP	0.10	FT/IN
Delta T Resolution	3.00	FT
Maximum Deviation	4.00	IN
Number of Least Square Iterations	20	
Number of Receivers	4	
Waveform Ignored in Processing	None	
Coherence Cutoff Value for DTCC	0.70	
Number of Samples	151	
Inter-Receiver Distance	8.00	IN
Transmitter to 1st Receiver Distance	9.85	FT
Sample Period	20.00	US
Digitized Delay (ddee)	300.00	US
Time Window Width	240.00	US
Time Window Step	80.00	US
Search Band Inset	400.00	US
Search Band Width	1120.00	US
1/2 Peak Mask Width	500.00	US
Cutoff Semblance on Coarse Slowness Grid	0.35	
Cutoff Semblance on Fine Slowness Grid	0.45	
Center Frequency of Modulation	13.00	kHz
Maximum Number of Allowed Peaks	4	
Number of Buffered Peak Frames	7	
Low Semblance Cost	3.00	
Delta Slowness Cost	3.00	
Delta Arrival Time Cost	1.00	
Delta ST Line Cost	1.00	
Late Arrival Cost	1.00	
Spike Threshold	15.00	US/F
Filter Bandwidth	15.00	US/F
Noise Window Start Time	500.00	US
Noise Window End Time	2000.00	US
Noise Window Moveout	0.00	US/F
Signal Window Start Time	1200.00	US
Signal Window End Time	1700.00	US
Signal Window Moveout	100.00	US/F
Integrated Transit Time Source	DTRA	
Porosity Formula	Raymer-Hunt	
Sonic Delta T Source	DTRA	
Rock Matrix Delta T	55.50	US/F
Mud Delta T (Wyllie only)	189.00	US/F
Correction Factor (Wyllie only)	1.00	

p: D:\users\ideal\m\clients\LEDO\KGHH01\LDW002\SON669\TIME_BIN.D
 r: D:\users\ideal\m\clients\LEDO\KGHH01\LDW002\edited_DEPTH_SON
 : None

PIP SUMMARY

Time Every 1 MS		
Time Every 10 MS		
	Delta-T Compensational Borehole Compensated (Depth Derived) (DTBC)	
240	(US/F)	40

**Delta-T Compensational from
Transmitter Array (DTTA)**

Min

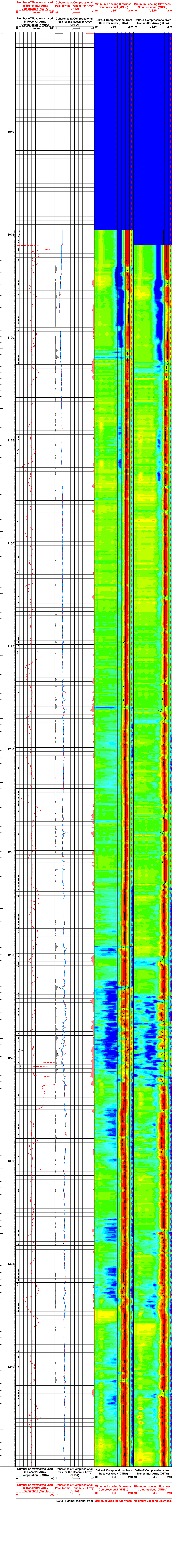
Amplitude

Max

240	(US/F)	40	0	RCVR Projection	1	0
			40	(STRA)		
				(US/F)	240	40
Delta-T Compressional from				Maximum Labeling Slowness, Max		

ray (DTRA)	
:/E)	40

	P
	240



Delta-T Compressional from Receiver Array (DTRA)		Maximum Labeling Slowness, Compressional (MXSL)		Maximum Labeling Slowness, Compressional (MXSL)	
240	(US/F)	40	40	240	40
Delta-T Compressional from Transmitter Array (DTTA)		RCVR Projection (STRA)		TRSM Projection (STTA)	
240	(US/F)	40	1	0	1
Delta-T Compressional Borehole Compensated (Depth Derived) (DTBC)					
240	(US/F)	40	240	40	240
PIP SUMMARY					
ISONIC Integrated Transit Time Every 1 MS					
ISONIC Integrated Transit Time Every 10 MS					
ISONIC Samples					
IDEAL Version: ID10_2C_01.1SV					
IDEAL					
RAB6-CA	id10_2c_01	DVM-675	id10_2c_01		
SONIC-675	id10_2c_01	MWD_10-A	id10_2c_01		
Output DLIS Files					
Type:DEFAULT	File ID:LWD_DVM_MWD_030SD	FN:28	05-Jun-2006 20:04	PRODUCER	1026.6 M 1374.8 M