

Input DLIS Files

Type: **WELL DISPLAY** File ID: **LWD_DVM_MWD_MRT_006SEN** 25-May-2006 17:08 PRODUCER 3080.0 FT 3761.5 FT

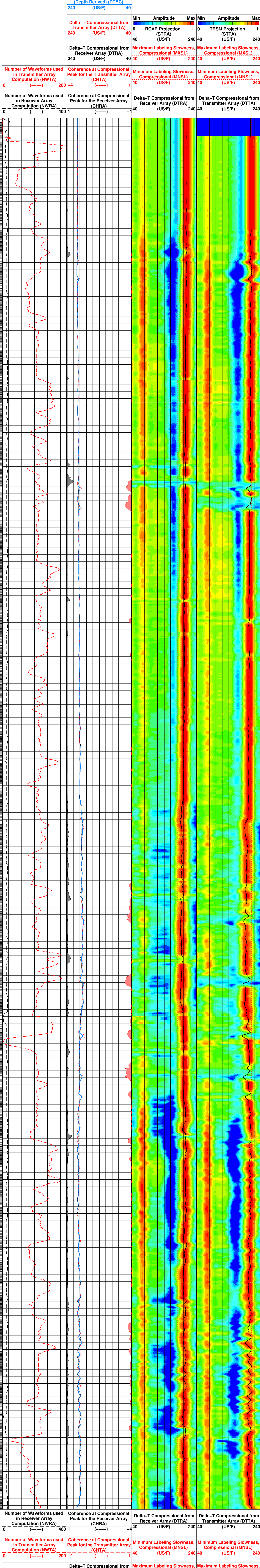
IDEAL version: ID10_2C_01.ISV
IDF

5

SON675	id10_2c_01	MWD_10	id10_2c_01
MRT	id10_2c_01		
Format: ISONIC BHC Log Vertical Scale: 1:200			Graphics

PIP SUMMARY

ISONIC Samples	
	De
	Bo
	(D



Receiver Array (DTRA)		Compressional (MXSL)		Compressional (MXSL)	
240	(US/F)	40	(US/F)	240	(US/F)
		Min	Amplitude	Max	Min
Delta-T Compressional from					

<div>Delta-T Compressional from Transmitter Array (DTTA)</div> <div>240 (US/F) 40</div>		<div>0 RCVR Projection (STRA) (US/F) 40</div>	<div>1 TRSM Projection (STTA) (US/F) 240</div>
<div>Delta-T Compressional Borehole Compensated (Depth Derived) (DTBC)</div> <div>240 (US/F) 40</div>			

PIP SUMMARY

└ ISONIC Integrated Transit Time Every 1 MS

└ ISONIC Integrated Transit Time Every 10 MS

└ ISONIC Samples

IDEAL Version: ID10_2C_01.1SV

IDF

RAB	id10_2c_01	ECO6	id10_2c_01
SON675	id10_2c_01	MWD_10	id10_2c_01
MRT	id10_2c_01		

Input DLIS Files

Type	WELLID	File ID	LWD_DVM_MWD_MRT_006SEP5	DATE	25-May-2006 17:08	PRODUCER	3080.0 FT	3761.5 FT
------	--------	---------	-------------------------	------	-------------------	----------	-----------	-----------