

COMPANY: Lamont Doherty

WELL: ODP Leg 193, Site 1188F (PCM-2A)

FIELD: Manus Basin, Snowcap

COUNTY: Offshore STATE: Bismarck Sea

**Schlumberger**  
Mud Temperature  
Gamma Ray Downlog

COUNTY: Offshore  
Field: Manus Basin, Snowcap  
Location: ODP Leg 193, Site 1188F (PCM-2A)  
Company: Lamont Doherty

LOCATION			
Permanent Datum: _____	MSL	Elev.: _____	K.B. 11.3 m
Log Measured From: _____	Drill Floor	11.0 m above Perm. Datum	G.L. -1653 m
Drilling Measured From: _____	Drill Floor	Elev.: 0 m	D.F. 11 m
API Serial No. _____	LATITUDE: 03° 43.6850' S	LONGITUDE: 151° 40.1909' E	RIG: _____
			JOIDES Resolution

	Run 1	Run 2	Run
Logging Date			
Run Number			
Depth Driller			
Schlumberger Depth			
Bottom Log Interval			
Top Log Interval			
Casing Driller Size @ Depth			
Casing Schlumberger			
Bit Size			
Type Fluid In Hole			
Density			
Fluid Loss			
PH			
Source Of Sample			
RM @ Measured Temperature			
RMF @ Measured Temperature			
RMC @ Measured Temperature			
Source RMF			
RM @ MRT			
RMF @ MRT			
Maximum Recorded Temperatures			
Circulation Stopped			
Time			
Logger On Bottom			
Time			
Unit Number			
Location			
Recorded By			
Kerry M. Swain			
Witnessed By			
Gerardo Iturrino, Anne Bartetzko			

Logging Date	27-DEC-2000
Run Number	2
Depth Driller	2039.7 m
Schlumberger Depth	2008 m
Bottom Log Interval	2008 m
Top Log Interval	1600 m
Casing Driller Size @ Depth	0.000 in @ 1843 m
Casing Schlumberger	1843 m
Bit Size	7.250 in
Type Fluid In Hole	Seawater
Density	1.1 g/cm3
Fluid Loss	PH
Source Of Sample	Seawater
RM @ Measured Temperature	0.180 ohm.m @ 30 degC
RMF @ Measured Temperature	0.235 ohm.m @
RMC @ Measured Temperature	@
Source RMF	RMC
RM @ MRT	0.031 @ 282
RMF @ MRT	@ 282
Maximum Recorded Temperatures	282 degC
Circulation Stopped	20-Dec-2000
Time	22:00
Logger On Bottom	27-DEC-2000
Time	4:00
Unit Number	99
Location	Houston ODP
Recorded By	Kerry M. Swain
Witnessed By	Gerardo Iturrino, Anne Bartetzko

Logging Date	
Run Number	
Depth Driller	
Schlumberger Depth	
Bottom Log Interval	
Top Log Interval	
Casing Driller Size @ Depth	
Casing Schlumberger	
Bit Size	
Type Fluid In Hole	
Density	
Fluid Loss	
PH	
Source Of Sample	
RM @ Measured Temperature	
RMF @ Measured Temperature	
RMC @ Measured Temperature	
Source RMF	
RM @ MRT	
RMF @ MRT	
Maximum Recorded Temperatures	
Circulation Stopped	
Time	
Logger On Bottom	
Time	
Unit Number	
Location	
Recorded By	
Kerry M. Swain	
Witnessed By	
Gerardo Iturrino, Anne Bartetzko	

**DISCLAIMER**

THE USE OF AND RELIANCE UPON THIS RECORDED-DATA BY THE HEREIN NAMED COMPANY (AND ANY OF ITS AFFILIATES, PARTNERS, REPRESENTATIVES, AGENTS, CONSULTANTS AND EMPLOYEES) IS SUBJECT TO THE TERMS AND CONDITIONS AGREED UPON BETWEEN SCHLUMBERGER AND THE COMPANY, INCLUDING: (a) RESTRICTIONS ON USE OF THE RECORDED-DATA; (b) DISCLAIMERS AND WAIVERS OF WARRANTIES AND REPRESENTATIONS REGARDING COMPANY'S USE OF AND RELIANCE UPON THE RECORDED-DATA; AND (c) CUSTOMER'S FULL AND SOLE RESPONSIBILITY FOR ANY INFERENCE DRAWN OR DECISION MADE IN CONNECTION WITH THE USE OF THIS RECORDED-DATA.

**OTHER SERVICES1**

OS1:  
OS2:  
OS3:  
OS4:  
OS5:

**OTHER SERVICES2**

OS1:  
OS2:  
OS3:  
OS4:  
OS5:

REMARKS: RUN NUMBER 1

REMARKS: RUN NUMBER 2

HGTC (HighTemp/High Pressure Gamma Ray Telemetry Cartridge) used for Temperature

with LEH-QO head and MTEM sensor.

Log presented in meters below rig floor. Sea floor at 1652 mbrf.

Wireline heave compensator used on all descents.

Sea water used as mud in hole.

Log TD at 2008 mbrf and tool could not reach drillers depth of 2039.7 mbrf.

Maximum temperature recorded from Maximum reading thermometer in head.

KTT temperature tool recorded 304 deg C at bottom before this run.

Head thermometer recorded approx. 540 deg. F on a 500 deg F scale.

MTEM measurement failed due to temperature.

Descent into hole after no circulation for 6 days.

**RUN 1**

SERVICE ORDER #:  
PROGRAM VERSION:  
FLUID LEVEL:

9C1-303  
0 m

**RUN 2**

SERVICE ORDER #:  
PROGRAM VERSION:  
FLUID LEVEL:

LOGGED INTERVAL

START

STOP

LOGGED INTERVAL

START

STOP

**EQUIPMENT DESCRIPTION**

**RUN 1**

**RUN 2**

**SURFACE EQUIPMENT**

WITM (DTS)-A

**DOWNHOLE EQUIPMENT**

LEH-MT  
LEH-MT 1



4.21

HTGC-B  
UDFH-KL 1062  
STGC0-A 8038  
STGC1-BH 8038  
MTEM 1

Mud Tempe

3.25

3.25

Gamma Ray

2.22

CTEM

1.36

TelStatus  
HV DF  
Tension ACCZ

0.00

TOOL ZERO

MAXIMUM STRING DIAMETER 3.75 IN  
MEASUREMENTS RELATIVE TO TOOL ZERO  
ALL LENGTHS IN METERS

### Input DLIS Files

DEFAULT HTGC-B.023 PRODUCER 02-Jan-2001 15:57 2009.1 M 1600.0 M

### Output DLIS Files

DEFAULT HTGC-B.025 FN:22 PRODUCER 02-Jan-2001 16:00 2009.1 M 1600.0 M

OP System Version: 9C1-303  
MCM

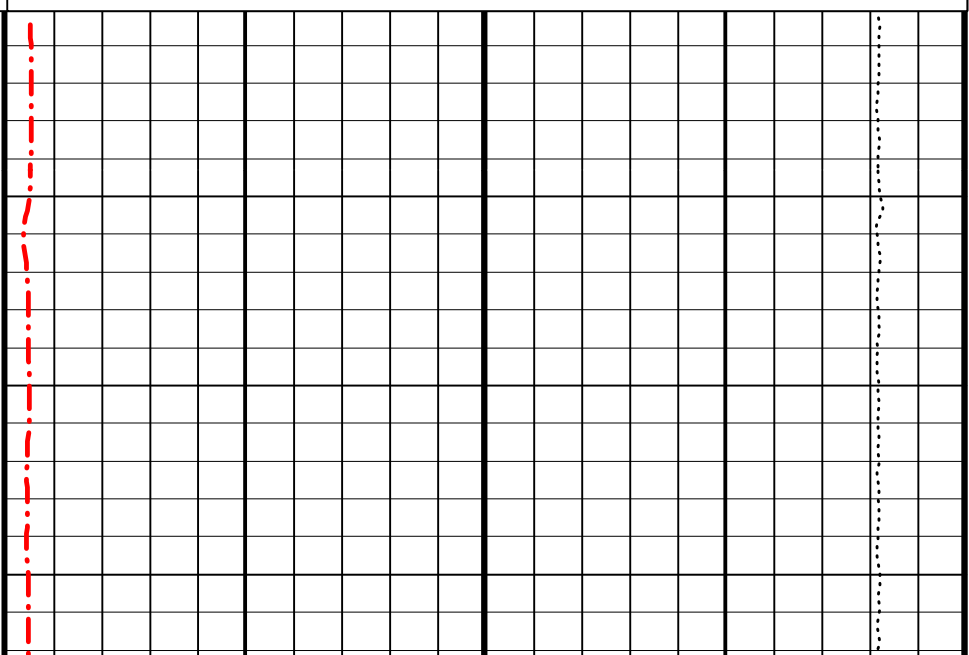
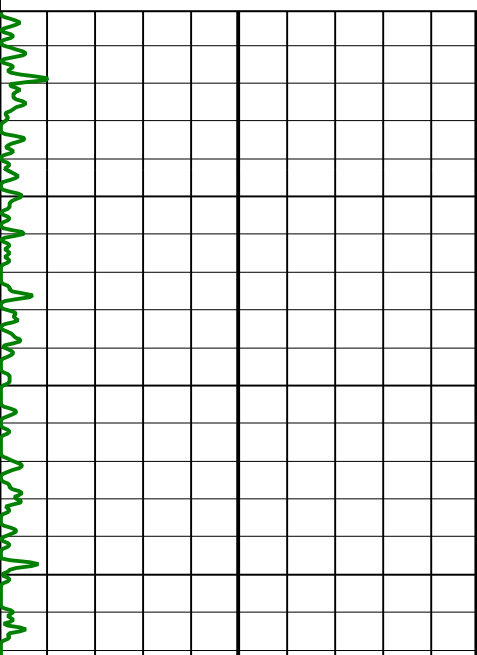
HTGC-B OP91-kp2

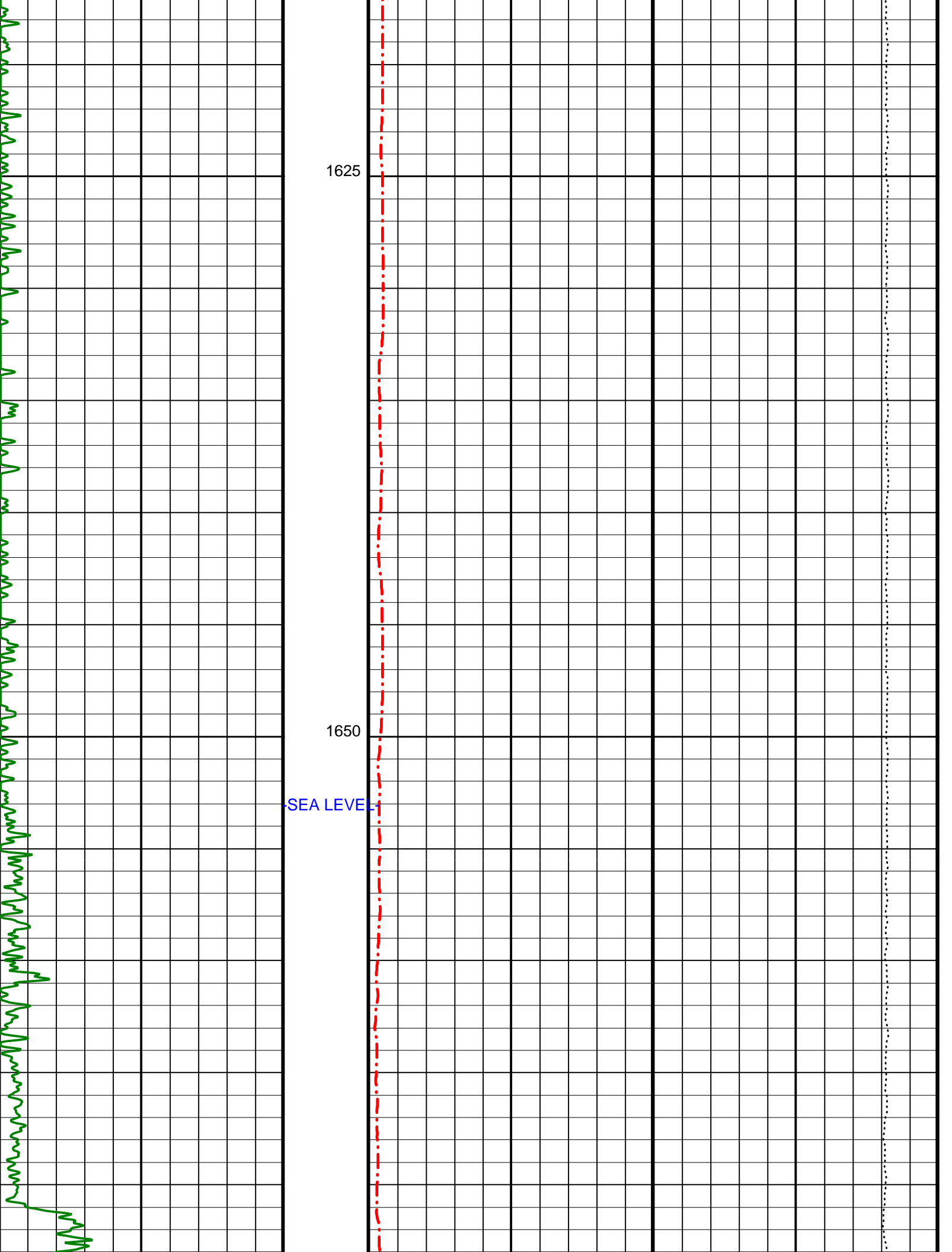
DOWNLOG

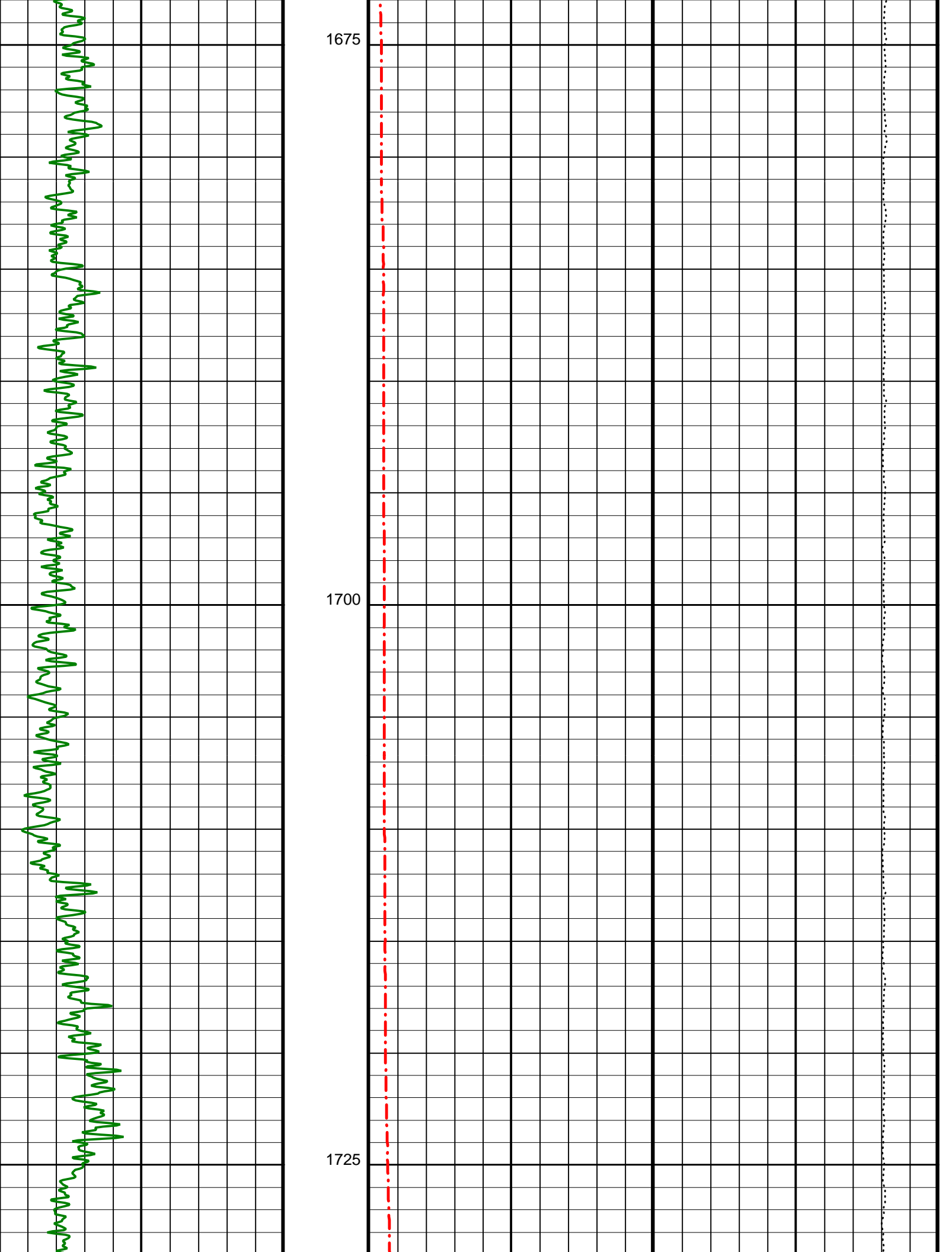
Tension (TENS)  
(LBF) 10000 0

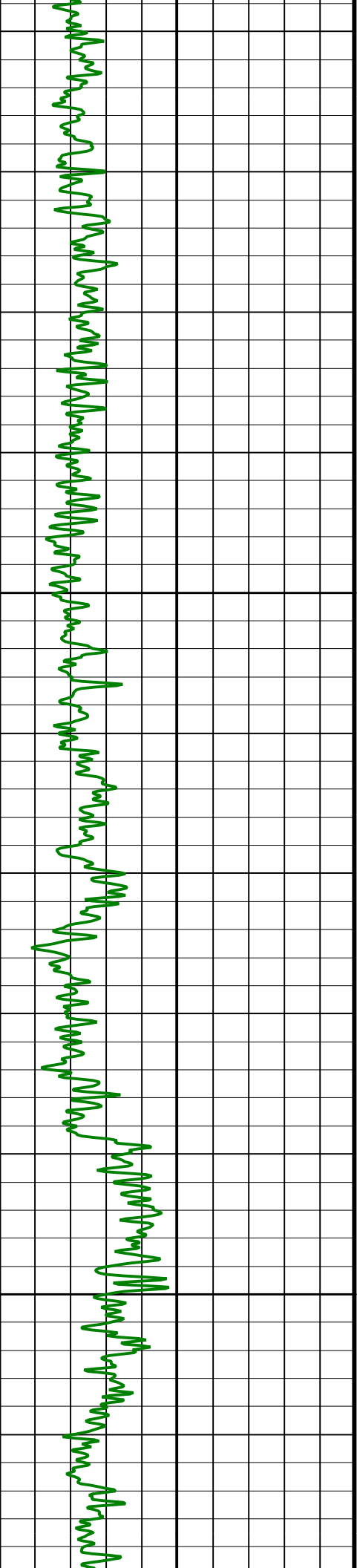
HiRes GammaRay (HGR\_STGC)  
(GAPI) 0 100

Mud temperature (MTEM)  
(DEGC) 0 200



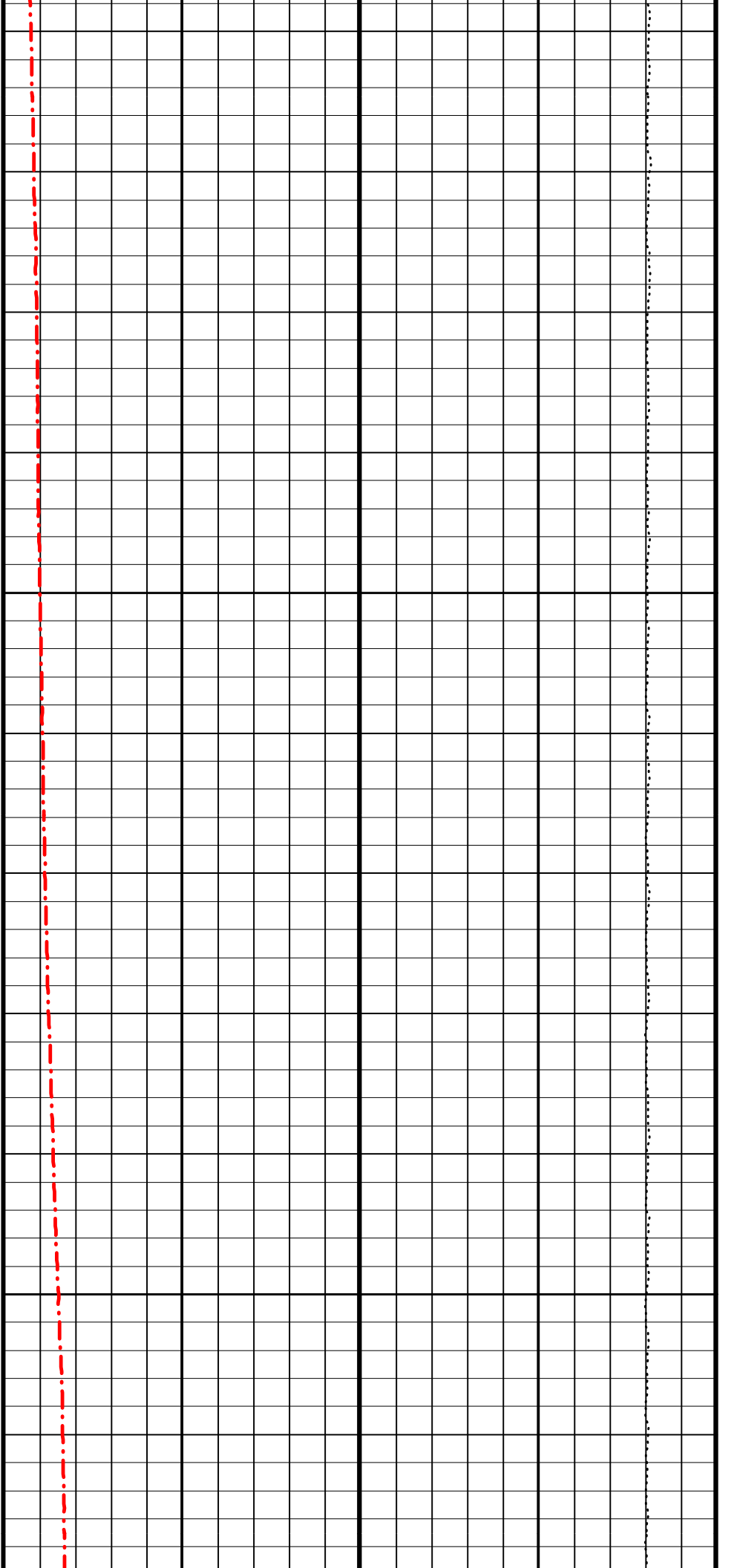


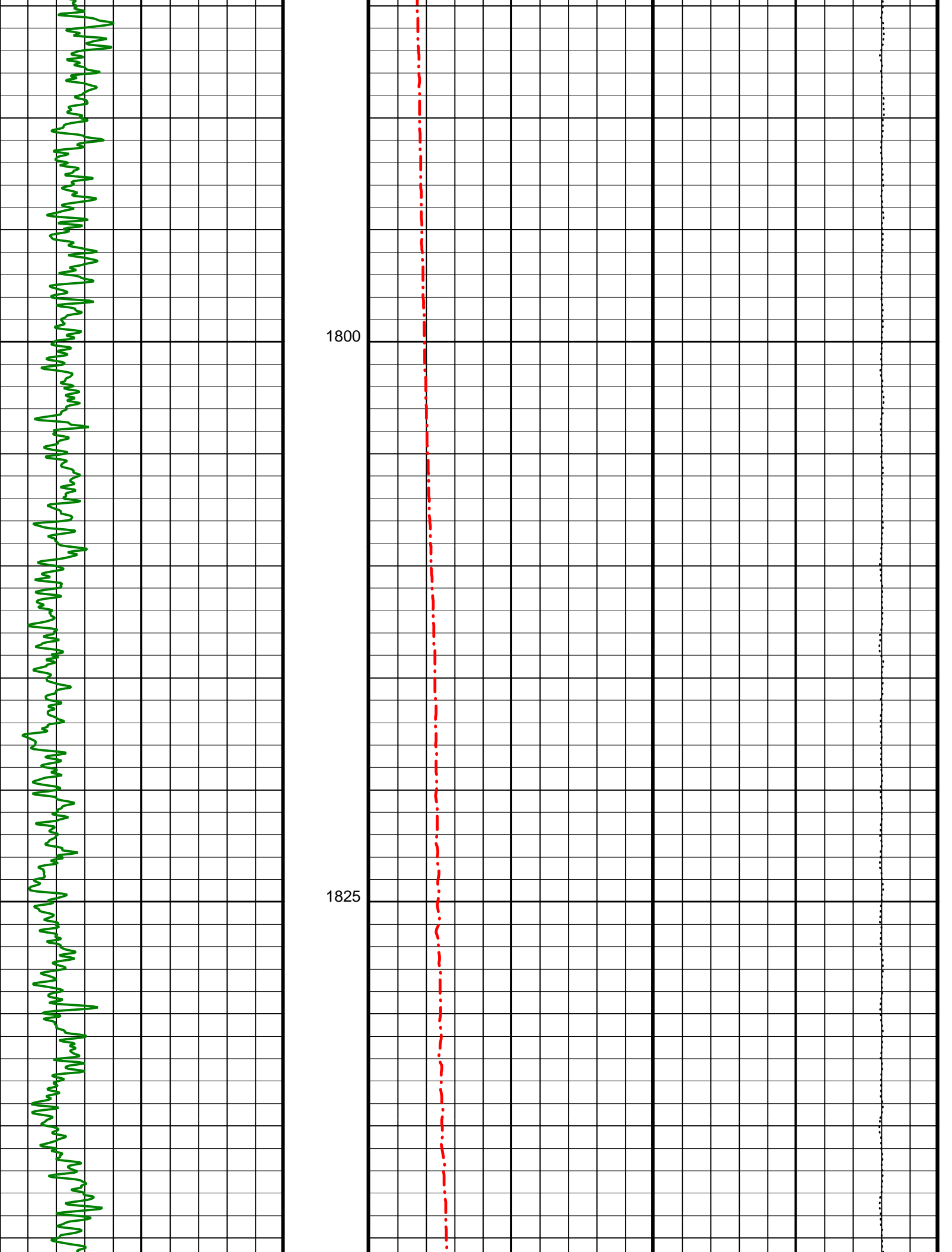




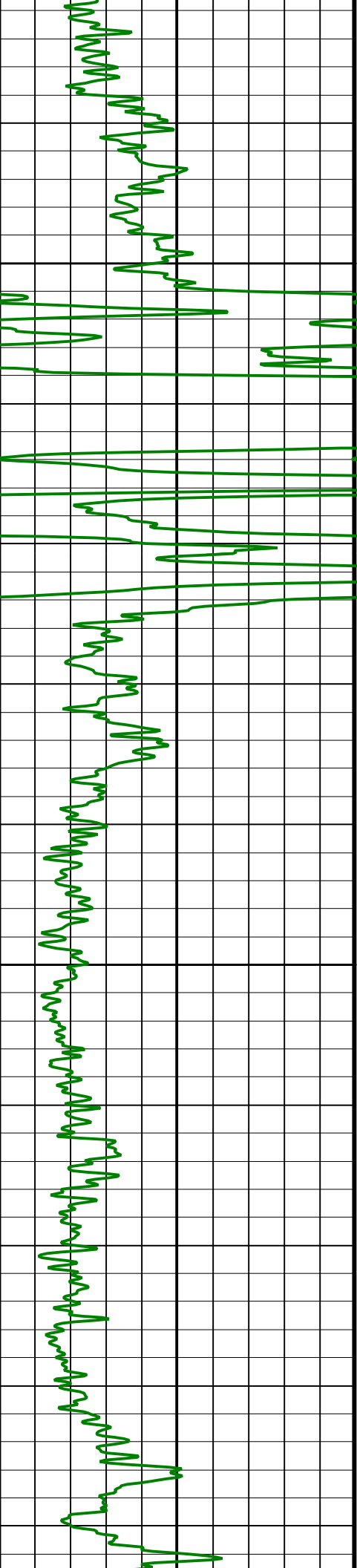
1750

1775





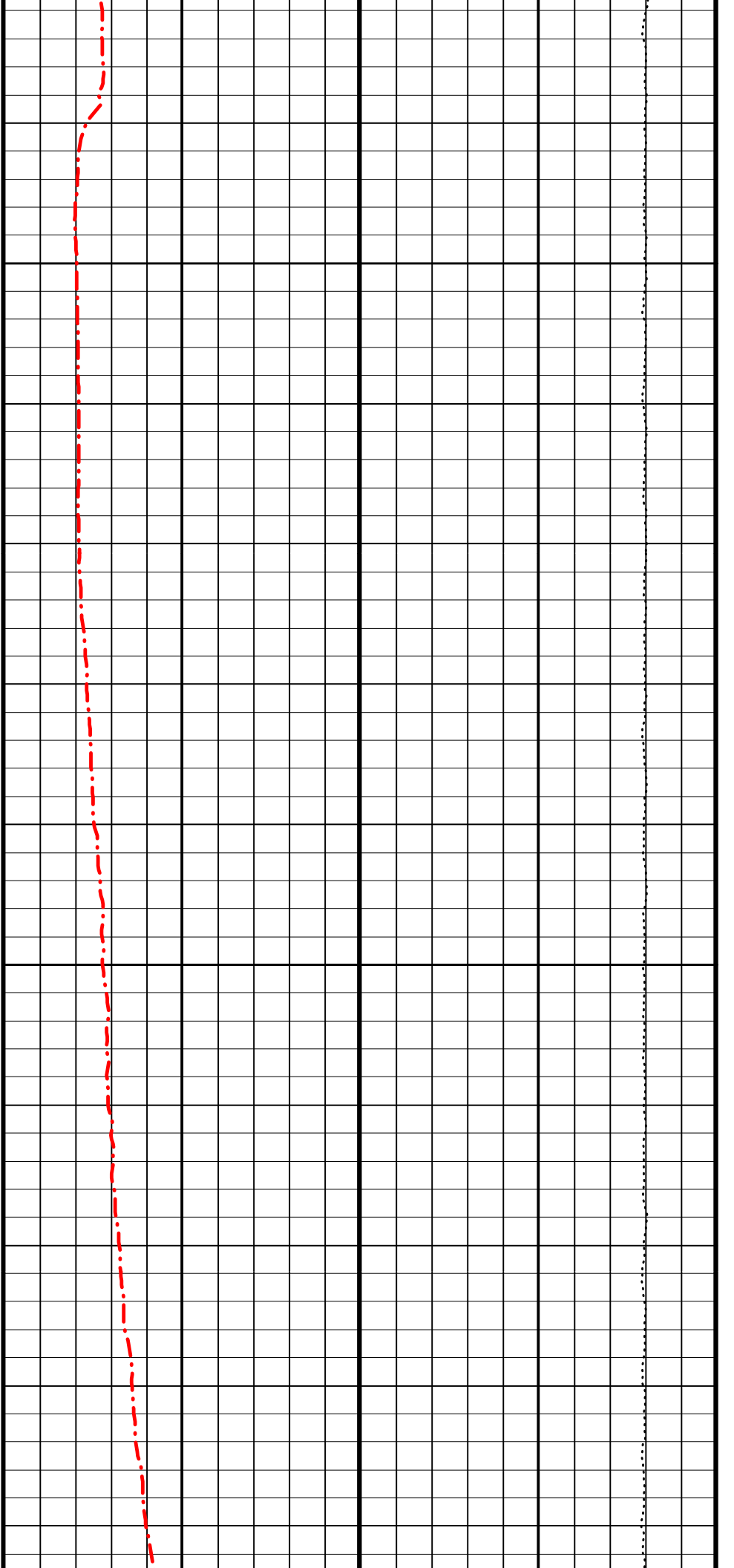


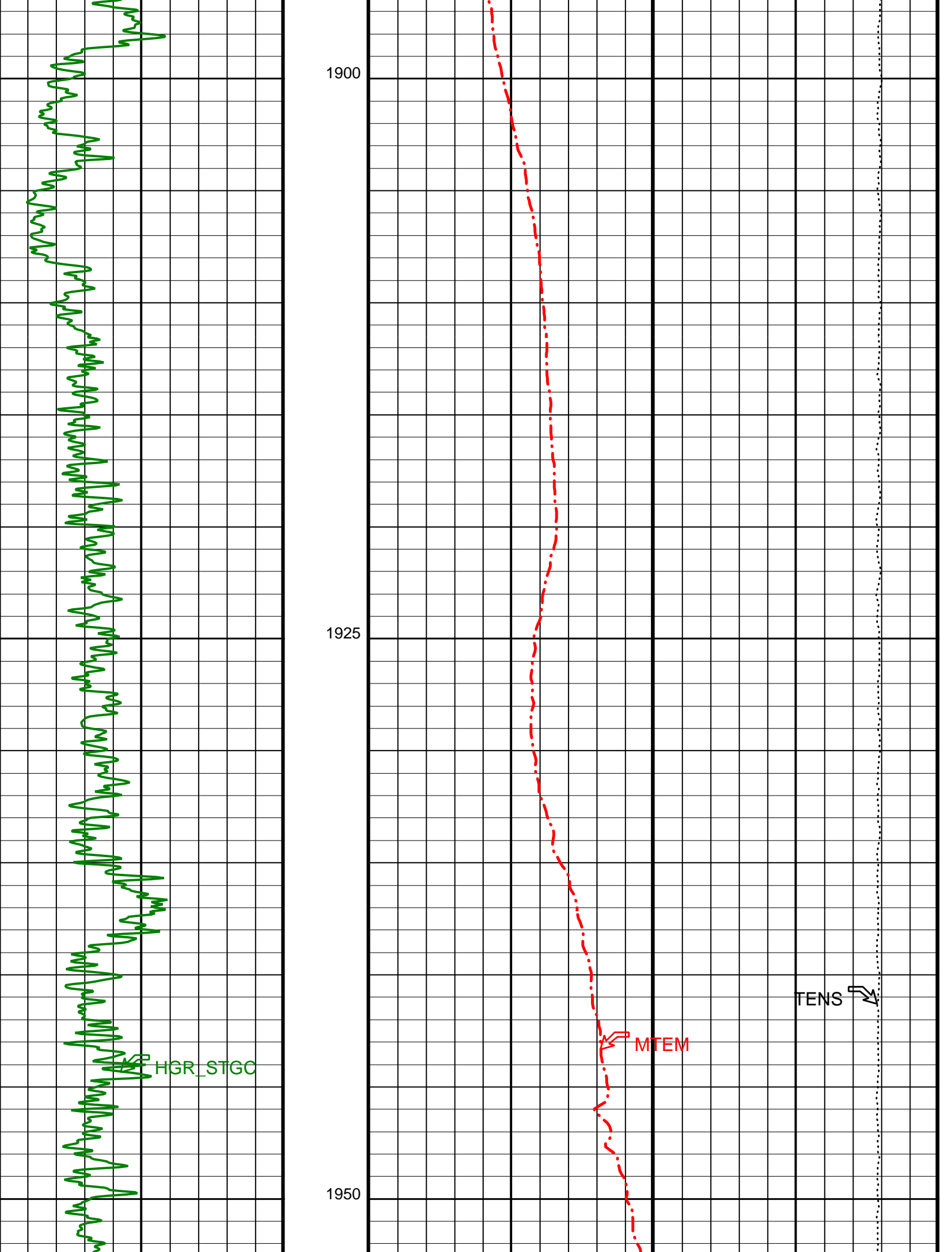


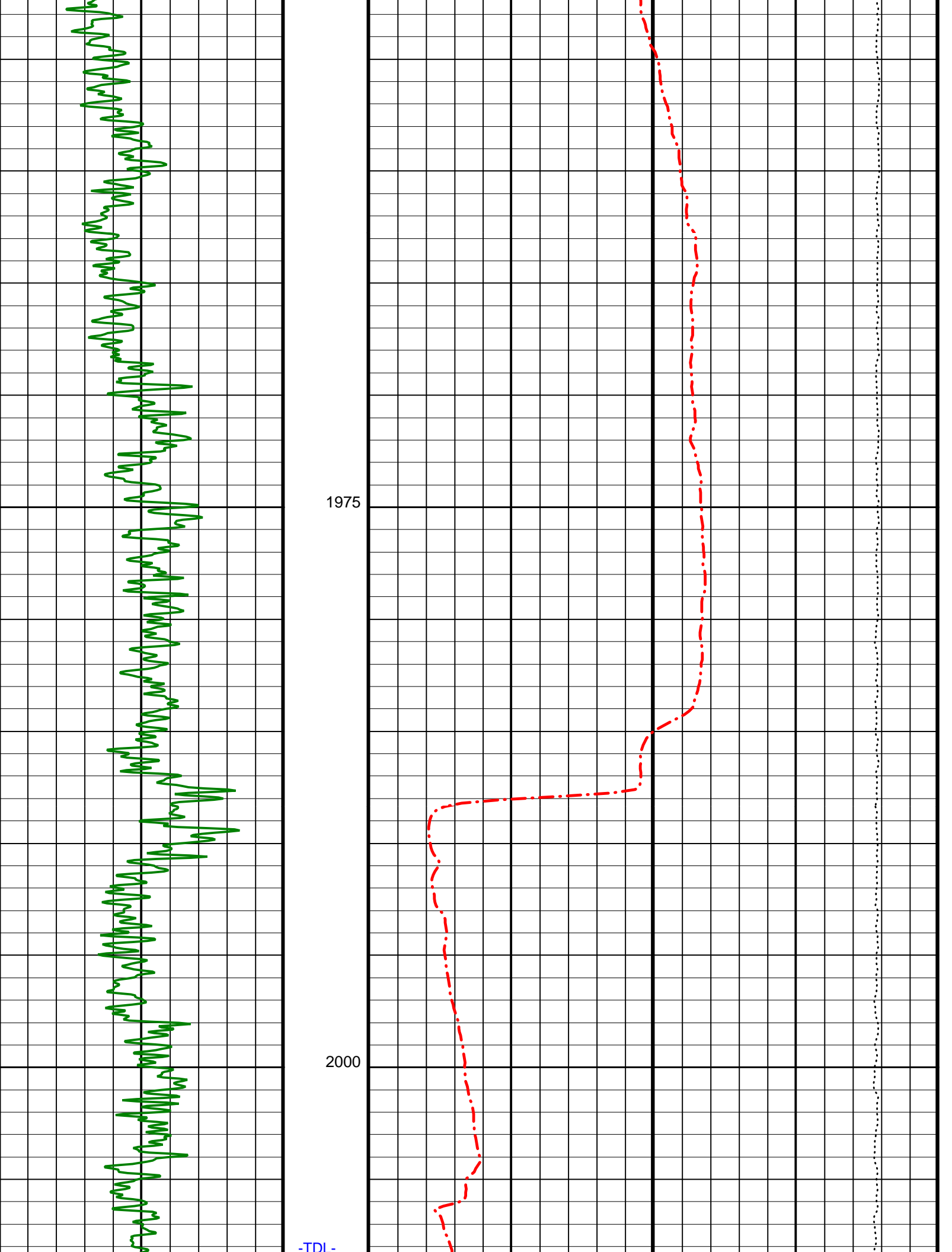
-CSG-

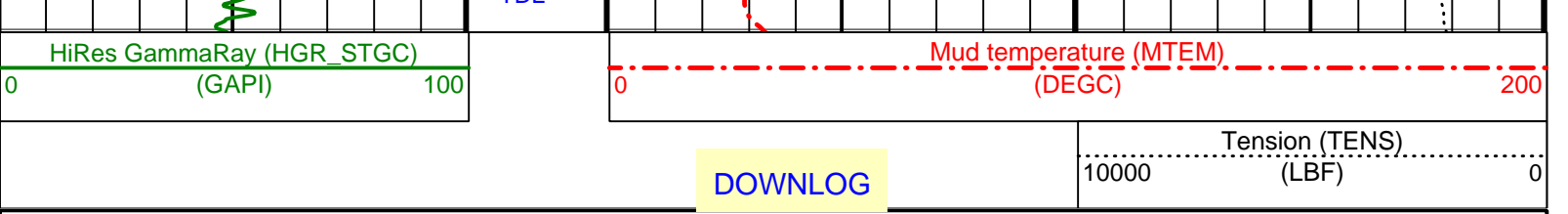
1850

1875









Parameters		
DLIS Name	Description	Value
DO	Depth Offset for Logical Unit 1	0.0 M
PP	Playback Processing	OFF

Format: CORRELATION\_STGC    Vertical Scale: 1:200    Graphics File Created: 02-Jan-2001 16:01

OP System Version: 9C1-303  
MCM

HTGC-B            OP91-kp2

Input DLIS Files					
DEFAULT	HTGC-B.023	PRODUCER	02-Jan-2001 15:57	2009.1 M	1600.0 M
Output DLIS Files					
DEFAULT	HTGC-B.025	FN:22 PRODUCER	02-Jan-2001 16:00		

**COMPANY:** Lamont Doherty

**WELL:** ODP Leg 193, Site 1188F (PCM-2A)

**FIELD:** Manus Basin, Snowcap

**COUNTY:** Offshore

**STATE:** Bismarck Sea

BOTTOM LOG INTERVAL	2008 m
SCHLUMBERGER DEPTH	2008 m
DEPTH DRILLER	2039.7 m
KELLY BUSHING	11.3 m
DRILL FLOOR	11 m
GROUND LEVEL	-1653 m