

Formation MicroScanner

COMPANY: Lamont-Doherty Earth Observatory

WELL: ODP Leg 193, Site 1189C, Roman Ruins

FIELD: Manus Basin

STATE: Offshore

COUNTRY: Bismarck Sea

Date Processed: December 30, 2000 Date Logged: December 29, 2000

Job Number: Processed at:

Well Location:

Latitude: 03° 43.2415' S Longitude: 151° 40.5240' E

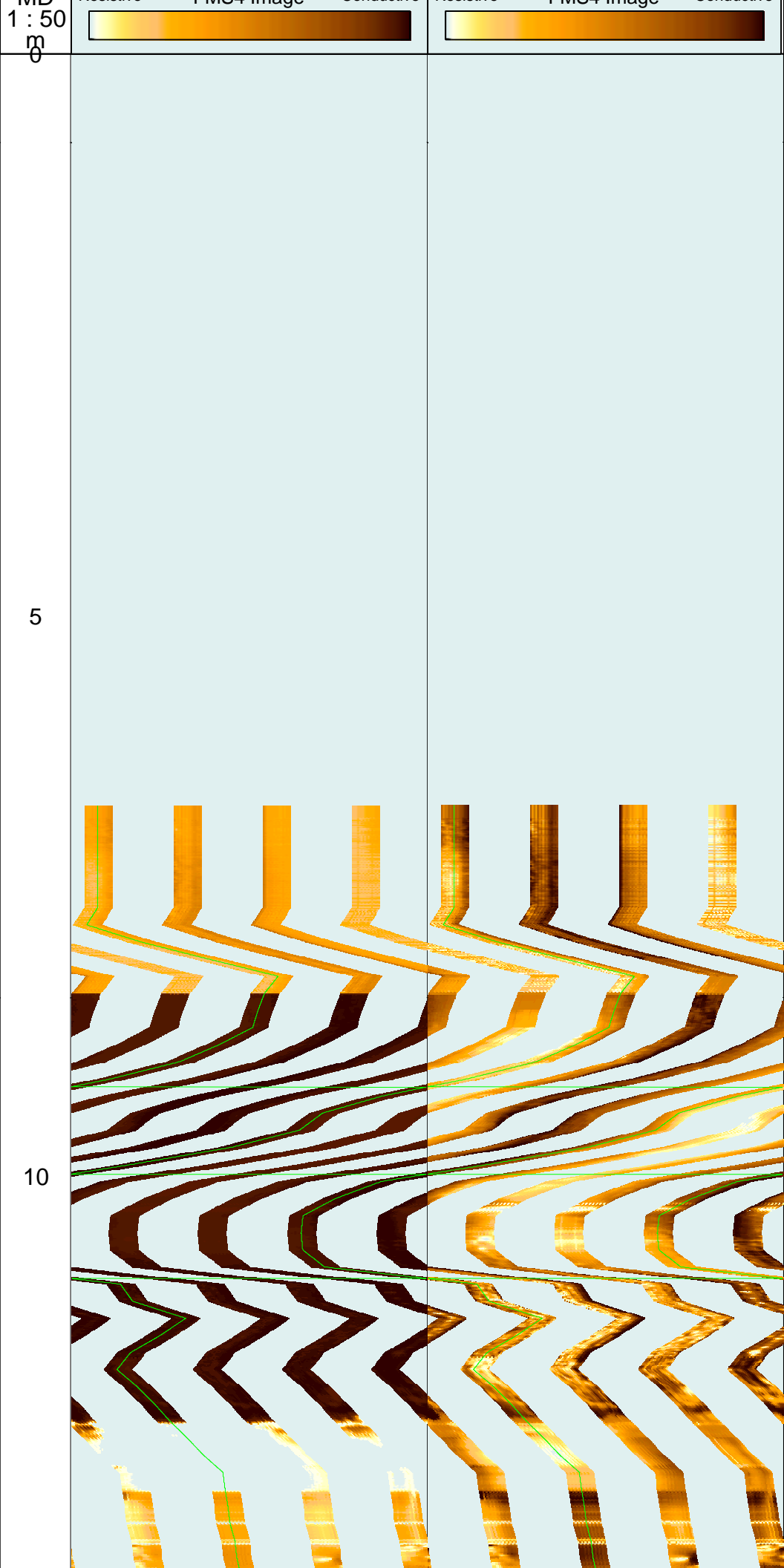
Elevations: KB: 11.2m DF: 10.9m GL: -2463.3m

Static and Dynamic Normalization

FOLD HERE The well name, location and borehole reference data were furnished by the customer.

All interpretations are opinions based on inferences from electrical or other measurements and we cannot, and do not guarantee the accuracy or correctness of any interpretation, and we shall not, except in the case of gross or willful negligence on our part, be liable or responsible for any loss, costs, damages or expenses incurred or sustained by anyone resulting from any interpretations made by any of our officers, agents or employees. These interpretations are also subject to Clause 4 of our General Terms and Conditions as set out in our current Price Schedule.

MESTB .069 FMS4 .STAT [C174003] Horizontal Scale: 1 : 12.409 Orientation North			MESTB .069 FMS4 .DYNA [C173945] Horizontal Scale: 1 : 12.409 Orientation North				
0	120	240	360	0	120	240	360
Resistive	FMS4 Image	Conductive		Resistive	FMS4 Image	Conductive	



15

20

25



35

40



