

**COMPANY: Lamont Doherty**

**WELL: ODP Leg 194, Site 1195B**

**FIELD: Marion Plateau**

**Country: Australia Ocean: Pacific Ocean**

**Schlumberger** HNGS Natural Gamma Ray

Country: Australia  
Field: Marion Plateau  
Location: Rig- Joides Resolution  
Well: ODP Leg 194, Site 1195B  
Company: Lamont Doherty

LOCATION			
Rig- Joides Resolution	Elev.:	K.B.	11.3 m
		G.L.	-430.8 m
		D.F.	11 m
Permanent Datum:	GROUND LEVEL _____ Elev.: _____		
Log Measured From: _____	DES _____ above Perm. Datum		
Drilling Measured From: _____	DES _____		
API Serial No. _____	SECTION	TOWNSHIP	RANGE

Logging Date	Run 1	Run 2	Run
Run Number			
Depth Driller			
Schlumberger Depth			
Bottom Log Interval			
Top Log Interval			
Casing Driller Size @ Depth			
Casing Schlumberger			
Bit Size			
Type Fluid In Hole			
Density			
Fluid Loss			
Fluid Loss			
PH			
Source Of Sample			
RM @ Measured Temperature			
RMF @ Measured Temperature			
RMC @ Measured Temperature			
Source RMF			
RM @ MRT			
RMF @ MRT			
Maximum Recorded Temperatures			
Circulation Stopped			
Time			
Logger On Bottom			
Time			
Unit Number			
Location			
Recorded By			
Witnessed By			

Logging Date	1/29/01		
Run Number	1		
Depth Driller	951.24 m		
Schlumberger Depth	949.5 m		
Bottom Log Interval	947.5 m		
Top Log Interval	418.5 m		
Casing Driller Size @ Depth	0.000 in @ 513.57 m		
Casing Schlumberger	509 m @		
Bit Size	9.875 in		
Type Fluid In Hole			
Density	1.1 g/cm3		
Fluid Loss			
Fluid Loss			
PH			
Source Of Sample			
RM @ Measured Temperature	@		
RMF @ Measured Temperature	@		
RMC @ Measured Temperature	@		
Source RMF			
RM @ MRT	@		
RMF @ MRT	@		
Maximum Recorded Temperatures			
Circulation Stopped	1/29/01		
Time	0030		
Logger On Bottom			
Time	See Log		
Unit Number	99		
Location	Houston		
Recorded By	Steve Kittredge		
Witnessed By	Heike Dalius, Gregor Eberli		

Logging Date	Run 1	Run 2	Run
Run Number			
Depth Driller			
Schlumberger Depth			
Bottom Log Interval			
Top Log Interval			
Casing Driller Size @ Depth			
Casing Schlumberger			
Bit Size			
Type Fluid In Hole			
Density			
Fluid Loss			
Fluid Loss			
PH			
Source Of Sample			
RM @ Measured Temperature			
RMF @ Measured Temperature			
RMC @ Measured Temperature			
Source RMF			
RM @ MRT			
RMF @ MRT			
Maximum Recorded Temperatures			
Circulation Stopped			
Time			
Logger On Bottom			
Time			
Unit Number			
Location			
Recorded By			
Witnessed By			

Logging Date			
Run Number			
Depth Driller			
Schlumberger Depth			
Bottom Log Interval			
Top Log Interval			
Casing Driller Size @ Depth			
Casing Schlumberger			
Bit Size			
Type Fluid In Hole			
Density			
Fluid Loss			
Fluid Loss			
PH			
Source Of Sample			
RM @ Measured Temperature	@		
RMF @ Measured Temperature	@		
RMC @ Measured Temperature	@		
Source RMF			
RM @ MRT	@		
RMF @ MRT	@		
Maximum Recorded Temperatures			
Circulation Stopped			
Time			
Logger On Bottom			
Time			
Unit Number			
Location			
Recorded By			
Witnessed By			

**DISCLAIMER**  
 THE USE OF AND RELIANCE UPON THIS RECORDED-DATA BY THE HEREIN NAMED COMPANY (AND ANY OF ITS AFFILIATES, PARTNERS, REPRESENTATIVES, AGENTS, CONSULTANTS AND EMPLOYEES) IS SUBJECT TO THE TERMS AND CONDITIONS AGREED UPON BETWEEN SCHLUMBERGER AND THE COMPANY, INCLUDING: (a) RESTRICTIONS ON USE OF THE RECORDED-DATA; (b) DISCLAIMERS AND WAIVERS OF WARRANTIES AND REPRESENTATIONS REGARDING COMPANY'S USE OF AND RELIANCE UPON THE RECORDED-DATA; AND (c) CUSTOMER'S FULL AND SOLE RESPONSIBILITY FOR ANY INFERENCE DRAWN OR DECISION MADE IN CONNECTION WITH THE USE OF THIS RECORDED-DATA.

**OTHER SERVICES1**  
 OS1:  
 OS2: WSTA  
 OS3:  
 OS4:  
 OS5:

**OTHER SERVICES2**  
 OS1:  
 OS2:  
 OS3:  
 OS4:  
 OS5:

**REMARKS: RUN NUMBER 1**  
 Hole Cored With RCB.  
 WHC used on all runs.  
 Seas calm.  
 Log Measured in Meters Below Rig Floor (MBRF).  
 Sea Floor Driller- 430.8 MBRF.  
 Sea Floor Logger- 429 MBRF.  
 Drill Pipe Driller- 513 MBRF.  
 Drill Pipe Logger- 509 MBRF.  
 TD Driller- 951.24 MBRF.  
 TD Logger- 949.5 MBRF.  
 Did not run Lamont GR due to hole conditions.  
 Lamont Temp tool was run.

**REMARKS: RUN NUMBER 2**

**RUN 1**  
 SERVICE ORDER #:  
 PROGRAM VERSION: 9C1-303  
 FLUID LEVEL:

**RUN 2**  
 SERVICE ORDER #:  
 PROGRAM VERSION:  
 FLUID LEVEL:

LOGGED INTERVAL	START	STOP



LOGGED INTERVAL	START	STOP

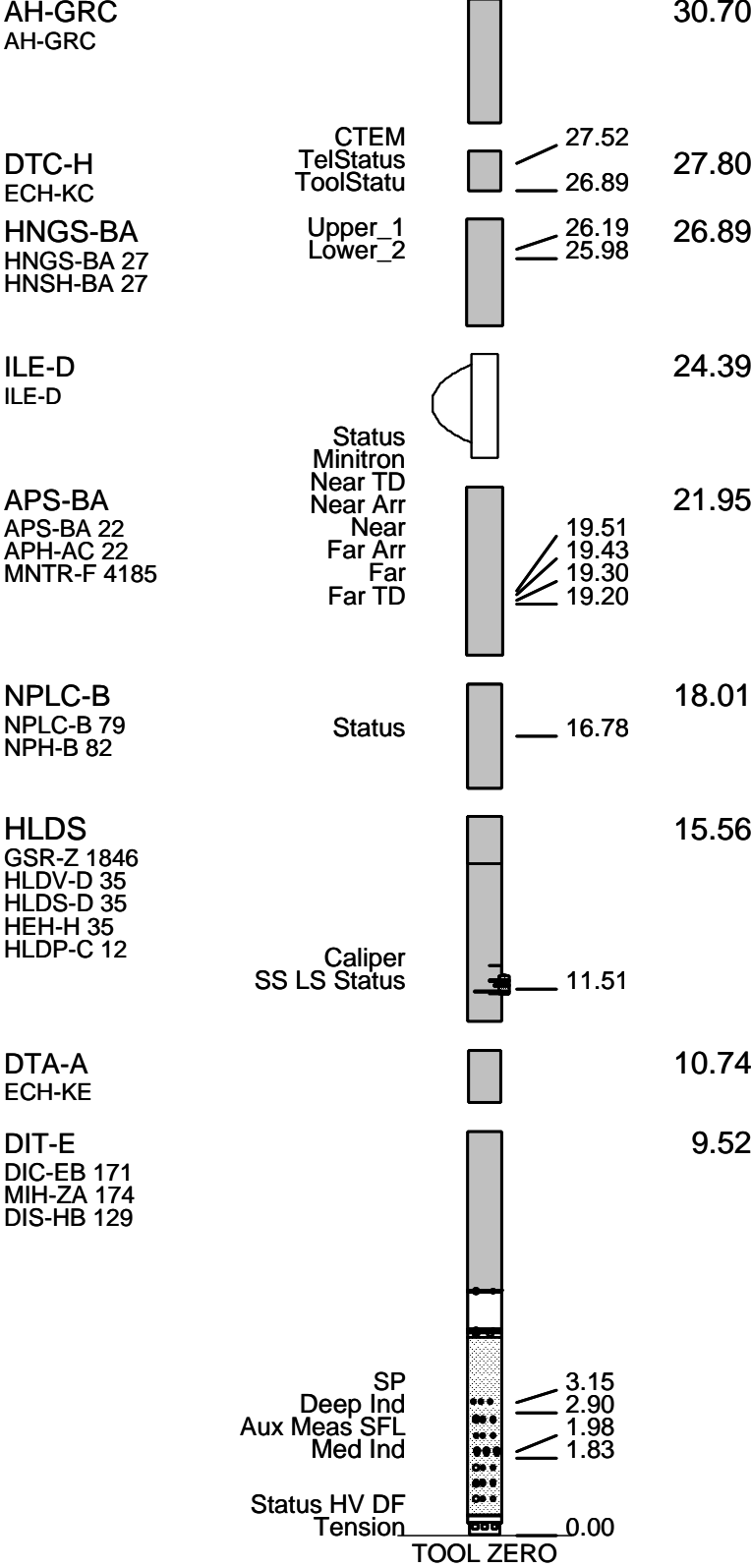
**EQUIPMENT DESCRIPTION**

**RUN 1**  
**SURFACE EQUIPMENT**  
 SFT-281 24  
 SFT-178 4722  
 GSR-U 135  
 WITM (DTS)-A

**RUN 2**

**DOWNHOLE EQUIPMENT**

LEH-QT		34.33
LEH-QT		
AH-GRS		33.44
AH-GRS		



MAXIMUM STRING DIAMETER 3.88 IN  
 MEASUREMENTS RELATIVE TO TOOL ZERO  
 ALL LENGTHS IN METERS

### Output DLIS Files

DEFAULT	DITE .028	FN:15 PRODUCER	29-Jan-2001 06:35	948.7 M	418.5 M
TCOMBO_CUST	DITE .028	FN:16 PRODUCER	29-Jan-2001 06:35	948.7 M	418.5 M

OP System Version: 9C1-303  
MCM

MAIN UP LOG

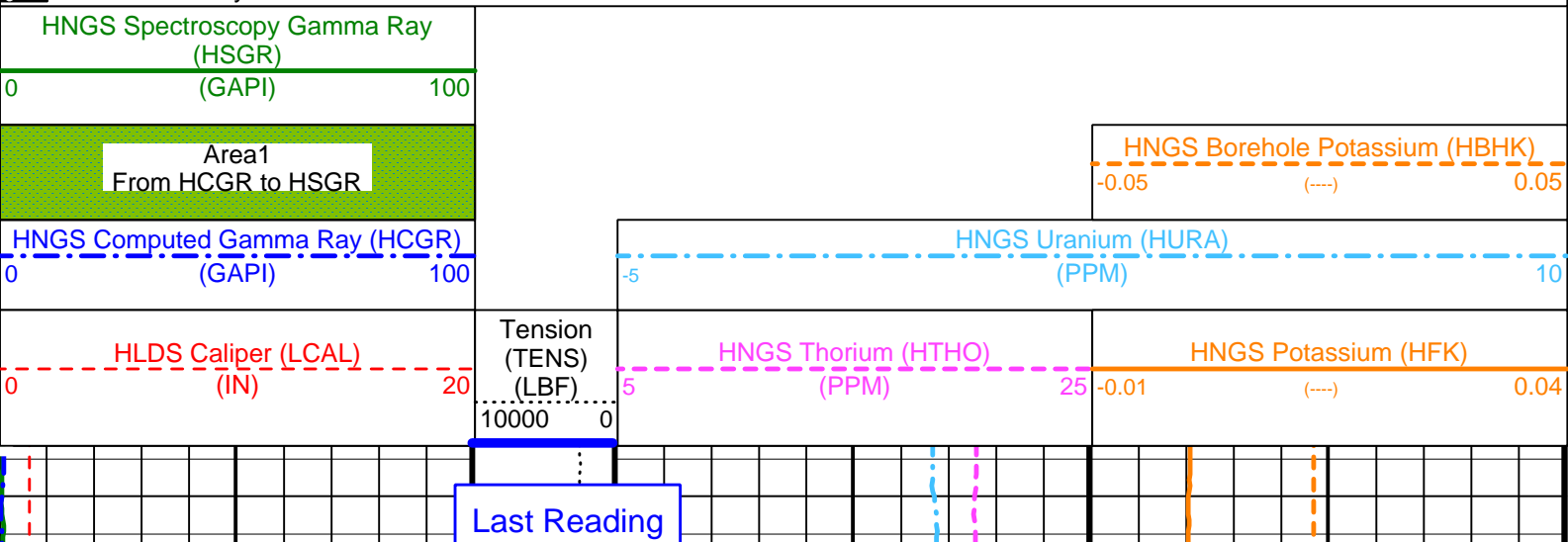
DIT-E	OP91-kp2	DTA-A	OP91-kp2
HLDS	OP91-kp2	NPLC-B	OP91-kp2
APS-BA	OP91-kp2	HNGS-BA	OP91-kp2
DTC-H	OP91-kp2		

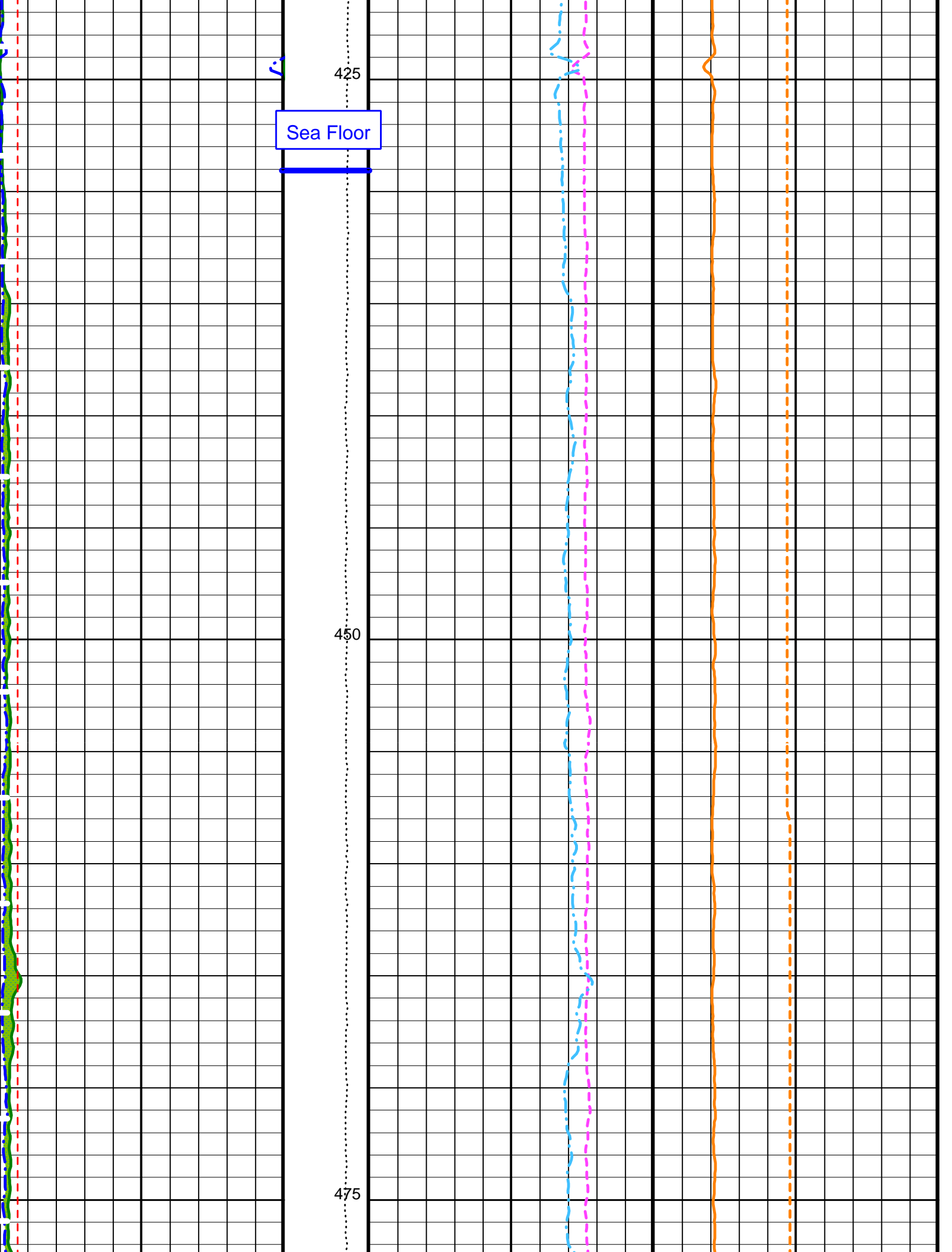
### Changed Parameter Summary

DLIS Name	New Value	Previous Value	Depth & Time
BS	10.250 IN	9.875 IN	686.4 07:35:16
GCSE	BS	LCAL	548.0 08:05:49

### PIP SUMMARY

Time Mark Every 60 S



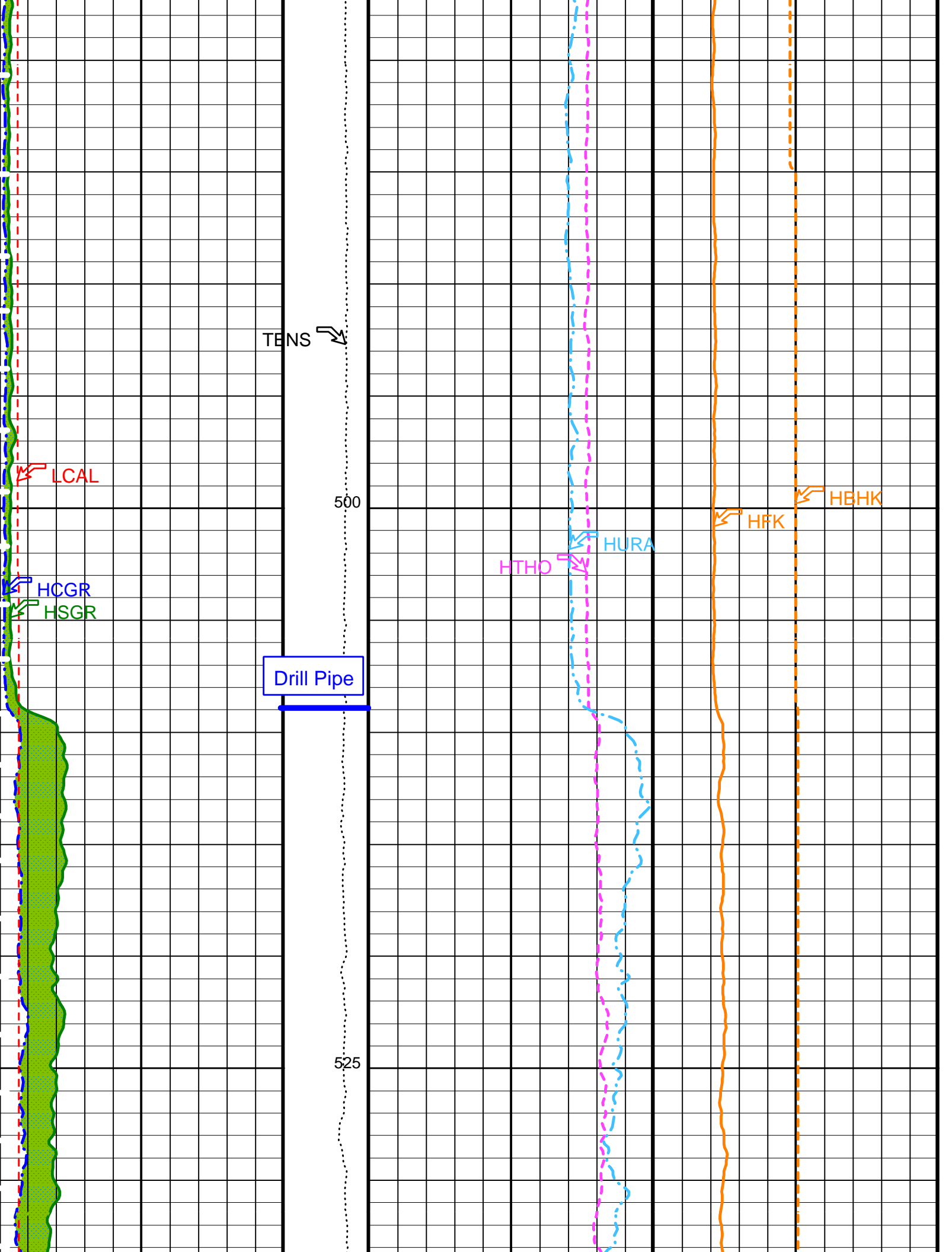


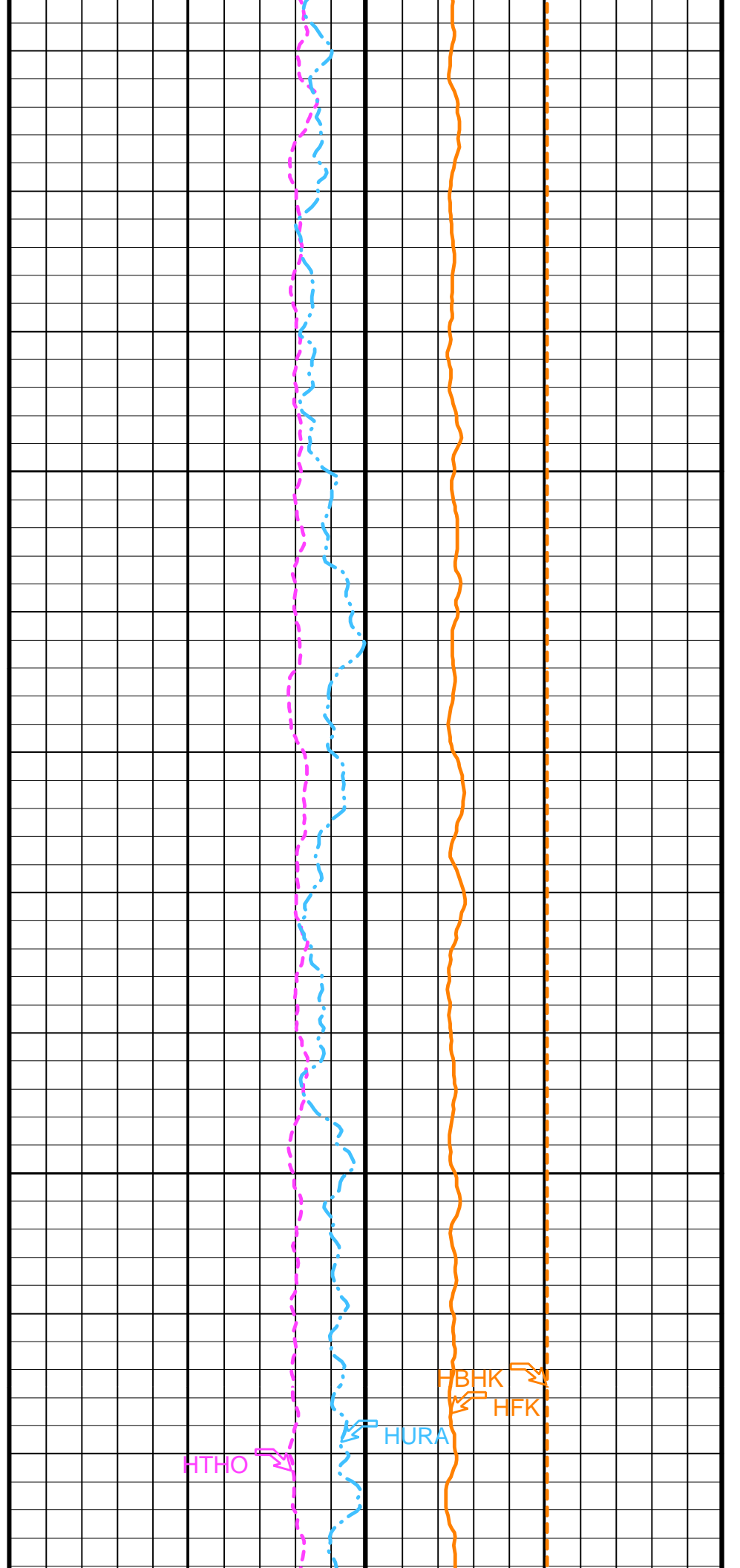
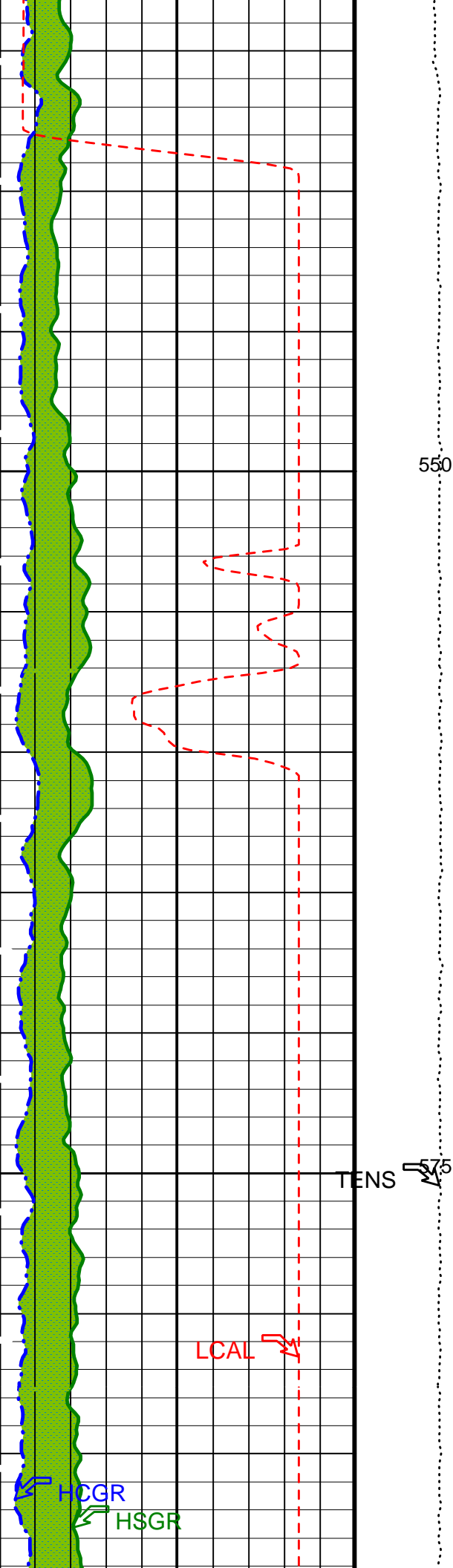
425

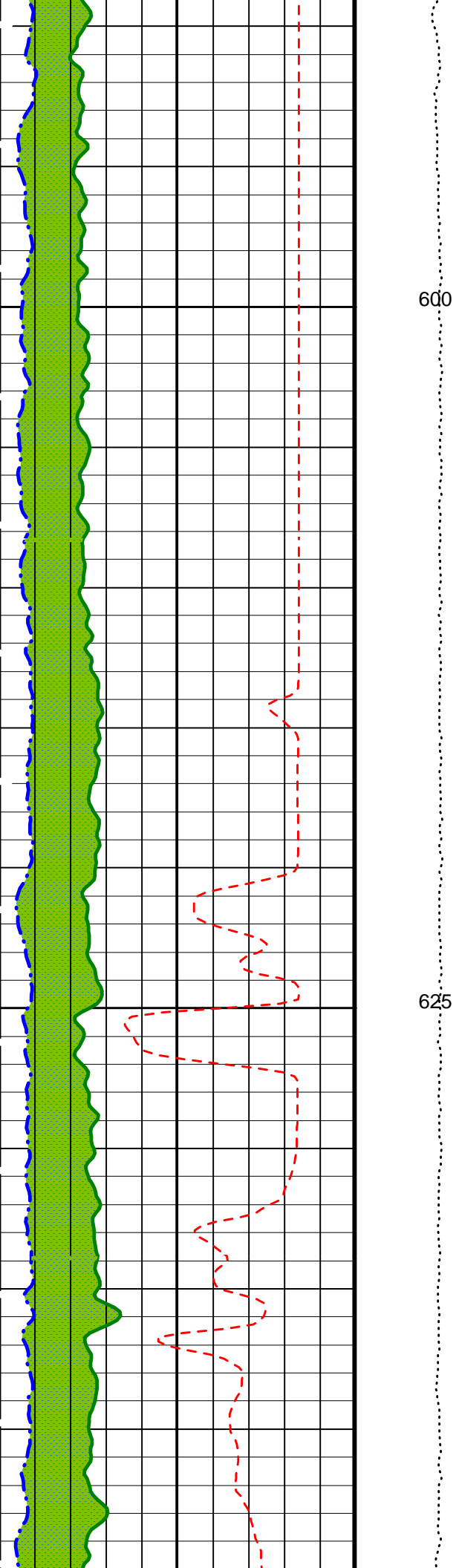
Sea Floor

450

475

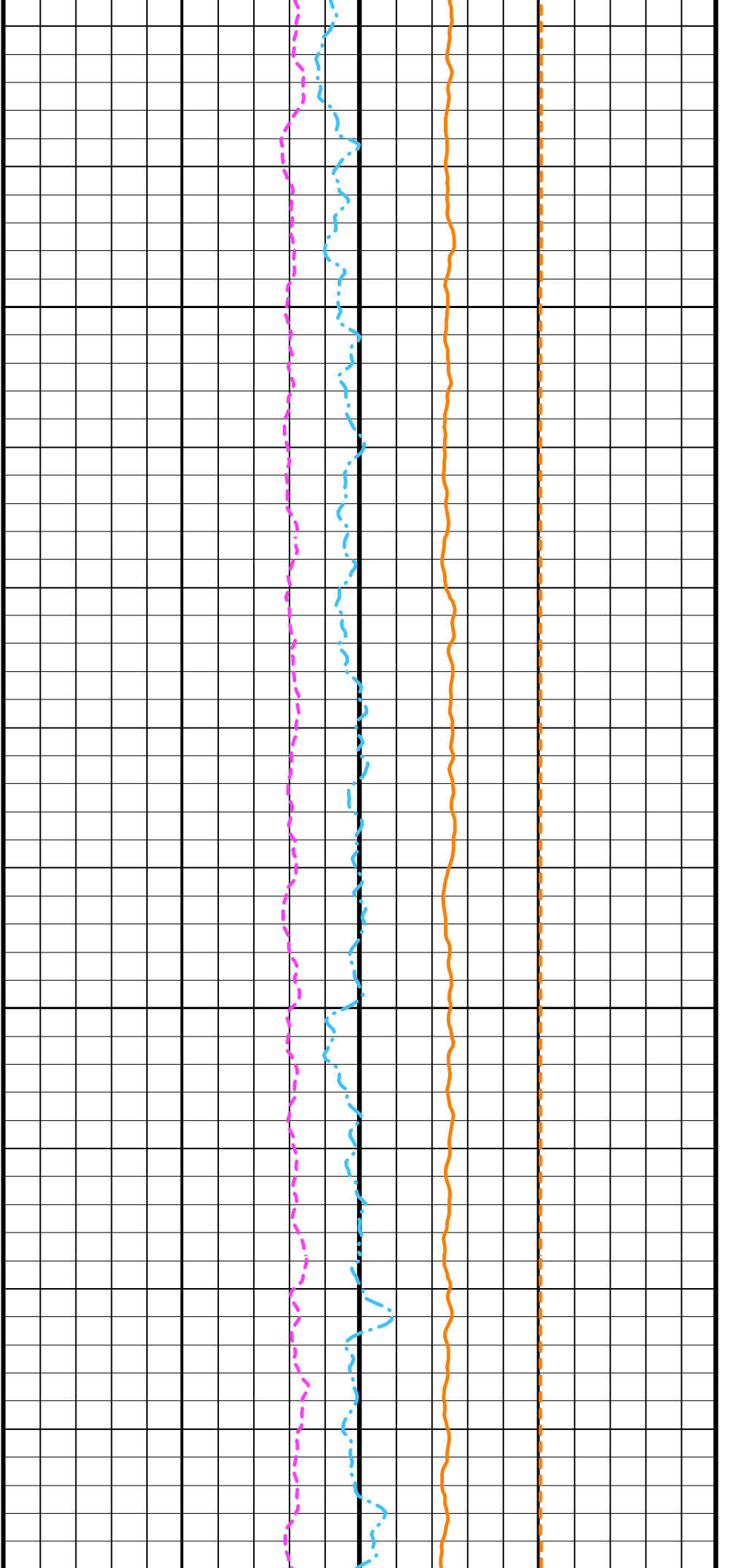




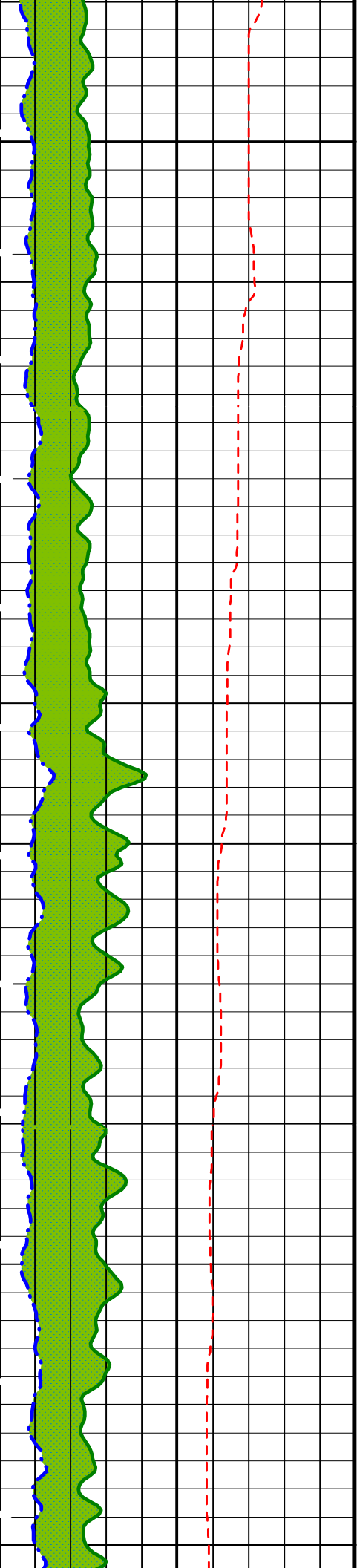


600

625



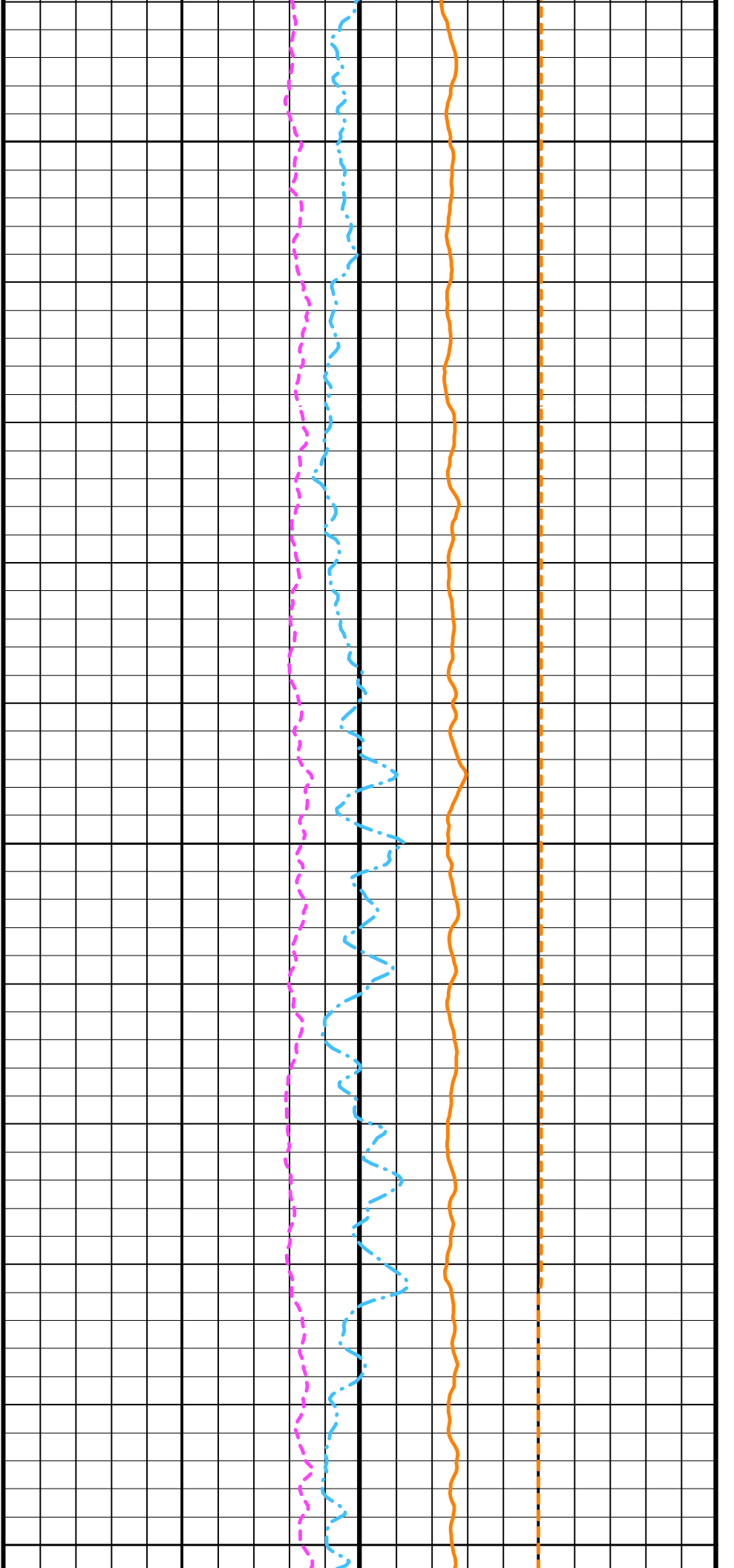


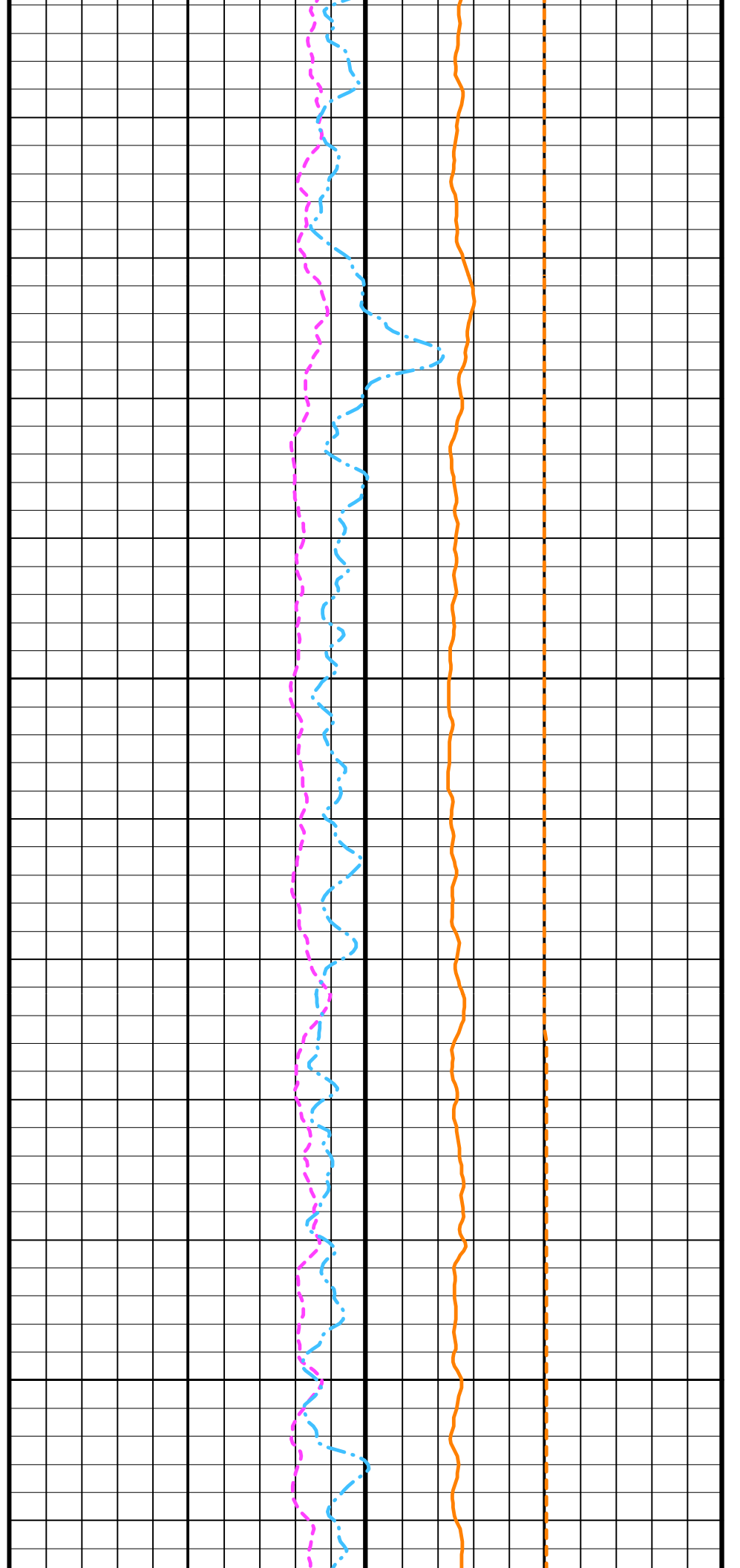
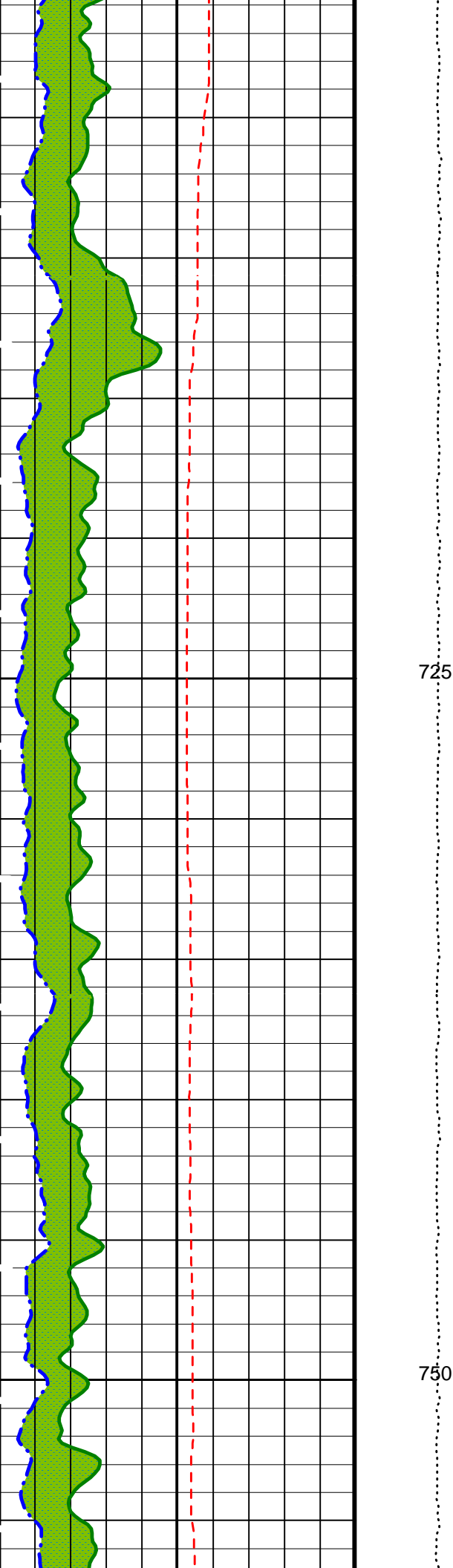


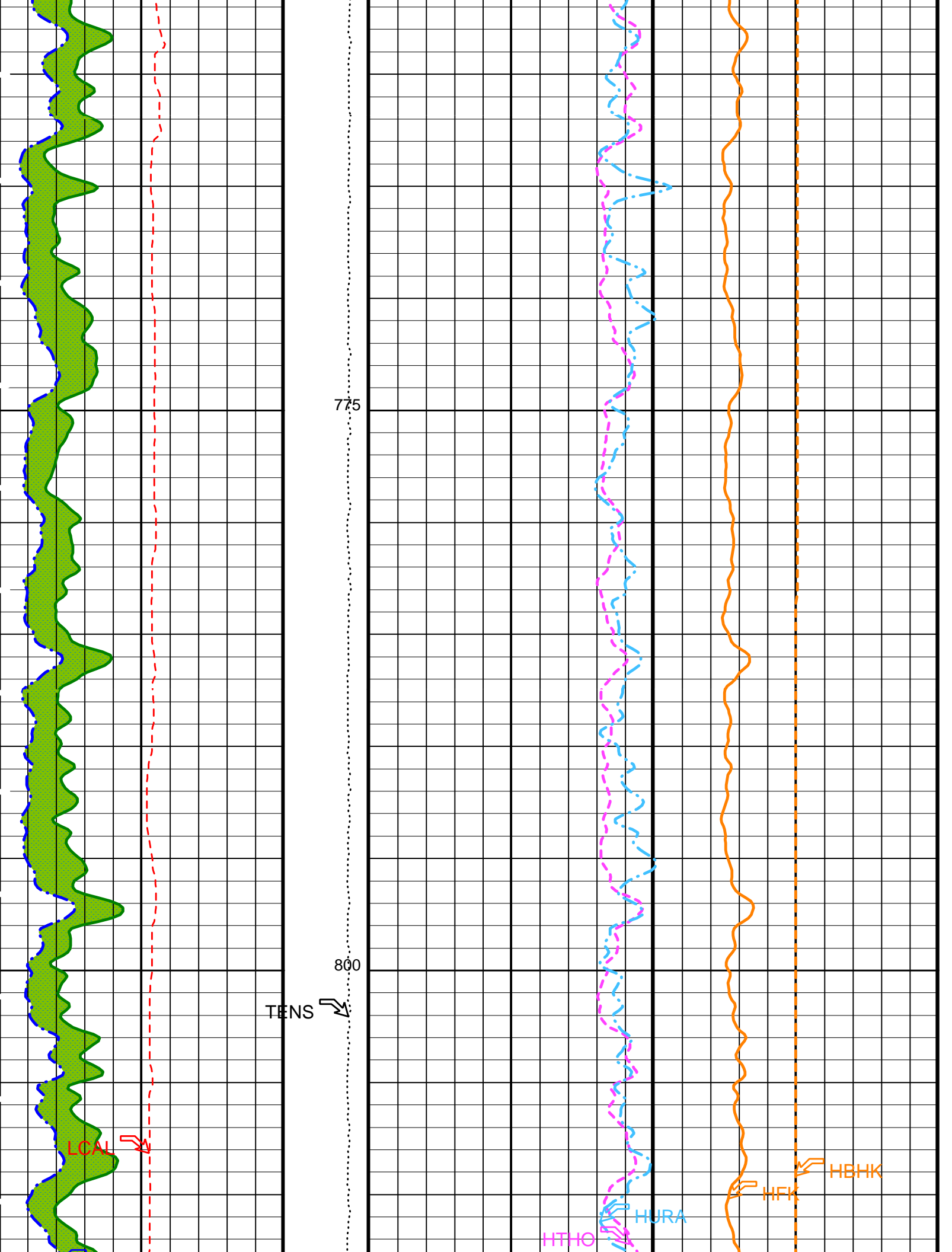
650

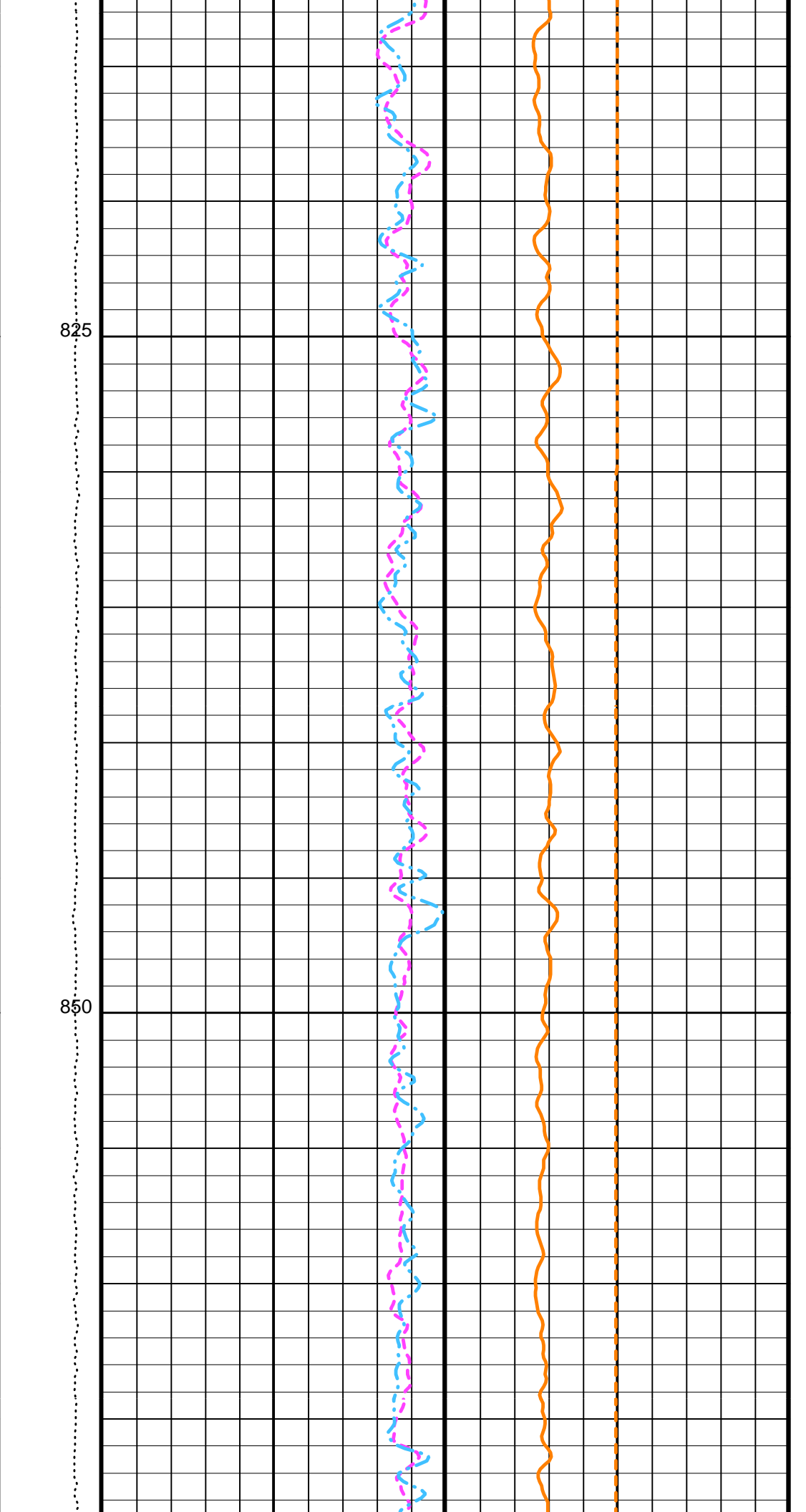
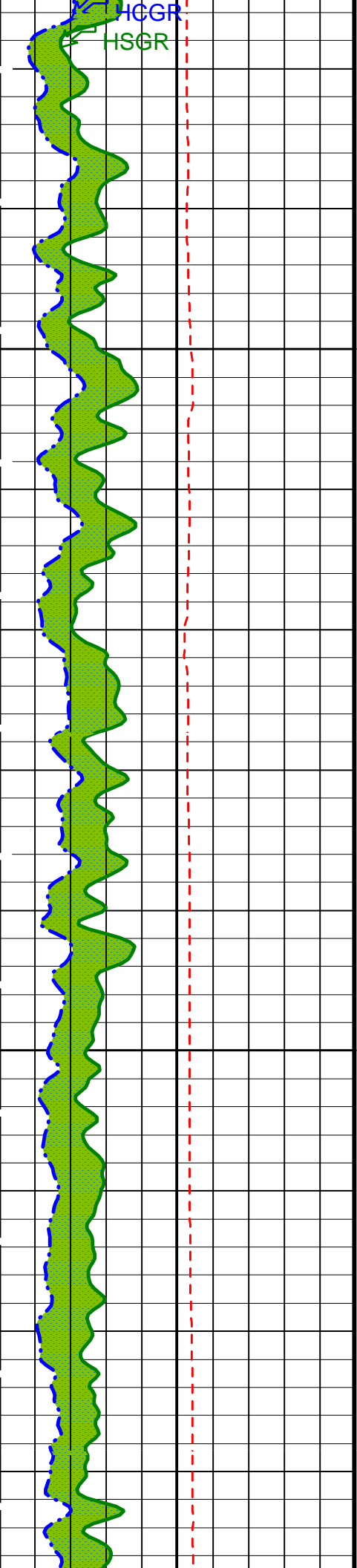
675

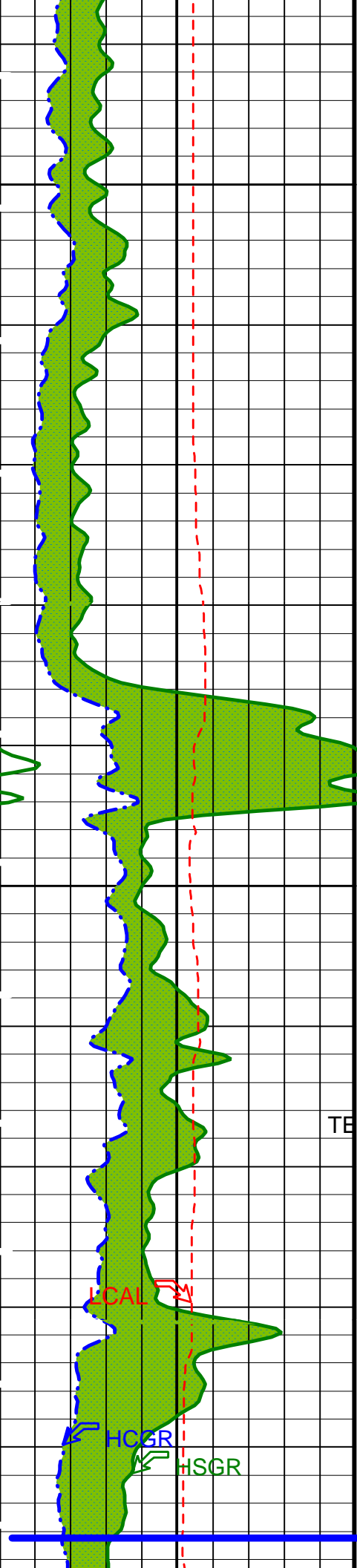
700





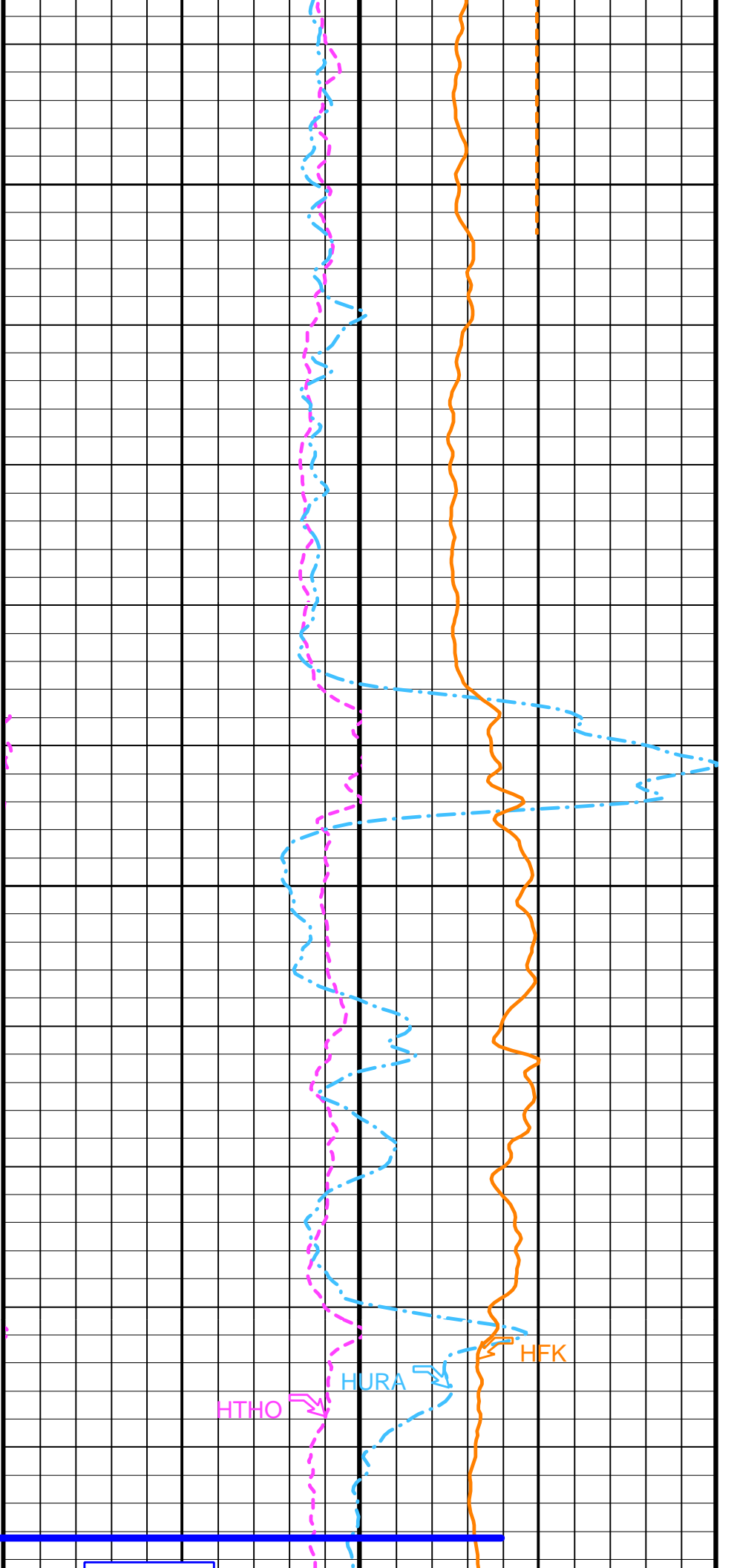


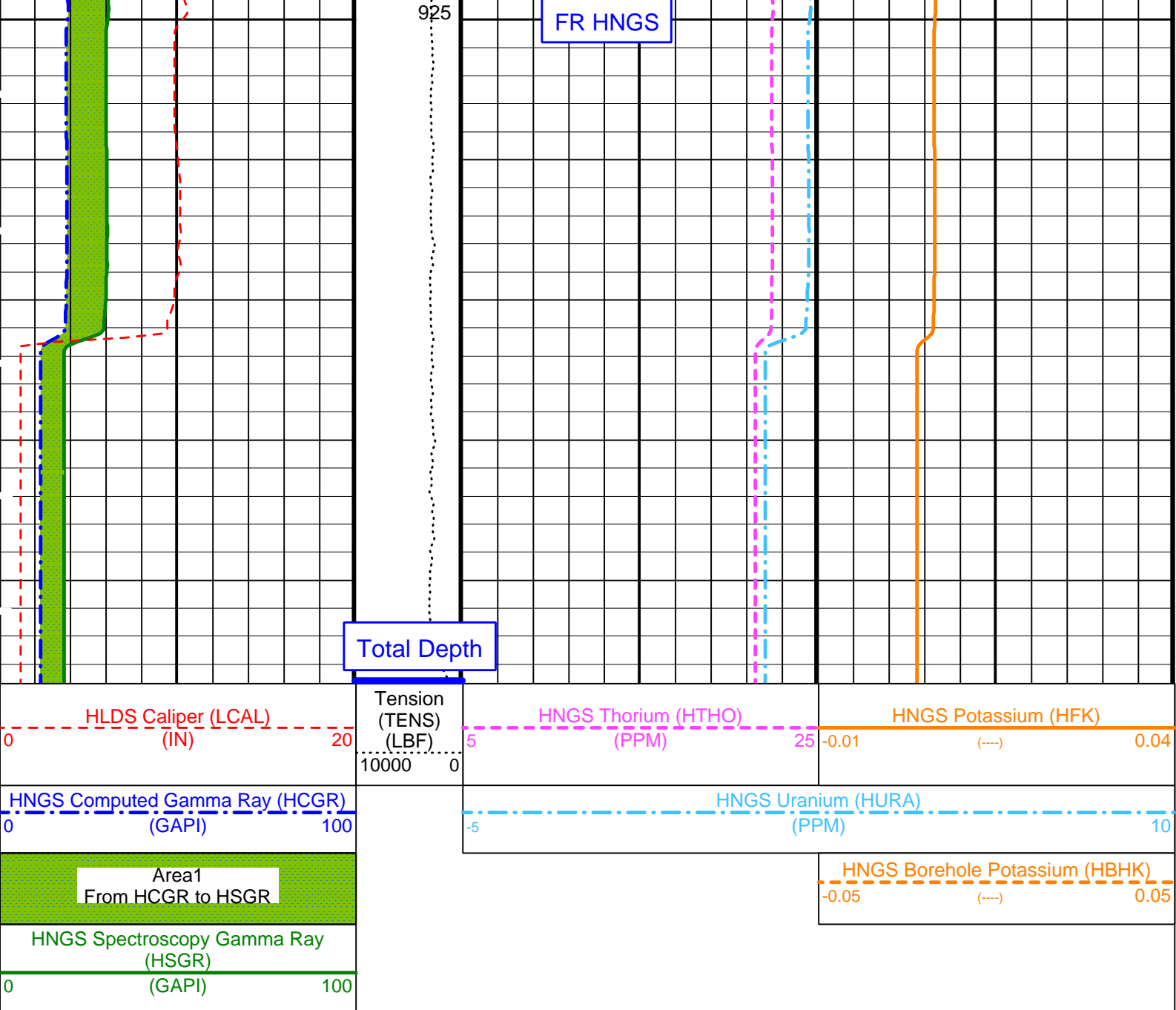




875

900





PIP SUMMARY  
 Time Mark Every 60 S

### Parameters

DLIS Name	Description	Value	
BAR1	HNGS Detector 1 Barite Constant	1	
BAR2	HNGS Detector 2 Barite Constant	1	
BHK	HNGS Borehole Potassium Correction Concentration	0	
BHS	Borehole Status	OPEN	
BKSF	HNGS Borehole Fluid Excluder Sleeve Algorithm Factor	1	
BKSH	HNGS Borehole Fluid Excluder Sleeve Algorithm High Channel	245	
BKSL	HNGS Borehole Fluid Excluder Sleeve Algorithm Low Channel	17	
BS	Bit Size	9.875	IN
CSD1	Inner Casing Outer Diameter	0	IN
CSD2	Outer Casing Outer Diameter	0	IN
CSW1	Inner Casing Weight	0	LB/F
CSW2	Outer Casing Weight	0	LB/F
D1PR	HNGS Detector 1 Calibration Thorium Peak Resolution	7.79616	%
D1TC	HNGS Detector 1 Calibration Temperature	30.594	DEGC
D1TL	HNGS Detector 1 Calibration Thorium Peak Location	211.429	
D2PR	HNGS Detector 2 Calibration Thorium Peak Resolution	6.70686	%
D2TC	HNGS Detector 2 Calibration Temperature	29.6607	DEGC
D2TL	HNGS Detector 2 Calibration Thorium Peak Location	210.041	
DBCC	HNGS Barite Constant Correction Flag	NONE	
DFD	Drilling Fluid Density	1.10	G/C3
GCF1_START	HNGS Detector 1 GCF Constant	1	

GCF2_START	HNGS Detector 2 GCF Constant	1	
GCSE	Generalized Caliper Selection	LCAL	
H1P	HNGS Detector 1 Allow/Disallow In Processing	ALLOW	
H2P	HNGS Detector 2 Allow/Disallow In Processing	ALLOW	
HABK	HNGS Borehole Potassium Running Average	-0.0008613	
HALF	HNGS Alpha Filter Length	60	IN
HATIM	HNGS Marquardt Accumulation Time	600	S
HCRB	HNGS Apply Borehole Potassium Correction	NONE	
HMWM	Mud Weighting Material	NATU	
HNPE	HNGS Processing Enable	YES	
HSLV	HNGS Borehole Fluid Excluder Sleeve Status	NO	
HSVN	HNGS Spectral Standards Version Number	3.51694e-035	
MARQ_START	HNGS Marquardt Start-up Mode	INTERNAL	
RDF1_START	HNGS Detector 1 RDF Constant	0	
RDF2_START	HNGS Detector 2 RDF Constant	0	
S1BI	HNGS Detector 1 Calibration Bismuth Count Rate	1.3	CPS
S1NA	HNGS Detector 1 Calibration Sodium Count Rate	22.4203	CPS
S1NG	HNGS Detector 1 Calibration End-On / Side-On Gain Ratio	0.992953	
S2BI	HNGS Detector 2 Calibration Bismuth Count Rate	1.3	CPS
S2NA	HNGS Detector 2 Calibration Sodium Count Rate	22.621	CPS
S2NG	HNGS Detector 2 Calibration End-On / Side-On Gain Ratio	0.985234	
SABK	HNGS Statistical Uncertainty in Borehole Potassium Running Average	0.000143516	
SGRC	HNGS Standard Gamma-Ray Correction Flag	YES	
TPOS	Tool Position	ECCE	
VBA1	HNGS Detector 1 Variable Barite Factor Running Average	1.00429	
VBA2	HNGS Detector 2 Variable Barite Factor Running Average	0.957499	

Format: HNGSYields      Vertical Scale: 1:200      Graphics File Created: 29-Jan-2001 06:35

**OP System Version: 9C1-303**  
MCM

DIT-E	OP91-kp2	DTA-A	OP91-kp2
HLDS	OP91-kp2	NPLC-B	OP91-kp2
APS-BA	OP91-kp2	HNGS-BA	OP91-kp2
DTC-H	OP91-kp2		

**Output DLIS Files**

DEFAULT	DITE .028	FN:15 PRODUCER	29-Jan-2001 06:35
TCOMBO_CUST	DITE .028	FN:16 PRODUCER	29-Jan-2001 06:35

**COMPANY: Lamont Doherty**

**WELL: ODP Leg 194, Site 1195B**

**FIELD: Marion Plateau**

**Country: Australia**

**Ocean: Pacific Ocean**

BOTTOM LOG INTERVAL	947.5 m
SCHLUMBERGER DEPTH	949.5 m
DEPTH DRILLER	951.24 m
KELLY BUSHING	11.3 m
DRILL FLOOR	11 m
GROUND LEVEL	-430.8 m

**Schlumberger**

**HNGS Natural Gamma Ray**