

COMPANY: Lamont Doherty

WELL: ODP Leg 194, Site 1196A

FIELD: Marion Plateau

Country: Australia Ocean: Pacific Ocean

Schlumberger Long Spacing Sonic Log

Country: Australia
Field: Marion Plateau
Location: Rig- Joides Resolution
Well: ODP Leg 194, Site 1196A
Company: Lamont Doherty

LOCATION		Elev.:	K.B.	11.3 m
Rig- Joides Resolution			G.L.	-315.2 m
			D.F.	11 m
Permanent Datum:	GROUND LEVEL		Elev.:	
Log Measured From:	DES	above Perm. Datum		
Drilling Measured From:	DES			
API Serial No.	SECTION	TOWNSHIP	RANGE	

Logging Date	Run 1	Run 2	Run
2/3/01			
1			
987.4 m			
838 m			
836 m			
378.5 m			
0.000 in			
386 m			
9.875 in			
Sepiolite			
1.1 g/cm3			
PH			
RM @ Measured Temperature			
RMF @ Measured Temperature			
RMC @ Measured Temperature			
Source RMF			
RM @ MRT			
Maximum Recorded Temperatures			
Circulation Stopped			
Logger On Bottom			
Unit Number			
Recorded By			
Witnessed By			

Logging Date	2/3/01			
Run Number	1			
Depth Driller	987.4 m			
Schlumberger Depth	838 m			
Bottom Log Interval	836 m			
Top Log Interval	378.5 m			
Casing Driller Size @ Depth	0.000 in	@	387 m	@
Casing Schlumberger	386 m			
Bit Size	9.875 in			
Type Fluid In Hole	Sepiolite			
Density	1.1 g/cm3			
Fluid Loss	PH			
Source Of Sample				
RM @ Measured Temperature		@		@
RMF @ Measured Temperature		@		@
RMC @ Measured Temperature		@		@
Source RMF	RMC			
RM @ MRT	RMF @ MRT	@	@	@
Maximum Recorded Temperatures				
Circulation Stopped	Time	2/3/01	0700	
Logger On Bottom	Time	2/4/01	See Log	
Unit Number	Location	99	Houston	
Recorded By		Steve Kittredge		
Witnessed By		Heike Delius, Gregor Eberli		

Logging Date	Run 1	Run 2	Run
2/3/01			
1			
987.4 m			
838 m			
836 m			
378.5 m			
0.000 in			
386 m			
9.875 in			
Sepiolite			
1.1 g/cm3			
PH			
RM @ Measured Temperature			
RMF @ Measured Temperature			
RMC @ Measured Temperature			
Source RMF			
RM @ MRT			
Maximum Recorded Temperatures			
Circulation Stopped			
Logger On Bottom			
Unit Number			
Recorded By			
Witnessed By			

DISCLAIMER





THE USE OF AND RELIANCE UPON THIS RECORDED-DATA BY THE HEREIN NAMED COMPANY (AND ANY OF ITS AFFILIATES, PARTNERS, REPRESENTATIVES, AGENTS, CONSULTANTS AND EMPLOYEES) IS SUBJECT TO THE TERMS AND CONDITIONS AGREED UPON BETWEEN SCHLUMBERGER AND THE COMPANY, INCLUDING: (a) RESTRICTIONS ON USE OF THE RECORDED-DATA; (b) DISCLAIMERS AND WAIVERS OF WARRANTIES AND REPRESENTATIONS REGARDING COMPANY'S USE OF AND RELIANCE UPON THE RECORDED-DATA; AND (c) CUSTOMER'S FULL AND SOLE RESPONSIBILITY FOR ANY INFERENCE DRAWN OR DECISION MADE IN CONNECTION WITH THE USE OF THIS RECORDED-DATA.

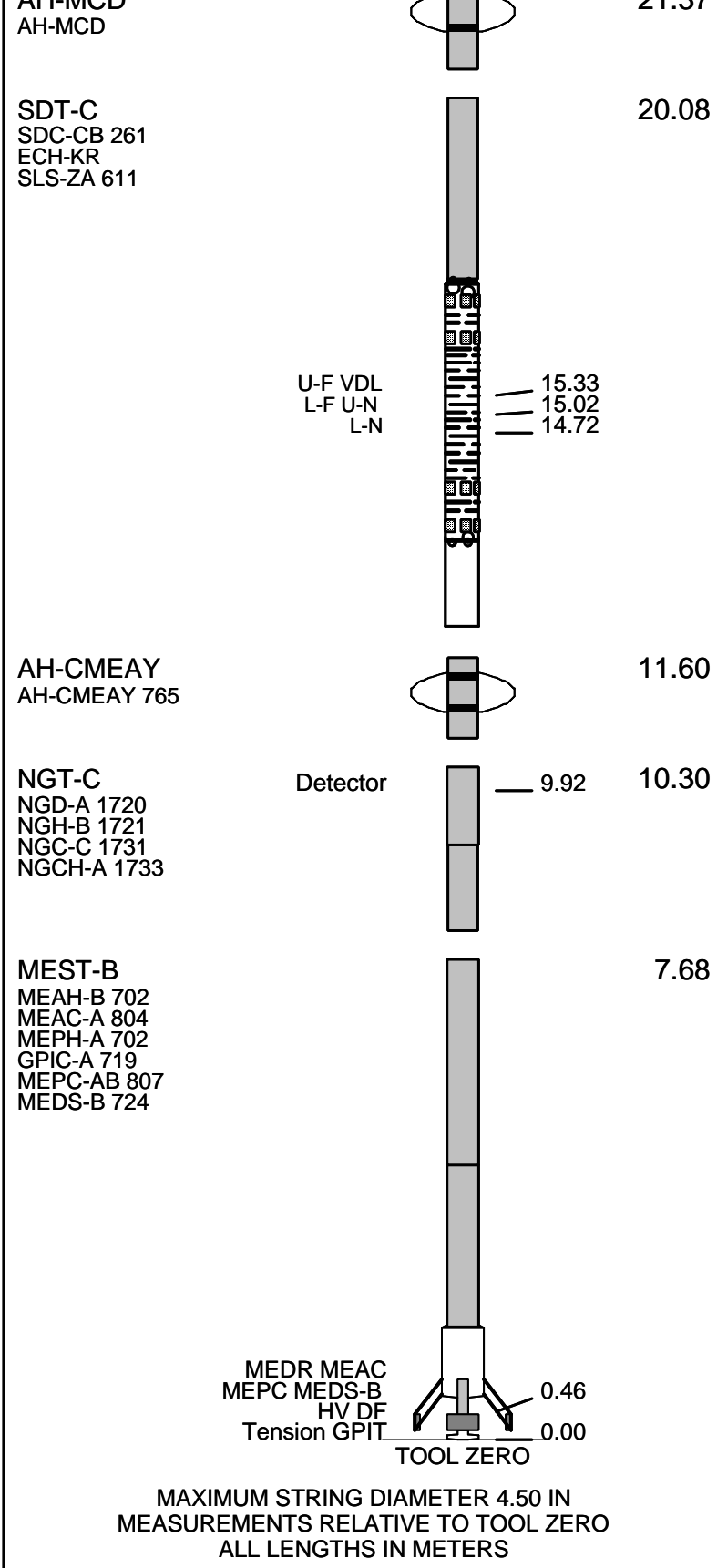
OTHER SERVICES1 OS1: DITE/HLDS/APS/HNGS OS2: WSTA OS3: OS4: OS5:	OTHER SERVICES2 OS1: OS2: OS3: OS4: OS5:
---	---

REMARKS: RUN NUMBER 1	REMARKS: RUN NUMBER 2
Hole Cored With RCB.	
WHC used on all runs.	
SEPIOLITE MUD USED.	
Log Measured in Meters Below Rig Floor (MBRF).	
Sea Floor Driller- 315.2 MBRF.	
Sea Floor Logger- 314 MBRF.	
Total Depth Driller- 987.4 MBRF.	
Total Depth Logger- 838 MBRF.	
High vibrations, due to current were present during logging.	
Drill Pipe Driller- 387 MBRF.	
Drill Pipe Logger- 386 MBRF.	
Bottom nose from Lamont temperature tool vibrated loose.	
The bottom nose wedged in the drill pipe.	
A core barrel was used to clear the blockage.	

RUN 1			RUN 2		
SERVICE ORDER #:			SERVICE ORDER #:		
PROGRAM VERSION:	9C1-303		PROGRAM VERSION:		
FLUID LEVEL:			FLUID LEVEL:		
LOGGED INTERVAL	START	STOP	LOGGED INTERVAL	START	STOP

EQUIPMENT DESCRIPTION

RUN 1		RUN 2	
SURFACE EQUIPMENT			
GSR-U STM-C WITM (CTS)-A			
DOWNHOLE EQUIPMENT			
LEH-QT LEH-QT		23.18	
TCC-BF ECH-KC TCC-BF		22.29	
	TelStatus 	21.37	
AH-MCD		21.37	



Output DLIS Files

DEFAULT	MESTB .009	FN:16 PRODUCER	04-Feb-2001 00:12	818.2 M	378.7 M
FMS_CUST	MESTB .009	FN:17 PRODUCER	04-Feb-2001 00:12	818.2 M	378.7 M

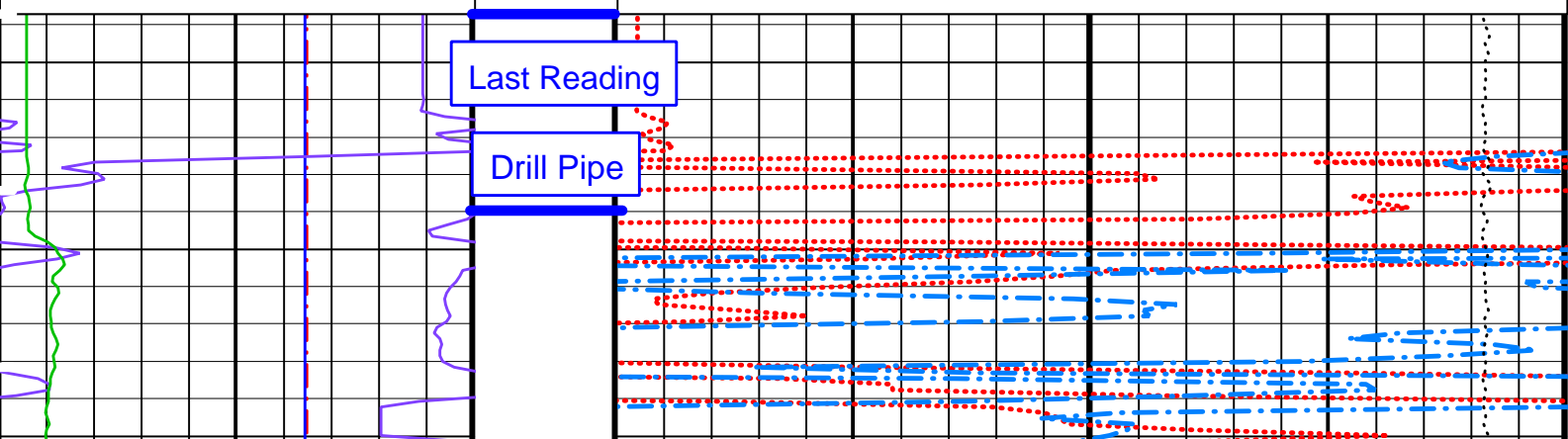
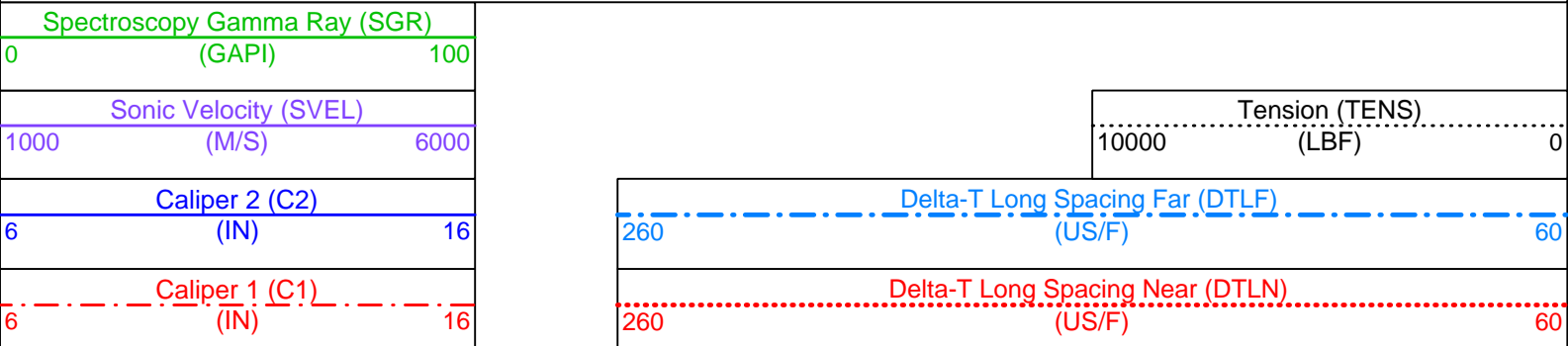
OP System Version: 9C1-303
MCM

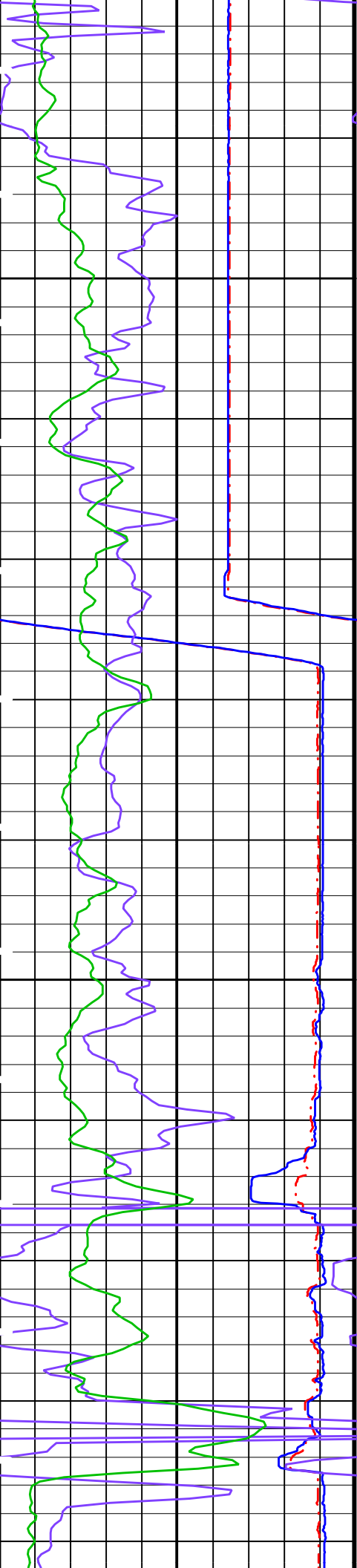
Pass #2

MEST-B	OP91-kp2	NGT-C	OP91-kp2
SDT-C	OP91-kp2	TCC-BF	OP91-kp2

PIP SUMMARY

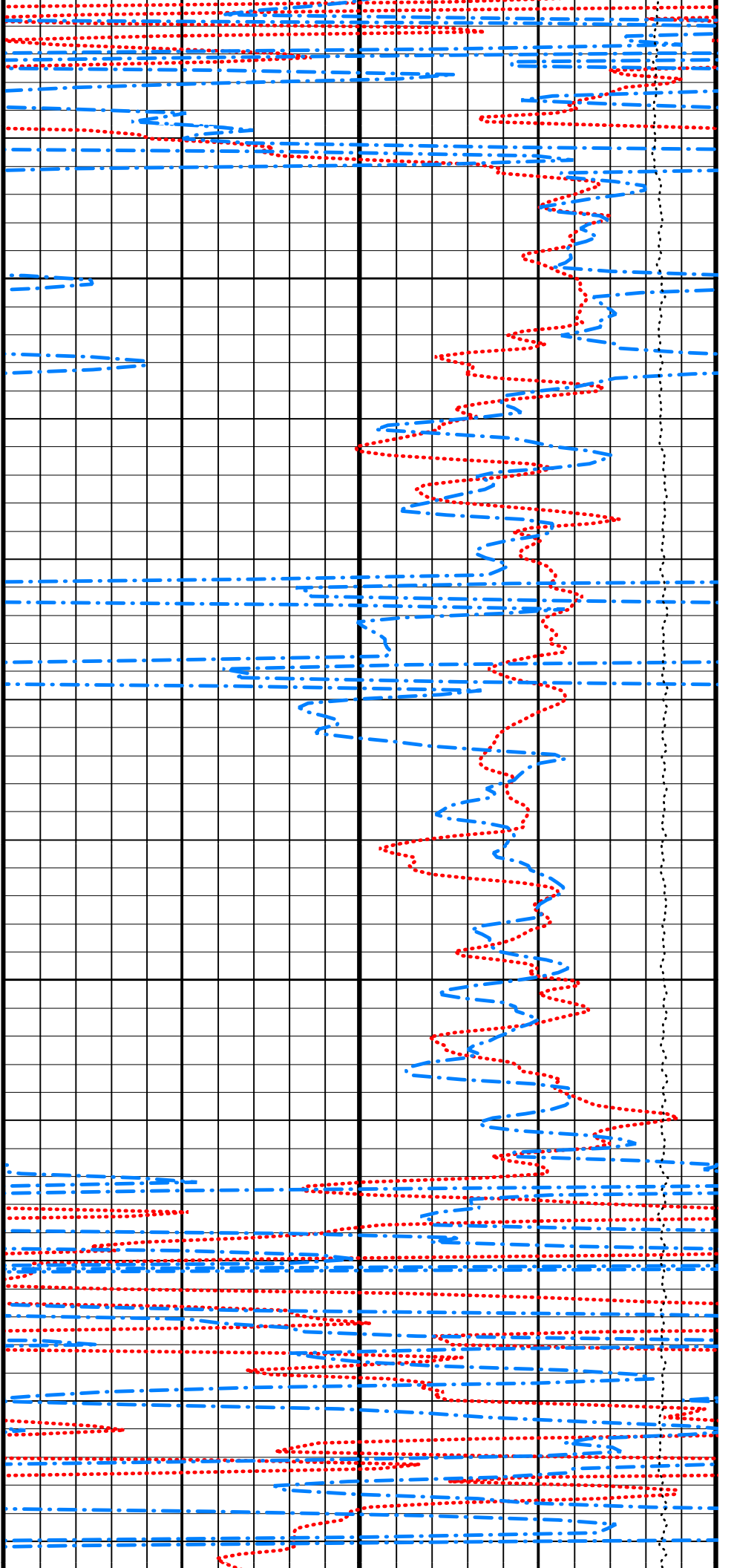
▶ Time Mark Every 60 S

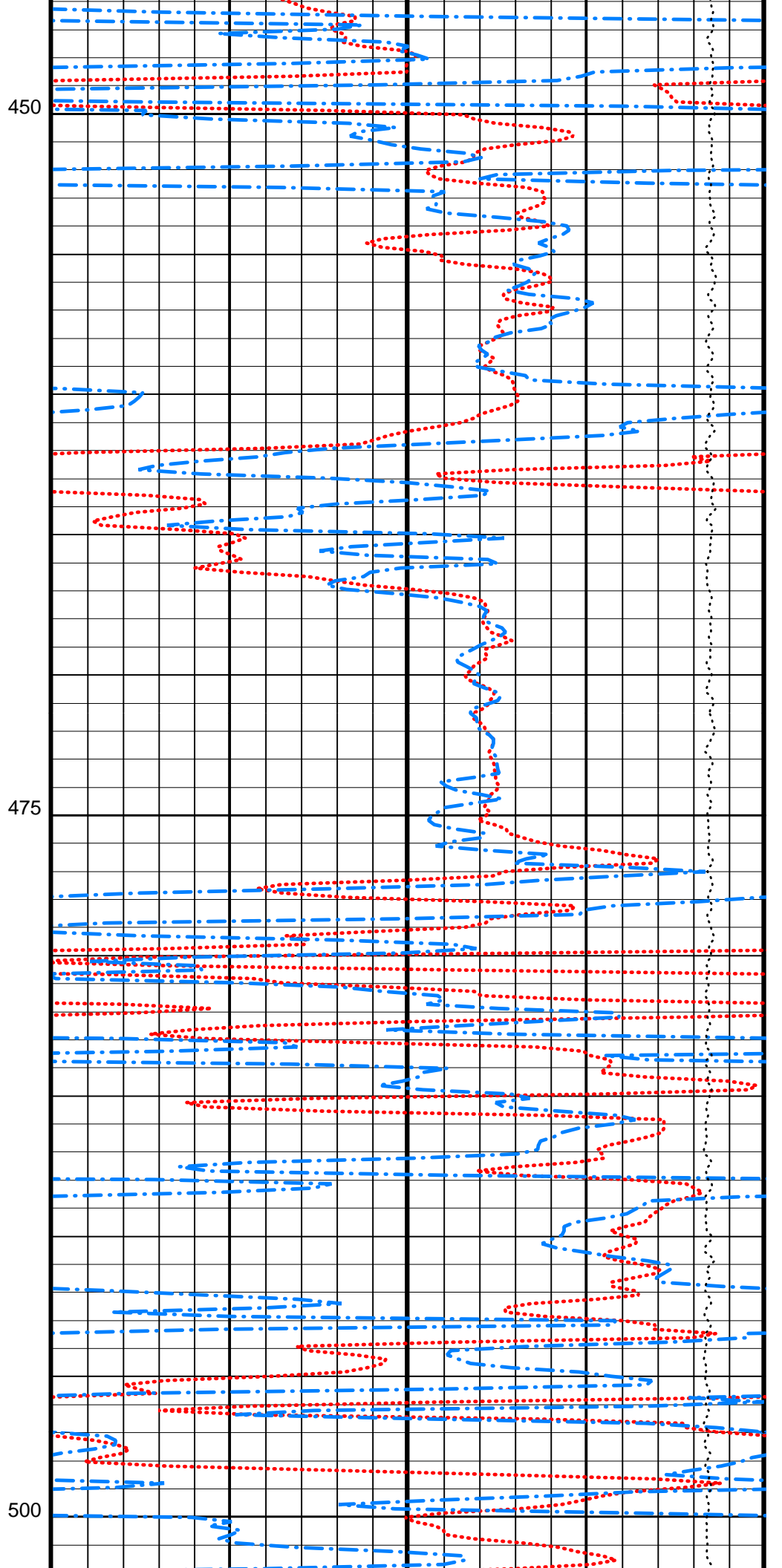
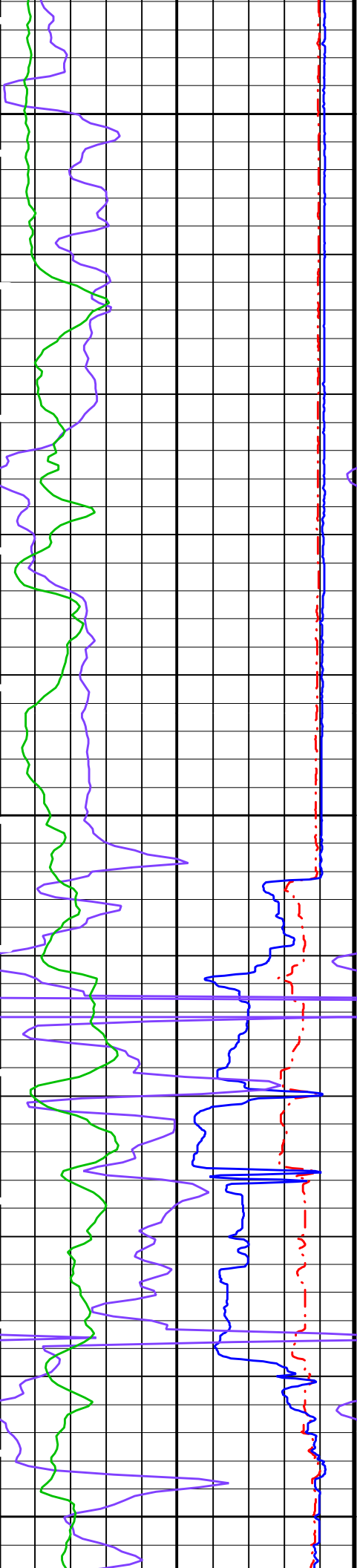


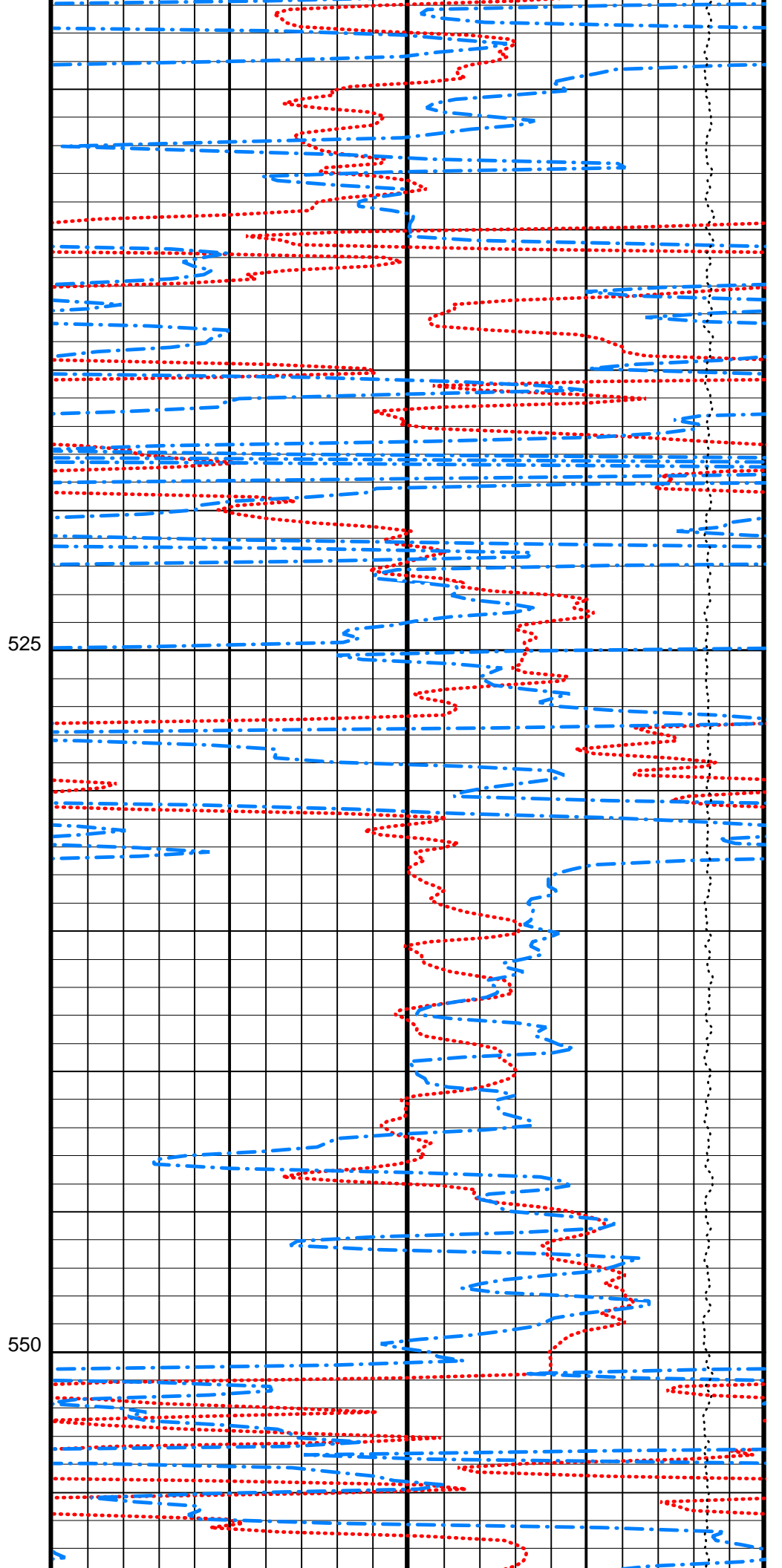
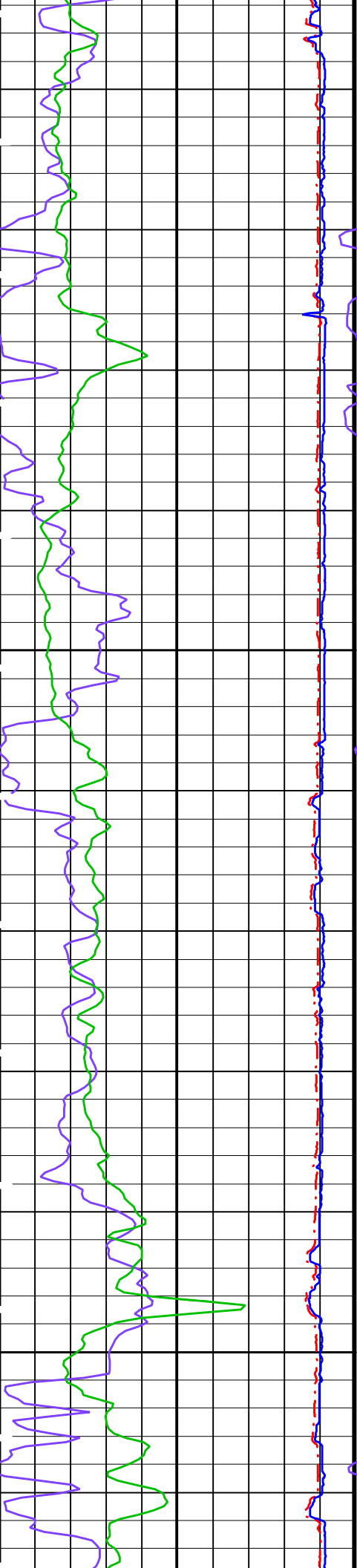


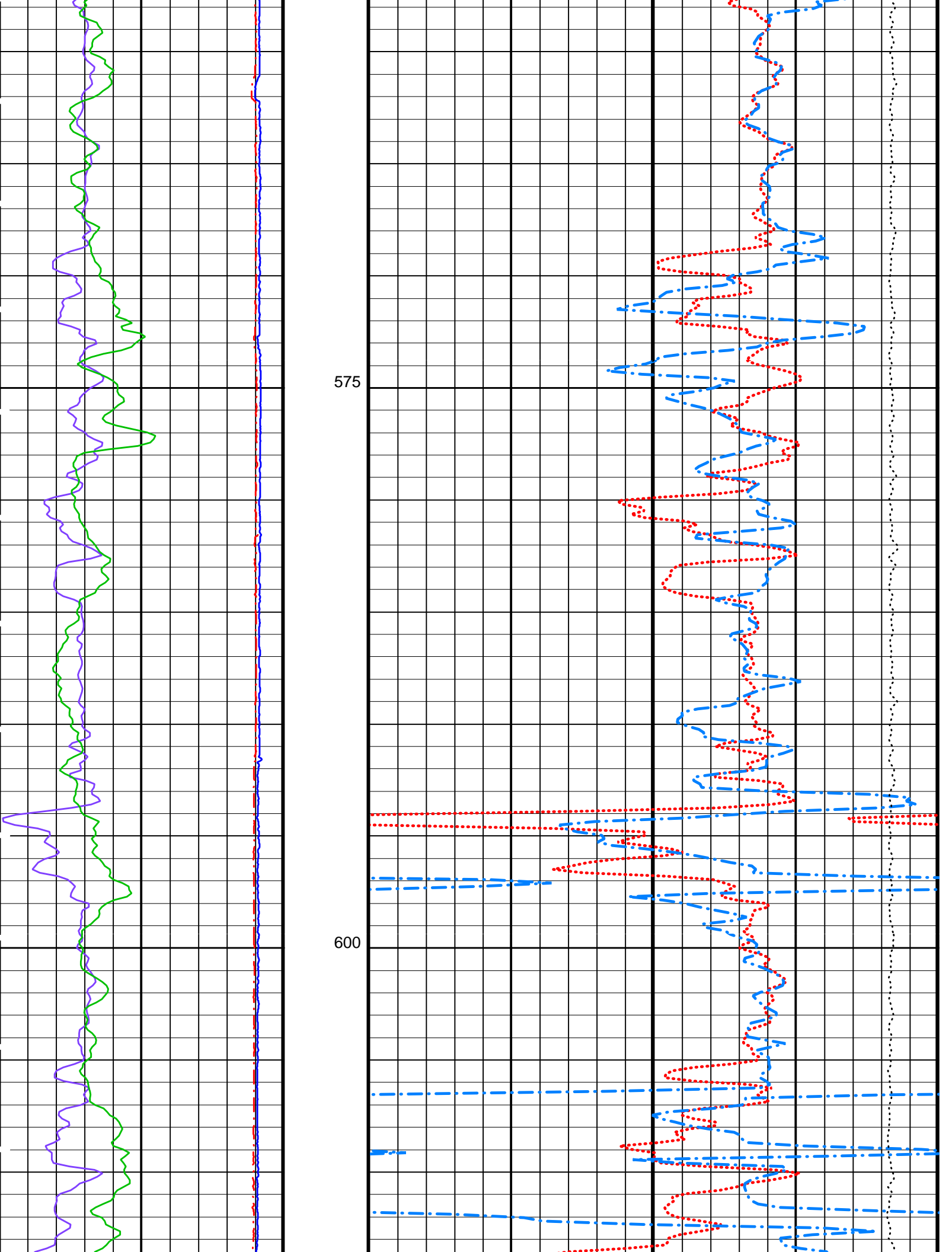
400

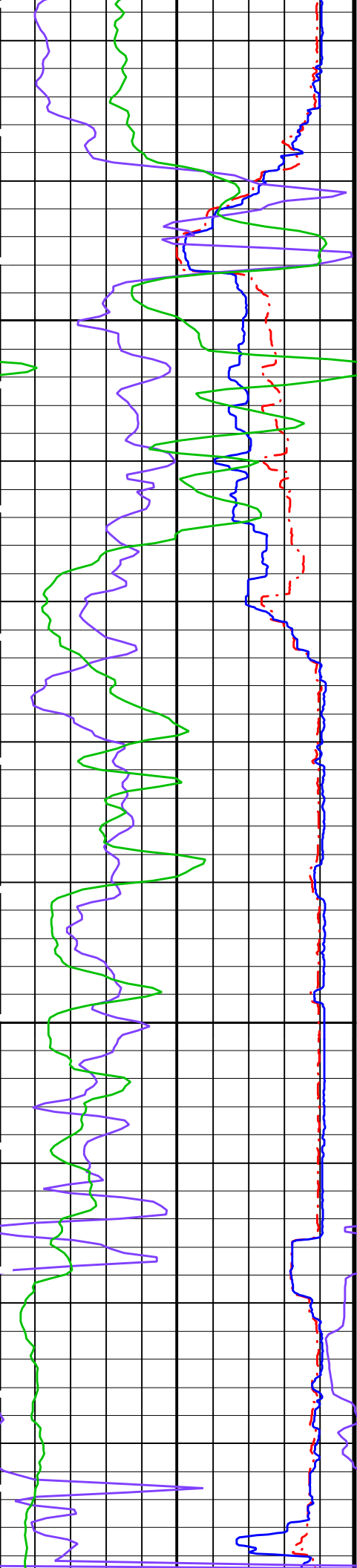
425





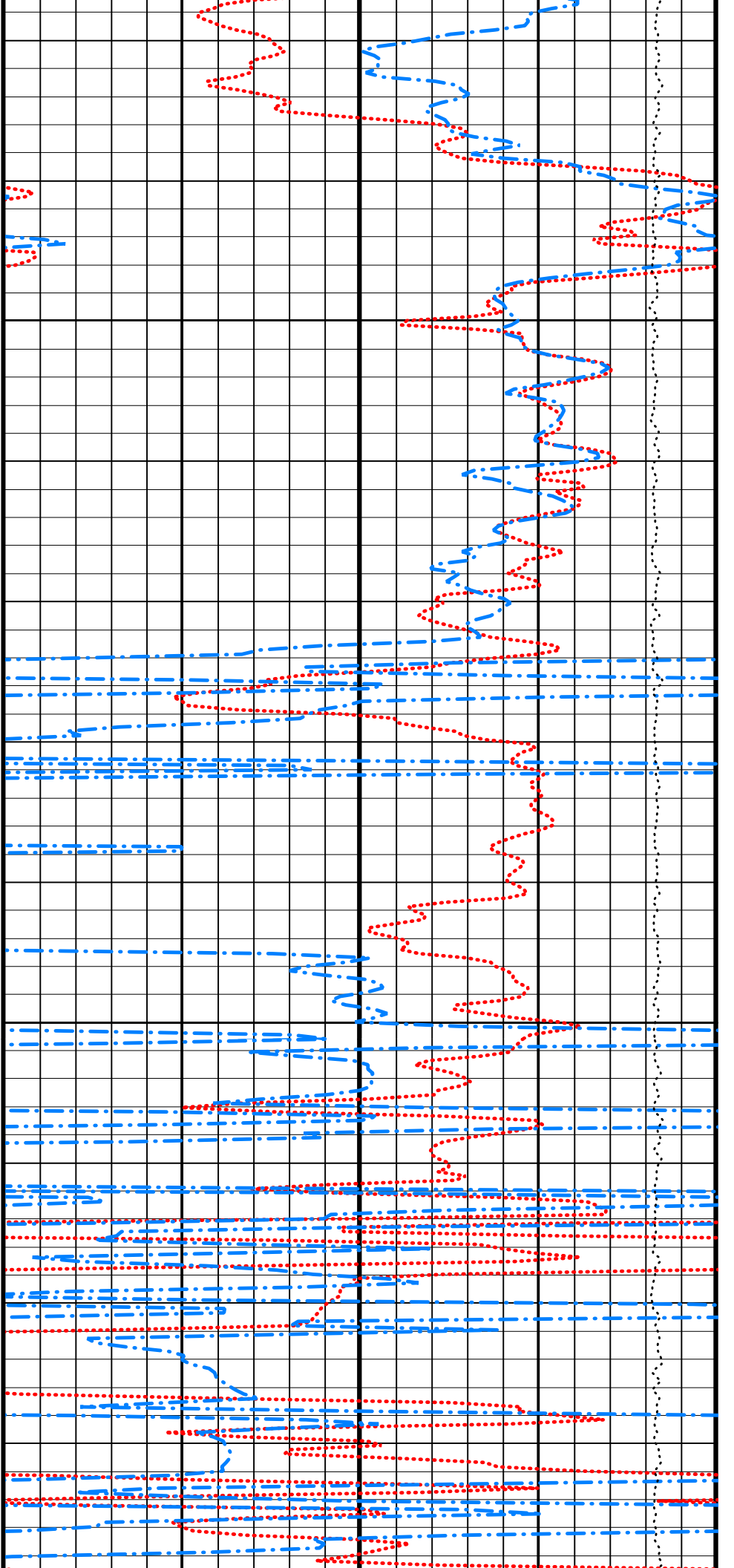


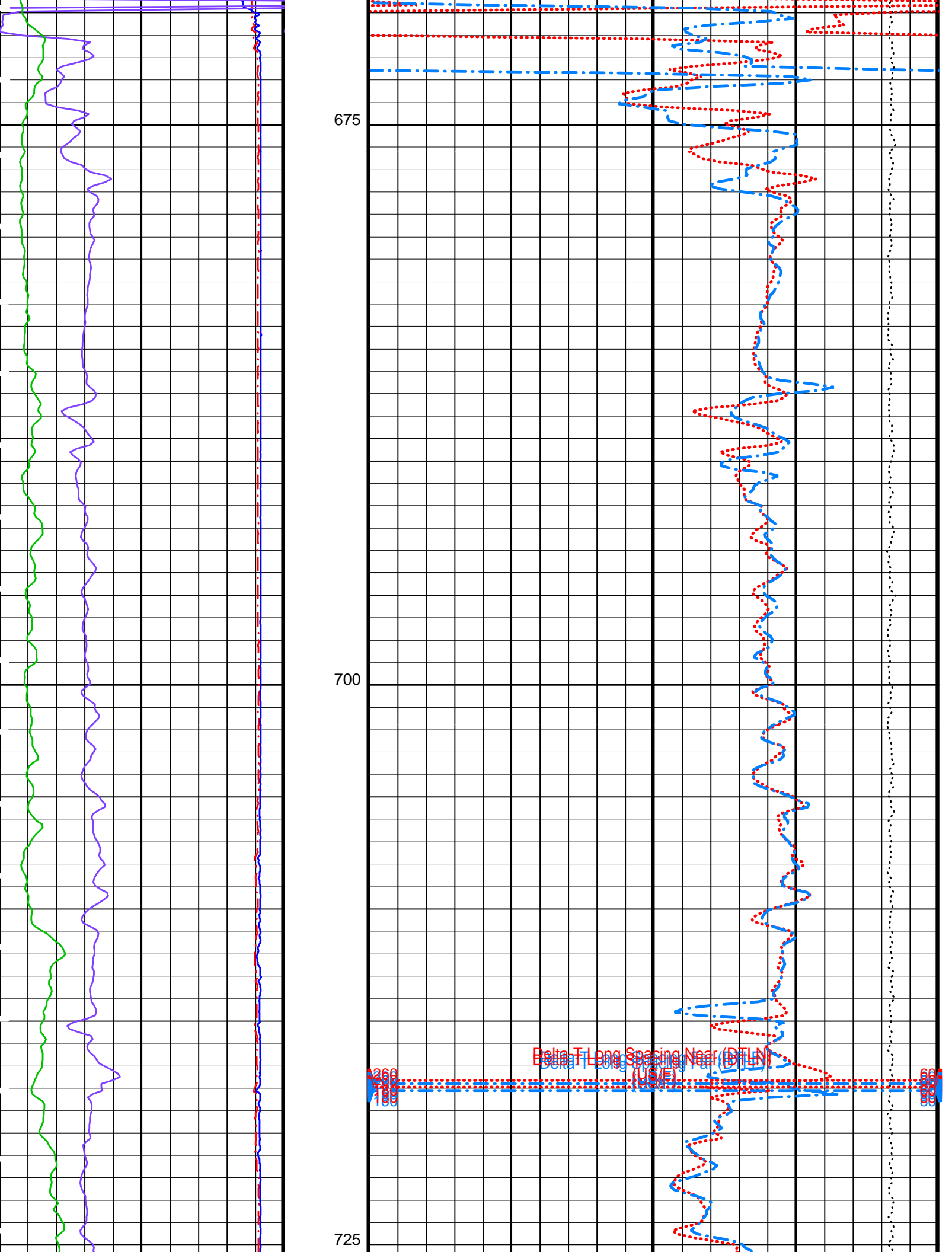


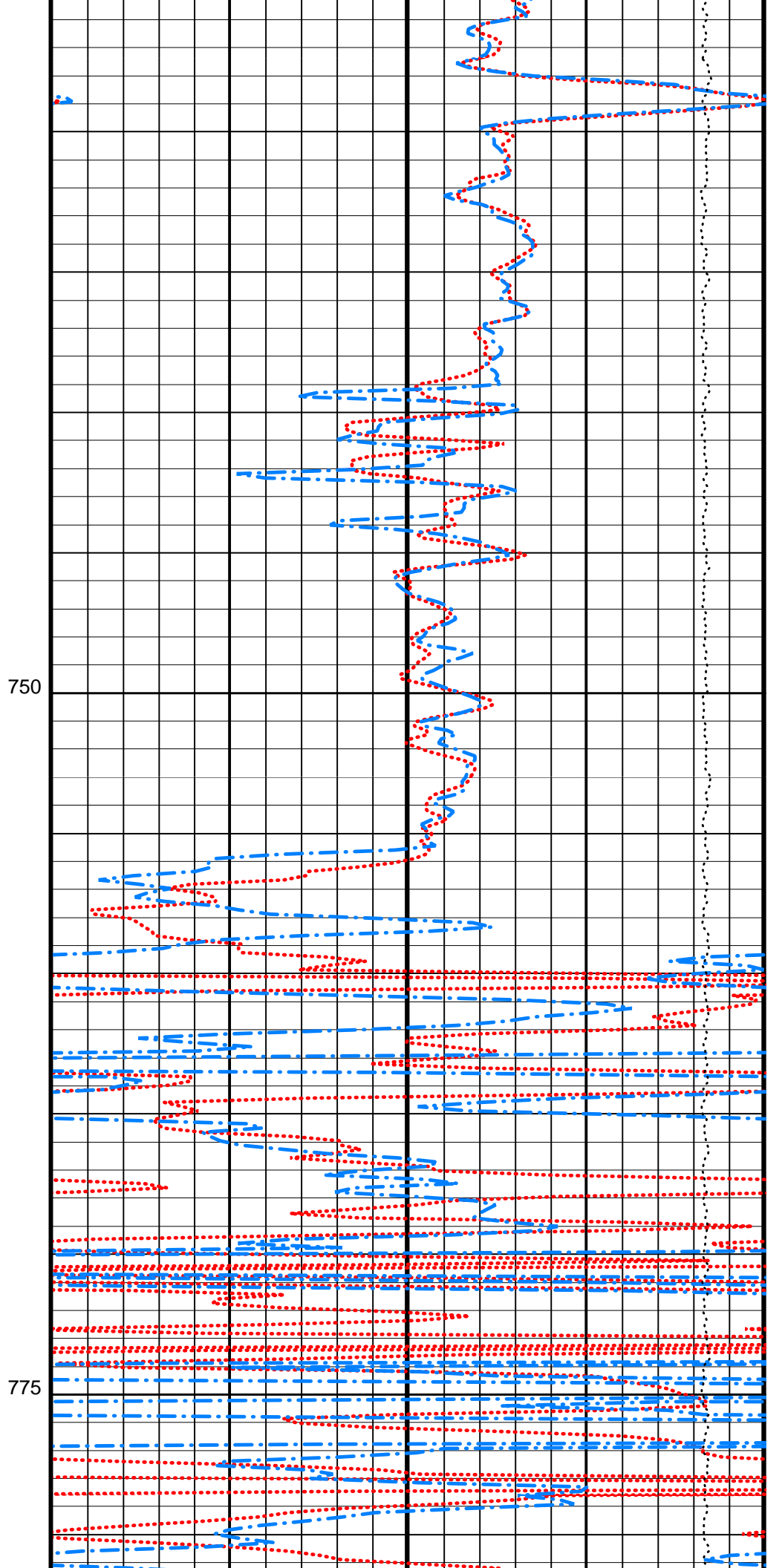
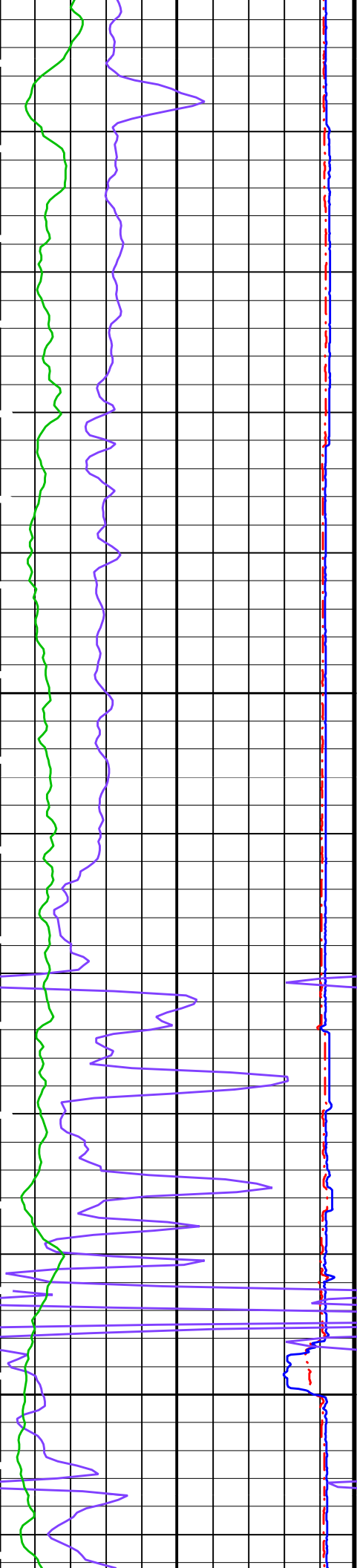


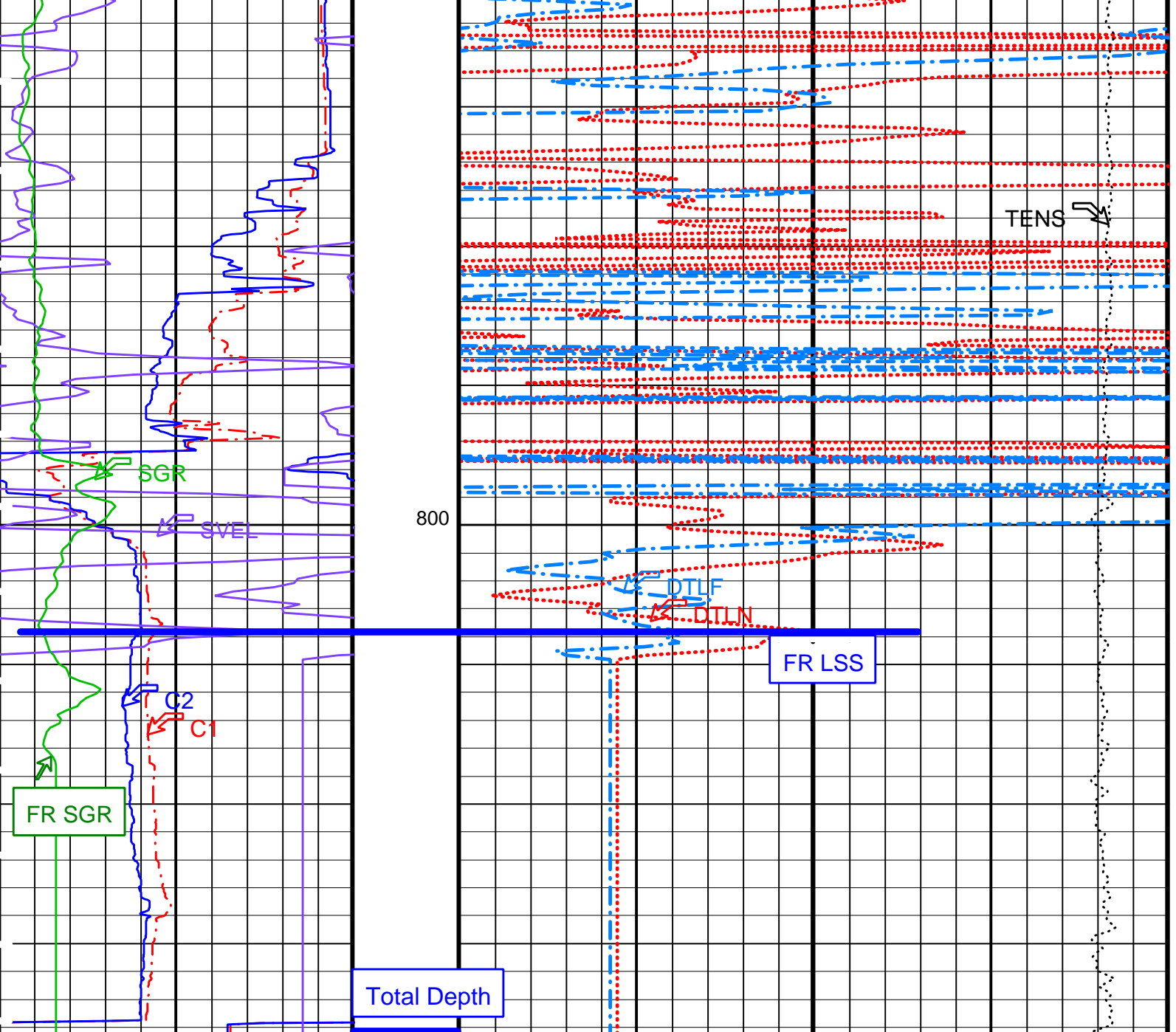
625

650









Caliper 1 (C1) (IN)	6	16	Delta-T Long Spacing Near (DTLN) (US/F)	180	80
Caliper 2 (C2) (IN)	6	16	Delta-T Long Spacing Far (DTLF) (US/F)	180	80
Sonic Velocity (SVEL) (M/S)	1000	6000	Tension (TENS) (LBF)	10000	0
Spectroscopy Gamma Ray (SGR) (GAPI)	0	100			

PIP SUMMARY

Time Mark Every 60 S

Parameters

DLIS Name	Description	Value
BS	Bit Size	9.875 IN
CBAR	Constant Barite	1
CGMI	Spectro Computed Gamma Ray Minimum	0 GAPI
CGSH	Spectro Computed Gamma Ray Shale	100 GAPI
DFD	Drilling Fluid Density	1.10 G/C3
PTOM	Drilling Fluid Temperature	100

DTCM	Delta-T Computation Mode	FULL	0
KMIN	Potassium Minimum		0.02
KSHA	Potassium Shale		LDDB
MODE	Firing Mode	KALMAN	0
NFO	NGT Filtering Option		0
PMUD	Potassium Mud		100
SGMI	Spectro Gamma Ray Minimum		0
SGSH	Spectro Gamma Ray Shale		12
TMIN	Thorium Minimum		0
TSHA	Thorium Shale		0
UMIN	Uranium Minimum		3
USHA	Uranium Shale		

Format: SONI Vertical Scale: 1:200 Graphics File Created: 04-Feb-2001 00:12

OP System Version: 9C1-303
MCM

MEST-B	OP91-kp2	NGT-C	OP91-kp2
SDT-C	OP91-kp2	TCC-BF	OP91-kp2

Output DLIS Files

DEFAULT	MESTB .009	FN:16 PRODUCER	04-Feb-2001 00:12
FMS_CUST	MESTB .009	FN:17 PRODUCER	04-Feb-2001 00:12

Output DLIS Files

DEFAULT	MESTB .008	FN:14 PRODUCER	03-Feb-2001 22:18	837.9 M	378.6 M
FMS_CUST	MESTB .008	FN:15 PRODUCER	03-Feb-2001 22:18	837.9 M	378.6 M

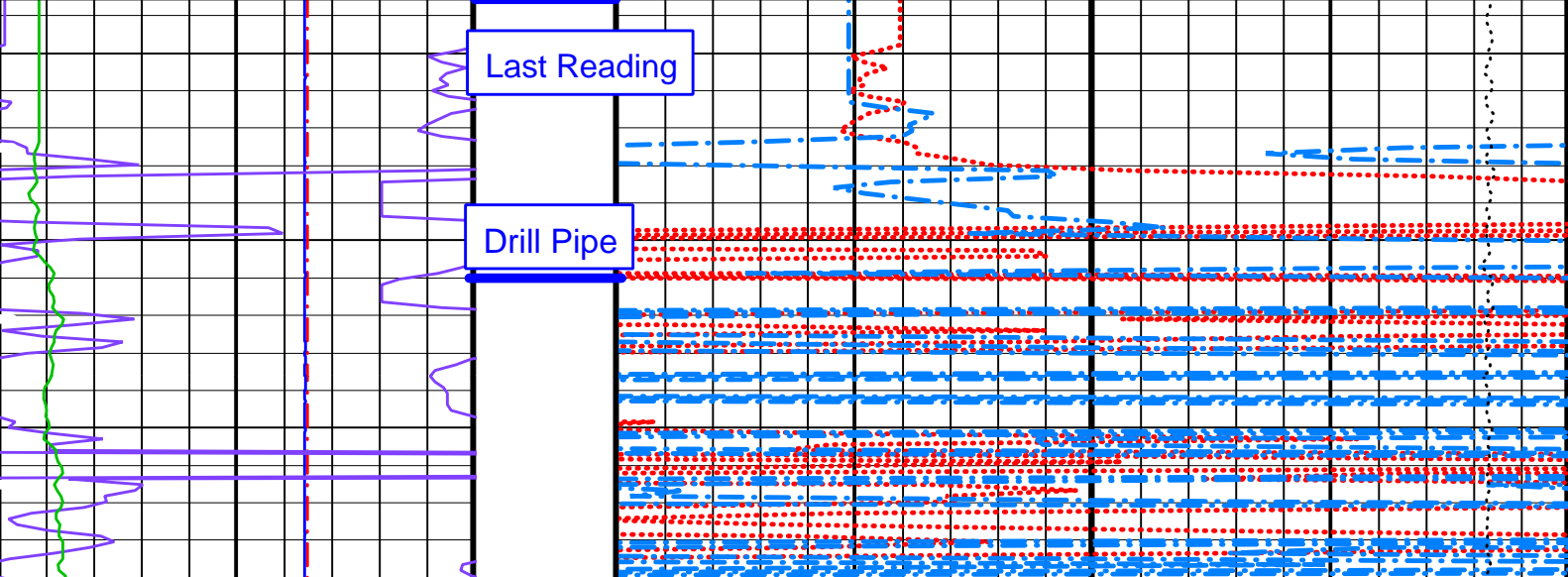
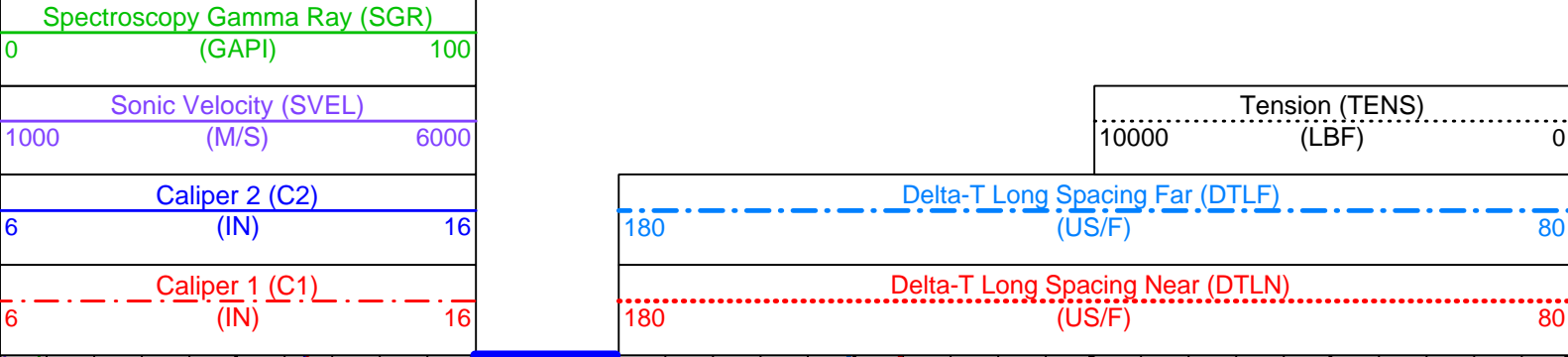
OP System Version: 9C1-303
MCM

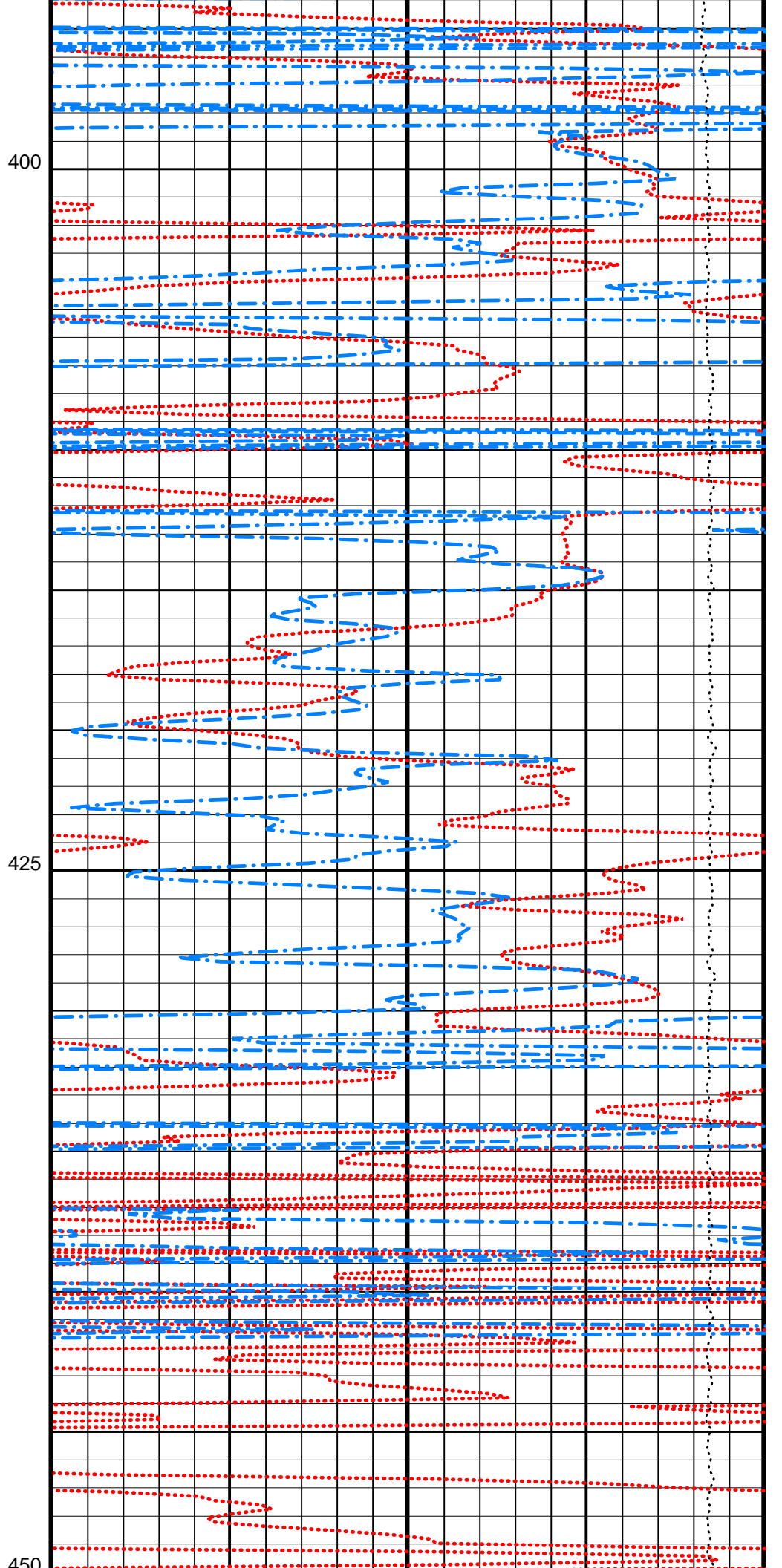
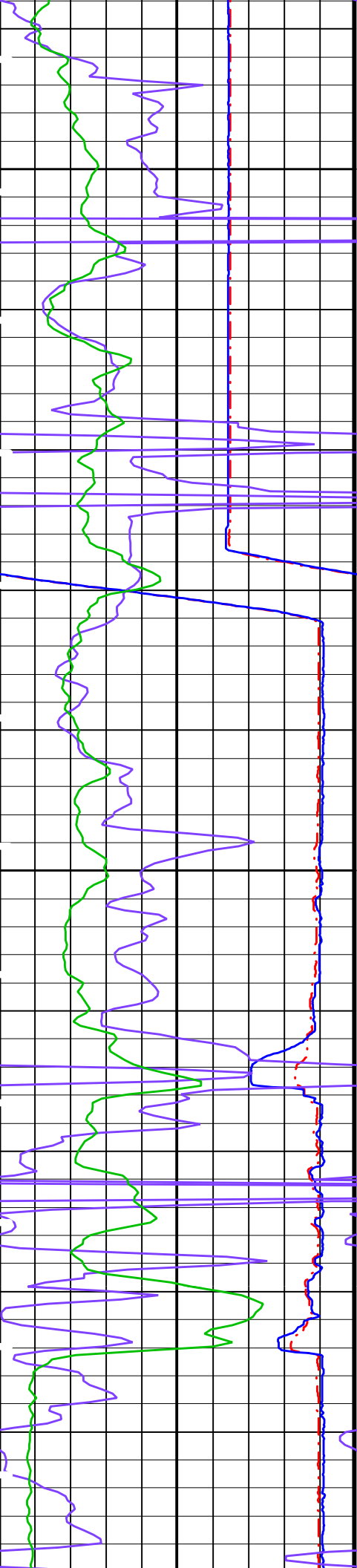
Pass#1

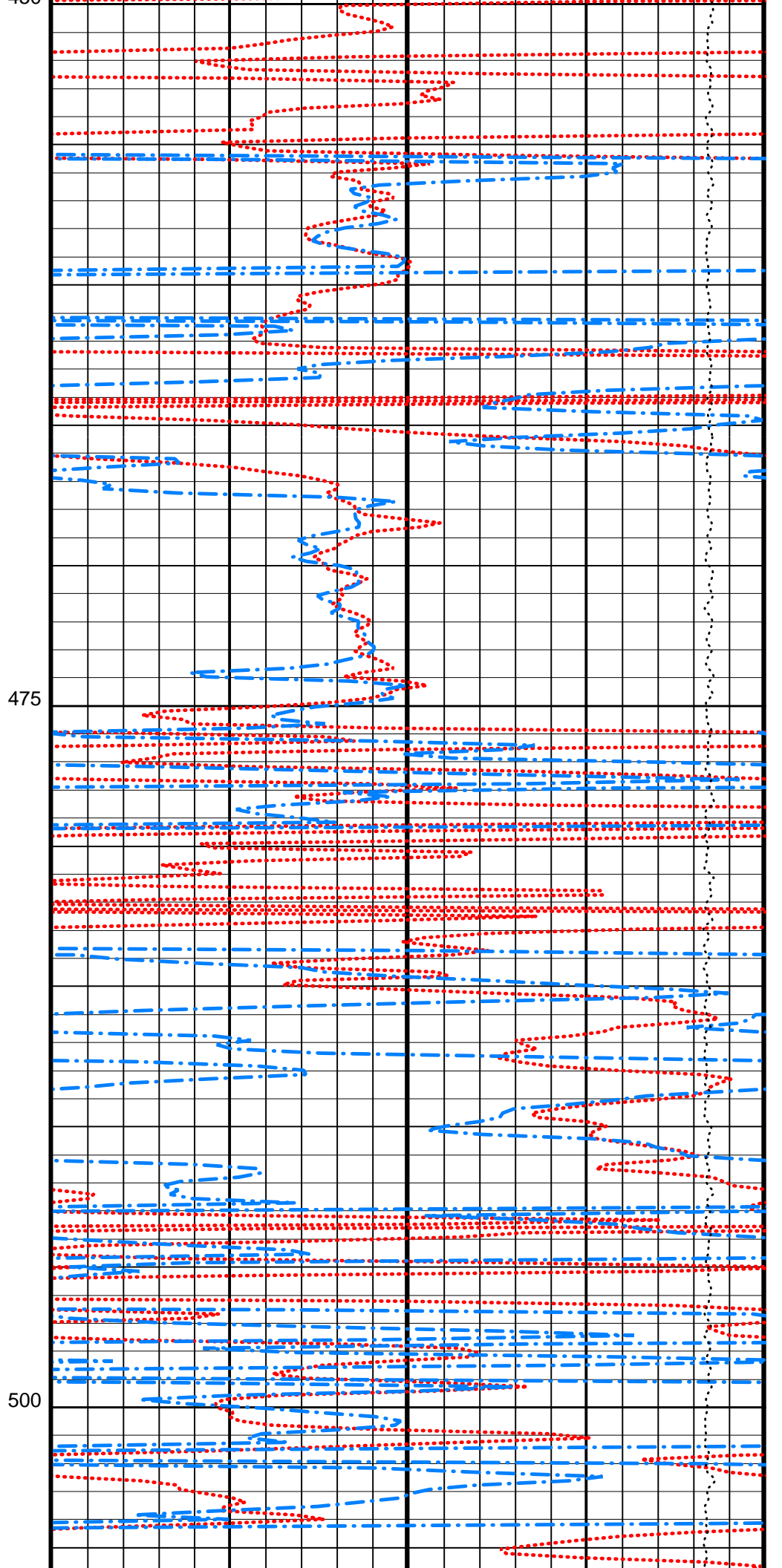
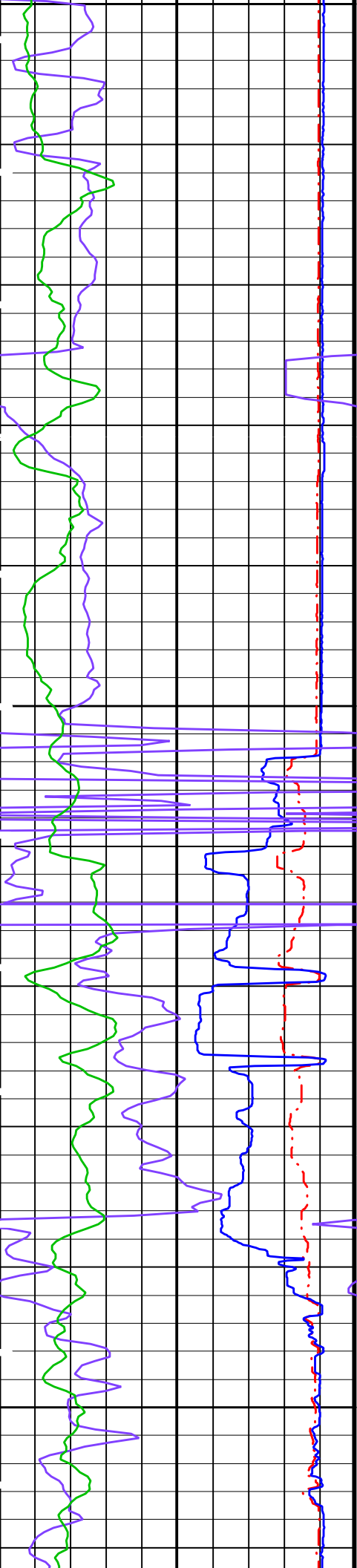
MEST-B	OP91-kp2	NGT-C	OP91-kp2
SDT-C	OP91-kp2	TCC-BF	OP91-kp2

PIP SUMMARY

Time Mark Every 60 S

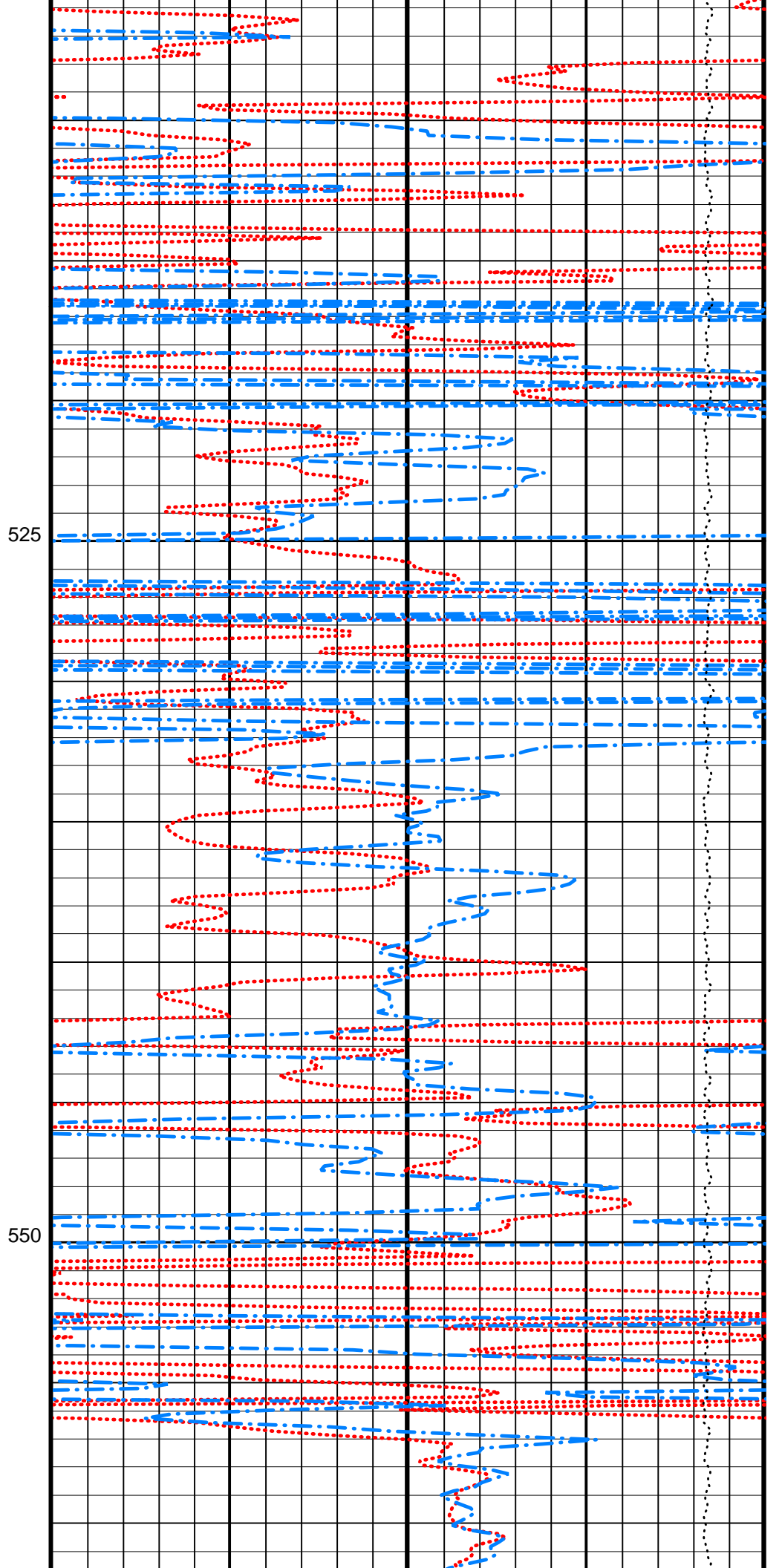
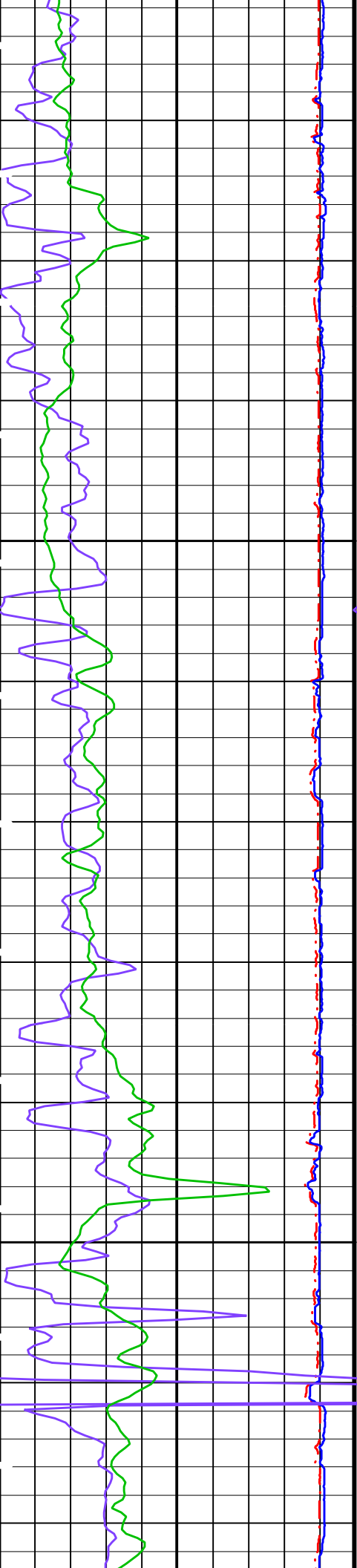


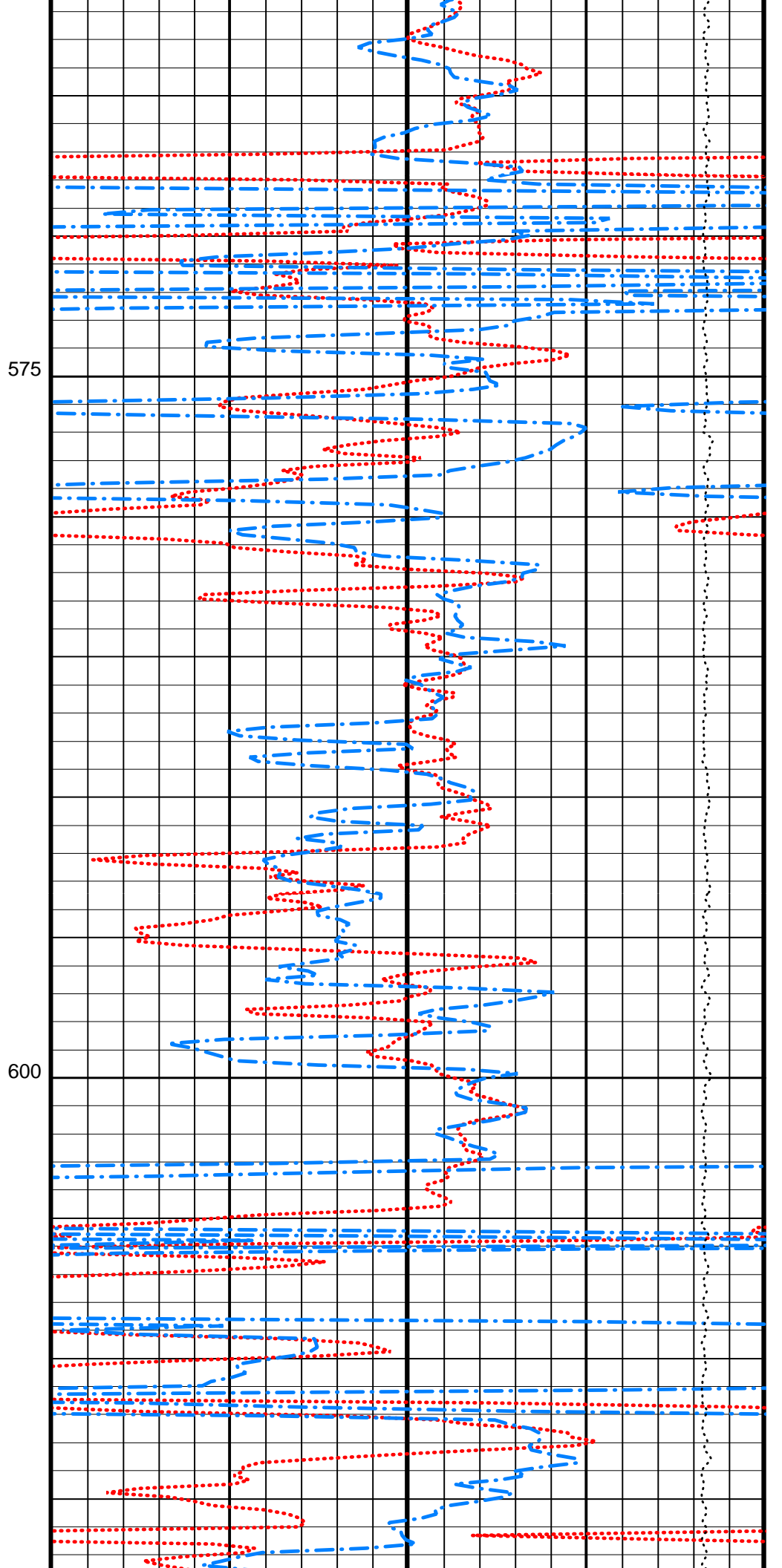
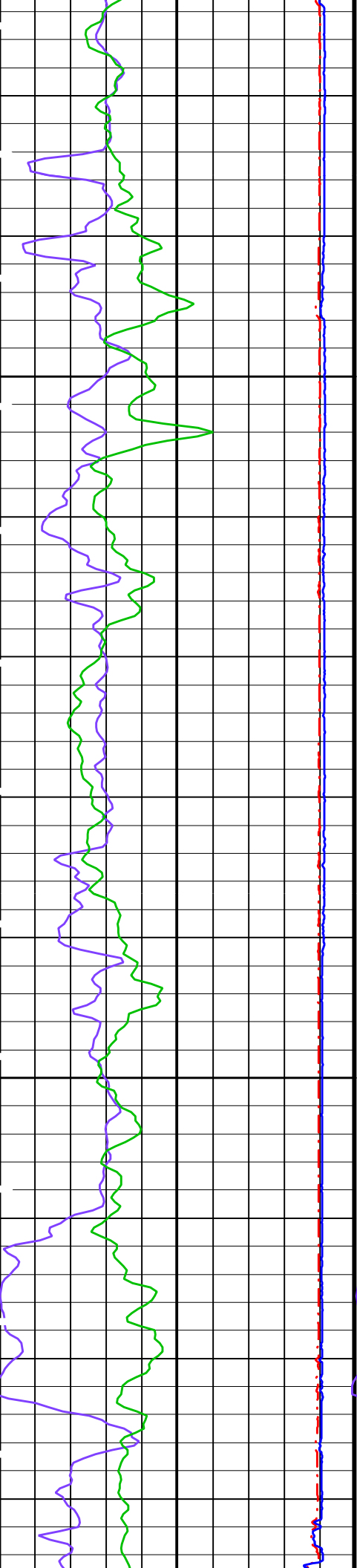


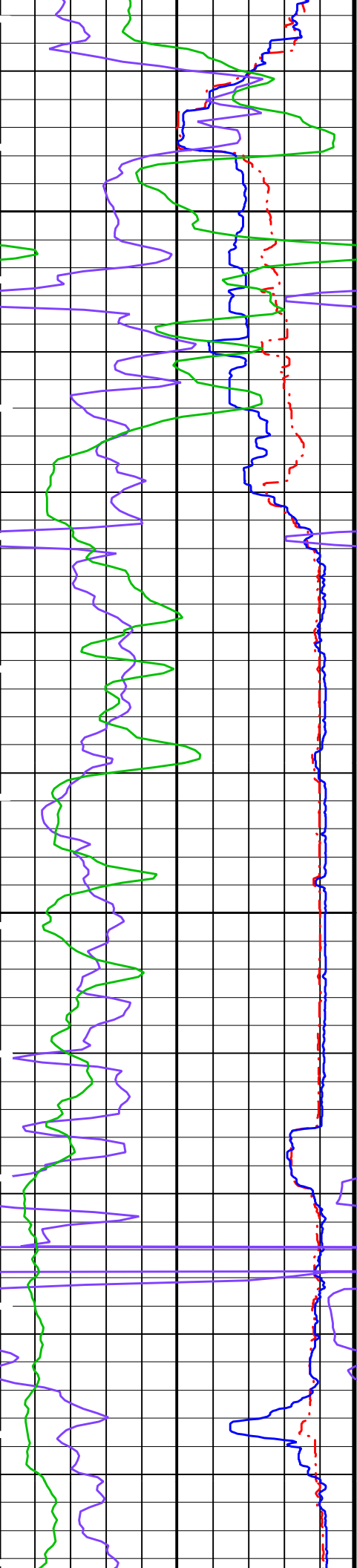


475

500

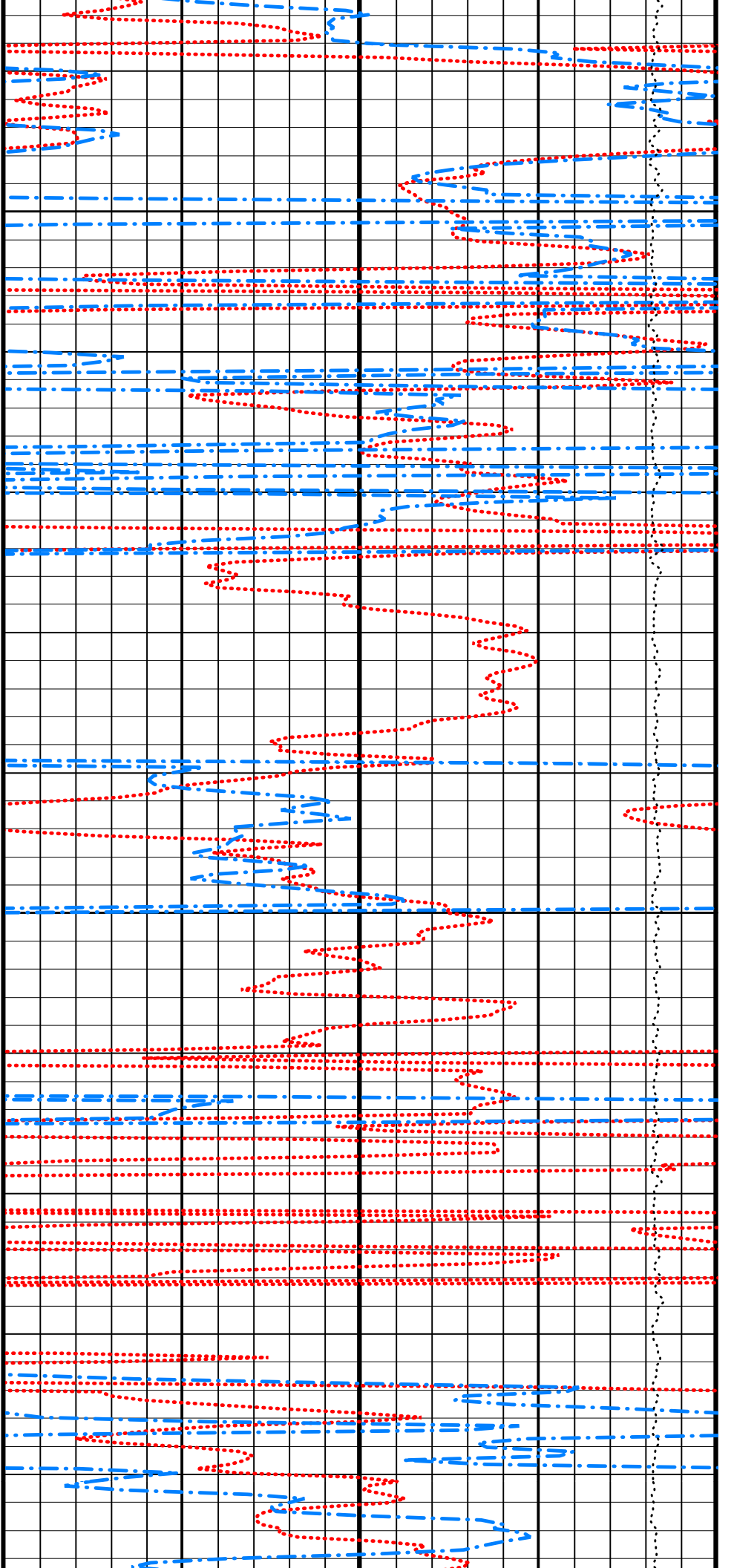


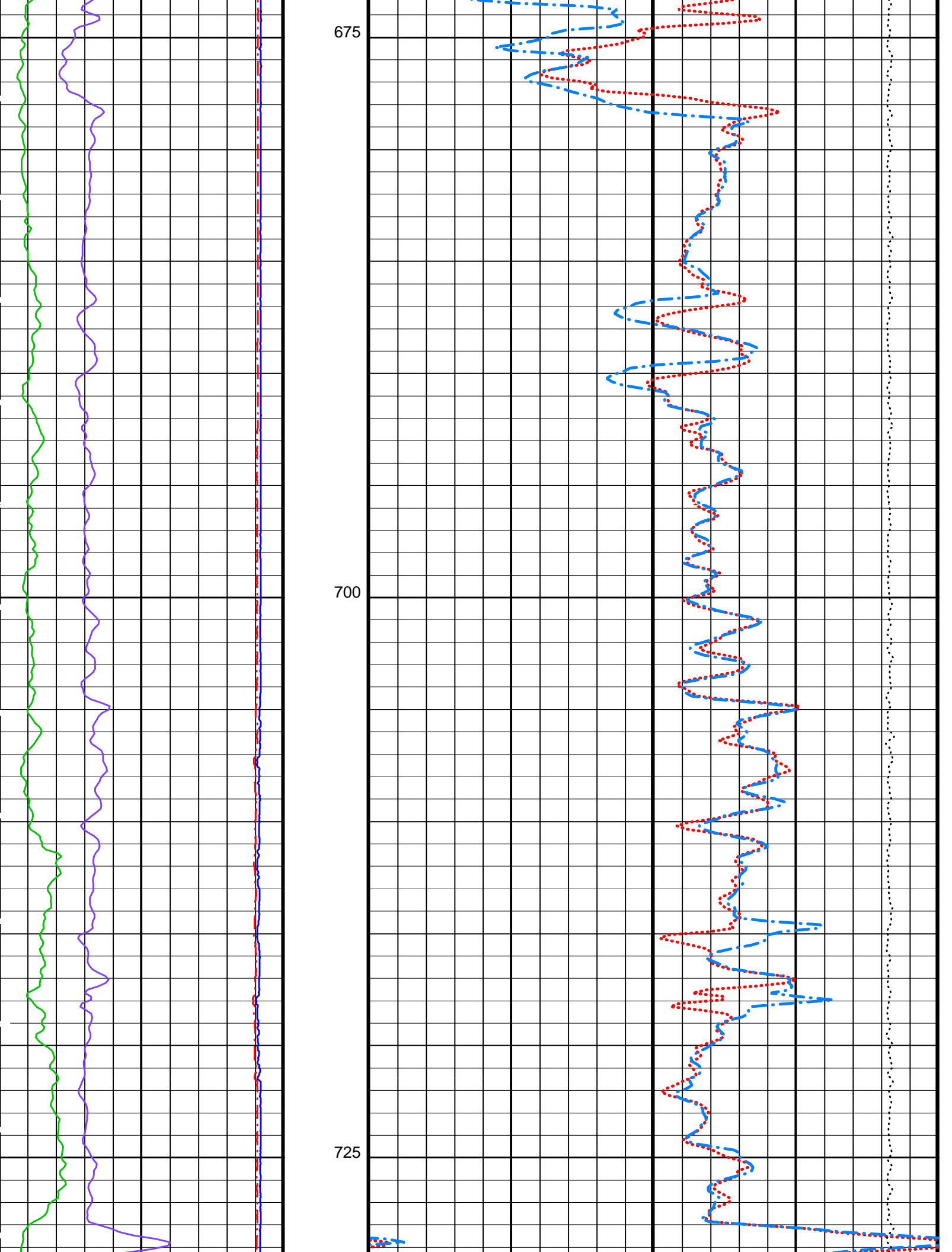


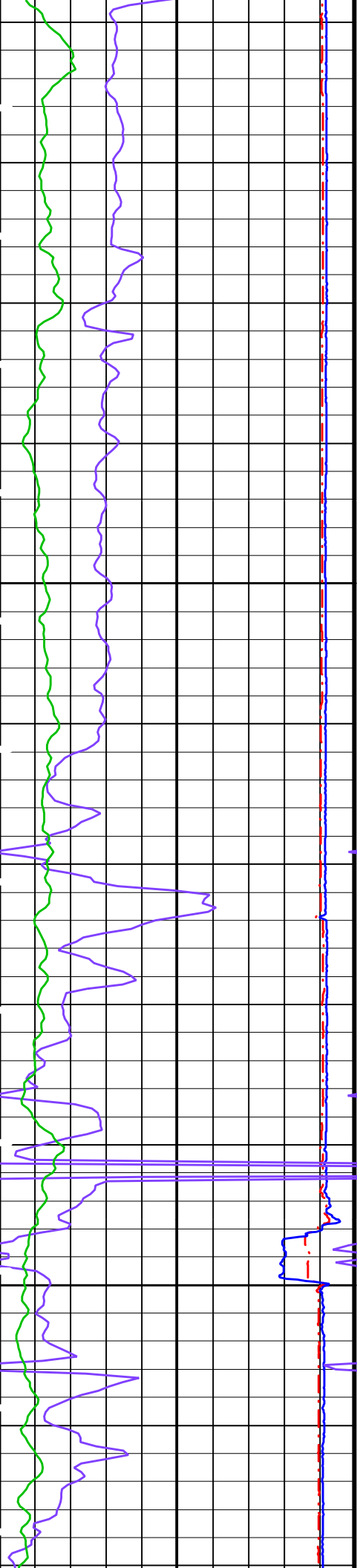


625

650

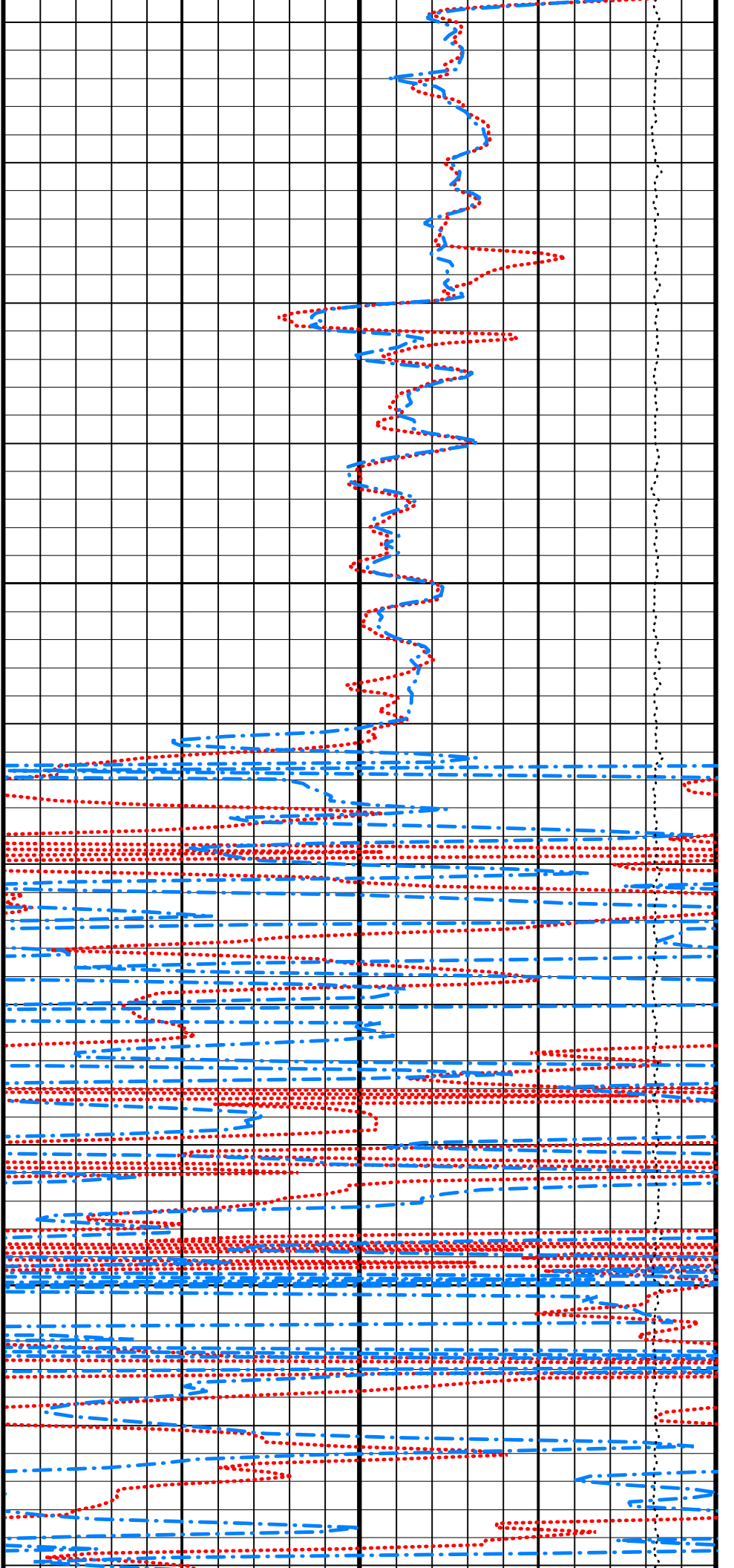


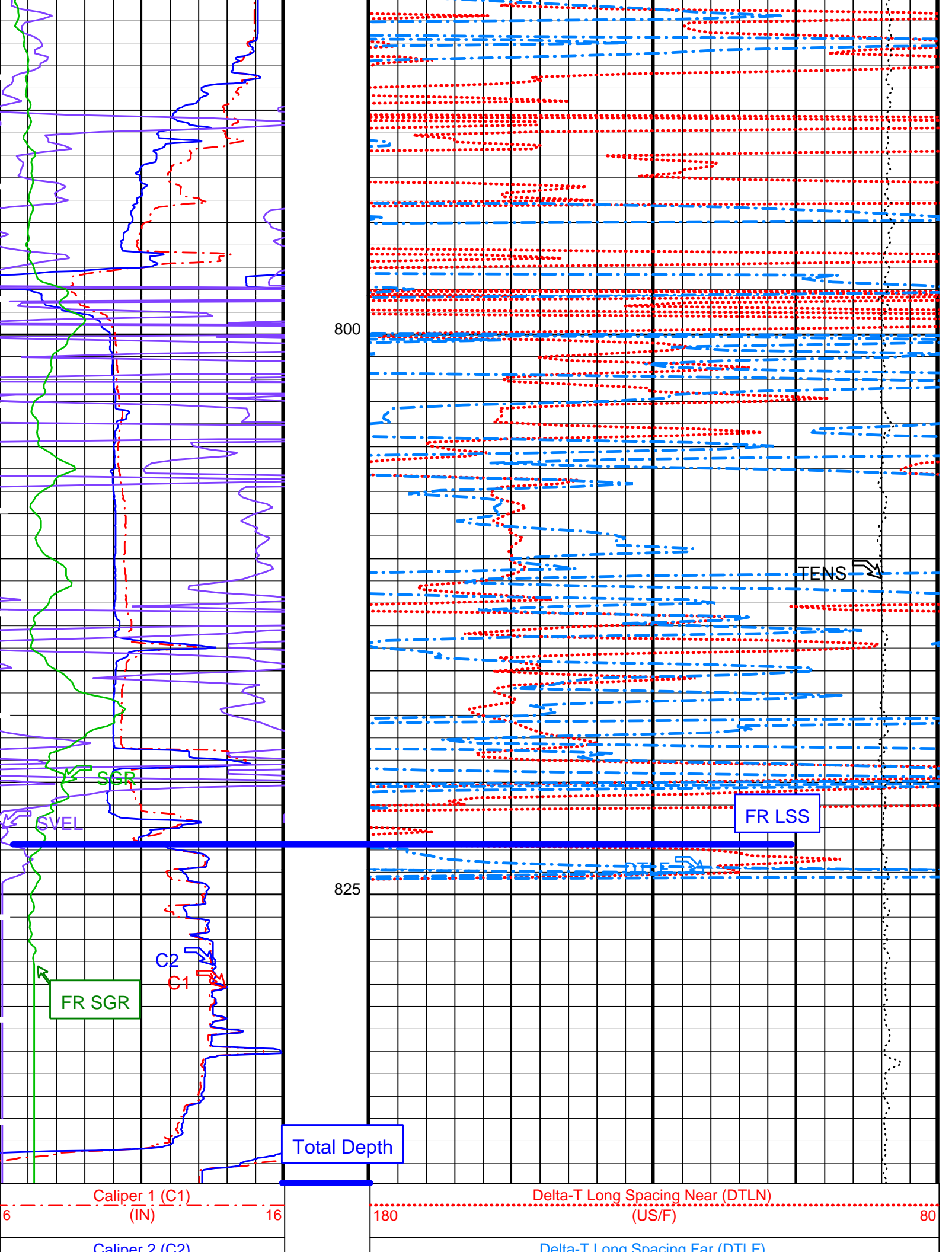




750

775





6	(IN)	16	180	(US/F)	80
Sonic Velocity (SVEL)			Tension (TENS)		
1000	(M/S)	6000	10000	(LBF)	0
Spectroscopy Gamma Ray (SGR)					
0	(GAPI)	100			

PIP SUMMARY

Time Mark Every 60 S

Parameters

DLIS Name	Description	Value	
BS	Bit Size	9.875	IN
CBAR	Constant Barite	1	
CGMI	Spectro Computed Gamma Ray Minimum	0	GAPI
CGSH	Spectro Computed Gamma Ray Shale	100	GAPI
DFD	Drilling Fluid Density	1.10	G/C3
DTCM	Delta-T Computation Mode	FULL	
KMIN	Potassium Minimum	0	
KSHA	Potassium Shale	0.02	
MODE	Firing Mode	LDDB	
NFO	NGT Filtering Option	KALMAN	
PMUD	Potassium Mud	0	%
SGMI	Spectro Gamma Ray Minimum	0	GAPI
SGSH	Spectro Gamma Ray Shale	100	GAPI
TMIN	Thorium Minimum	0	PPM
TSHA	Thorium Shale	12	PPM
UMIN	Uranium Minimum	0	PPM
USHA	Uranium Shale	3	PPM

Format: SONI Vertical Scale: 1:200 Graphics File Created: 03-Feb-2001 22:18

OP System Version: 9C1-303

MCM

MEST-B	OP91-kp2	NGT-C	OP91-kp2
SDT-C	OP91-kp2	TCC-BF	OP91-kp2

Output DLIS Files

DEFAULT	MESTB .008	FN:14	PRODUCER	03-Feb-2001 22:18
FMS_CUST	MESTB .008	FN:15	PRODUCER	03-Feb-2001 22:18

COMPANY:	Lamont Doherty	BOTTOM LOG INTERVAL	836 m
		SCHLUMBERGER DEPTH	838 m
WELL:	ODP Leg 194, Site 1196A	DEPTH DRILLER	987.4 m
FIELD:	Marion Plateau	KELLY BUSHING	11.3 m
Country:	Australia	DRILL FLOOR	11 m
Ocean:	Pacific Ocean	GROUND LEVEL	-315.2 m

Schlumberger

Long Spacing Sonic Log