

DISCLAIMER
 THE USE OF AND RELIANCE UPON THIS RECORDED-DATA BY THE HEREIN NAMED COMPANY (AND ANY OF ITS AFFILIATES, PARTNERS, REPRESENTATIVES, AGENTS, CONSULTANTS AND EMPLOYEES) IS SUBJECT TO THE TERMS AND CONDITIONS AGREED UPON BETWEEN SCHLUMBERGER AND THE COMPANY, INCLUDING: (a) RESTRICTIONS ON USE OF THE RECORDED-DATA; (b) DISCLAIMERS AND WAIVERS OF WARRANTIES AND REPRESENTATIONS REGARDING COMPANY'S USE OF AND RELIANCE UPON THE RECORDED-DATA; AND (c) CUSTOMER'S FULL AND SOLE RESPONSIBILITY FOR ANY INFERENCE DRAWN OR DECISION MADE IN CONNECTION WITH THE USE OF THIS RECORDED-DATA.


OTHER SERVICES1 OS1: None OS2: OS3: OS4: OS5:	OTHER SERVICES2 OS1: OS2: OS3: OS4: OS5:
--	---

REMARKS: RUN NUMBER 1 Hole Cored With RCB. WHC used on all runs. Could not get past 566 MBRF. Log Measured in Meters Below Rig Floor (MBRF). Sea Floor Driller- 330.5 MBRF. Sea Floor Logger- 331.5 MBRF. Drill Pipe Driller- 406 MBRF. Drill Pipe Logger- 405 MBRF. Total Depth Driller- 853.1 MBRF. Total Depth Logger- 562.5 MBRF. Due to hole conditions no further logging was attempted. Sepiolite Mud used to flush the hole.	REMARKS: RUN NUMBER 2
--	-----------------------

RUN 1			RUN 2		
SERVICE ORDER #:			SERVICE ORDER #:		
PROGRAM VERSION:		9C1-303	PROGRAM VERSION:		
FLUID LEVEL:			FLUID LEVEL:		
LOGGED INTERVAL	START	STOP	LOGGED INTERVAL	START	STOP

EQUIPMENT DESCRIPTION

RUN 1		RUN 2	
SURFACE EQUIPMENT			
SFT-281 24			
SFT-178 4722			
GSR-U 135			
WITM (DTS)-A			

DOWNHOLE EQUIPMENT			
LEH-QT		28.69	
LEH-QT			
DTC-H	CTEM	27.52	27.80
ECH-KC	TelStatus	26.89	
	ToolStatu		
HNGS-BA	Upper_1	26.19	26.89
HNGS BA 27	Lower_2	25.98	

HNGS-BA 27
HNSH-BA 27

Lower_2

23.95

ILE-D
ILE-D

24.39

APS-BA
APS-BA 22
APH-AC 22
MNTR-F 4185

Status
Minitron
Near TD
Near Arr
Near
Far Arr
Far
Far TD

21.95

19.51
19.43
19.30
19.20

NPLC-B
NPLC-B 79
NPH-B 82

Status

18.01

16.78

HLDS
GSR-Z 1846
HLDV-D 35
HLDS-D 35
HEH-H 35
HLDP-C 12

Caliper
SS LS Status

15.56

11.51

DTA-A
ECH-KE
DTA-A

10.74

DIT-E
DIC-EB 171
MIH-ZA 174
DIS-HB 129

9.52

SP
Deep Ind
Aux Meas SFL
Med Ind
Status HV DF
Tension

3.15
2.90
1.98
1.83
0.00

TOOL ZERO

MAXIMUM STRING DIAMETER 3.88 IN
MEASUREMENTS RELATIVE TO TOOL ZERO
ALL LENGTHS IN METERS

Output DLIS Files

DEFAULT	DITE .003	FN:3	PRODUCER	10-Feb-2001 22:39	562.4 M	322.3 M
TCOMBO_CUST	DITE .003	FN:4	PRODUCER	10-Feb-2001 22:39	562.4 M	320.3 M

OP System Version: 9C1-303
MCM

MAIN UP LOG

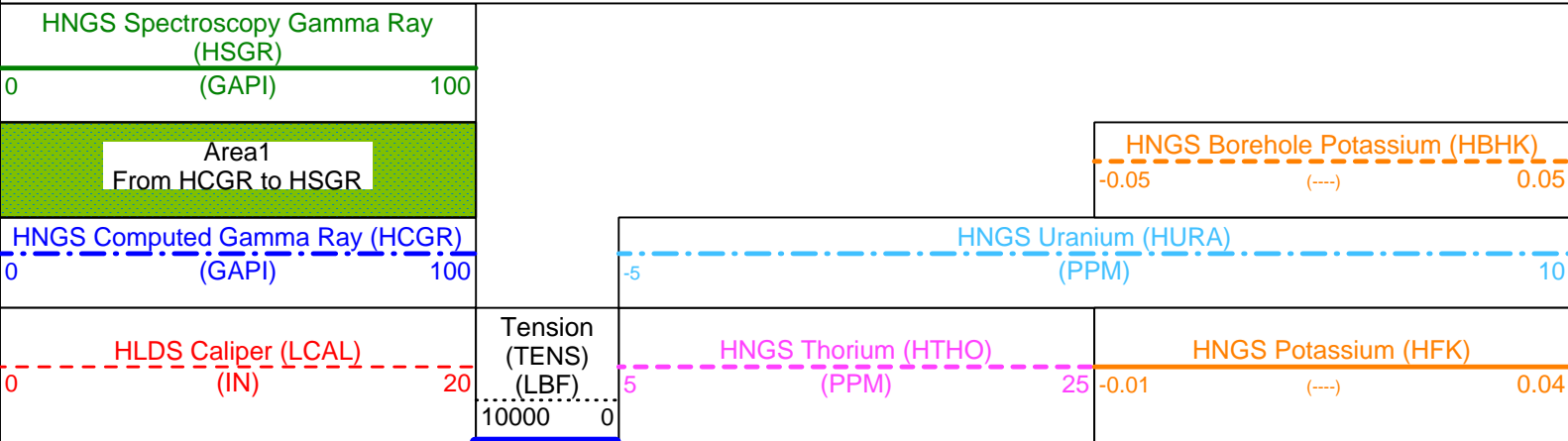
DIT-E	OP91-kp2	DTA-A	OP91-kp2
HLDS	OP91-kp2	NPLC-B	OP91-kp2
APS-BA	OP91-kp2	HNGS-BA	OP91-kp2
DTC-H	OP91-kp2		

Changed Parameter Summary

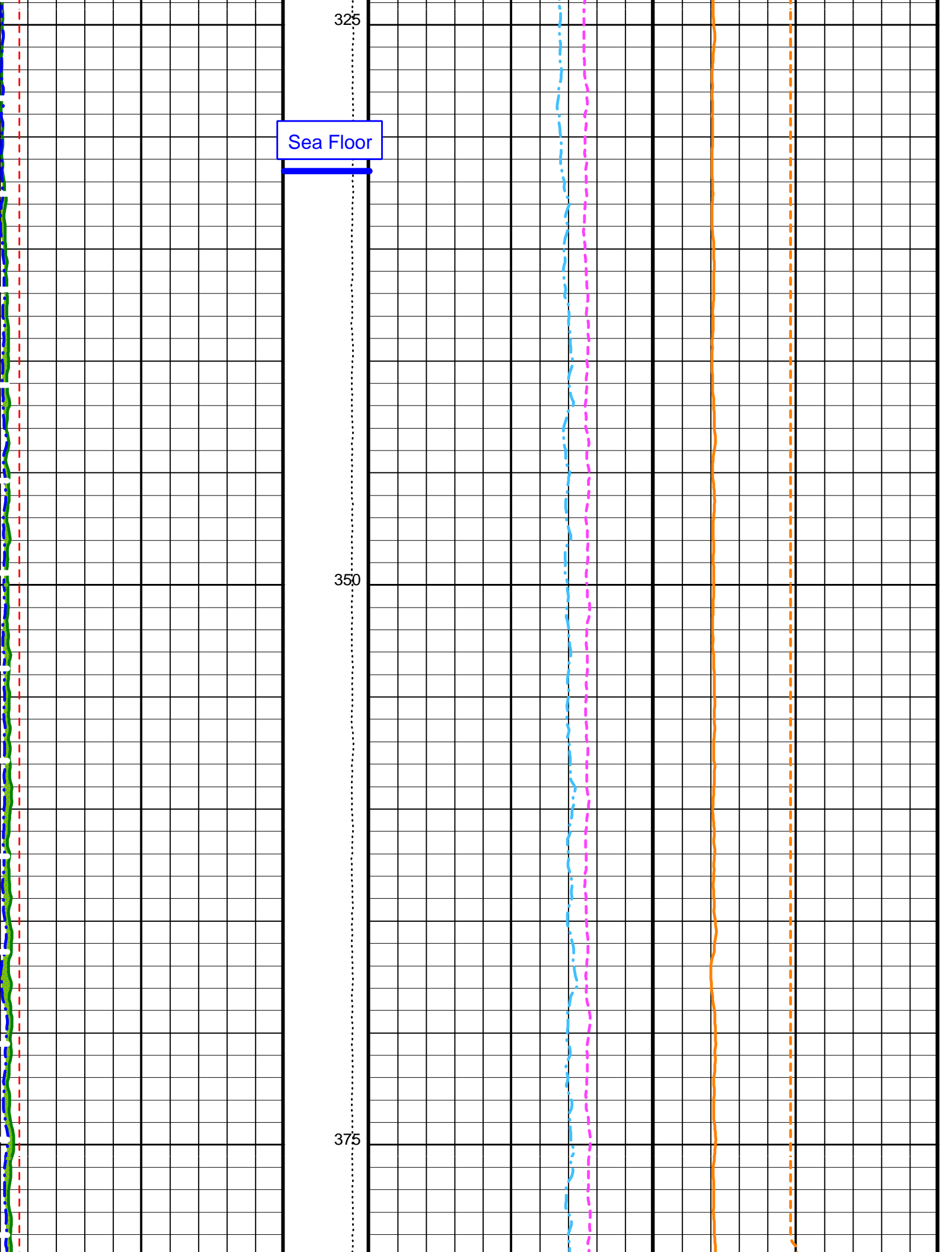
DLIS Name	New Value	Previous Value	Depth & Time
GCSE	BS	LCAL	442.1 23:15:10

PIP SUMMARY

Time Mark Every 60 S



Last Reading

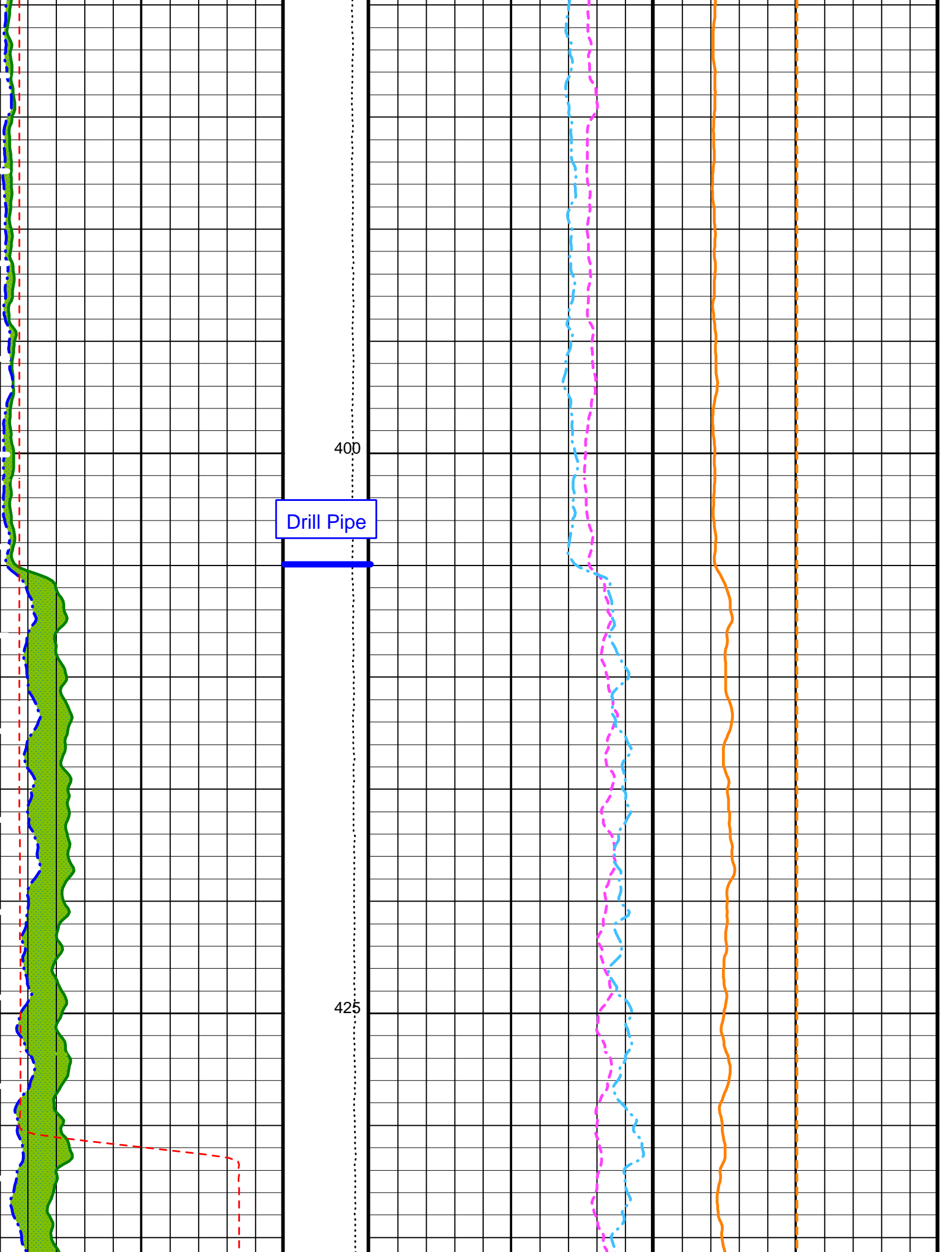


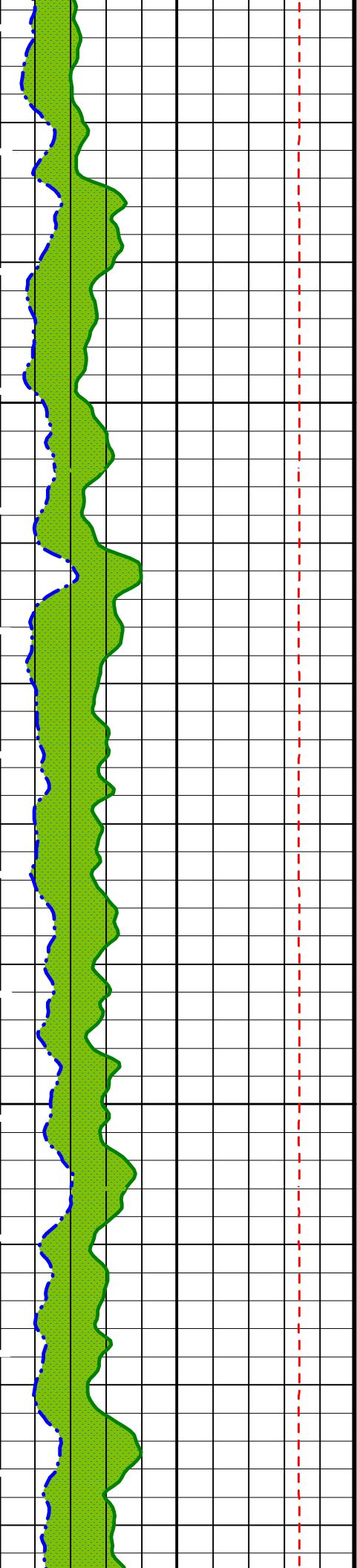
Sea Floor

325

350

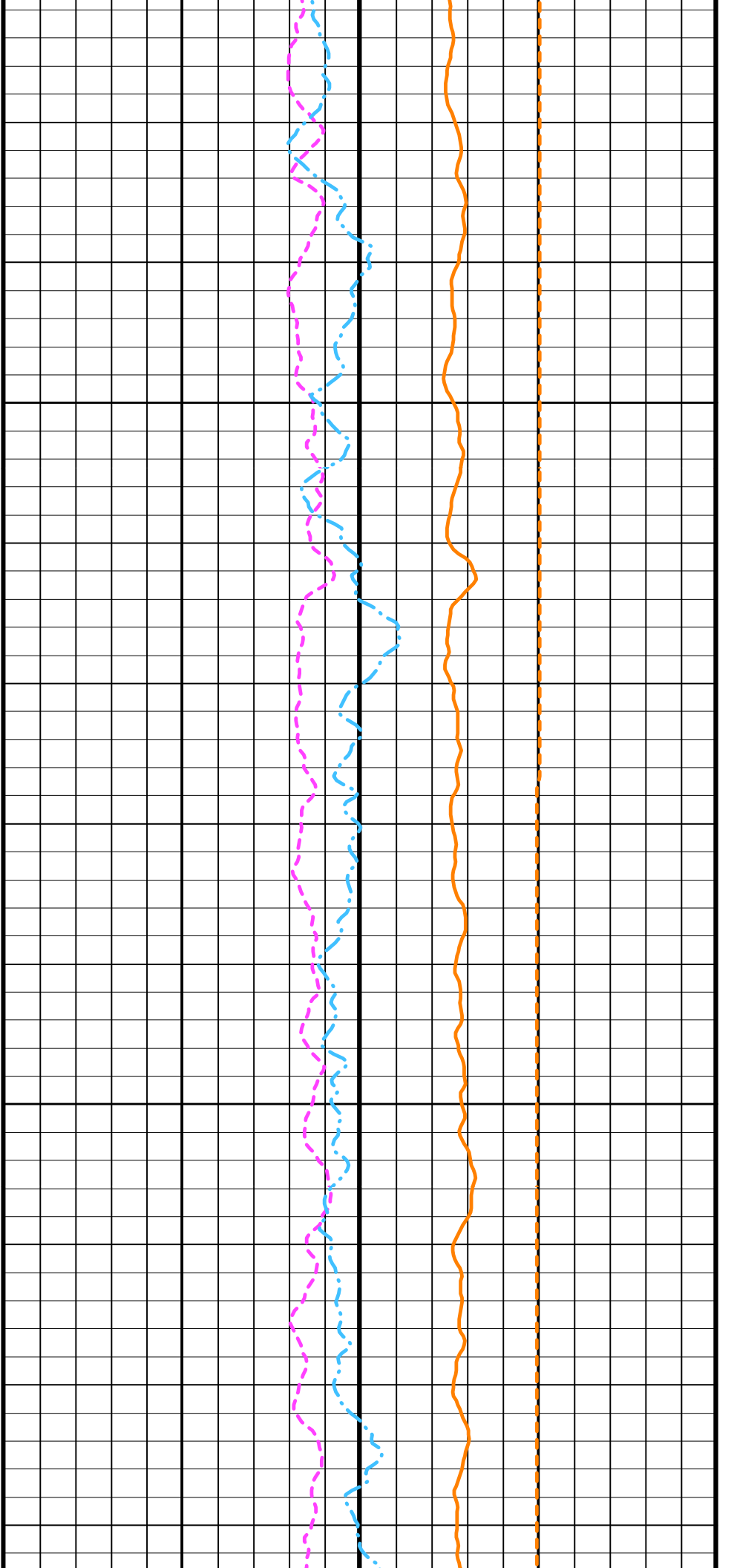
375

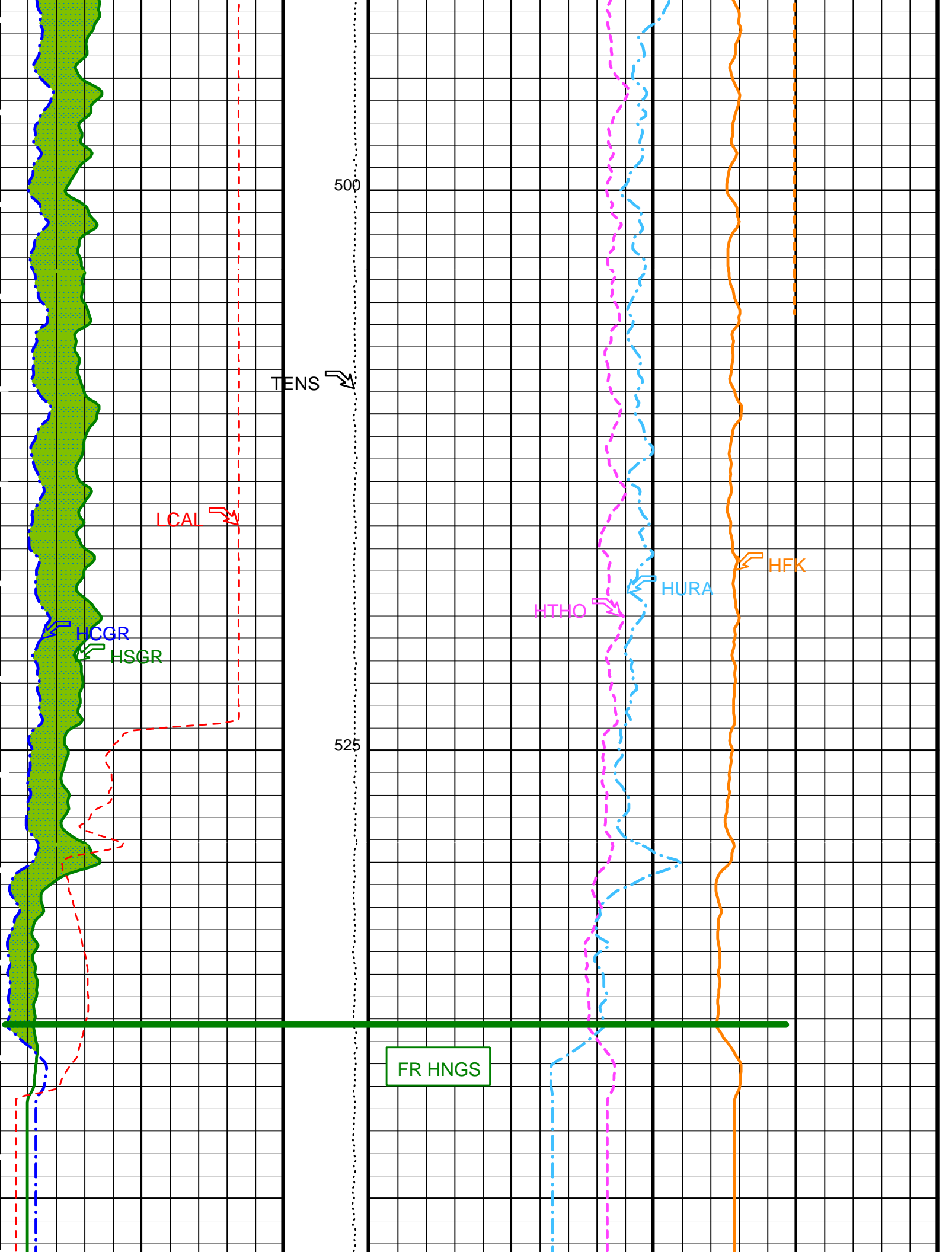


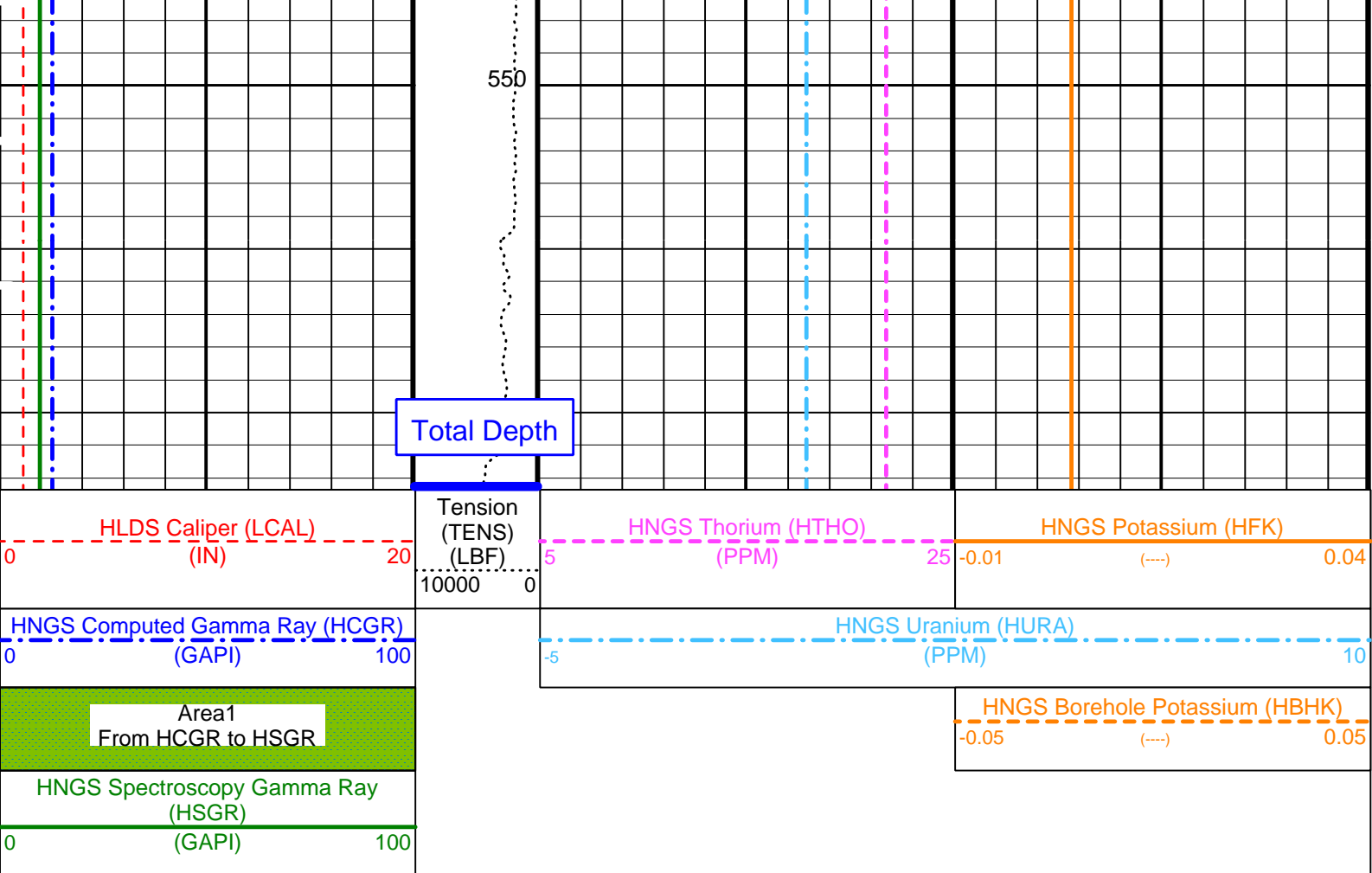


450

475







PIP SUMMARY

Time Mark Every 60 S

Parameters

DLIS Name	Description	Value	
BAR1	HNGS Detector 1 Barite Constant	1	
BAR2	HNGS Detector 2 Barite Constant	1	
BHK	HNGS Borehole Potassium Correction Concentration	0	
BHS	Borehole Status	OPEN	
BKSF	HNGS Borehole Fluid Excluder Sleeve Algorithm Factor	1	
BKSH	HNGS Borehole Fluid Excluder Sleeve Algorithm High Channel	245	
BKSL	HNGS Borehole Fluid Excluder Sleeve Algorithm Low Channel	17	
BS	Bit Size	9.875	IN
CSD1	Inner Casing Outer Diameter	0	IN
CSD2	Outer Casing Outer Diameter	0	IN
CSW1	Inner Casing Weight	0	LB/F
CSW2	Outer Casing Weight	0	LB/F
D1PR	HNGS Detector 1 Calibration Thorium Peak Resolution	7.79616	%
D1TC	HNGS Detector 1 Calibration Temperature	30.594	DEGC
D1TL	HNGS Detector 1 Calibration Thorium Peak Location	211.429	
D2PR	HNGS Detector 2 Calibration Thorium Peak Resolution	6.70686	%
D2TC	HNGS Detector 2 Calibration Temperature	29.6607	DEGC
D2TL	HNGS Detector 2 Calibration Thorium Peak Location	210.041	
DBCC	HNGS Barite Constant Correction Flag	NONE	
DFD	Drilling Fluid Density	1.10	G/C3
GCF1_START	HNGS Detector 1 GCF Constant	1	
GCF2_START	HNGS Detector 2 GCF Constant	1	
GCSE	Generalized Caliper Selection	LCAL	
H1P	HNGS Detector 1 Allow/Disallow In Processing	ALLOW	
H2P	HNGS Detector 2 Allow/Disallow In Processing	ALLOW	
HABK	HNGS Borehole Potassium Running Average	-0.00191565	
HALF	HNGS Alpha Filter Length	60	IN
HATIM	HNGS Marquardt Accumulation Time	600	S
HCRB	HNGS Apply Borehole Potassium Correction	NONE	
HMWM	Mud Weighting Material	NATU	
HNPE	HNGS Processing Enable	YES	
HSLV	HNGS Borehole Fluid Excluder Sleeve Status	NO	
HSVN	HNGS Spectral Standards Version Number	1.00913e-031	
MARQ_START	HNGS Marquardt Start-up Mode	INTERNAL	
RDF1_START	HNGS Detector 1 RDF Constant	0	
RDF2_START	HNGS Detector 2 RDF Constant	0	

RDF2_START	HNGS Detector 2 RDF Constant	0	
S1BI	HNGS Detector 1 Calibration Bismuth Count Rate	1.3	CPS
S1NA	HNGS Detector 1 Calibration Sodium Count Rate	22.4203	CPS
S1NG	HNGS Detector 1 Calibration End-On / Side-On Gain Ratio	0.992953	
S2BI	HNGS Detector 2 Calibration Bismuth Count Rate	1.3	CPS
S2NA	HNGS Detector 2 Calibration Sodium Count Rate	22.621	CPS
S2NG	HNGS Detector 2 Calibration End-On / Side-On Gain Ratio	0.985234	
SABK	HNGS Statistical Uncertainty in Borehole Potassium Running Average	0.000117223	
SGRC	HNGS Standard Gamma-Ray Correction Flag	YES	
TPOS	Tool Position	ECCE	
VBA1	HNGS Detector 1 Variable Barite Factor Running Average	1.03844	
VBA2	HNGS Detector 2 Variable Barite Factor Running Average	0.986994	

Format: HNGSYields Vertical Scale: 1:200 Graphics File Created: 10-Feb-2001 22:40

OP System Version: 9C1-303

MCM

DIT-E	OP91-kp2	DTA-A	OP91-kp2
HLDS	OP91-kp2	NPLC-B	OP91-kp2
APS-BA	OP91-kp2	HNGS-BA	OP91-kp2
DTC-H	OP91-kp2		

Output DLIS Files

DEFAULT	DITE .003	FN:3	PRODUCER	10-Feb-2001 22:39
TCOMBO_CUST	DITE .003	FN:4	PRODUCER	10-Feb-2001 22:39

COMPANY: Lamont Doherty

WELL: ODP Leg 194, Site 1198B

FIELD: Marion Plateau

Country: Australia

Ocean: Pacific Ocean

BOTTOM LOG INTERVAL	560 m
SCHLUMBERGER DEPTH	562.5 m
DEPTH DRILLER	853.1 m
KELLY BUSHING	11.3 m
DRILL FLOOR	11 m
GROUND LEVEL	-330.5 m



Phasor Induction-Natural Gamma Ray