

Orientation North

Orientation North

C2 .CRC [POTA .WEL
8 (in) 16	0 (%) 5

0 120 240 360

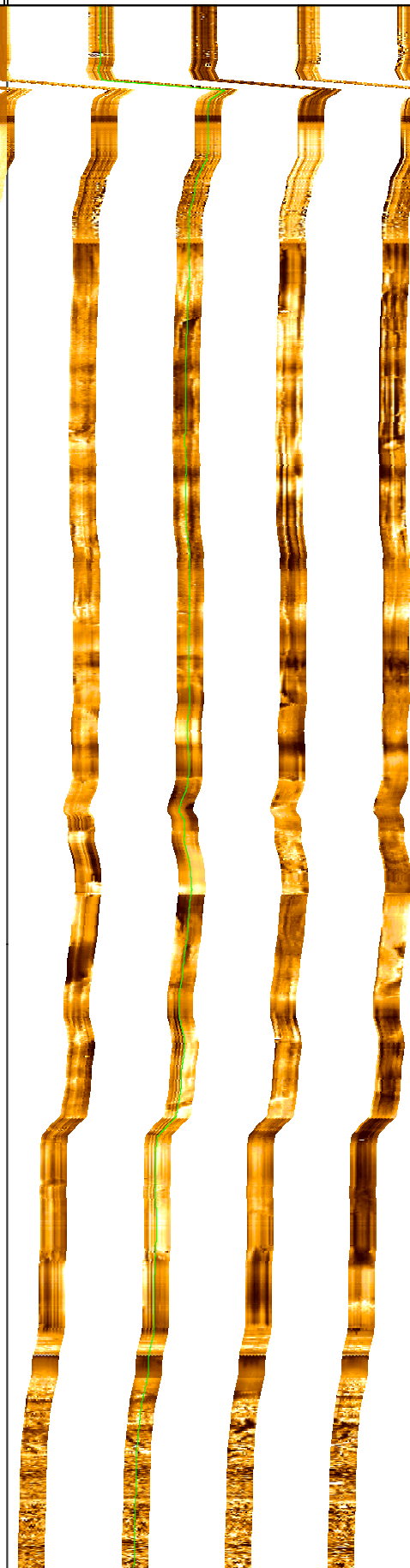
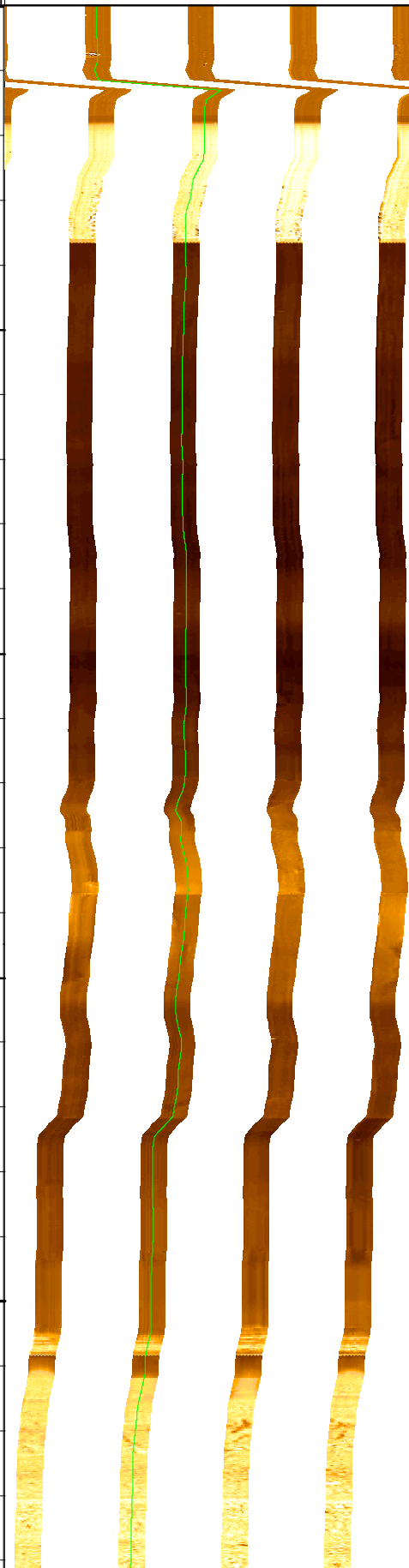
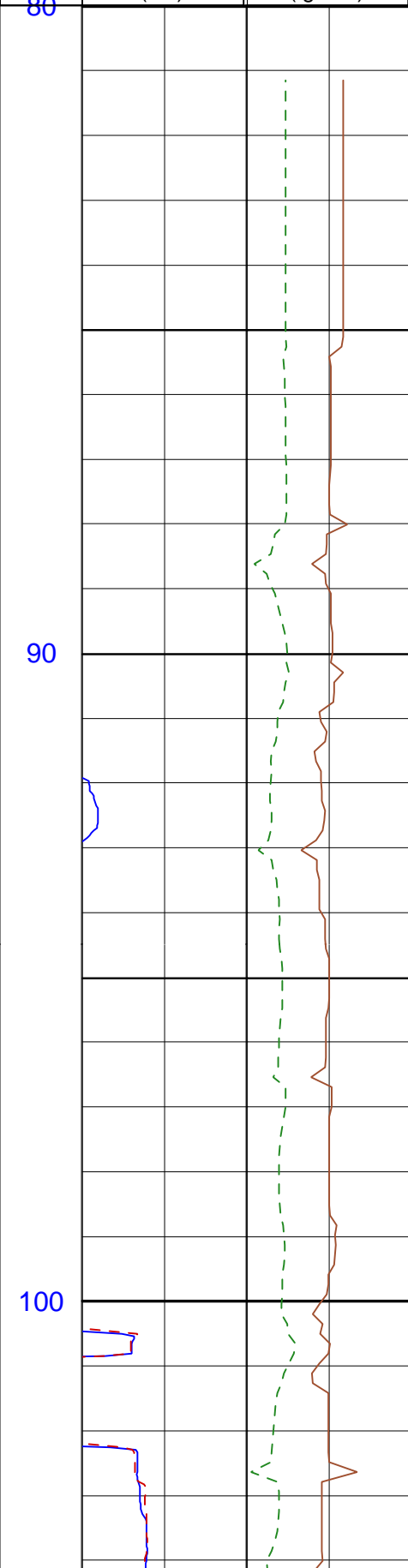
0 120 240 360

MD
1 : 100
m
80

C1 .CRC [SGR .WELL
8 (in) 16	0 (gAPI) 50

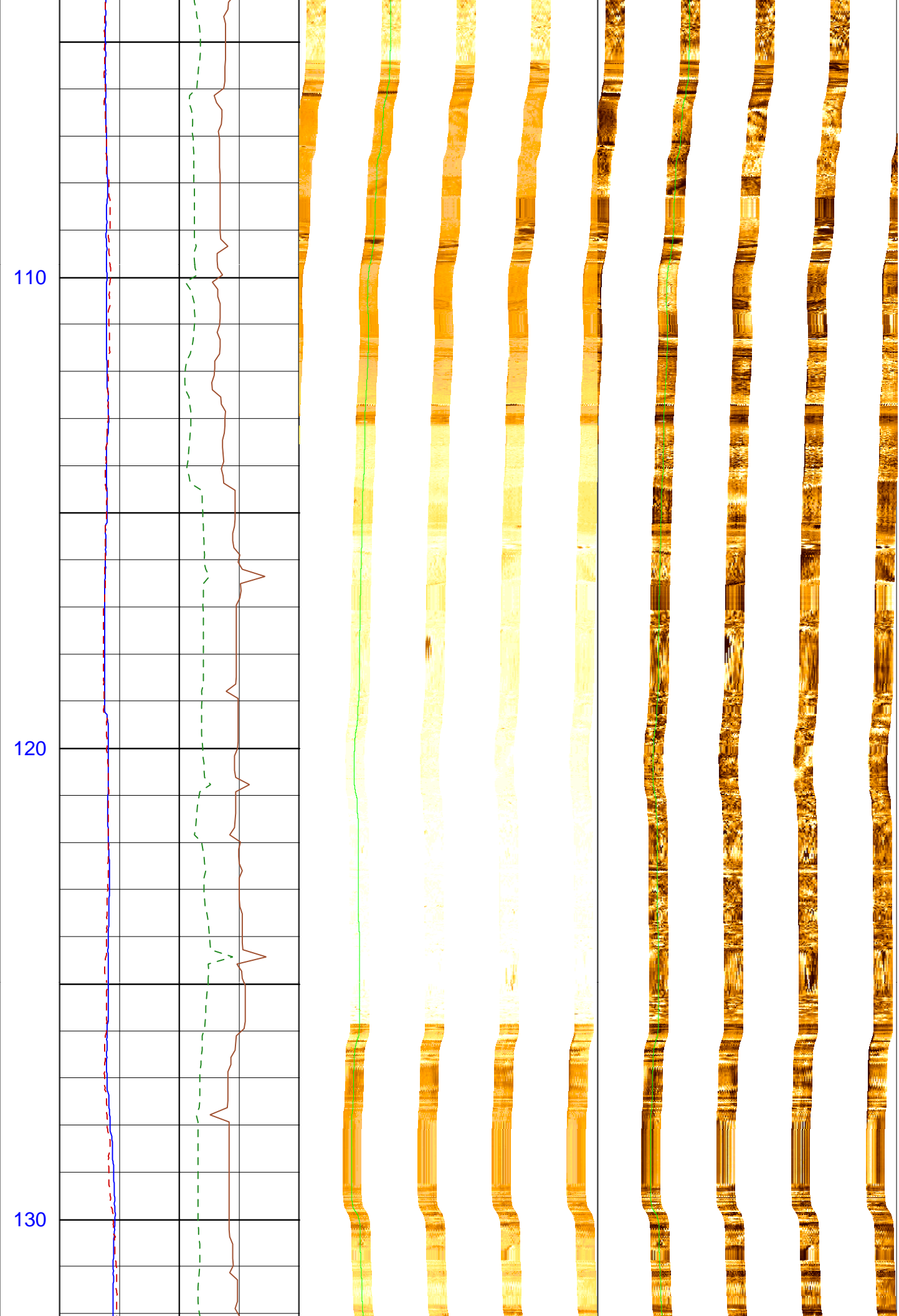
Resistive FMS4 Image Conductive

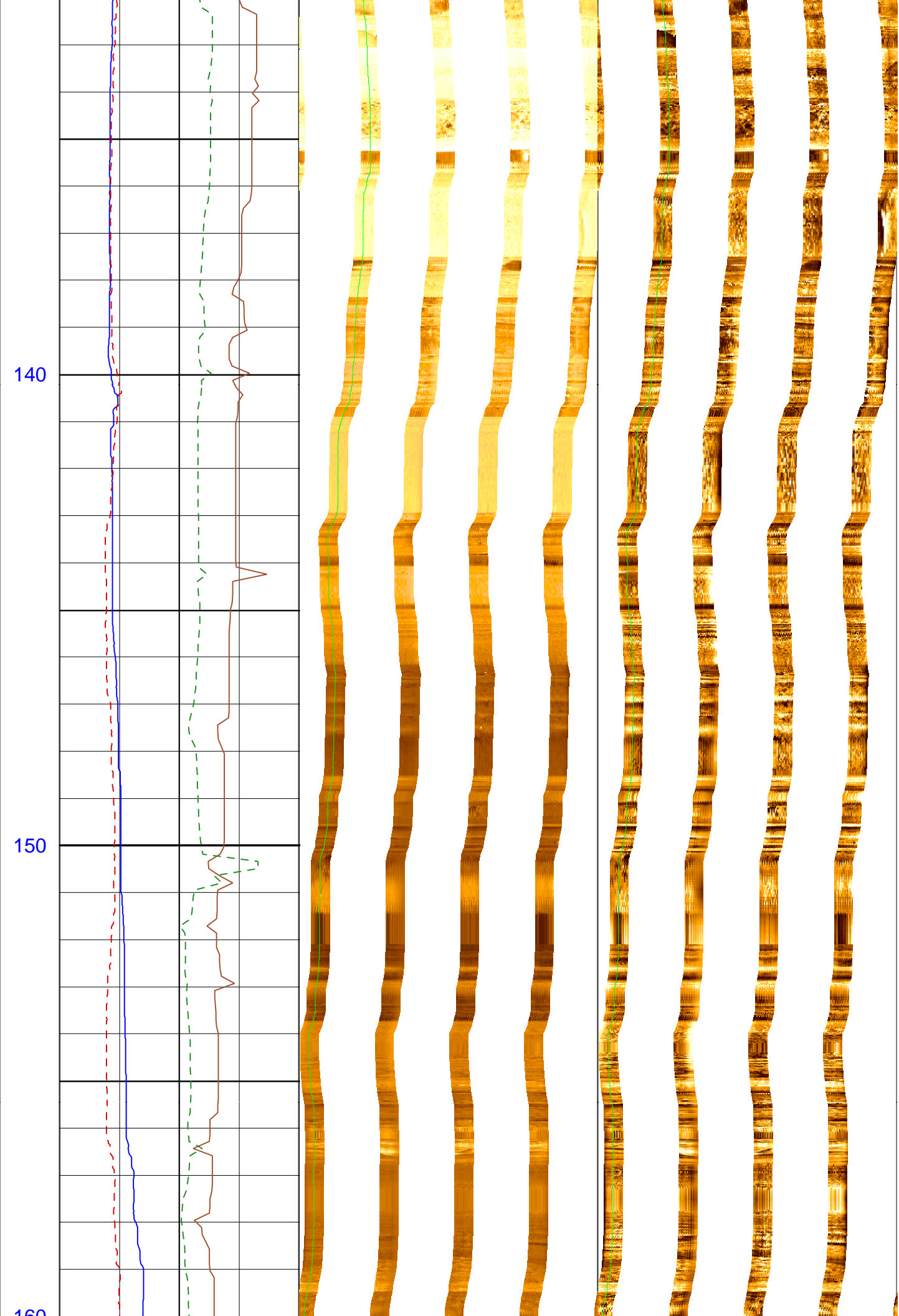
Resistive FMS4 Image Conductive

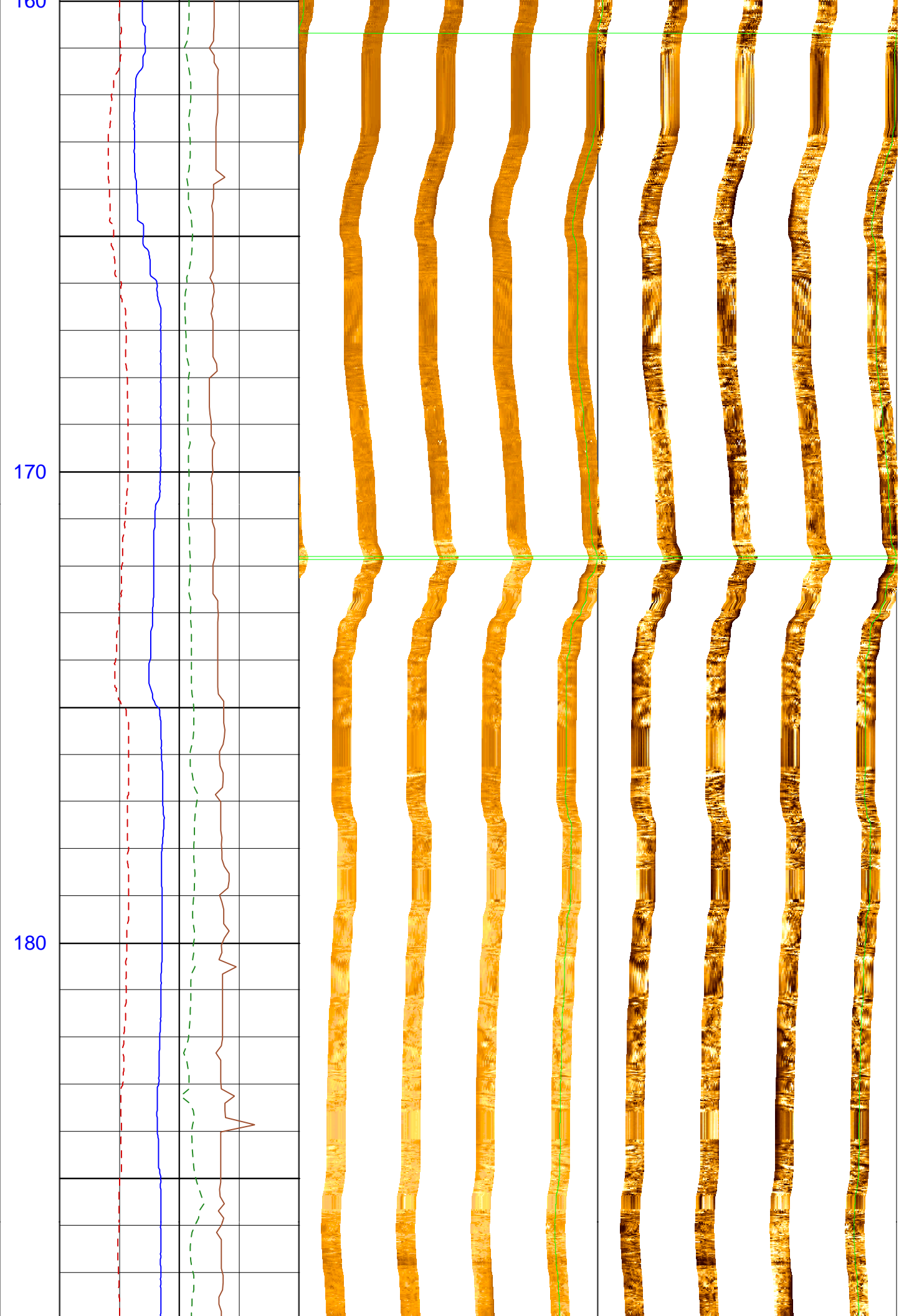


90

100



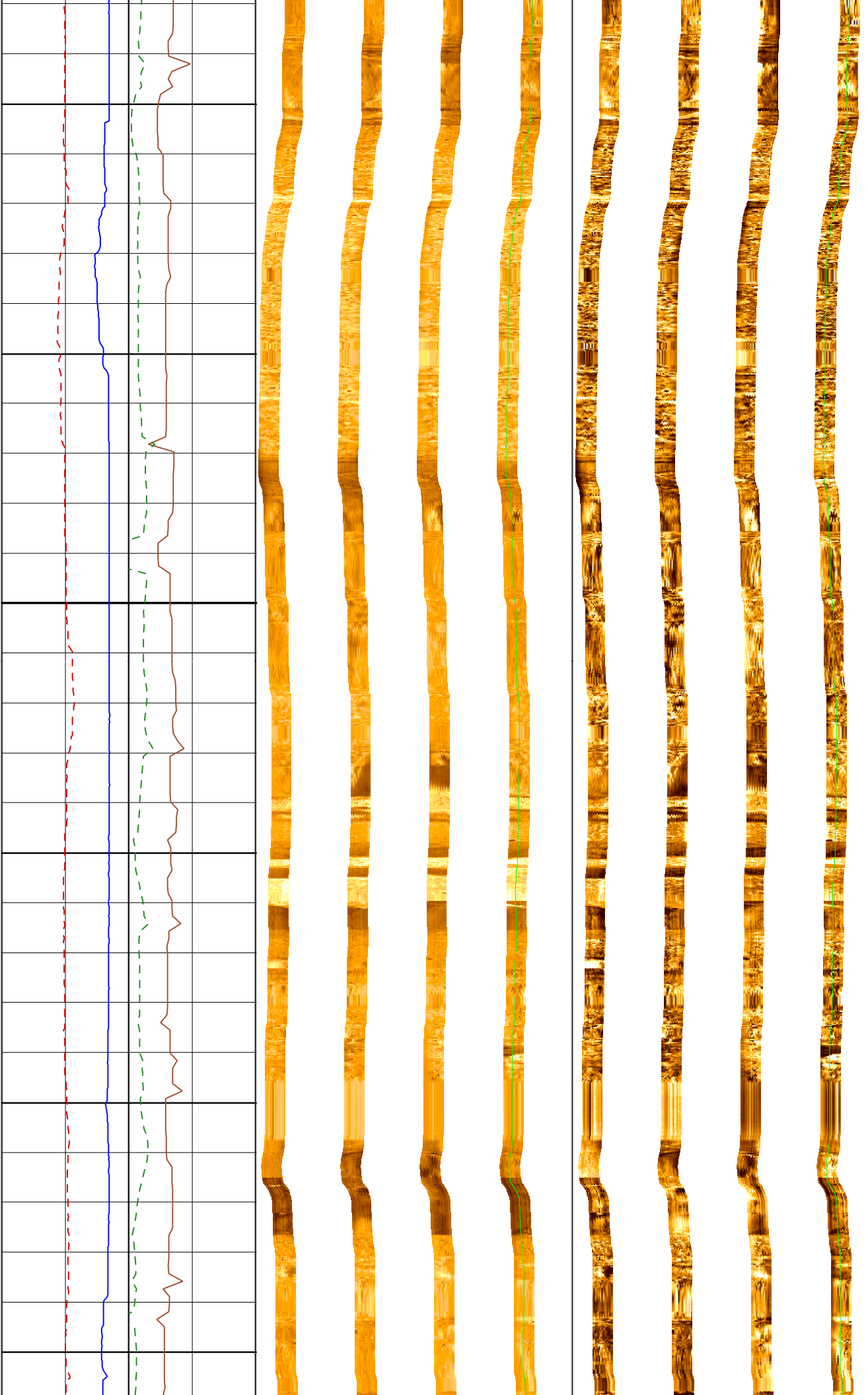


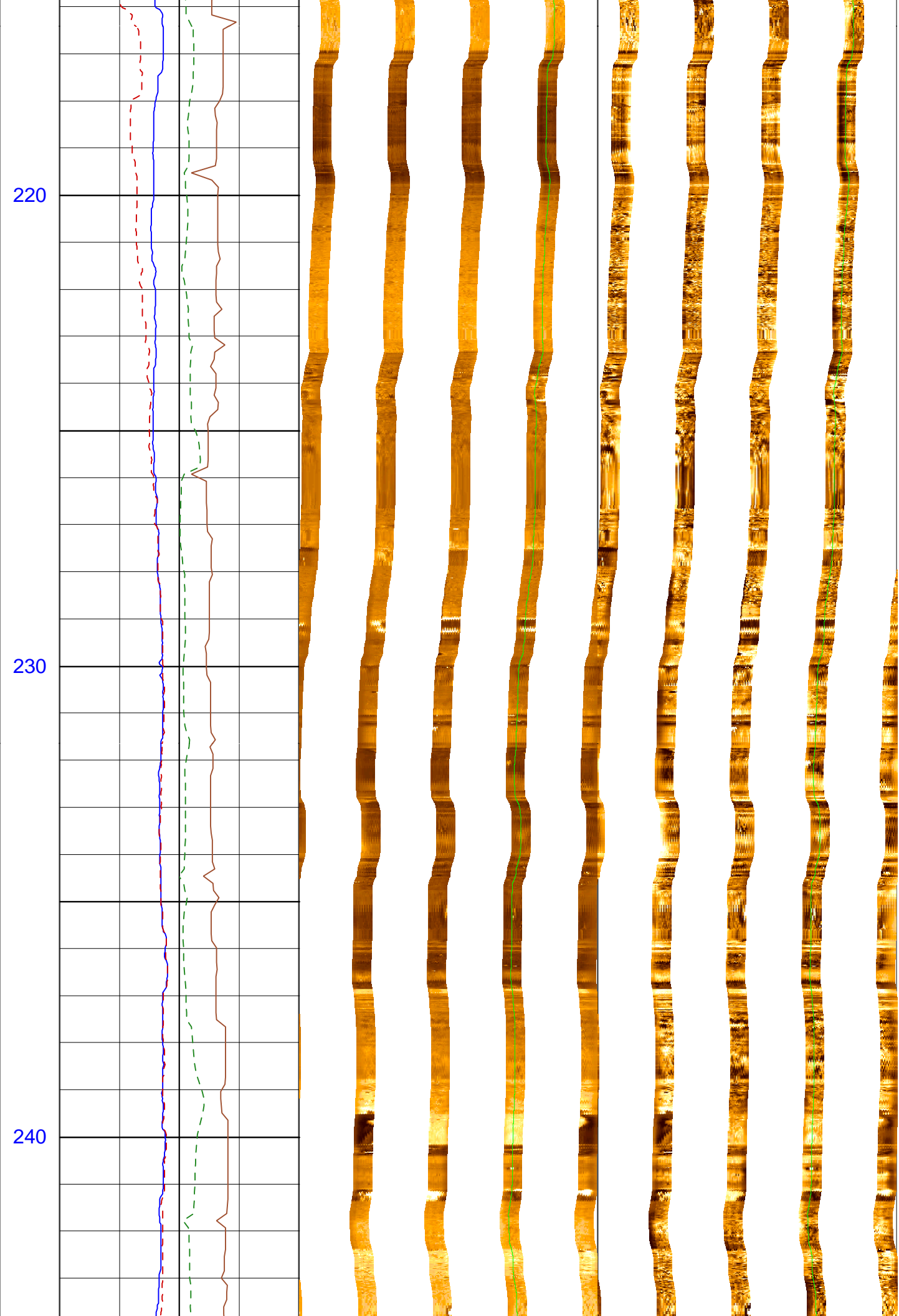


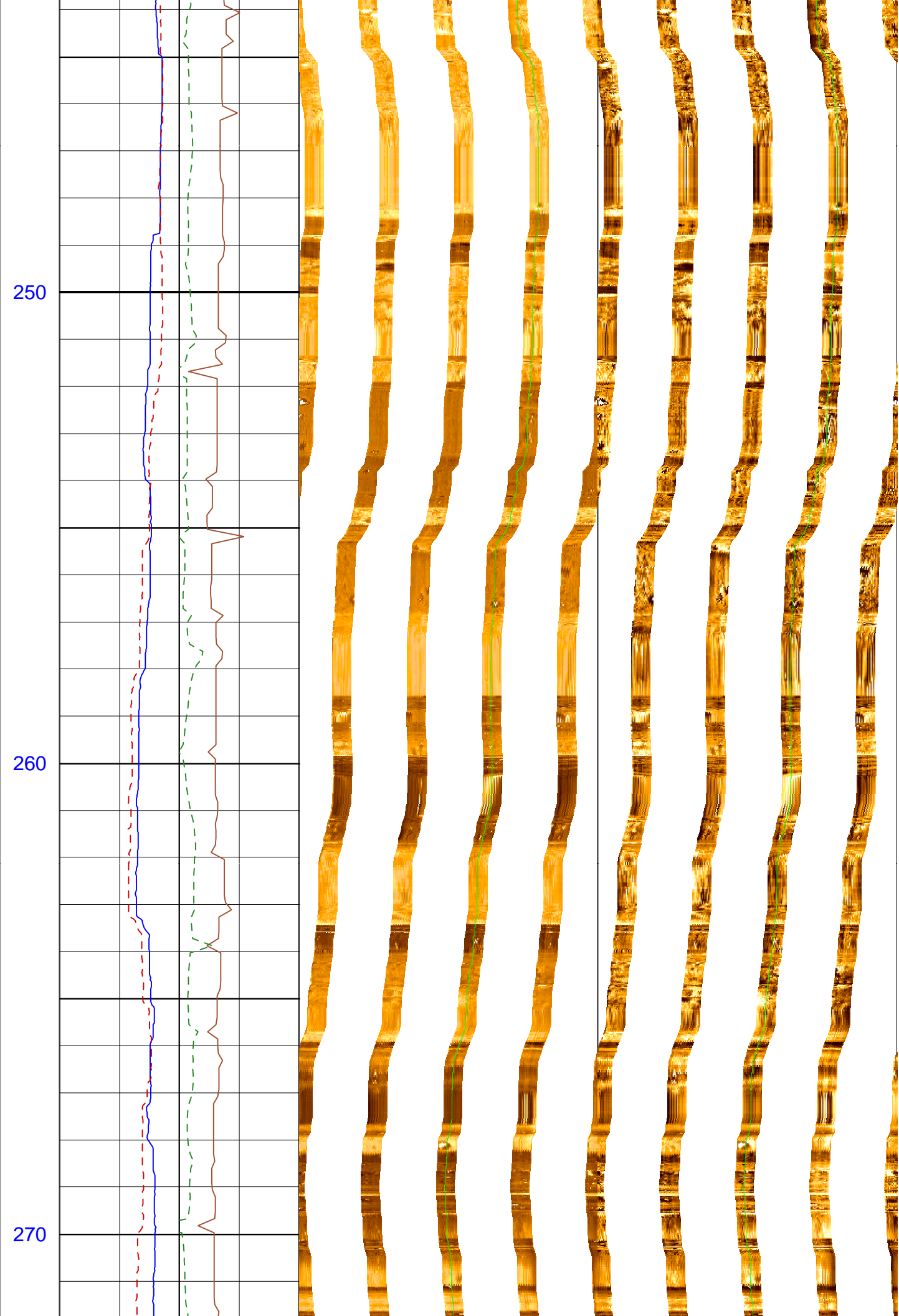
190

200

210

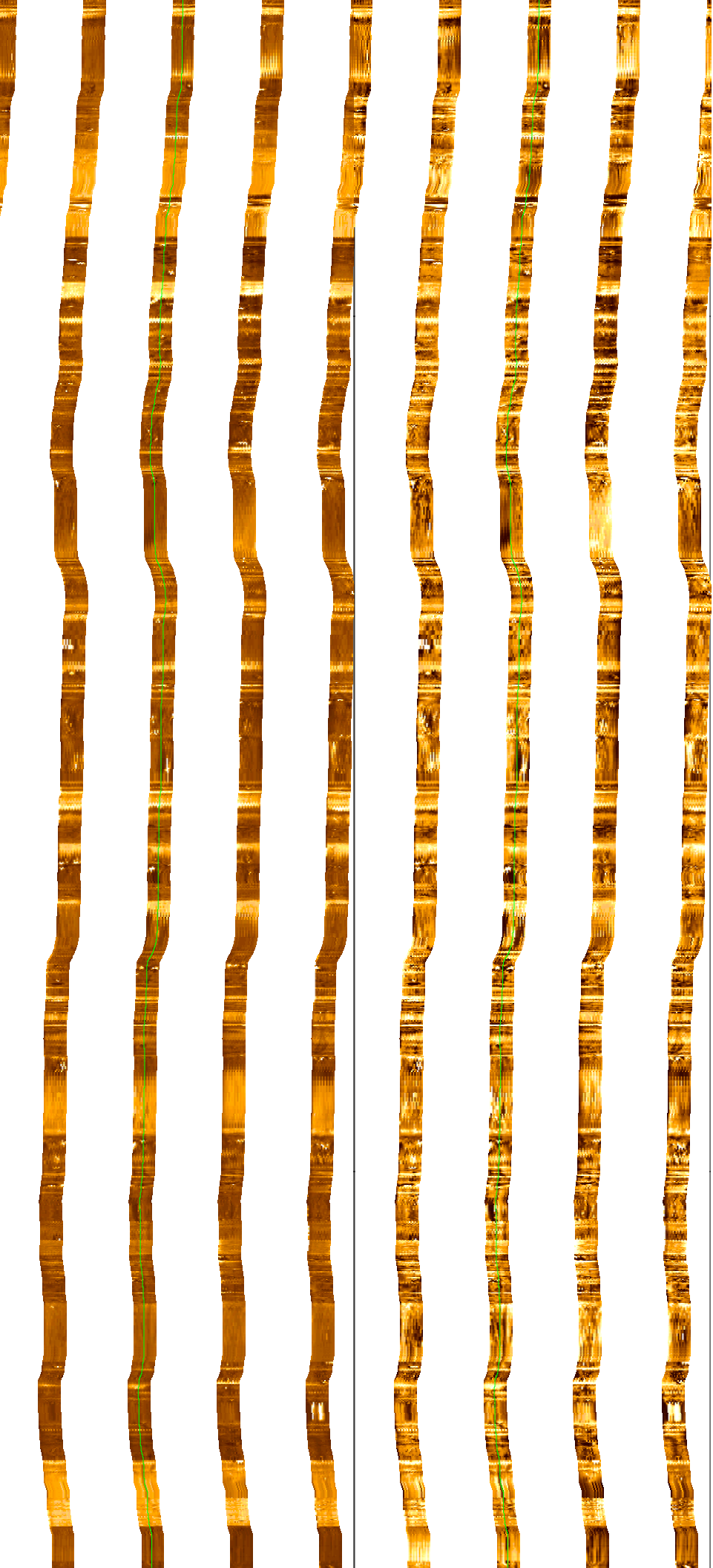
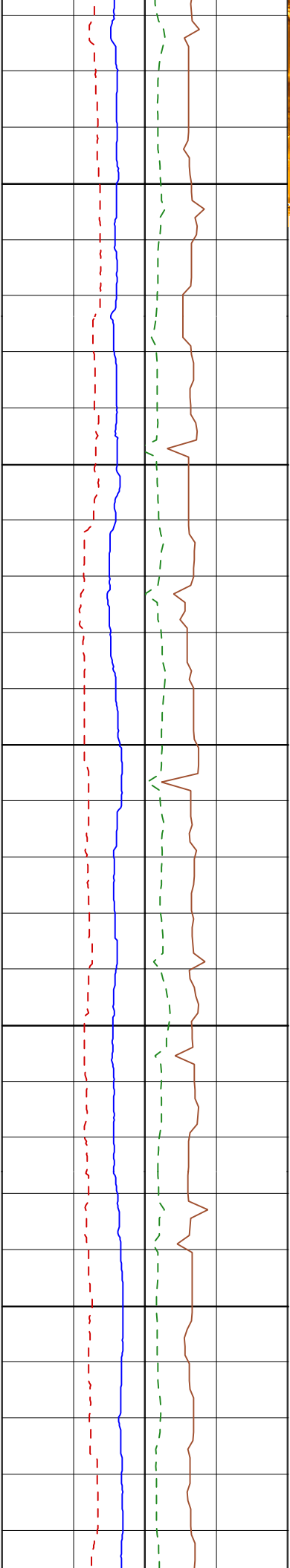


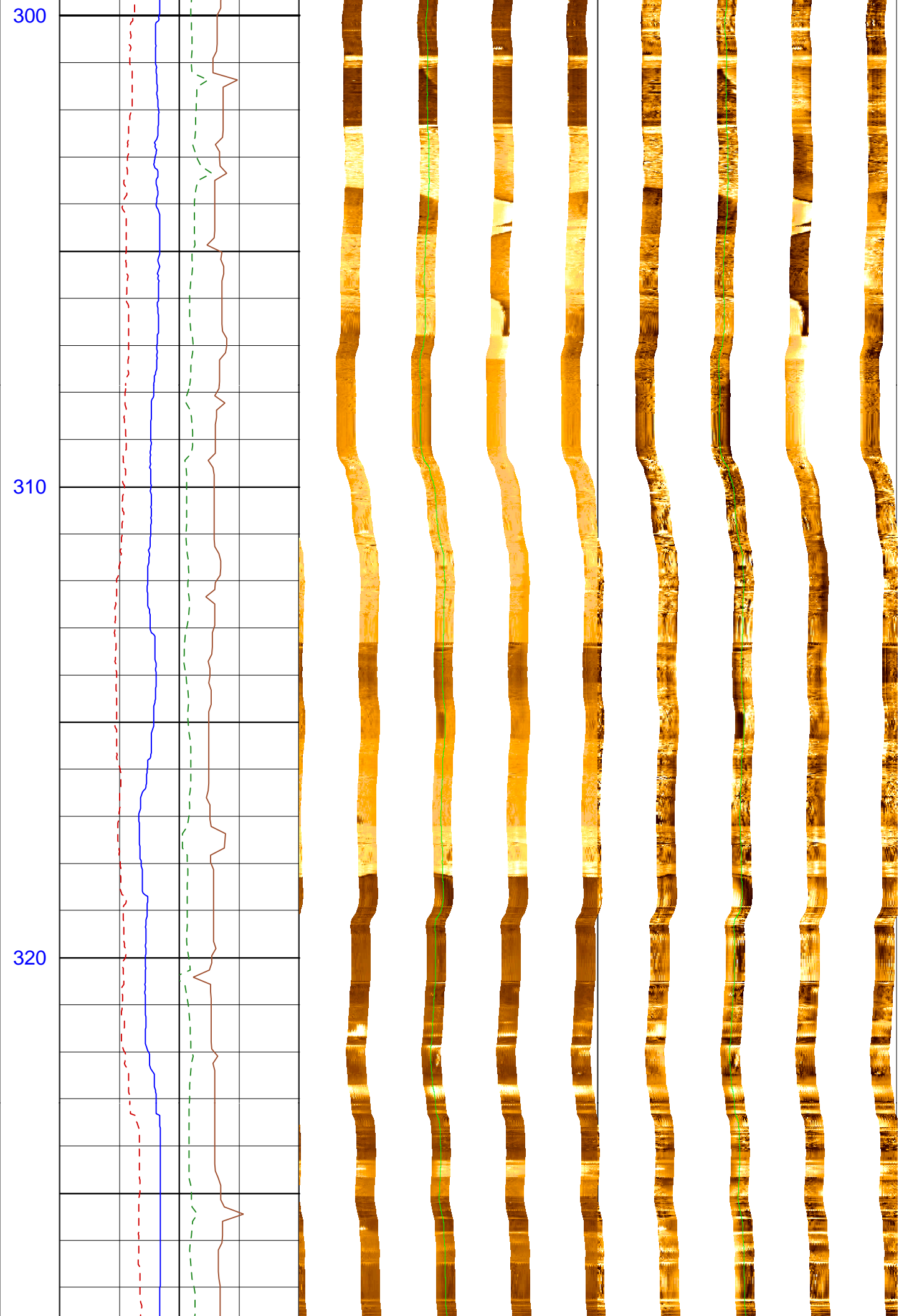




280

290

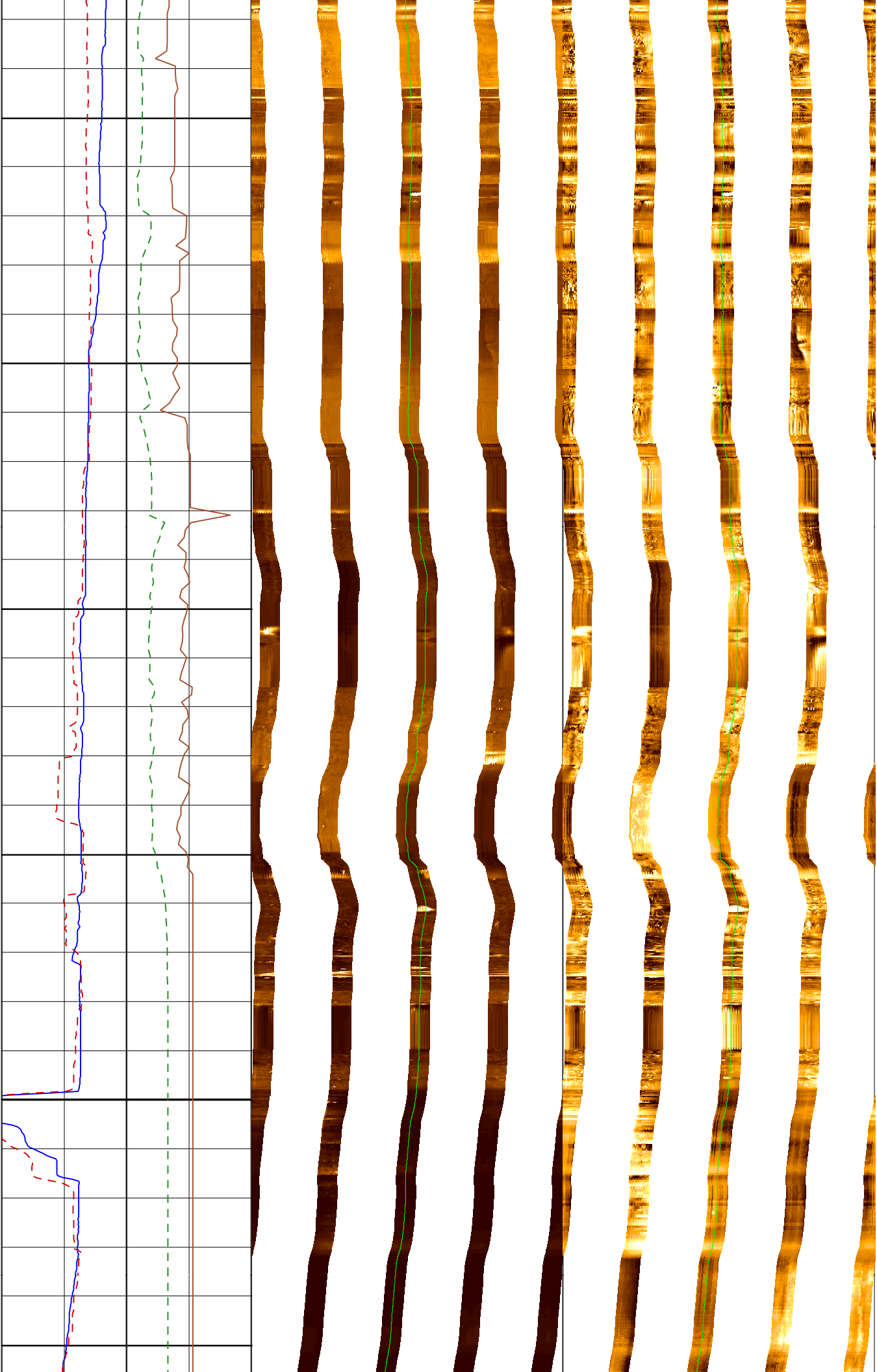




330

340

350



360

MD
1 : 100
m

C1 .CRC [
8 (in) 16

C2 .CRC [
8 (in) 16

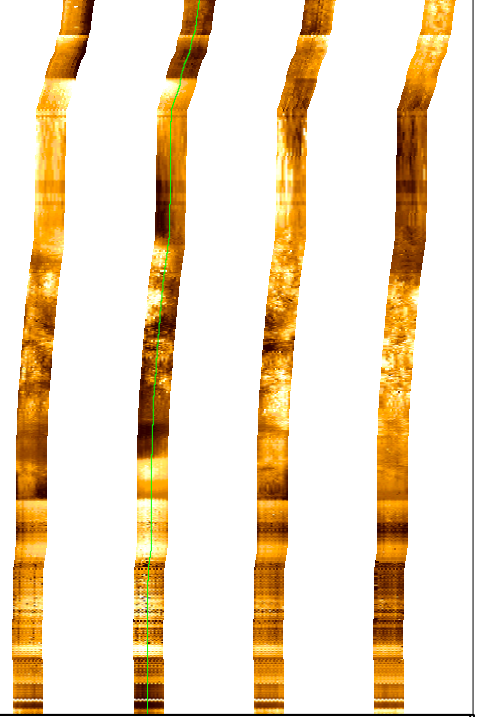
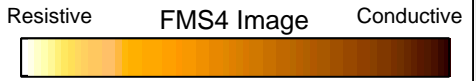
SGR .WELS
0 (gAPI) 50

POTA .WEL
0 (%) 5



SONIC_NGS_044LUP FMS4 .STAT
Horizontal Scale: 1 : 12.409
Orientation North

0 120 240 360



SONIC_NGS_044LUP FMS4 .DYNA [C25
Horizontal Scale: 1 : 12.409
Orientation North

0 120 240 360

