

COMPANY: Lamont Doherty

WELL: ODP Leg 198, Site 1207-B

FIELD: Shatsky Rise

Country: Japan Ocean: Pacific Ocean



GHMT/NGTC

Country: Japan
Field: Shatsky Rise
Location: Rig- Joides Resolution
Well: ODP Leg 198, Site 1207-B
Company: Lamont Doherty

LOCATION		Rig- Joides Resolution	Elev.: K.B. 11.3 m G.L. -3111.7 m D.F. 11 m
Permanent Datum:	GROUND LEVEL	Elev.: _____	above Perm. Datum
Log Measured From:	DES		
Drilling Measured From:	DES		
API Serial No.	Max. Hole Devi.	Longitude E 162.7558	Latitude N 37.782

Logging Date	9-13-01		
Run Number	1		
Depth Driller	3734.5 m		
Schlumberger Depth	3479.3 m		
Bottom Log Interval	3478 m		
Top Log Interval	3212.4 m		
Casing Driller Size @ Depth	0.000 in @ 3226 m		
Casing Schlumberger	3227 m		
Bit Size	9.875 in		
Type Fluid In Hole			
Density	1.1 g/cm3		
Fluid Loss	PH		
Source Of Sample			
RM @ Measured Temperature	@	@	@
RMF @ Measured Temperature	@	@	@
RMC @ Measured Temperature	@	@	@
Source RMF	RMC		
RM @ MRT	RMF @ MRT	@	@
Maximum Recorded Temperatures			
Circulation Stopped	Time 9-12-01	1300	
Logger On Bottom	Time 0	See Log	
Unit Number	99	Houston	
Recorded By	Steve Kittredge		
Witnessed By	Trevor Williams		

Logging Date	9-13-01		
Run Number	1		
Depth Driller	3734.5 m		
Schlumberger Depth	3479.3 m		
Bottom Log Interval	3478 m		
Top Log Interval	3212.4 m		
Casing Driller Size @ Depth	0.000 in @ 3226 m		
Casing Schlumberger	3227 m		
Bit Size	9.875 in		
Type Fluid In Hole			
Density	1.1 g/cm3		
Fluid Loss	PH		
Source Of Sample			
RM @ Measured Temperature	@	@	@
RMF @ Measured Temperature	@	@	@
RMC @ Measured Temperature	@	@	@
Source RMF	RMC		
RM @ MRT	RMF @ MRT	@	@
Maximum Recorded Temperatures			
Circulation Stopped	Time 9-12-01	1300	
Logger On Bottom	Time 0	See Log	
Unit Number	99	Houston	
Recorded By	Steve Kittredge		
Witnessed By	Trevor Williams		

Logging Date	9-13-01		
Run Number	1		
Depth Driller	3734.5 m		
Schlumberger Depth	3479.3 m		
Bottom Log Interval	3478 m		
Top Log Interval	3212.4 m		
Casing Driller Size @ Depth	0.000 in @ 3226 m		
Casing Schlumberger	3227 m		
Bit Size	9.875 in		
Type Fluid In Hole			
Density	1.1 g/cm3		
Fluid Loss	PH		
Source Of Sample			
RM @ Measured Temperature	@	@	@
RMF @ Measured Temperature	@	@	@
RMC @ Measured Temperature	@	@	@
Source RMF	RMC		
RM @ MRT	RMF @ MRT	@	@
Maximum Recorded Temperatures			
Circulation Stopped	Time 9-12-01	1300	
Logger On Bottom	Time 0	See Log	
Unit Number	99	Houston	
Recorded By	Steve Kittredge		
Witnessed By	Trevor Williams		

DISCLAIMER



THE USE OF AND RELIANCE UPON THIS RECORDED-DATA BY THE HEREIN NAMED COMPANY (AND ANY OF ITS AFFILIATES, PARTNERS, REPRESENTATIVES, AGENTS, CONSULTANTS AND EMPLOYEES) IS SUBJECT TO THE TERMS AND CONDITIONS AGREED UPON BETWEEN SCHLUMBERGER AND THE COMPANY, INCLUDING: (a) RESTRICTIONS ON USE OF THE RECORDED-DATA; (b) DISCLAIMERS AND WAIVERS OF WARRANTIES AND REPRESENTATIONS REGARDING COMPANY'S USE OF AND RELIANCE UPON THE RECORDED-DATA; AND (c) CUSTOMER'S FULL AND SOLE RESPONSIBILITY FOR ANY INFERENCE DRAWN OR DECISION MADE IN CONNECTION WITH THE USE OF THIS RECORDED-DATA.

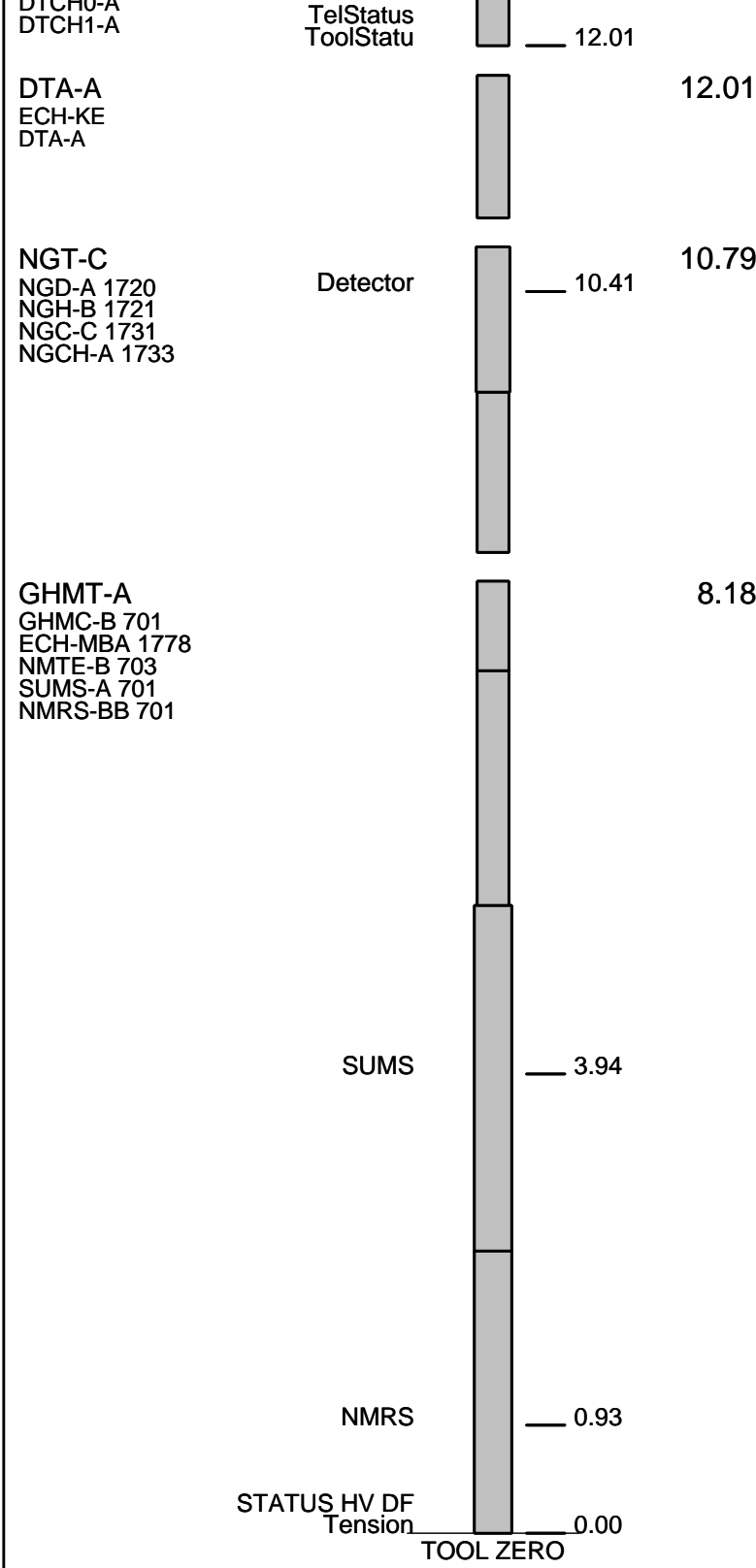
OTHER SERVICES1 OS1: MESTB/DSI OS2: DITE/HLDS/APS/HNGS OS3: OS4: OS5:	OTHER SERVICES2 OS1: OS2: OS3: OS4: OS5:
--	---

REMARKS: RUN NUMBER 1 High density weight used to add weight to the tool. WHC Used on this run. Seas calm. Log Measured in Meters Below Rig Floor (MBRF). Total Depth Driller- 3734.5 MBRF. Sea Floor Driller- 3111.7 MBRF. Total Depth Logger- 3479.3 MBRF. Sea Floor Logger- 3111 MBRF. Drill Pipe Logger- 3222 MBRF. Two passes were made. Toolstring- GHMT/NGTC/DTA/DTC/Weight. Could not get to total Depth due to obstruction.	REMARKS: RUN NUMBER 2
--	-----------------------

RUN 1			RUN 2		
SERVICE ORDER #:			SERVICE ORDER #:		
PROGRAM VERSION:		9C2-303	PROGRAM VERSION:		
FLUID LEVEL:			FLUID LEVEL:		
LOGGED INTERVAL	START	STOP	LOGGED INTERVAL	START	STOP

EQUIPMENT DESCRIPTION

RUN 1		RUN 2	
SURFACE EQUIPMENT			
GSR-U WITM (DTS)-A			
DOWNHOLE EQUIPMENT			
LEH-QT LEH-QT		13.81	
DTC-H ECH-KC PTCH-A	CTEM 	12.65	12.93



MAXIMUM STRING DIAMETER 4.00 IN
 MEASUREMENTS RELATIVE TO TOOL ZERO
 ALL LENGTHS IN METERS

Input DLIS Files

DEFAULT GHMT_NGS_023LUP FN:17 PRODUCER 13-Sep-2001 13:47 3467.7 M 3214.7 M

Output DLIS Files

DEFAULT GHMT_NGS_029PUP FN:26 PRODUCER 14-Sep-2001 16:27 3467.7 M 3215.2 M

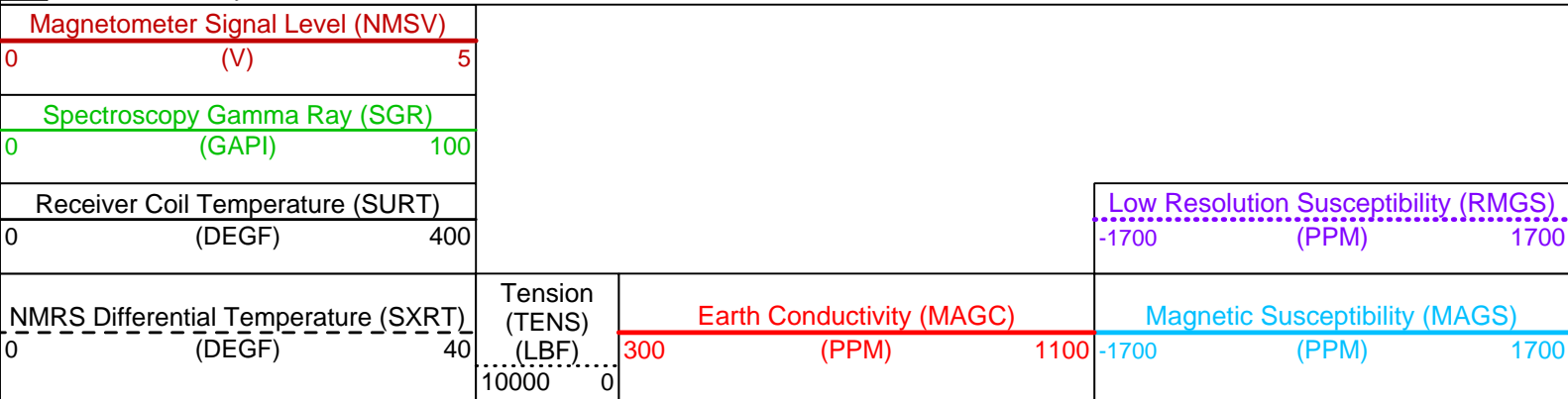
OP System Version: 9C2-303
MCM

MAIN UP LOG

GHMT-A 9C2-303 NGT-C 9C2-303
DTA-A 9C2-303 DTC-H 9C2-303

PIP SUMMARY

▶ Time Mark Every 60 S



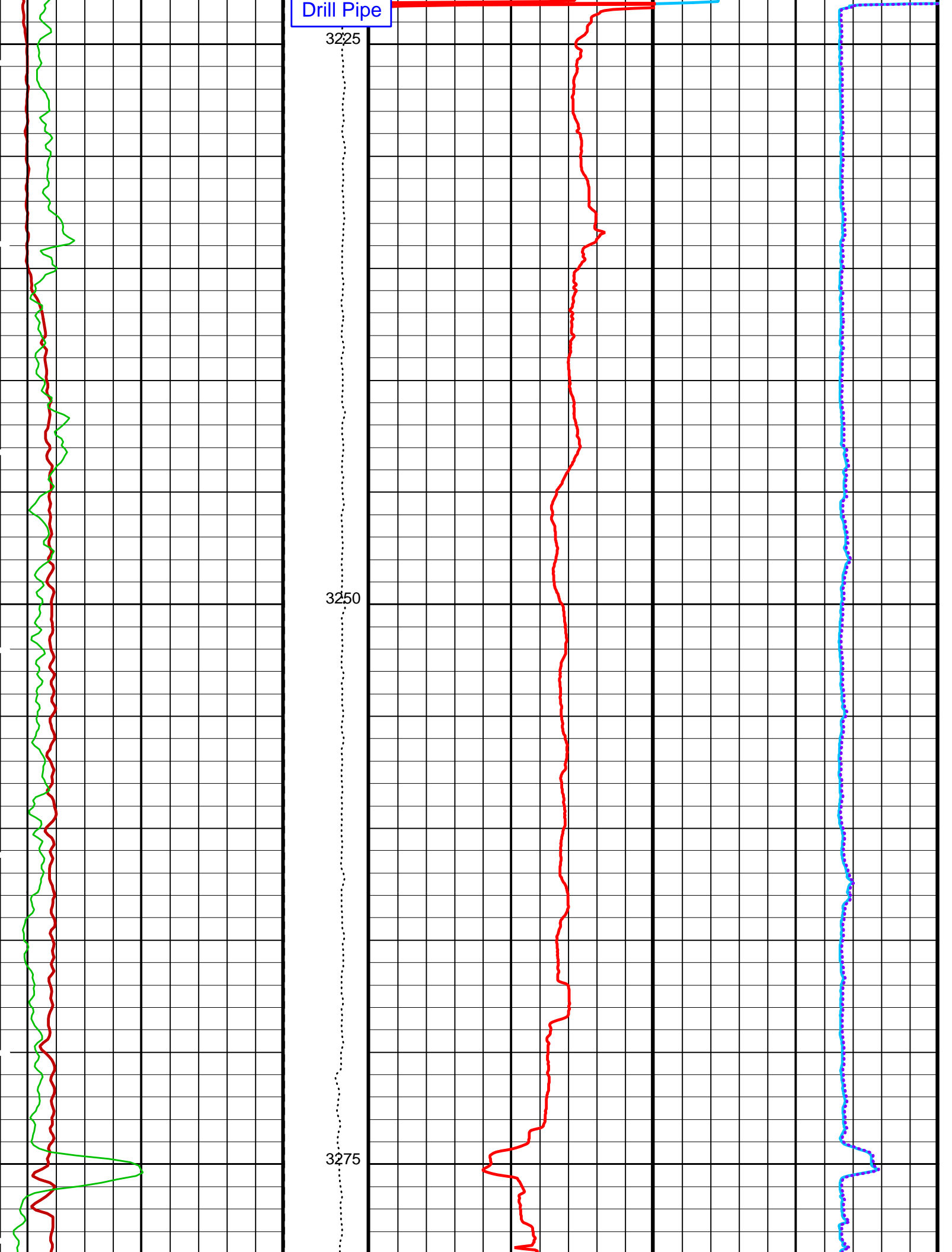
Last Reading

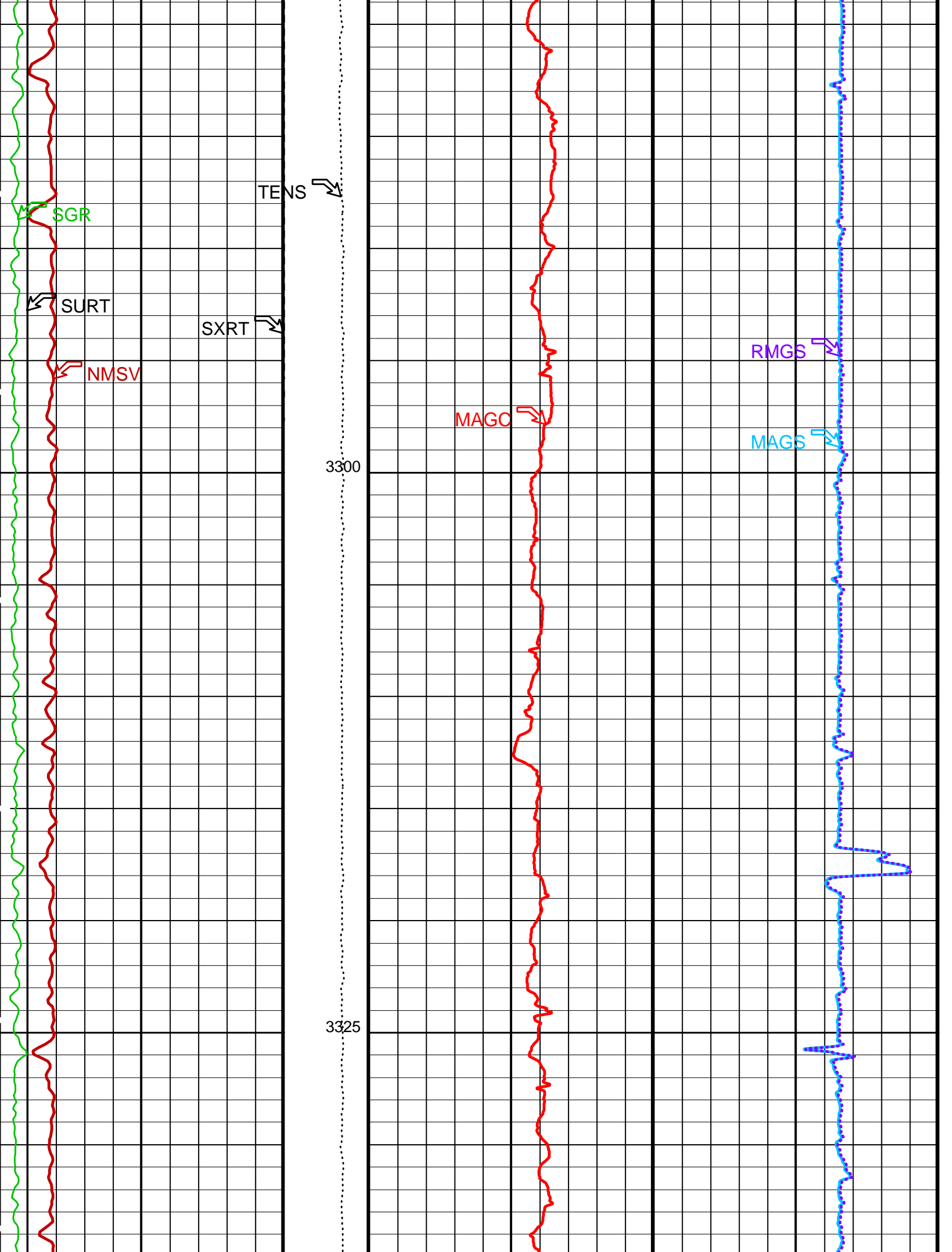
Drill Pipe

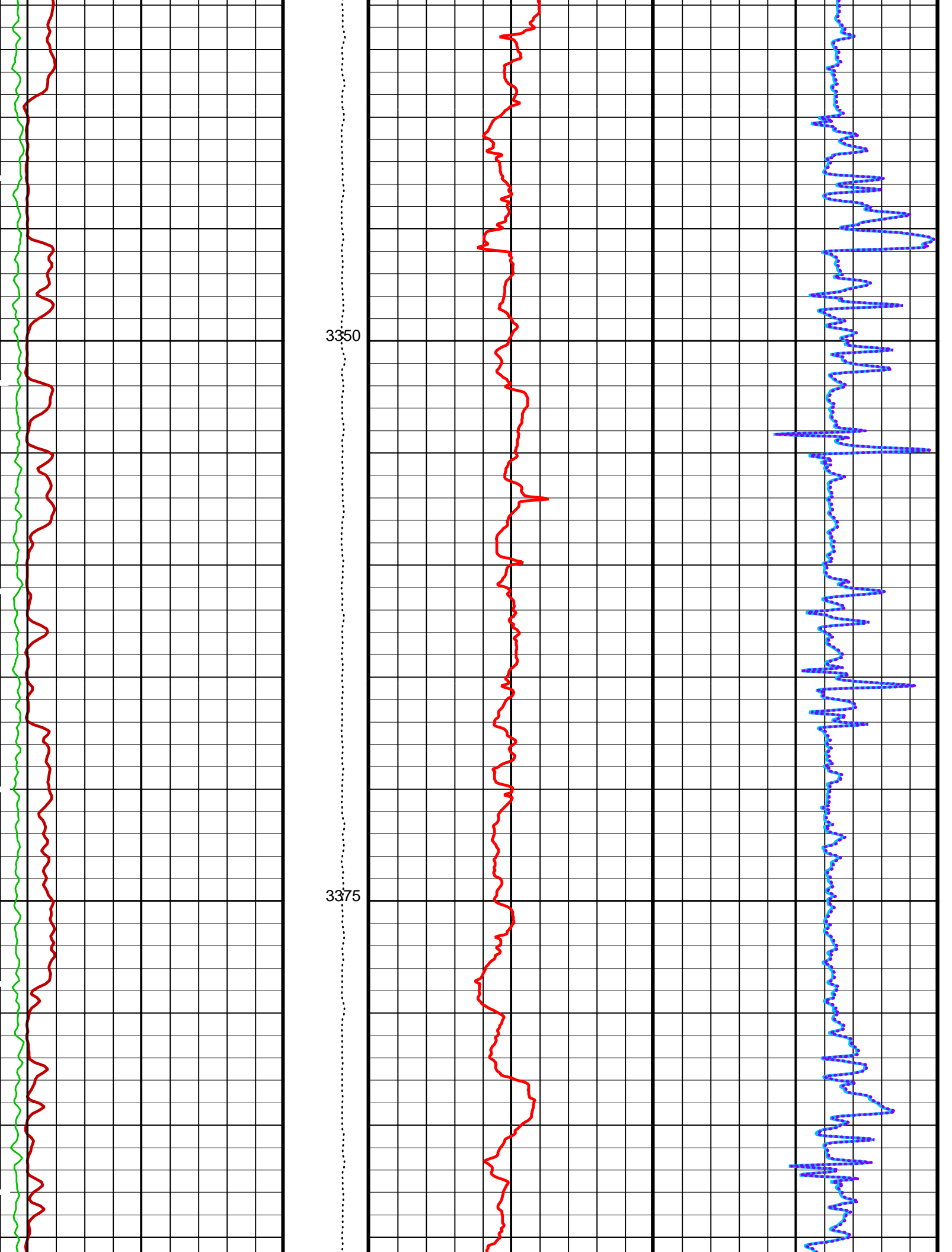
3225

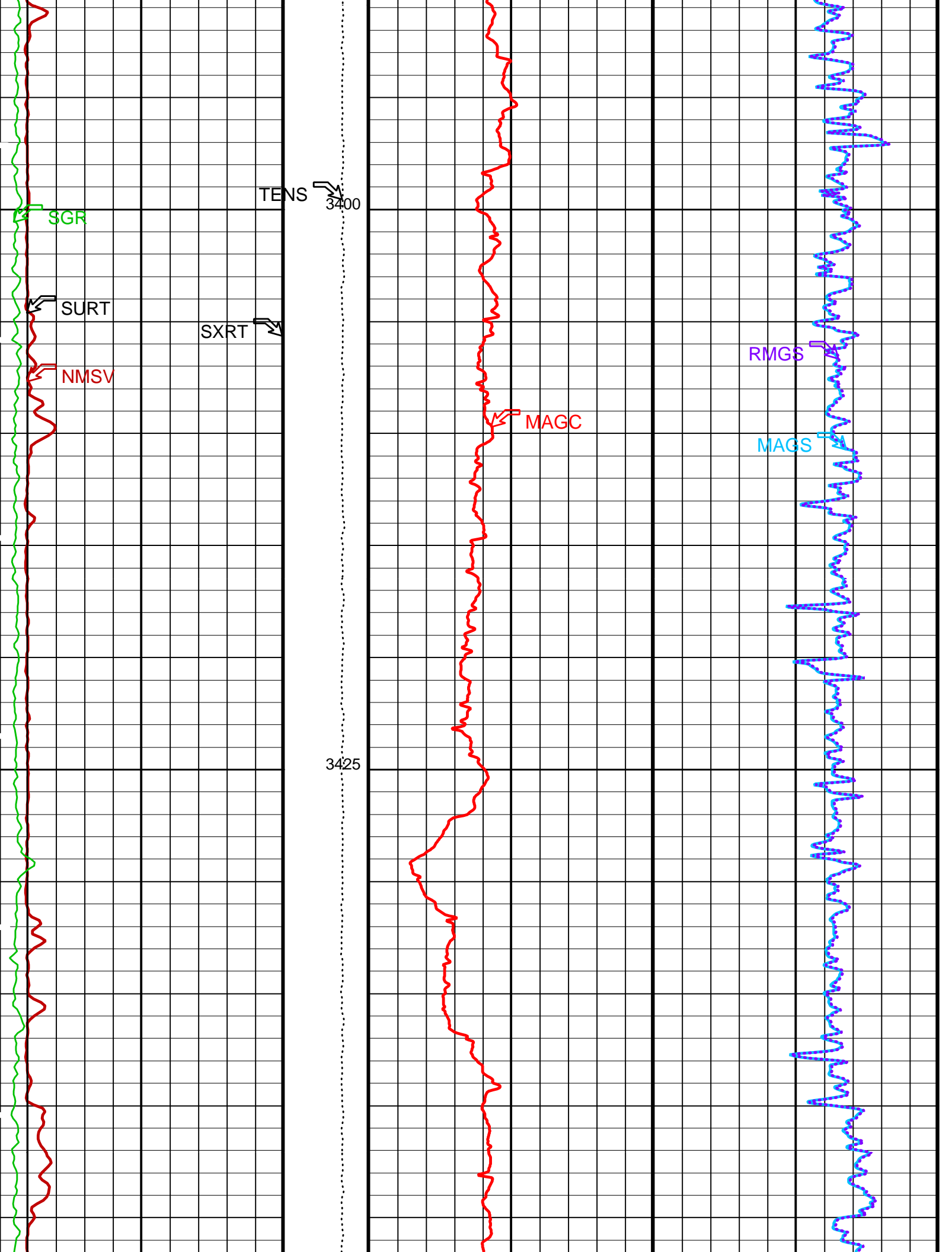
3250

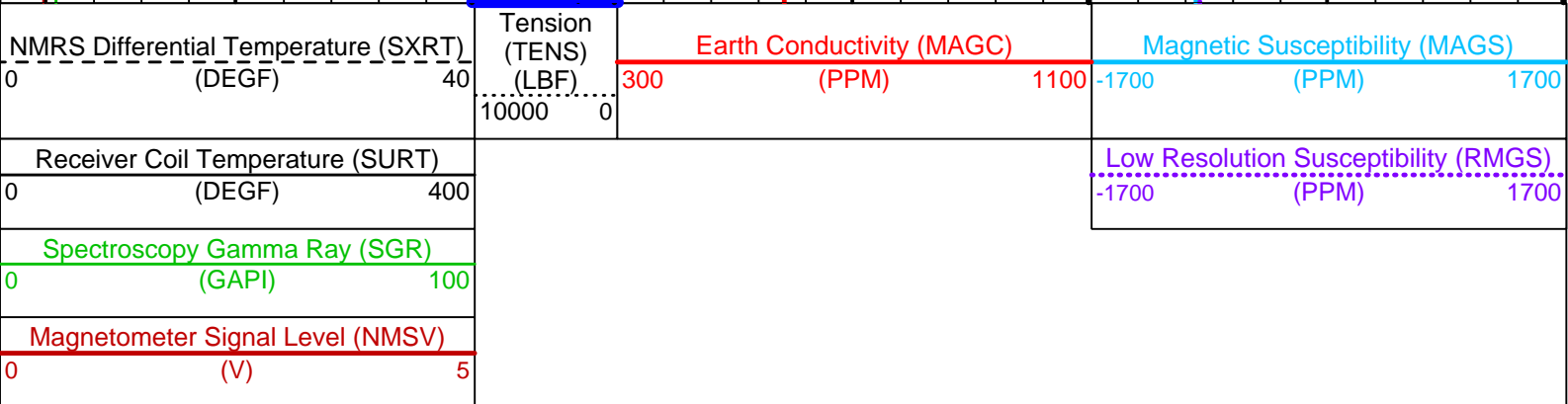
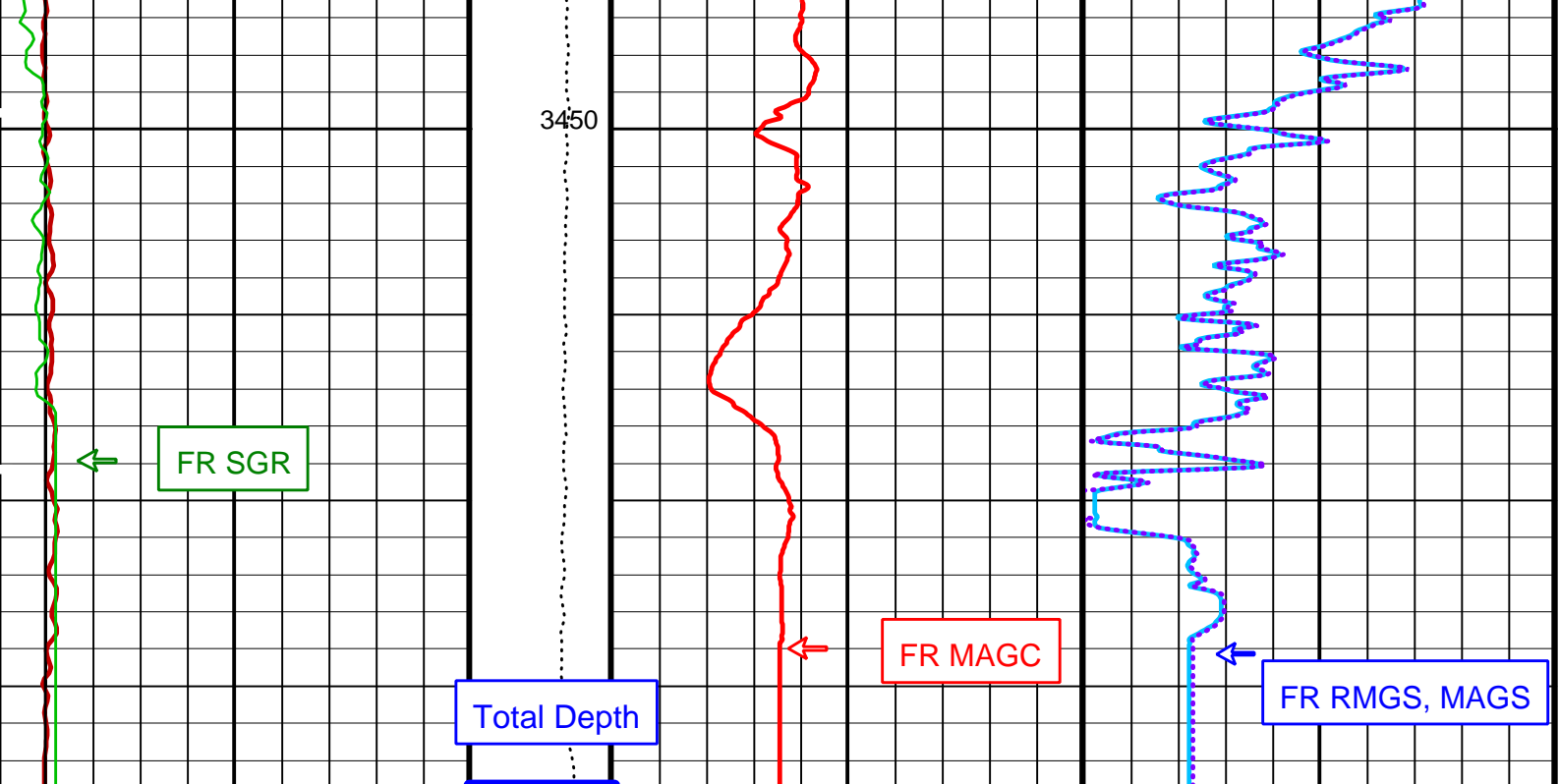
3275











PIP SUMMARY

Time Mark Every 60 S

Parameters

DLIS Name	Description	Value	
BS	Bit Size	9.875	IN
CBAR	Constant Barite	1	
CGMI	Spectro Computed Gamma Ray Minimum	0	GAPI
CGSH	Spectro Computed Gamma Ray Shale	100	GAPI
DFD	Drilling Fluid Density	9.18	LB/G
DO	Depth Offset for Playback	0.0	M
KMIN	Potassium Minimum	0	
KSHA	Potassium Shale	0.02	
NFO	NGT Filtering Option	KALMAN	
PMUD	Potassium Mud	0	%
PP	Playback Processing	NORMAL	
SGMI	Spectro Gamma Ray Minimum	0	GAPI
SGSH	Spectro Gamma Ray Shale	100	GAPI
TMIN	Thorium Minimum	0	PPM
TSHA	Thorium Shale	12	PPM
UMIN	Uranium Minimum	0	PPM
USHA	Uranium Shale	3	PPM

Format: GHMT Vertical Scale: 1:200 Graphics File Created: 14-Sep-2001 16:27

OP System Version: 9C2-303
MCM

GHMT-A	9C2-303	NGT-C	9C2-303
DTA-A	9C2-303	DTC-H	9C2-303

Input DLIS Files

DEFAULT GHMT_NGS_023LUP FN:17 PRODUCER 13-Sep-2001 13:47 3467.7 M 3214.7 M

Output DLIS Files

DEFAULT GHMT_NGS_029PUP FN:26 PRODUCER 14-Sep-2001 16:27

COMPANY: **Lamont Doherty**

WELL: **ODP Leg 198, Site 1207-B**

FIELD: **Shatsky Rise**

Country: **Japan**

Ocean: **Pacific Ocean**

BOTTOM LOG INTERVAL	3478 m
SCHLUMBERGER DEPTH	3479.3 m
DEPTH DRILLER	3734.5 m
KELLY BUSHING	11.3 m
DRILL FLOOR	11 m
GROUND LEVEL	-3111.7 m

Schlumberger

GHMT/NGTC