

Schlumberger

FMS Dyna. & Static Images CTC HiRes Density & Caliper Pass 2

COMPANY: Lamont Doherty

WELL: ODP Leg 199, Site 1218 A (PAT-8C)

FIELD: Pat_8

Ocean: Pacific

COUNTRY:

Date Processed: 17-Nov-2001 Date Logged: 16-Nov-2001

Job Number: Processed at:

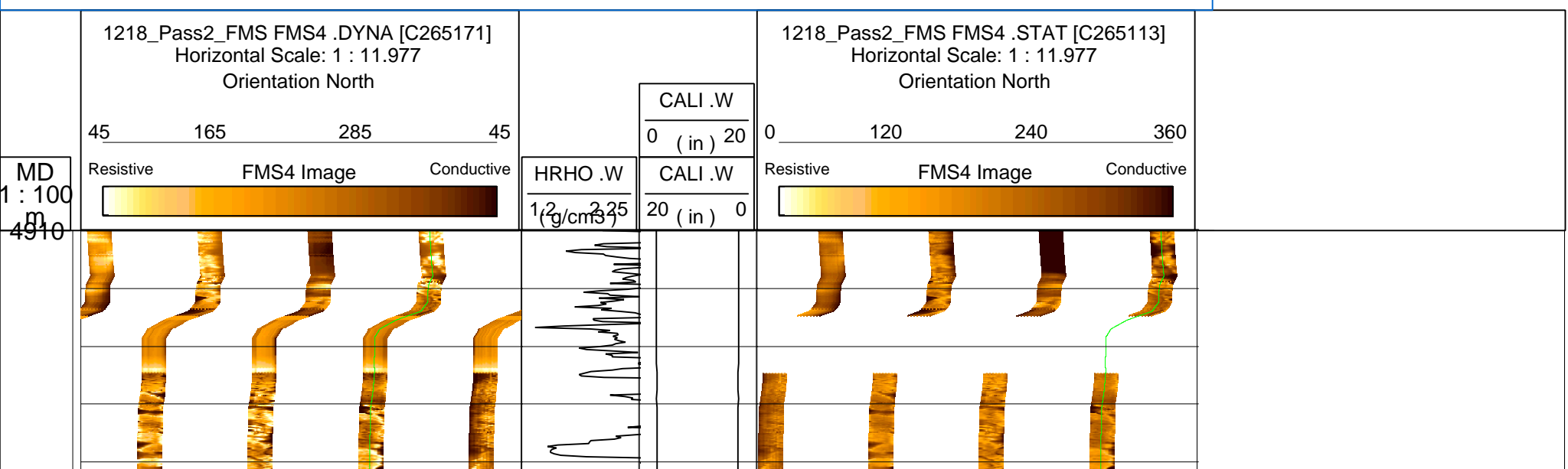
Well Location:

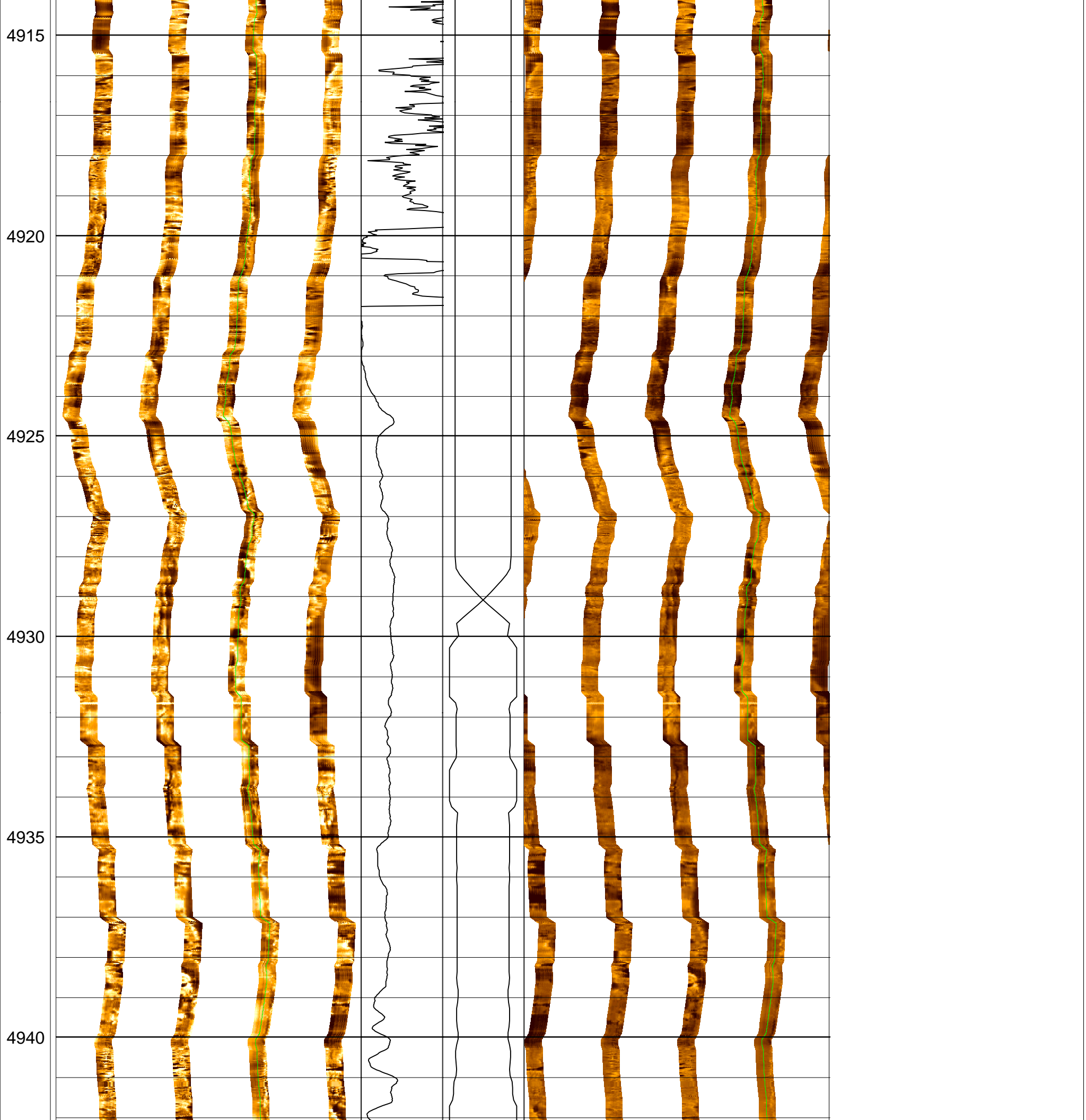
Latitude: 8.88 N Longitude: 135.366 W

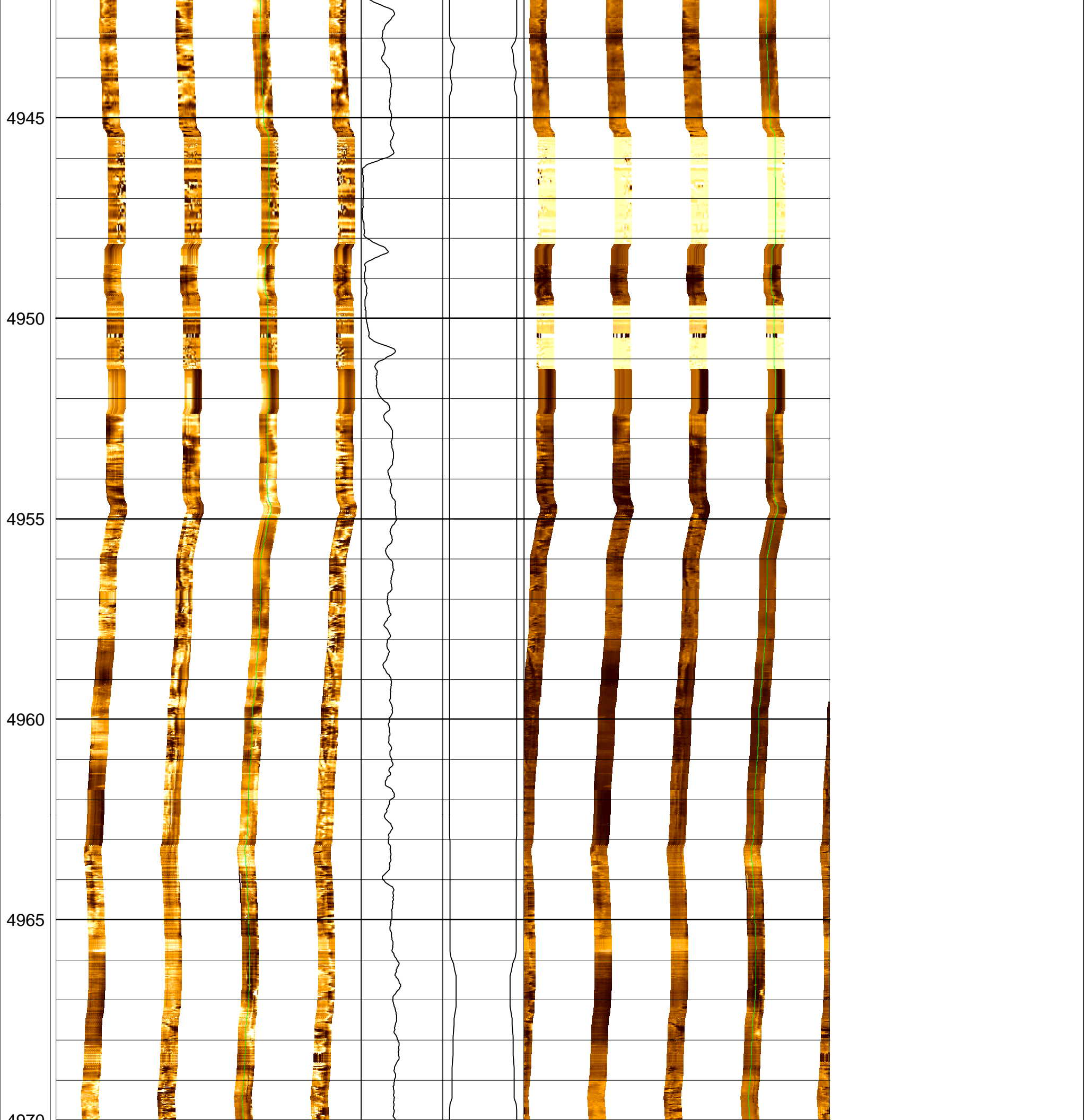
Elevations: KB: 11.3m DF: 11m GL: -4837m

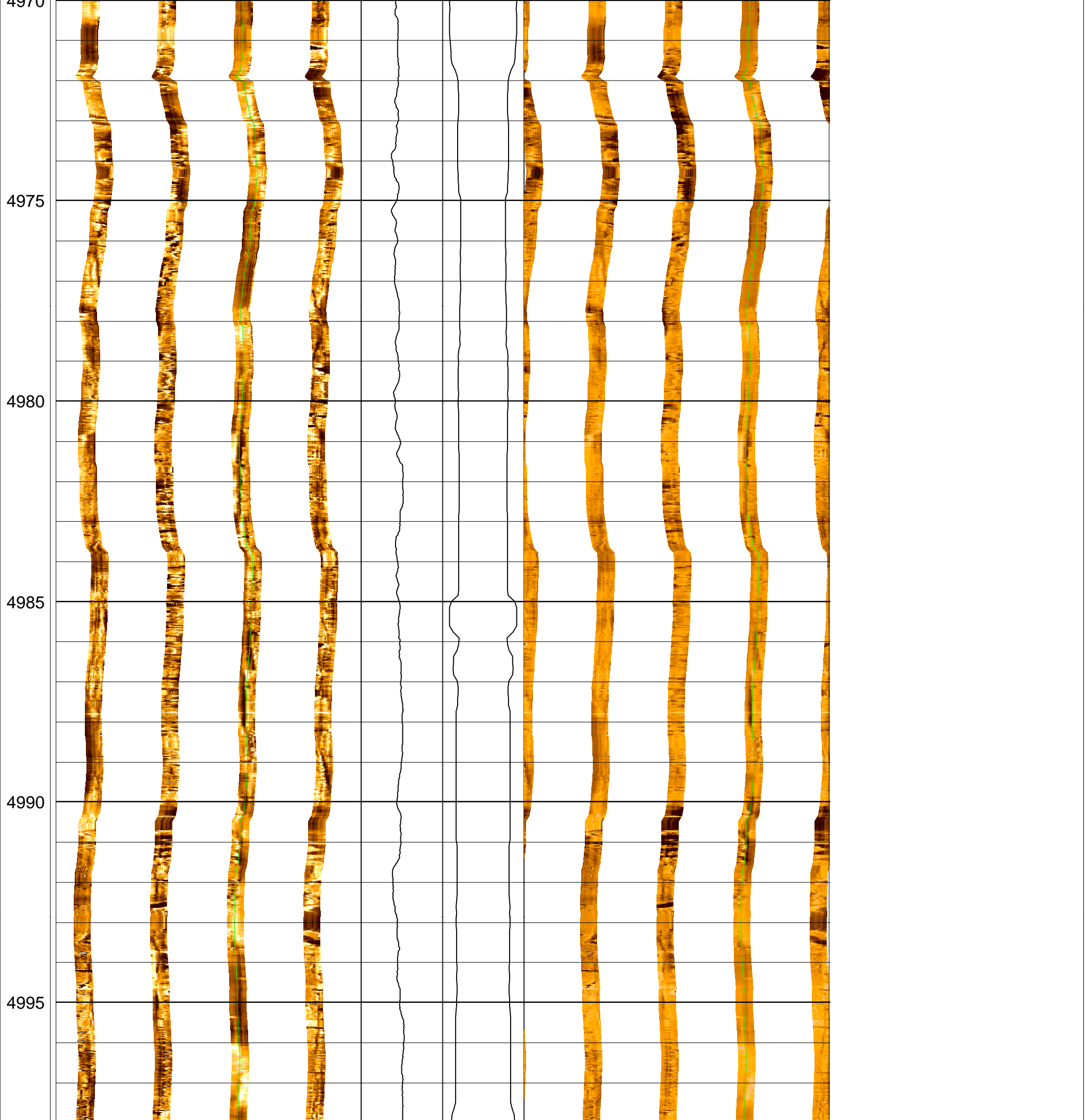
FOLD HERE The well name, location and borehole reference data were furnished by the customer.

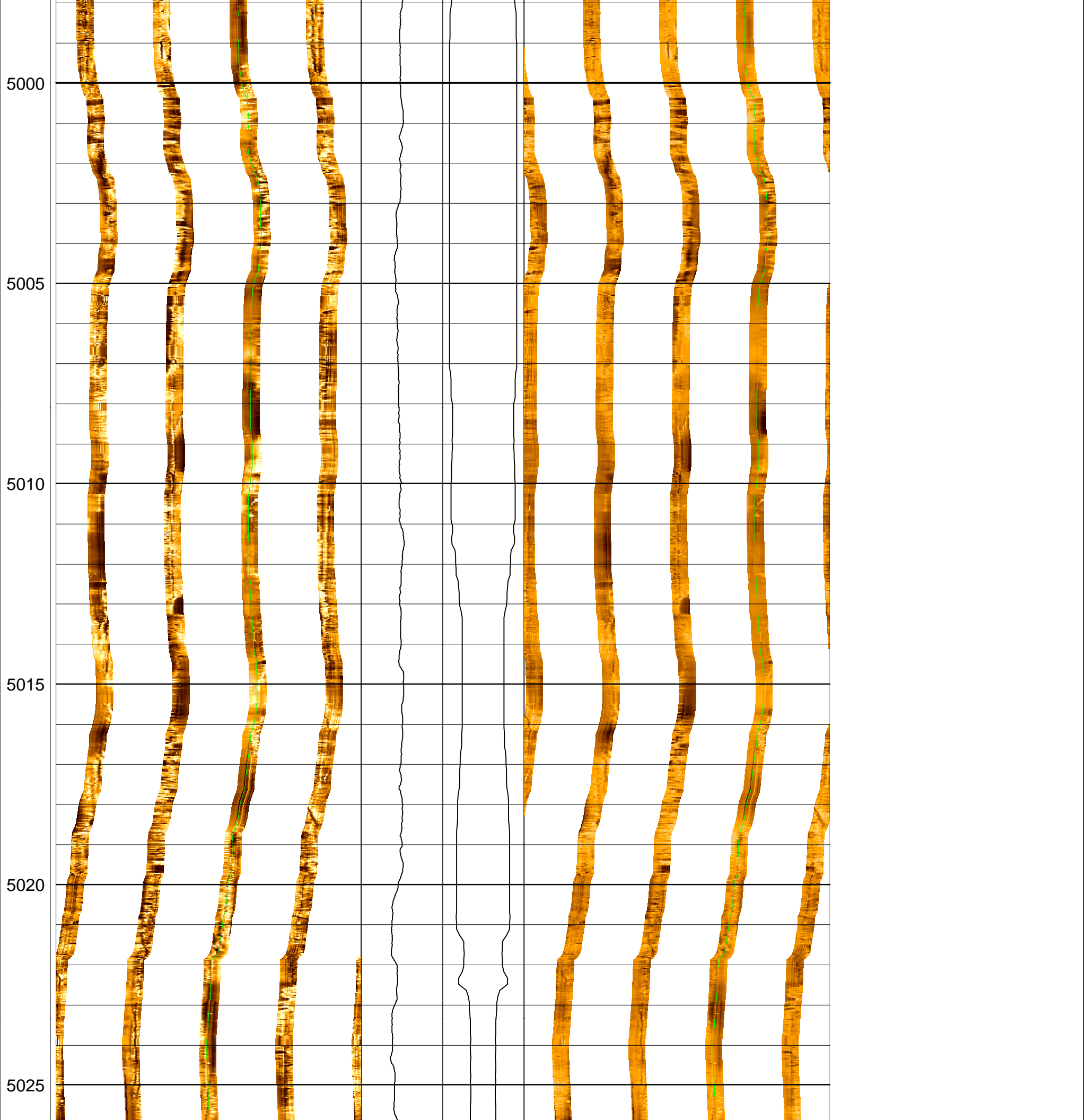
All interpretations are opinions based on inferences from electrical or other measurements and we cannot, and do not guarantee the accuracy or correctness of any interpretation, and we shall not, except in the case of gross or willful negligence on our part, be liable or responsible for any loss, costs, damages or expenses incurred or sustained by anyone resulting from any interpretations made by any of our officers, agents or employees. These interpretations are also subject to Clause 4 of our General Terms and Conditions as set out in our current Price Schedule.

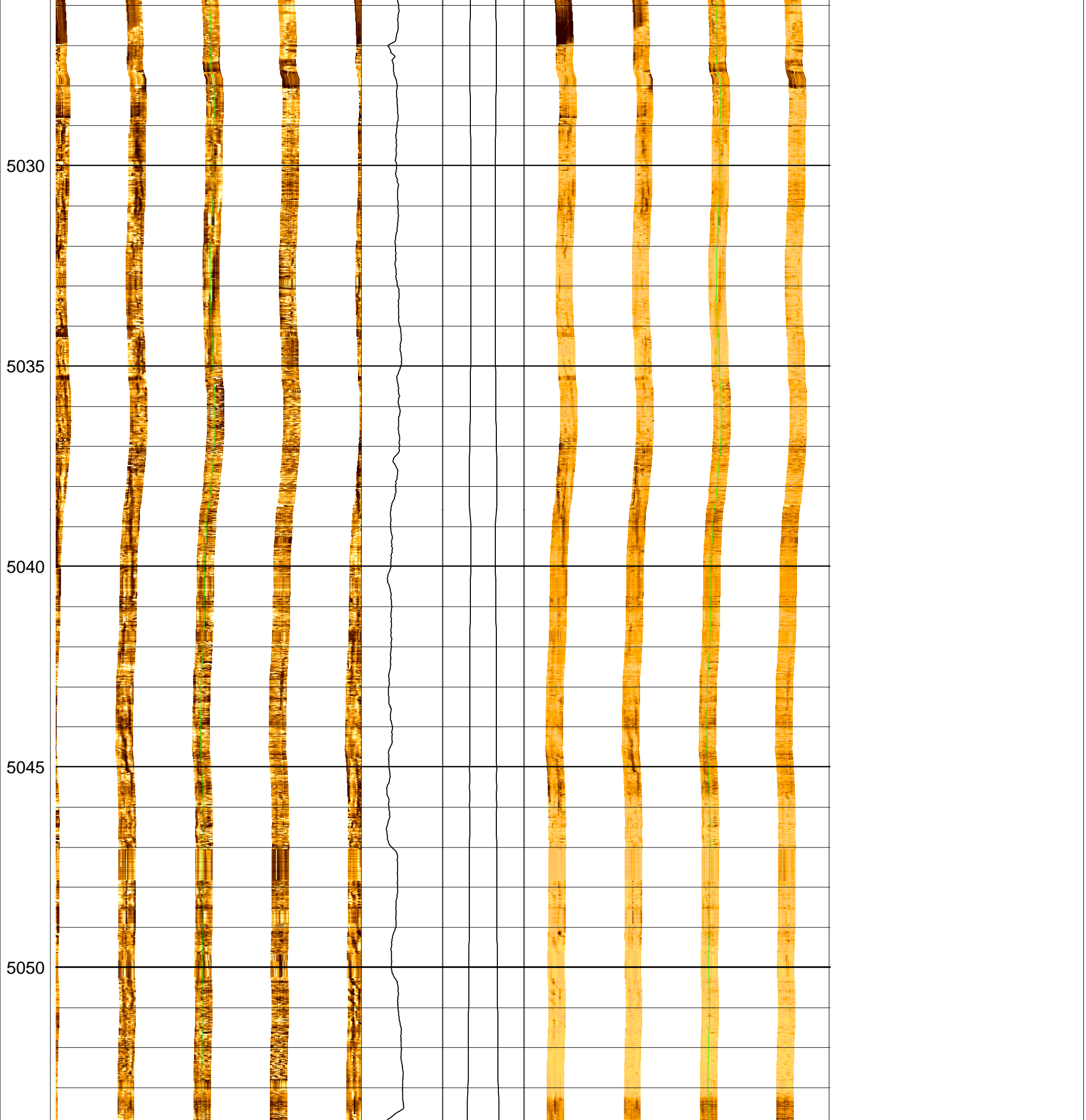


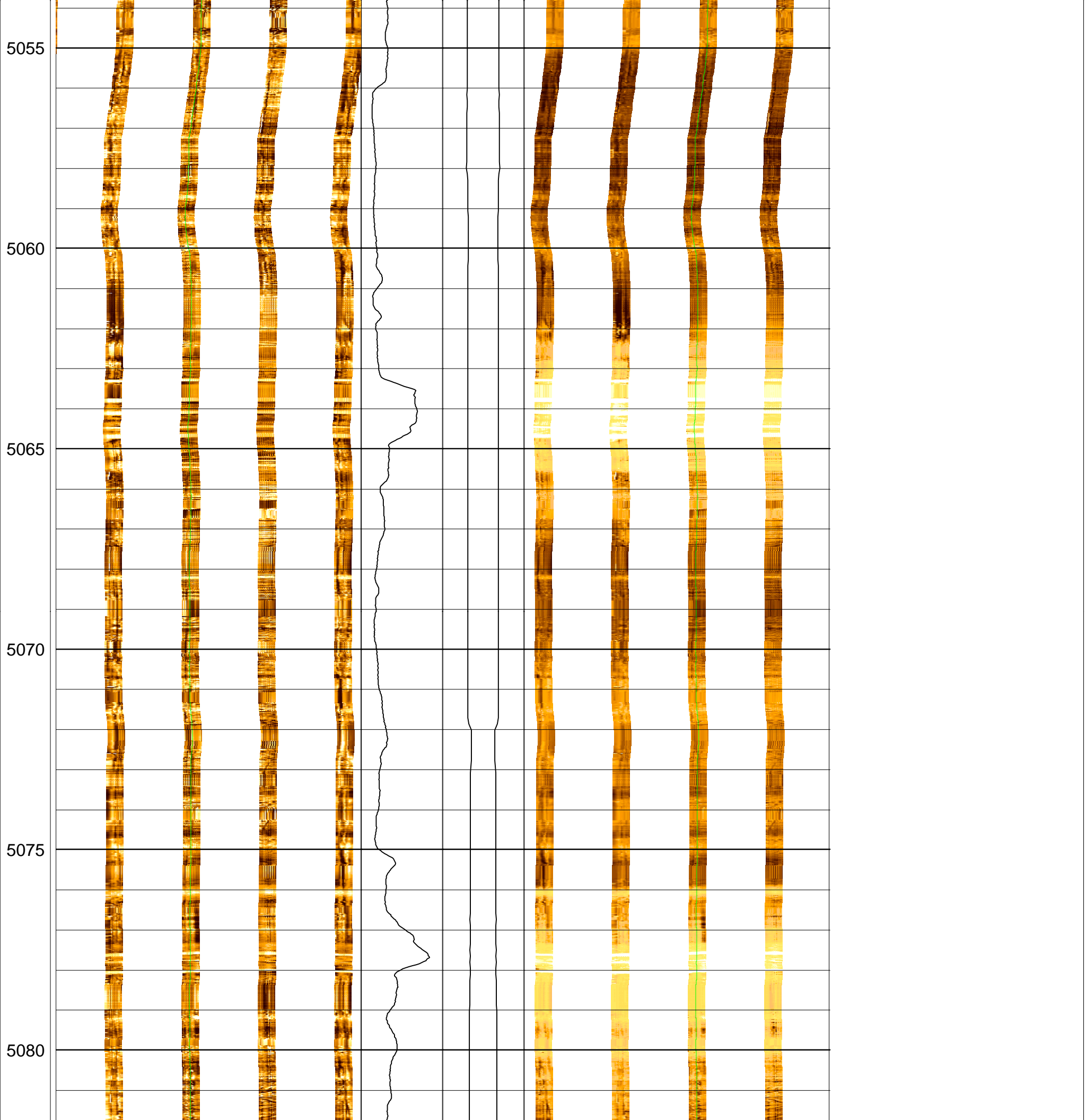


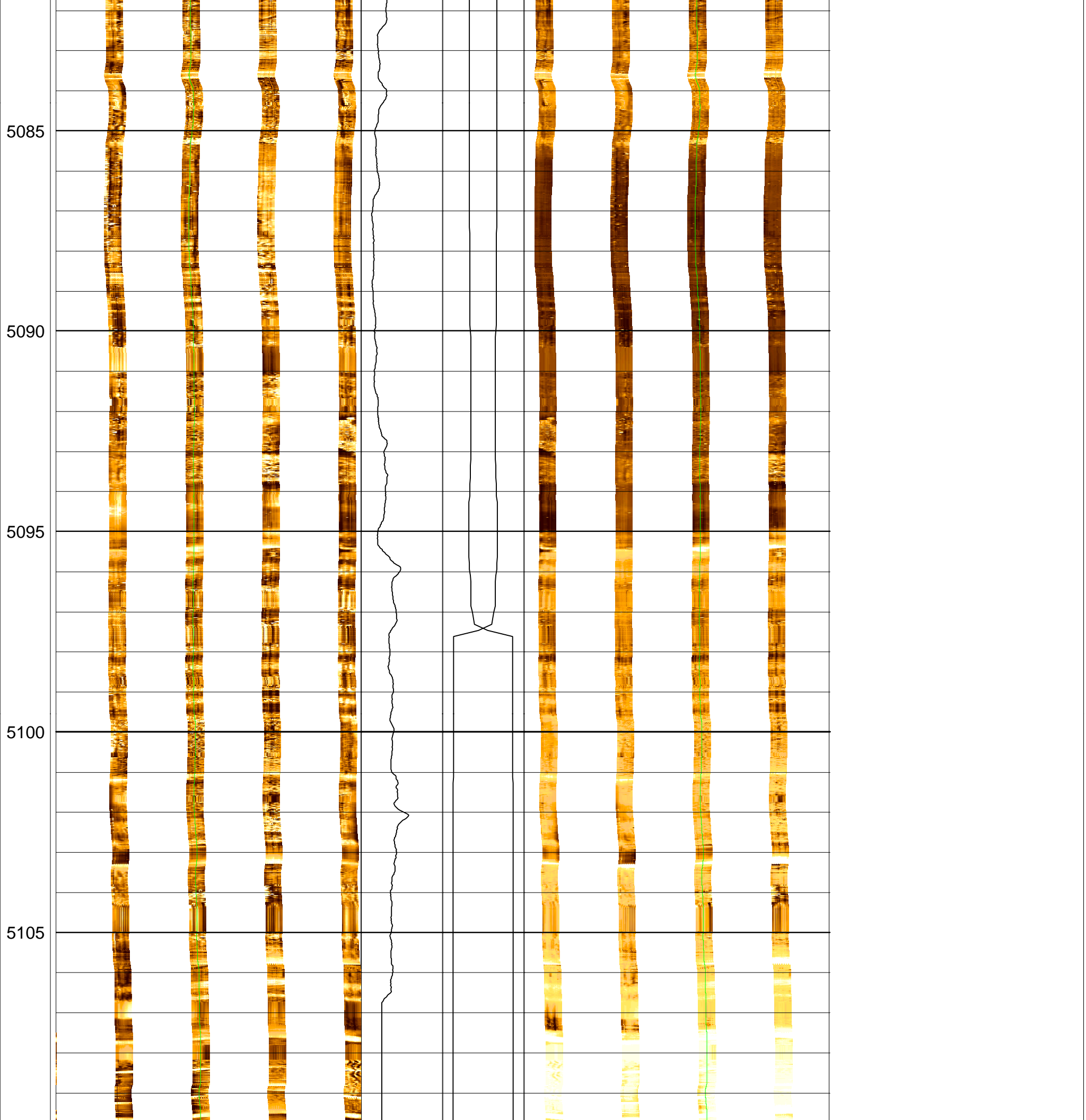




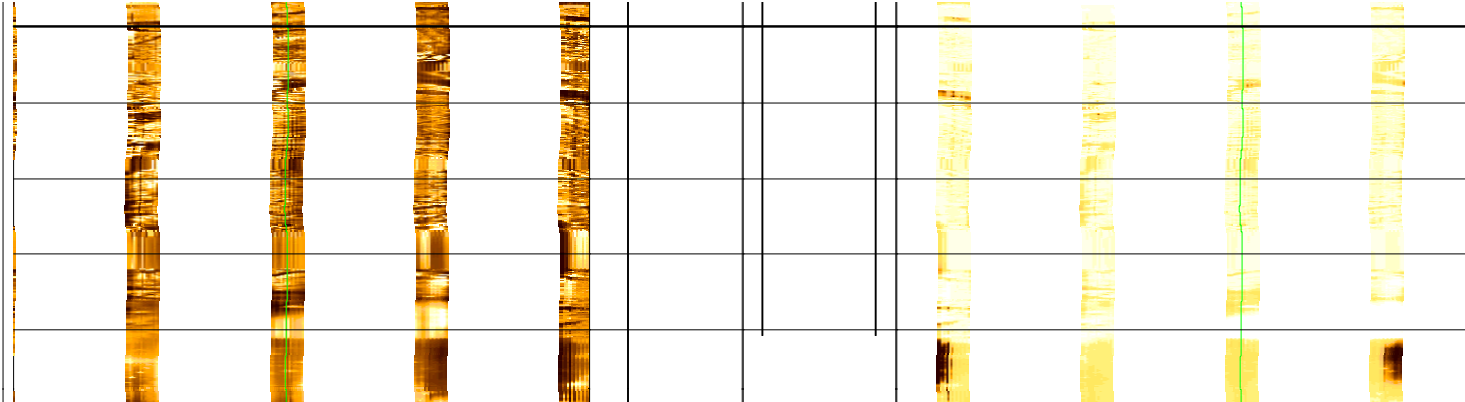








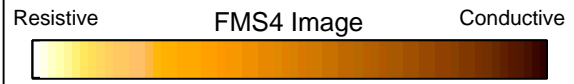
5110



5115
MD
1 : 100
m

1218_Pass2_FMS FMS4 .DYNA [C265171]
Horizontal Scale: 1 : 11.977
Orientation North

45 165 285 45



HRHO .W
1 (g/cm³) 2.25

CALI .W
20 (in) 0

CALI .W
0 (in) 20

1218_Pass2_FMS FMS4 .STAT [C265113]
Horizontal Scale: 1 : 11.977
Orientation North

0 120 240 360

