

DISCLAIMER






THE USE OF AND RELIANCE UPON THIS RECORDED-DATA BY THE HEREIN NAMED COMPANY (AND ANY OF ITS AFFILIATES, PARTNERS, REPRESENTATIVES, AGENTS, CONSULTANTS AND EMPLOYEES) IS SUBJECT TO THE TERMS AND CONDITIONS AGREED UPON BETWEEN SCHLUMBERGER AND THE COMPANY, INCLUDING: (a) RESTRICTIONS ON USE OF THE RECORDED-DATA; (b) DISCLAIMERS AND WAIVERS OF WARRANTIES AND REPRESENTATIONS REGARDING COMPANY'S USE OF AND RELIANCE UPON THE RECORDED-DATA; AND (c) CUSTOMER'S FULL AND SOLE RESPONSIBILITY FOR ANY INFERENCE DRAWN OR DECISION MADE IN CONNECTION WITH THE USE OF THIS RECORDED-DATA.

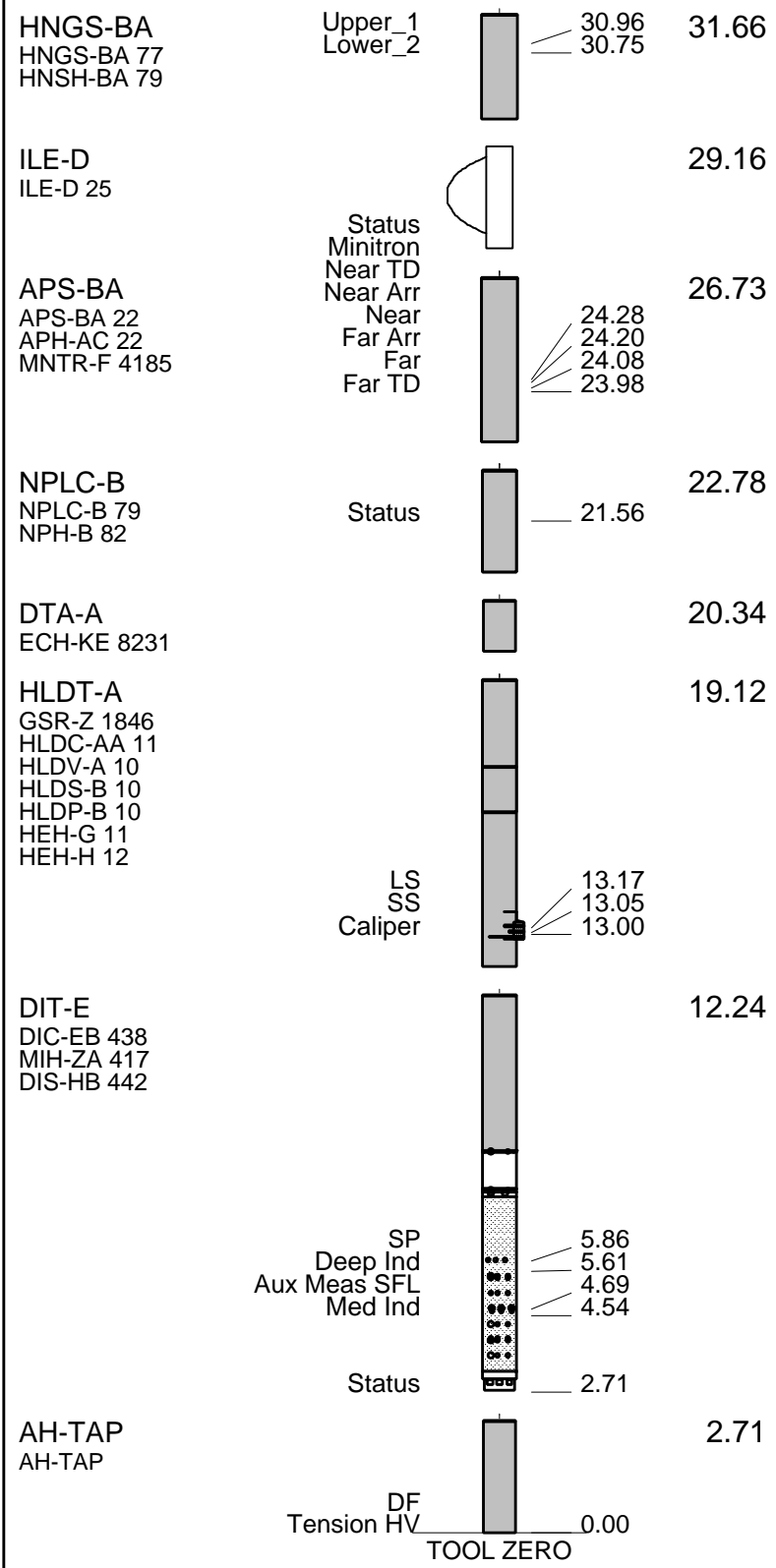
OTHER SERVICES1 OS1: OS2: SGT OS3: OS4: OS5:	OTHER SERVICES2 OS1: OS2: OS3: OS4: OS5:
---	---

REMARKS: RUN NUMBER 1 Hole cored with APC, PCS. Log presented in meters below rig floor. Lamont Temperature tool (TAP) was run on Triple Combo. Wireline Heave Compensator (WHC) was used on all descents. Sepiolite mud was used to displace the hole during the wiper trip. Drillers TD 474 mbrf, Driller pipe depth: 352 mbrf, Sea Floor: 273 mbrf.	REMARKS: RUN NUMBER 2
Software bug shows APS calibration not done for part of calibration. Low background countrate on HNGS master calibration signifies a weak internal source used for check of detector and does not affect calibration or LQC.	

RUN 1			RUN 2		
SERVICE ORDER #:	PROGRAM VERSION: 10C0-306		SERVICE ORDER #:	PROGRAM VERSION:	
FLUID LEVEL:			FLUID LEVEL:		
LOGGED INTERVAL	START	STOP	LOGGED INTERVAL	START	STOP

EQUIPMENT DESCRIPTION

RUN 1		RUN 2	
SURFACE EQUIPMENT			
SFT-281 24 SFT-178 4722 GSR-U 135 GSR-U/Y WITM (DTS)-A			
DOWNHOLE EQUIPMENT			
LEH-QT			35.14
LEH-QT 1726			
DTC-H	CTEM		33.98
ECH-KC 9343	TelStatus		34.25
SGT-N	ToolStatu		33.34
SGH-K 2448	Gamma Ray		33.06
SCC TR 0582			



TOOL ZERO

MAXIMUM STRING DIAMETER 3.88 IN
MEASUREMENTS RELATIVE TO TOOL ZERO
ALL LENGTHS IN METERS

Output DLIS Files

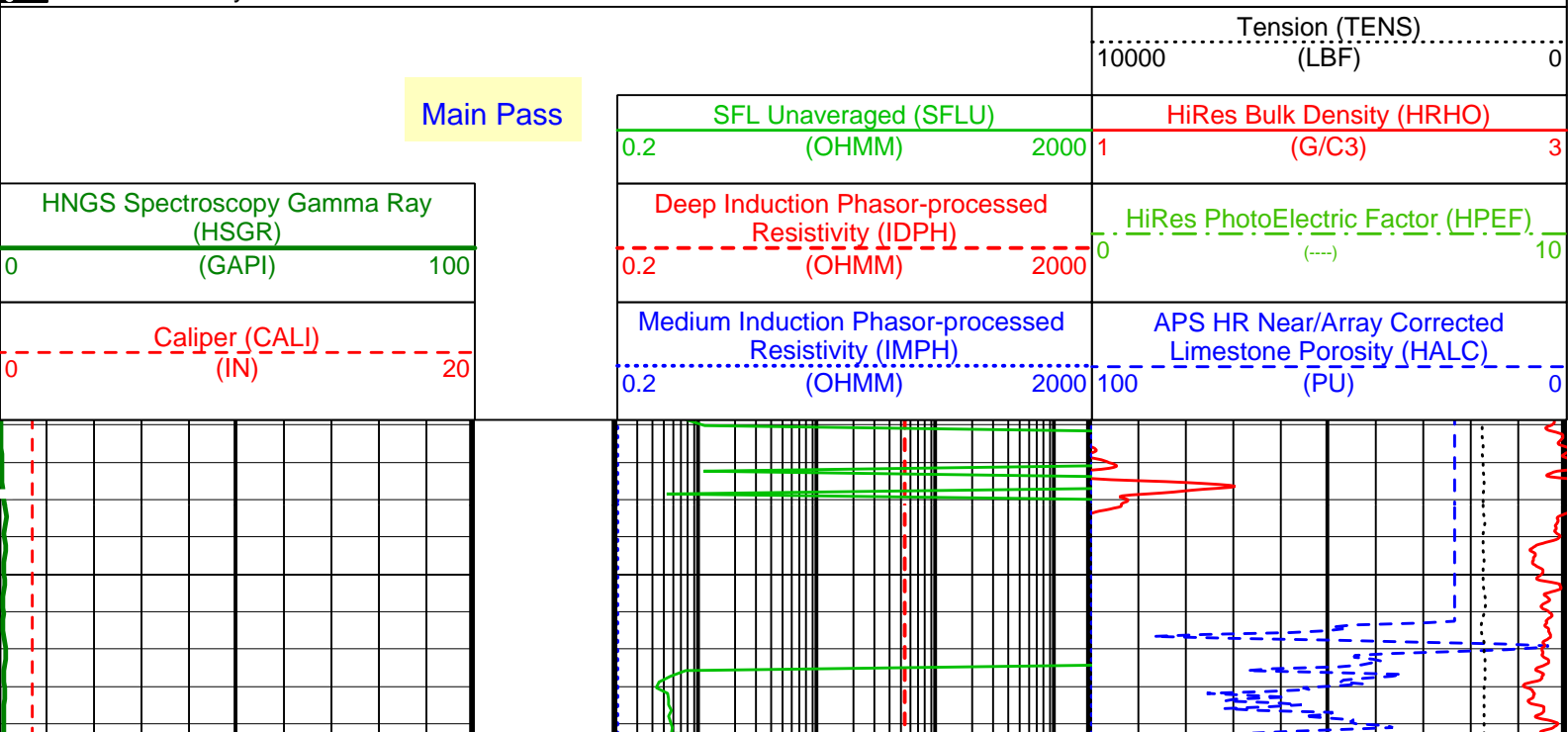
DEFAULT	PI_LDL_APS_NGS_005LUP	FN:6	PRODUCER	05-Mar-2002 20:24	475.5 M	255.9 M
REDUCE	PI_LDL_APS_NGS_005LUP	FN:7	PRODUCER	05-Mar-2002 20:24	475.5 M	255.9 M

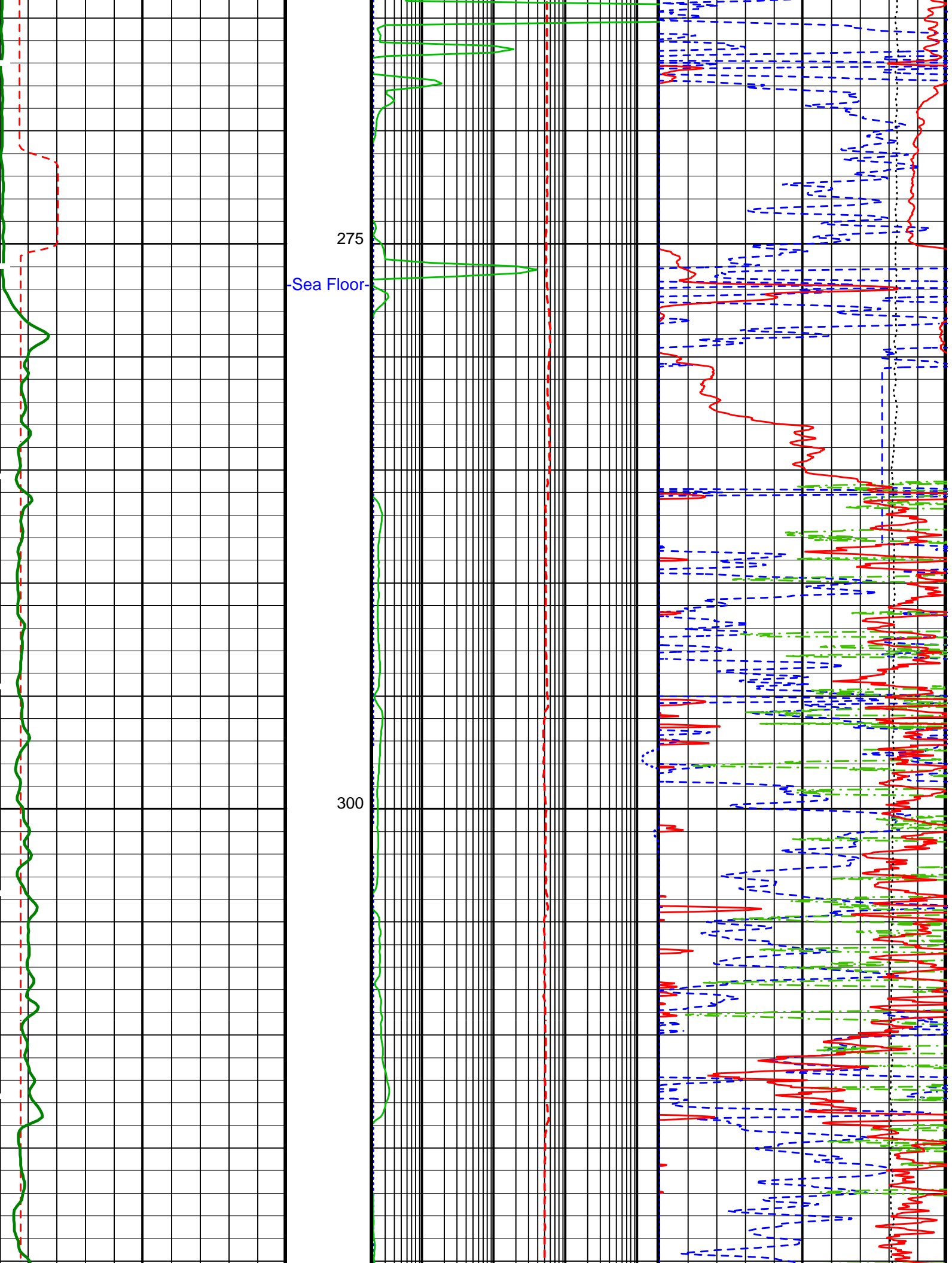
OP System Version: 10C0-306 MCM

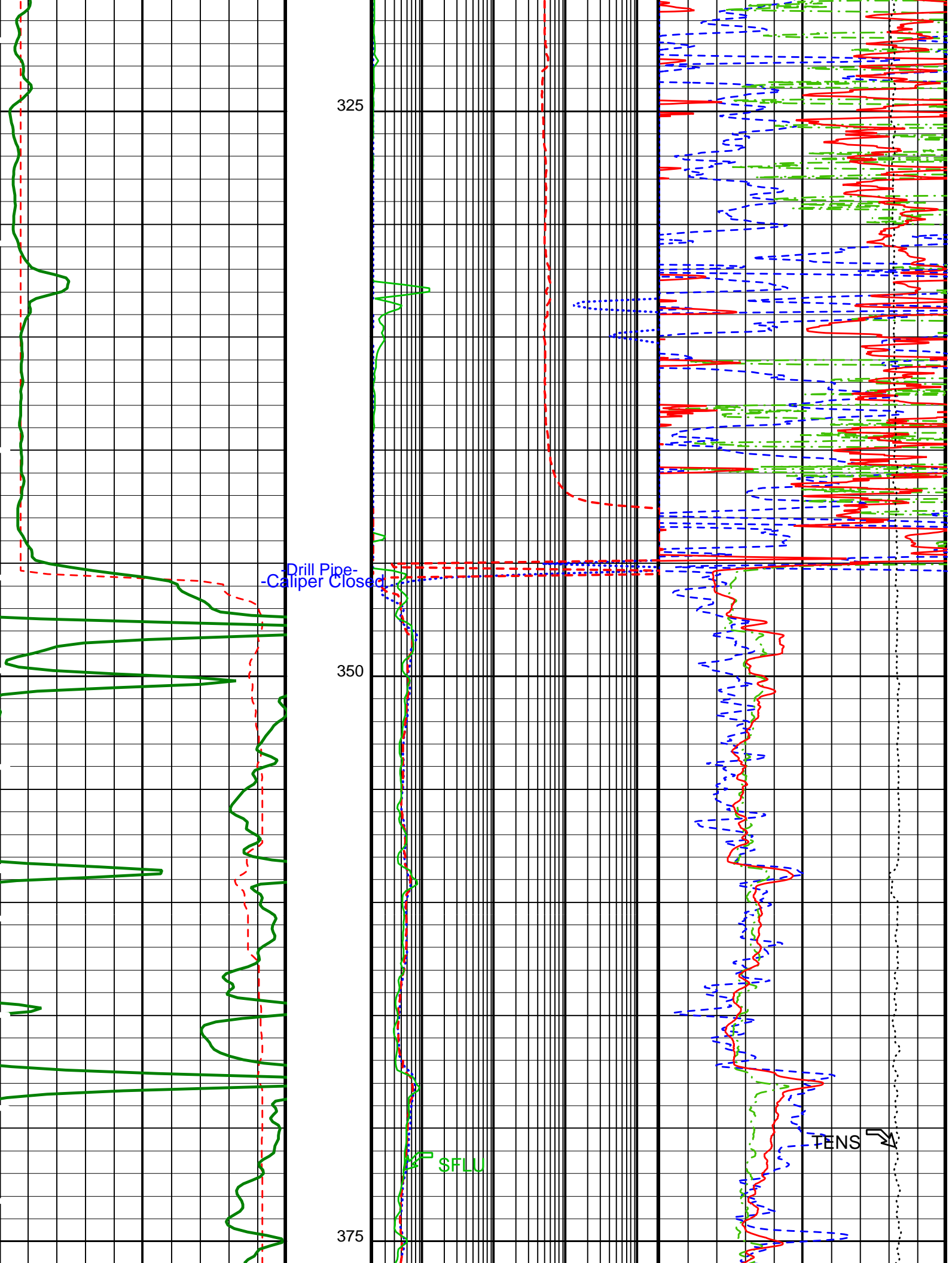
DIT-E	10C0-306	HLDT-A	10C0-306
DTA-A	10C0-306	NPLC-B	10C0-306
APS-BA	10C0-306	HNGS-BA	10C0-306
SGT-N	10C0-306	DTC-H	10C0-306

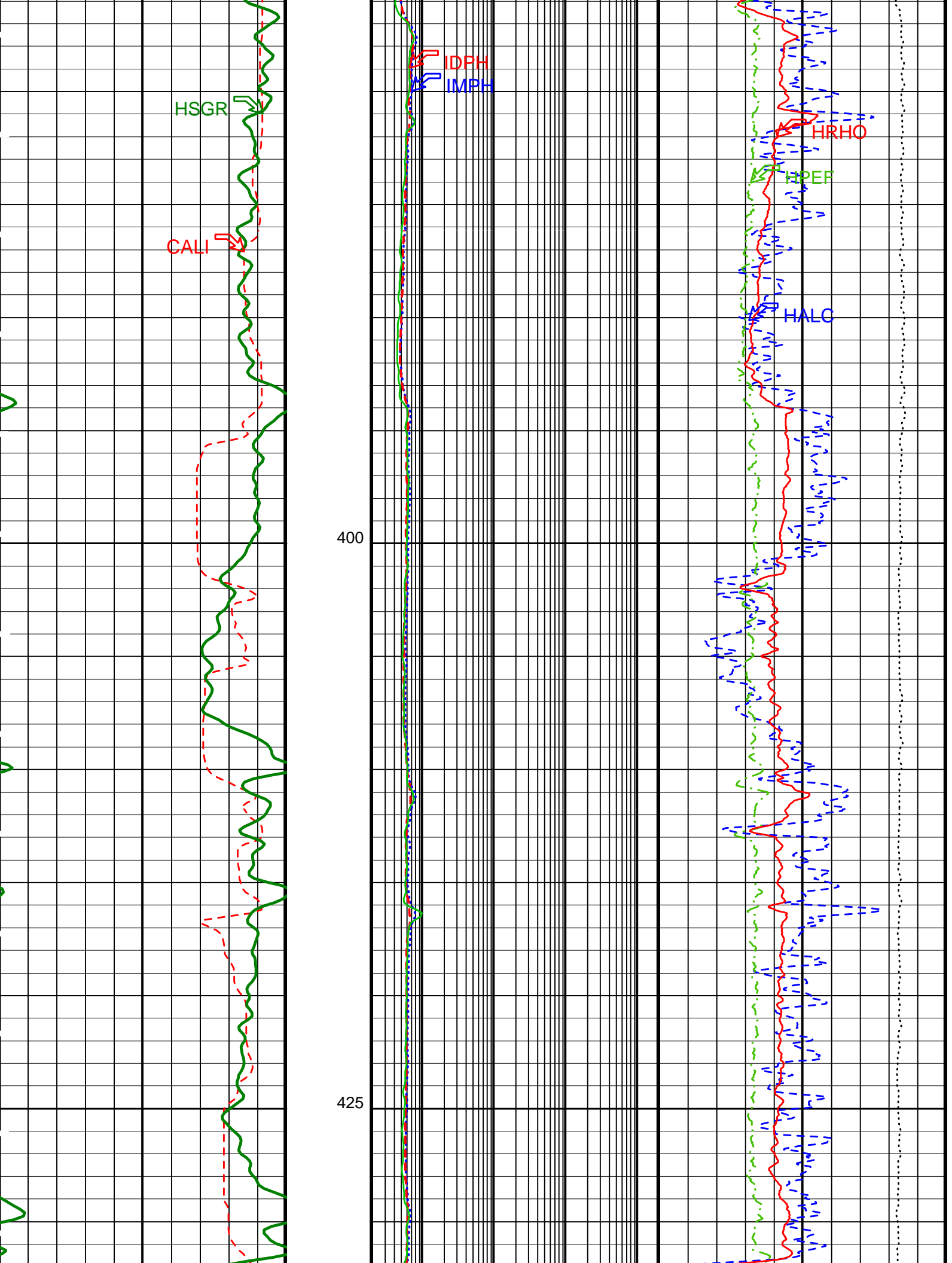
PIP SUMMARY

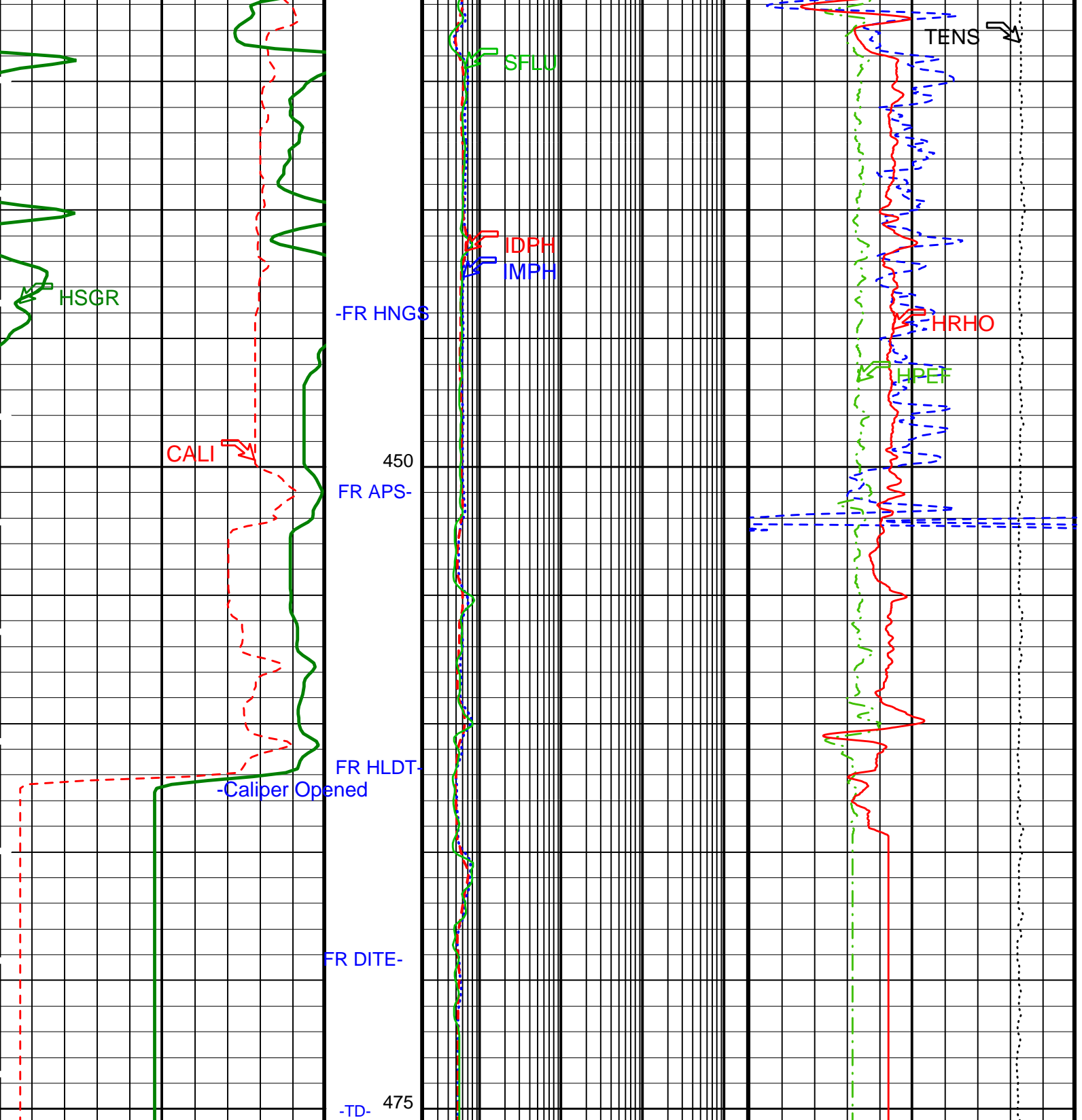
Time Mark Every 60 S











<p>Caliper (CALI) (IN)</p> <p>0 20</p>	<p>Medium Induction Phasor-processed Resistivity (IMPH) (OHMM)</p> <p>0.2 2000</p>	<p>APS HR Near/Array Corrected Limestone Porosity (HALC) (PU)</p> <p>100 0</p>
<p>HNGS Spectroscopy Gamma Ray (HSGR) (GAPI)</p> <p>0 100</p>	<p>Deep Induction Phasor-processed Resistivity (IDPH) (OHMM)</p> <p>0.2 2000</p>	<p>HiRes PhotoElectric Factor (HPEF) (---)</p> <p>0 10</p>
<p>SFL Unaveraged (SFLU) (OHMM)</p> <p>0.2 2000</p>	<p>HiRes Bulk Density (HRHO) (G/C3)</p> <p>1 3</p>	<p>Tension (TENS) (LBF)</p> <p>10000 0</p>

Main Pass

Parameters

DLIS Name	Description	Value	
DIT-E: Dual Induction - E			
BHS	Borehole Status	OPEN	
BHT	Bottom Hole Temperature (used in calculations)	40	DEGF
DGF2	Deep 20 kHz Gain Factor	1.00789	
DPH2	Deep 20 kHz Phase Shift	-0.152394	DEG
DRE2	Deep Real 20 kHz Sonde Error Correction	16.357	MM/M
DSR2	Deep Sigma Reference (20 kHz)	1843	MM/M
DXE2	Deep Quad 20 kHz Sonde Error Correction	64.6326	MM/M
GCSE	Generalized Caliper Selection	CALI	
GDEV	Average Angular Deviation of Borehole from Normal	0	DEG
GGRD	Geothermal Gradient	0.01	DF/F
GTSE	Generalized Temperature Selection	LINEAR_ESTIMATE	
IFRS	DIT-E Induction Frequency Selector	20	
IPHA	DIT-E Phasor Processing Mode	ALL	
IPRO	DIT-E Induction Processing Selector	PHASOR	
ITEN	DIT-E Temperature Enable	ENABLE	
MGF2	Medium 20 kHz Gain Factor	1.02964	
MPH2	Medium 20 kHz Phase Shift	-0.933067	DEG
MRE2	Medium Real 20 kHz Sonde Error Correction	-1.78642	MM/M
MSR2	Medium Sigma Reference (20 kHz)	3250	MM/M
MXE2	Medium Quad 20 kHz Sonde Error Correction	-34.2041	MM/M
SFCR	SFL Channel Ratio	1000	
SHT	Surface Hole Temperature	68	DEGF
HLDT-A: Hostile Environment Litho Density - A			
DHC	Density Hole Correction	BS	
DPPM	Density Porosity Processing Mode	HIRS	
QPPS	Quicklook Processing Pe Select	PEFL	
WMUD	Mud Weight	1.07	G/C3
APS-BA: Accelerator-Porosity Tool			
	APS Software Version	5	
AASD	APS Thermal and Array Detectors High Voltage Setting	1968.98	V
ABOS	APS Neutron Burst-Off Background Subtraction Switch	ON	
ADSO	APS Array Detectors Data Source Switch	Both	
AFSD	APS Far Detector High Voltage Setting	2052.03	V
AHCS	APS Holesize Correction Source	GCSE	
AHSS	APS Holesize Correction Switch	ON	
AMTY	APS Environmental Corrections Mud Type	WaterBaseBarite	
ANSD	APS Near Detector High Voltage Setting	1748.3	V
ASOS	APS Standoff Correction Switch	ON	
ATSS	APS Temperature-Pressure-Salinity Correction Switch	OFF	
BHS	Borehole Status	OPEN	
BHT	Bottom Hole Temperature (used in calculations)	40	DEGF
DPPM	Density Porosity Processing Mode	HIRS	
FSAL	Formation Salinity	-50000	PPM
GCSE	Generalized Caliper Selection	CALI	
GDEV	Average Angular Deviation of Borehole from Normal	0	DEG
GGRD	Geothermal Gradient	0.01	DF/F
GTSE	Generalized Temperature Selection	LINEAR_ESTIMATE	
NARC	APS Near/Array Calibration Ratio	1.0631	
NFRC	APS Near/Far Calibration Ratio	0.902243	
SHT	Surface Hole Temperature	68	DEGF
HNGBA: Hostile Natural Gamma Ray Sonde			
BAR1	HNGBA Detector 1 Barite Constant	1	
BAR2	HNGBA Detector 2 Barite Constant	1	
BHK	HNGBA Borehole Potassium Correction Concentration	0	
BHS	Borehole Status	OPEN	
BHT	Bottom Hole Temperature (used in calculations)	40	DEGF
CSD1	Inner Casing Outer Diameter	0	IN
CSD2	Outer Casing Outer Diameter	0	IN
CSW1	Inner Casing Weight	0	LB/F
CSW2	Outer Casing Weight	0	LB/F
DBCC	HNGBA Barite Constant Correction Flag	NONE	
GCSE	Generalized Caliper Selection	CALI	
GDEV	Average Angular Deviation of Borehole from Normal	0	DEG
GGRD	Geothermal Gradient	0.01	DF/F
GTSE	Generalized Temperature Selection	LINEAR_ESTIMATE	
H1P	HNGBA Detector 1 Allow/Disallow In Processing	ALLOW	
H2P	HNGBA Detector 2 Allow/Disallow In Processing	ALLOW	
HABK	HNGBA Borehole Potassium Running Average	-0.00491096	
HALF	HNGBA Alpha Filter Length	60	IN
HCRB	HNGBA Apply Borehole Potassium Correction	NONE	
HMWM	Mud Weighting Material	NATU	
HNPE	HNGBA Processing Enable	YES	
S1BI	HNGBA Detector 1 Calibration Bismuth Count Rate	1.3	CPS
S2BI	HNGBA Detector 2 Calibration Bismuth Count Rate	1.3	CPS
SGRC	HNGBA Standard Gamma-Ray Correction Flag	YES	
SHT	Surface Hole Temperature	68	DEGF
TPOS	Tool Position	ECCE	

TCO	TCO Position	LOGE	
VBA1	HNGS Detector 1 Variable Barite Factor Running Average	0.77628	
VBA2	HNGS Detector 2 Variable Barite Factor Running Average	0.814463	
SGT-N: Scintillation Gamma-Ray - N			
BHS	Borehole Status	OPEN	
BHT	Bottom Hole Temperature (used in calculations)	40	DEGF
DPPM	Density Porosity Processing Mode	HIRS	
GCSE	Generalized Caliper Selection	CALI	
GDEV	Average Angular Deviation of Borehole from Normal	0	DEG
GGRD	Geothermal Gradient	0.01	DF/F
GTSE	Generalized Temperature Selection	LINEAR_ESTIMATE	
SHT	Surface Hole Temperature	68	DEGF
HOLEV: Integrated Hole/Cement Volume			
BHS	Borehole Status	OPEN	
BHT	Bottom Hole Temperature (used in calculations)	40	DEGF
GCSE	Generalized Caliper Selection	CALI	
GDEV	Average Angular Deviation of Borehole from Normal	0	DEG
GGRD	Geothermal Gradient	0.01	DF/F
GTSE	Generalized Temperature Selection	LINEAR_ESTIMATE	
SHT	Surface Hole Temperature	68	DEGF
System and Miscellaneous			
BS	Bit Size	11.438	IN
BSAL	Borehole Salinity	-50000.00	PPM
CSIZ	Current Casing Size	0.000	IN
CWEI	Casing Weight	0.00	LB/F
DFD	Drilling Fluid Density	1.07	G/C3
TD	Total Depth	-50000	FT

Format: HLDT_HR_TCOM Vertical Scale: 1:200 Graphics File Created: 05-Mar-2002 20:24

OP System Version: 10C0-306

MCM

DIT-E	10C0-306	HLDT-A	10C0-306
DTA-A	10C0-306	NPLC-B	10C0-306
APS-BA	10C0-306	HNGS-BA	10C0-306
SGT-N	10C0-306	DTC-H	10C0-306

Output DLIS Files

DEFAULT	PI_LDL_APS_NGS_005LUP	FN:6	PRODUCER	05-Mar-2002 20:24
REDUCE	PI_LDL_APS_NGS_005LUP	FN:7	PRODUCER	05-Mar-2002 20:24

Output DLIS Files

DEFAULT	PI_LDL_APS_NGS_006LUP	FN:8	PRODUCER	05-Mar-2002 21:13	475.5 M	321.1 M
REDUCE	PI_LDL_APS_NGS_006LUP	FN:9	PRODUCER	05-Mar-2002 21:13	475.5 M	321.1 M

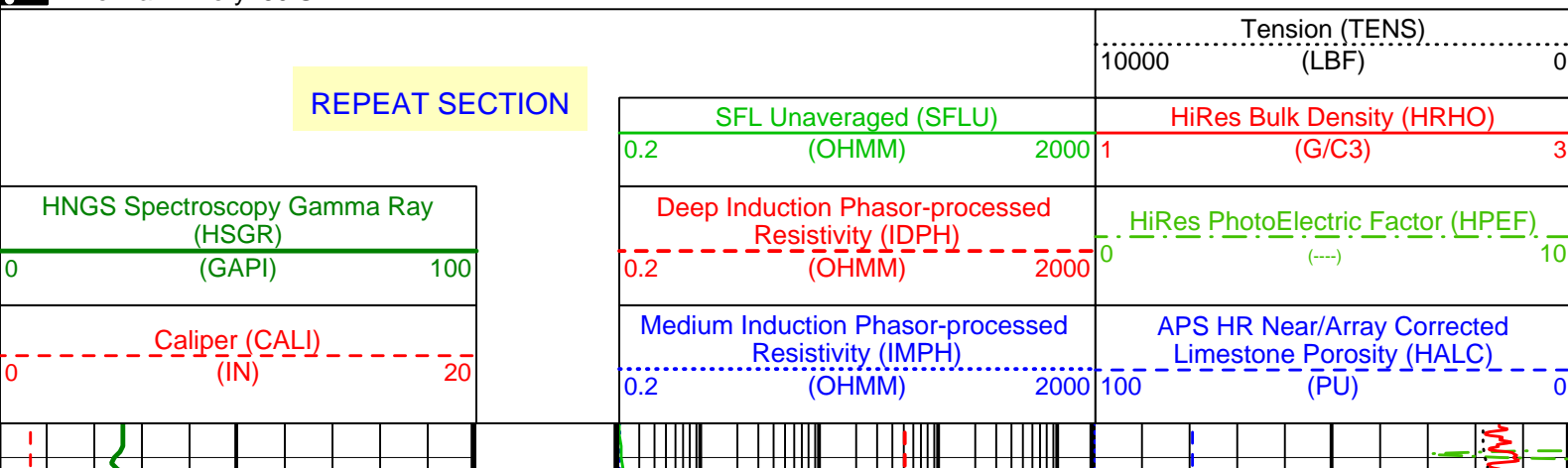
OP System Version: 10C0-306

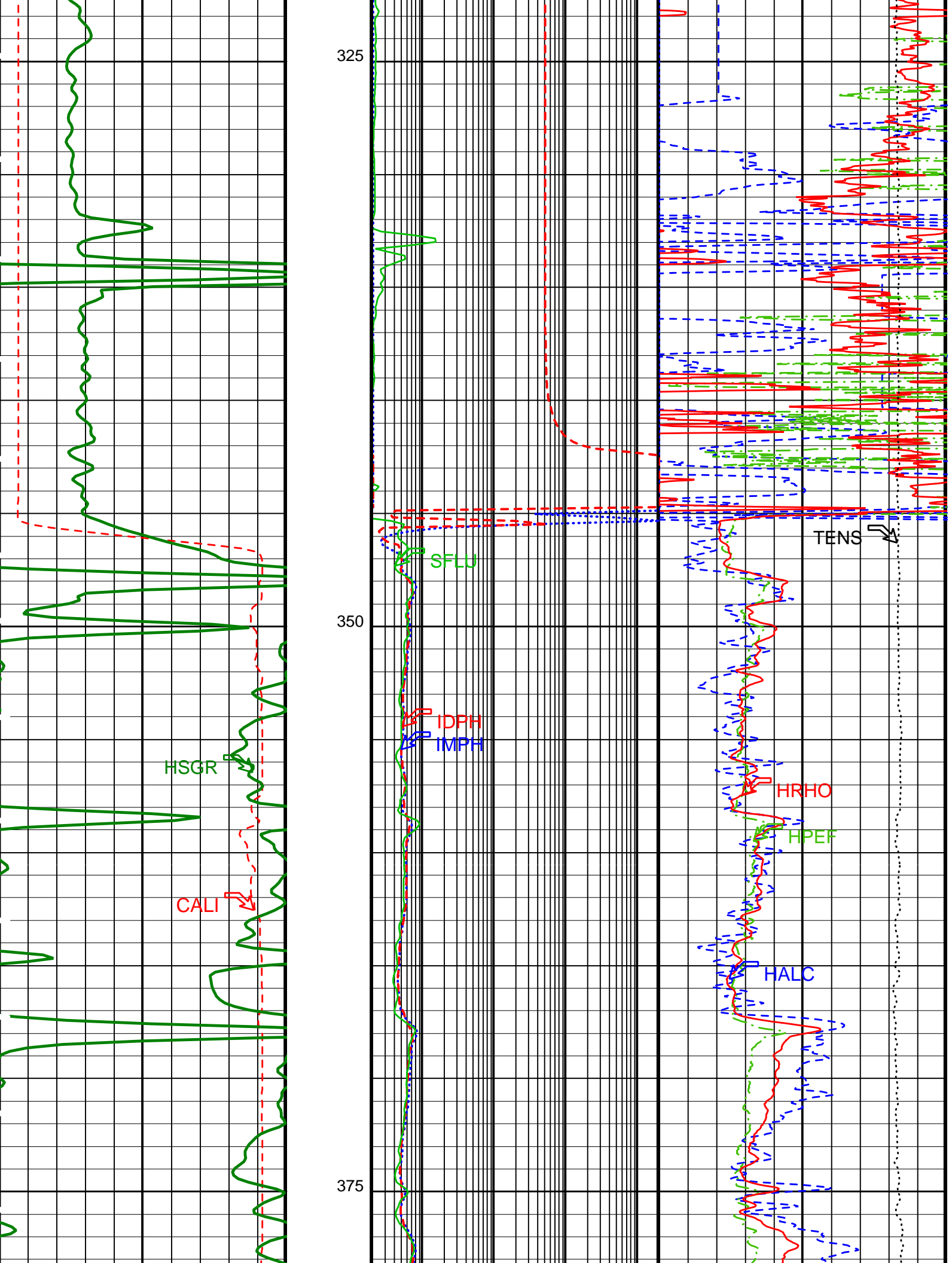
MCM

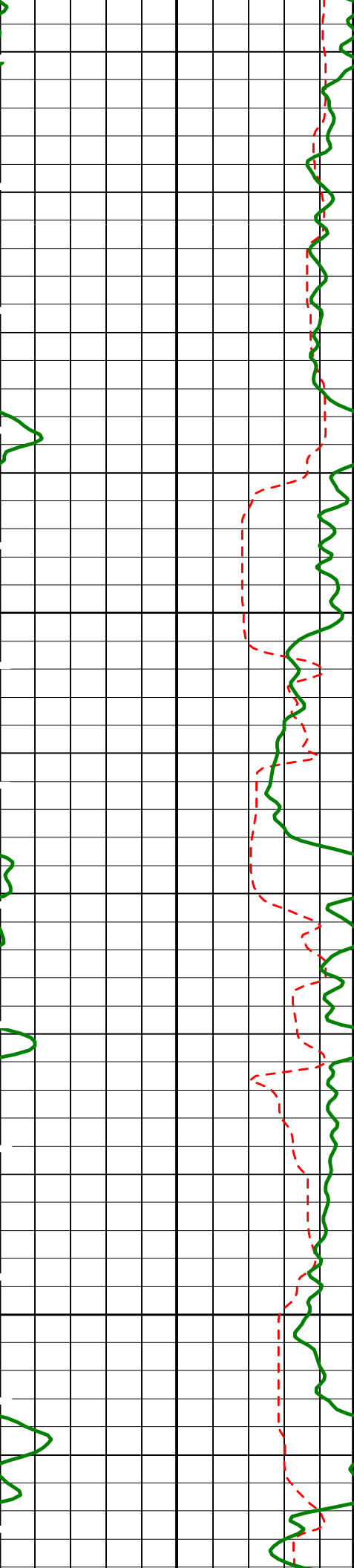
DIT-E	10C0-306	HLDT-A	10C0-306
DTA-A	10C0-306	NPLC-B	10C0-306
APS-BA	10C0-306	HNGS-BA	10C0-306
SGT-N	10C0-306	DTC-H	10C0-306

PIP SUMMARY

Time Mark Every 60 S

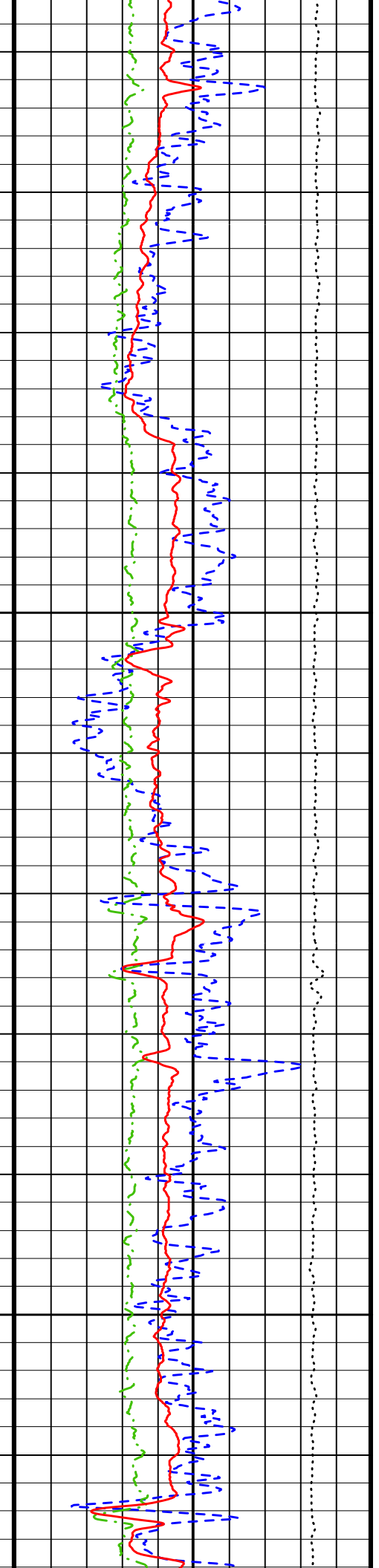
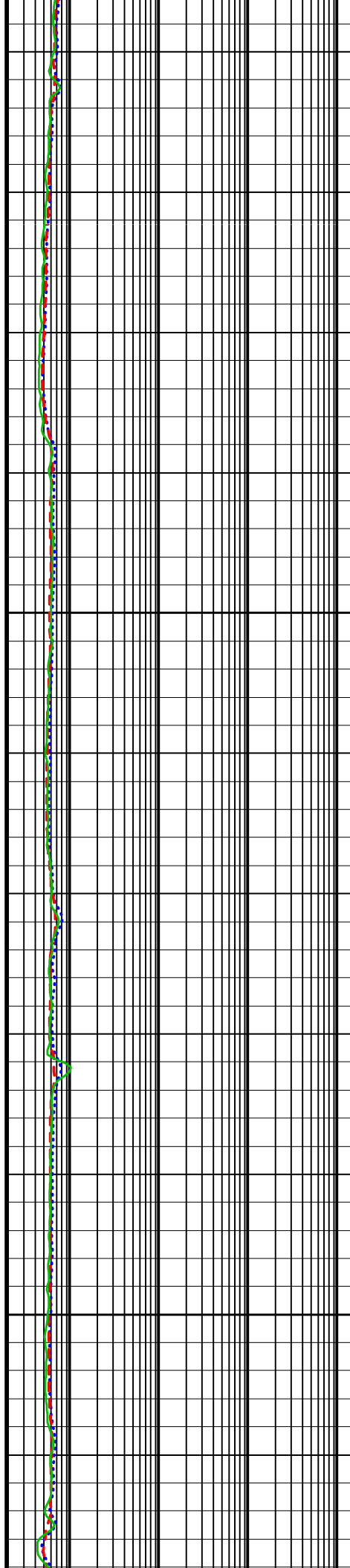


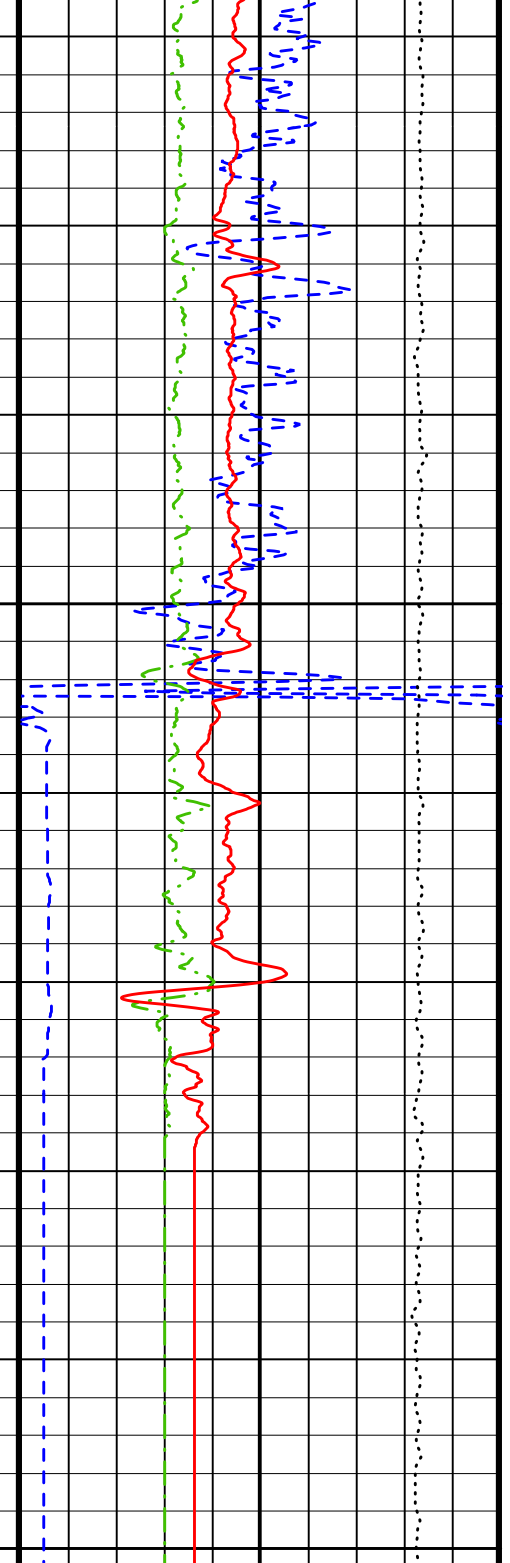
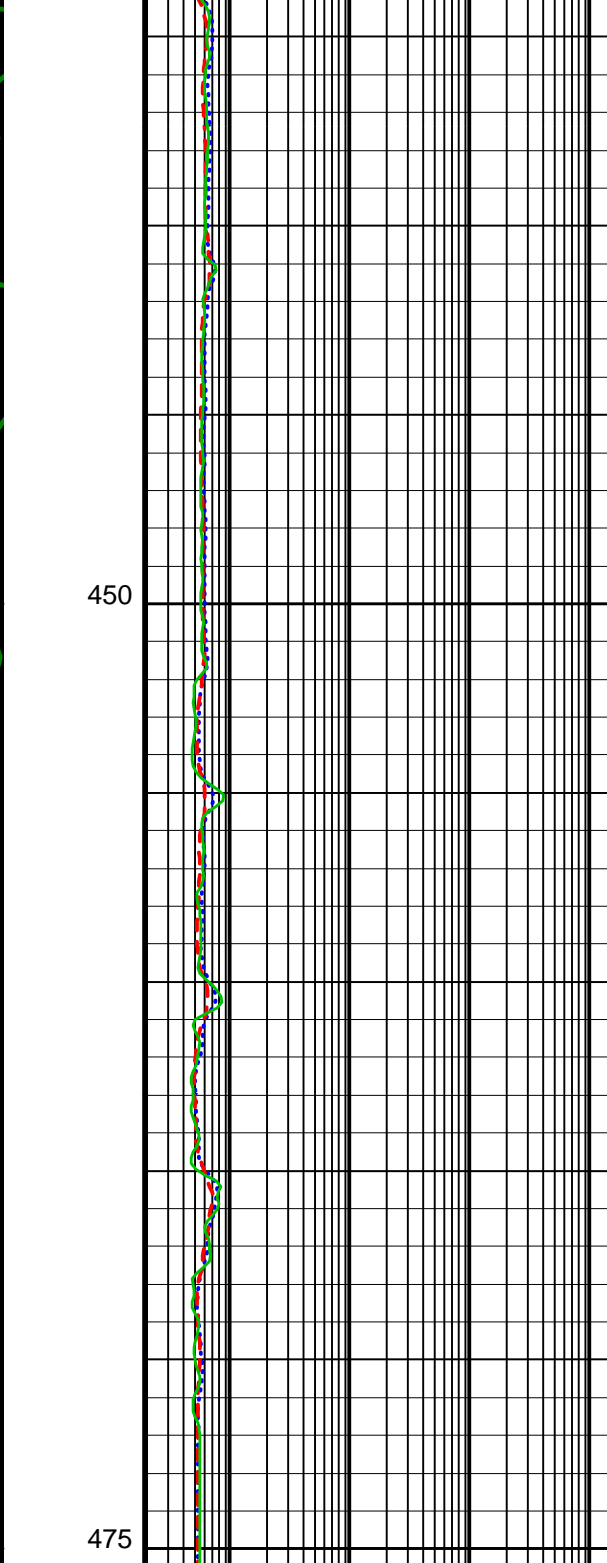
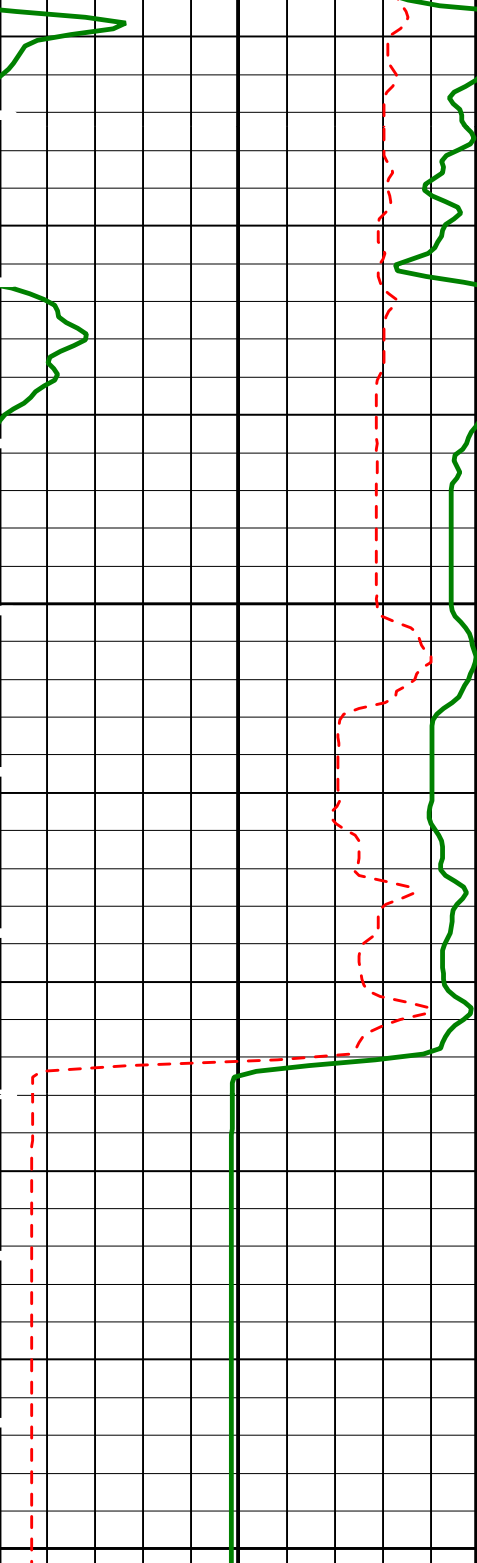




400

425





Caliper (CALI) (IN)	0	20
HNGS Spectroscopy Gamma Ray (GAPI)	0	100

Medium Induction Phasor-processed Resistivity (IMPH) (OHMM)	0.2	2000
Deep Induction Phasor-processed Resistivity (IDPH) (OHMM)	0.2	2000
SFL Unaveraged (SFLU) (OHMM)	0.2	2000

APS HR Near/Array Corrected Limestone Porosity (HALC) (PU)	100	0
HiRes PhotoElectric Factor (HPEF) (---)	0	10
HiRes Bulk Density (HRHO) (G/C3)	1	3

REPEAT SECTION

Tension (TENS) (LBF)	10000	0
-------------------------	-------	---

PIP SUMMARY

Time Mark Every 60 S

Parameters

DLIS Name	Description	Value	
DIT-E: Dual Induction - E			
BHS	Borehole Status	OPEN	
BHT	Bottom Hole Temperature (used in calculations)	40	DEGF
DGF2	Deep 20 kHz Gain Factor	1.00789	
DPH2	Deep 20 kHz Phase Shift	-0.152394	DEG
DRE2	Deep Real 20 kHz Sonde Error Correction	16.357	MM/M
DSR2	Deep Sigma Reference (20 kHz)	1843	MM/M
DXE2	Deep Quad 20 kHz Sonde Error Correction	64.6326	MM/M
GCSE	Generalized Caliper Selection	CALI	
GDEV	Average Angular Deviation of Borehole from Normal	0	DEG
GGRD	Geothermal Gradient	0.01	DF/F
GTSE	Generalized Temperature Selection	LINEAR_ESTIMATE	
IFRS	DIT-E Induction Frequency Selector	20	
IPHA	DIT-E Phasor Processing Mode	ALL	
IPRO	DIT-E Induction Processing Selector	PHASOR	
ITEN	DIT-E Temperature Enable	ENABLE	
MGF2	Medium 20 kHz Gain Factor	1.02964	
MPH2	Medium 20 kHz Phase Shift	-0.933067	DEG
MRE2	Medium Real 20 kHz Sonde Error Correction	-1.78642	MM/M
MSR2	Medium Sigma Reference (20 kHz)	3250	MM/M
MXE2	Medium Quad 20 kHz Sonde Error Correction	-34.2041	MM/M
SFCR	SFL Channel Ratio	1000	
SHT	Surface Hole Temperature	68	DEGF
HLDT-A: Hostile Environment Litho Density - A			
DHC	Density Hole Correction	BS	
DPPM	Density Porosity Processing Mode	HIRS	
QPPS	Quicklook Processing Pe Select	PEFL	
WMUD	Mud Weight	1.07	G/C3
APS-BA: Accelerator-Porosity Tool			
AASD	APS Software Version	5	
ABOS	APS Thermal and Array Detectors High Voltage Setting	1968.98	V
ADSO	APS Neutron Burst-Off Background Subtraction Switch	ON	
AFSD	APS Array Detectors Data Source Switch	Both	
AHCS	APS Far Detector High Voltage Setting	2052.03	V
AHSS	APS Holesize Correction Source	GCSE	
AMTY	APS Holesize Correction Switch	ON	
ANSD	APS Environmental Corrections Mud Type	WaterBaseBarite	
ASOS	APS Near Detector High Voltage Setting	1748.3	V
ATSS	APS Standoff Correction Switch	ON	
BHS	APS Temperature-Pressure-Salinity Correction Switch	OFF	
BHT	Borehole Status	OPEN	
BHT	Bottom Hole Temperature (used in calculations)	40	DEGF
DPPM	Density Porosity Processing Mode	HIRS	
FSAL	Formation Salinity	-50000	PPM
GCSE	Generalized Caliper Selection	CALI	
GDEV	Average Angular Deviation of Borehole from Normal	0	DEG
GGRD	Geothermal Gradient	0.01	DF/F
GTSE	Generalized Temperature Selection	LINEAR_ESTIMATE	
NARC	APS Near/Array Calibration Ratio	1.0631	
NFRC	APS Near/Far Calibration Ratio	0.902243	
SHT	Surface Hole Temperature	68	DEGF
HNCS-BA: Hostile Natural Gamma Ray Sonde			
BAR1	HNCS Detector 1 Barite Constant	1	
BAR2	HNCS Detector 2 Barite Constant	1	
BHK	HNCS Borehole Potassium Correction Concentration	0	
BHS	Borehole Status	OPEN	
BHT	Bottom Hole Temperature (used in calculations)	40	DEGF
CSD1	Inner Casing Outer Diameter	0	IN
CSD2	Outer Casing Outer Diameter	0	IN
CSW1	Inner Casing Weight	0	LB/F
CSW2	Outer Casing Weight	0	LB/F
DBCC	HNCS Barite Constant Correction Flag	NONE	
GCSE	Generalized Caliper Selection	CALI	
GDEV	Average Angular Deviation of Borehole from Normal	0	DEG
GGRD	Geothermal Gradient	0.01	DF/F
GTSE	Generalized Temperature Selection	LINEAR_ESTIMATE	
H1P	HNCS Detector 1 Allow/Disallow In Processing	ALLOW	
H2P	HNCS Detector 2 Allow/Disallow In Processing	ALLOW	
HABK	HNCS Borehole Potassium Running Average	-0.00262782	
HALF	HNCS Alpha Filter Length	60	IN
HCRB	HNCS Apply Borehole Potassium Correction	NONE	
HMWM	Mud Weighting Material	NATU	
HNPE	HNCS Processing Enable	YES	
S1BI	HNCS Detector 1 Calibration Bismuth Count Rate	1.3	CPS
S2BI	HNCS Detector 2 Calibration Bismuth Count Rate	1.3	CPS
SGRC	HNCS Standard Gamma-Ray Correction Flag	YES	
SHT	Surface Hole Temperature	68	DEGF
TPOS	Tool Position	ECCE	
VBA1	HNCS Detector 1 Variable Barite Factor Running Average	0.963907	
VBA2	HNCS Detector 2 Variable Barite Factor Running Average	0.979587	
SGT-N: Scintillation Gamma-Ray - N			

BHS	Borehole Status	OPEN	
BHT	Bottom Hole Temperature (used in calculations)	40	DEGF
DPPM	Density Porosity Processing Mode	HIRS	
GCSE	Generalized Caliper Selection	CALI	
GDEV	Average Angular Deviation of Borehole from Normal	0	DEG
GGRD	Geothermal Gradient	0.01	DF/F
GTSE	Generalized Temperature Selection	LINEAR_ESTIMATE	
SHT	Surface Hole Temperature	68	DEGF
HOLEV: Integrated Hole/Cement Volume			
BHS	Borehole Status	OPEN	
BHT	Bottom Hole Temperature (used in calculations)	40	DEGF
GCSE	Generalized Caliper Selection	CALI	
GDEV	Average Angular Deviation of Borehole from Normal	0	DEG
GGRD	Geothermal Gradient	0.01	DF/F
GTSE	Generalized Temperature Selection	LINEAR_ESTIMATE	
SHT	Surface Hole Temperature	68	DEGF
System and Miscellaneous			
BS	Bit Size	11.438	IN
BSAL	Borehole Salinity	-50000.00	PPM
CSIZ	Current Casing Size	0.000	IN
CWEI	Casing Weight	0.00	LB/F
DFD	Drilling Fluid Density	1.07	G/C3
TD	Total Depth	-50000	FT

Format: HLDT_HR_TCOM Vertical Scale: 1:200 Graphics File Created: 05-Mar-2002 21:13

OP System Version: 10C0-306 MCM

DIT-E	10C0-306	HLDT-A	10C0-306
DTA-A	10C0-306	NPLC-B	10C0-306
APS-BA	10C0-306	HNGS-BA	10C0-306
SGT-N	10C0-306	DTC-H	10C0-306

Output DLIS Files

DEFAULT	PI_LDL_APS_NGS_006LUP	FN:8	PRODUCER	05-Mar-2002 21:13
REDUCE	PI_LDL_APS_NGS_006LUP	FN:9	PRODUCER	05-Mar-2002 21:13

Company: Lamont Doherty

Schlumberger

Well: ODP Leg 201, Site 1228A PRU-2A

Field: Peru Margin

Rig: JOIDES Resolution

Ocean: Pacific

IPLT Triple Combo
with Phasor Induction