

DISCLAIMER

THE USE OF AND RELIANCE UPON THIS RECORDED-DATA BY THE HEREIN NAMED COMPANY (AND ANY OF ITS AFFILIATES, PARTNERS, REPRESENTATIVES, AGENTS, CONSULTANTS AND EMPLOYEES) IS SUBJECT TO THE TERMS AND CONDITIONS AGREED UPON BETWEEN SCHLUMBERGER AND THE COMPANY, INCLUDING: (a) RESTRICTIONS ON USE OF THE RECORDED-DATA; (b) DISCLAIMERS AND WAIVERS OF WARRANTIES AND REPRESENTATIONS REGARDING COMPANY'S USE OF AND RELIANCE UPON THE RECORDED-DATA; AND (c) CUSTOMER'S FULL AND SOLE RESPONSIBILITY FOR ANY INFERENCE DRAWN OR DECISION MADE IN CONNECTION WITH THE USE OF THIS RECORDED-DATA.






OTHER SERVICES1 OS1: DITE OS2: SGTN OS3: OS4: OS5:	OTHER SERVICES2 OS1: OS2: OS3: OS4: OS5:
---	---

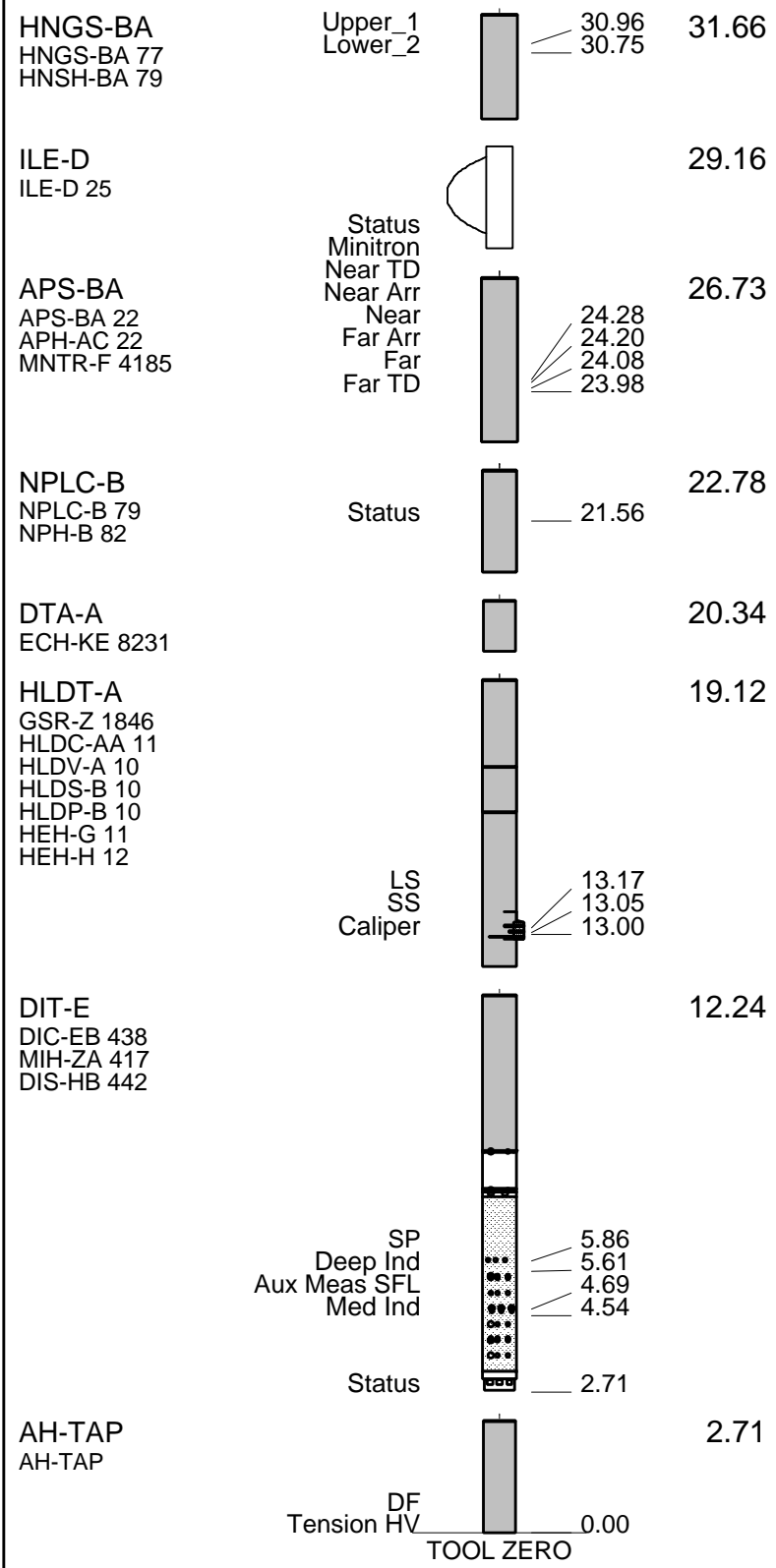
REMARKS: RUN NUMBER 1 Hole cored with APC, PCS. Log presented in meters below rig floor. Lamont Temperature tool (TAP) was run on Triple Combo. Wireline Heave Compensator (WHC) was used on all descents. Sepiolite mud was used to displace the hole during the wiper trip after drilling Drillers TD 350 mbrf, Driller pipe depth: 231 mbrf, Sea Floor: 164 mbrf. Drill Pipe Schlumberger 233 mbrf. Sea Floor Schlumberger 164 mbrf. Software bug shows APS calibration not done for part of calibration. Low background countrate on HNGS master calibration signifies a weak internal source used for check of detector and not used in calibration. High background countrate for APS before check most likely due to pipe vibration. After Cal for HLDT and HNGS not performed to minimize exposure to vibration in pipe.	REMARKS: RUN NUMBER 2
---	-----------------------

RUN 1			RUN 2		
SERVICE ORDER #:			SERVICE ORDER #:		
PROGRAM VERSION:	10C0-306		PROGRAM VERSION:		
FLUID LEVEL:			FLUID LEVEL:		
LOGGED INTERVAL	START	STOP	LOGGED INTERVAL	START	STOP

EQUIPMENT DESCRIPTION

RUN 1		RUN 2	
SURFACE EQUIPMENT			
SFT-281 24	WITM (DTS)-A		
SFT-178 4722			
GSR-U 135			
GSR-U/Y			

DOWNHOLE EQUIPMENT			
LEH-QT			35.14
LEH-QT 1726			
DTC-H	CTEM		33.98
ECH-KC 9343	TelStatus		34.25
	ToolStatu		33.34
SGT-N	Gamma Ray		33.06
SGH-K 2448			
SCC TR 0582			



TOOL ZERO

MAXIMUM STRING DIAMETER 3.88 IN
 MEASUREMENTS RELATIVE TO TOOL ZERO
 ALL LENGTHS IN METERS

Input DLIS Files

DEFAULT PI_LDL_APS_NGS_006LUP FN:7 PRODUCER 08-Mar-2002 11:20 349.8 M 144.0 M

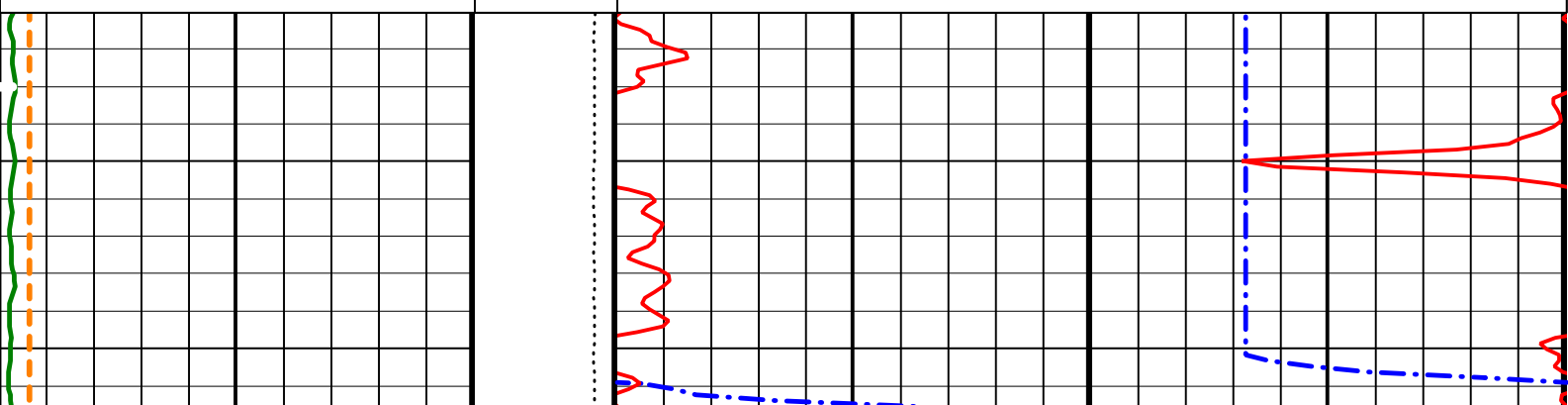
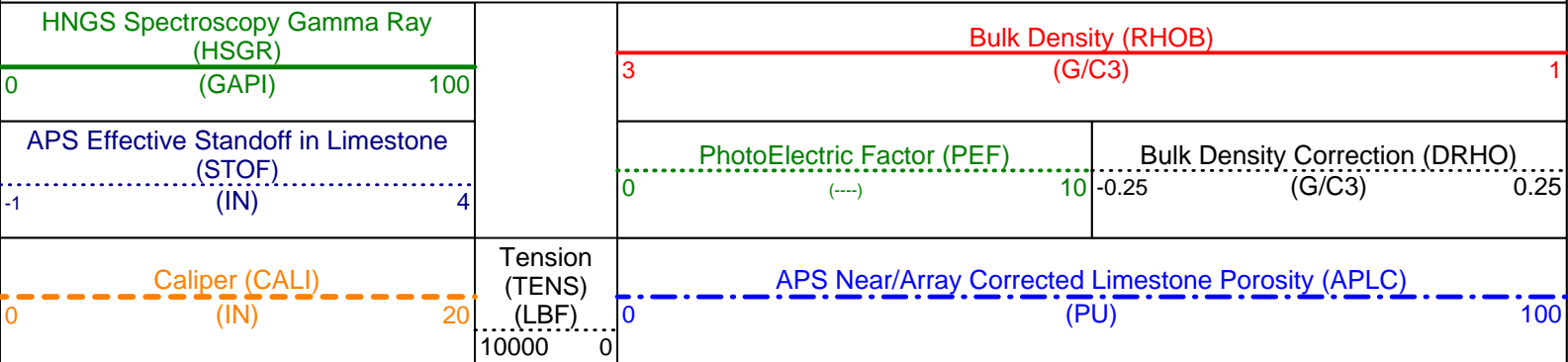
OP System Version: 10C0-306 MCM

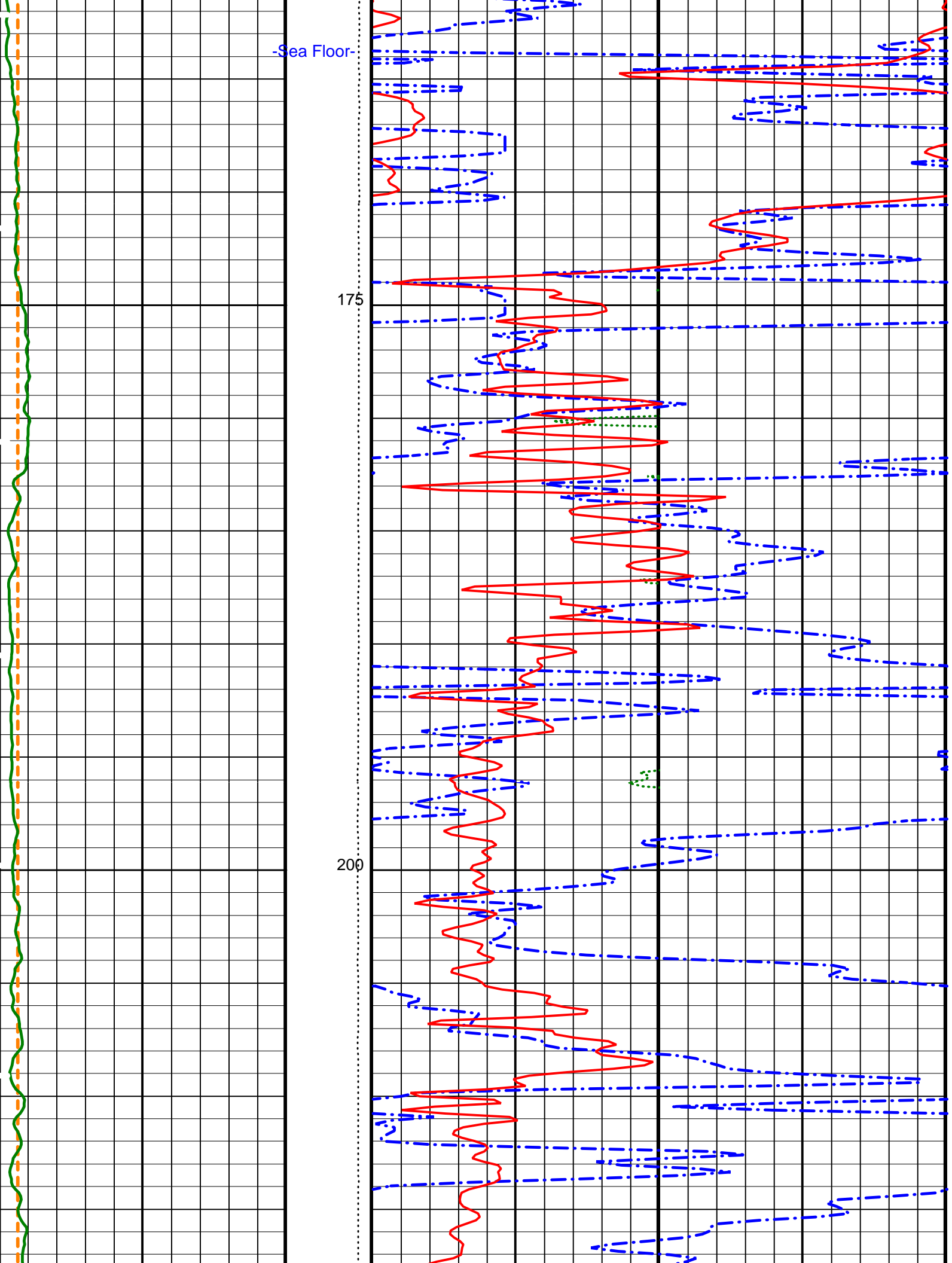
DIT-E	10C0-306	HLDT-A	10C0-306
DTA-A	10C0-306	NPLC-B	10C0-306
APS-BA	10C0-306	HNGS-BA	10C0-306
SGT-N	10C0-306	DTC-H	10C0-306

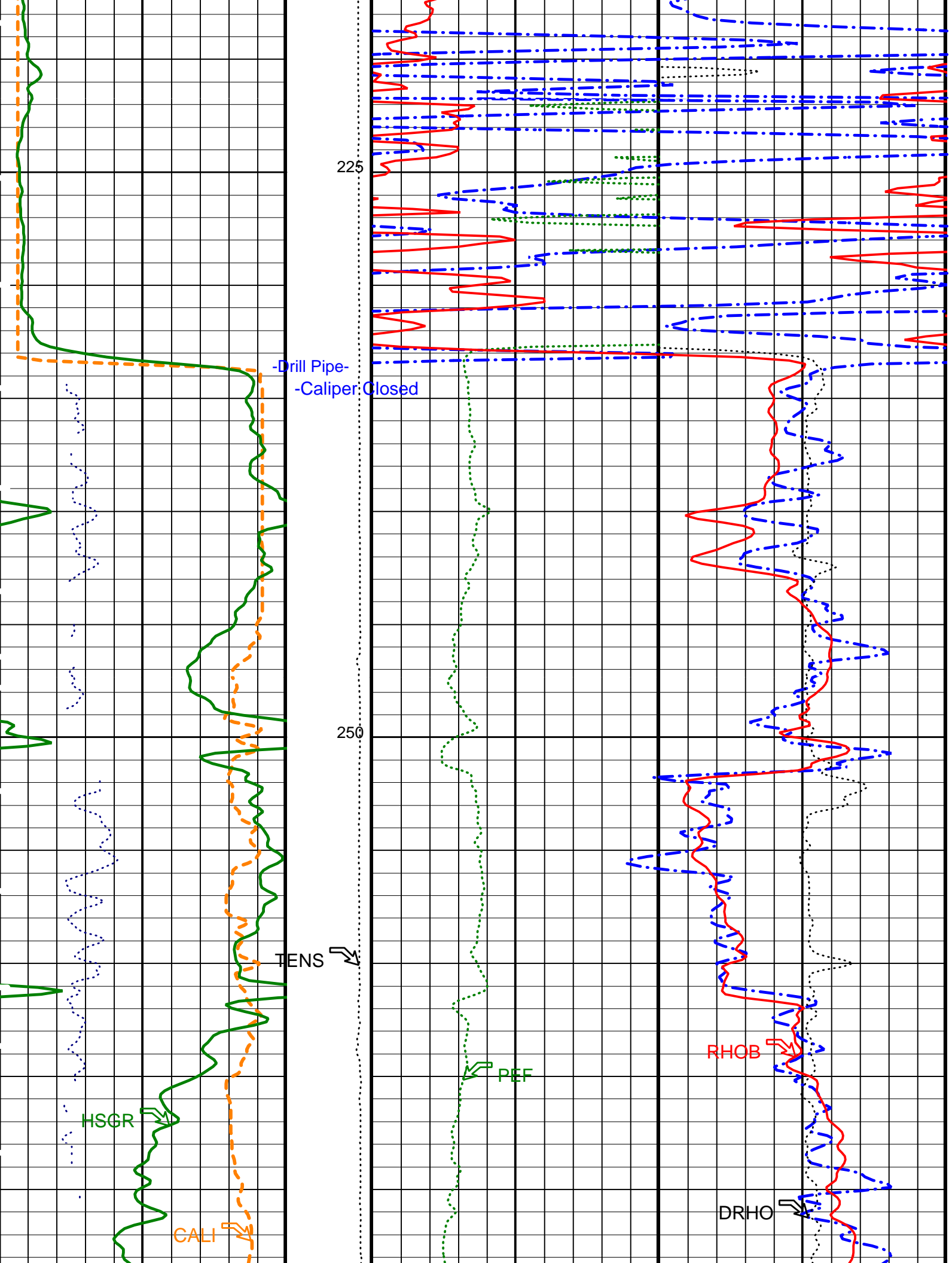
PIP SUMMARY

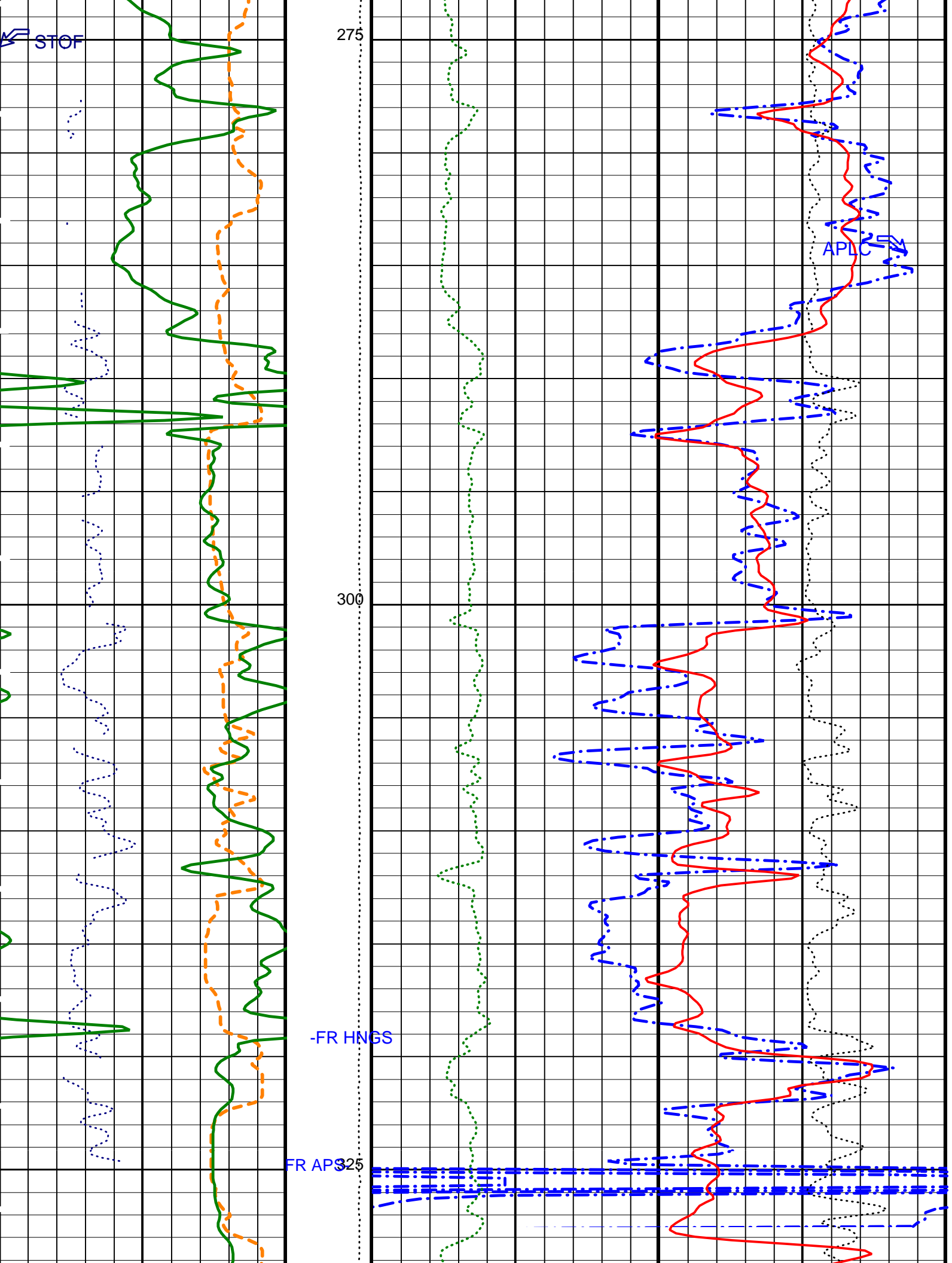
Main Pass

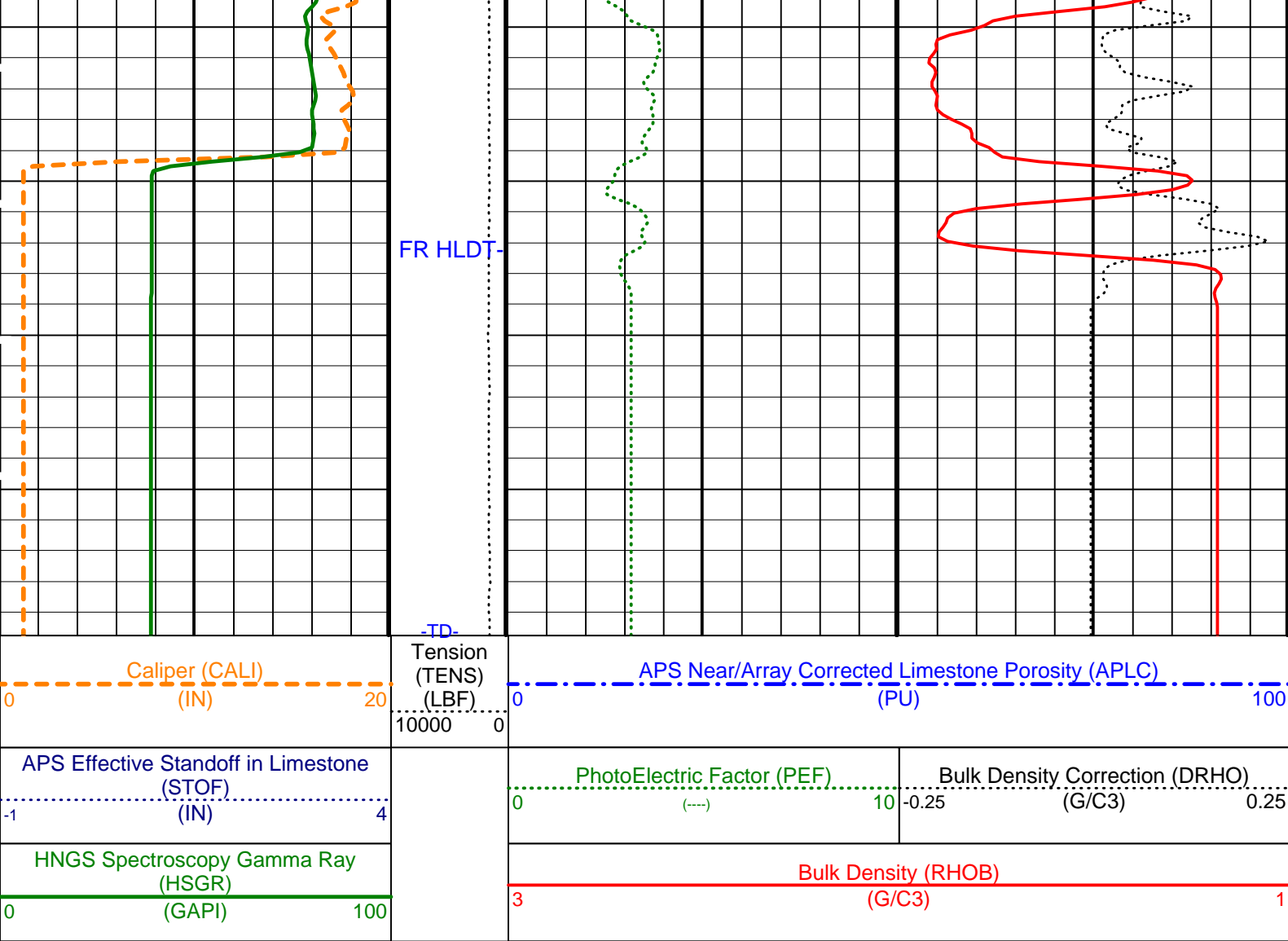
▶ Time Mark Every 60 S











Time Mark Every 60 S Main Pass PIP SUMMARY

Parameters

DLIS Name	Description	Value	
DIT-E: Dual Induction - E			
BHS	Borehole Status	OPEN	
BHT	Bottom Hole Temperature (used in calculations)	40	DEGF
DGF1	Deep 10 kHz Gain Factor	0.995593	
DGF2	Deep 20 kHz Gain Factor	1.00789	
DGF4	Deep 40 kHz Gain Factor	1.02614	
DPH1	Deep 10 kHz Phase Shift	0.114289	DEG
DPH2	Deep 20 kHz Phase Shift	-0.152394	DEG
DPH4	Deep 40 kHz Phase Shift	-1.42629	DEG
DRE1	Deep Real 10 kHz Sonde Error Correction	44.9501	MM/M
DRE2	Deep Real 20 kHz Sonde Error Correction	16.357	MM/M
DRE4	Deep Real 40 kHz Sonde Error Correction	4.69026	MM/M
DRIM	DIT-E Radial Invasion Mode	Rxo>Rt	
DSR1	Deep Sigma Reference (10 kHz)	7637	MM/M
DSR2	Deep Sigma Reference (20 kHz)	1843	MM/M
DSR4	Deep Sigma Reference (40 kHz)	405	MM/M
DSTA	DIT-E Transversal Standoff	0	IN
DXE1	Deep Quad 10 kHz Sonde Error Correction	108.903	MM/M
DXE2	Deep Quad 20 kHz Sonde Error Correction	64.6326	MM/M
DXE4	Deep Quad 40 kHz Sonde Error Correction	46.096	MM/M
GCSE	Generalized Caliper Selection	CALI	
GDEV	Average Angular Deviation of Borehole from Normal	0	DEG
GGRD	Geothermal Gradient	0.01	DF/F
GRSE	Generalized Mud Resistivity Selection	CHART_GEN_9	
GTSE	Generalized Temperature Selection	LINEAR_ESTIMATE	
IFRS	DIT-E Induction Frequency Selector	20	
IPHA	DIT-E Phasor Processing Mode	ALL	
IPRO	DIT-E Induction Processing Selector	PHASOR	
ITEN	DIT-E Temperature Enable	ENABLE	
MATP	Rock Matrix for Neutron Porosity Corrections	LIMESTONE	

MATR	Rock Matrix for Neutron Porosity Corrections	LIMESTONE	
MGF1	Medium 10 kHz Gain Factor	1.02182	
MGF2	Medium 20 kHz Gain Factor	1.02964	
MGF4	Medium 40 kHz Gain Factor	1.06122	
MPH1	Medium 10 kHz Phase Shift	-0.255819	DEG
MPH2	Medium 20 kHz Phase Shift	-0.933067	DEG
MPH4	Medium 40 kHz Phase Shift	-2.46117	DEG
MRE1	Medium Real 10 kHz Sonde Error Correction	20.7292	MM/M
MRE2	Medium Real 20 kHz Sonde Error Correction	-1.78642	MM/M
MRE4	Medium Real 40 kHz Sonde Error Correction	-10.4594	MM/M
MSR1	Medium Sigma Reference (10 kHz)	13520	MM/M
MSR2	Medium Sigma Reference (20 kHz)	3250	MM/M
MSR4	Medium Sigma Reference (40 kHz)	685	MM/M
MXE1	Medium Quad 10 kHz Sonde Error Correction	-105.752	MM/M
MXE2	Medium Quad 20 kHz Sonde Error Correction	-34.2041	MM/M
MXE4	Medium Quad 40 kHz Sonde Error Correction	11.4521	MM/M
SBR	Shoulder Bed Resistivity Factor	1	OHMM
SFCR	SFL Channel Ratio	1000	
SFLE	SFL Enable	ENABLE	
SHT	Surface Hole Temperature	68	DEGF
SPAE	DIT-E SPARC Processing Enable	ENABLE	
SPNV	SP Next Value	0	MV
HLDT-A: Hostile Environment Litho Density - A			
BFM	Borehole Fluid Medium	LIQUID	
DHC	Density Hole Correction	BS	
DPPM	Density Porosity Processing Mode	HIRS	
FD	Fluid Density	1	G/C3
LSHC	LS Hardware Loop Control	DISALLOW	
MDEN	Matrix Density	2.71	G/C3
QPPS	Quicklook Processing Pe Select	PEFL	
SSHC	SS Hardware Loop Control	DISALLOW	
WMUD	Mud Weight	1.07	G/C3
NPLC-B: Nuclear Porosity Lithology Cartridge - B			
NOTS	NPLC Old Temperature Sensor	NO	
APS-BA: Accelerator-Porosity Tool			
	APS Software Version	0	
AASD	APS Thermal and Array Detectors High Voltage Setting	1968.98	V
ABOS	APS Neutron Burst-Off Background Subtraction Switch	ON	
ADSO	APS Array Detectors Data Source Switch	Both	
AFSD	APS Far Detector High Voltage Setting	2052.03	V
AHCS	APS Holesize Correction Source	GCSE	
AHSS	APS Holesize Correction Switch	ON	
AMTY	APS Environmental Corrections Mud Type	WaterBaseBarite	
ANSD	APS Near Detector High Voltage Setting	1748.3	V
AOTS	APS Old Temperature Sensor Switch	NO	
ASOS	APS Standoff Correction Switch	ON	
ATSS	APS Temperature-Pressure-Salinity Correction Switch	OFF	
BHS	Borehole Status	OPEN	
BHT	Bottom Hole Temperature (used in calculations)	40	DEGF
DPPM	Density Porosity Processing Mode	HIRS	
FSAL	Formation Salinity	-50000	PPM
GCSE	Generalized Caliper Selection	CALI	
GDEV	Average Angular Deviation of Borehole from Normal	0	DEG
GGRD	Geothermal Gradient	0.01	DF/F
GRSE	Generalized Mud Resistivity Selection	CHART_GEN_9	
GTSE	Generalized Temperature Selection	LINEAR_ESTIMATE	
MATR	Rock Matrix for Neutron Porosity Corrections	LIMESTONE	
NARC	APS Near/Array Calibration Ratio	1.0631	
NFRC	APS Near/Far Calibration Ratio	0.902243	
SHT	Surface Hole Temperature	68	DEGF
HNGS-BA: Hostile Natural Gamma Ray Sonde			
BAR1	HNGS Detector 1 Barite Constant	1	
BAR2	HNGS Detector 2 Barite Constant	1	
BHK	HNGS Borehole Potassium Correction Concentration	0	
BHS	Borehole Status	OPEN	
BHT	Bottom Hole Temperature (used in calculations)	40	DEGF
CSD1	Inner Casing Outer Diameter	0	IN
CSD2	Outer Casing Outer Diameter	0	IN
CSW1	Inner Casing Weight	0	LB/F
CSW2	Outer Casing Weight	0	LB/F
DBCC	HNGS Barite Constant Correction Flag	NONE	
GCSE	Generalized Caliper Selection	CALI	
GDEV	Average Angular Deviation of Borehole from Normal	0	DEG
GGRD	Geothermal Gradient	0.01	DF/F
GRSE	Generalized Mud Resistivity Selection	CHART_GEN_9	
GTSE	Generalized Temperature Selection	LINEAR_ESTIMATE	
H1P	HNGS Detector 1 Allow/Disallow In Processing	ALLOW	
H2P	HNGS Detector 2 Allow/Disallow In Processing	ALLOW	
HABK	HNGS Borehole Potassium Running Average	-0.000128346	
HALF	HNGS Alpha Filter Length	60	IN
HCRB	HNGS Apply Borehole Potassium Correction	NONE	
HMWM	Mud Weighting Material	NATU	
HNPE	HNGS Processing Enable	YES	
MATR	Rock Matrix for Neutron Porosity Corrections	LIMESTONE	
S1BI	HNGS Detector 1 Calibration Bismuth Count Rate	1.3	CPS

S2BI	HNGS Detector 2 Calibration Bismuth Count Rate	1.3	CPS
SGRC	HNGS Standard Gamma-Ray Correction Flag	YES	
SHT	Surface Hole Temperature	68	DEGF
TPOS	Tool Position	ECCE	
VBA1	HNGS Detector 1 Variable Barite Factor Running Average	0.972261	
VBA2	HNGS Detector 2 Variable Barite Factor Running Average	0.978066	
SGT-N: Scintillation Gamma-Ray - N			
BHS	Borehole Status	OPEN	
BHT	Bottom Hole Temperature (used in calculations)	40	DEGF
DPPM	Density Porosity Processing Mode	HIRS	
GCSE	Generalized Caliper Selection	CALI	
GDEV	Average Angular Deviation of Borehole from Normal	0	DEG
GGRD	Geothermal Gradient	0.01	DF/F
GRSE	Generalized Mud Resistivity Selection	CHART_GEN_9	
GTSE	Generalized Temperature Selection	LINEAR_ESTIMATE	
ISSBAR	SGT Nuclear Mud Type	NOBARITE	
MATR	Rock Matrix for Neutron Porosity Corrections	LIMESTONE	
SHT	Surface Hole Temperature	68	DEGF
SOGR	SGT Standoff Distance	0	IN
HOLEV: Integrated Hole/Cement Volume			
BHS	Borehole Status	OPEN	
BHT	Bottom Hole Temperature (used in calculations)	40	DEGF
FCD	Future Casing (Outer) Diameter	0	IN
GCSE	Generalized Caliper Selection	CALI	
GDEV	Average Angular Deviation of Borehole from Normal	0	DEG
GGRD	Geothermal Gradient	0.01	DF/F
GRSE	Generalized Mud Resistivity Selection	CHART_GEN_9	
GTSE	Generalized Temperature Selection	LINEAR_ESTIMATE	
HVCS	Integrated Hole Volume Caliper Selection	AUTOMATIC	
MATR	Rock Matrix for Neutron Porosity Corrections	LIMESTONE	
SHT	Surface Hole Temperature	68	DEGF
System and Miscellaneous			
ALTDPCCHAN	Name of alternate depth channel	SpeedCorrectedDepth	
BS	Bit Size	11.438	IN
BSAL	Borehole Salinity	-50000.00	PPM
CSIZ	Current Casing Size	0.000	IN
CWEI	Casing Weight	0.00	LB/F
DFD	Drilling Fluid Density	1.07	G/C3
DO	Depth Offset for Playback	0.0	M
MST	Mud Sample Temperature	33.00	DEGC
PBVSADP	Use alternate depth channel for playback	NO	
PP	Playback Processing	NORMAL	
RMFS	Resistivity of Mud Filtrate Sample	-50000.0000	OHMM
RW	Resistivity of Connate Water	1.0000	OHMM
TD	Total Depth	1158	FT
TDD	Total Depth - Driller	-50000.00	M
TDL	Total Depth - Logger	-50000.00	M
TWS	Temperature of Connate Water Sample	37.78	DEGC

Format: APSLiquidPorosity_1 Vertical Scale: 1:200 Graphics File Created: 10-Mar-2002 12:01

OP System Version: 10C0-306

MCM

DIT-E	10C0-306	HLDT-A	10C0-306
DTA-A	10C0-306	NPLC-B	10C0-306
APS-BA	10C0-306	HNGS-BA	10C0-306
SGT-N	10C0-306	DTC-H	10C0-306

Input DLIS Files

DEFAULT	PI_LDL_APS_NGS_006LUP	FN:7	PRODUCER	08-Mar-2002 11:20	349.8 M	144.0 M
---------	-----------------------	------	----------	-------------------	---------	---------

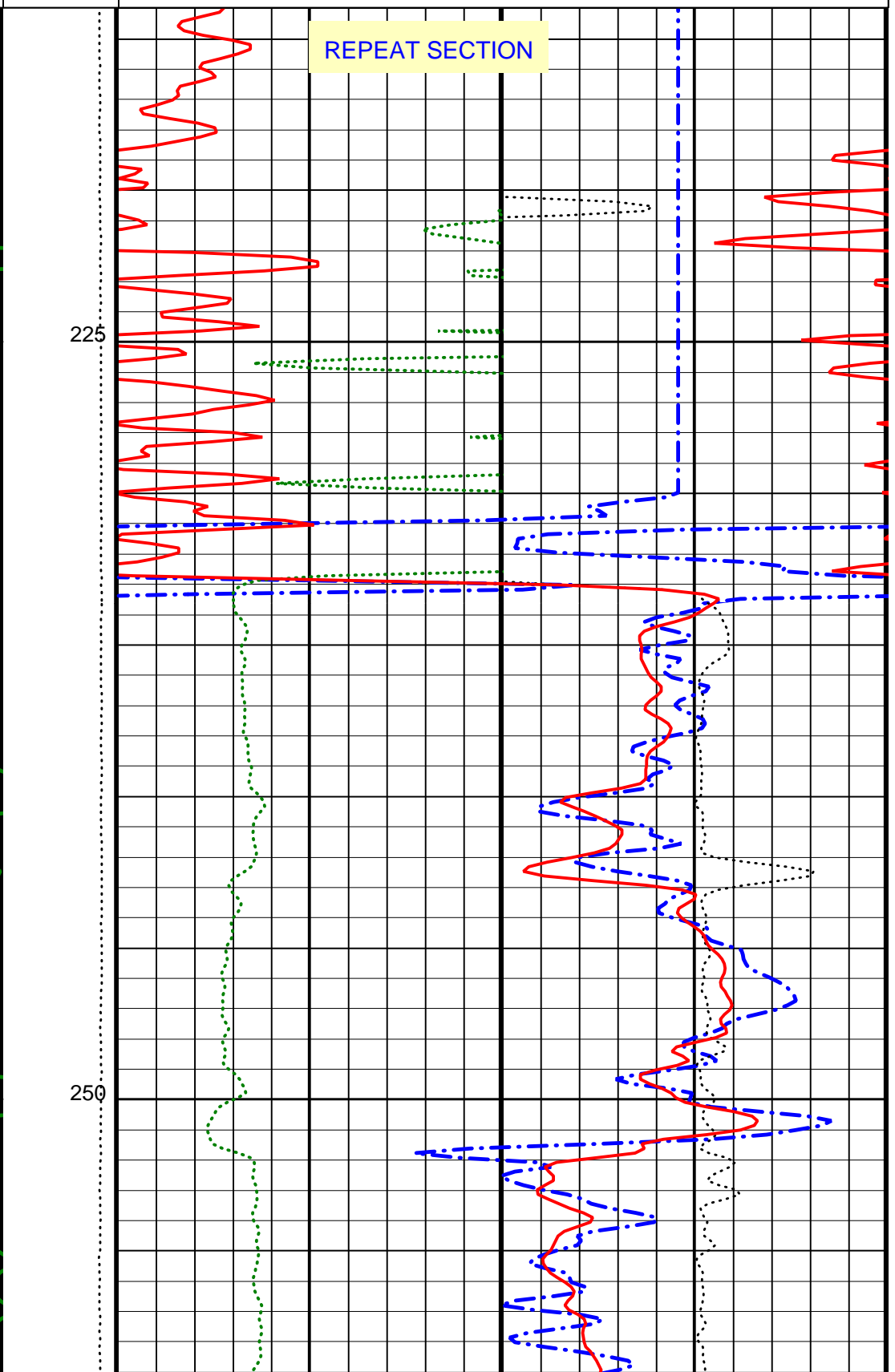
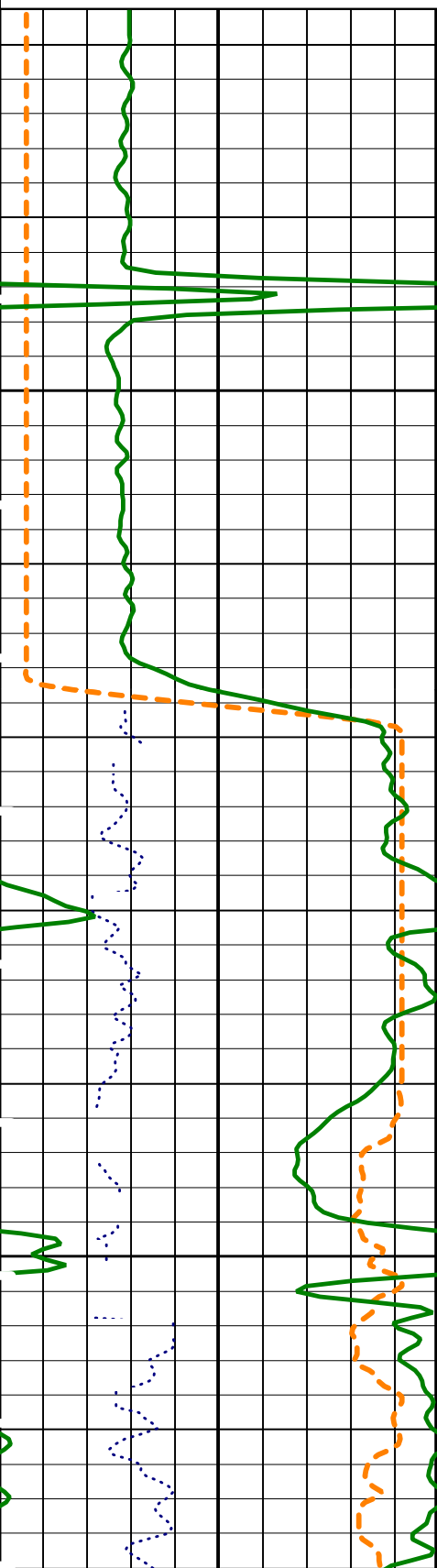
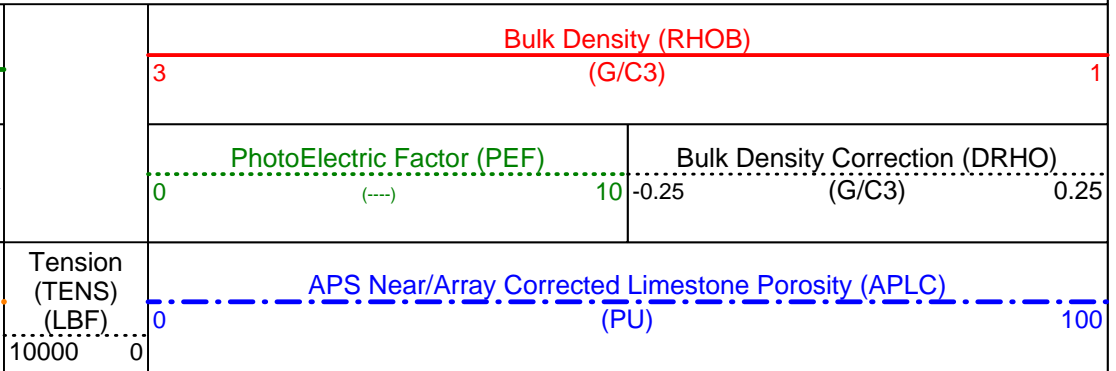
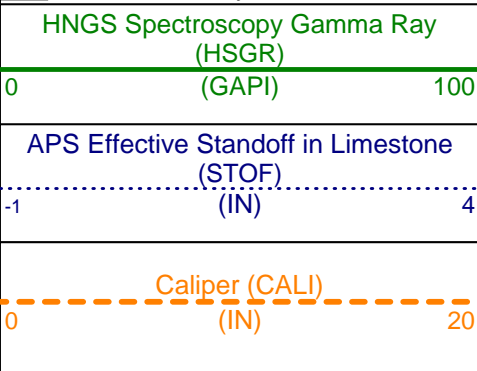
Output DLIS Files

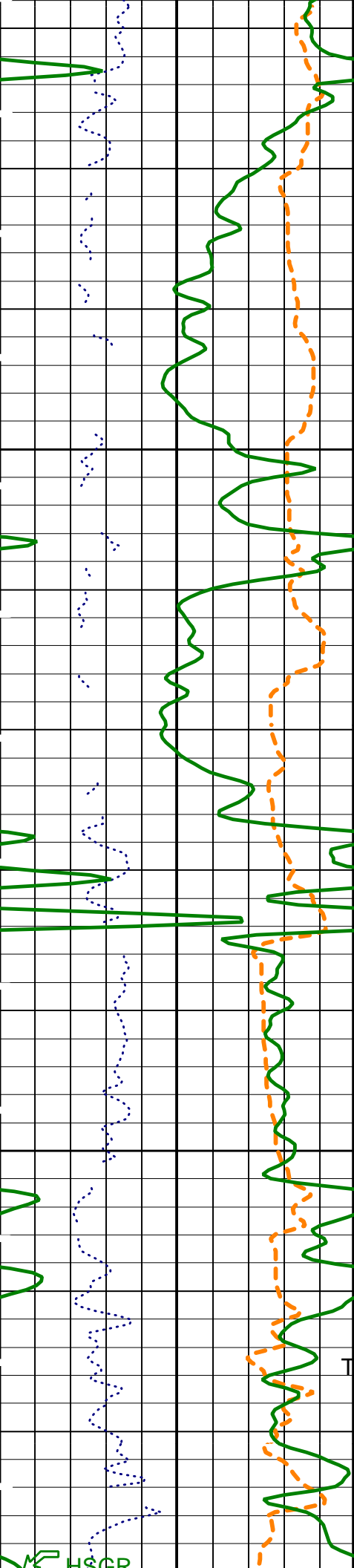
DEFAULT	PI_LDL_APS_NGS_007LUP	FN:9	PRODUCER	08-Mar-2002 12:07	349.8 M	214.0 M
REDUCE	PI_LDL_APS_NGS_007LUP	FN:10	PRODUCER	08-Mar-2002 12:07	349.8 M	214.0 M

OP System Version: 10C0-306

MCM

DIT-E	10C0-306	HLDT-A	10C0-306
DTA-A	10C0-306	NPLC-B	10C0-306
APS-BA	10C0-306	HNGS-BA	10C0-306
SGT-N	10C0-306	DTC-H	10C0-306

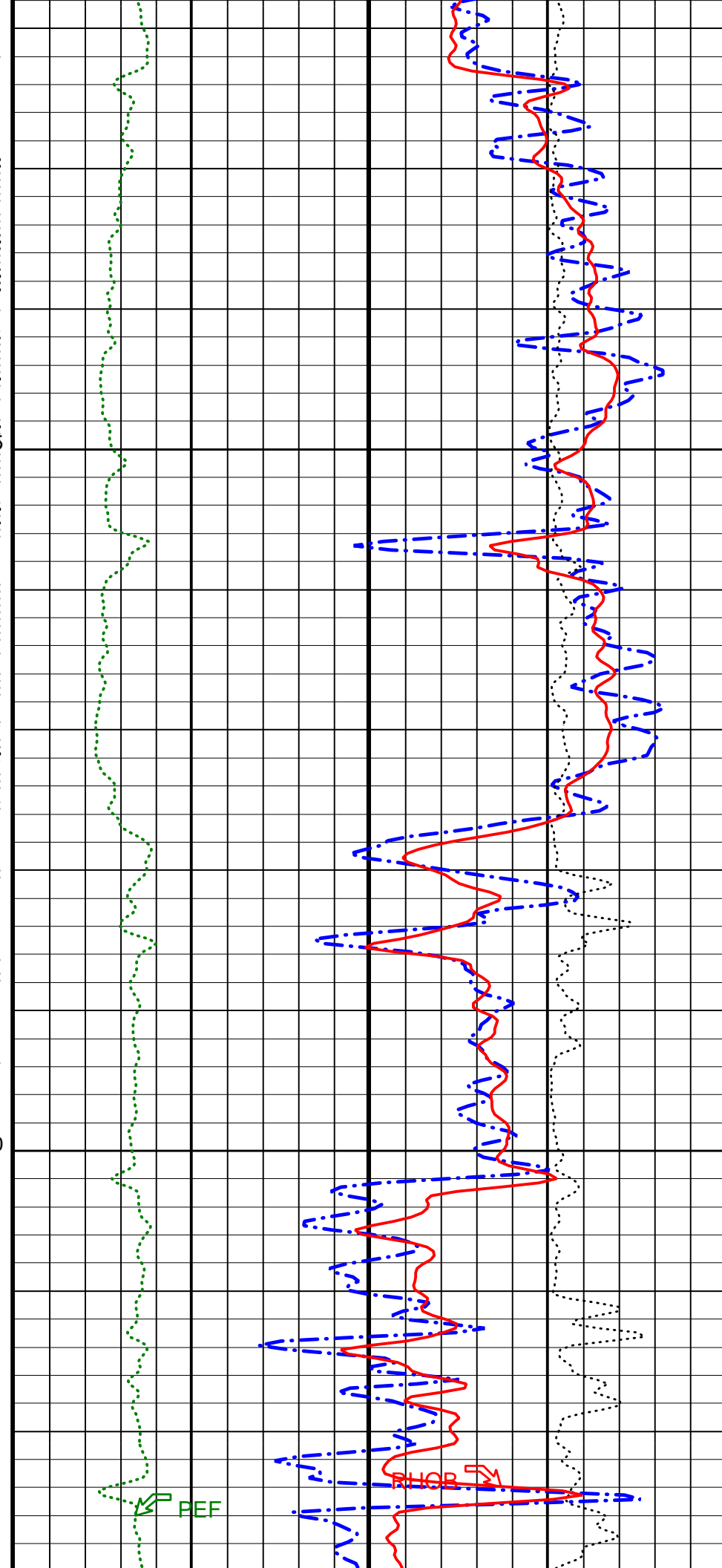




275

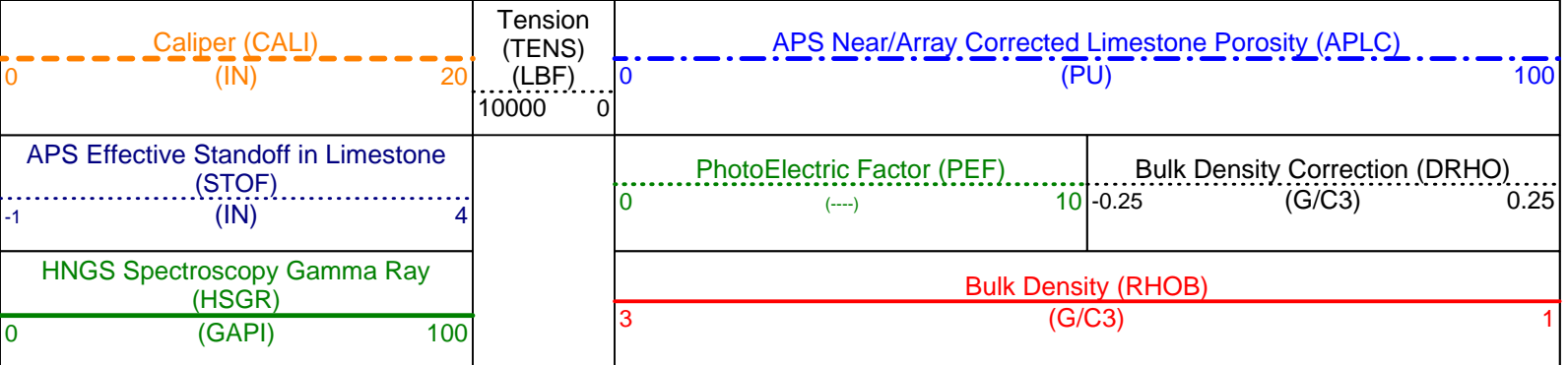
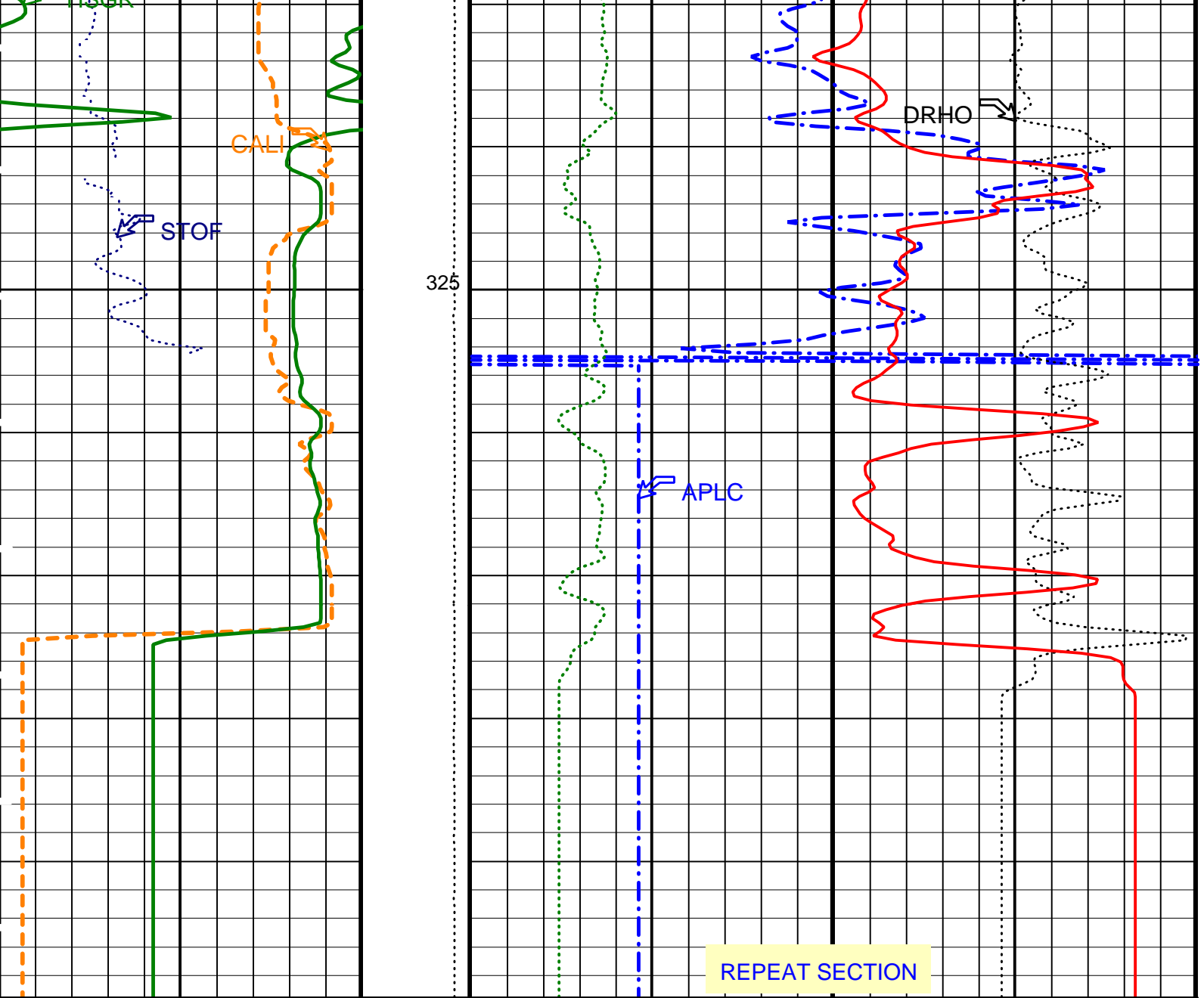
300

TENS →



PEF →

RHOP →



PIP SUMMARY

Time Mark Every 60 S

Parameters

DLIS Name	Description	Value
DIT-E: Dual Induction - E		
BHS	Borehole Status	OPEN
BHT	Bottom Hole Temperature (used in calculations)	40 DEG
DPH2	Deep 20 kHz Phase Shift	-0.152394 DEG
DSR2	Deep Real 20 kHz Sonde Error Correction	16.357 MM/M
DXE2	Deep Quad 20 kHz Sonde Error Correction	64.6326 MM/M

GCSE	Generalized Caliper Selection	CALI	
GDEV	Average Angular Deviation of Borehole from Normal	0	DEG
GGRD	Geothermal Gradient	0.01	DF/F
GRSE	Generalized Mud Resistivity Selection	CHART_GEN_9	
GTSE	Generalized Temperature Selection	LINEAR_ESTIMATE	
IFRS	DIT-E Induction Frequency Selector	20	
IPHA	DIT-E Phasor Processing Mode	ALL	
IPRO	DIT-E Induction Processing Selector	PHASOR	
ITEN	DIT-E Temperature Enable	ENABLE	
MATR	Rock Matrix for Neutron Porosity Corrections	LIMESTONE	
MGF2	Medium 20 kHz Gain Factor	1.02964	
MPH2	Medium 20 kHz Phase Shift	-0.933067	DEG
MRE2	Medium Real 20 kHz Sonde Error Correction	-1.78642	MM/M
MSR2	Medium Sigma Reference (20 kHz)	3250	MM/M
MXE2	Medium Quad 20 kHz Sonde Error Correction	-34.2041	MM/M
SBR	Shoulder Bed Resistivity Factor	1	OHMM
SFCR	SFL Channel Ratio	1000	
SFLE	SFL Enable	ENABLE	
SHT	Surface Hole Temperature	68	DEGF
SPAE	DIT-E SPARC Processing Enable	ENABLE	
SPNV	SP Next Value	0	MV
	HLDT-A: Hostile Environment Litho Density - A		
BFM	Borehole Fluid Medium	LIQUID	
DHC	Density Hole Correction	BS	
DPPM	Density Porosity Processing Mode	HIRS	
FD	Fluid Density	1	G/C3
LSHC	LS Hardware Loop Control	DISALLOW	
MDEN	Matrix Density	2.71	G/C3
QPPS	Quicklook Processing Pe Select	PEFL	
SSHC	SS Hardware Loop Control	DISALLOW	
WMUD	Mud Weight	1.07	G/C3
	NPLC-B: Nuclear Porosity Lithology Cartridge - B		
NOTS	NPLC Old Temperature Sensor	NO	
	APS-BA: Accelerator-Porosity Tool		
	APS Software Version	5	
AASD	APS Thermal and Array Detectors High Voltage Setting	1968.98	V
ABOS	APS Neutron Burst-Off Background Subtraction Switch	ON	
ADSO	APS Array Detectors Data Source Switch	Both	
AFSD	APS Far Detector High Voltage Setting	2052.03	V
AHCS	APS Holesize Correction Source	GCSE	
AHSS	APS Holesize Correction Switch	ON	
AMTY	APS Environmental Corrections Mud Type	WaterBaseBarite	
ANSD	APS Near Detector High Voltage Setting	1748.3	V
AOTS	APS Old Temperature Sensor Switch	NO	
ASOS	APS Standoff Correction Switch	ON	
ATSS	APS Temperature-Pressure-Salinity Correction Switch	OFF	
BHS	Borehole Status	OPEN	
BHT	Bottom Hole Temperature (used in calculations)	40	DEGF
DPPM	Density Porosity Processing Mode	HIRS	
FSAL	Formation Salinity	-50000	PPM
GCSE	Generalized Caliper Selection	CALI	
GDEV	Average Angular Deviation of Borehole from Normal	0	DEG
GGRD	Geothermal Gradient	0.01	DF/F
GRSE	Generalized Mud Resistivity Selection	CHART_GEN_9	
GTSE	Generalized Temperature Selection	LINEAR_ESTIMATE	
MATR	Rock Matrix for Neutron Porosity Corrections	LIMESTONE	
NARC	APS Near/Array Calibration Ratio	1.0631	
NFRC	APS Near/Far Calibration Ratio	0.902243	
SHT	Surface Hole Temperature	68	DEGF
	HNGS-BA: Hostile Natural Gamma Ray Sonde		
BAR1	HNGS Detector 1 Barite Constant	1	
BAR2	HNGS Detector 2 Barite Constant	1	
BHK	HNGS Borehole Potassium Correction Concentration	0	
BHS	Borehole Status	OPEN	
BHT	Bottom Hole Temperature (used in calculations)	40	DEGF
CSD1	Inner Casing Outer Diameter	0	IN
CSD2	Outer Casing Outer Diameter	0	IN
CSW1	Inner Casing Weight	0	LB/F
CSW2	Outer Casing Weight	0	LB/F
DBCC	HNGS Barite Constant Correction Flag	NONE	
GCSE	Generalized Caliper Selection	CALI	
GDEV	Average Angular Deviation of Borehole from Normal	0	DEG
GGRD	Geothermal Gradient	0.01	DF/F
GRSE	Generalized Mud Resistivity Selection	CHART_GEN_9	
GTSE	Generalized Temperature Selection	LINEAR_ESTIMATE	
H1P	HNGS Detector 1 Allow/Disallow In Processing	ALLOW	
H2P	HNGS Detector 2 Allow/Disallow In Processing	ALLOW	
HABK	HNGS Borehole Potassium Running Average	-0.0184082	
HALF	HNGS Alpha Filter Length	60	IN
HCRB	HNGS Apply Borehole Potassium Correction	NONE	
HMWM	Mud Weighting Material	NATU	
HNPE	HNGS Processing Enable	YES	
MATR	Rock Matrix for Neutron Porosity Corrections	LIMESTONE	
S1BI	HNGS Detector 1 Calibration Bismuth Count Rate	1.3	CPS
S2BI	HNGS Detector 2 Calibration Bismuth Count Rate	1.3	CPS

SZDI	HNGS Detector 2 Calibration Bismuth Count Rate	YES	C/F
SGRC	HNGS Standard Gamma-Ray Correction Flag	68	DEGF
SHT	Surface Hole Temperature	ECCE	
TPOS	Tool Position	0.91691	
VBA1	HNGS Detector 1 Variable Barite Factor Running Average	0.941448	
VBA2	HNGS Detector 2 Variable Barite Factor Running Average		
SGT-N: Scintillation Gamma-Ray - N			
BHS	Borehole Status	OPEN	
BHT	Bottom Hole Temperature (used in calculations)	40	DEGF
DPPM	Density Porosity Processing Mode	HIRS	
GCSE	Generalized Caliper Selection	CALI	
GDEV	Average Angular Deviation of Borehole from Normal	0	DEG
GGRD	Geothermal Gradient	0.01	DF/F
GRSE	Generalized Mud Resistivity Selection	CHART_GEN_9	
GTSE	Generalized Temperature Selection	LINEAR_ESTIMATE	
ISSBAR	SGT Nuclear Mud Type	NOBARITE	
MATR	Rock Matrix for Neutron Porosity Corrections	LIMESTONE	
SHT	Surface Hole Temperature	68	DEGF
SOGR	SGT Standoff Distance	0	IN
HOLEV: Integrated Hole/Cement Volume			
BHS	Borehole Status	OPEN	
BHT	Bottom Hole Temperature (used in calculations)	40	DEGF
FCD	Future Casing (Outer) Diameter	0	IN
GCSE	Generalized Caliper Selection	CALI	
GDEV	Average Angular Deviation of Borehole from Normal	0	DEG
GGRD	Geothermal Gradient	0.01	DF/F
GRSE	Generalized Mud Resistivity Selection	CHART_GEN_9	
GTSE	Generalized Temperature Selection	LINEAR_ESTIMATE	
HVCS	Integrated Hole Volume Caliper Selection	AUTOMATIC	
MATR	Rock Matrix for Neutron Porosity Corrections	LIMESTONE	
SHT	Surface Hole Temperature	68	DEGF
System and Miscellaneous			
ALTDPCCHAN	Name of alternate depth channel	SpeedCorrectedDepth	
BS	Bit Size	11.438	IN
BSAL	Borehole Salinity	-50000.00	PPM
CSIZ	Current Casing Size	0.000	IN
CWEI	Casing Weight	0.00	LB/F
DFD	Drilling Fluid Density	1.07	G/C3
MST	Mud Sample Temperature	33.00	DEGC
PBVSADP	Use alternate depth channel for playback	NO	
RMFS	Resistivity of Mud Filtrate Sample	-50000.0000	OHMM
RW	Resistivity of Connate Water	1.0000	OHMM
TD	Total Depth	1158	FT
TDD	Total Depth - Driller	-50000.00	M
TDL	Total Depth - Logger	-50000.00	M
TWS	Temperature of Connate Water Sample	37.78	DEGC

Format: APSLiquidPorosity_1 Vertical Scale: 1:200 Graphics File Created: 08-Mar-2002 12:07

OP System Version: 10C0-306

MCM

DIT-E	10C0-306	HLDT-A	10C0-306
DTA-A	10C0-306	NPLC-B	10C0-306
APS-BA	10C0-306	HNGS-BA	10C0-306
SGT-N	10C0-306	DTC-H	10C0-306

Output DLIS Files

DEFAULT	PI_LDL_APS_NGS_007LUP	FN:9	PRODUCER	08-Mar-2002 12:07
REDUCE	PI_LDL_APS_NGS_007LUP	FN:10	PRODUCER	08-Mar-2002 12:07

Calibration and Check Summary

Measurement	Nominal	Master	Before	After	Change	Limit	Units
Hostile Environment Litho Density - A Wellsite Calibration - Background Measurement							
Master: 25-Jan-2002 14:22 Before: 21-Feb-2002 4:36							
LSW1 Background	100.0	89.06	86.19	N/A	N/A	3.000	CPS
LSW2 Background	105.0	93.23	91.94	N/A	N/A	3.150	CPS
LSW3 Background	210.0	180.0	177.0	N/A	N/A	6.300	CPS
LSW4 Background	290.0	237.9	235.4	N/A	N/A	8.700	CPS
LSW5 Background	610.0	529.6	525.7	N/A	N/A	18.30	CPS
SSW1 Background	100.0	85.18	85.99	N/A	N/A	3.000	CPS
SSW2 Background	200.0	166.8	165.6	N/A	N/A	6.000	CPS
SSW3 Background	530.0	446.5	445.9	N/A	N/A	15.90	CPS
SSW4 Background	280.0	235.8	234.2	N/A	N/A	8.400	CPS

SSW4 Background	280.0	235.8	234.2	N/A	N/A	8.400	CPS
SSW5 Background	205.0	176.3	175.5	N/A	N/A	6.150	CPS
Hostile Environment Litho Density - A Wellsite Calibration - Tool Quality Control Information High Voltage							
Master: 25-Jan-2002 14:22 Before: 21-Feb-2002 4:36							
LS Bkg. High Voltage	1129	1129	1134	N/A	N/A	N/A	V
SS Bkg. High Voltage	1173	1173	1180	N/A	N/A	N/A	V
Hostile Environment Litho Density - A Wellsite Calibration - Detectors Resolution From BKG Measurements							
Master: 25-Jan-2002 14:22 Before: 21-Feb-2002 4:36							
LS Background Resolution	1.000	1.042	1.032	N/A	N/A	N/A	
SS Background Resolution	1.000	0.9530	0.9479	N/A	N/A	N/A	
Hostile Environment Litho Density - A Wellsite Calibration - Caliper Calibration							
Before: 7-Feb-2002 1:47							
Caliper Small Ring	12.00	N/A	16.99	N/A	N/A	N/A	IN
Caliper Large Ring	18.25	N/A	23.87	N/A	N/A	N/A	IN
Hostile Environment Litho Density - A Master Calibration - Aluminum Measurement							
Master: 25-Jan-2002 15:58							
LSW1 Aluminum	648.4	632.3	--	--	--	--	CPS
LSW2 Aluminum	1018	998.4	--	--	--	--	CPS
LSW3 Aluminum	1105	1037	--	--	--	--	CPS
LSW4 Aluminum	609.5	564.9	--	--	--	--	CPS
LSW5 Aluminum	533.8	497.5	--	--	--	--	CPS
SSW1 Aluminum	2664	2526	--	--	--	--	CPS
SSW2 Aluminum	7731	7417	--	--	--	--	CPS
SSW3 Aluminum	10380	9945	--	--	--	--	CPS
SSW4 Aluminum	4574	4376	--	--	--	--	CPS
SSW5 Aluminum	745.2	731.3	--	--	--	--	CPS
Hostile Environment Litho Density - A Master Calibration - Tool Quality Control Information: High Voltage							
Master: 25-Jan-2002 15:58							
LS Alum. High Voltage	1129	1130	--	--	--	--	V
SS Alum. High Voltage	1173	1161	--	--	--	--	V
Hostile Environment Litho Density - A Master Calibration - Detectors Resolution From Aluminum Measurement							
Master: 25-Jan-2002 15:58							
LS Aluminum Resolution	1.000	1.032	--	--	--	--	
SS Aluminum Resolution	1.000	1.050	--	--	--	--	
Hostile Environment Litho Density - A Master Calibration - Aluminum Measurement (Window Ratios)							
Master: 25-Jan-2002 15:58							
LSW1/(LSW4 + LSW5) Calc.	0.5400	0.5952	--	--	--	--	
LSW3/(LSW4 + LSW5) Calc.	0.9600	0.9762	--	--	--	--	
SSW1/(SSW4 + SSW5) Calc.	0.4600	0.4946	--	--	--	--	
SSW3/(SSW4 + SSW5) Calc.	1.900	1.947	--	--	--	--	
Hostile Environment Litho Density - A Master Calibration - Litholog Measurement							
Master: 25-Jan-2002 15:52							
LSW1 Iron	410.0	450.3	--	--	--	--	CPS
LSW2 Iron	870.0	861.2	--	--	--	--	CPS
LSW3 Iron	1030	996.5	--	--	--	--	CPS
LSW4 Iron	590.0	556.0	--	--	--	--	CPS
LSW5 Iron	530.0	490.9	--	--	--	--	CPS
SSW1 Iron	1850	1931	--	--	--	--	CPS
SSW2 Iron	6500	6497	--	--	--	--	CPS
SSW3 Iron	10000	9541	--	--	--	--	CPS
SSW4 Iron	4500	4223	--	--	--	--	CPS
SSW5 Iron	750.0	684.9	--	--	--	--	CPS
Hostile Environment Litho Density - A Master Calibration - Tool Quality Control Information: High Voltage							
Master: 25-Jan-2002 15:52							
LS Lith High Voltage	1129	1130	--	--	--	--	V
SS Lith High Voltage	1173	1163	--	--	--	--	V
Hostile Environment Litho Density - A Master Calibration - Detectors Resolution From Litholog Measurement							
Master: 25-Jan-2002 15:52							
LS Lith Resolution	1.000	1.033	--	--	--	--	
SS Lith Resolution	1.000	1.016	--	--	--	--	
Accelerator-Porosity Tool Wellsite Calibration - Detector Background							
Master: 25-Jan-2002 18:34 Before: 8-Mar-2002 10:51 After: 8-Mar-2002 13:05							
Near Det Bkg Cntrate	30.00	32.90	31.34	32.29	0.9483	N/A	CPS
Far Det Bkg Cntrate	30.00	34.46	53.89	35.56	-18.33	N/A	CPS
Array-1 Det Bkg Cntrate	30.00	28.56	29.57	30.20	0.6238	N/A	CPS
Array-2 Det Bkg Cntrate	30.00	30.78	30.44	32.00	1.562	N/A	CPS
Array Therm Det Bkg Cntrate	30.00	32.89	32.54	34.04	1.503	N/A	CPS
Accelerator-Porosity Tool Wellsite Calibration - Calibration Ratios							
Master: 25-Jan-2002 18:35							
Near/Far Calibration Ratio	0.9250	0.9022	N/A	N/A	N/A	N/A	

Near/Array Calibration Ratio	1.030	1.063	N/A	N/A	N/A	N/A
Near/Array Cal Ratio Up/Down	1.000	1.007	N/A	N/A	N/A	N/A

Accelerator-Porosity Tool Wellsite Calibration - Tank Check

Master: Calibration not done

Array-1 Standoff Porosity	11.10	11.94	N/A	N/A	N/A	N/A	PU
Array-2 Standoff Porosity	11.10	11.71	N/A	N/A	N/A	N/A	PU
Average Slowing Down Time	6.000	N/A	N/A	N/A	N/A	N/A	US
Array-1 SDT Ratio Up/Down	1.000	N/A	N/A	N/A	N/A	N/A	
Array-1 SDT Ratio Up/Down	1.000	N/A	N/A	N/A	N/A	N/A	
Sigma Formation	27.50	27.64	N/A	N/A	N/A	N/A	CU

Hostile Natural Gamma Ray Sonde Wellsite Calibration - Detector 1 Check

Master: 23-Jan-2002 11:37 Before: 7-Feb-2002 1:13

Na 511 Peak Loc	40.00	40.51	40.71	N/A	N/A	1.000	
Na 511 Peak Res	15.50	15.75	17.24	N/A	N/A	2.000	%
High Voltage	1150	1203	1207	N/A	N/A	30.00	V
Na 1785 Peak Loc	142.6	144.6	146.2	N/A	N/A	7.000	
Na 1785 Peak Res	8.500	9.254	9.073	N/A	N/A	2.000	%
Temperature	15.50	21.86	29.34	N/A	N/A	N/A	DEGC
Na Count Rate	45.00	39.29	40.56	N/A	N/A	8.000	CPS

Hostile Natural Gamma Ray Sonde Wellsite Calibration - Detector 2 Check

Master: 23-Jan-2002 11:37 Before: 7-Feb-2002 1:13

Na 511 Peak Loc	40.00	40.54	40.54	N/A	N/A	1.000	
Na 511 Peak Res	15.50	16.19	16.67	N/A	N/A	2.000	%
High Voltage	1150	1233	1236	N/A	N/A	30.00	V
Na 1785 Peak Loc	142.6	143.9	144.1	N/A	N/A	7.000	
Na 1785 Peak Res	8.500	9.453	8.968	N/A	N/A	2.000	%
Temperature	15.50	21.24	29.04	N/A	N/A	N/A	DEGC
Na Count Rate	45.00	39.11	40.36	N/A	N/A	8.000	CPS

Hostile Natural Gamma Ray Sonde Wellsite Calibration - Ratio Of Detector 1 To Detector 2

Master: 23-Jan-2002 11:37 Before: 7-Feb-2002 1:13

Coincidence Count Rate Ratio	1.000	1.004	1.005	N/A	N/A	0.05000	
------------------------------	-------	-------	-------	-----	-----	---------	--

Hostile Natural Gamma Ray Sonde Master Calibration - Detector 1 Calibration

Master: 23-Jan-2002 11:31

Na 511 Peak Set Point	40.00	41.00	--	--	--	--	
Th Peak Loc	209.6	209.7	--	--	--	--	
Th Peak Res	7.000	7.364	--	--	--	--	%
Background Count Rate	142.5	19.66	--	--	--	--	CPS
Gain Ratio	1.000	0.9848	--	--	--	--	

Hostile Natural Gamma Ray Sonde Master Calibration - Detector 2 Calibration

Master: 23-Jan-2002 11:31

Na 511 Peak Set Point	40.00	41.00	--	--	--	--	
Th Peak Loc	209.6	208.7	--	--	--	--	
Th Peak Res	7.000	7.834	--	--	--	--	%
Background Count Rate	142.5	17.61	--	--	--	--	CPS
Gain Ratio	1.000	0.9795	--	--	--	--	

Scintillation Gamma-Ray - N Wellsite Calibration - Detector Calibration

Before: Calibration out of date 7-Feb-2002 1:09 After: Calibration not done

Gamma Ray (Jig - Bkg)	167.5	N/A	167.5	N/A	N/A	0.09091	GAPI
Gamma Ray (Calibrated)	165.0	N/A	165.0	N/A	N/A	15.00	GAPI

Accelerator-Porosity Tool - Detector Plateau Settings :

Near Detector Plateau Setting	1748 V
Far Detector Plateau Setting	2052 V
Array Detector Plateau Setting	1969 V

Dual Induction - E / Equipment Identification

Primary Equipment:		
Dual Induction Sonde	DIS - HB	442
Dual Induction Cartridge	DIC - EB	438
Auxiliary Equipment:		
Mass Isolated Housing	MIH - ZA	417

Hostile Environment Litho Density - A / Equipment Identification

Primary Equipment:

HOSTILE ENVIRONMENT LITHO DENSITY HIGH V	HLDV - A	10
HOSTILE ENVIRONMENT LITHO DENSITY CARTRI	HLDC - AA	11
Gamma Source Radioactive	GSR - Z	1846

Auxiliary Equipment:

HOSTILE ENVIRONMENT LITHO DENSITY SONDE	HLDS - B	10
HOSTILE ENVIRONMENT ELECTRONICS CARTRIDG	HEH - H	12
HOSTILE ENVIRONMENT ELECTRONICS CARTRIDG	HEH - G	11
HOSTILE ENVIRONMENT LITHO DENSITY PAD	HLDP - B	10

Hostile Environment Litho Density - A Wellsite Calibration														
Background Measurement														
Phase	LSW1 Background CPS			Value	Phase	LSW2 Background CPS			Value	Phase	LSW3 Background CPS			Value
Master				89.06	Master				93.23	Master				180.0
Before				86.19	Before				91.94	Before				177.0
	65.00 (Minimum)	100.0 (Nominal)	125.0 (Maximum)			70.00 (Minimum)	105.0 (Nominal)	130.0 (Maximum)			150.0 (Minimum)	210.0 (Nominal)	250.0 (Maximum)	
Phase	LSW4 Background CPS			Value	Phase	LSW5 Background CPS			Value	Phase	SSW1 Background CPS			Value
Master				237.9	Master				529.6	Master				85.18
Before				235.4	Before				525.7	Before				85.99
	220.0 (Minimum)	290.0 (Nominal)	330.0 (Maximum)			430.0 (Minimum)	610.0 (Nominal)	730.0 (Maximum)			70.00 (Minimum)	100.0 (Nominal)	120.0 (Maximum)	
Phase	SSW2 Background CPS			Value	Phase	SSW3 Background CPS			Value	Phase	SSW4 Background CPS			Value
Master				166.8	Master				446.5	Master				235.8
Before				165.6	Before				445.9	Before				234.2
	140.0 (Minimum)	200.0 (Nominal)	240.0 (Maximum)			380.0 (Minimum)	530.0 (Nominal)	630.0 (Maximum)			190.0 (Minimum)	280.0 (Nominal)	340.0 (Maximum)	
Phase	SSW5 Background CPS			Value										
Master				176.3										
Before				175.5										
	140.0 (Minimum)	205.0 (Nominal)	250.0 (Maximum)											
Master: 25-Jan-2002 14:22					Before: 21-Feb-2002 4:36									

Hostile Environment Litho Density - A Wellsite Calibration									
Detectors Resolution From BKG Measurements									
Phase	LS Background Resolution			Value	Phase	SS Background Resolution			Value
Master				1.042	Master				0.9530
Before				1.032	Before				0.9479
	0.7000 (Minimum)	1.000 (Nominal)	1.111 (Maximum)			0.7000 (Minimum)	1.000 (Nominal)	1.111 (Maximum)	
Master: 25-Jan-2002 14:22			Before: 21-Feb-2002 4:36						

Hostile Environment Litho Density - A Master Calibration														
Aluminum Measurement														
Phase	LSW1 Aluminum CPS			Value	Phase	LSW2 Aluminum CPS			Value	Phase	LSW3 Aluminum CPS			Value
Master				632.3	Master				998.4	Master				1037
	440.0 (Minimum)	648.4 (Nominal)	840.0 (Maximum)			840.0 (Minimum)	1018 (Nominal)	1200 (Maximum)			920.0 (Minimum)	1105 (Nominal)	1280 (Maximum)	
Phase	LSW4 Aluminum CPS			Value	Phase	LSW5 Aluminum CPS			Value	Phase	SSW1 Aluminum CPS			Value
Master				564.9	Master				497.5	Master				2526
	520.0 (Minimum)	609.5 (Nominal)	720.0 (Maximum)			450.0 (Minimum)	533.8 (Nominal)	670.0 (Maximum)			1850 (Minimum)	2664 (Nominal)	2900 (Maximum)	
Phase	SSW2 Aluminum CPS			Value	Phase	SSW3 Aluminum CPS			Value	Phase	SSW4 Aluminum CPS			Value
Master				7417	Master				9945	Master				4376
	6200 (Minimum)	7731 (Nominal)	8500 (Maximum)			8750 (Minimum)	10380 (Nominal)	11750 (Maximum)			4000 (Minimum)	4574 (Nominal)	5400 (Maximum)	
Phase	SSW5 Aluminum CPS			Value										
Master				731.3										
	570.0 (Minimum)	745.2 (Nominal)	1110 (Maximum)											
Master: 25-Jan-2002 15:58														

Hostile Environment Litho Density - A Master Calibration							
Detectors Resolution From Aluminum Measurement							
Phase	LS Aluminum Resolution		Value	Phase	SS Aluminum Resolution		Value
Master			1.032	Master			1.050
	0.7000 (Minimum)	1.000 (Nominal)	1.111 (Maximum)		0.7000 (Minimum)	1.000 (Nominal)	1.111 (Maximum)

Master: 25-Jan-2002 15:58

Hostile Environment Litho Density - A Master Calibration							
Aluminum Measurement (Window Ratios)							
Phase	LSW1/(LSW4 + LSW5) Calc.		Value	Phase	LSW3/(LSW4 + LSW5) Calc.		Value
Master			0.5952	Master			0.9762
	0.3400 (Minimum)	0.5400 (Nominal)	0.7400 (Maximum)		0.7600 (Minimum)	0.9600 (Nominal)	1.160 (Maximum)
Phase	SSW1/(SSW4 + SSW5) Calc.		Value	Phase	SSW3/(SSW4 + SSW5) Calc.		Value
Master			0.4946	Master			1.947
	0.3600 (Minimum)	0.4600 (Nominal)	0.5600 (Maximum)		1.700 (Minimum)	1.900 (Nominal)	2.100 (Maximum)

Master: 25-Jan-2002 15:58

Hostile Environment Litho Density - A Master Calibration														
Litholog Measurement														
Phase	LSW1 Iron CPS			Value	Phase	LSW2 Iron CPS			Value	Phase	LSW3 Iron CPS			Value
Master				450.3	Master				861.2	Master				996.5
	310.0 (Minimum)	410.0 (Nominal)	510.0 (Maximum)			660.0 (Minimum)	870.0 (Nominal)	980.0 (Maximum)			810.0 (Minimum)	1030 (Nominal)	1170 (Maximum)	
Phase	LSW4 Iron CPS			Value	Phase	LSW5 Iron CPS			Value	Phase	SSW1 Iron CPS			Value
Master				556.0	Master				490.9	Master				1931
	470.0 (Minimum)	590.0 (Nominal)	670.0 (Maximum)			400.0 (Minimum)	530.0 (Nominal)	620.0 (Maximum)			1400 (Minimum)	1850 (Nominal)	2120 (Maximum)	
Phase	SSW2 Iron CPS			Value	Phase	SSW3 Iron CPS			Value	Phase	SSW4 Iron CPS			Value
Master				6497	Master				9541	Master				4223
	5170 (Minimum)	6500 (Nominal)	7270 (Maximum)			8100 (Minimum)	10000 (Nominal)	11000 (Maximum)			3620 (Minimum)	4500 (Nominal)	5020 (Maximum)	
Phase	SSW5 Iron CPS			Value										
Master				684.9										
	470.0 (Minimum)	750.0 (Nominal)	10100 (Maximum)											

Master: 25-Jan-2002 15:52

Hostile Environment Litho Density - A Master Calibration							
Detectors Resolution From Litholog Measurement							
Phase	LS Lith Resolution		Value	Phase	SS Lith Resolution		Value
Master			1.033	Master			1.016
	0.7000 (Minimum)	1.000 (Nominal)	1.111 (Maximum)		0.7000 (Minimum)	1.000 (Nominal)	1.111 (Maximum)

Master: 25-Jan-2002 15:52

Nuclear Porosity Lithology Cartridge - B / Equipment Identification		
Primary Equipment:	NPLC Cartridge	NPLC - B 79
Auxiliary Equipment:	NPLC Housing	NPH - B 82

Accelerator-Porosity Tool / Equipment Identification		
Primary Equipment:	Accelerator-Porosity Sonde	APS - BA 22
	APS Minitron	MNTR - F 4185
Auxiliary Equipment:		

Accelerator-Porosity Tool Wellsite Calibration									
Detector Background									
Phase	Near Det Bkg Cntrate CPS	Value	Phase	Far Det Bkg Cntrate CPS	Value	Phase	Array-1 Det Bkg Cntrate CPS	Value	
Master		32.90	Master		34.46	Master		28.56	
Before		31.34	Before		53.89	Before		29.57	
After		32.29	After		35.56	After		30.20	
	0 (Minimum) 30.00 (Nominal) 50.00 (Maximum)			0 (Minimum) 30.00 (Nominal) 50.00 (Maximum)			0 (Minimum) 30.00 (Nominal) 50.00 (Maximum)		
Phase	Array-2 Det Bkg Cntrate CPS	Value	Phase	Array Therm Det Bkg Cntrate CPS	Value	See Remarks			
Master		30.78	Master		32.89				
Before		30.44	Before		32.54				
After		32.00	After		34.04				
	0 (Minimum) 30.00 (Nominal) 50.00 (Maximum)			0 (Minimum) 30.00 (Nominal) 50.00 (Maximum)					
Master: 25-Jan-2002 18:34			Before: 8-Mar-2002 10:51			After: 8-Mar-2002 13:05			

Accelerator-Porosity Tool Wellsite Calibration									
Calibration Ratios									
Phase	Near/Far Calibration Ratio	Value	Phase	Near/Array Calibration Ratio	Value	Phase	Near/Array Cal Ratio Up/Down	Value	
Master		0.9022	Master		1.063	Master		1.007	
	0.8000 (Minimum) 0.9250 (Nominal) 1.050 (Maximum)			0.9000 (Minimum) 1.030 (Nominal) 1.170 (Maximum)			0.9700 (Minimum) 1.000 (Nominal) 1.030 (Maximum)		
Master: 25-Jan-2002 18:35									

Accelerator-Porosity Tool Wellsite Calibration									
Tank Check									
Phase	Array-1 Standoff Porosity PU	Value	Phase	Array-2 Standoff Porosity PU	Value	Phase	Average Slowing Down Time US	Value	
Master		11.94	Master		11.71	Master		N/A	
	9.900 (Minimum) 11.10 (Nominal) 12.30 (Maximum)			9.900 (Minimum) 11.10 (Nominal) 12.30 (Maximum)			5.750 (Minimum) 6.000 (Nominal) 6.250 (Maximum)		
Phase	Array-1 SDT Ratio Up/Down	Value	Phase	Array-1 SDT Ratio Up/Down	Value	Phase	Sigma Formation CU	Value	
Master		N/A	Master		N/A	Master		27.64	
	0.9500 (Minimum) 1.000 (Nominal) 1.050 (Maximum)			0.9500 (Minimum) 1.000 (Nominal) 1.050 (Maximum)			20.00 (Minimum) 27.50 (Nominal) 35.00 (Maximum)		
Master: Calibration not done									

[See Remarks](#)

Accelerator-Porosity Tool Master Calibration									
Detector Calibration									
Phase	Near/Far Calibration Ratio	Value	Phase	Near/Array Calibration Ratio	Value	Phase	Near/Array Cal Ratio Up/Down	Value	
Master		0.9022	Master		1.063	Master		1.007	
	0.8000 (Minimum) 0.9250 (Nominal) 1.050 (Maximum)			0.9000 (Minimum) 1.030 (Nominal) 1.170 (Maximum)			0.9700 (Minimum) 1.000 (Nominal) 1.030 (Maximum)		
Master: 25-Jan-2002 18:35									

Accelerator-Porosity Tool Master Calibration									
Tank Check									
Phase	Array-1 Standoff Porosity PU	Value	Phase	Array-2 Standoff Porosity PU	Value	Phase	Average Slowing Down Time US	Value	
Master		11.94	Master		11.71	Master		N/A	
	9.900 (Minimum) 11.10 (Nominal) 12.30 (Maximum)			9.900 (Minimum) 11.10 (Nominal) 12.30 (Maximum)			5.750 (Minimum) 6.000 (Nominal) 6.250 (Maximum)		
Phase	Array-1 SDT Ratio Up/Down	Value	Phase	Array-1 SDT Ratio Up/Down	Value	Phase	Sigma Formation CU	Value	
Master		N/A	Master		N/A	Master		27.64	
	0.9500 (Minimum) 1.000 (Nominal) 1.050 (Maximum)			0.9500 (Minimum) 1.000 (Nominal) 1.050 (Maximum)			20.00 (Minimum) 27.50 (Nominal) 35.00 (Maximum)		
Master: Calibration not done									

[See Remarks](#)

Primary Equipment:
 HNGS Sonde

Auxiliary Equipment:
 HNGS Sonde Housing
 Gamma Source Radioactive

HNGS - BA 77

HNSH - BA 79
 GSR - U 135

Hostile Natural Gamma Ray Sonde Wellsite Calibration											
Detector 1 Check											
Phase	Na 511 Peak Loc		Value	Phase	Na 511 Peak Res %		Value	Phase	High Voltage V		Value
Master			40.51	Master			15.75	Master			1203
Before			40.71	Before			17.24	Before			1207
	37.50 (Minimum)	40.00 (Nominal)	42.50 (Maximum)		12.00 (Minimum)	15.50 (Nominal)	19.00 (Maximum)		900.0 (Minimum)	1150 (Nominal)	1600 (Maximum)
Phase	Na 1785 Peak Loc		Value	Phase	Na 1785 Peak Res %		Value	Phase	Temperature DEGC		Value
Master			144.6	Master			9.254	Master			21.86
Before			146.2	Before			9.073	Before			29.34
	135.0 (Minimum)	142.6 (Nominal)	150.3 (Maximum)		7.000 (Minimum)	8.500 (Nominal)	11.00 (Maximum)		-28.89 (Minimum)	15.50 (Nominal)	60.00 (Maximum)
Phase	Na Count Rate CPS		Value								
Master			39.29								
Before			40.56								
	15.00 (Minimum)	45.00 (Nominal)	100.0 (Maximum)								
Master: 23-Jan-2002 11:37				Before: 7-Feb-2002 1:13							

Hostile Natural Gamma Ray Sonde Wellsite Calibration											
Detector 2 Check											
Phase	Na 511 Peak Loc		Value	Phase	Na 511 Peak Res %		Value	Phase	High Voltage V		Value
Master			40.54	Master			16.19	Master			1233
Before			40.54	Before			16.67	Before			1236
	37.50 (Minimum)	40.00 (Nominal)	42.50 (Maximum)		12.00 (Minimum)	15.50 (Nominal)	19.00 (Maximum)		900.0 (Minimum)	1150 (Nominal)	1600 (Maximum)
Phase	Na 1785 Peak Loc		Value	Phase	Na 1785 Peak Res %		Value	Phase	Temperature DEGC		Value
Master			143.9	Master			9.453	Master			21.24
Before			144.1	Before			8.968	Before			29.04
	135.0 (Minimum)	142.6 (Nominal)	150.3 (Maximum)		7.000 (Minimum)	8.500 (Nominal)	11.00 (Maximum)		-28.89 (Minimum)	15.50 (Nominal)	60.00 (Maximum)
Phase	Na Count Rate CPS		Value								
Master			39.11								
Before			40.36								
	15.00 (Minimum)	45.00 (Nominal)	100.0 (Maximum)								
Master: 23-Jan-2002 11:37				Before: 7-Feb-2002 1:13							

Hostile Natural Gamma Ray Sonde Wellsite Calibration			
Ratio Of Detector 1 To Detector 2			
Phase	Coincidence Count Rate Ratio	Value	
Master		1.004	
Before		1.005	
	0.9500 (Minimum)	1.000 (Nominal)	1.050 (Maximum)
Master: 23-Jan-2002 11:37			
Before: 7-Feb-2002 1:13			

Hostile Natural Gamma Ray Sonde Master Calibration											
Detector 1 Calibration											
Phase	Na 511 Peak Set Point		Value	Phase	Th Peak Loc		Value	Phase	Th Peak Res %		Value
Master			41.00	Master			209.7	Master			7.364
	38.00 (Minimum)	40.00 (Nominal)	42.00 (Maximum)		201.0 (Minimum)	209.6 (Nominal)	218.3 (Maximum)		5.000 (Minimum)	7.000 (Nominal)	9.000 (Maximum)
Phase	Background Count Rate CPS		Value	Phase	Gain Ratio		Value				

Phase	Background Count Rate CPS	Value	Phase	Gain Ratio	Value	See Remarks
Master	EXCEEDS LIMIT	19.66	Master		0.9848	
	20.00 (Minimum) 142.5 (Nominal) 265.0 (Maximum)			0.9400 (Minimum) 1.000 (Nominal) 1.060 (Maximum)		

Master: 23-Jan-2002 11:31

Hostile Natural Gamma Ray Sonde Master Calibration								
Detector 2 Calibration								
Phase	Na 511 Peak Set Point	Value	Phase	Th Peak Loc	Value	Phase	Th Peak Res %	Value
Master		41.00	Master		208.7	Master		7.834
	38.00 (Minimum) 40.00 (Nominal) 42.00 (Maximum)			201.0 (Minimum) 209.6 (Nominal) 218.3 (Maximum)			5.000 (Minimum) 7.000 (Nominal) 9.000 (Maximum)	
Phase	Background Count Rate CPS	Value	Phase	Gain Ratio	Value	See Remarks		
Master	EXCEEDS LIMIT	17.61	Master		0.9795			
	20.00 (Minimum) 142.5 (Nominal) 265.0 (Maximum)			0.9400 (Minimum) 1.000 (Nominal) 1.060 (Maximum)				

Master: 23-Jan-2002 11:31

Scintillation Gamma-Ray - N / Equipment Identification

Primary Equipment:

Scintillation Gamma Cartridge
 Scintillation Gamma Detector

SGC - TB 9582
 SGD - TAA

Auxiliary Equipment:

Scintillation Gamma Housing
 Gamma Source Radioactive

SGH - K 2448
 GSR - U/Y

Company: Lamont Doherty

Schlumberger

Well: ODP Leg 201, Site 1229A PRU-1A

Field: Peru Margin

Rig: JOIDES Resolution

Ocean: Pacific

APS/HLDT Porosity
 Natural Gamma Ray