

**Company:** Lamont Doherty

**Well:** ODP Leg 202, Site 1239A

**Field:** Carnegie Ridge

**Country:** Ecuador **Ocean:** Pacific Ocean

## Natural Gamma Ray Log

Country: Ecuador		Elev.: K.B. 11.3 m	
Field: Carnegie Ridge		G.L. -1426.1 m	
Location: Rig- Joides Resolution		D.F. 11 m	
Well: ODP Leg 202, Site 1239A		Elev.: 0 m	
Company: Lamont Doherty		above Perm. Datum	
<b>LOCATION</b>			
Rig- Joides Resolution			
Permanent Datum: _____		GROUND LEVEL _____	
Log Measured From: _____		DES _____	
Drilling Measured From: _____		DES _____	
API Serial No. _____		Max. Hole Devi. _____	
Longitude 82 04.8512 W		Latitude .40.395 S	

Logging Date			
Run Number	1		
Depth Driller	1941.5 m		
Schlumberger Depth	1941 m		
Bottom Log Interval	1939 m		
Top Log Interval	1418.7 m		
Casing Driller Size @ Depth	0.000 in @ 1506.1 m		
Casing Schlumberger	1505 m		
Bit Size	11.437 in		
Type Fluid In Hole	Sepiolite		
Density	1.066 g/cm3		
Fluid Loss	PH		
Source Of Sample			
RM @ Measured Temperature	@	23 degC	@
RMF @ Measured Temperature	@		@
RMC @ Measured Temperature	@		@
Source RMF	RMC		
RM @ MRT	RMF @ MRT	@	@
Maximum Recorded Temperatures			
Circulation Stopped	Time	5/12/02	1400
Logger On Bottom	Time	5/12/02	See Log
Unit Number	Location	99	Houston
Recorded By		Steve Kittredge	
Witnessed By		Ule Ninmemann	

Logging Date				Run 1	Run 2	Run
Run Number						
Depth Driller						
Schlumberger Depth						
Bottom Log Interval						
Top Log Interval						
Casing Driller Size @ Depth						
Casing Schlumberger						
Bit Size						
Type Fluid In Hole						
Density						
Fluid Loss						
Source Of Sample						
RM @ Measured Temperature		@				
RMF @ Measured Temperature		@				
RMC @ Measured Temperature		@				
Source RMF						
RM @ MRT	RMF @ MRT	@	@			
Maximum Recorded Temperatures						
Circulation Stopped	Time					
Logger On Bottom	Time					
Unit Number	Location					
Recorded By						
Witnessed By						

**DISCLAIMER**



THE USE OF AND RELIANCE UPON THIS RECORDED-DATA BY THE HEREIN NAMED COMPANY (AND ANY OF ITS AFFILIATES, PARTNERS, REPRESENTATIVES, AGENTS, CONSULTANTS AND EMPLOYEES) IS SUBJECT TO THE TERMS AND CONDITIONS AGREED UPON BETWEEN SCHLUMBERGER AND THE COMPANY, INCLUDING: (a) RESTRICTIONS ON USE OF THE RECORDED-DATA; (b) DISCLAIMERS AND WAIVERS OF WARRANTIES AND REPRESENTATIONS REGARDING COMPANY'S USE OF AND RELIANCE UPON THE RECORDED-DATA; AND (c) CUSTOMER'S FULL AND SOLE RESPONSIBILITY FOR ANY INFERENCE DRAWN OR DECISION MADE IN CONNECTION WITH THE USE OF THIS RECORDED-DATA.

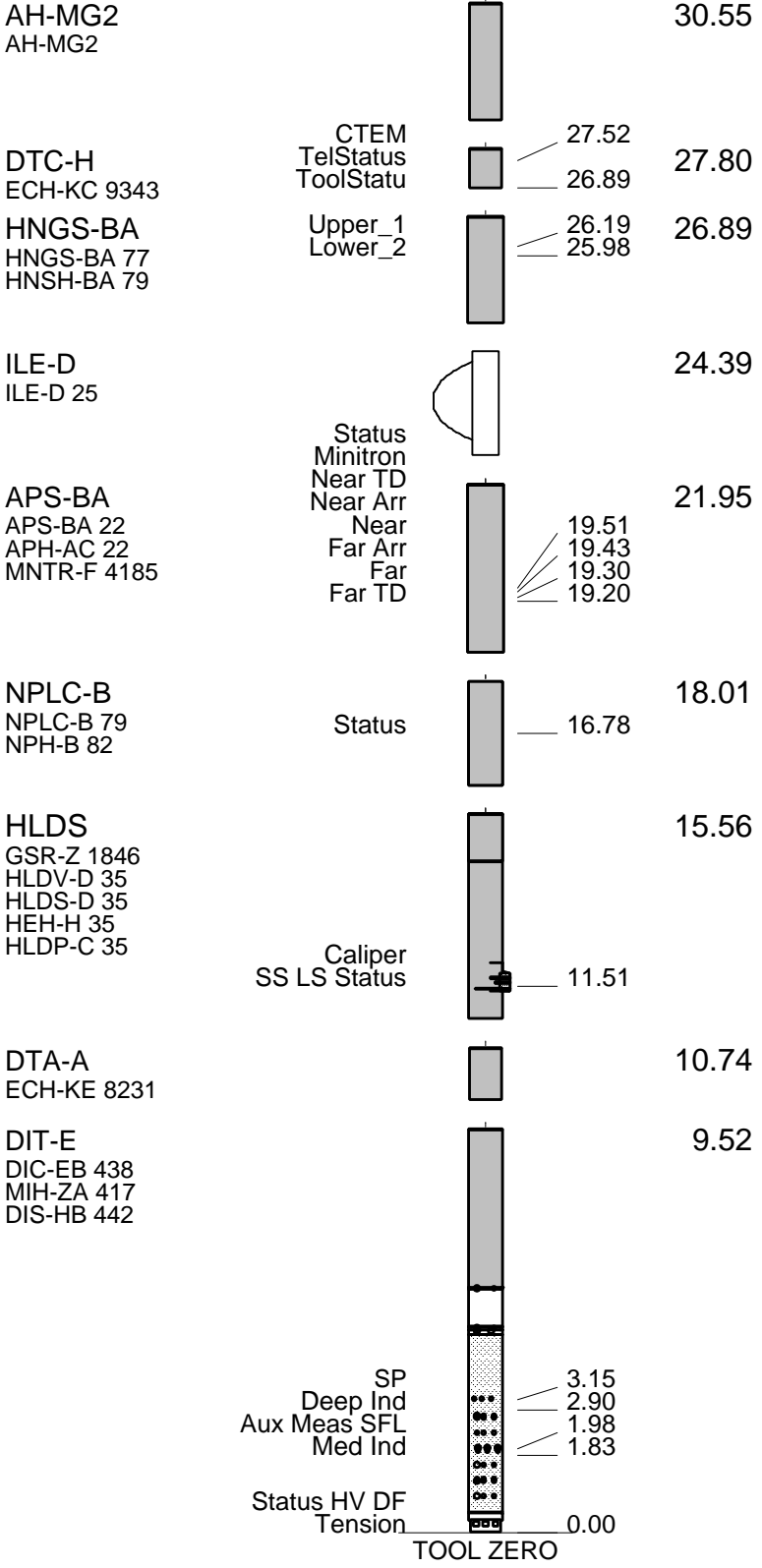
OTHER SERVICES1 OS1: MESTB/DSI OS2: OS3: OS4: OS5:	OTHER SERVICES2 OS1: OS2: OS3: OS4: OS5:
-------------------------------------------------------------------	---------------------------------------------------------

REMARKS: RUN NUMBER 1 Hole Cored with APC/XCB. All depths in Meters Below Rig Floor (MBRF). Lamont Temperature tool was run WHC was run. Sea Floor Driller- 1426.1 MBRF> Total Depth Driller- 1941.5 MBRF. Total Depth Logger- 1941 MBRF. Drill Pipe Driller- 1506.1 MBRF. Drill Pipe Logger- 1505 MBRF. Lamont MGT tool was run.	REMARKS: RUN NUMBER 2
-----------------------------------------------------------------------------------------------------------------------------------------------------------------------------------------------------------------------------------------------------------------------------------------------------------------------------------------------------------------	-----------------------

RUN 1			RUN 2		
SERVICE ORDER #:			SERVICE ORDER #:		
PROGRAM VERSION:		10C0-306	PROGRAM VERSION:		
FLUID LEVEL:			FLUID LEVEL:		
LOGGED INTERVAL	START	STOP	LOGGED INTERVAL	START	STOP

**EQUIPMENT DESCRIPTION**

RUN 1		RUN 2	
<b>SURFACE EQUIPMENT</b>			
SFT-281 24 SFT-178 4722 GSR-U 135 DTM-B			
<b>DOWNHOLE EQUIPMENT</b>			
LEH-QT		34.33	
LEH-QT			
AH-MGT2		33.44	
AH-MGT2			



MAXIMUM STRING DIAMETER 3.88 IN  
 MEASUREMENTS RELATIVE TO TOOL ZERO  
 ALL LENGTHS IN METERS

### Output DLIS Files

DEFAULT	PI_LDL_APS_NGS_007LUP	FN:8	PRODUCER	12-May-2002 17:59	1940.8 M	1418.7 M
TCOMBO_CSUT	PI_LDL_APS_NGS_007LUP	FN:9	PRODUCER	12-May-2002 17:59	1940.8 M	1418.7 M

### OP System Version: 10C0-306

MCM

**MAIN UP LOG**

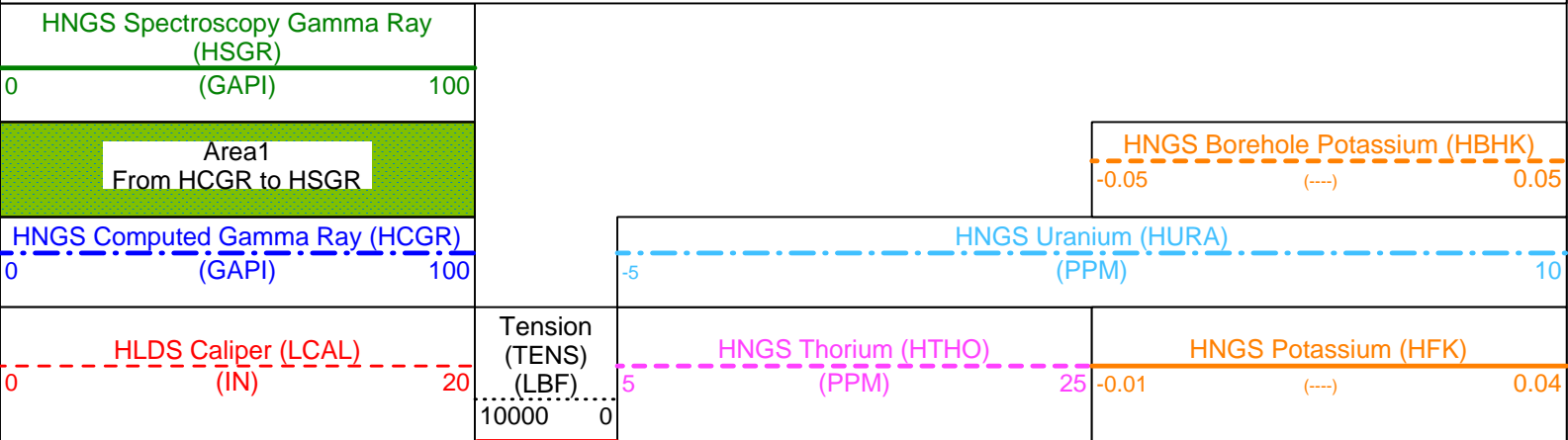
DIT-E	10C0-306	DTA-A	10C0-306
HLDS	10C0-306	NPLC-B	10C0-306
APS-BA	10C0-306	HNGS-BA	10C0-306
DTC-H	10C0-306		

### Changed Parameter Summary

DLIS Name	New Value	Previous Value	Depth & Time
GCSE	BS	LCAL	1513.6 19:39:11

#### PIP SUMMARY

Time Mark Every 60 S



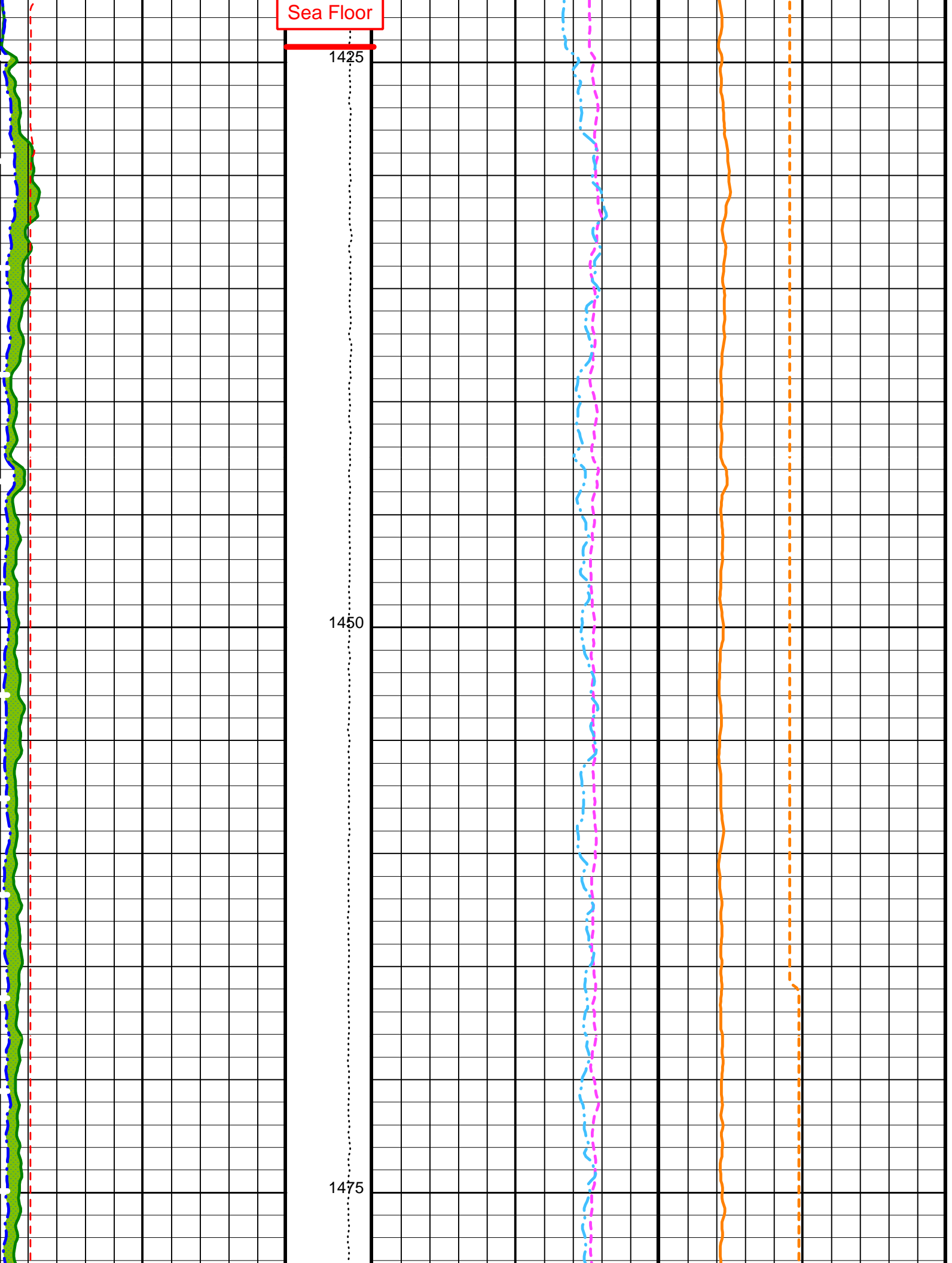
**Last Reading**

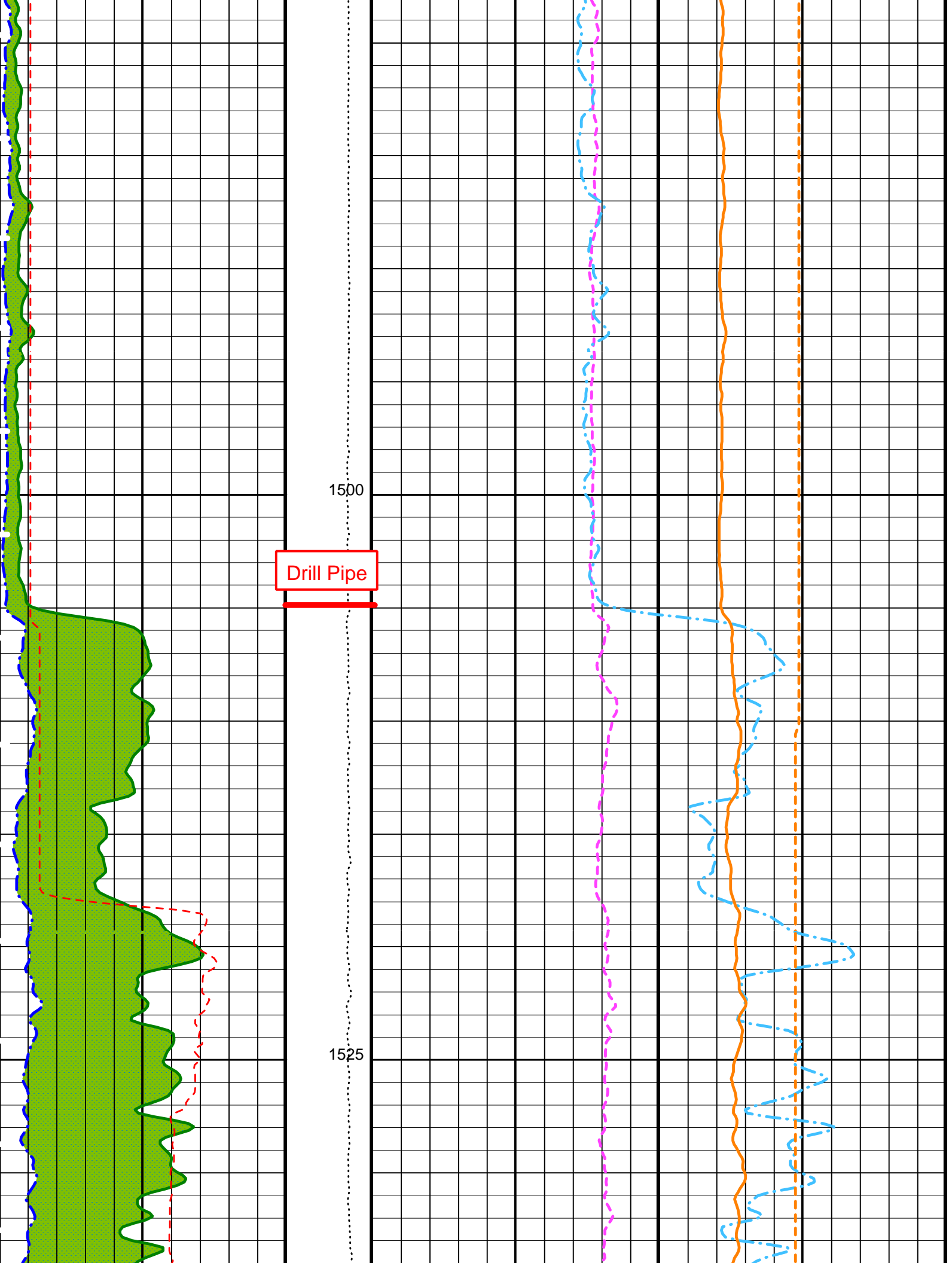
Sea Floor

1425

1450

1475

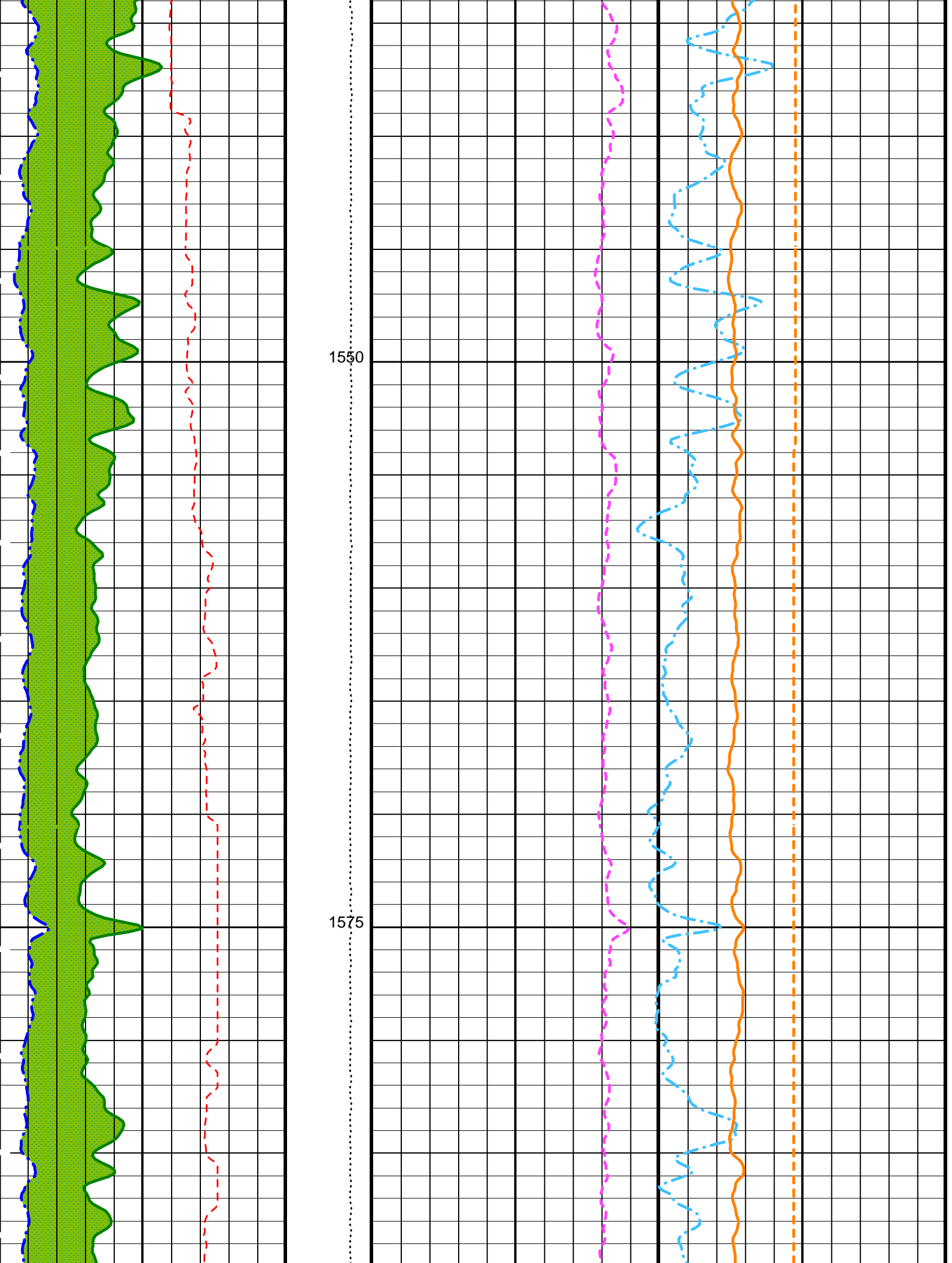


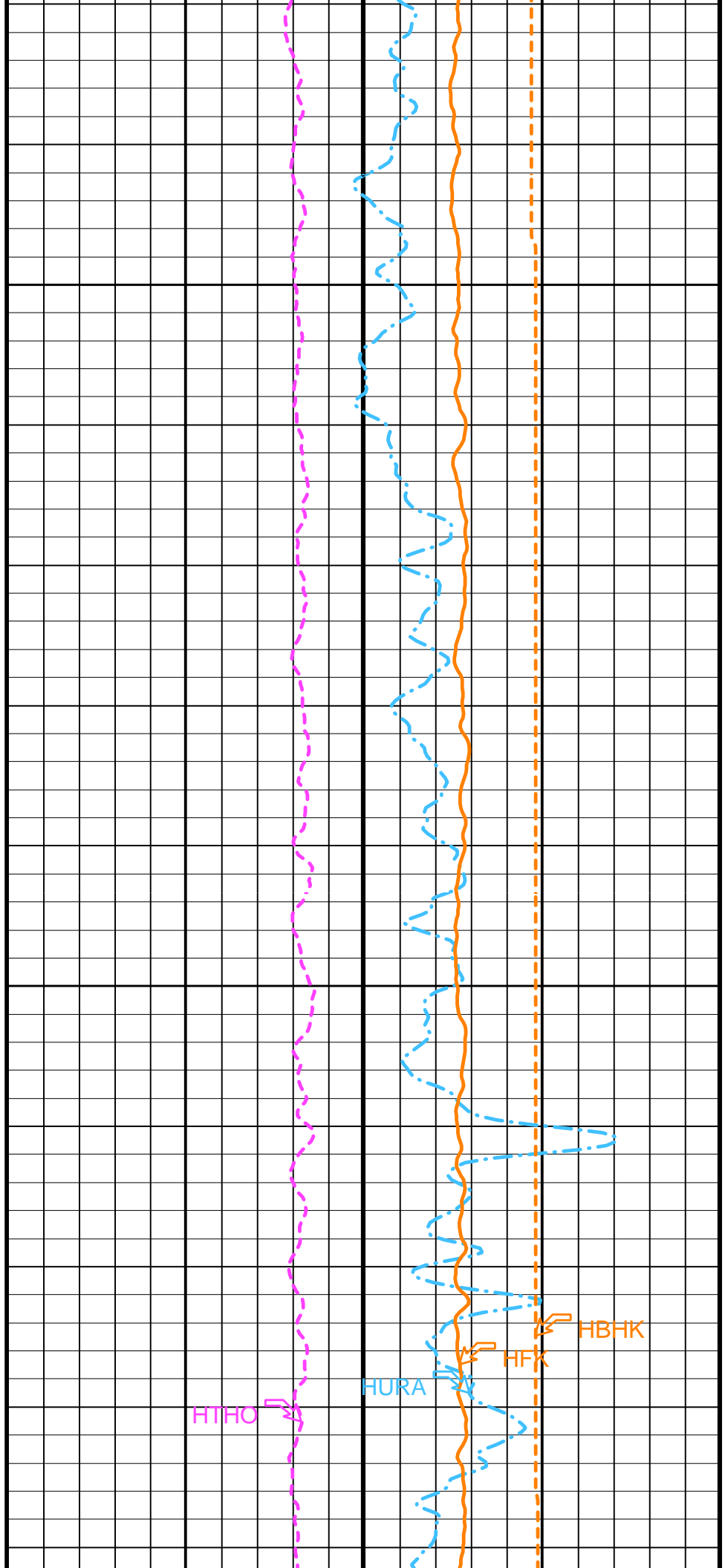
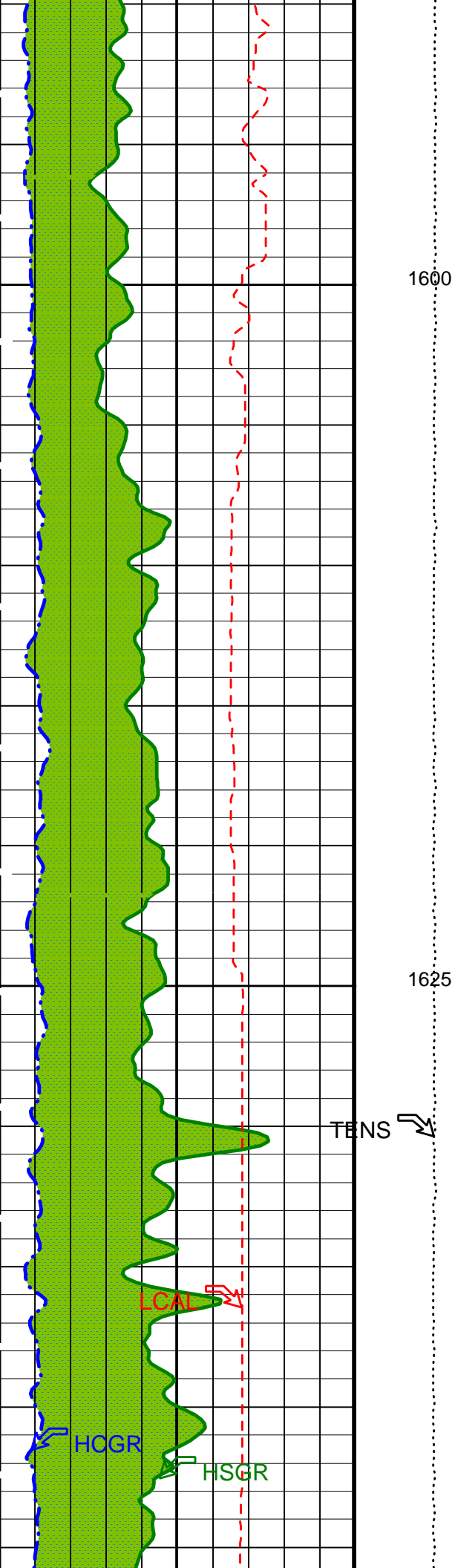


Drill Pipe

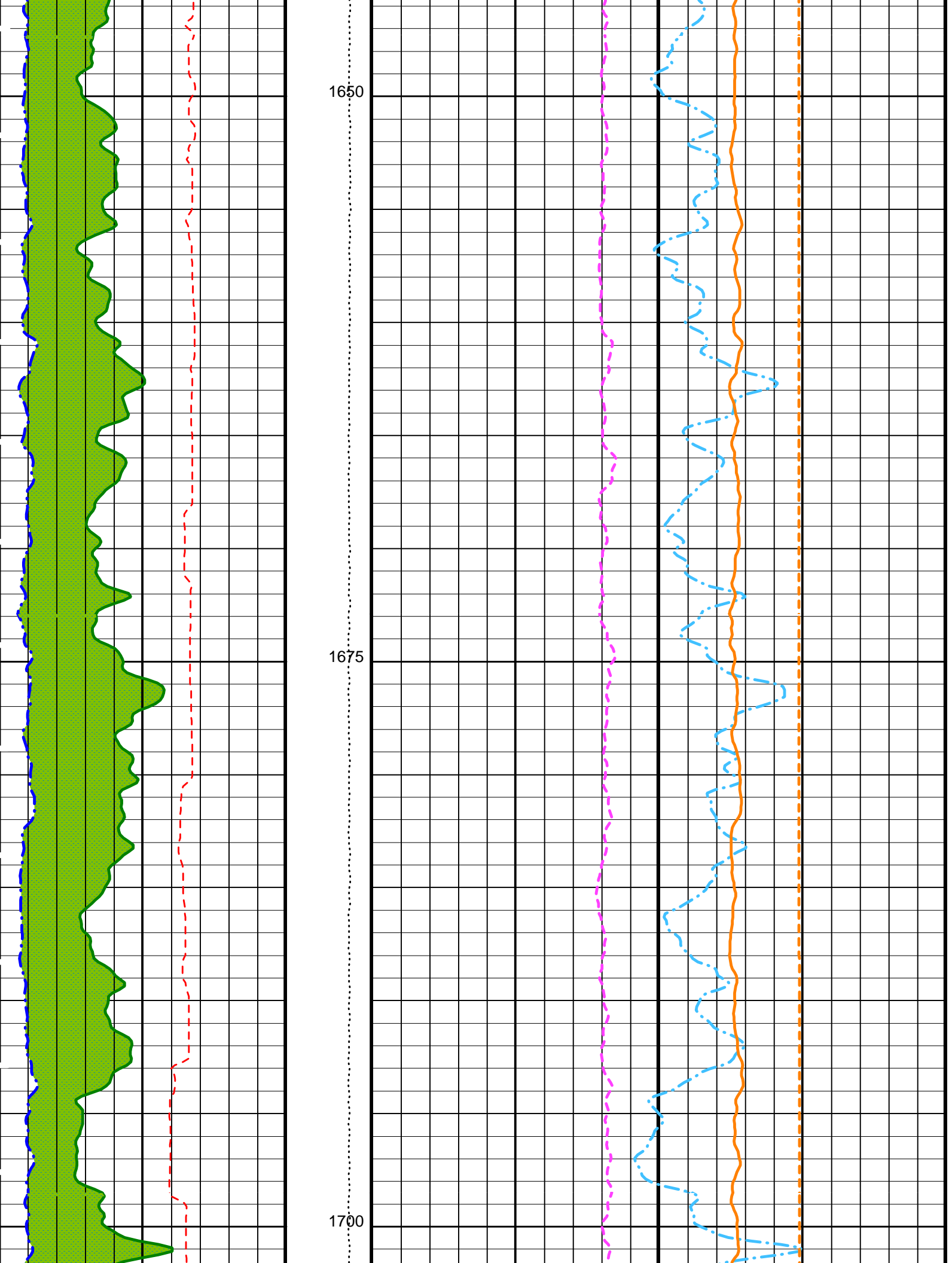
1500

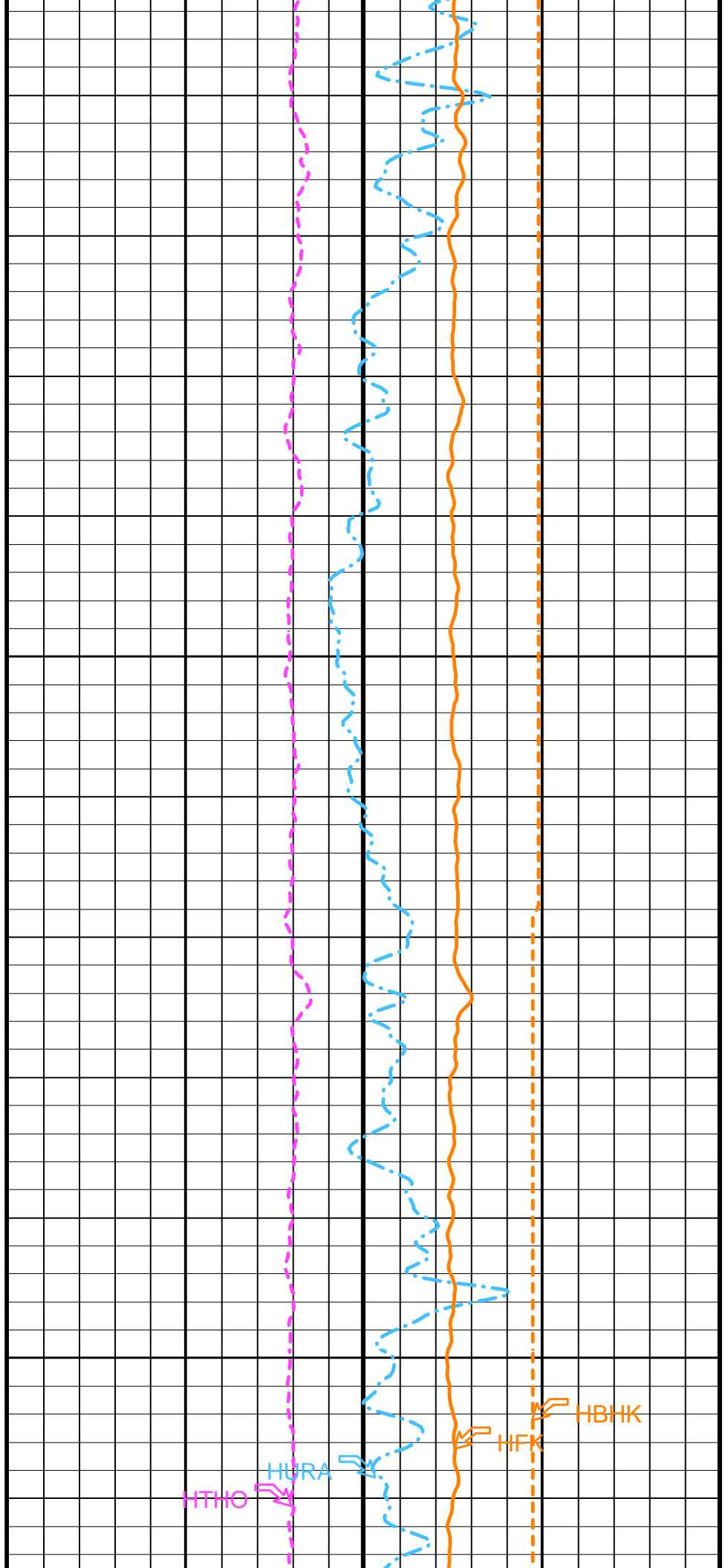
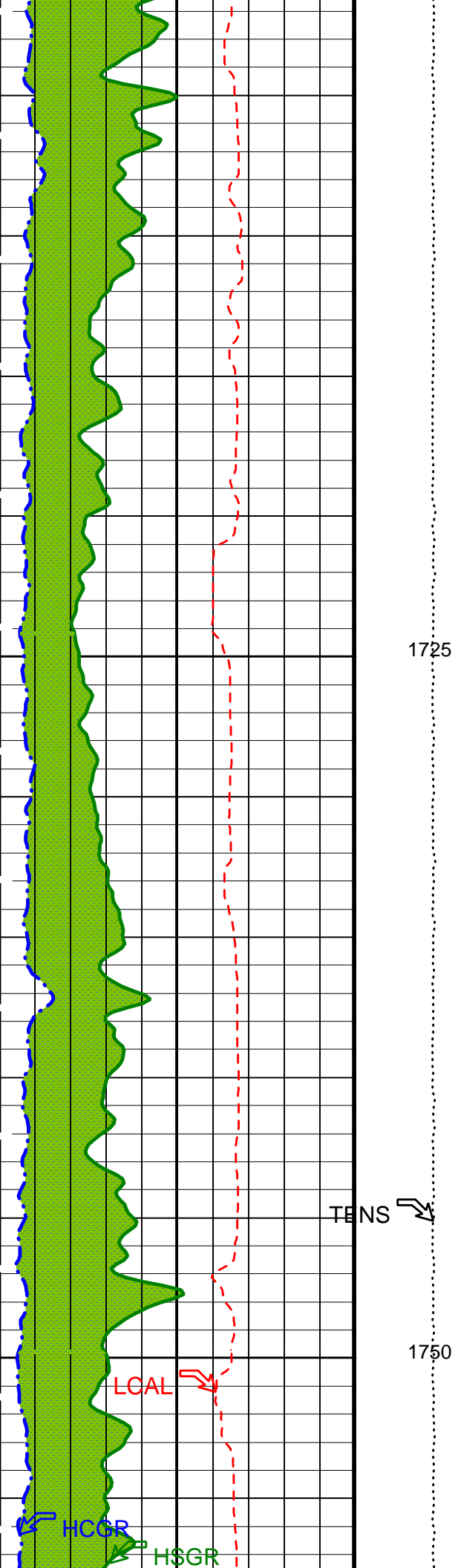
1525

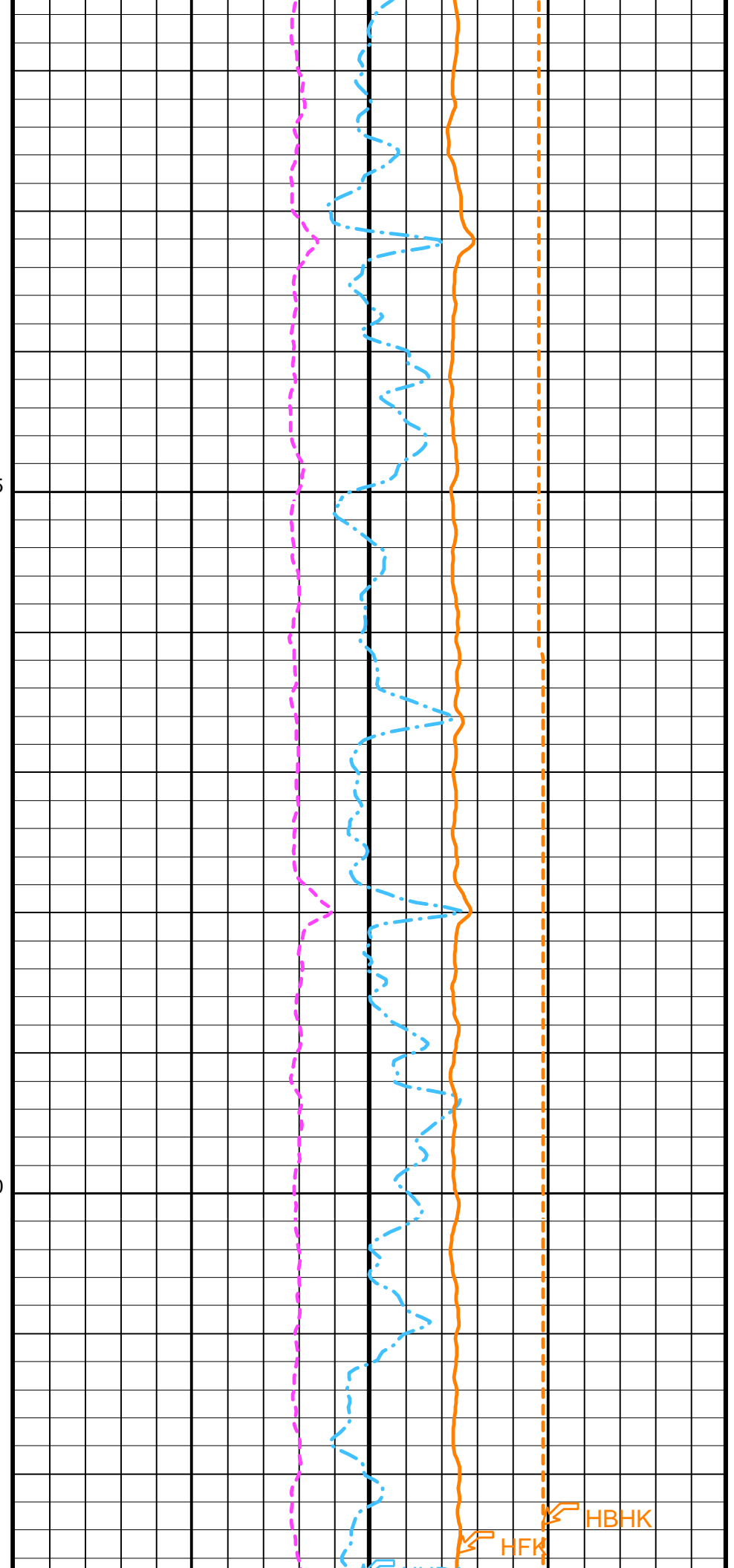
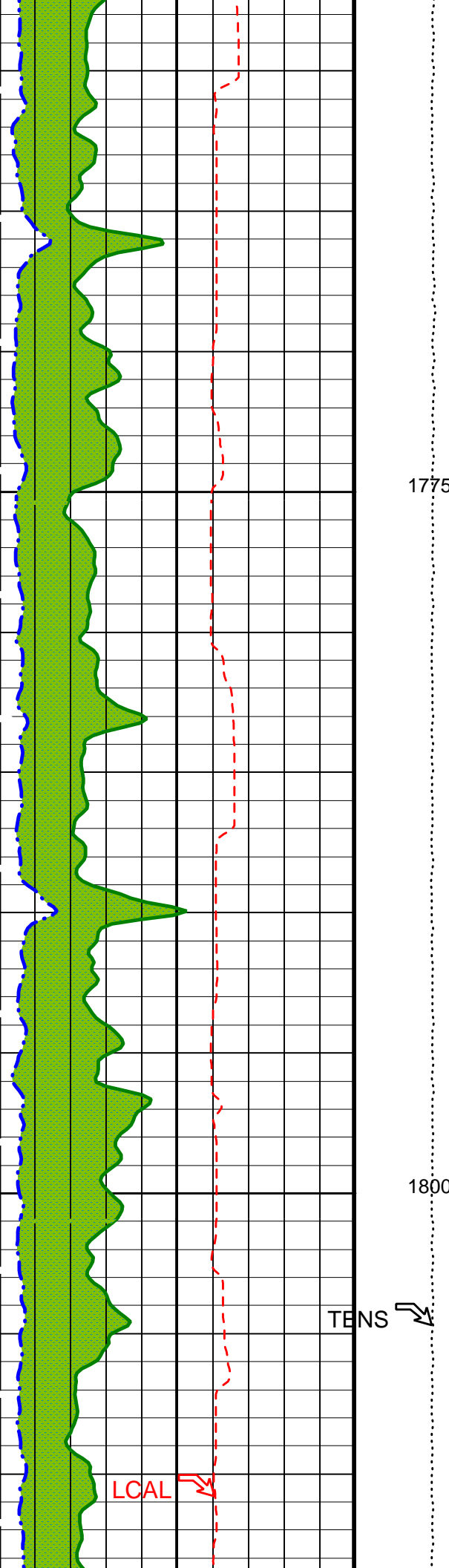


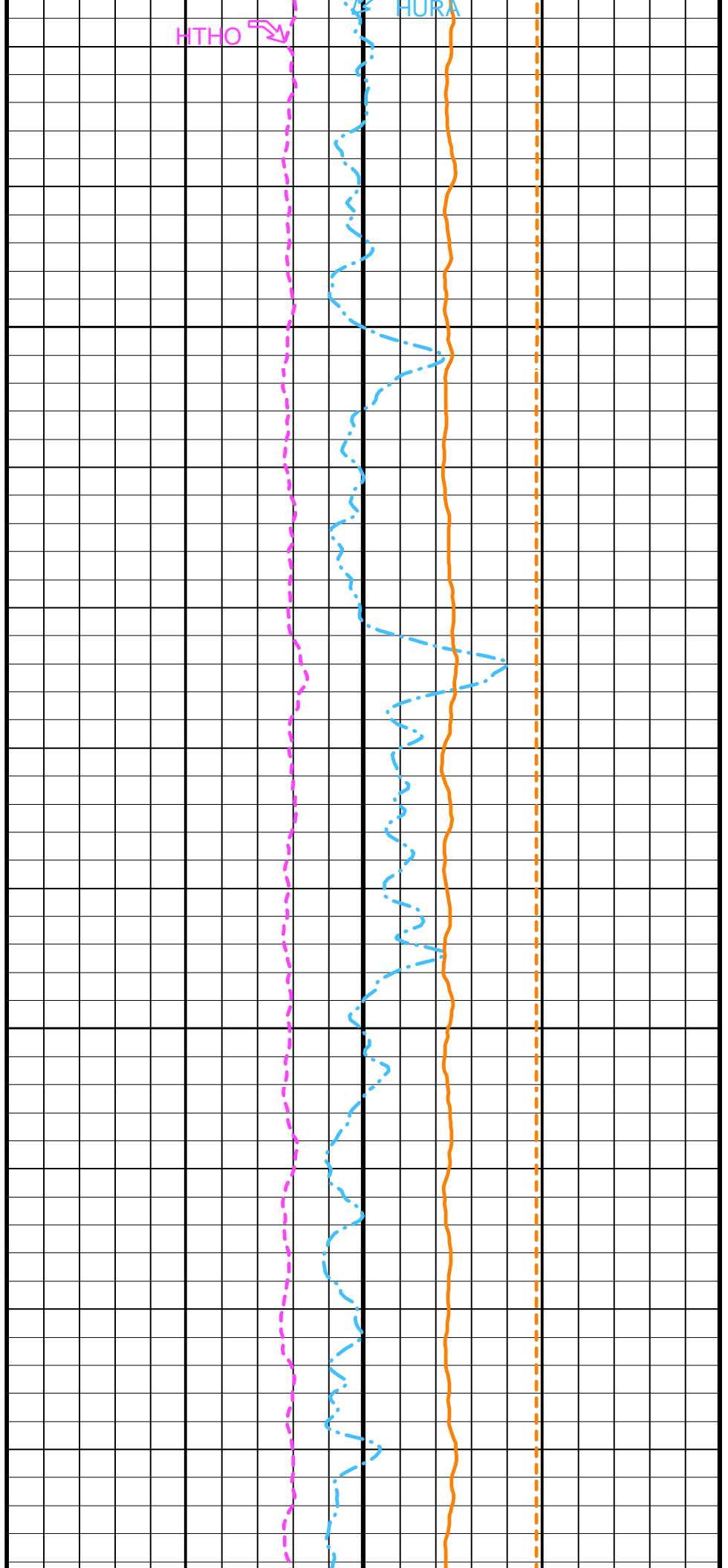
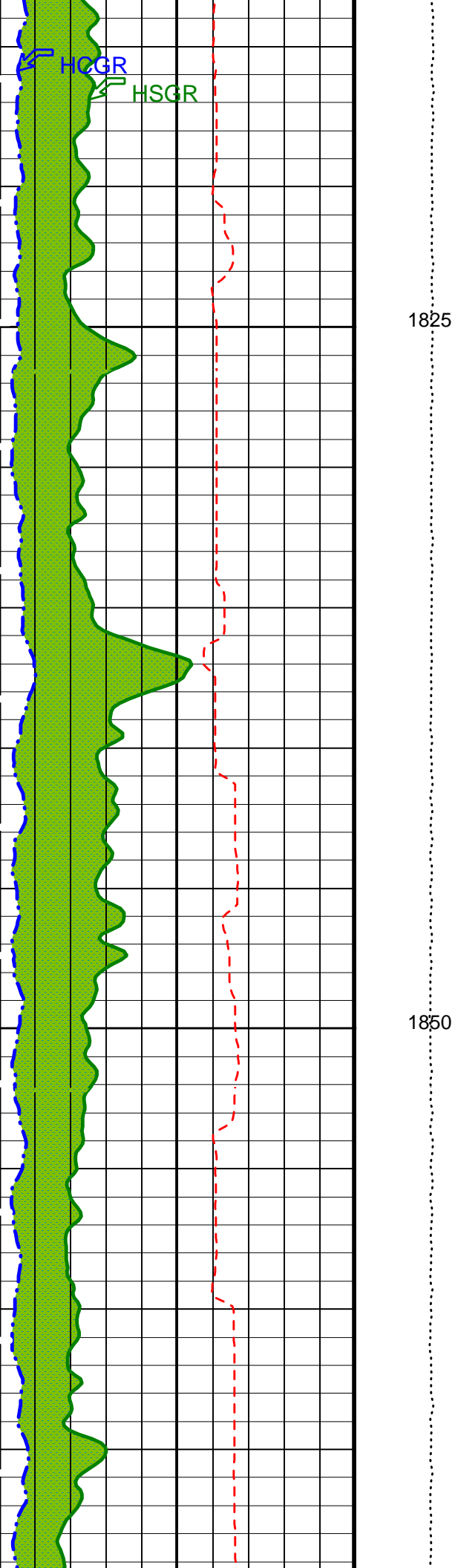


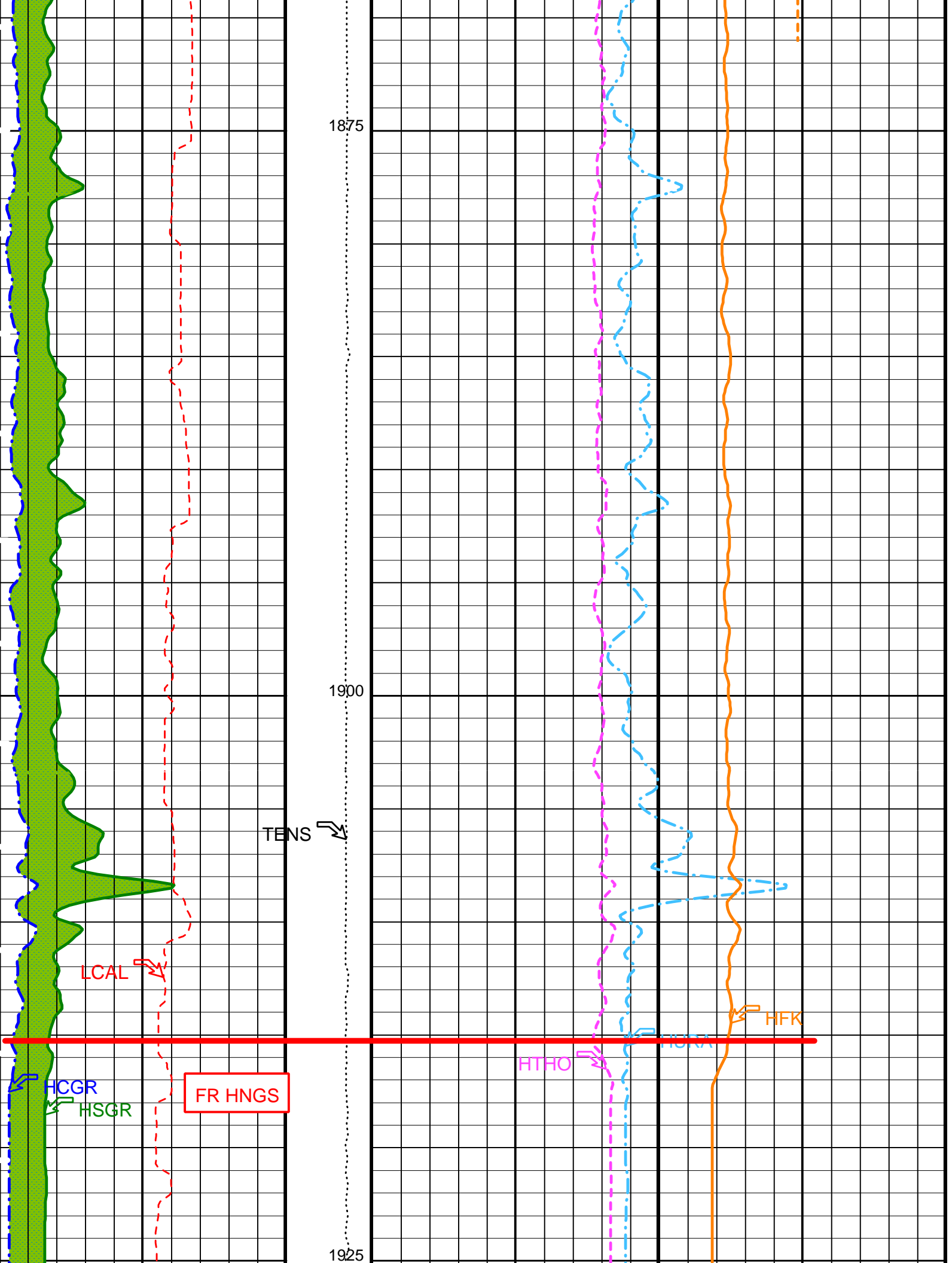


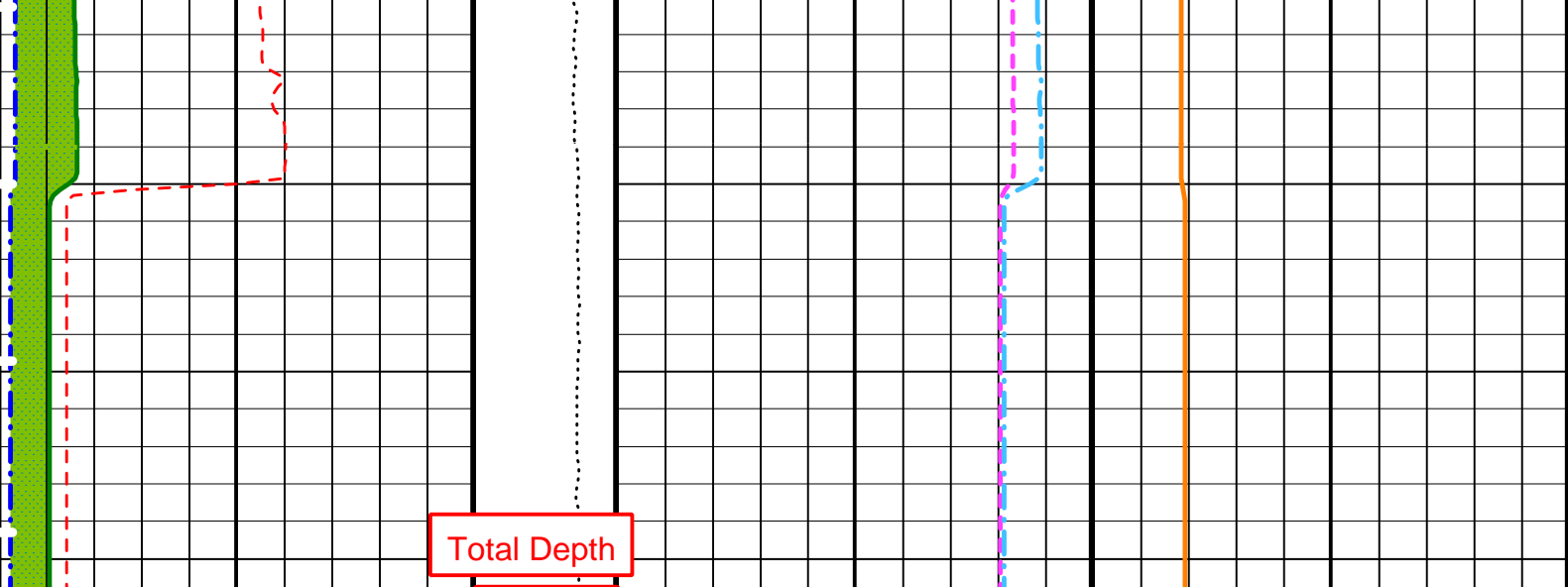












HLDS Caliper (LCAL) (IN)	0	20	Tension (TENS) (LBF)	10000	0	HNGS Thorium (HTHO) (PPM)	5	25	HNGS Potassium (HFK)	-0.01	(---)	0.04
HNGS Computed Gamma Ray (HCGR) (GAPI)	0	100				HNGS Uranium (HURA) (PPM)	-5					10
Area1 From HCGR to HSGR			HNGS Borehole Potassium (HBHK)									
			-0.05 (---) 0.05									
HNGS Spectroscopy Gamma Ray (HSGR) (GAPI)	0	100										

PIP SUMMARY

Time Mark Every 60 S

### Parameters

DLIS Name	Description	Value	
DIT-E: Dual Induction - E			
BHS	Borehole Status	OPEN	
GCSE	Generalized Caliper Selection	LCAL	
APS-BA: Accelerator-Porosity Tool			
BHS	Borehole Status	OPEN	
GCSE	Generalized Caliper Selection	LCAL	
HNGS-BA: Hostile Natural Gamma Ray Sonde			
BAR1	HNGS Detector 1 Barite Constant	1	
BAR2	HNGS Detector 2 Barite Constant	1	
BHK	HNGS Borehole Potassium Correction Concentration	0	
BHS	Borehole Status	OPEN	
CSD1	Inner Casing Outer Diameter	0	IN
CSD2	Outer Casing Outer Diameter	0	IN
CSW1	Inner Casing Weight	0	LB/F
CSW2	Outer Casing Weight	0	LB/F
DBCC	HNGS Barite Constant Correction Flag	NONE	
GCSE	Generalized Caliper Selection	LCAL	
H1P	HNGS Detector 1 Allow/Disallow In Processing	ALLOW	
H2P	HNGS Detector 2 Allow/Disallow In Processing	ALLOW	
HABK	HNGS Borehole Potassium Running Average	-0.00298869	
HALF	HNGS Alpha Filter Length	60	IN
HCRB	HNGS Apply Borehole Potassium Correction	NONE	
HMWM	Mud Weighting Material	NATU	
HNPE	HNGS Processing Enable	YES	
S1BI	HNGS Detector 1 Calibration Bismuth Count Rate	1.3	CPS
S2BI	HNGS Detector 2 Calibration Bismuth Count Rate	1.3	CPS
SGRC	HNGS Standard Gamma-Ray Correction Flag	YES	
TPOS	Tool Position	ECCE	
VBA1	HNGS Detector 1 Variable Barite Factor Running Average	0.981098	
VBA2	HNGS Detector 2 Variable Barite Factor Running Average	1.0123	
System and Miscellaneous			
BS	Bit Size	11.437	IN
DFD	Drilling Fluid Density	1.07	G/C3

# OP System Version: 10C0-306

MCM

DIT-E	10C0-306	DTA-A	10C0-306
HLDS	10C0-306	NPLC-B	10C0-306
APS-BA	10C0-306	HNGS-BA	10C0-306
DTC-H	10C0-306		

## Output DLIS Files

DEFAULT	PI_LDL_APS_NGS_007LUP	FN:8	PRODUCER	12-May-2002 17:59
TCOMBO_CSUT	PI_LDL_APS_NGS_007LUP	FN:9	PRODUCER	12-May-2002 17:59

Company: Lamont Doherty

**Schlumberger**

Well: ODP Leg 202, Site 1239A

Field: Carnegie Ridge

Country: Ecuador

Ocean: Pacific Ocean

Natural Gamma Ray Log