

Well: ODP Leg 204 Site 1245A
Field: Hydrate Ridge
Ocean: Pacific
State: Oregon

Depth logged:	882.0 m	To	1265.2 m	Mag decl:	66.41 deg.	Other services:
Date logged:	18-Jul-02	To	18-Jul-02	Mag dip:	17.70 deg.	DWOB, DTOR, MVC

Bore hole record

Casing record

Hole size	from	to	Size	Density	from	to
9.875 in.	882.0 m	1266.5 m				

[illegible]

Surface equipment	Software record
<p>1. Surface equipment</p> <p>2. Software record</p>	<p>1. Surface equipment</p> <p>2. Software record</p>

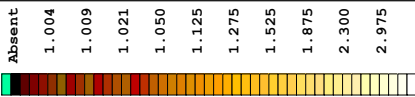
Unit	Downhole Lab	IDEAL W/s	7.0_c2		
Depth system	PDE	SPM	7_0c_09		
		LWD	6.1, 8.0, 6.9		
		MMWD	6.1		

IDF

Graphics File Created: 13-Aug-2002 12:48

PIP SUMMARY

— Ring Samples
Gamma Ray Samples



Deep Button Image (R3IM) (OHMM)



**Medium Button Image (R2IM)
(OHMM)**



Shallow Button Image (R1IM) (OHMM)



RAB Gamma Ray (GR_RAB)
(GAPI)



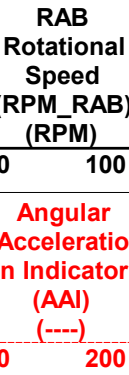
Medium Button Resistivity (RES_BM)
.2 (OHMM) 200



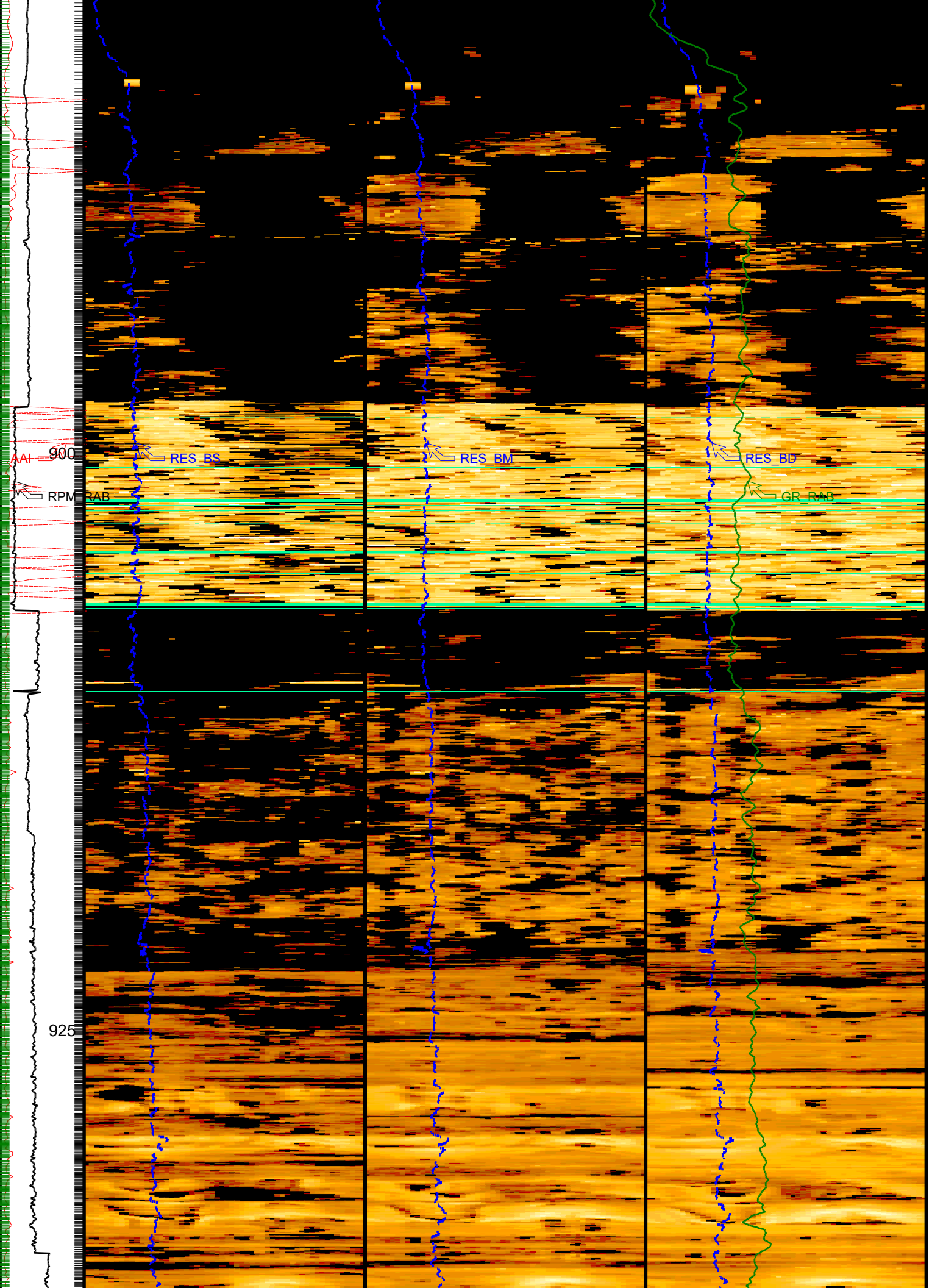
Shallow Button Resistivity (RES_BS)
(OHMM)

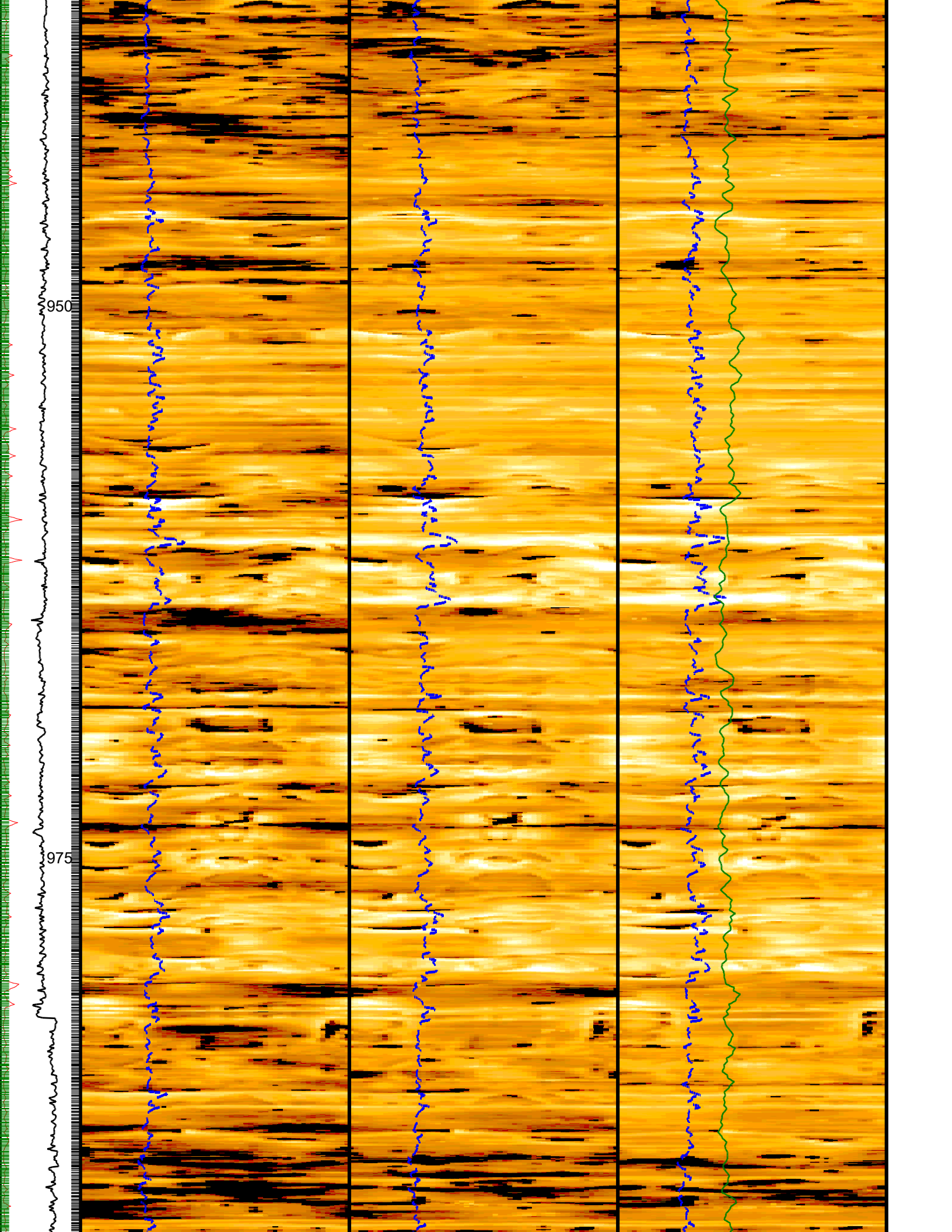


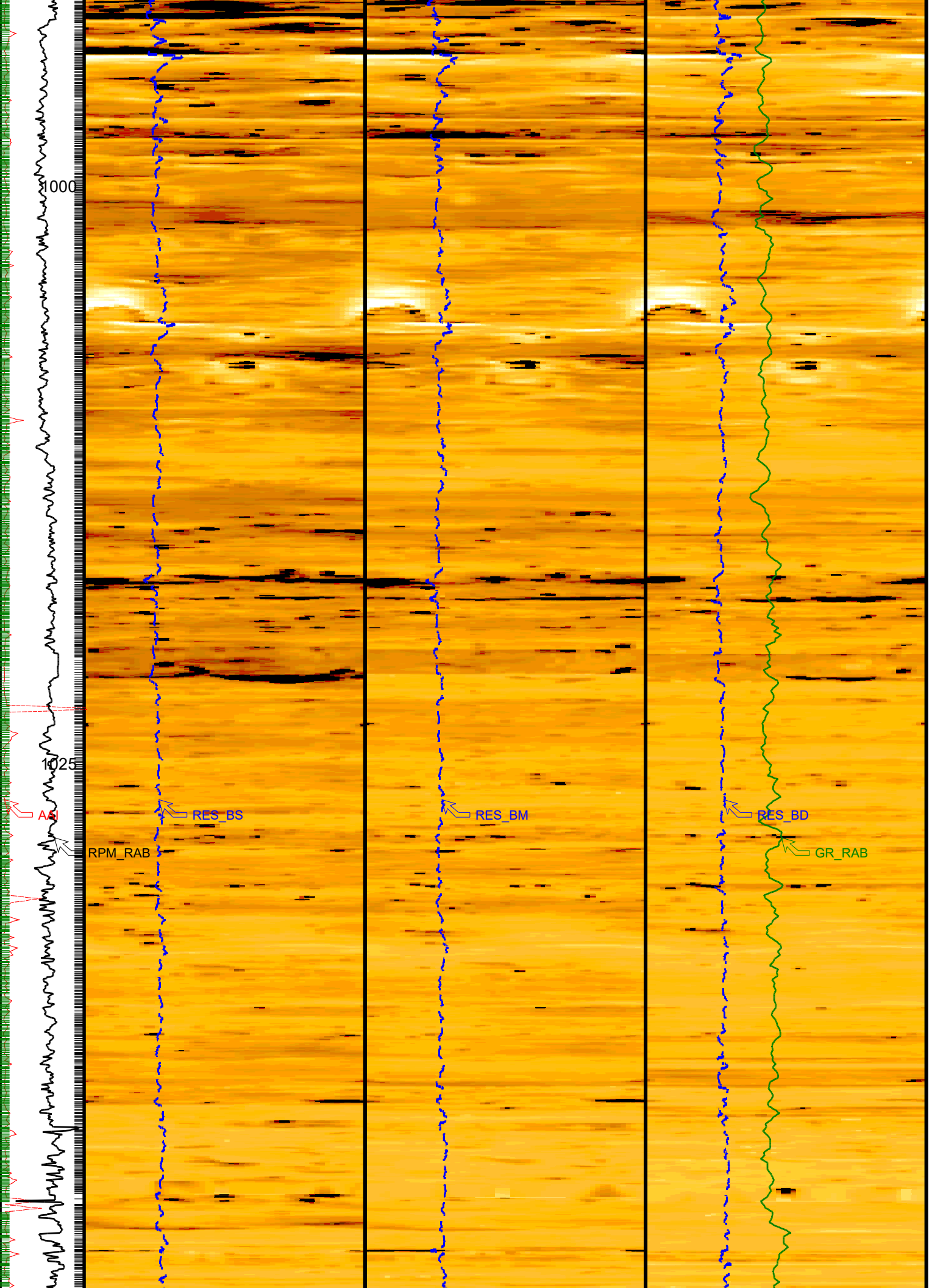
Deep Button Resistivity (RES_BD)
2 (OHMM) 20

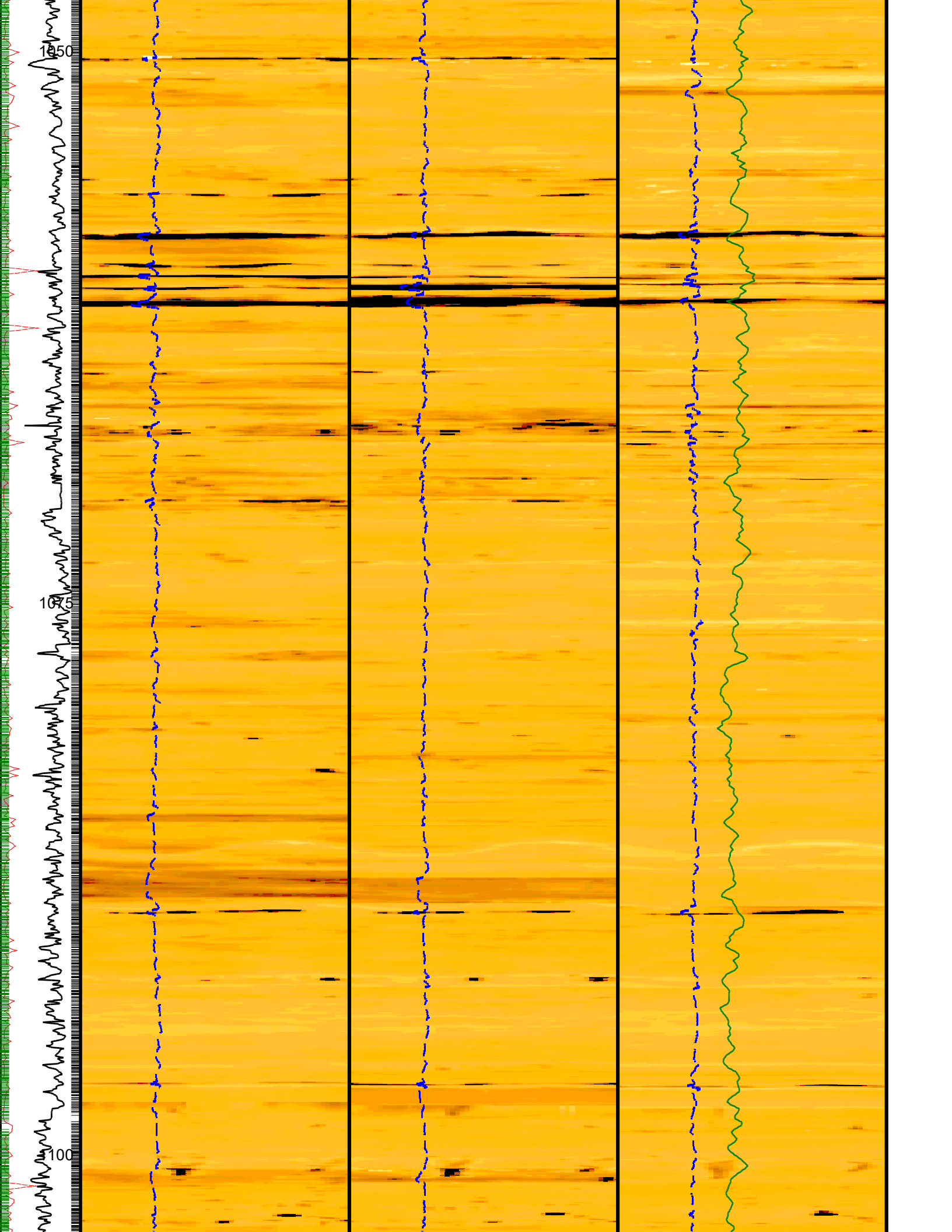


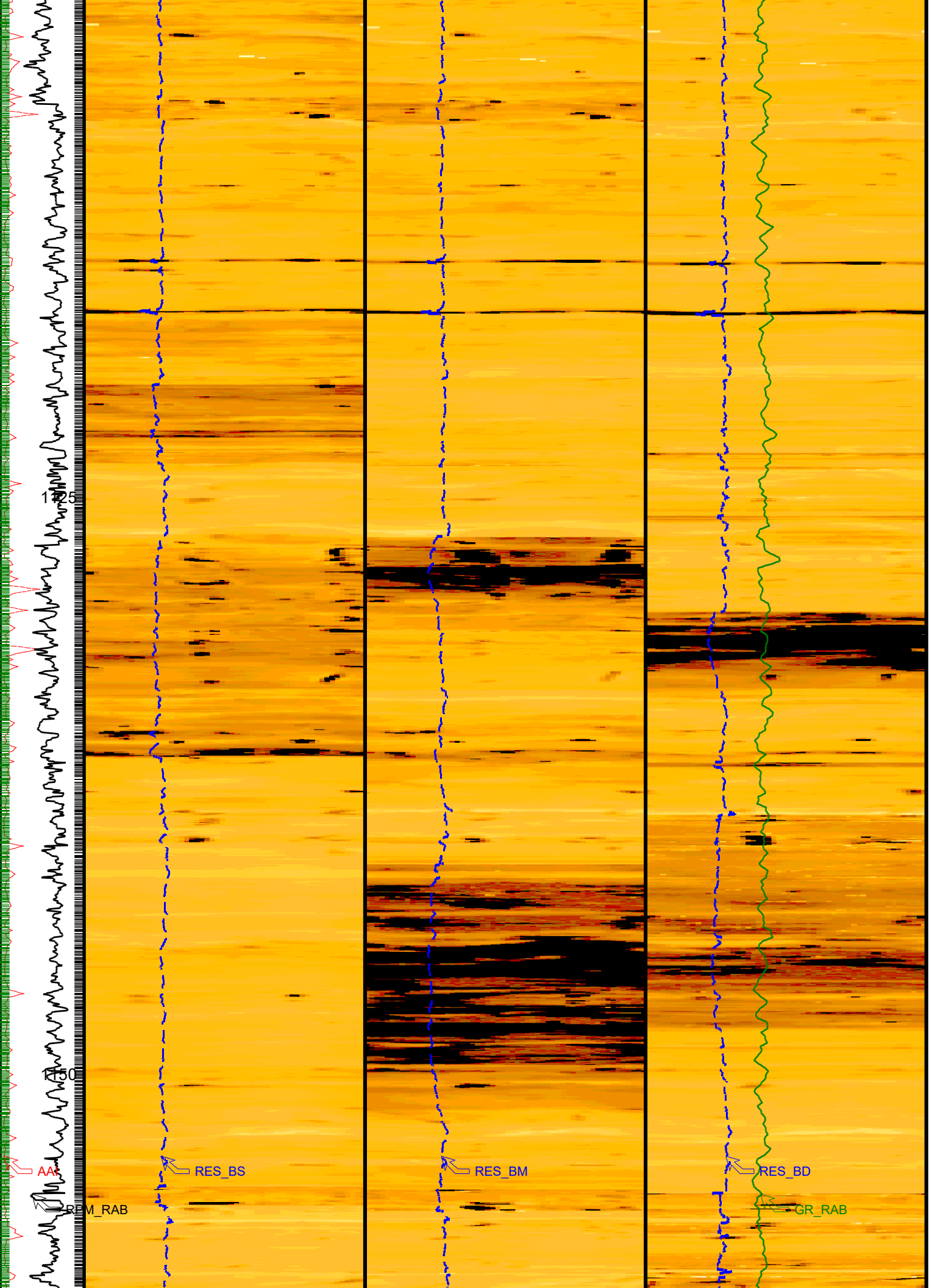
RAB Rotational Speed RPM_RAB) (RPM)	Angular Acceleration Indicator (AAI) (----
0	0
100	200

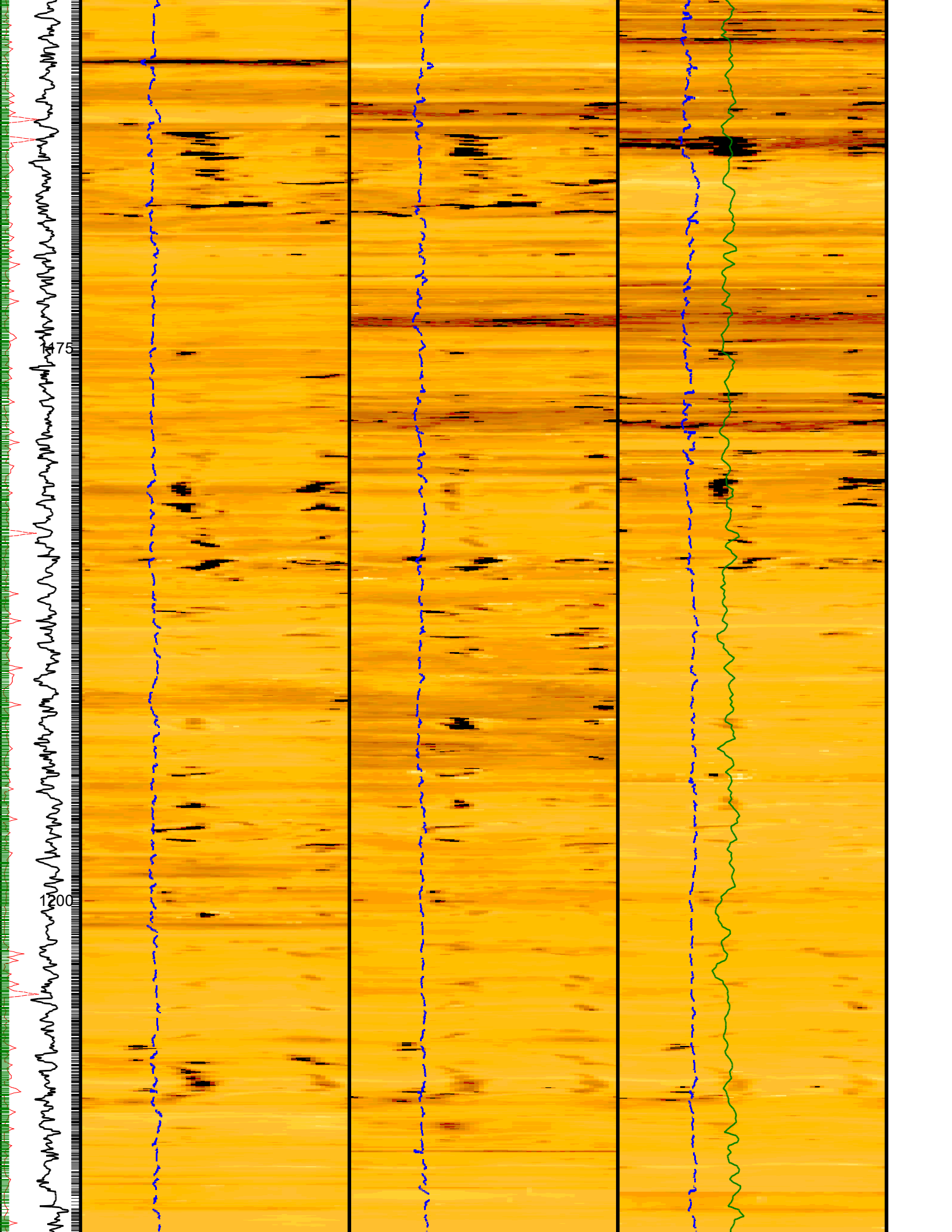


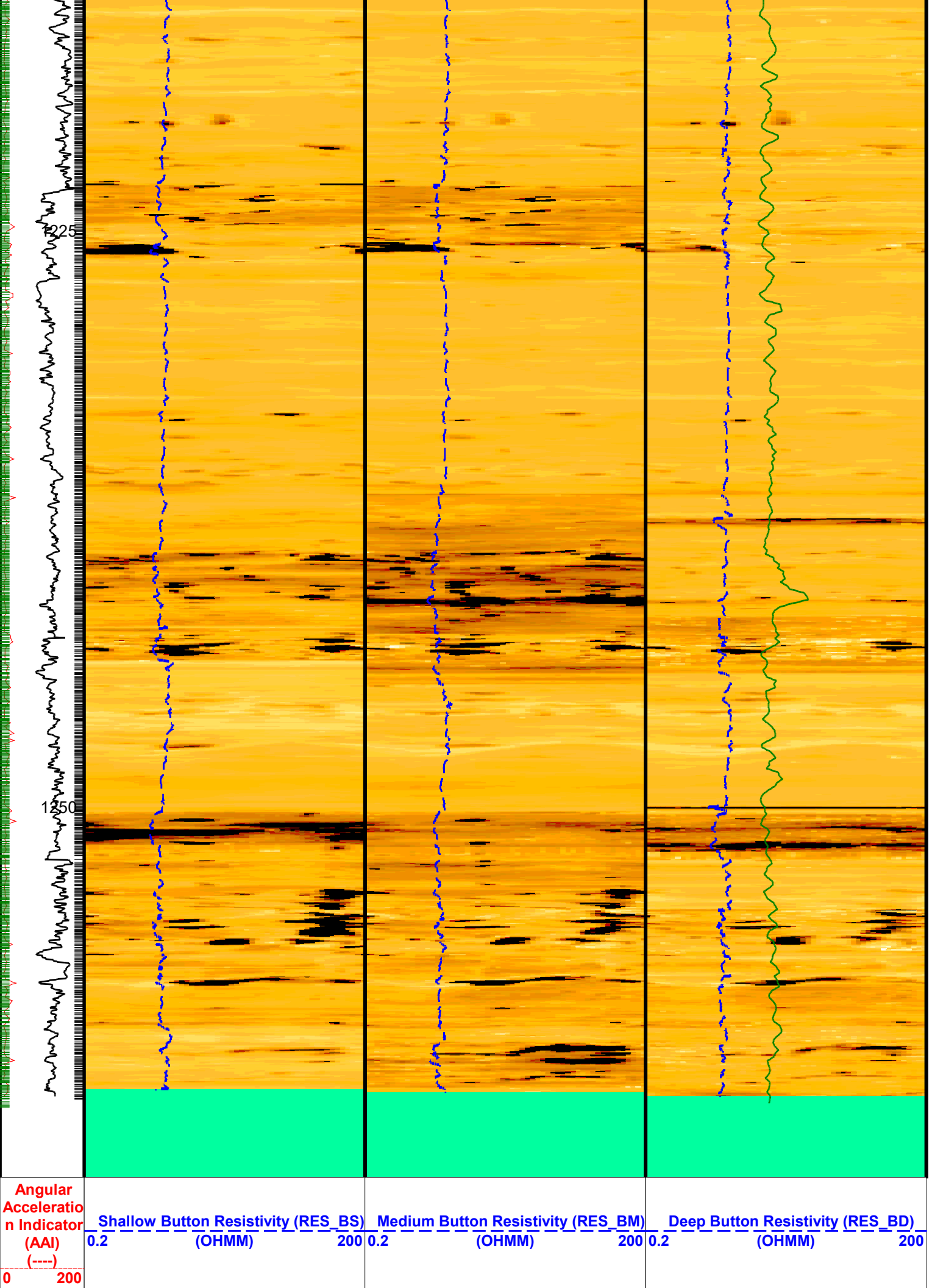


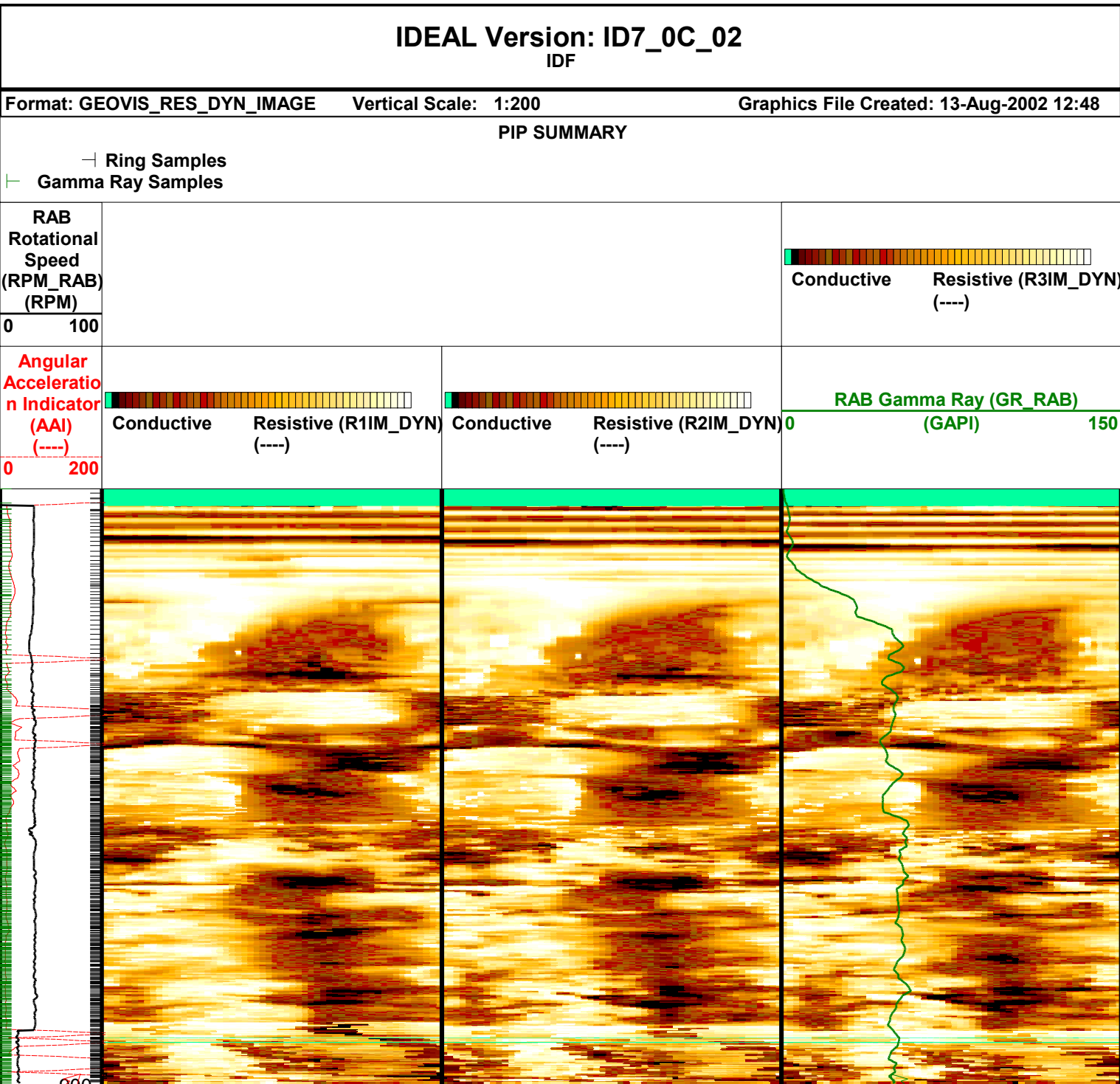
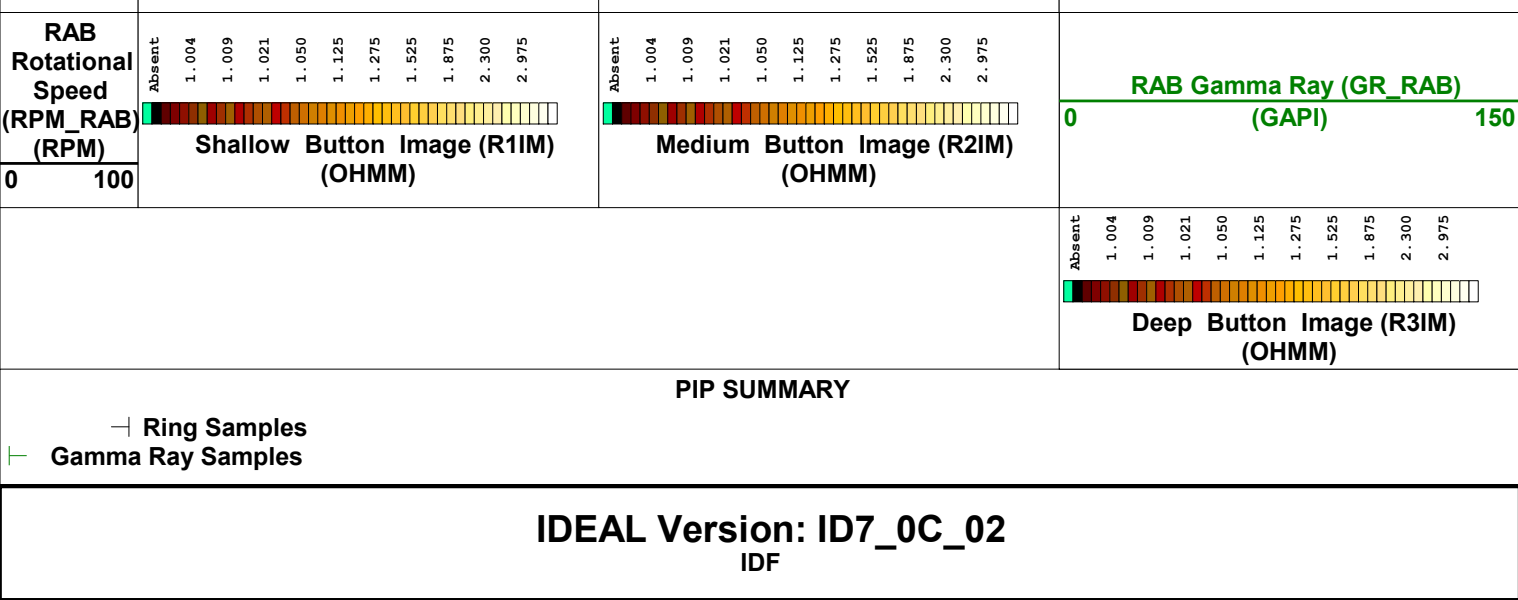


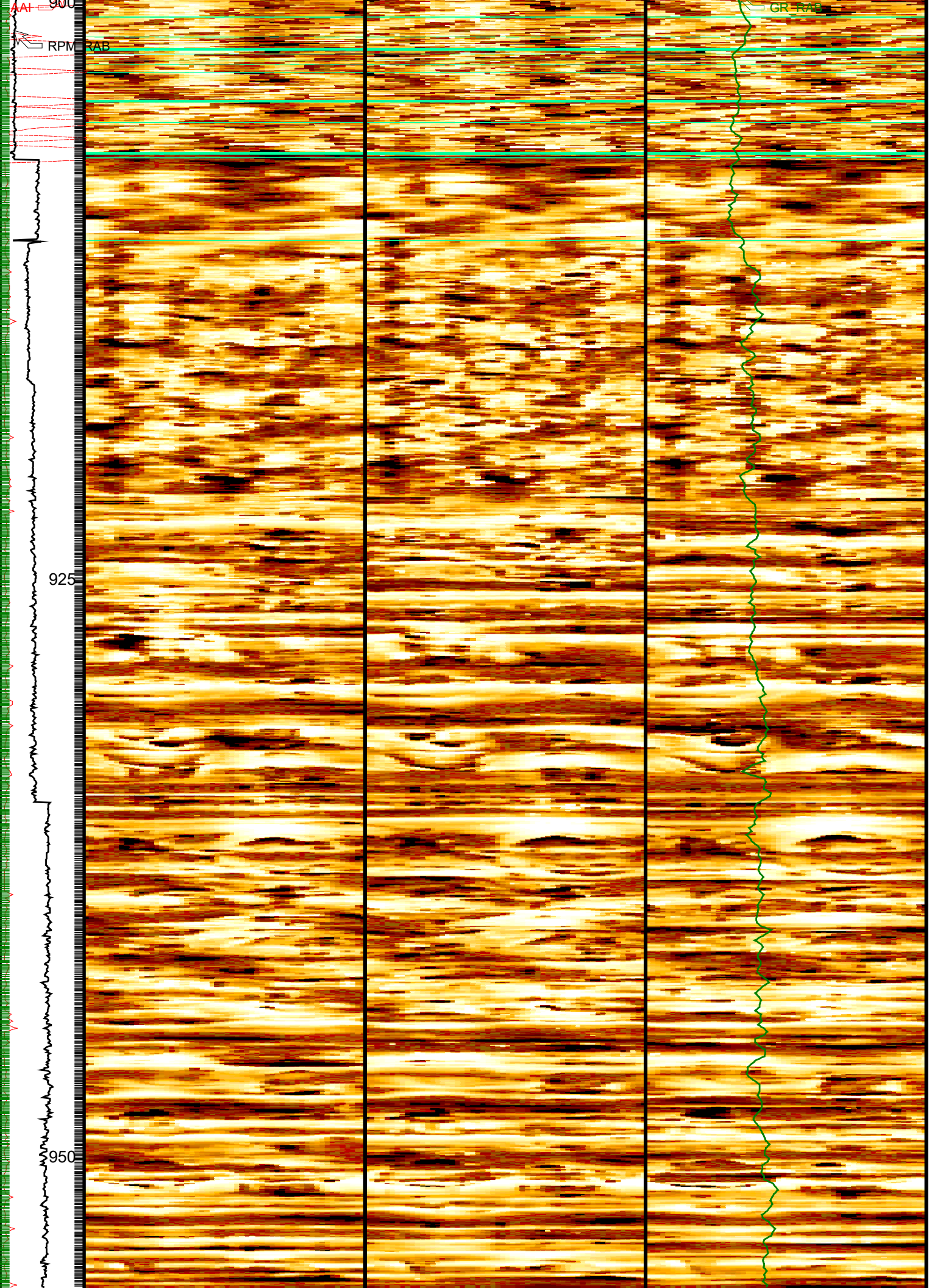


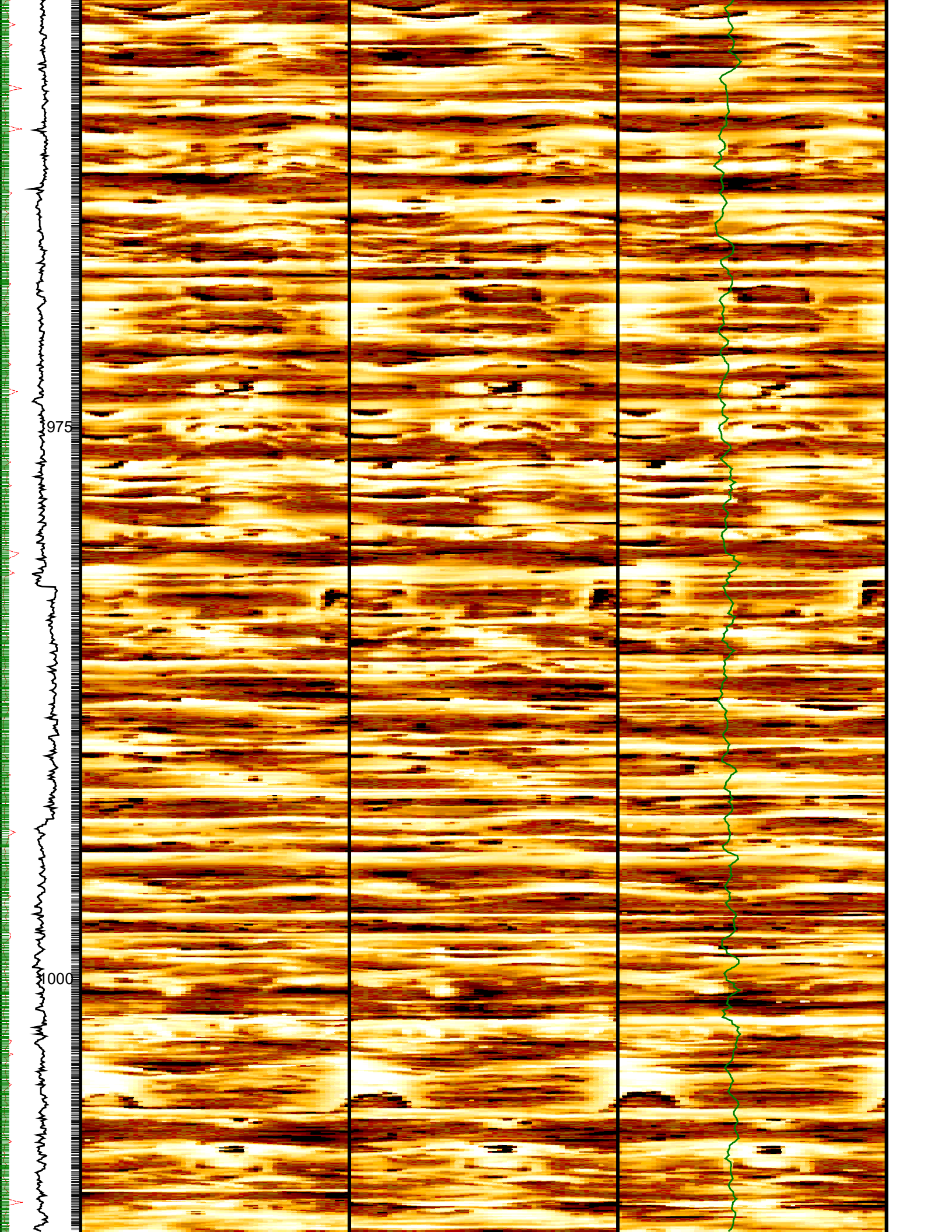


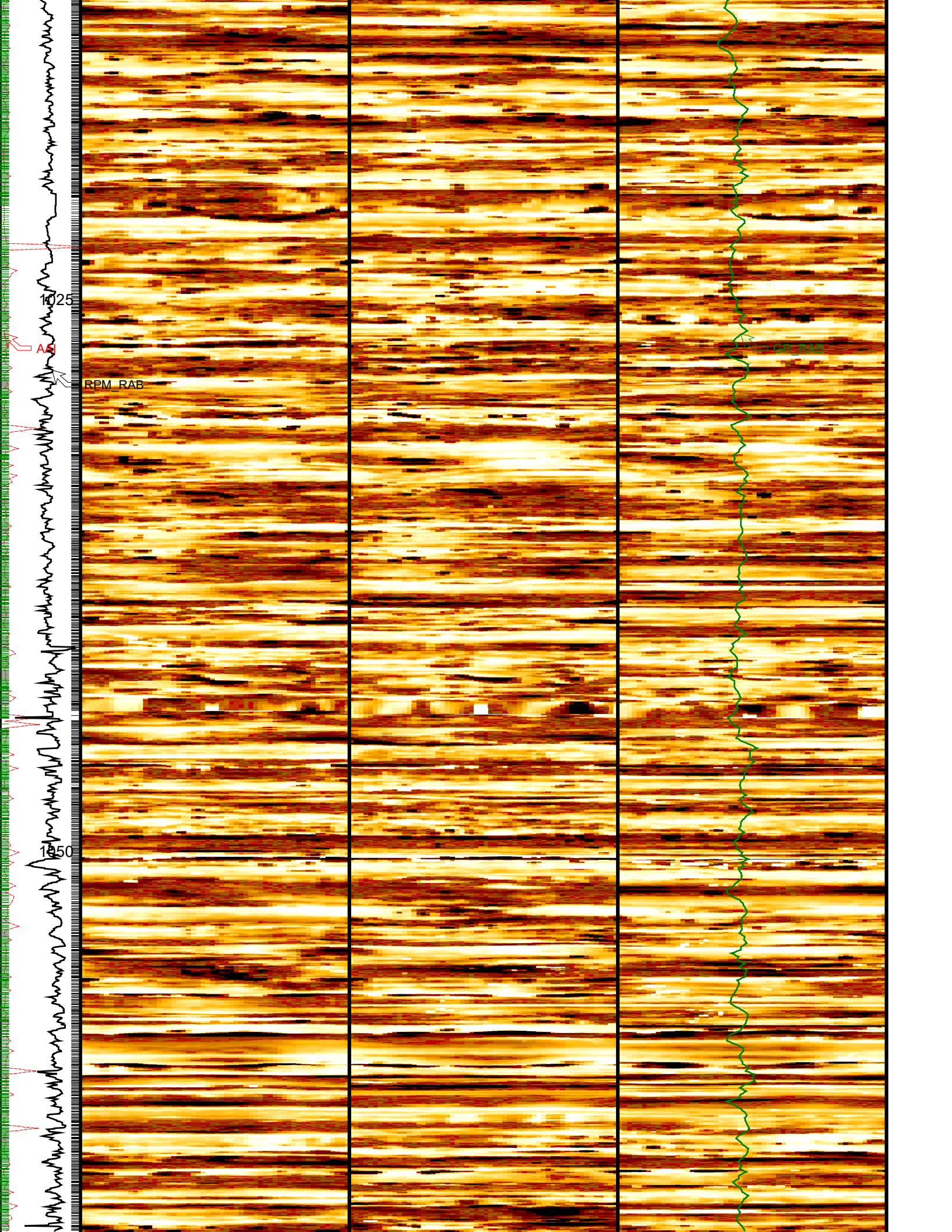


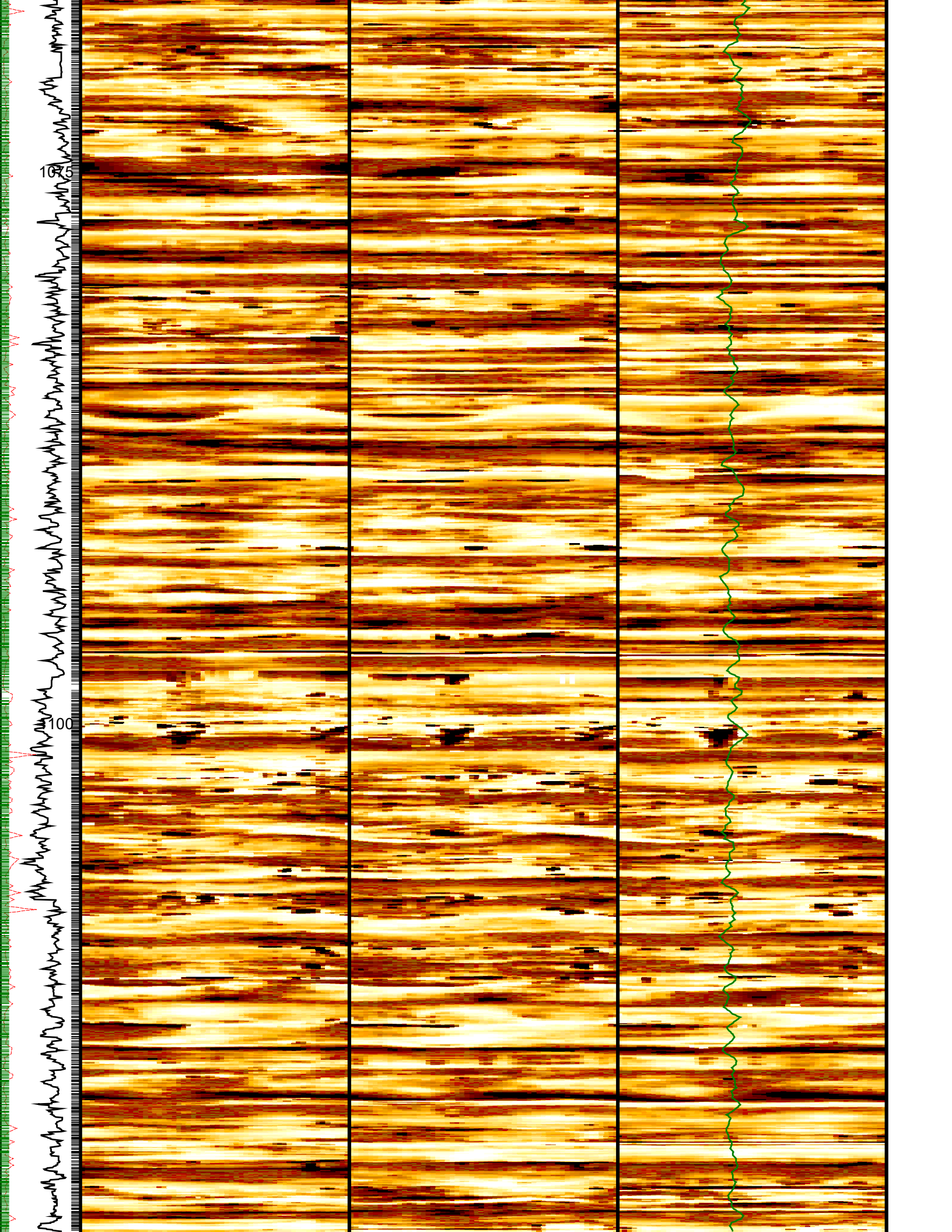


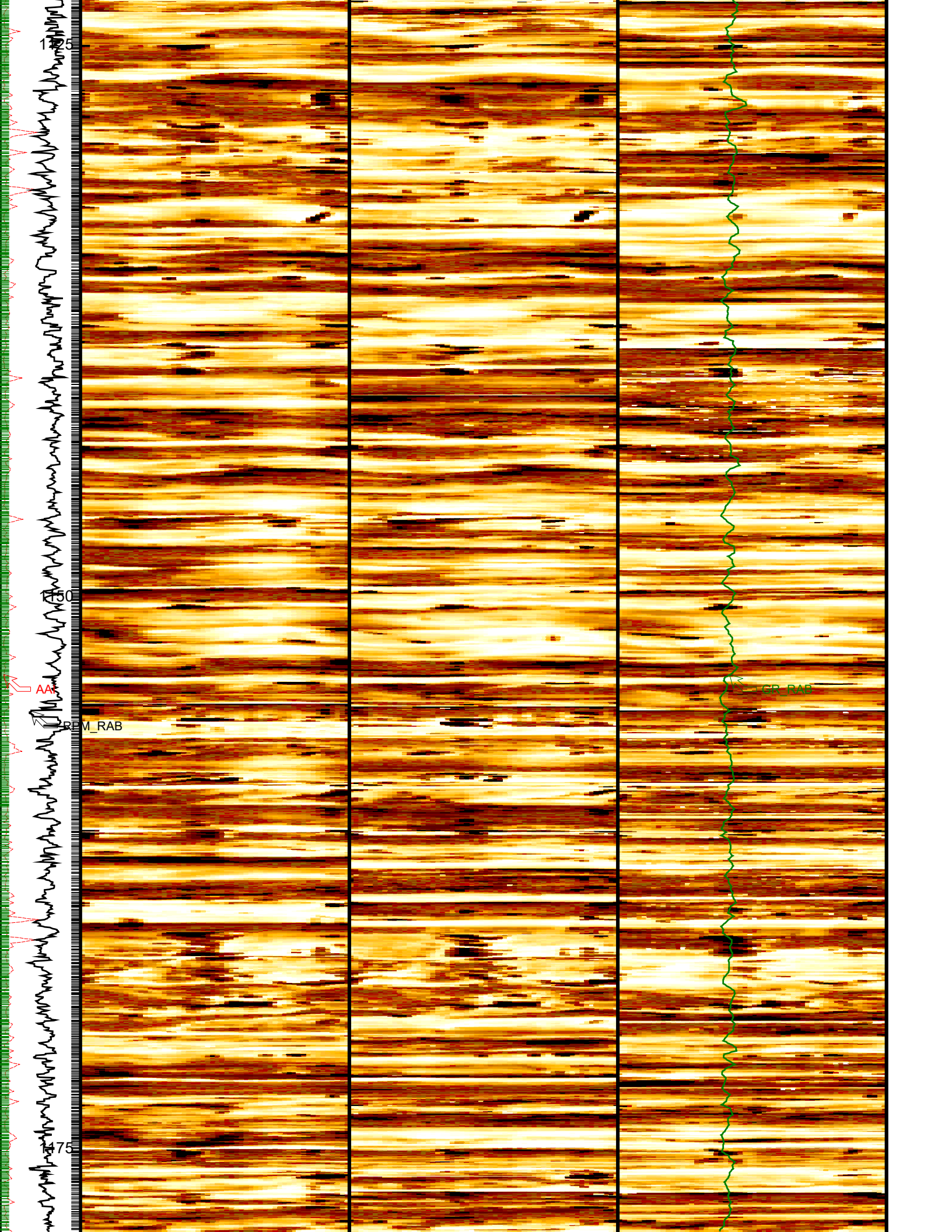


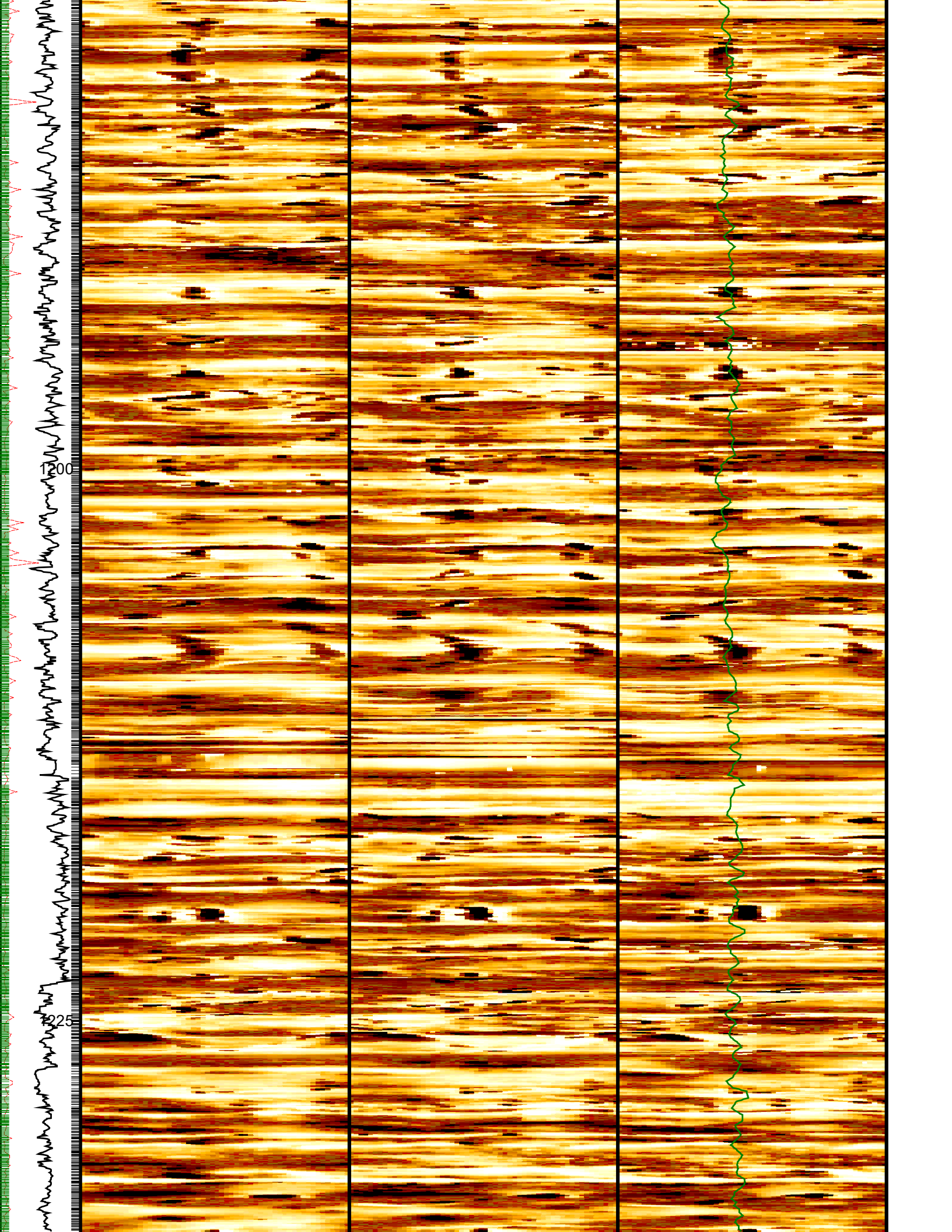


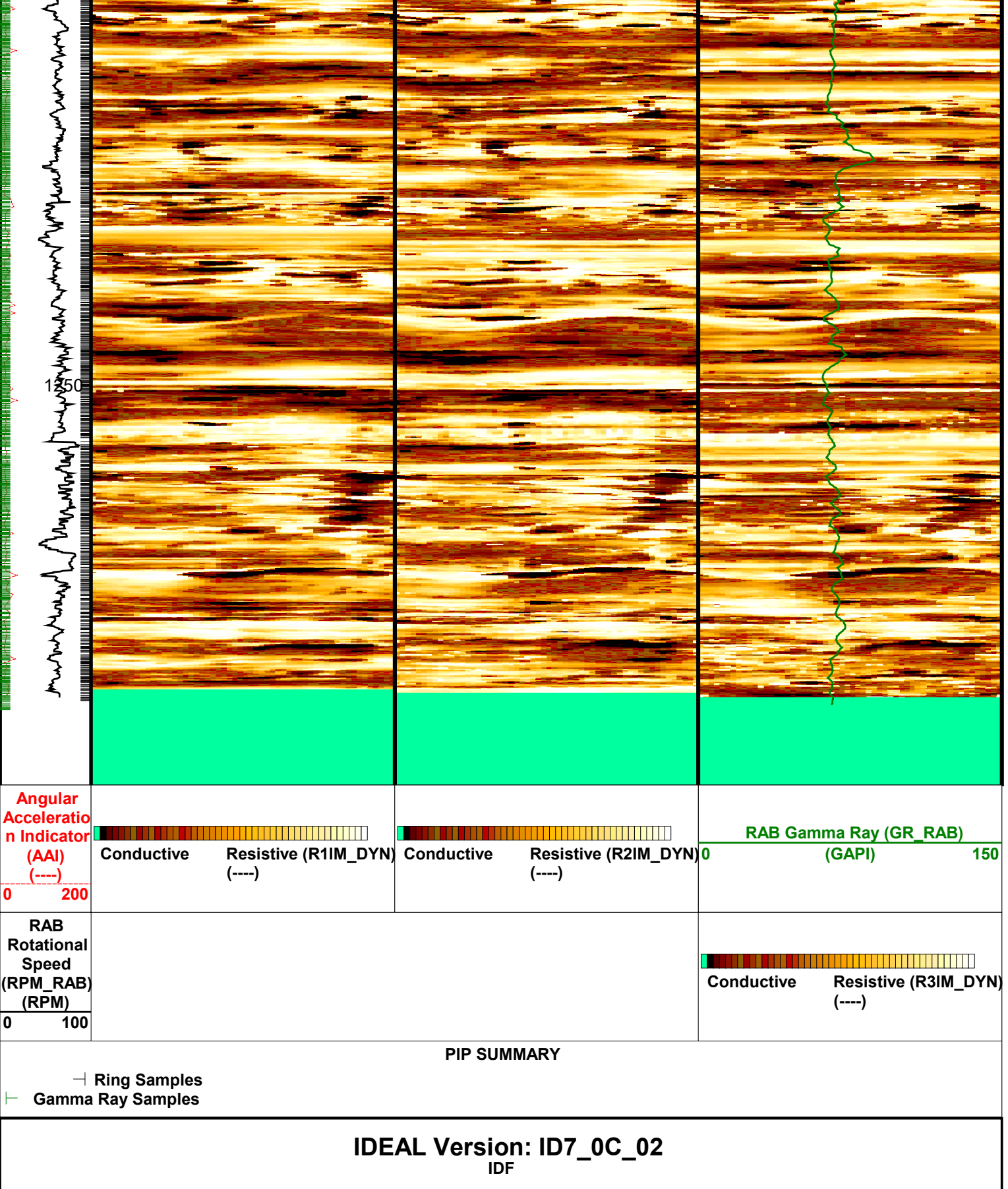












State: **Oregon**

GeoVISION Resistivity - Image

1 cm : 2 m

Measured Depth