

Company: Lamont Doherty

Lamont Doherty

Well: ODP Leg 204 Site 1249A

ODP Leg 204 Site 1249A

Field: Hydrate Ridge

Hydrate Ridge

Ocean: **Pacific** State: **Oregon**

Pacific State: Oregon

GeoVISION Resistivity - Image

1 cm : 2 m

Measured Depth

Ocean:		Pacific	
Field:		Hydrate Ridge	
Location:		44.57041 E ; 125.14737 W	
Well:		ODP Leg 204 Site 1249A	
Company:		Lamont Doherty	

<div> <div>GeoVISION Resistivity - Image</div> <div>1 cm : 2 m</div> <div>Measured Depth</div> </div>			
Total depth:	878.6 m	K.B.	11 m
Spud date:	21-Jul-02	G.L.	-777.6 m
Runs:	1 To 1	D.F.	11 m
Permanent datum:	Mean Sea Level	Elev.:	0 m
Log measured from:	Drill Floor		11 m
Depth reference:	Driller's Pipe Tally		above Perm. datum
Service Order no.		Longitude	Latitude
40007682		-125.14737	+44.57041

Depth logged: 787.4 m To 875.3 m		Mag decl: 66.41 deg.		Other services: DWOB, DTOR, MVC	
Date logged: 21-Jul-02 To 21-Jul-02		Mag dip: 17.70 deg.			
Bore hole record				Casing record	
Hole size	from	to	Size	Density	from to
9.875 in.	787.4 m	878.6 m			
Type	Mud record from	to	Min	Max	Borehole deviation record from to
Seawater	787.4 m	878.6 m	0 deg.	0 deg.	787.4 m 878.6 m
Surface equipment		Software record			
Unit	Downhole Lab	IDEAL W/s	7.0_c2		
Depth system	PDE	SPM	7_0c_09		
		LWD	6.1, 8.0, 6.9		
		MWD	6.1		

IDEAL Version: ID7_0C_02
IDF

IDF

Format: GEOVIS_RES_IMAGE

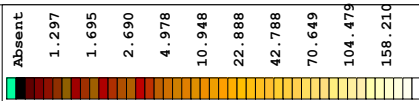
Vertical Scale: 1:200

Graphics File Created: 13-Aug-2002 13:21

PIP SUMMARY

— Ring Samples

Gamma Ray Samples



Deep Button Image (R3IM) (OHMM)

RAB Gamma Ray (GR_RAB)
(GAPI)

Deep Button Resistivity (RES_BD)
0.2 (OHMM) 200

**Medium Button Image (R2IM)
(OHMM)**

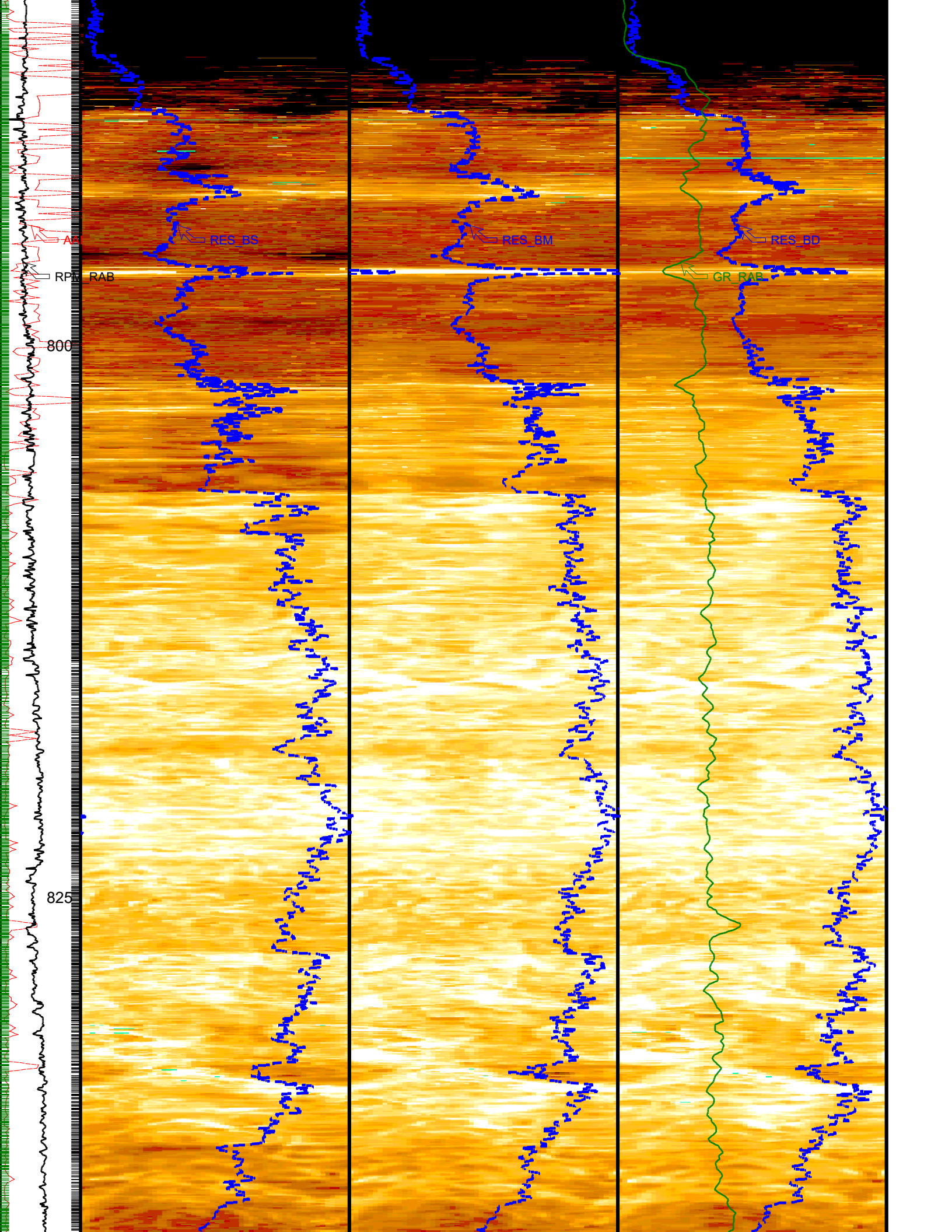
Medium Button Resistivity (RES_BM)
0.2 (OHMM) 200

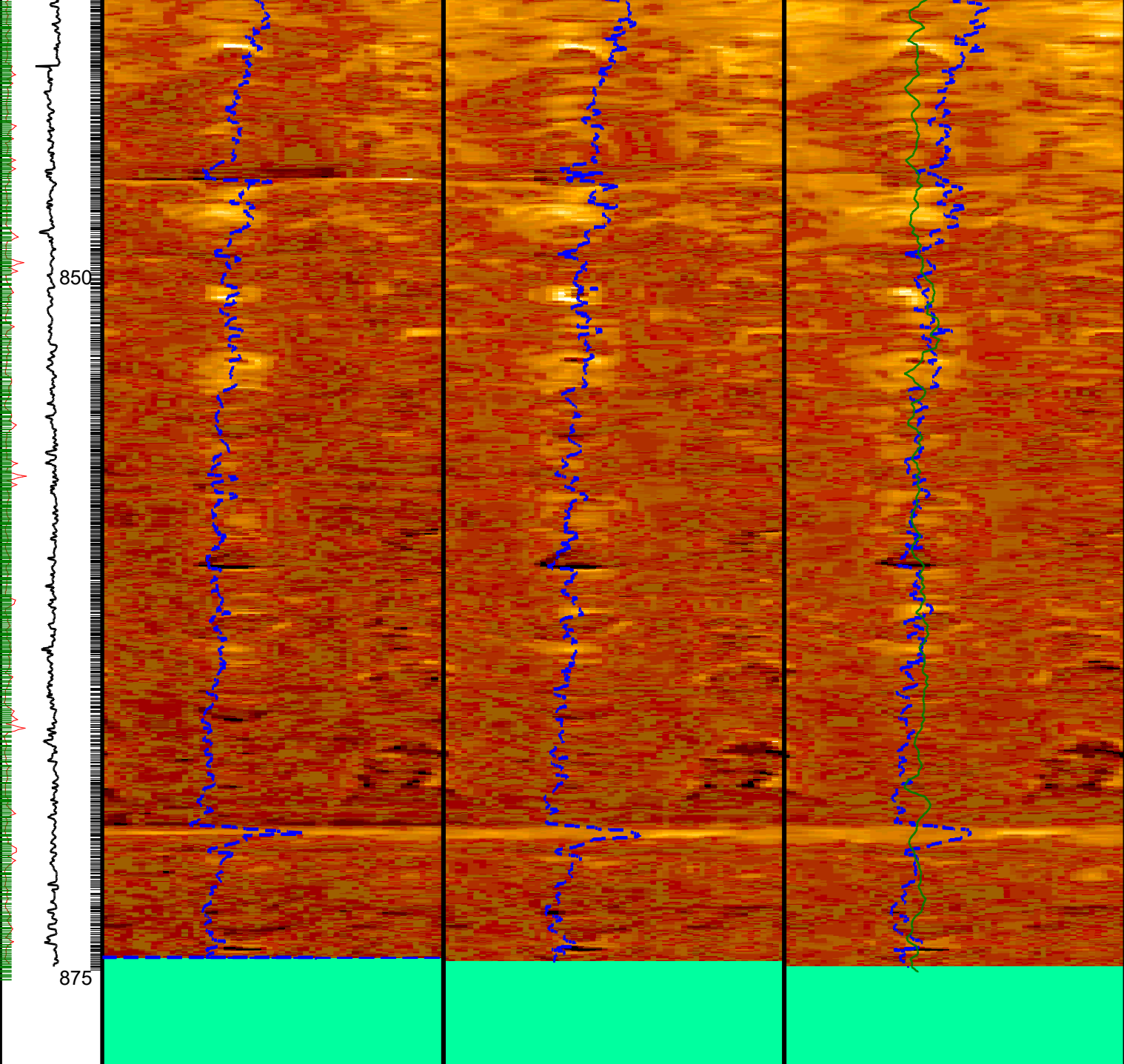
Shallow Button Image (R1IM) (OHMM)

Shallow Button Resistivity (RES_BS)
0.2 (OHMM) 200

RAB Rotational Speed (RPM_RAB) (RPM)
0
100

Angular Acceleration Indicator (AAI) (---)





Angular Acceleration Indicator (AAI) (----) 0 200	Shallow Button Resistivity (RES_BS) 0.2 (OHMM) 200	Medium Button Resistivity (RES_BM) 0.2 (OHMM) 200	Deep Button Resistivity (RES_BD) 0.2 (OHMM) 200
---	--	---	---

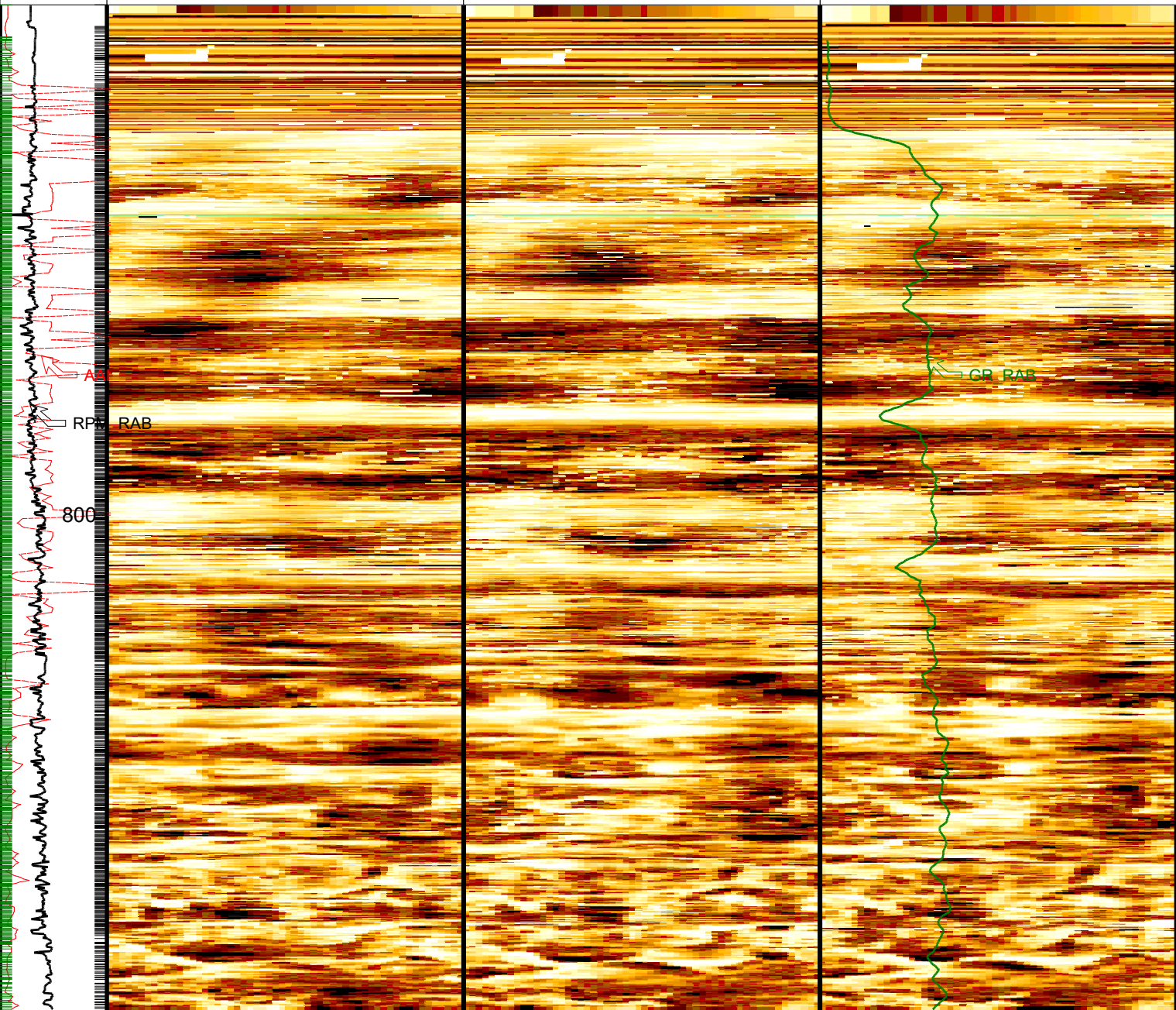
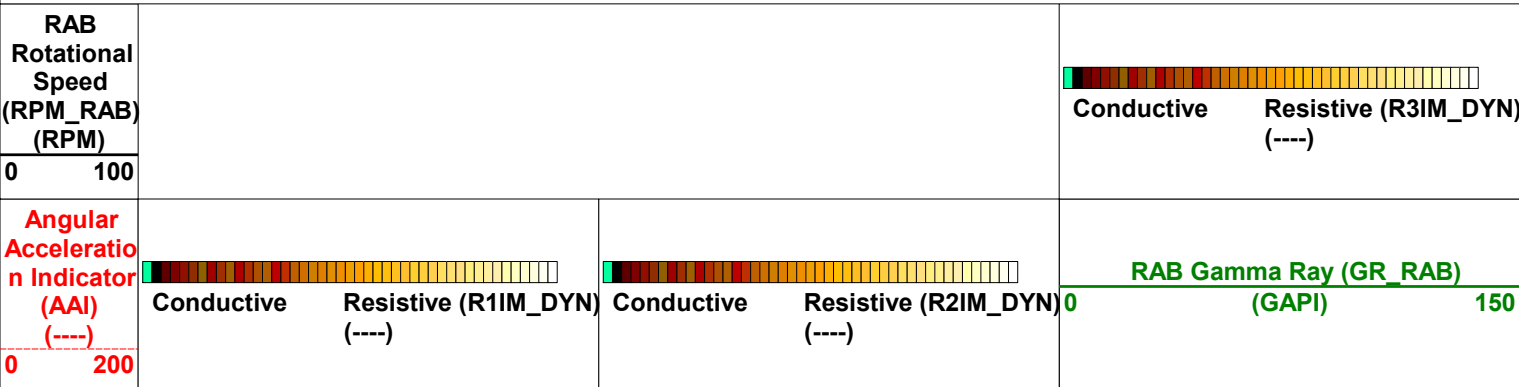
RAB Rotational Speed (RPM_RAB) (RPM) 0 100	Shallow Button Image (R1IM) (OHMM) Absent 1.297 1.695 2.690 4.978 10.948 22.888 42.789 70.649 104.479 158.209	Medium Button Image (R2IM) (OHMM) Absent 1.297 1.695 2.690 4.978 10.948 22.888 42.788 70.648 104.479 158.210	RAB Gamma Ray (GR_RAB) (GAPI) 0 150
--	---	--	---

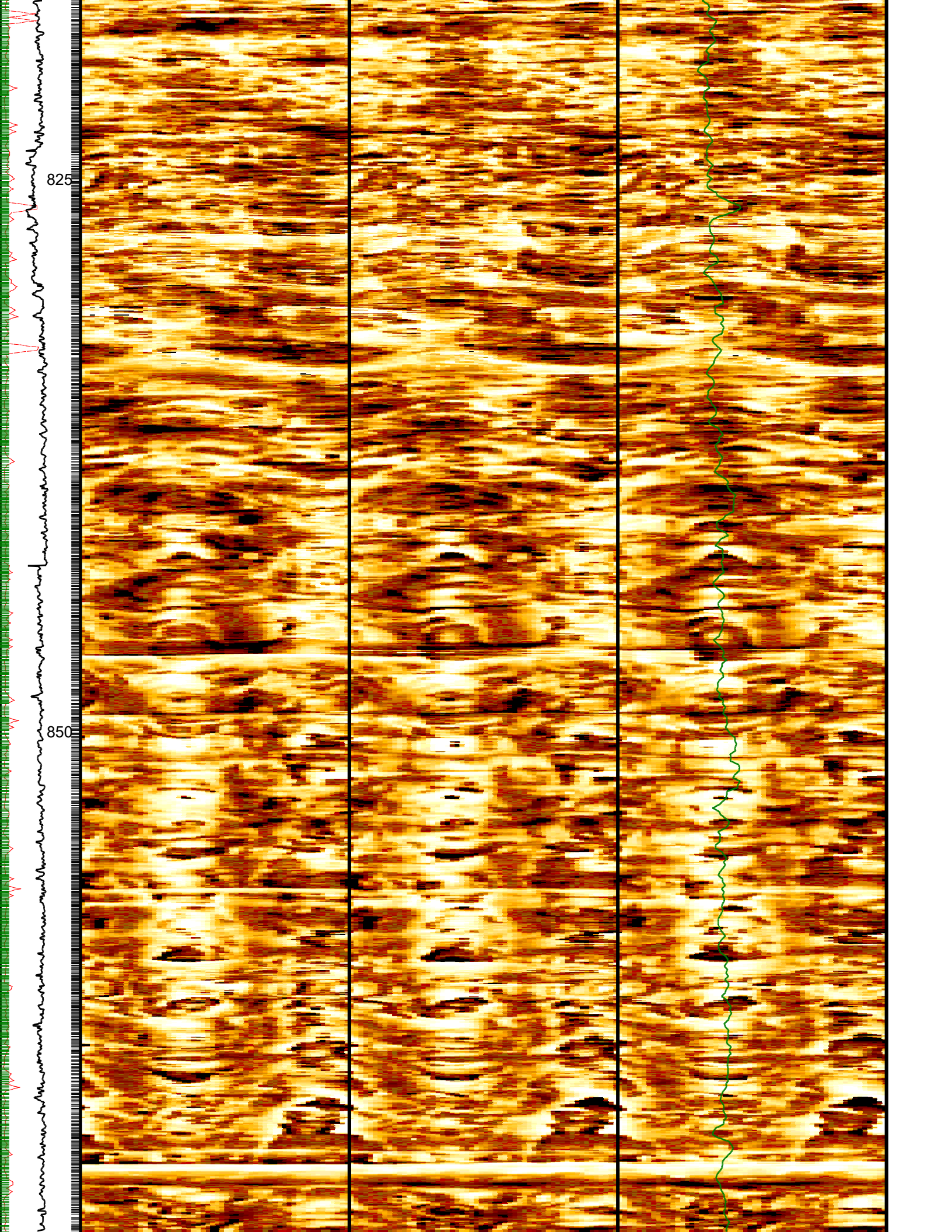
Deep Button Image (R3IM) (OHMM) Absent 1.297 1.695 2.690 4.978 10.948 22.888 42.788 70.649 104.479 158.210
--

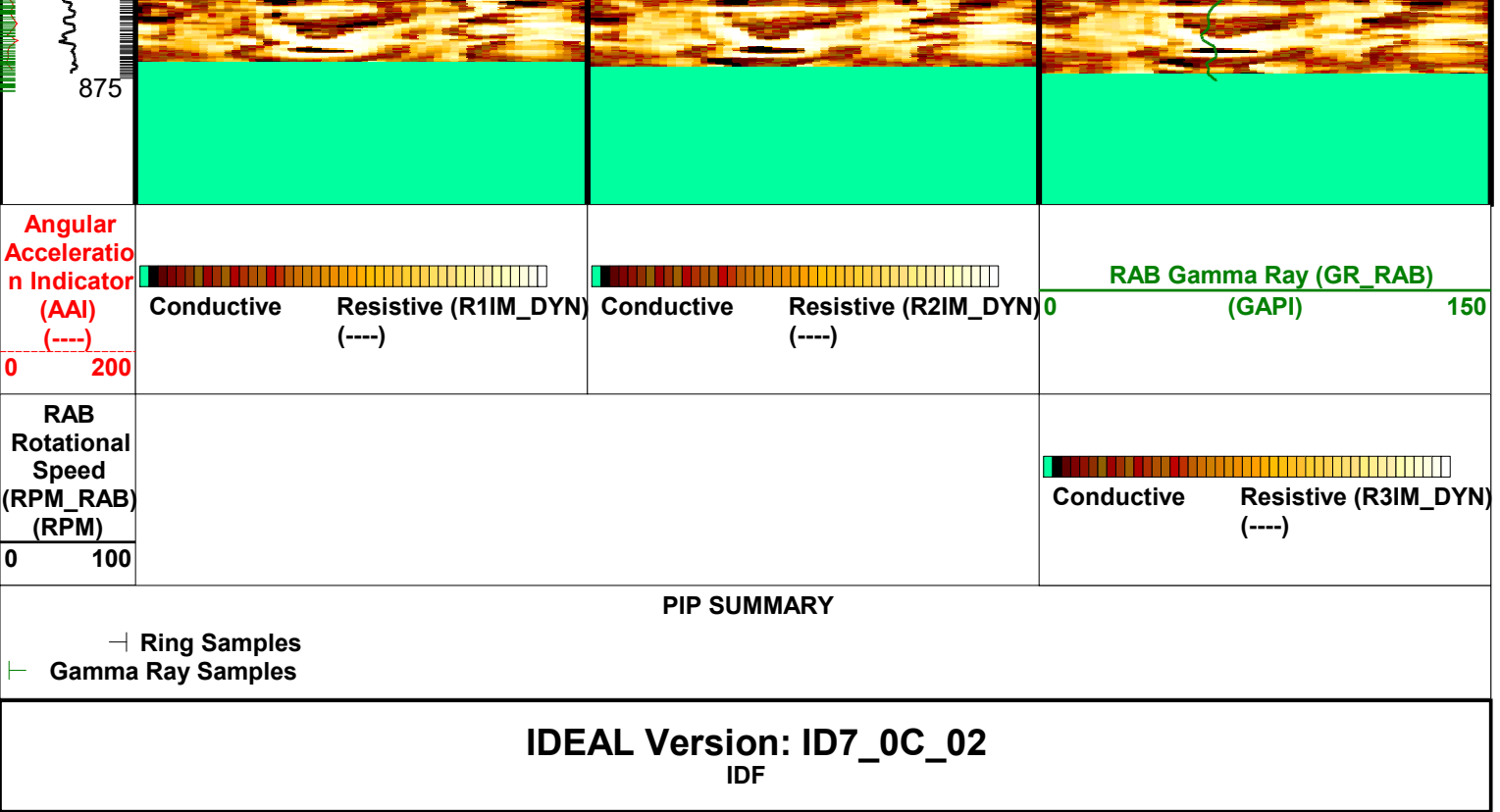
Format: GEOVIS_RES_DYN_IMAGE Vertical Scale: 1:200 Graphics File Created: 13-Aug-2002 13:21

PIP SUMMARY

└ Ring Samples
└ Gamma Ray Samples







Company:	Lamont Doherty	Schlumberger
Well:	ODP Leg 204 Site 1249A	
Field:	Hydrate Ridge	
Ocean:	Pacific	
State:	Oregon	
GeoVISION Resistivity - Image 1 cm : 2 m Measured Depth		