

# Schlumberger

Company: Lamont Doherty

Well: ODP Leg 204 Site 1250A

Field: Hydrate Ridge

Ocean: Pacific State: Oregon

## GeoVISION Azimuthal Density and Neutron - Image

1 cm : 2 m

### Measured Depth

Location		Elevation	
Total depth:	1016.8 m	K.B.	11 m
Spud date:	21-Jul-02	G.L.	-795 m
Runs:	1 To 1	D.F.	11 m
Permanent datum:	Mean Sea Level	Elev.:	0 m
Log measured from:	Drill Floor	11 m	above Perm. datum
Depth reference:	Driller's Pipe Tally		
Service Order no.	40007682	Longitude	Latitude
		-125.15029	+44.56863

Ocean: Pacific  
Field: Hydrate Ridge  
Location: 44.56863 E ; 125.15029 W  
Well: ODP Leg 204 Site 1250A  
Company: Lamont Doherty

Depth logged: 806.0 m To 989.5 m Mag decl: 66.41 deg. Other services: DWOB, DTOR, MVC

Date logged: 21-Jul-02 To 22-Jul-02 Mag dip: 17.70 deg.

### Bore hole record

### Casing record

Hole size	from	to	Size	Density	from	to
9.875 in.	806.0 m	1016.8 m				

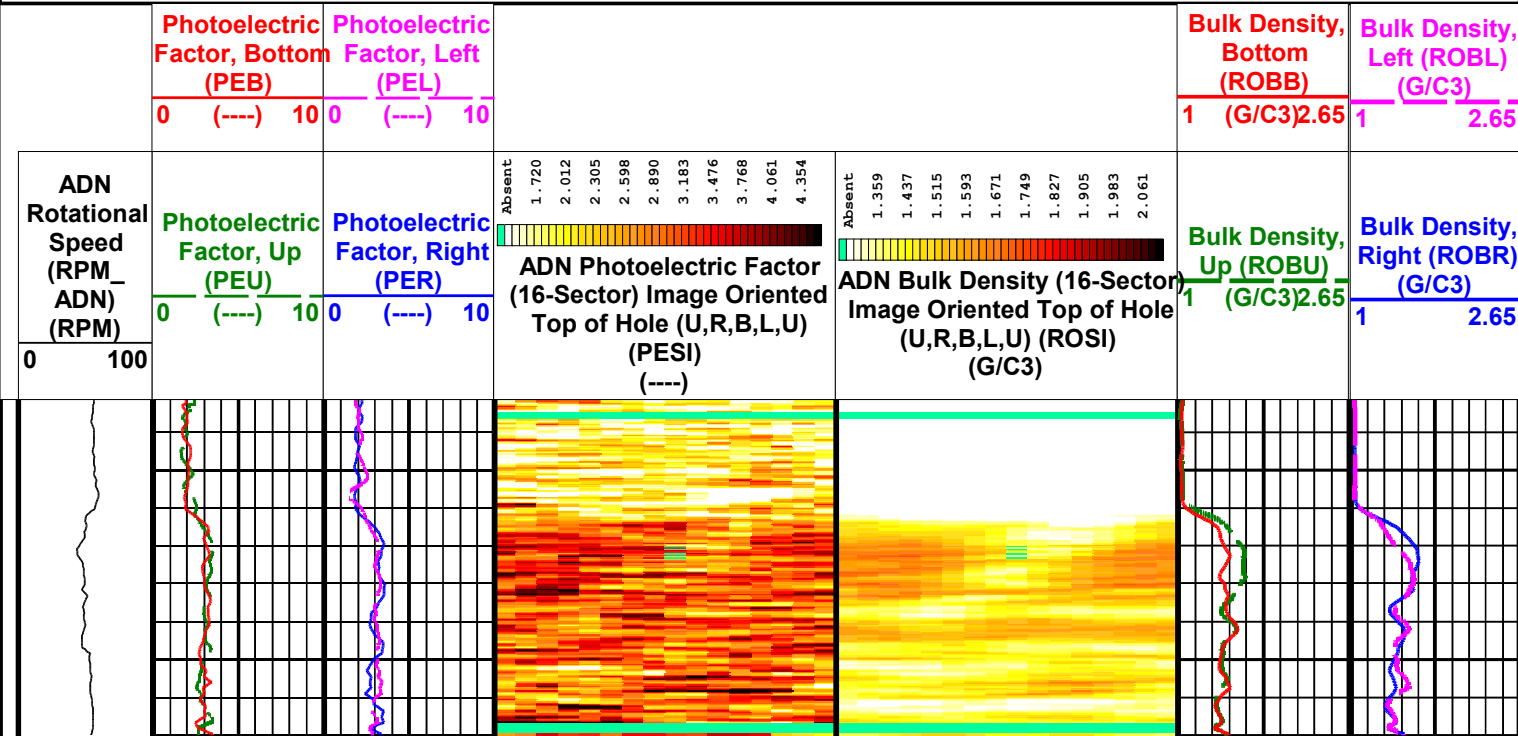
Type	Mud record	from	to	Min	Max	from	to
Seawater		806.0 m	1016.8 m	0 deg.	0 deg.	806.0 m	1016.8 m

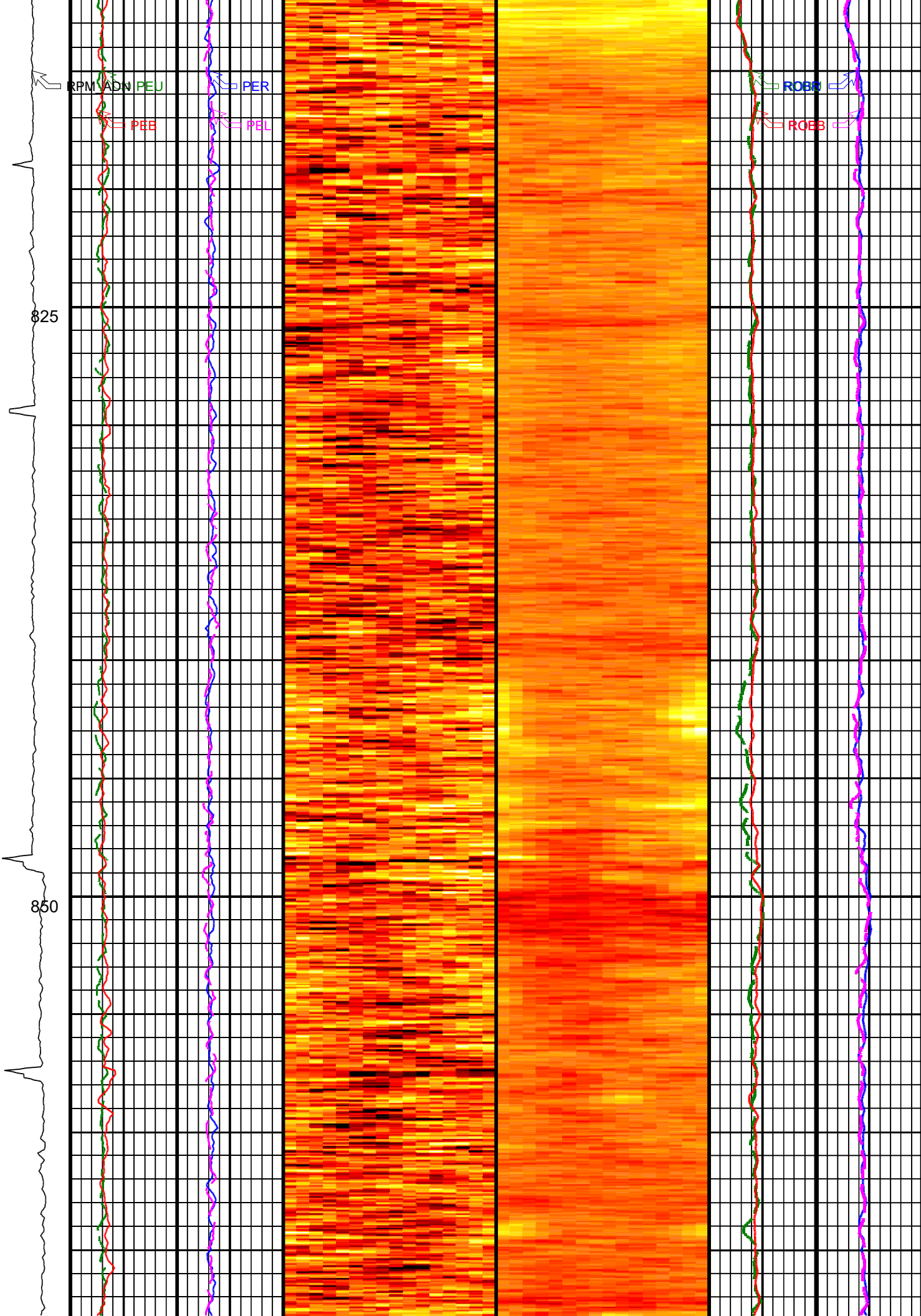
Unit	Downhole Lab	IDEAL Wis	7.0_c2	Software record
Depth system	PDE	SPM	7_0c_09	
		LWD	6.1, 8.0, 6.9	
		MWD	6.1	

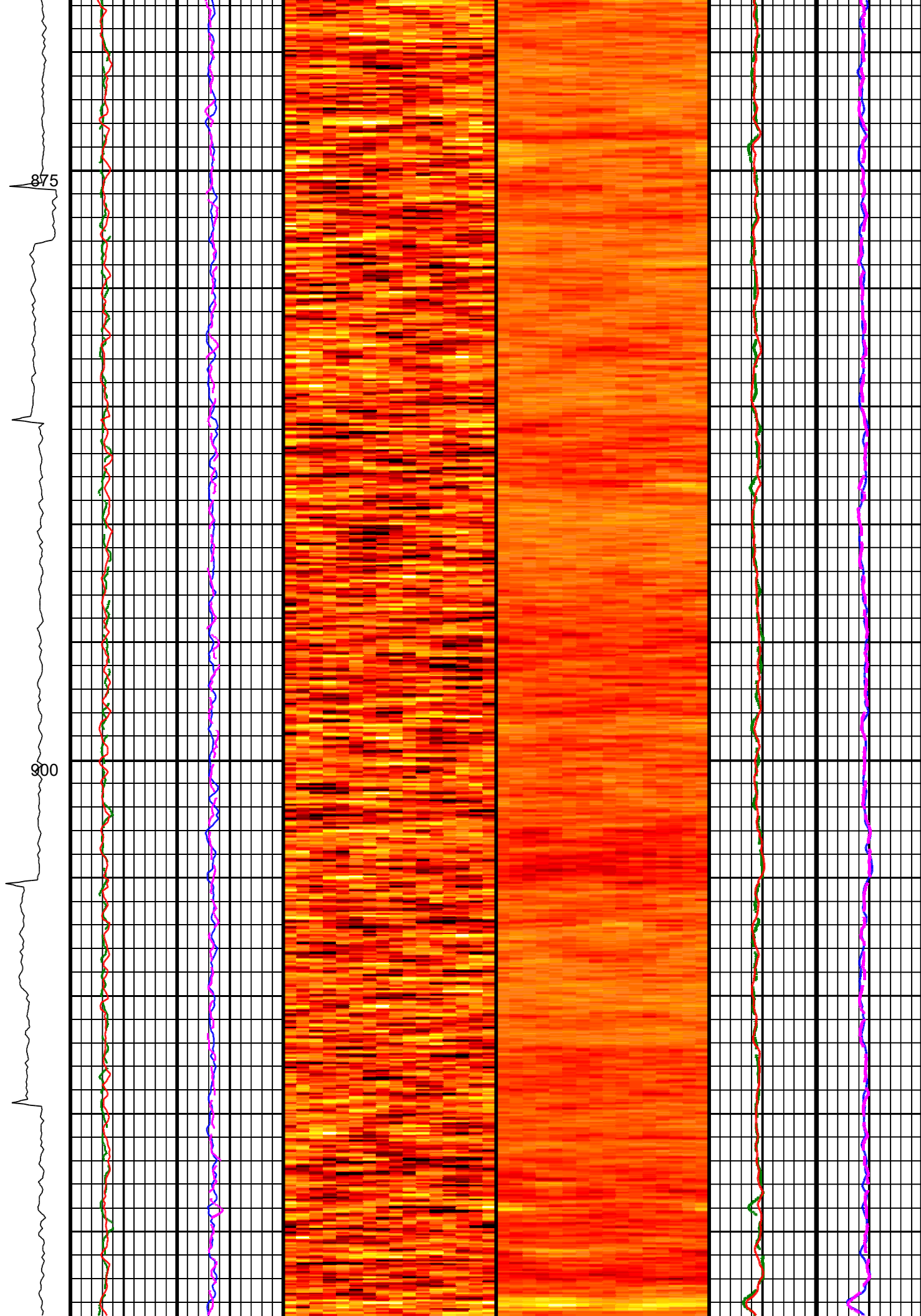
## IDEAL Version: ID7\_0C\_02

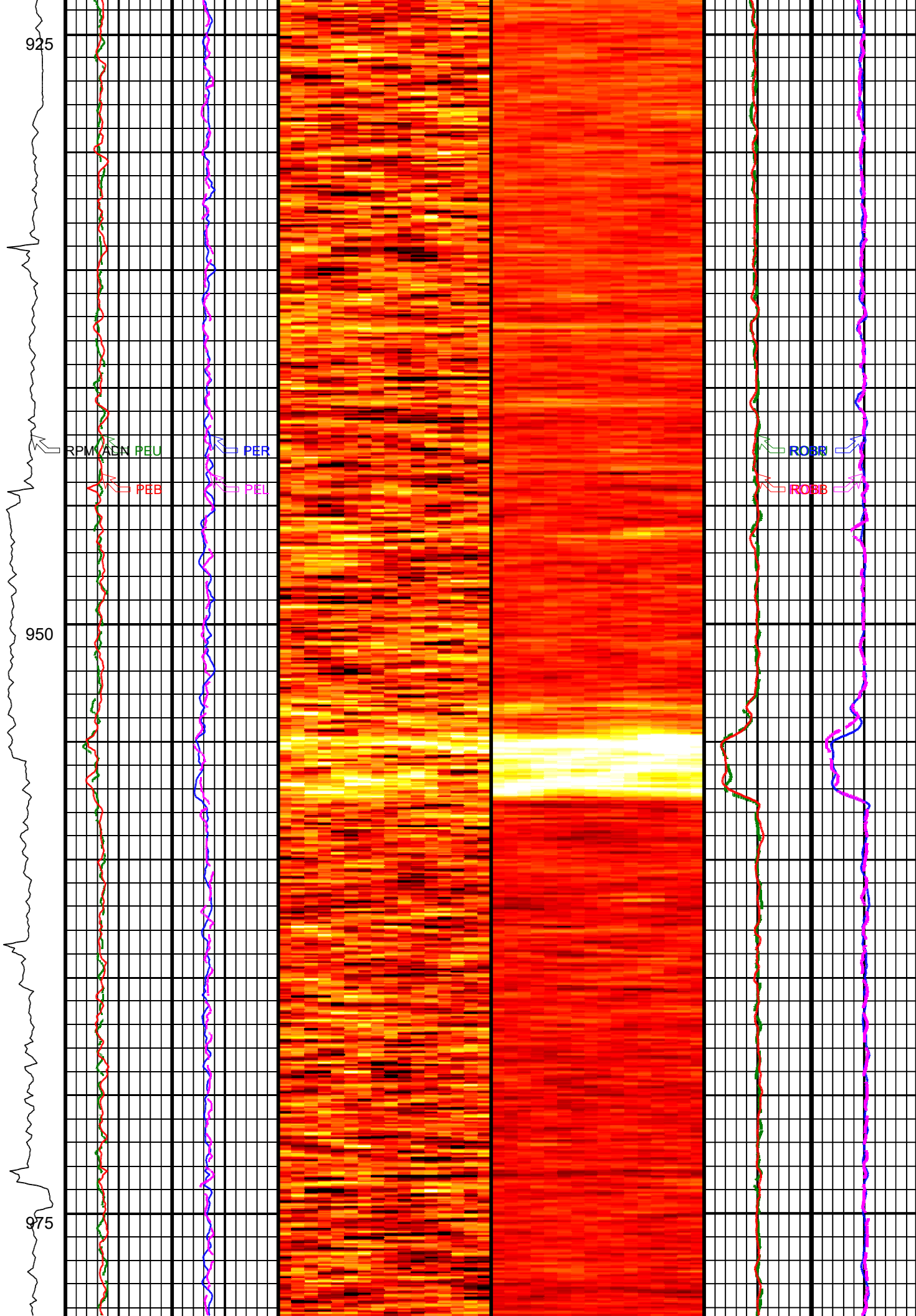
IDF

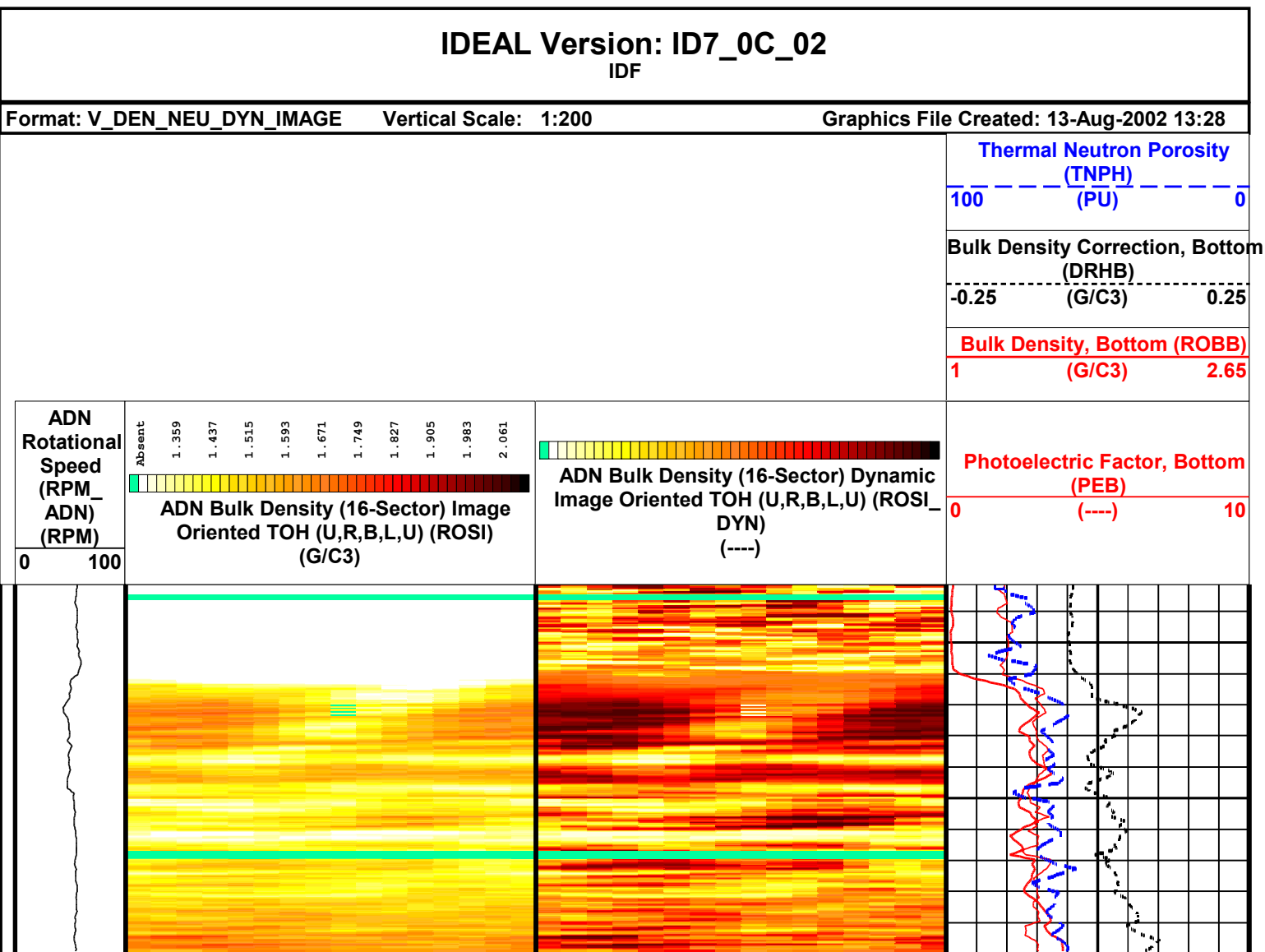
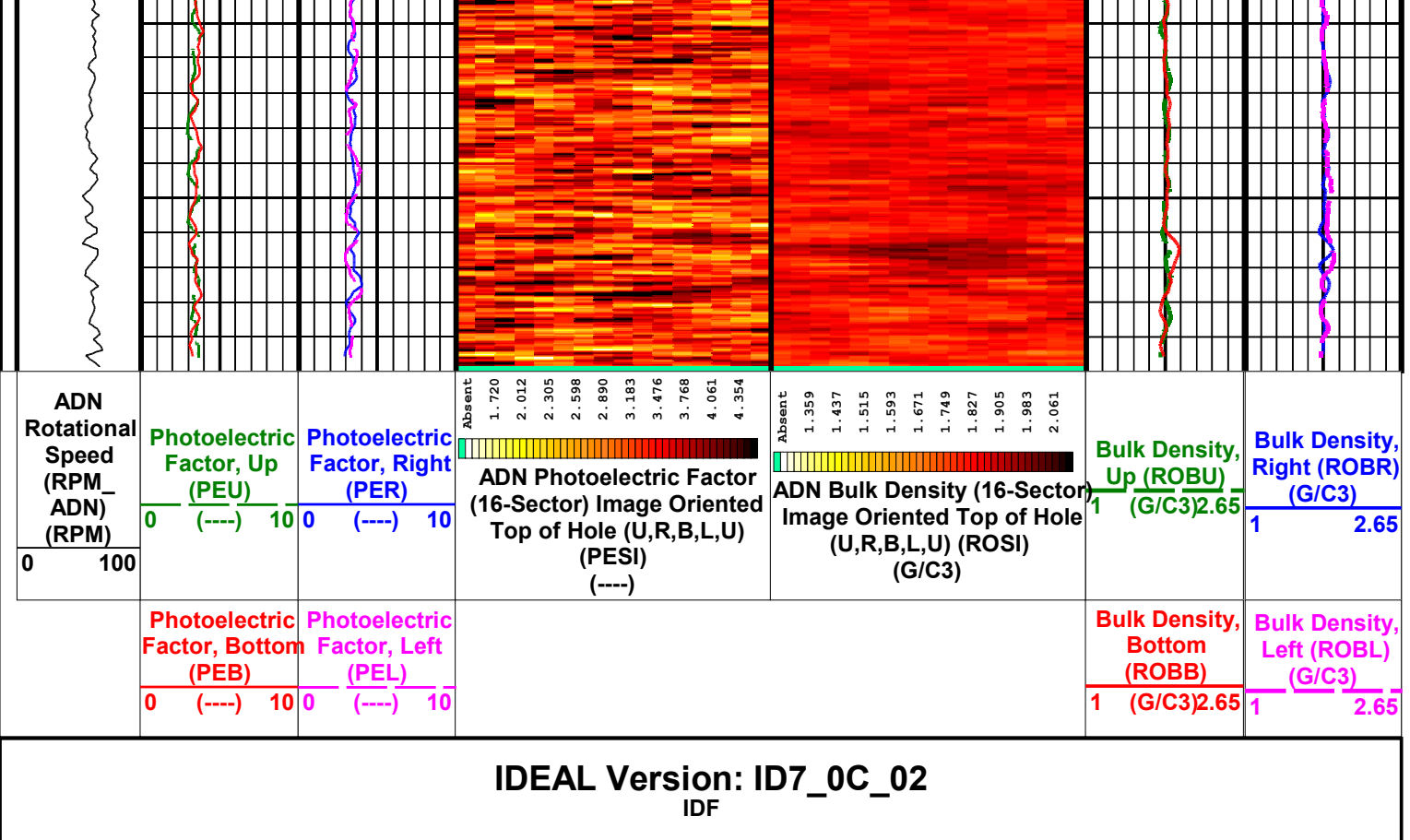
Format: V\_DEN\_NEU\_IMAGE Vertical Scale: 1:200 Graphics File Created: 13-Aug-2002 13:28



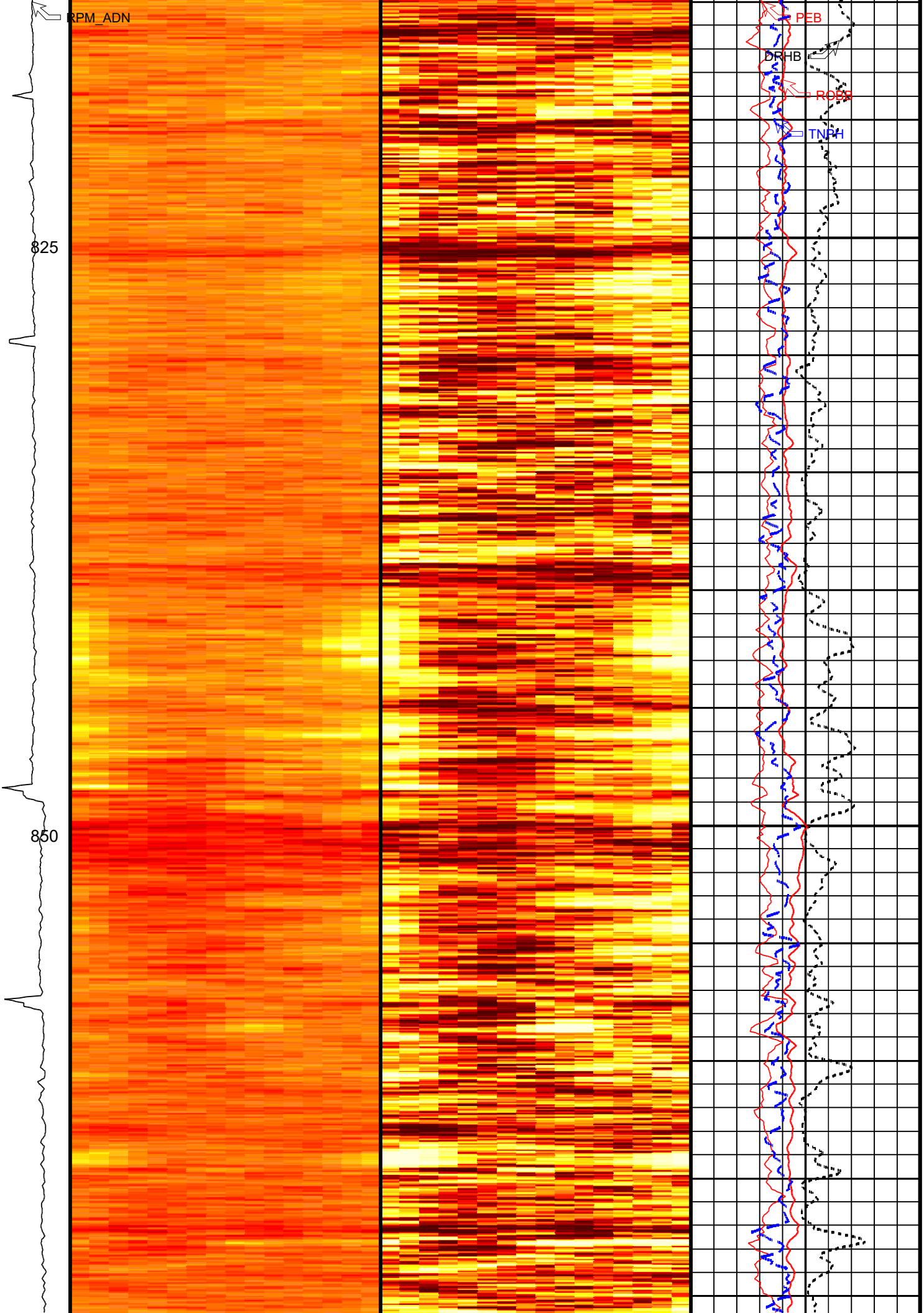






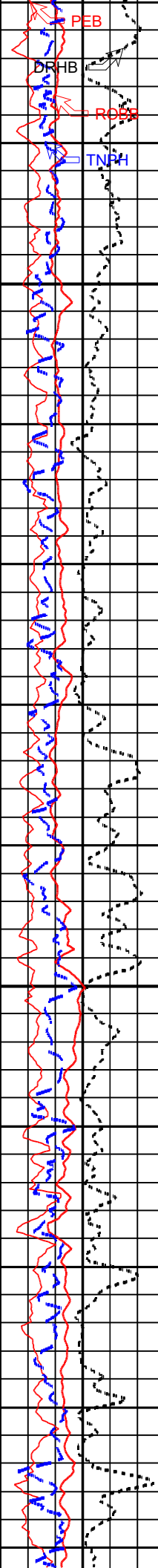


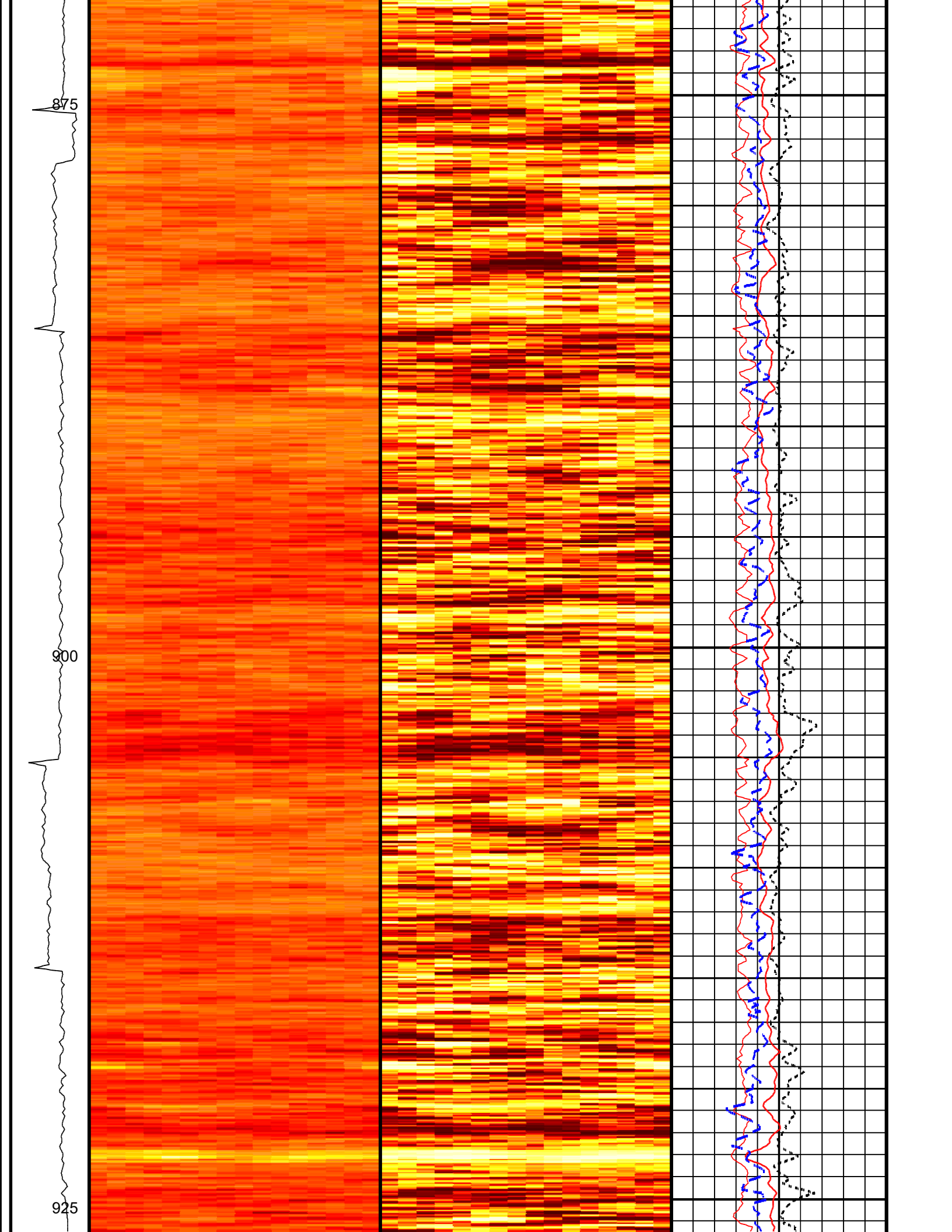
RPM\_ADN



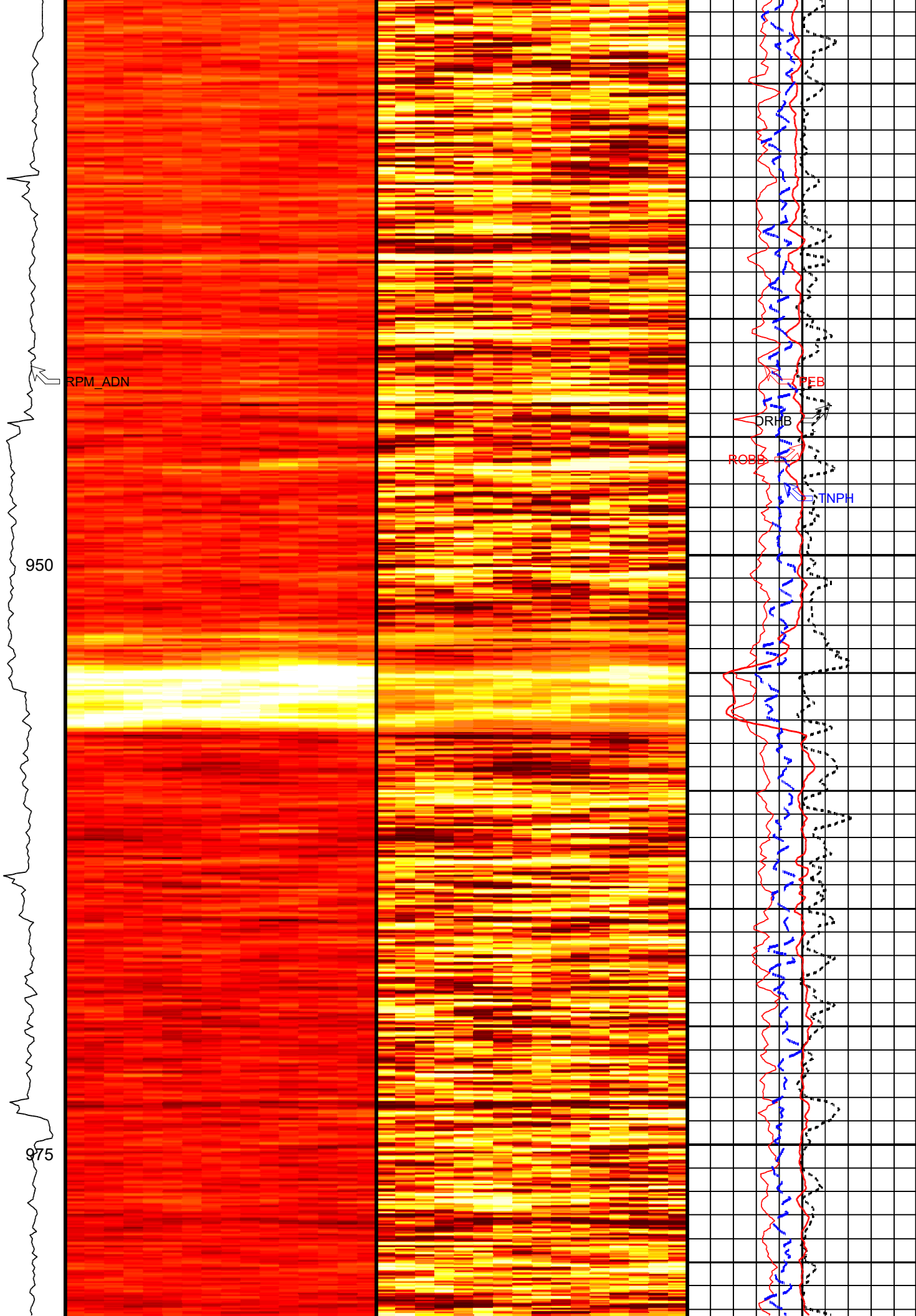
825

850

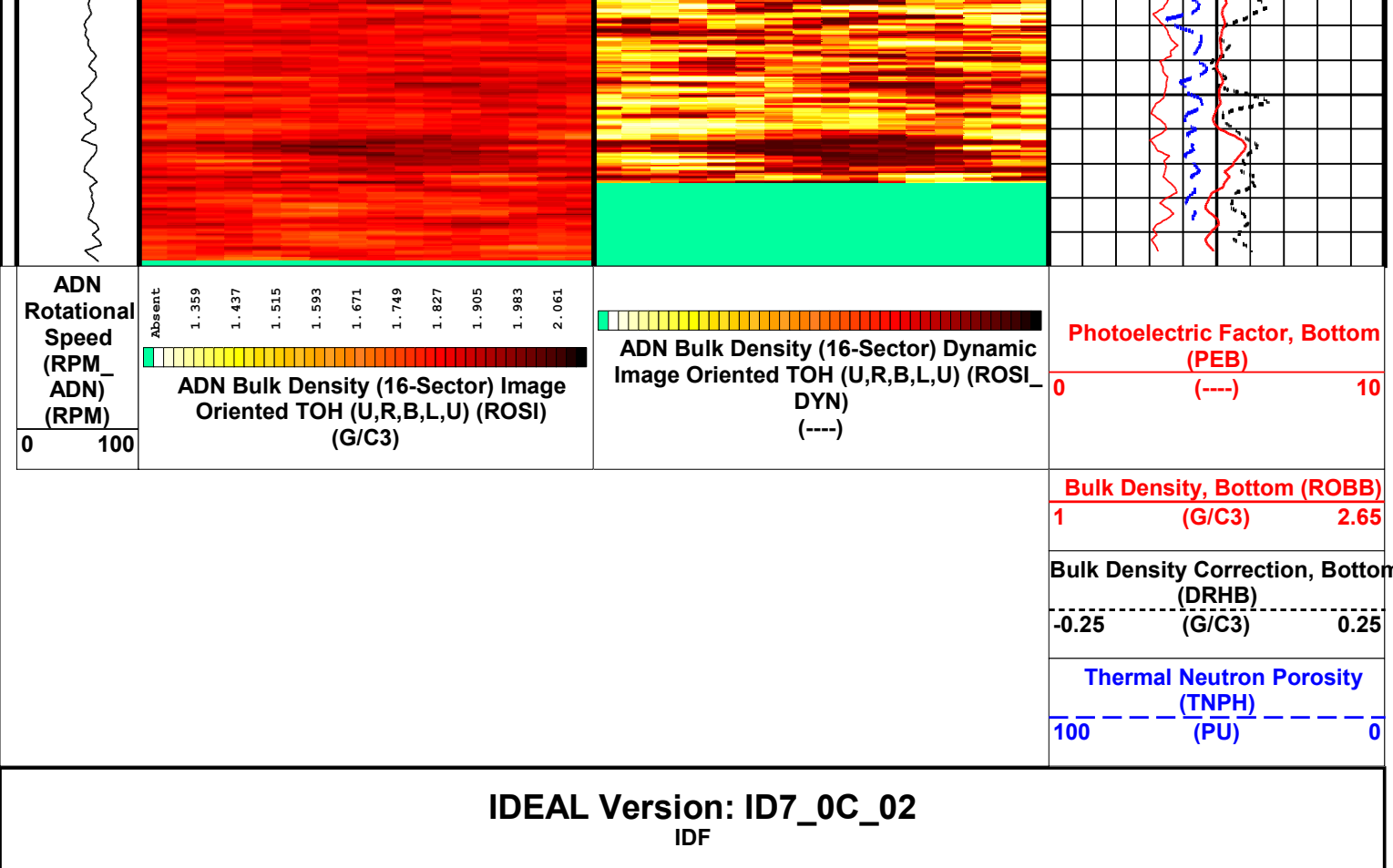












Company:	Lamont Doherty	Schlumberger
Well:	ODP Leg 204 Site 1250A	
Field:	Hydrate Ridge	
Ocean:	Pacific	
State:	Oregon	
	VISION Azimuthal Density and Neutron - Image 1 cm : 2 m Measured Depth	

