



**DISCLAIMER**

THE USE OF AND RELIANCE UPON THIS RECORDED-DATA BY THE HEREIN NAMED COMPANY (AND ANY OF ITS AFFILIATES, PARTNERS, REPRESENTATIVES, AGENTS, CONSULTANTS AND EMPLOYEES) IS SUBJECT TO THE TERMS AND CONDITIONS AGREED UPON BETWEEN SCHLUMBERGER AND THE COMPANY, INCLUDING: (a) RESTRICTIONS ON USE OF THE RECORDED-DATA; (b) DISCLAIMERS AND WAIVERS OF WARRANTIES AND REPRESENTATIONS REGARDING COMPANY'S USE OF AND RELIANCE UPON THE RECORDED-DATA; AND (c) CUSTOMER'S FULL AND SOLE RESPONSIBILITY FOR ANY INFERENCE DRAWN OR DECISION MADE IN CONNECTION WITH THE USE OF THIS RECORDED-DATA.

OTHER SERVICES1  
 OS1: FMS/DSST  
 OS2: VSI  
 OS3: IPLT/DITE  
 OS4:  
 OS5:

OTHER SERVICES2  
 OS1:  
 OS2:  
 OS3:  
 OS4:  
 OS5:

REMARKS: RUN NUMBER 1  
 All depths measured in meters below rig floor.

REMARKS: RUN NUMBER 2

Sea Floor SLB 807 mbrf.  
 Drill pipe SLB 863 mbrf.

Dipole sonic data needs to be further processed on Geoframe or equivalent.

**RUN 1**  
 SERVICE ORDER #:  
 PROGRAM VERSION: 10C0-306  
 FLUID LEVEL:

**RUN 2**  
 SERVICE ORDER #:  
 PROGRAM VERSION:  
 FLUID LEVEL:

LOGGED INTERVAL	START	STOP

LOGGED INTERVAL	START	STOP

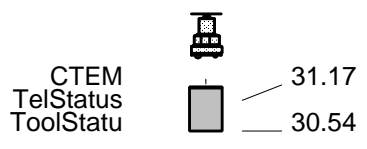
**EQUIPMENT DESCRIPTION**

**RUN 1**  
**SURFACE EQUIPMENT**  
 GSR-U/Y 135  
 WITM (DTS)-A

**RUN 2**

**DOWNHOLE EQUIPMENT**

LEH-QT 32.34  
 LEH-QT 1497  
 DTC-H 31.45  
 ECH-KC 9343  
 AH-MCD-TOP 30.54  
 AH-MCD-TOP





## Output DLIS Files

DEFAULT	FMS_DSI_013LUP	FN:22	PRODUCER	26-Aug-2002 04:30	988.8 M	871.6 M
REDUCE	FMS_DSI_013LUP	FN:23	PRODUCER	26-Aug-2002 04:30	988.8 M	871.6 M

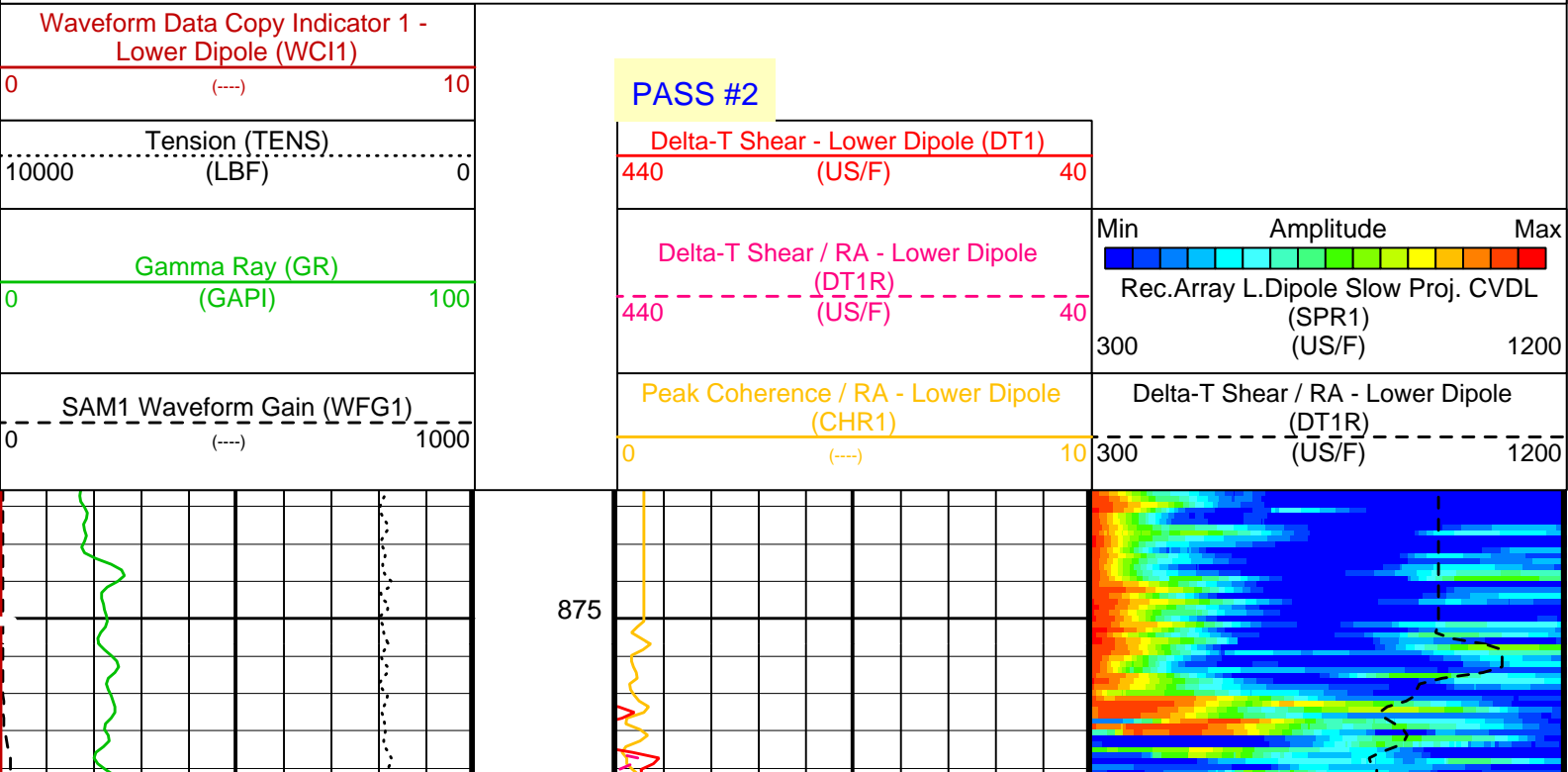
## OP System Version: 10C0-306

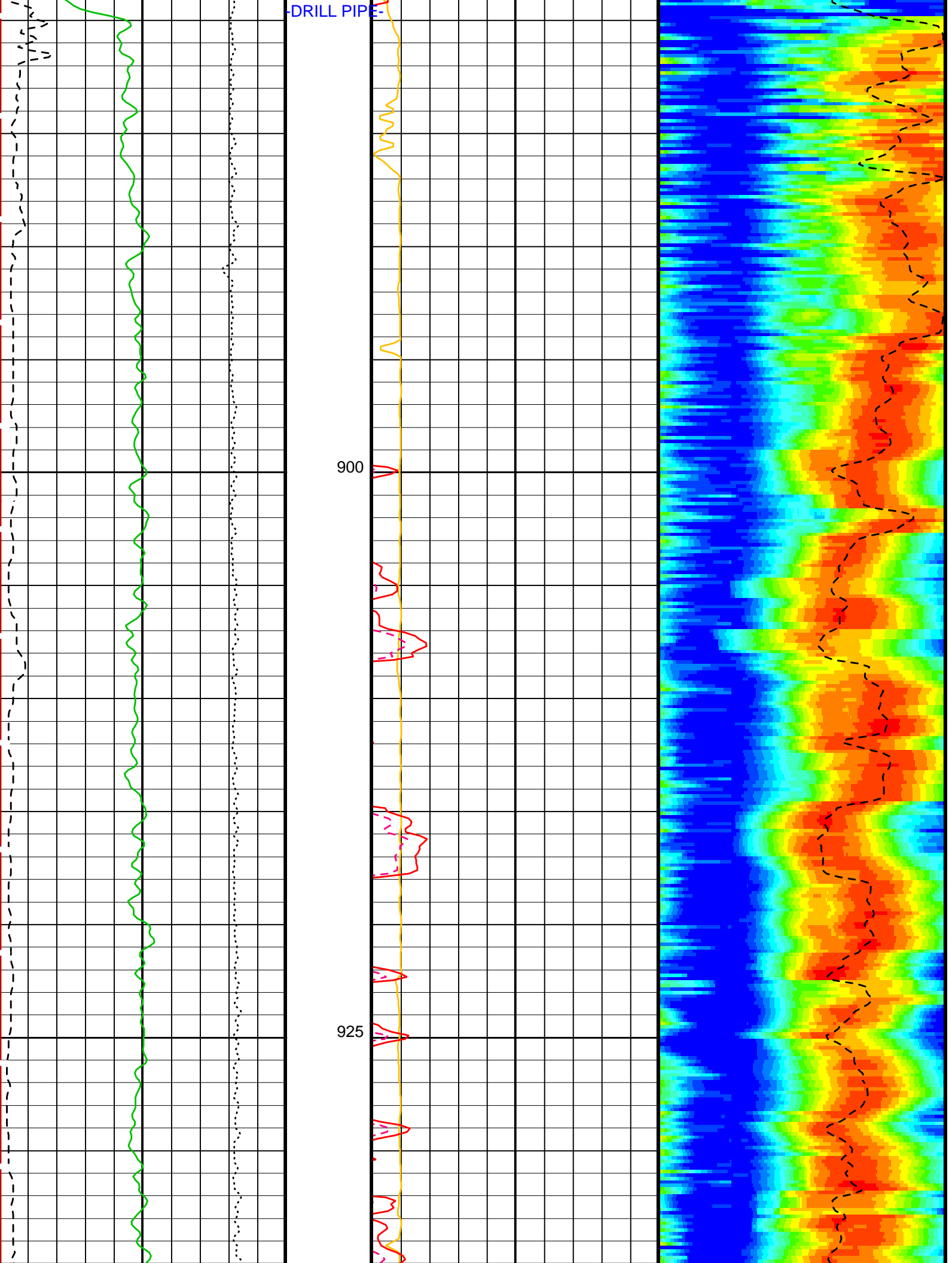
MCM

MEST-B	10C0-306	DTA-A	10C0-306
SGT-N	10C0-306	DSST-B	OP10-KP1
DTC-H	10C0-306		

### PIP SUMMARY

Time Mark Every 60 S

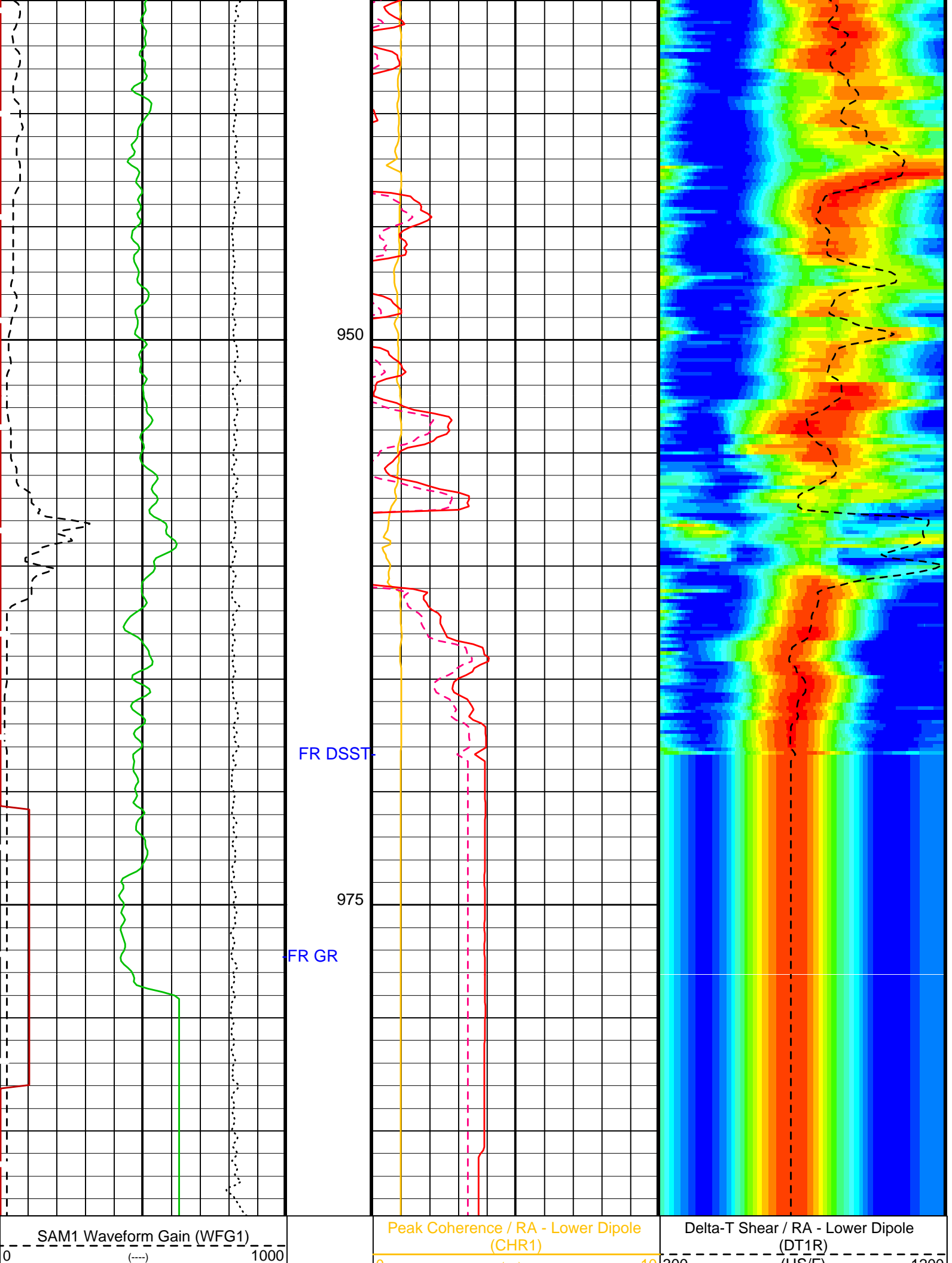


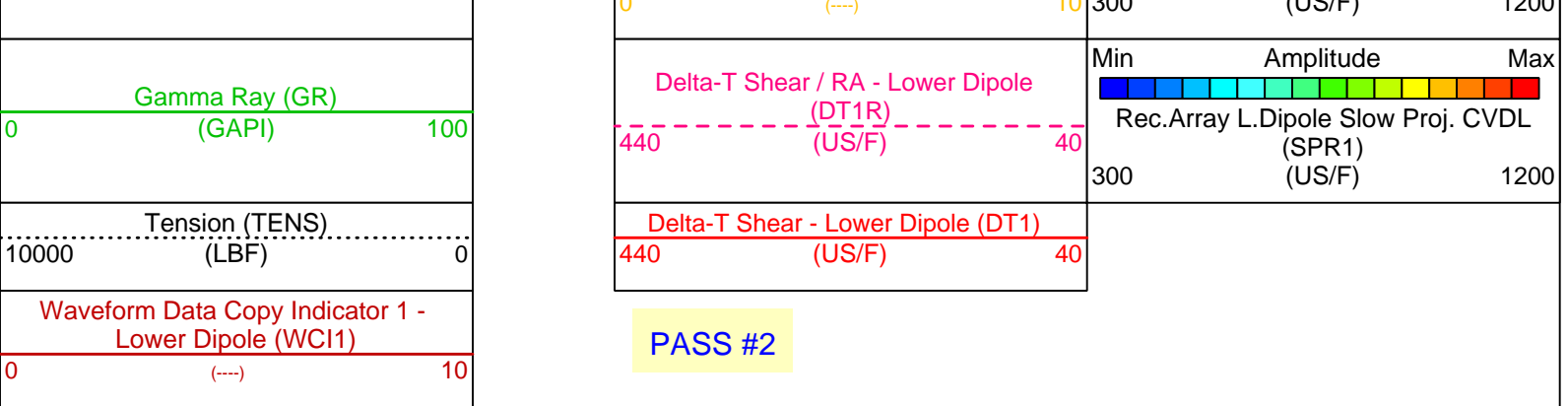


DRILL PIPE

900

925





PIP SUMMARY

Time Mark Every 60 S

Parameters

DLIS Name	Description	Value
DSST-B: Dipole Shear Imager - B		
DDE1	Digitizing Delay 1	0 US
DDEX	Digitizing Delay X	0 US
DLCS	Label Compressional Source - Dipole Shear	USE
DSHL	Label Slowness Lower Limit - Dipole Shear	300 US/F
DSHU	Label Slowness Upper Limit - Dipole Shear	1200 US/F
DSI1	Digitizer Sample Interval 1	40 US
DSIX	Digitizer Sample Interval X	10 US
DTCS	Compressional Delta-T Source for DTCO Channel	PS_COMP
DWC1	Digitizer Word Count 1	512
DWCX	Digitizer Word Count X	512
LTXG	Lower Dipole Transmitter Geometry	156 IN
NWI1	Number Waveform Items 1	8
RX1G	Receiver 1 Geometry	294 IN
RX2G	Receiver 2 Geometry	300 IN
RX3G	Receiver 3 Geometry	306 IN
RX4G	Receiver 4 Geometry	312 IN
RX5G	Receiver 5 Geometry	318 IN
RX6G	Receiver 6 Geometry	324 IN
RX7G	Receiver 7 Geometry	330 IN
RX8G	Receiver 8 Geometry	336 IN
SAM1	DSST Sonic Acquisition Mode 1 - Lower Dipole Mode	LFD_EVEN
SAMX	DSST Sonic Acquisition Mode X - Both Dipoles or Monopole Mode for Expert	OFF
SAS1	STC Sonic Array Status - Lower Dipole	255
SBO1	STC Search Band Offset - Lower Dipole	3000 US
SBW1	STC Search Bandwidth - Lower Dipole	8000 US
SFC1	STC Formation Character - Lower Dipole	SELECTABLE
SFM1	STC Filter - Lower Dipole	B.3-1.5K
SLL1	STC Slowness Lower Limit - Lower Dipole	300 US/F
SST1	STC Slowness Step - Lower Dipole	4 US/F
SSW1	STC Source Waveform - Lower Dipole	WF_SAM1
SUL1	STC Slowness Upper Limit - Lower Dipole	1200 US/F
SWD1	STC Slowness Width - Lower Dipole	40 US/F
TBF1	STC Time for Baseline Fill - Lower Dipole	0 US
TLL1	STC Time Lower Limit - Lower Dipole	2450 US
TST1	STC Time Step - Lower Dipole	200 US
TUL1	STC Time Upper Limit - Lower Dipole	20440 US
TWD1	STC Time Width - Lower Dipole	2000 US
TWI1	STC Integration Time Window - Lower Dipole	1600 US
TWSX	Transmitter Waveform Select X	0
WFM1	Waveform Mode 1	W1

Format: DSST\_LOWER\_DIPOLE\_VDL\_COLOR Vertical Scale: 1:200 Graphics File Created: 26-Aug-2002 04:30

OP System Version: 10C0-306  
MCM

MEST-B	10C0-306	DTA-A	10C0-306
SGT-N	10C0-306	DSST-B	OP10-KP1
DTC-H	10C0-306		

Output DLIS Files

DEFAULT	FMS_DSI_013LUP	FN:22	PRODUCER	26-Aug-2002 04:30
REDUCE	FMS_DSI_013LUP	FN:23	PRODUCER	26-Aug-2002 04:30

# Output DLIS Files

DEFAULT	FMS_DSI_013LUP	FN:22	PRODUCER	26-Aug-2002 04:30	988.8 M	871.6 M
REDUCE	FMS_DSI_013LUP	FN:23	PRODUCER	26-Aug-2002 04:30	988.8 M	871.6 M

## OP System Version: 10C0-306 MCM

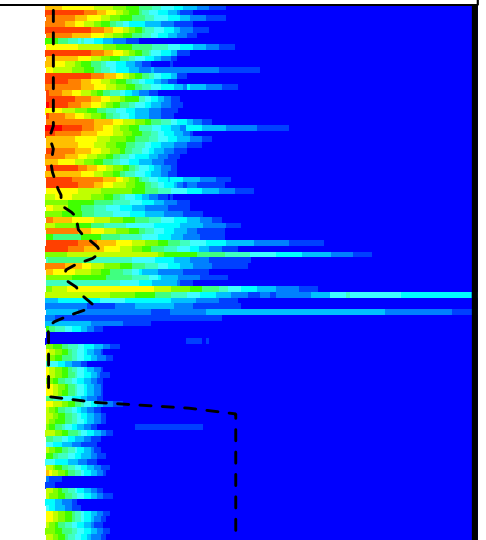
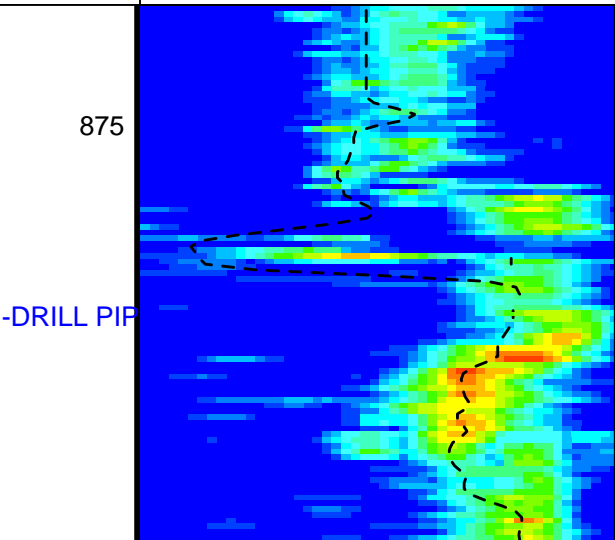
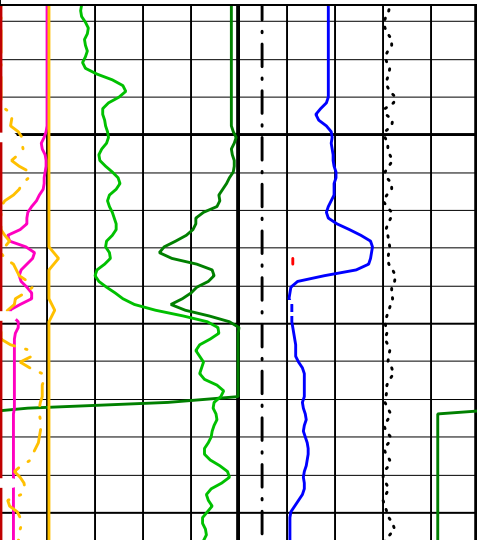
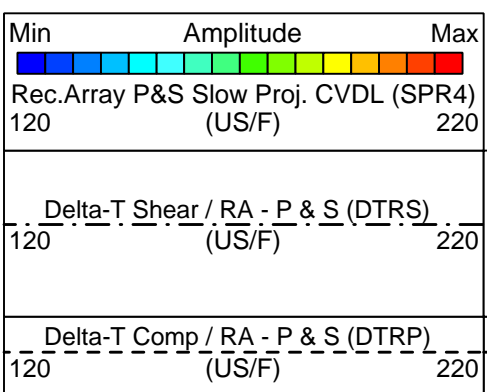
MEST-B	10C0-306	DTA-A	10C0-306
SGT-N	10C0-306	DSST-B	OP10-KP1
DTC-H	10C0-306		

### PIP SUMMARY

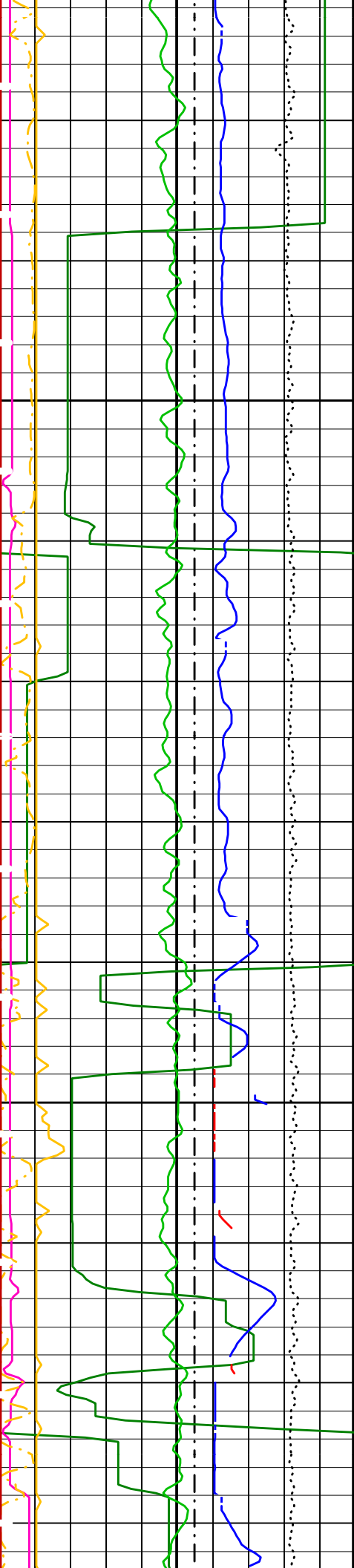
Time Mark Every 60 S

Waveform Data Copy Indicator 4 - Monopole P&S (WCI4)		
0	(---)	10
Peak Coherence / RA - P & S Shear (CHRS)		
-1	(---)	9
Peak Coherence / RA - P & S Comp (CHRP)		
0	(---)	10
Tension (TENS) (LBF)		
10000		0
Gamma Ray (GR) (GAPI)		
0		100
Peak Coherence / RA - Stoneley (CHR3)		
0	(---)	10
Delta-T Shear - P & S (DT4S) (US/F)		
440		40
Delta-T Comp - P & S (DT4P) (US/F)		
440		40
Delta-T Stoneley (DTST) (US/F)		
440		40
Bit Size (BS) (IN)		
6		16

PASS #2

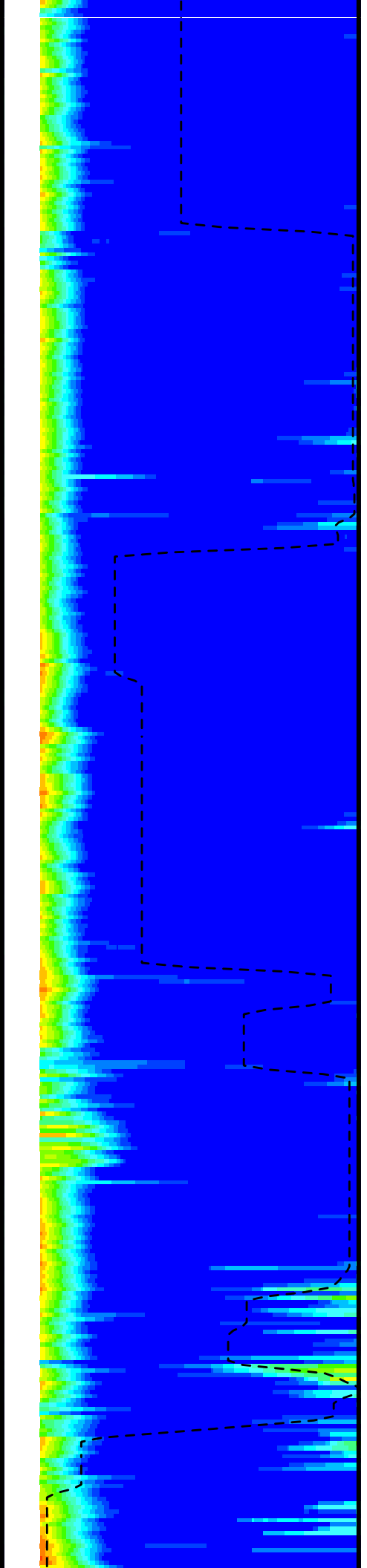
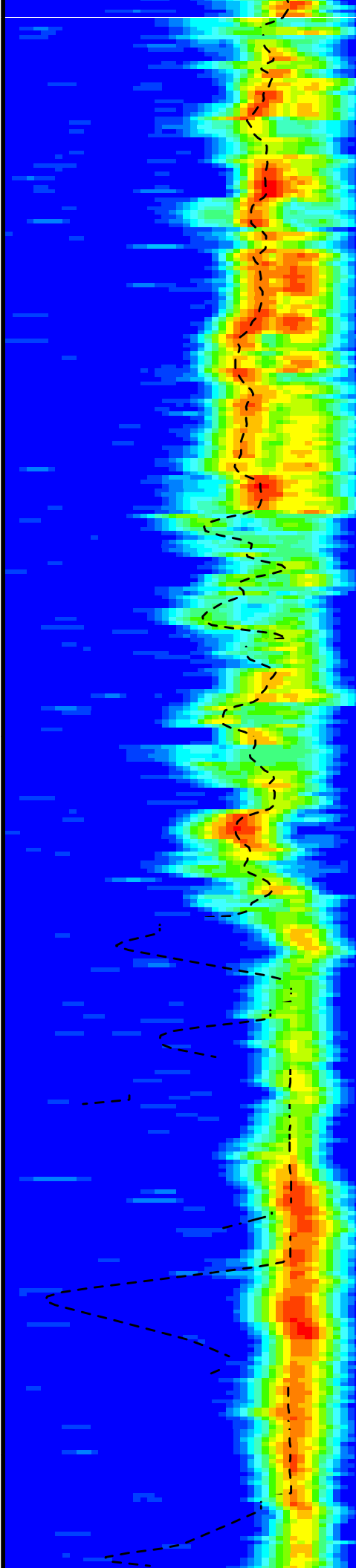


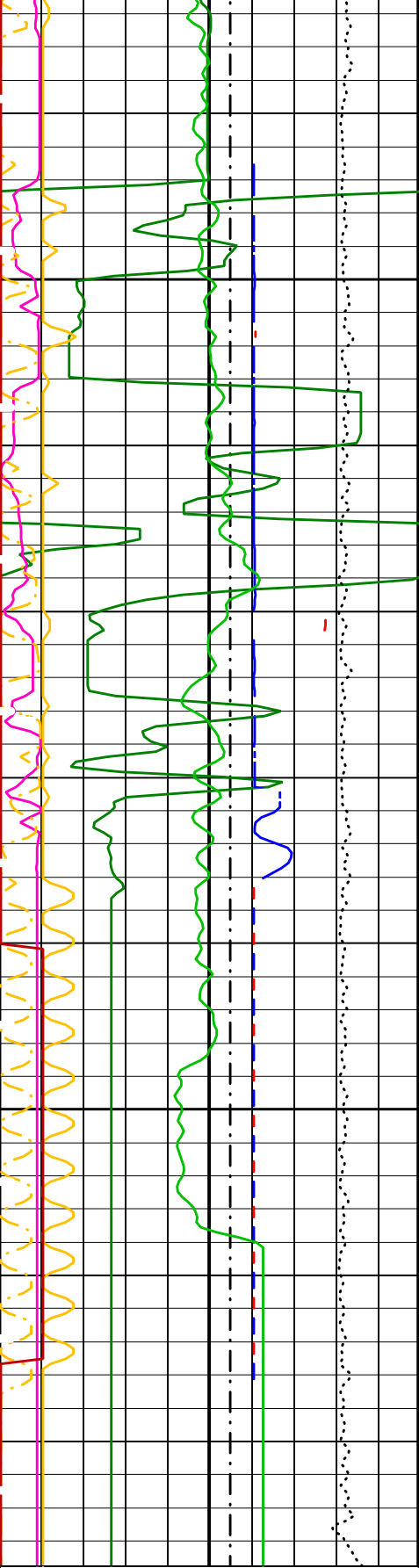




900

925





950

FR DSST-

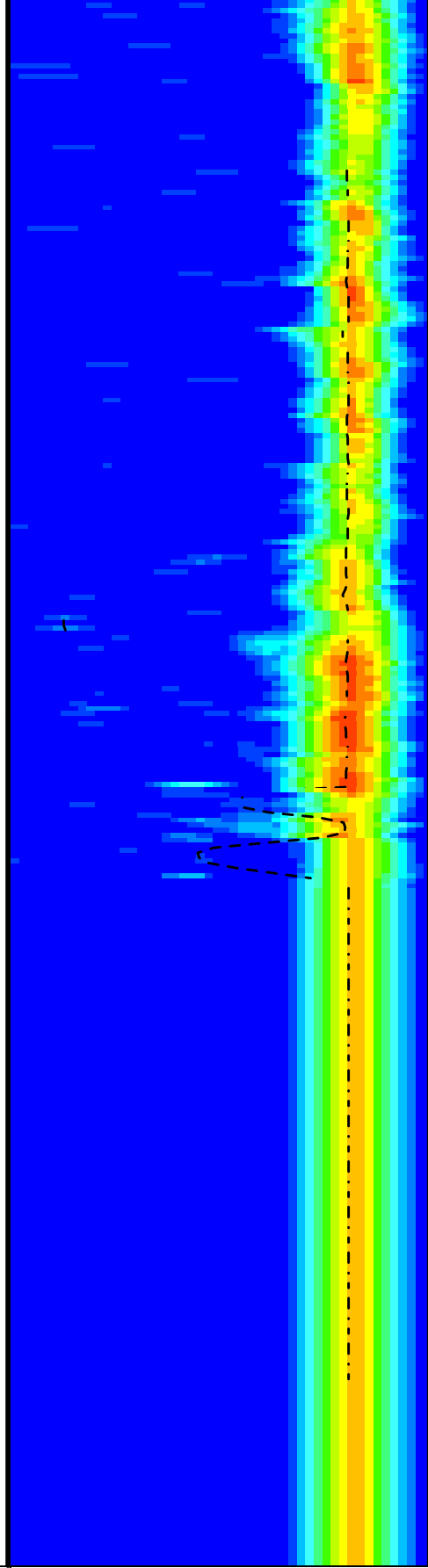
975

-FR GR

Bit Size (BS)  
(IN) 6 16

Delta-T Stoneley (DTST)  
(US/F) 440 40

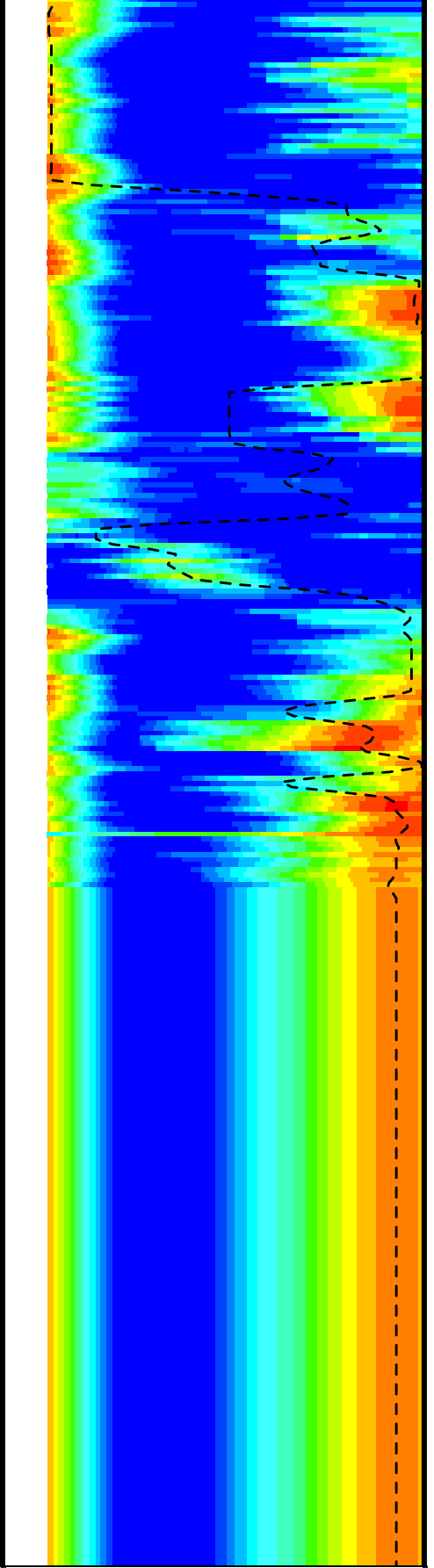
Delta-T Comp - P & S (DT4P)  
(US/F) 440 40



Delta-T Comp / RA - P & S (DTRP)  
(US/F) 120 220

Delta-T Shear / RA - P & S (DTRS)  
(US/F) 120 220

Min Amplitude Max



Delta-T Stoneley / RA (DT3R)  
(US/F) 180 780

Min Amplitude Max  
Rec.Array Stoneley Slow Proj. CVDL  
(SPR3)  
(US/F) 180 780

Min Amplitude Max

440	(US/F)	40
Delta-T Shear - P & S (DT4S)		
0	(---)	10
Peak Coherence / RA - Stoneley (CHR3)		
0	(GAPI)	100
Gamma Ray (GR)		
10000	(LBF)	0
Tension (TENS)		
0	(---)	10
Peak Coherence / RA - P & S Comp (CHRP)		
-1	(---)	9
Peak Coherence / RA - P & S Shear (CHRS)		
0	(---)	10
Waveform Data Copy Indicator 4 - Monopole P&S (WCI4)		

Rec.Array P&S Slow Proj. CVDL (SPR4)  
120 (US/F) 220

PASS #2

PIP SUMMARY

Time Mark Every 60 S

Parameters

DLIS Name	Description	Value
BHS	SGT-N: Scintillation Gamma-Ray - N Borehole Status	OPEN
BHS	DSST-B: Dipole Shear Imager - B Borehole Status	OPEN
CASF	Label Casing Function - Monopole P&S	50
COLL	Label Slowness Lower Limit - Monopole P&S Compressional	120 US/F
COUL	Label Slowness Upper Limit - Monopole P&S Compressional	200 US/F
DDE3	Digitizing Delay 3	0 US
DDE4	Digitizing Delay 4	0 US
DDEX	Digitizing Delay X	0 US
DSI3	Digitizer Sample Interval 3	40 US
DSI4	Digitizer Sample Interval 4	10 US
DSIX	Digitizer Sample Interval X	10 US
DTCS	Compressional Delta-T Source for DTCO Channel	PS_COMP
DTF	Delta-T Fluid	189 US/F
DWC3	Digitizer Word Count 3	512
DWC4	Digitizer Word Count 4	512
DWCX	Digitizer Word Count X	512
FILG	Label Fill Gap Control - Monopole P&S	COMP_SHEAR
LFC	Label Formation Character - Monopole P&S	COMP_FIRST
MCS	Mean Casing Slowness	57 US/F
MTXG	Monopole Transmitter Geometry	186 IN
NWI3	Number Waveform Items 3	8
NWI4	Number Waveform Items 4	8
RSMN	Label Shear/Compressional Minimum Ratio - Monopole P&S	1.4
RSMX	Label Shear/Compressional Maximum Ratio - Monopole P&S	2.12
RX1G	Receiver 1 Geometry	294 IN
RX2G	Receiver 2 Geometry	300 IN
RX3G	Receiver 3 Geometry	306 IN
RX4G	Receiver 4 Geometry	312 IN
RX5G	Receiver 5 Geometry	318 IN
RX6G	Receiver 6 Geometry	324 IN
RX7G	Receiver 7 Geometry	330 IN
RX8G	Receiver 8 Geometry	336 IN
SAM3	DSST Sonic Acquisition Mode 3 - Low Frequency Monopole Mode for Stoneley	ODD
SAM4	DSST Sonic Acquisition Mode 4 - High Frequency Monopole Mode for P&S	EVEN
SAMX	DSST Sonic Acquisition Mode X - Both Dipoles or Monopole Mode for Expert	OFF
SAS3	STC Sonic Array Status - Monopole Stoneley	255
SAS4	STC Sonic Array Status - Monopole P&S	255
SBO3	STC Search Band Offset - Monopole Stoneley	2000 US
SBO4	STC Search Band Offset - Monopole P&S	500 US
SBR4	STC Baseline Removal - Monopole P&S	ON

SBW3	STC Search Bandwidth - Monopole Stoneley	6000	US
SBW4	STC Search Bandwidth - Monopole P&S	2000	US
SFC3	STC Formation Character - Monopole Stoneley	SLOW	
SFC4	STC Formation Character - Monopole P&S	SELECTABLE	
SFM3	STC Filter - Monopole Stoneley	B.5-1.5K	
SFM4	STC Filter - Monopole P&S	B3-20K	
SHLL	Label Slowness Lower Limit - Monopole P&S Shear	120	US/F
SHUL	Label Slowness Upper Limit - Monopole P&S Shear	200	US/F
SLL3	STC Slowness Lower Limit - Monopole Stoneley	240	US/F
SLL4	STC Slowness Lower Limit - Monopole P&S	120	US/F
SST3	STC Slowness Step - Monopole Stoneley	4	US/F
SST4	STC Slowness Step - Monopole P&S	2	US/F
SSW4	STC Source Waveform - Monopole P&S	WF_SAM4	
STLL	Label Slowness Lower Limit - Monopole Stoneley	240	US/F
STUL	Label Slowness Upper Limit - Monopole Stoneley	780	US/F
SUL3	STC Slowness Upper Limit - Monopole Stoneley	780	US/F
SUL4	STC Slowness Upper Limit - Monopole P&S	220	US/F
SWD3	STC Slowness Width - Monopole Stoneley	40	US/F
SWD4	STC Slowness Width - Monopole P&S	10	US/F
TBF3	STC Time for Baseline Fill - Monopole Stoneley	0	US
TBF4	STC Time for Baseline Fill - Monopole P&S	300	US
TLL3	STC Time Lower Limit - Monopole Stoneley	1160	US
TLL4	STC Time Lower Limit - Monopole P&S	580	US
TST3	STC Time Step - Monopole Stoneley	200	US
TST4	STC Time Step - Monopole P&S	50	US
TUL3	STC Time Upper Limit - Monopole Stoneley	12020	US
TUL4	STC Time Upper Limit - Monopole P&S	3480	US
TWD3	STC Time Width - Monopole Stoneley	2000	US
TWD4	STC Time Width - Monopole P&S	1000	US
TWI3	STC Integration Time Window - Monopole Stoneley	1600	US
TWI4	STC Integration Time Window - Monopole P&S	500	US
TWSX	Transmitter Waveform Select X	0	
WFM4	Waveform Mode 4	W1	
BS	System and Miscellaneous Bit Size	11.438	IN

Format: DSST\_P\_S\_STONELEY\_VDL\_COLOR Vertical Scale: 1:200 Graphics File Created: 26-Aug-2002 04:30

### OP System Version: 10C0-306

MCM

MEST-B	10C0-306	DTA-A	10C0-306
SGT-N	10C0-306	DSST-B	OP10-KP1
DTC-H	10C0-306		

### Output DLIS Files

DEFAULT	FMS_DSI_013LUP	FN:22	PRODUCER	26-Aug-2002 04:30
REDUCE	FMS_DSI_013LUP	FN:23	PRODUCER	26-Aug-2002 04:30

### Output DLIS Files

DEFAULT	FMS_DSI_036LUP	FN:49	PRODUCER	26-Aug-2002 03:33	988.8 M	870.4 M
REDUCE	FMS_DSI_036LUP	FN:50	PRODUCER	26-Aug-2002 03:33	988.8 M	870.4 M

### OP System Version: 10C0-306

MCM

MEST-B	10C0-306	DTA-A	10C0-306
SGT-N	10C0-306	DSST-B	OP10-KP1
DTC-H	10C0-306		

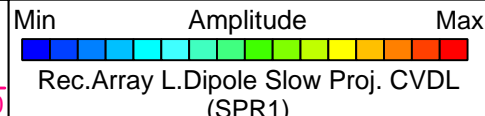
### PIP SUMMARY

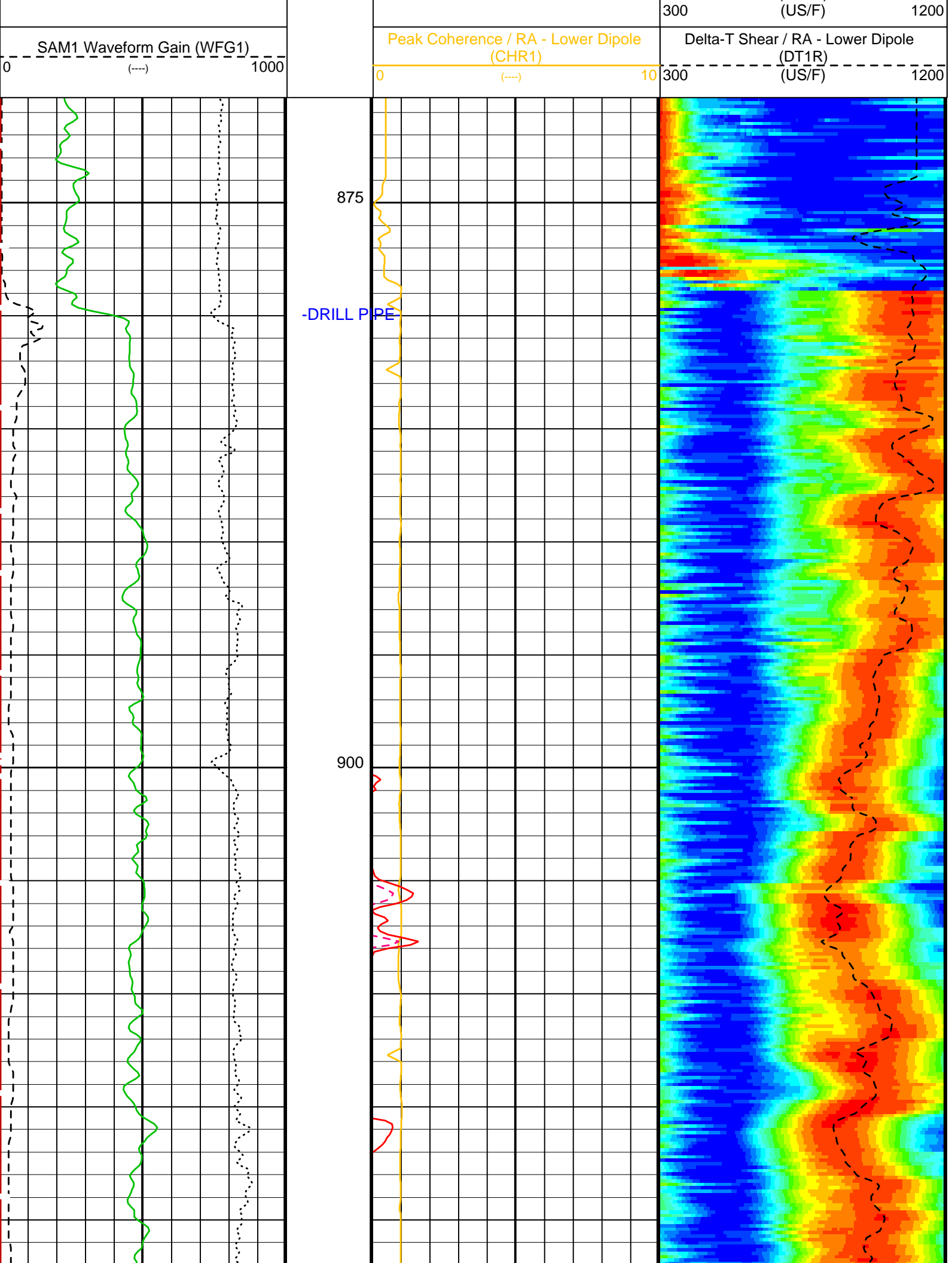
Time Mark Every 60 S

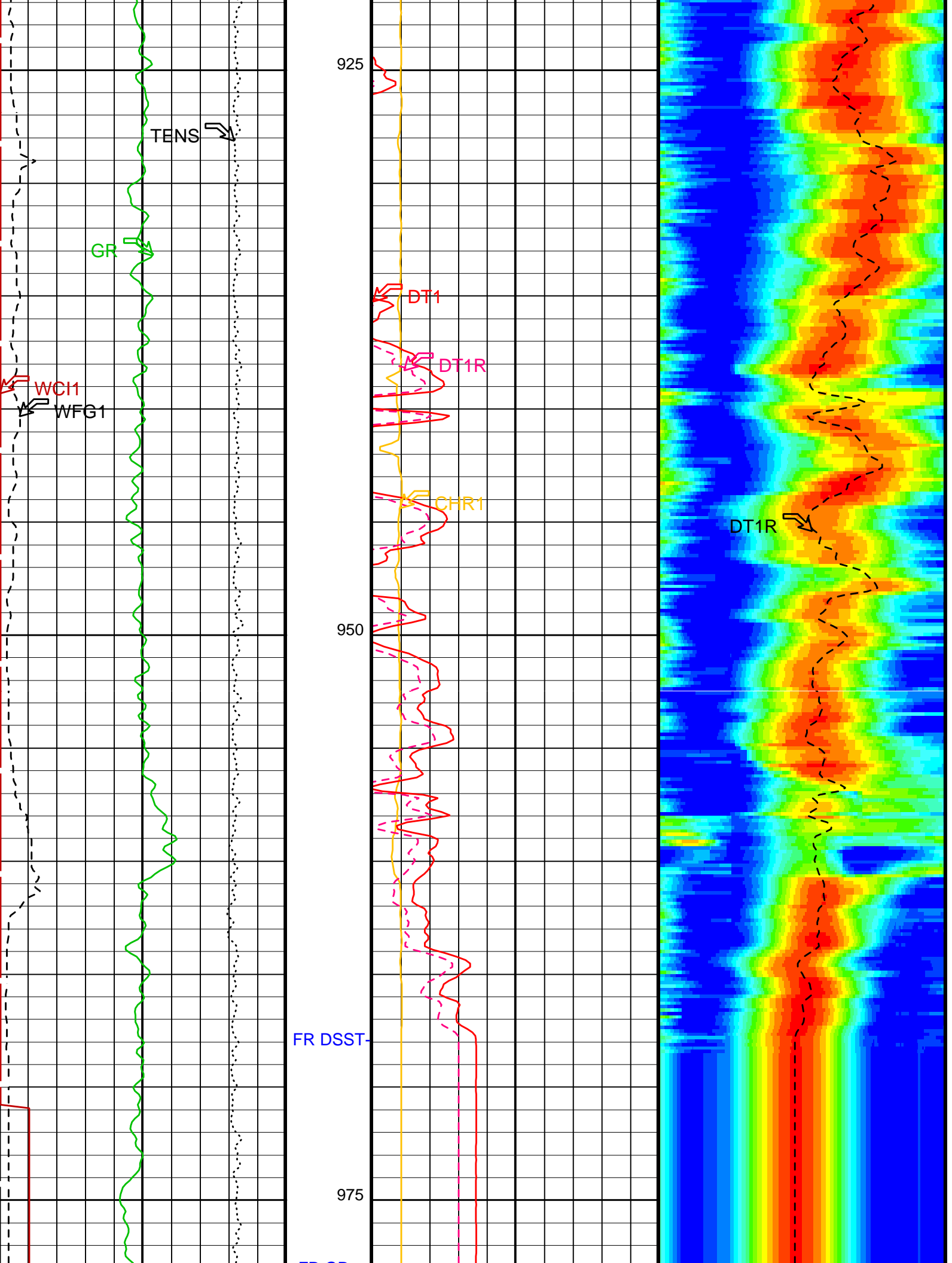
Waveform Data Copy Indicator 1 - Lower Dipole (WC11)	
0	10
Tension (TENS)	
10000	0
Gamma Ray (GR)	
0	100

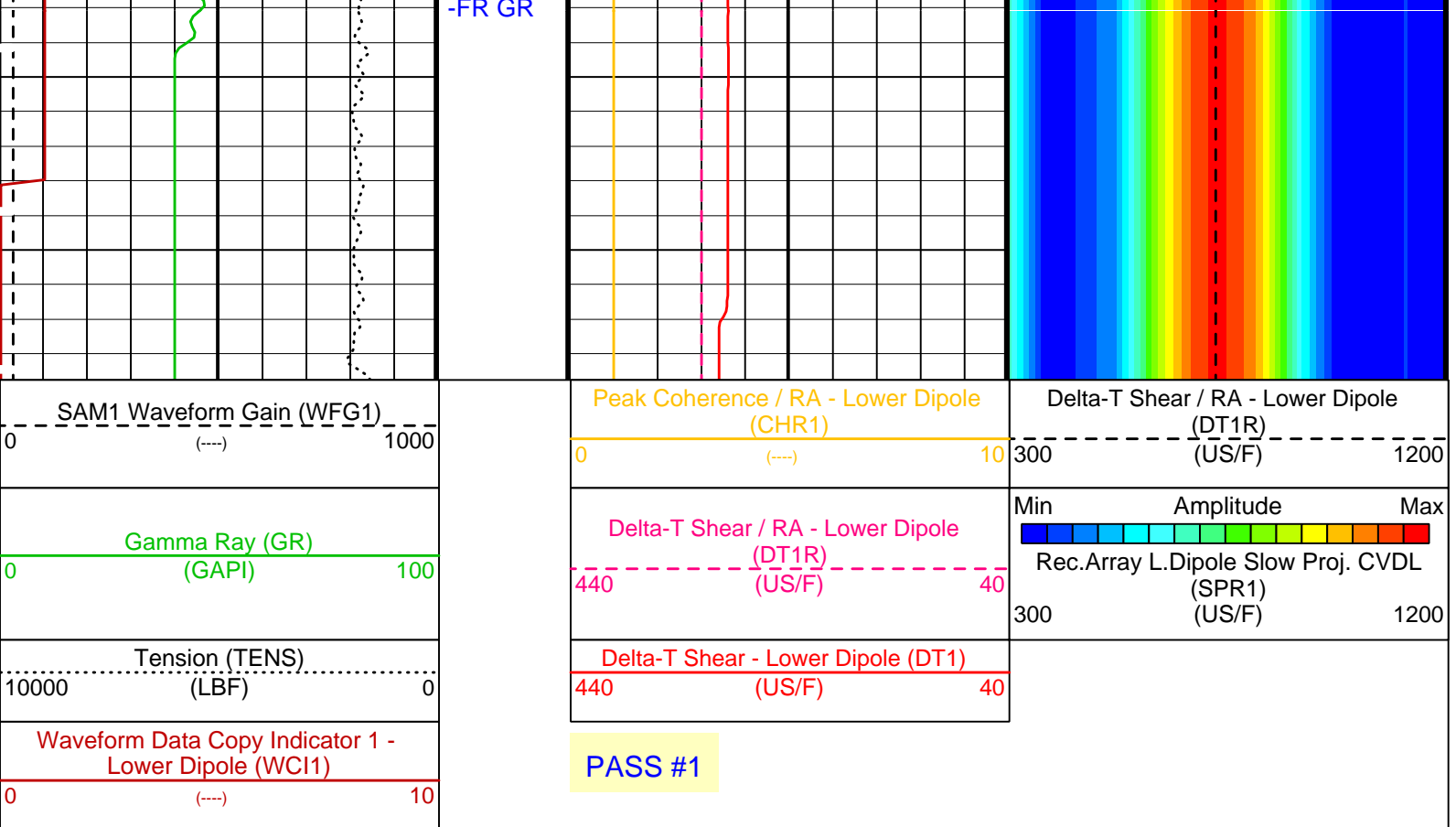
PASS #1

Delta-T Shear - Lower Dipole (DT1)	
440	40
Delta-T Shear / RA - Lower Dipole (DT1R)	
440	40









PIP SUMMARY

Time Mark Every 60 S

Parameters

DLIS Name	Description	Value
DSST-B: Dipole Shear Imager - B		
DDE1	Digitizing Delay 1	0 US
DDEX	Digitizing Delay X	0 US
DLCX	Label Compressional Source - Dipole Shear	USE
DSHL	Label Slowness Lower Limit - Dipole Shear	300 US/F
DSHU	Label Slowness Upper Limit - Dipole Shear	1200 US/F
DSI1	Digitizer Sample Interval 1	40 US
DSIX	Digitizer Sample Interval X	10 US
DTCS	Compressional Delta-T Source for DTCO Channel	PS_COMP
DWC1	Digitizer Word Count 1	512
DWCX	Digitizer Word Count X	512
LTXG	Lower Dipole Transmitter Geometry	156 IN
NWI1	Number Waveform Items 1	8
RX1G	Receiver 1 Geometry	294 IN
RX2G	Receiver 2 Geometry	300 IN
RX3G	Receiver 3 Geometry	306 IN
RX4G	Receiver 4 Geometry	312 IN
RX5G	Receiver 5 Geometry	318 IN
RX6G	Receiver 6 Geometry	324 IN
RX7G	Receiver 7 Geometry	330 IN
RX8G	Receiver 8 Geometry	336 IN
SAM1	DSST Sonic Acquisition Mode 1 - Lower Dipole Mode	LFD_EVEN
SAMX	DSST Sonic Acquisition Mode X - Both Dipoles or Monopole Mode for Expert	OFF
SAS1	STC Sonic Array Status - Lower Dipole	255
SBO1	STC Search Band Offset - Lower Dipole	3000 US
SBW1	STC Search Bandwidth - Lower Dipole	8000 US
SFC1	STC Formation Character - Lower Dipole	SELECTABLE
SFM1	STC Filter - Lower Dipole	B.3-1.5K
SLL1	STC Slowness Lower Limit - Lower Dipole	300 US/F
SST1	STC Slowness Step - Lower Dipole	4 US/F
SSW1	STC Source Waveform - Lower Dipole	WF_SAM1
SUL1	STC Slowness Upper Limit - Lower Dipole	1200 US/F
SWD1	STC Slowness Width - Lower Dipole	40 US/F
TBF1	STC Time for Baseline Fill - Lower Dipole	0 US
TLL1	STC Time Lower Limit - Lower Dipole	2450 US
TST1	STC Time Step - Lower Dipole	200 US
TUL1	STC Time Upper Limit - Lower Dipole	20440 US
TWD1	STC Time Width - Lower Dipole	2000 US
TW1	STC Integration Time Window - Lower Dipole	1600 US

## OP System Version: 10C0-306

MCM

MEST-B	10C0-306	DTA-A	10C0-306
SGT-N	10C0-306	DSST-B	OP10-KP1
DTC-H	10C0-306		

### Output DLIS Files

DEFAULT	FMS_DSI_036LUP	FN:49	PRODUCER	26-Aug-2002 03:33
REDUCE	FMS_DSI_036LUP	FN:50	PRODUCER	26-Aug-2002 03:33

### Output DLIS Files

DEFAULT	FMS_DSI_036LUP	FN:49	PRODUCER	26-Aug-2002 03:33	988.8 M	870.4 M
REDUCE	FMS_DSI_036LUP	FN:50	PRODUCER	26-Aug-2002 03:33	988.8 M	870.4 M

## OP System Version: 10C0-306

MCM

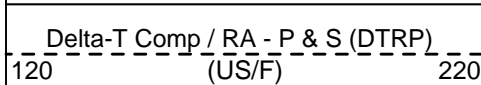
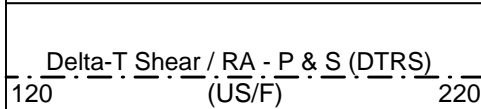
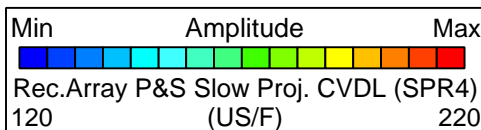
MEST-B	10C0-306	DTA-A	10C0-306
SGT-N	10C0-306	DSST-B	OP10-KP1
DTC-H	10C0-306		

### PIP SUMMARY

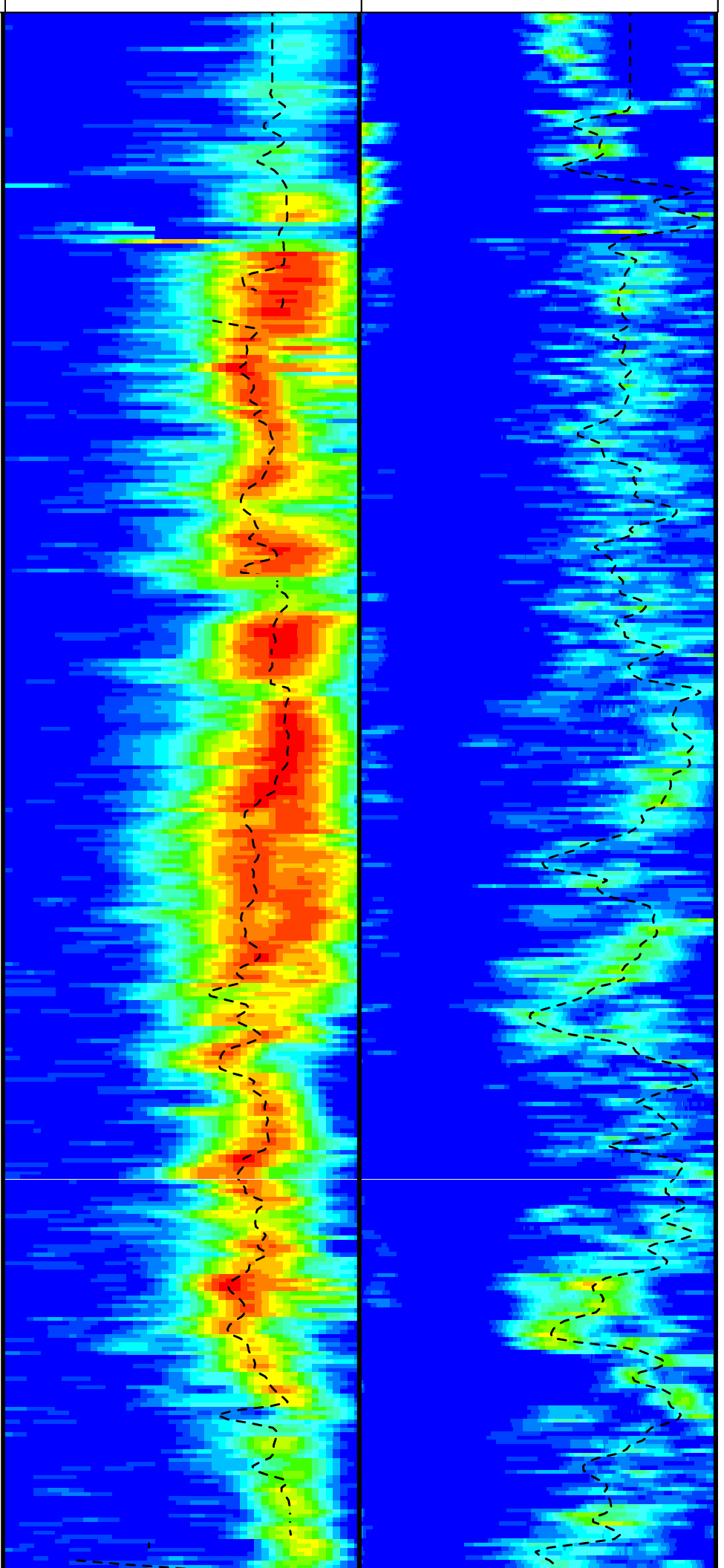
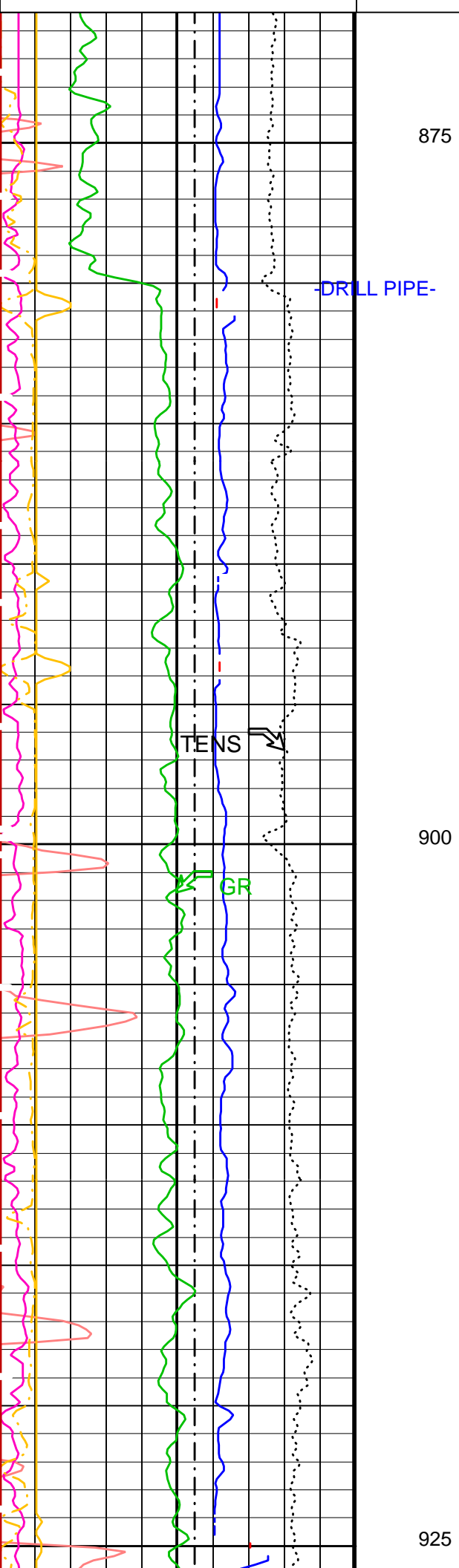
Time Mark Every 60 S

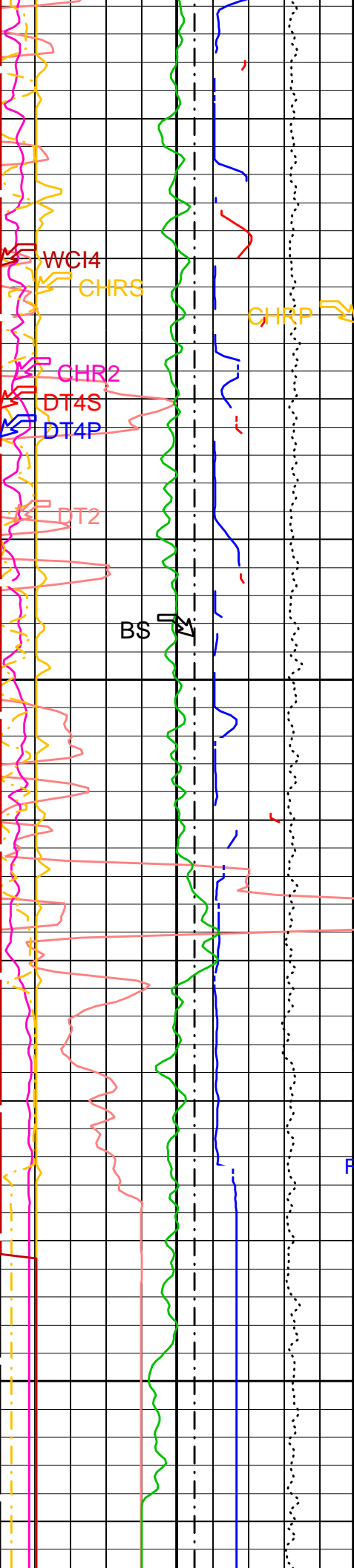
<b>Waveform Data Copy Indicator 4 - Monopole P&amp;S (WCI4)</b>	(---)	10
<b>Peak Coherence / RA - P &amp; S Shear (CHRS)</b>	(---)	9
<b>Peak Coherence / RA - P &amp; S Comp (CHRP)</b>	(---)	10
<b>Peak Coherence / RA - Upper Dipole (CHR2)</b>	(---)	10
<b>Tension (TENS)</b>	(LBF)	0
<b>Gamma Ray (GR)</b>	(GAPI)	100
<b>Delta-T Shear - P &amp; S (DT4S)</b>	(US/F)	40
<b>Delta-T Comp - P &amp; S (DT4P)</b>	(US/F)	40
<b>Delta-T Shear - Upper Dipole (DT2)</b>	(US/F)	40
<b>Bit Size (BS)</b>	(IN)	16

PASS 1







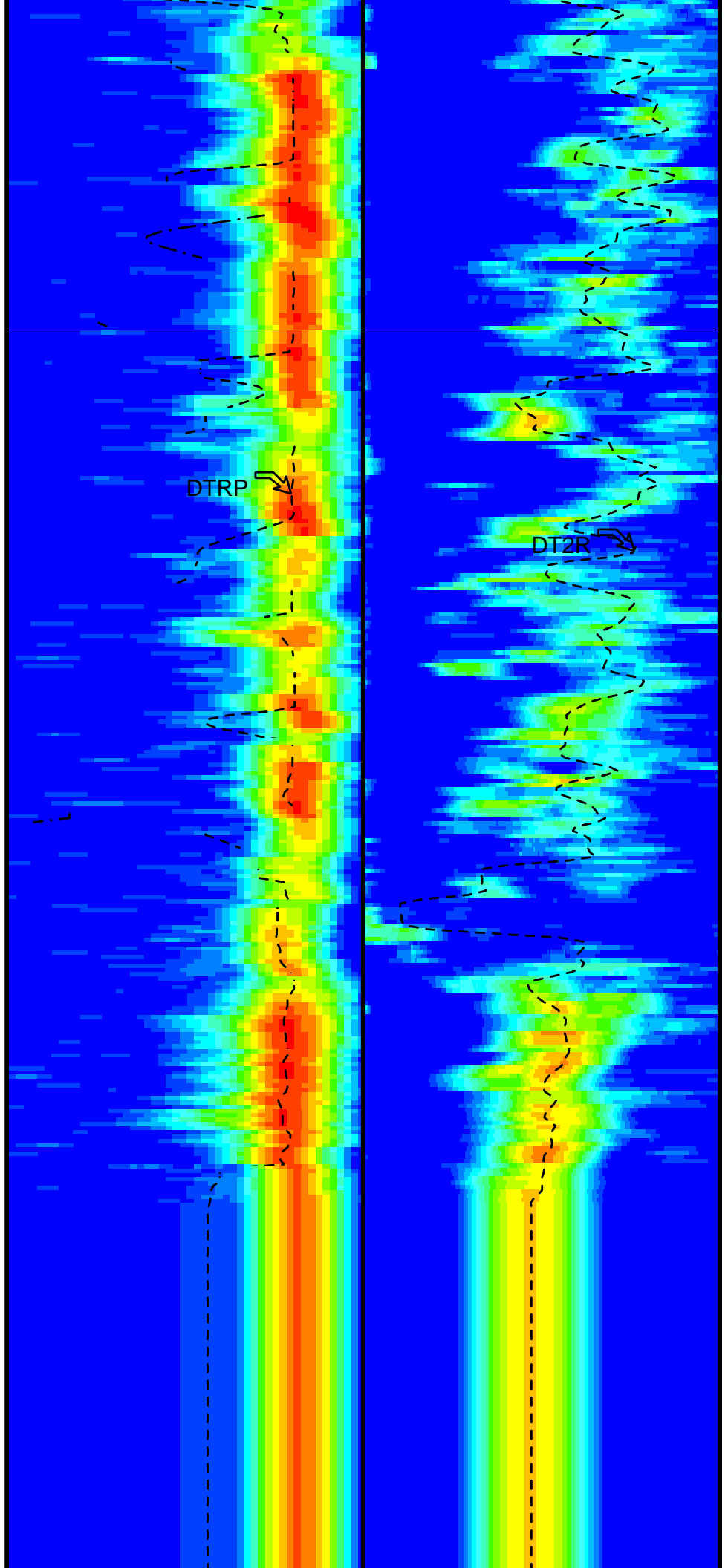


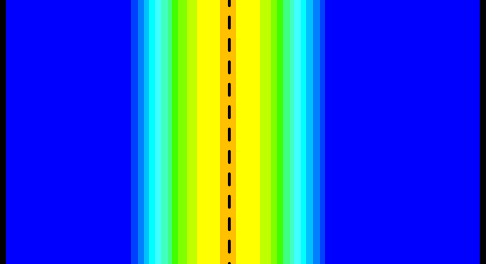
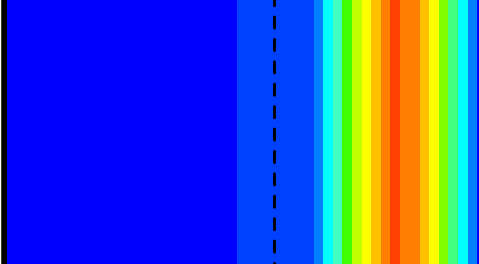
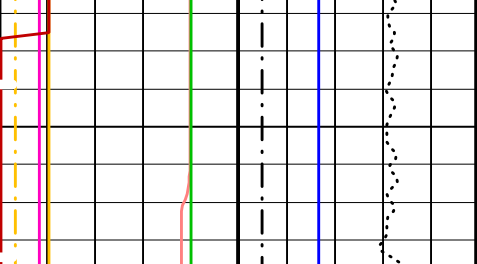
950

FR DSST-

975

-FR GR





Bit Size (BS) (IN)	6	16
Delta-T Shear - Upper Dipole (DT2) (US/F)	440	40
Delta-T Comp - P & S (DT4P) (US/F)	440	40
Delta-T Shear - P & S (DT4S) (US/F)	440	40
Gamma Ray (GR) (GAPI)	0	100
Tension (TENS) (LBF)	10000	0
Peak Coherence / RA - Upper Dipole (CHR2)	0	10
Peak Coherence / RA - P & S Comp (CHRP)	0	10
Peak Coherence / RA - P & S Shear (CHRS)	-1	9
Waveform Data Copy Indicator 4 - Monopole P&S (WCI4)	0	10

Delta-T Comp / RA - P & S (DTRP) (US/F)	120	220
Delta-T Shear / RA - P & S (DTRS) (US/F)	120	220
Min Amplitude Max Rec.Array P&S Slow Proj. CVDL (SPR4) (US/F)	120	220

Delta-T Shear / RA - Upper Dipole (DT2R) (US/F)	300	1200
Min Amplitude Max Rec.Array U.Dipole Slow Proj. CVDL (SPR2) (US/F)	300	1200

PASS 1

PIP SUMMARY

Time Mark Every 60 S

Parameters

DLIS Name	Description	Value
BHS	SGT-N: Scintillation Gamma-Ray - N Borehole Status	OPEN
BHS	DSST-B: Dipole Shear Imager - B Borehole Status	OPEN
CASF	Label Casing Function - Monopole P&S	50
COLL	Label Slowness Lower Limit - Monopole P&S Compressional	120 US/F
COUL	Label Slowness Upper Limit - Monopole P&S Compressional	200 US/F
DDE2	Digitizing Delay 2	0 US
DDE4	Digitizing Delay 4	0 US
DDEX	Digitizing Delay X	0 US
DLCS	Label Compressional Source - Dipole Shear	USE
DSHL	Label Slowness Lower Limit - Dipole Shear	300 US/F
DSHU	Label Slowness Upper Limit - Dipole Shear	1200 US/F
DSI2	Digitizer Sample Interval 2	40 US
DSI4	Digitizer Sample Interval 4	10 US
DSIX	Digitizer Sample Interval X	10 US
DTCS	Compressional Delta-T Source for DTCS Channel	PS_COMP
DTF	Delta-T Fluid	189 US/F
DWC2	Digitizer Word Count 2	512

DWC2	Digitizer Word Count 2	512	
DWC4	Digitizer Word Count 4	512	
DWCX	Digitizer Word Count X	512	
FILG	Label Fill Gap Control - Monopole P&S	COMP_SHEAR	
LFC	Label Formation Character - Monopole P&S	COMP_FIRST	
MCS	Mean Casing Slowness	57	US/F
MTXG	Monopole Transmitter Geometry	186	IN
NWI2	Number Waveform Items 2	8	
NWI4	Number Waveform Items 4	8	
RSMN	Label Shear/Compressional Minimum Ratio - Monopole P&S	1.4	
RSMX	Label Shear/Compressional Maximum Ratio - Monopole P&S	2.12	
RX1G	Receiver 1 Geometry	294	IN
RX2G	Receiver 2 Geometry	300	IN
RX3G	Receiver 3 Geometry	306	IN
RX4G	Receiver 4 Geometry	312	IN
RX5G	Receiver 5 Geometry	318	IN
RX6G	Receiver 6 Geometry	324	IN
RX7G	Receiver 7 Geometry	330	IN
RX8G	Receiver 8 Geometry	336	IN
SAM2	DSST Sonic Acquisition Mode 2 - Upper Dipole Mode	ODD	
SAM4	DSST Sonic Acquisition Mode 4 - High Frequency Monopole Mode for P&S	LFD_EVEN	
SAMX	DSST Sonic Acquisition Mode X - Both Dipoles or Monopole Mode for Expert	OFF	
SAS2	STC Sonic Array Status - Upper Dipole	255	
SAS4	STC Sonic Array Status - Monopole P&S	255	
SBO2	STC Search Band Offset - Upper Dipole	3000	US
SBO4	STC Search Band Offset - Monopole P&S	500	US
SBR4	STC Baseline Removal - Monopole P&S	ON	
SBW2	STC Search Bandwidth - Upper Dipole	8000	US
SBW4	STC Search Bandwidth - Monopole P&S	2000	US
SFC2	STC Formation Character - Upper Dipole	SELECTABLE	
SFC4	STC Formation Character - Monopole P&S	SELECTABLE	
SFM2	STC Filter - Upper Dipole	B1-3K	
SFM4	STC Filter - Monopole P&S	B3-12K	
SHLL	Label Slowness Lower Limit - Monopole P&S Shear	120	US/F
SHUL	Label Slowness Upper Limit - Monopole P&S Shear	200	US/F
SLL2	STC Slowness Lower Limit - Upper Dipole	300	US/F
SLL4	STC Slowness Lower Limit - Monopole P&S	120	US/F
SST2	STC Slowness Step - Upper Dipole	4	US/F
SST4	STC Slowness Step - Monopole P&S	2	US/F
SSW2	STC Source Waveform - Upper Dipole	WF_SAM2	
SSW4	STC Source Waveform - Monopole P&S	WF_SAM4	
STLL	Label Slowness Lower Limit - Monopole Stoneley	180	US/F
STUL	Label Slowness Upper Limit - Monopole Stoneley	780	US/F
SUL2	STC Slowness Upper Limit - Upper Dipole	1200	US/F
SUL4	STC Slowness Upper Limit - Monopole P&S	220	US/F
SWD2	STC Slowness Width - Upper Dipole	40	US/F
SWD4	STC Slowness Width - Monopole P&S	10	US/F
TBF2	STC Time for Baseline Fill - Upper Dipole	0	US
TBF4	STC Time for Baseline Fill - Monopole P&S	300	US
TLL2	STC Time Lower Limit - Upper Dipole	2300	US
TLL4	STC Time Lower Limit - Monopole P&S	580	US
TST2	STC Time Step - Upper Dipole	200	US
TST4	STC Time Step - Monopole P&S	50	US
TUL2	STC Time Upper Limit - Upper Dipole	20200	US
TUL4	STC Time Upper Limit - Monopole P&S	3480	US
TWD2	STC Time Width - Upper Dipole	2000	US
TWD4	STC Time Width - Monopole P&S	1000	US
TWI2	STC Integration Time Window - Upper Dipole	1600	US
TWI4	STC Integration Time Window - Monopole P&S	500	US
TWSX	Transmitter Waveform Select X	0	
UTXG	Upper Dipole Transmitter Geometry	162	IN
WFM4	Waveform Mode 4	W1	
BS	System and Miscellaneous Bit Size	11.438	IN

Format: DSST\_P\_S\_UPPER\_VDL\_COLOR      Vertical Scale: 1:200      Graphics File Created: 26-Aug-2002 03:33

**OP System Version: 10C0-306**  
MCM

MEST-B	10C0-306	DTA-A	10C0-306
SGT-N	10C0-306	DSST-B	OP10-KP1
DTC-H	10C0-306		

**Output DLIS Files**

DEFAULT	FMS_DSI_036LUP	FN:49	PRODUCER	26-Aug-2002 03:33
REDUCE	FMS_DSI_036LUP	FN:50	PRODUCER	26-Aug-2002 03:33

Calibration and Check Summary

Measurement	Nominal	Master	Before	After	Change	Limit	Units
-------------	---------	--------	--------	-------	--------	-------	-------

Micro Electrical Scanner - B (Slim) Wellsite Calibration - Caliper Calibration

Before: Calibration out of date 27-Jul-2002 15:28

Caliper 1 Zero Measurement	12.00	N/A	12.52	N/A	N/A	N/A	IN
Caliper 2 Zero Measurement	12.00	N/A	11.83	N/A	N/A	N/A	IN
Caliper 1 Plus Measurement	15.25	N/A	15.63	N/A	N/A	N/A	IN
Caliper 2 Plus Measurement	15.25	N/A	15.10	N/A	N/A	N/A	IN

Micro Electrical Scanner - B (Slim) Wellsite Calibration - CROUZET ACCELEROMETER PROM HAS BEEN READ CORRECTLY

Before: 26-Aug-2002 2:48

TEMPERATURE REFERENCE :	N/A	N/A	20	N/A	N/A	N/A	DEGC
YEAR OF CALIBRATION :	N/A	N/A	99	N/A	N/A	N/A	
MONTH OF CALIBRATION :	N/A	N/A	3	N/A	N/A	N/A	
SERIAL NUMBER :	N/A	N/A	743	N/A	N/A	N/A	

Micro Electrical Scanner - B (Slim) Wellsite Calibration - CROUZET MAGNETOMETER PROM HAS BEEN READ CORRECTLY

Before: 26-Aug-2002 2:48

TEMPERATURE REFERENCE :	N/A	N/A	25	N/A	N/A	N/A	DEGC
YEAR OF CALIBRATION :	N/A	N/A	91	N/A	N/A	N/A	
MONTH OF CALIBRATION :	N/A	N/A	5	N/A	N/A	N/A	
SERIAL NUMBER :	N/A	N/A	98	N/A	N/A	N/A	

Scintillation Gamma-Ray - N Wellsite Calibration - Detector Calibration

Before: Calibration out of date 27-Jul-2002 15:08

Gamma Ray (Jig - Bkg)	164.1	N/A	164.1	N/A	N/A	14.92	GAPI
Gamma Ray (Calibrated)	165.0	N/A	165.0	N/A	N/A	15.00	GAPI

Micro Electrical Scanner - B (Slim) / Equipment Identification

Primary Equipment:

MEST Sonde - B	MEDS - B
MEST Preamplifier Cartridge - AB	MEPC - AB
GPIT Cartridge - A	GPIC - A
MEST Acquisition Cartridge - A	MEAC - A

Auxiliary Equipment:

MEST-B Preamplifier Cartridge Housing	MEPH - A
MEST Acquisition Cartridge Housing (Slim)	MEAH - B

Scintillation Gamma-Ray - N / Equipment Identification

Primary Equipment:

Scintillation Gamma Cartridge	SGC - TB
Scintillation Gamma Detector	SGD - TAA

Auxiliary Equipment:

Scintillation Gamma Housing	SGH - K
Gamma Source Radioactive	GSR - U/Y

Scintillation Gamma-Ray - N Wellsite Calibration

Detector Calibration

Phase	Gamma Ray Background GAPI	Value	Phase	Gamma Ray (Jig - Bkg) GAPI	Value	Phase	Gamma Ray (Calibrated) GAPI	Value
Before		4.854	Before		164.1	Before		165.0
	0 (Minimum) 30.00 (Nominal) 120.0 (Maximum)			149.2 (Minimum) 164.1 (Nominal) 179.0 (Maximum)			150.0 (Minimum) 165.0 (Nominal) 180.0 (Maximum)	

Before: Calibration out of date 27-Jul-2002 15:08

Company: Lamont Doherty

**Schlumberger**

Well: ODP Leg 204, Site 1250F

Field: Hydrate Ridge

Ocean: Pacific

State: Oregon

Dipole Shear Sonic  
P&S Compressional Monopole  
Gamma Ray