



COMPANY: LAMONT DOHERTY

WELL: ODP 1251A

FIELD: HYDRATE RIDGE

STATE: OREGON

COUNTRY: U.S.A

Date Processed:                      Date Logged:

Job Number:                      Processed at:

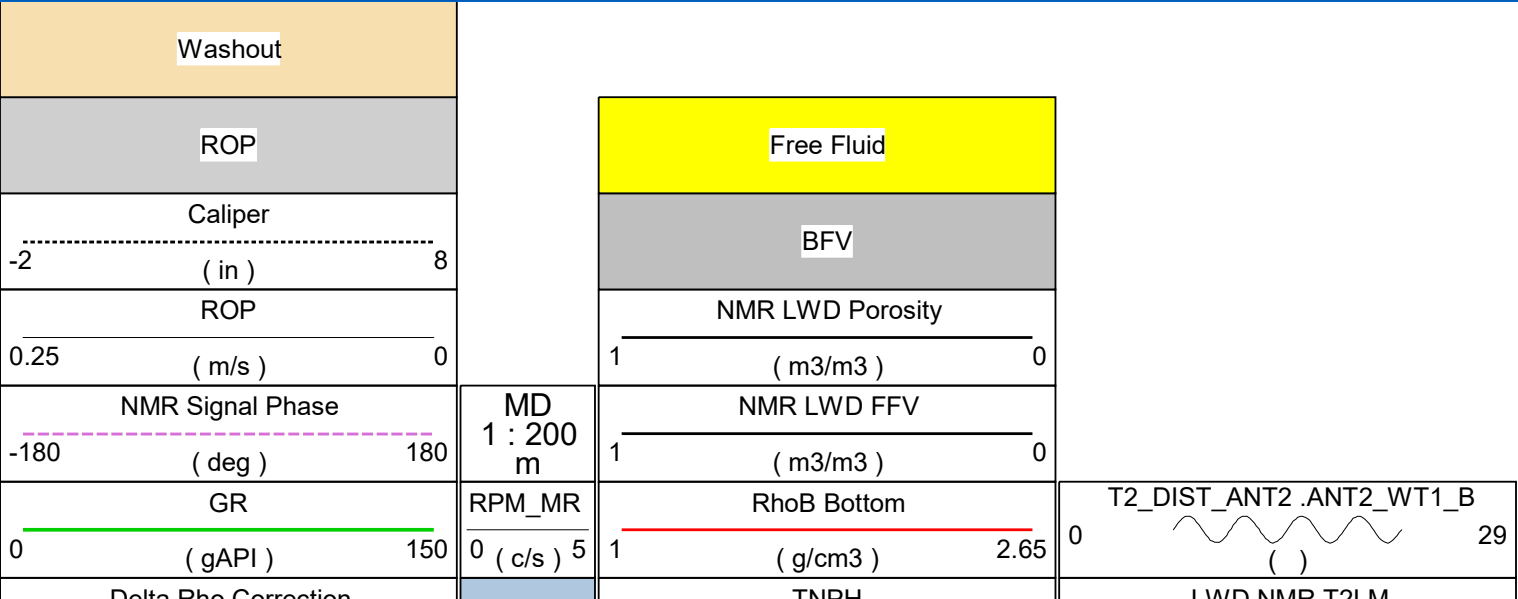
Well Location:                      Longitude:

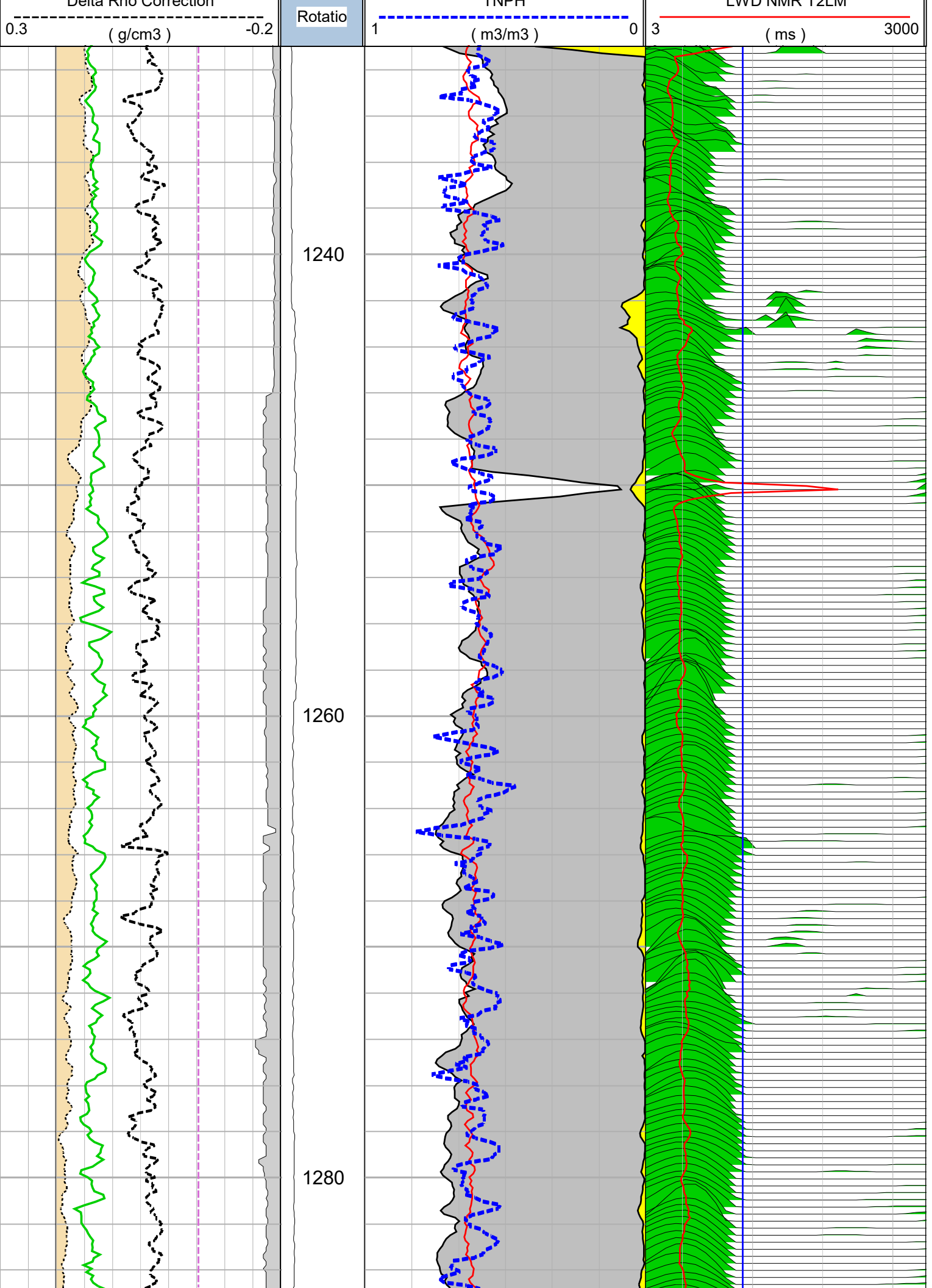
Latitude:                      DF:                      GL:

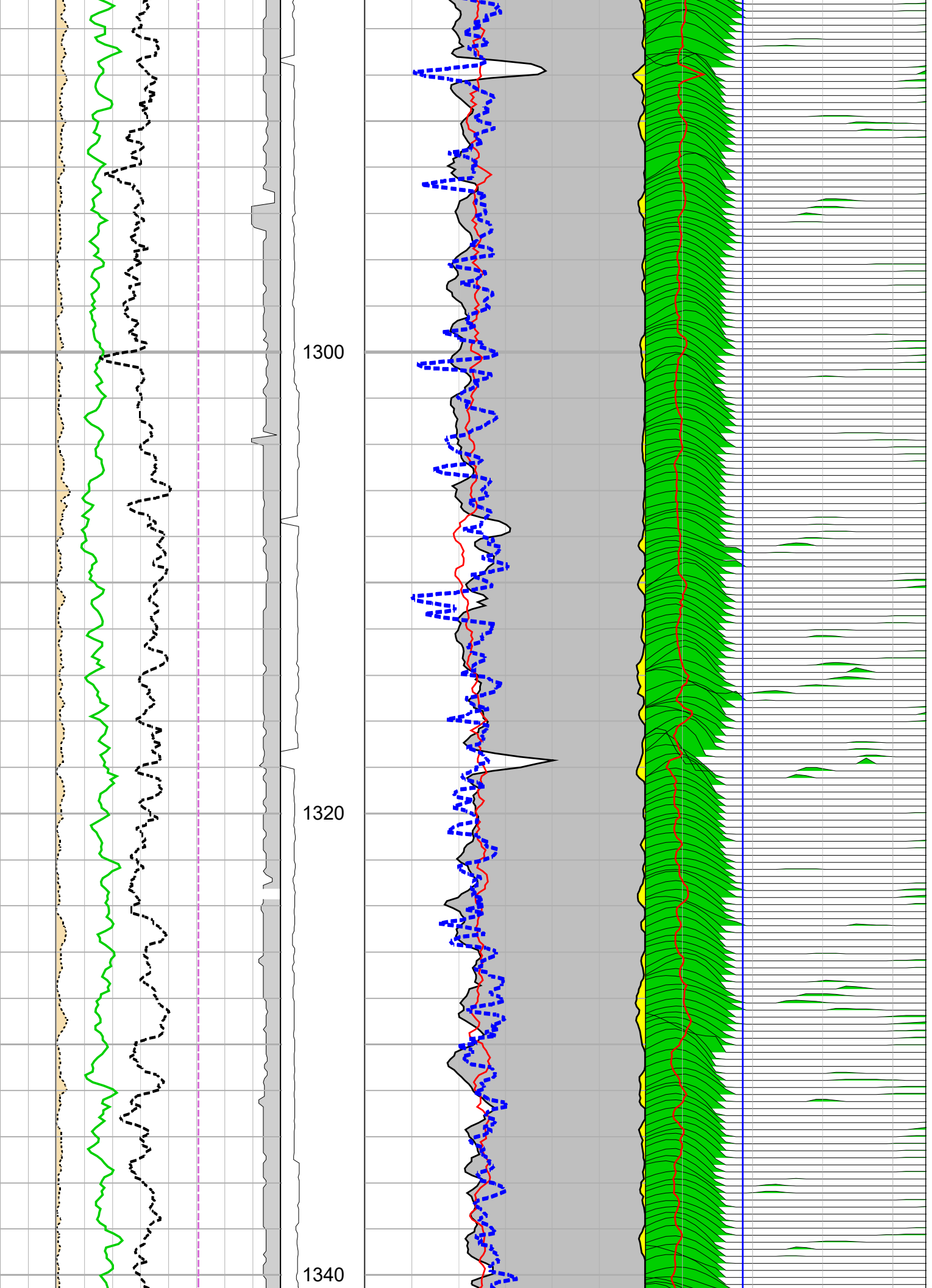
Elevations:                      KB:                      GL:

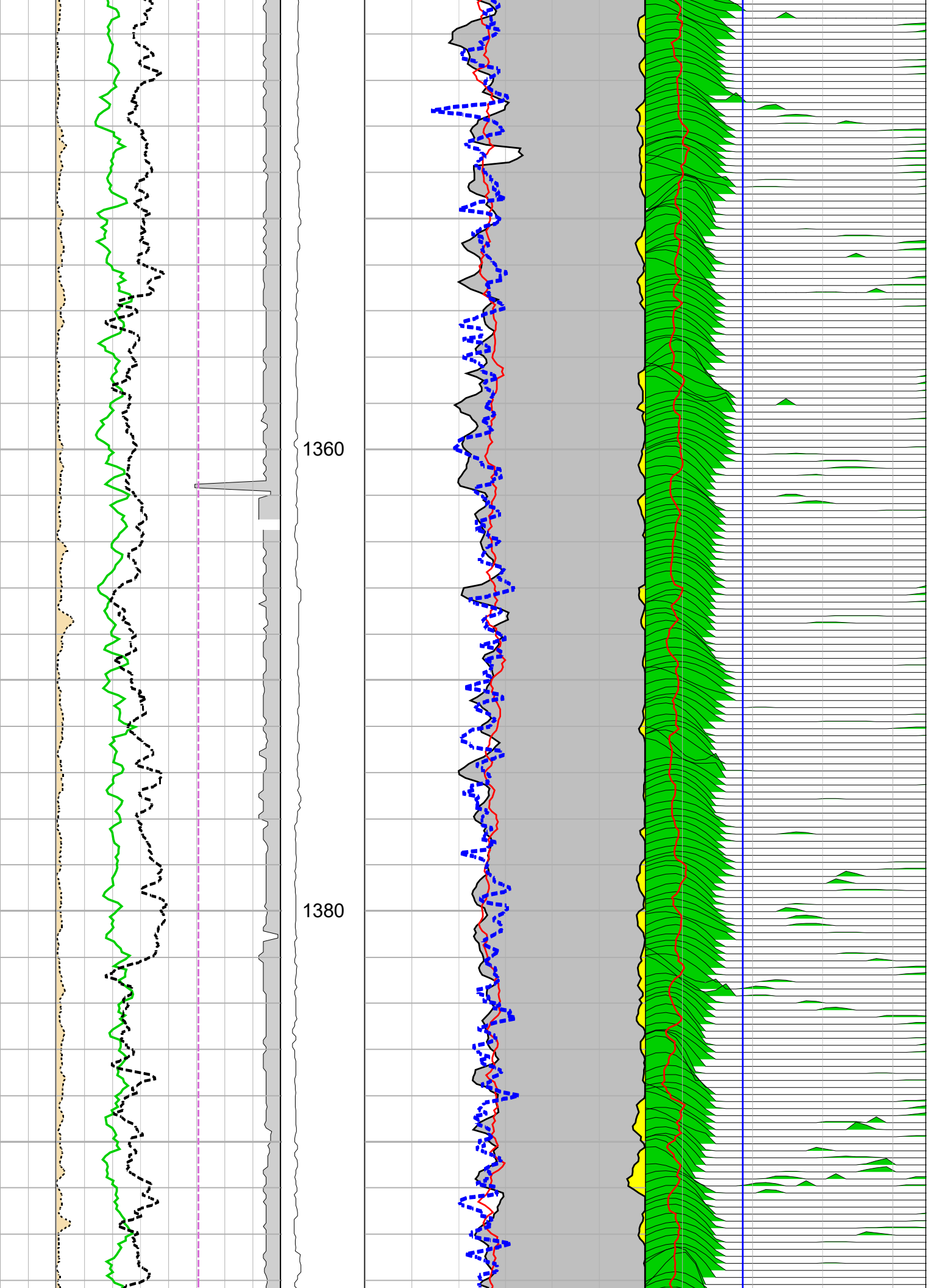
FOLD HERE                      The well name, location and borehole reference data were furnished by the customer.

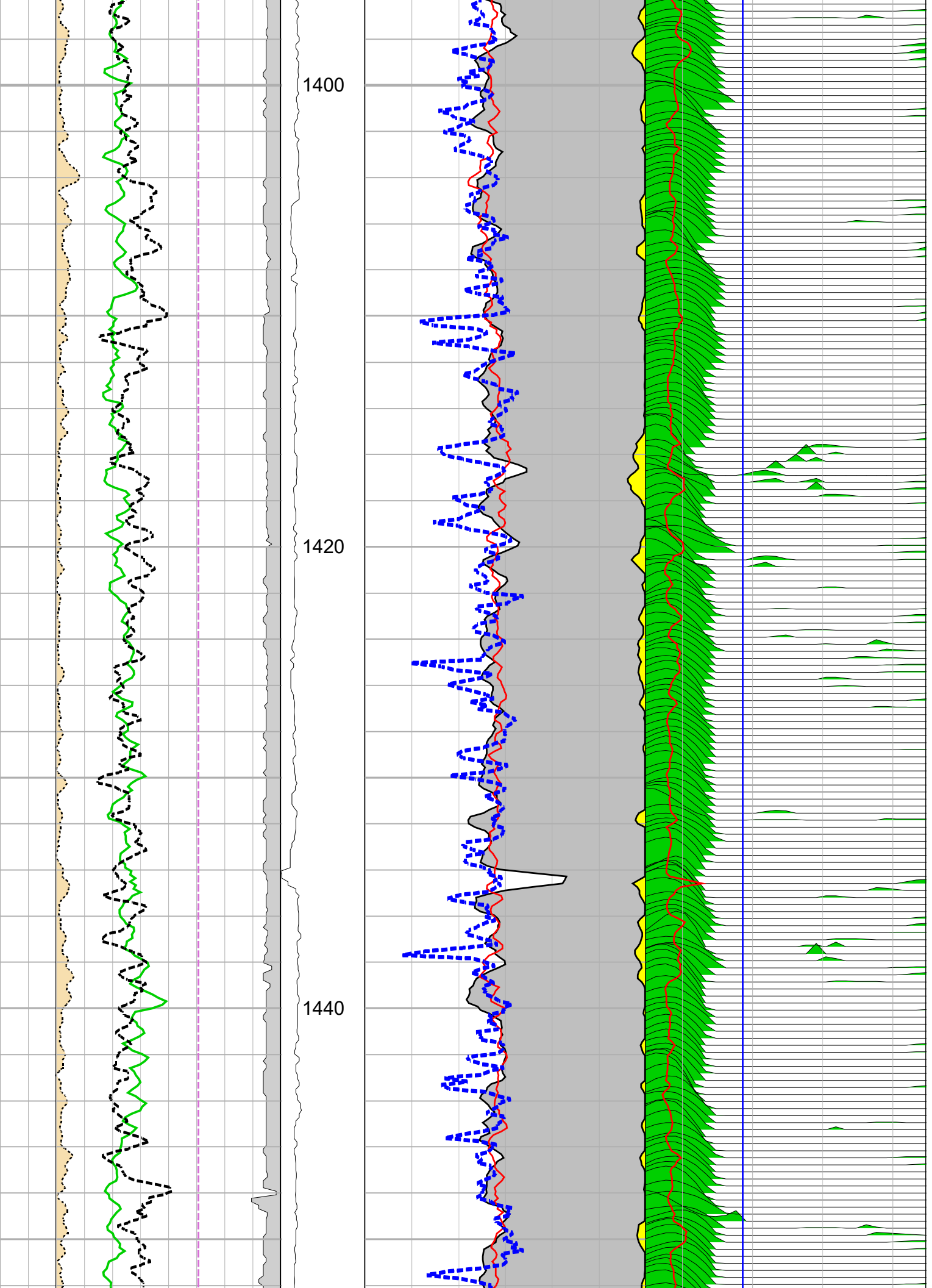
All interpretations are opinions based on inferences from electrical or other measurements and we cannot, and do not guarantee the accuracy or correctness of any interpretation, and we shall not, except in the case of gross or willful negligence on our part, be liable or responsible for any loss, costs, damages or expenses incurred or sustained by anyone resulting from any interpretations made by any of our officers, agents or employees. These interpretations are also subject to Clause 4 of our General Terms and Conditions as set out in our current Price Schedule.

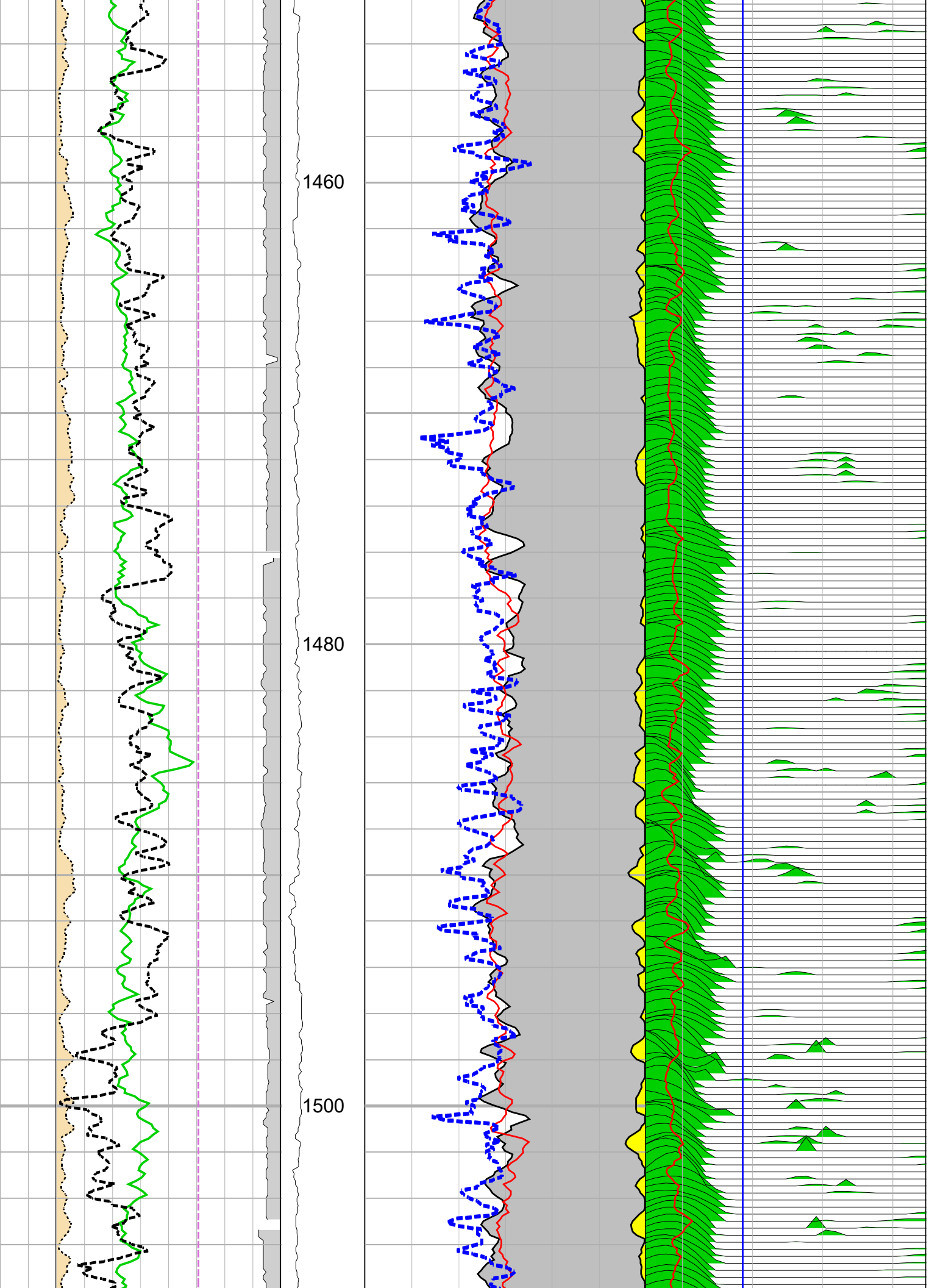


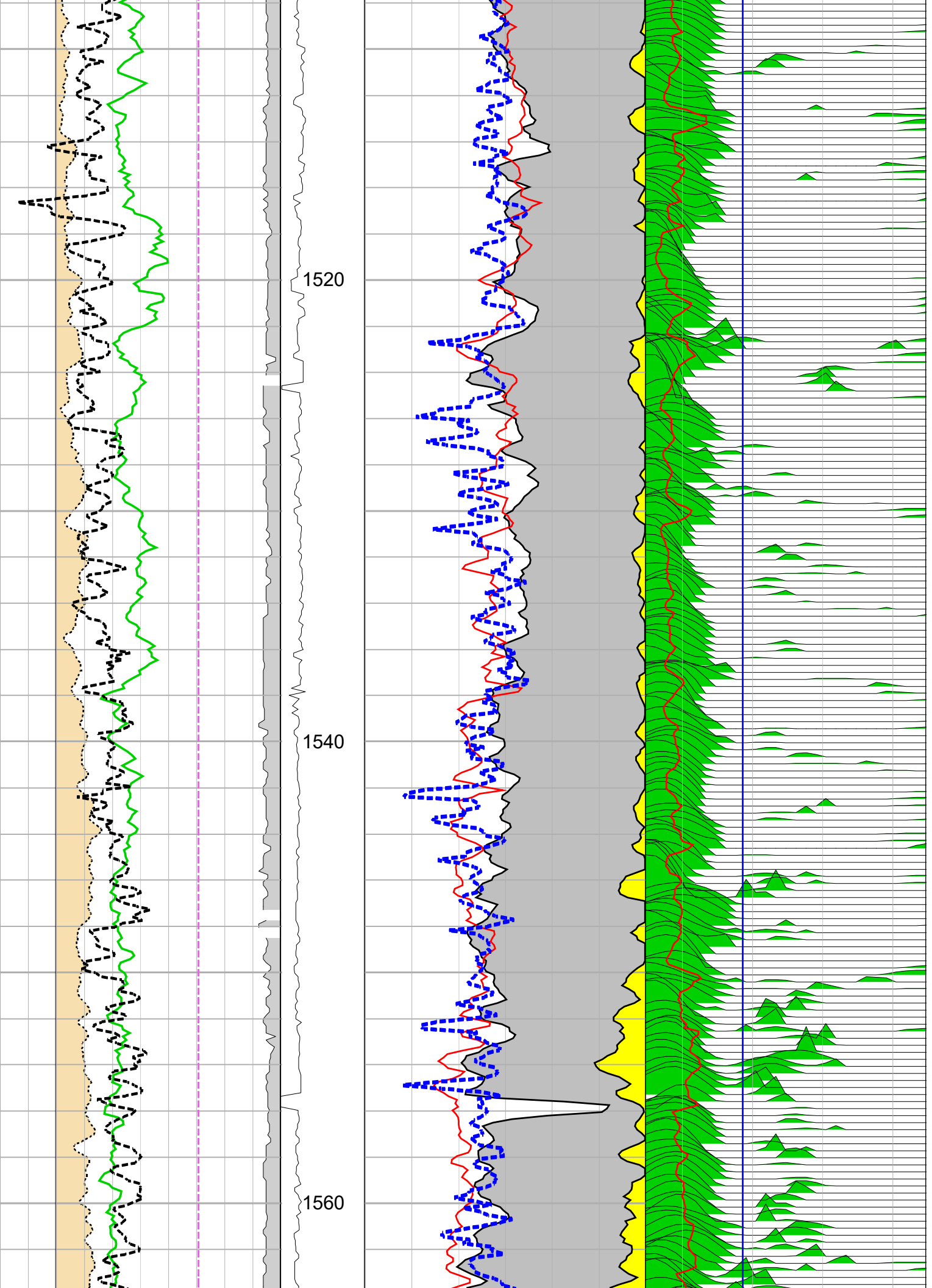




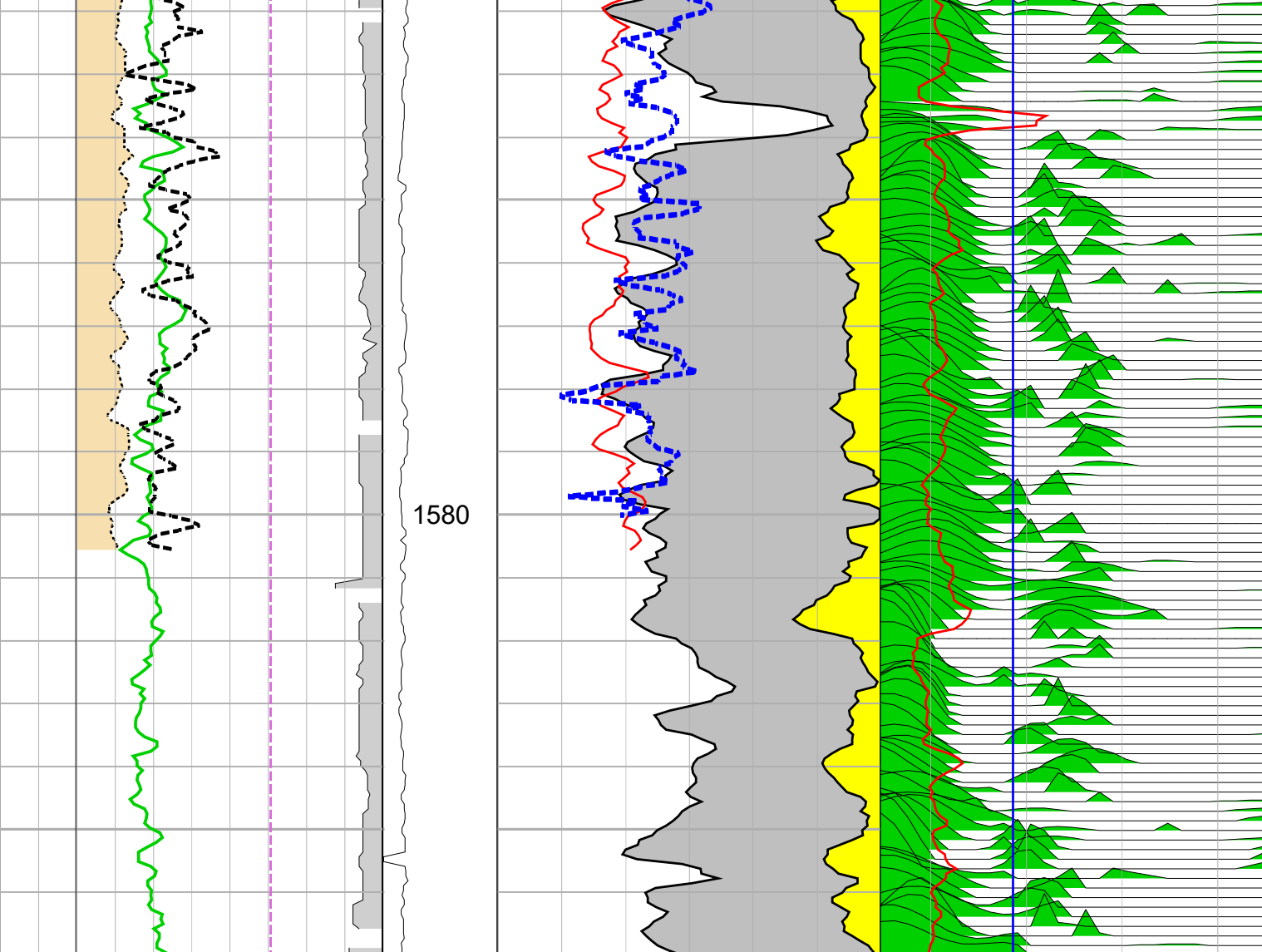












<div>Delta Rho Correction</div> <div>0.3 ( g/cm3 ) -0.2</div>	<div>Rotatio</div>	<div>TNPH</div> <div>1 ( m3/m3 ) 0</div>	<div>LWD NMR T2LM</div> <div>3 ( ms ) 3000</div>
<div>GR</div> <div>0 ( gAPI ) 150</div>	<div>RPM_MR</div> <div>0 ( c/s ) 5</div>	<div>RhoB Bottom</div> <div>1 ( g/cm3 ) 2.65</div>	<div>T2_DIST_ANT2 .ANT2_WT1_B</div> <div>0 ( ) 29</div>
<div>NMR Signal Phase</div> <div>-180 ( deg ) 180</div>	<div>MD</div> <div>1 : 200 m</div>	<div>NMR LWD FFV</div> <div>1 ( m3/m3 ) 0</div>	
<div>ROP</div> <div>0.25 ( m/s ) 0</div>		<div>NMR LWD Porosity</div> <div>1 ( m3/m3 ) 0</div>	
<div>Caliper</div> <div>-2 ( in ) 8</div>		<div>BFV</div>	
<div>ROP</div>		<div>Free Fluid</div>	
<div>Washout</div>			