

Schlumberger

Company: Lamont Doherty Earth Observatory

Well: ODP Leg 205, Site 1253A

Field: Costa Rica

Country: Costa Rica **Ocean:** Pacific

**Hostile Natural Gamma Ray
Sonde**

Country: Costa Rica		Elev.: K.B. 11.3 m	
Field: Costa Rica		G.L. 0 m	
Location: Well: ODP Leg 205, Site 1253A		D.F. 11 m	
Company: Lamont Doherty Earth Observatory			
LOCATION			
Permanent Datum: _____		Mean Sea Level _____	
Log Measured From: _____		Rig Floor _____	
Drilling Measured From: _____		Rig Floor _____	
API Serial No. _____		Max. Hole Devi. _____	
Logging Date: 8-Oct-2002		Longitude: 86° 11.4' W	
		Latitude: 9° 38.9' N	

Logging Date	8-Oct-2002
Run Number	One
Depth Driller	4987 m
Schlumberger Depth	4987 m
Bottom Log Interval	4917 m
Top Log Interval	4387 m
Casing Driller Size @ Depth	0.000 in @ 4800 m
Casing Schlumberger	4800 m
Bit Size	9.875 in
Type Fluid In Hole	Septicite Salt Water Base

Type Fluid In Hole		Density	Viscosity
MUD		Fluid Loss	PH
Source Of Sample		Mud Pit	

RM @ Measured Temperature	0.322 ohm.m	@	27 degC
RMF @ Measured Temperature		@	
RMC @ Measured Temperature		@	
Source RMF	RMC		
RM @ MRT	RMF @ MRT	@	@
Maximum Recorded Temperatures			
Circulation Stopped	Time		18:00
Logger On Bottom	Time		10:05
Unit Number	99	Location	Houston-ODP
Recorded By	Javier Espinosa		
Witnessed By	M. Kyaw, J. Morris, H. Villinger		

		Run 1	Run 2	Run
Logging Date				
Run Number				
Depth Driller				
Schlumberger Depth				
Bottom Log Interval				
Top Log Interval				
Casing Driller Size @ Depth				
Casing Schlumberger				
Bit Size				
Type Fluid In Hole				
Density				
Viscosity				
Fluid Loss				
PH				
Source Of Sample				
RM @ Measured Temperature				
RMF @ Measured Temperature				
RMC @ Measured Temperature				
Source RMF	RMC			
RM @ MRT	RMF @ MRT	@	@	
Maximum Recorded Temperatures				
Circulation Stopped	Time			
Logger On Bottom	Time			
Unit Number				
Location				
Recorded By				
Witnessed By				

DISCLAIMER

THE USE OF AND RELIANCE UPON THIS RECORDED-DATA BY THE HEREIN NAMED COMPANY (AND ANY OF ITS AFFILIATES, PARTNERS, REPRESENTATIVES, AGENTS, CONSULTANTS AND EMPLOYEES) IS SUBJECT TO THE TERMS AND CONDITIONS AGREED UPON BETWEEN SCHLUMBERGER AND THE COMPANY, INCLUDING: (a) RESTRICTIONS ON USE OF THE RECORDED-DATA; (b) DISCLAIMERS AND WAIVERS OF WARRANTIES AND REPRESENTATIONS REGARDING COMPANY'S USE OF AND RELIANCE UPON THE RECORDED-DATA; AND (c) CUSTOMER'S FULL AND SOLE RESPONSIBILITY FOR ANY INFERENCE DRAWN OR DECISION MADE IN CONNECTION WITH THE USE OF THIS RECORDED-DATA.

OTHER SERVICES1 OS1: HLTD OS2: MEST OS3: DSST OS4: OS5: DIT	OTHER SERVICES2 OS1: OS2: OS3: OS4: OS5:
REMARKS: RUN NUMBER 1 Logs not depth corrected. Corrections applied as per parameter listing below main pass. Caliper wide open in some sections and data may be invalid	REMARKS: RUN NUMBER 2

RUN 1			RUN 2		
SERVICE ORDER #:			SERVICE ORDER #:		
PROGRAM VERSION:		10C0-306	PROGRAM VERSION:		
FLUID LEVEL:			FLUID LEVEL:		
LOGGED INTERVAL	START	STOP	LOGGED INTERVAL	START	STOP

EQUIPMENT DESCRIPTION

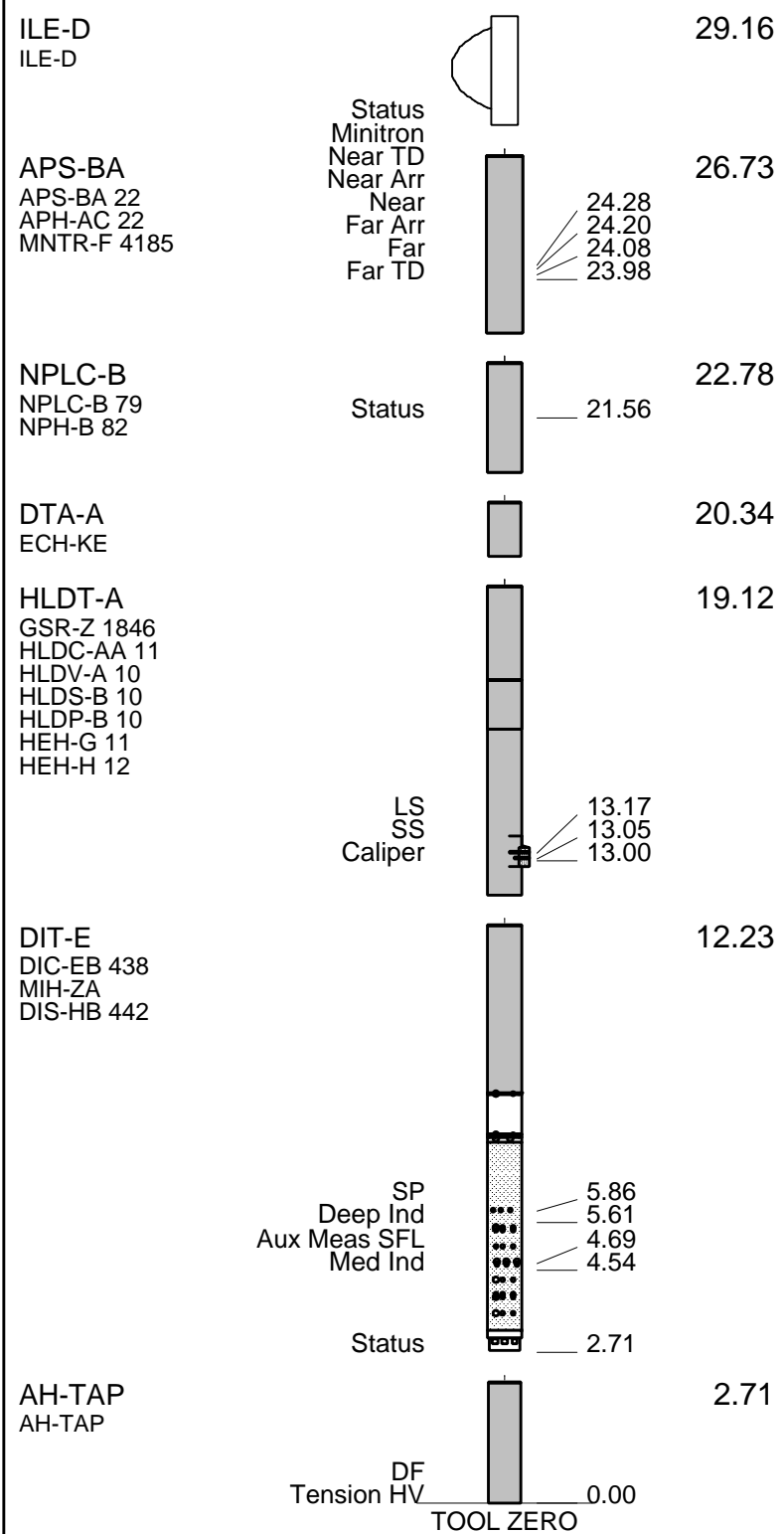
RUN 1	RUN 2
SURFACE EQUIPMENT SFT-281 24 SFT-178 4722 GSR-U 135 WITM (DTS)-A	

DOWNHOLE EQUIPMENT	
LEH-QT	33.47
LEH-QT	
DTC-H	32.58
ECH-KC	
HNGS-BA	31.66
HNGS-BA 77	

CTEM
TelStatus
ToolStatu

Upper_1
Lower_2

HNSH-BA 79



Input DLIS Files

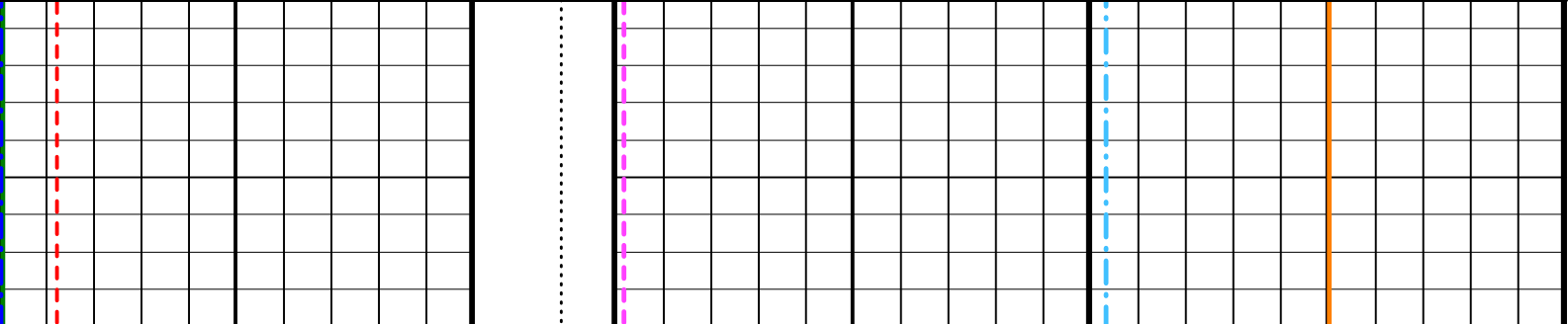
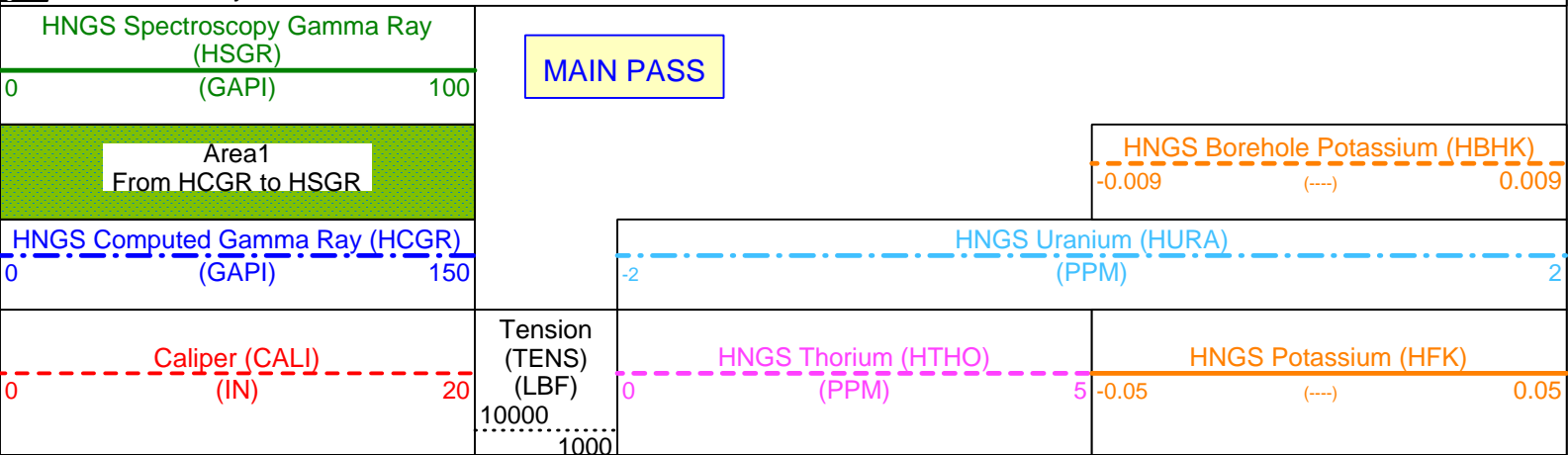
DEFAULT
 PI_LDL_APS_NGS_031PUP
 FN:36
 PRODUCER
 08-Oct-2002 12:53
 16140.0 FT
 14108.0 FT

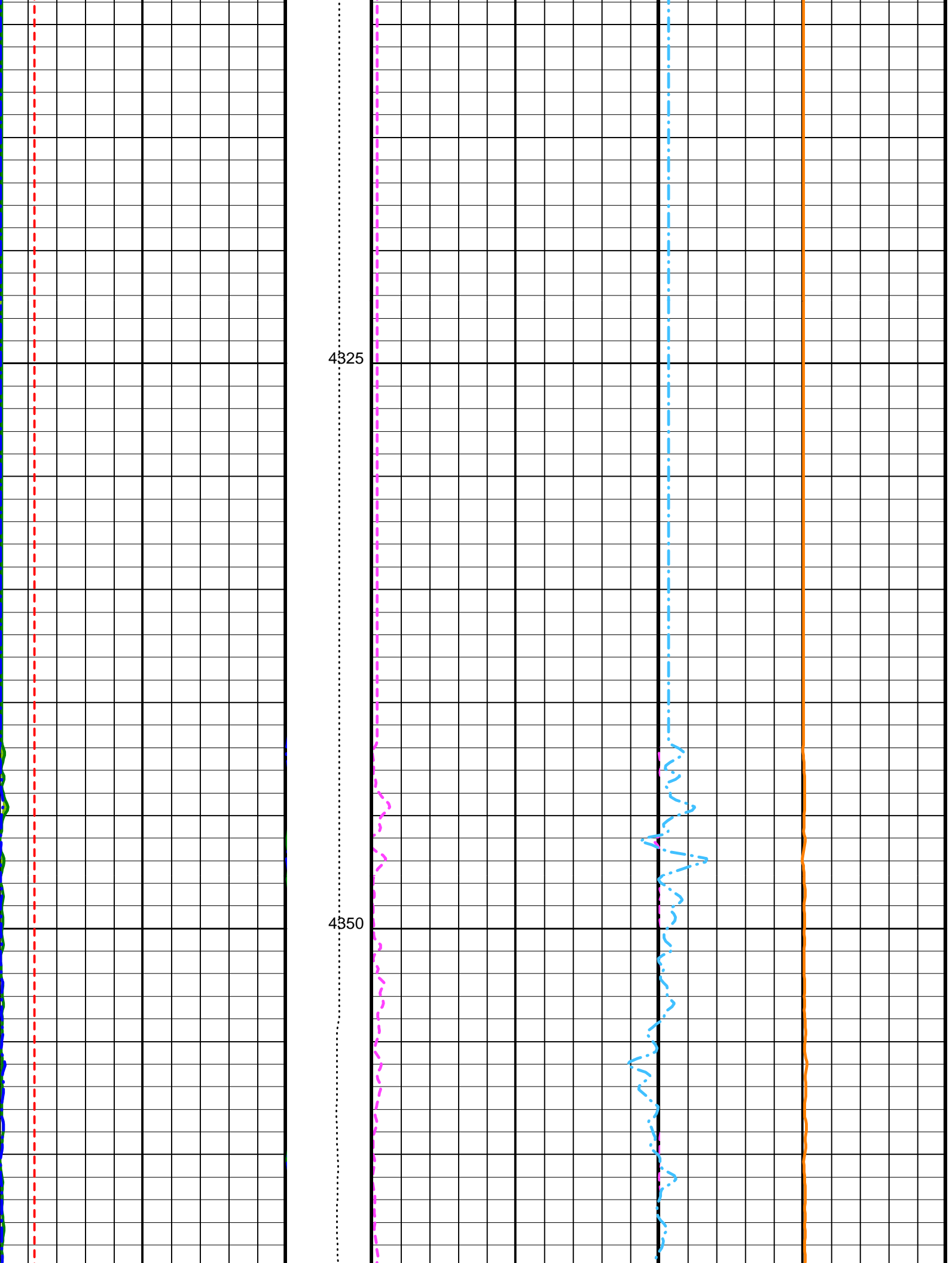
OP System Version: 10C0-306 MCM

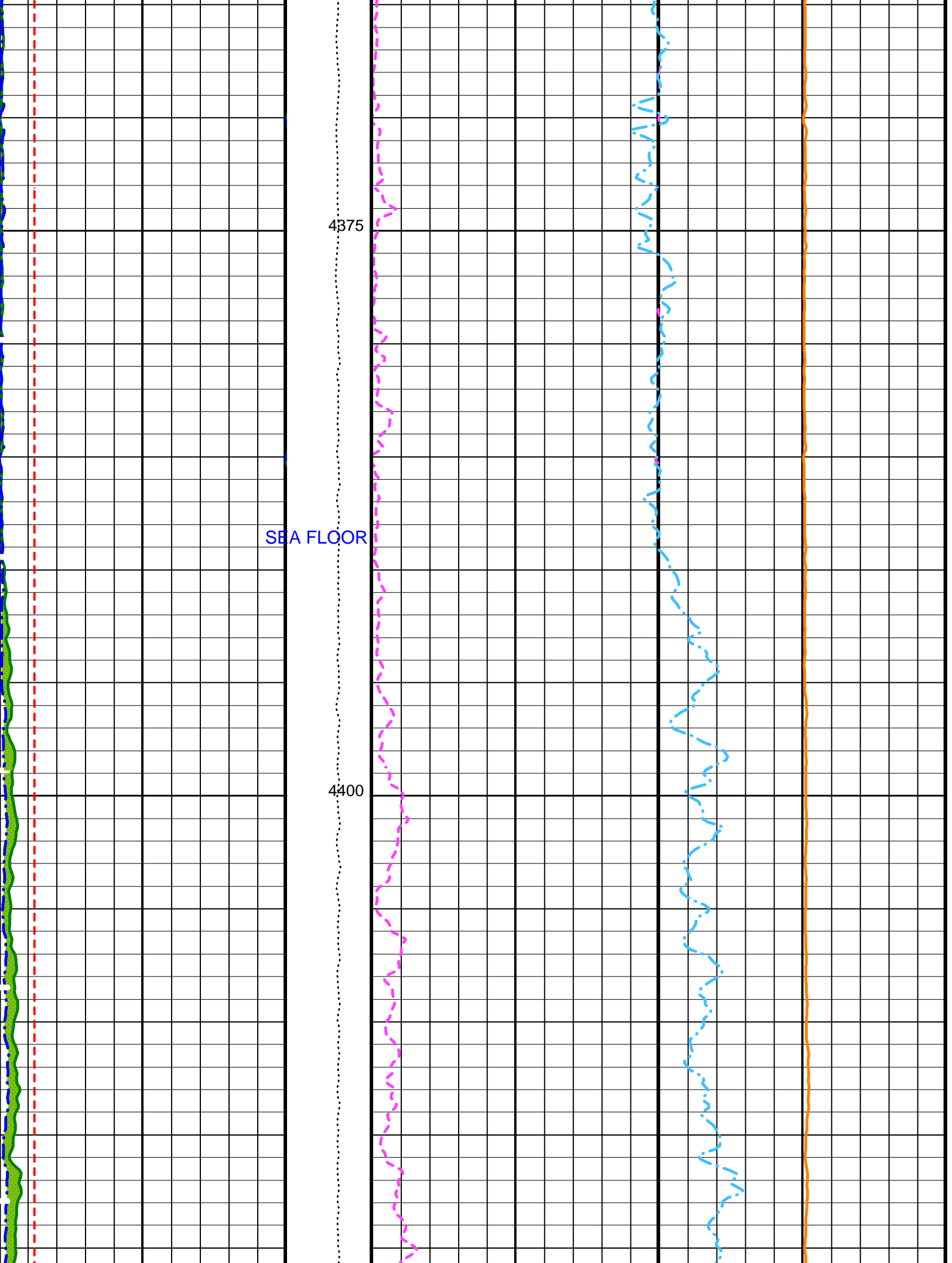
DITE	10C0-306	HLDTA	10C0-306
DTAA	10C0-306	NPLC-BA	OP10-KP1
APS-BA	OP10-KP1	HNGS-BA	OP10-KP1
DTCH	10C0-306		

PIP SUMMARY

Time Mark Every 60 S



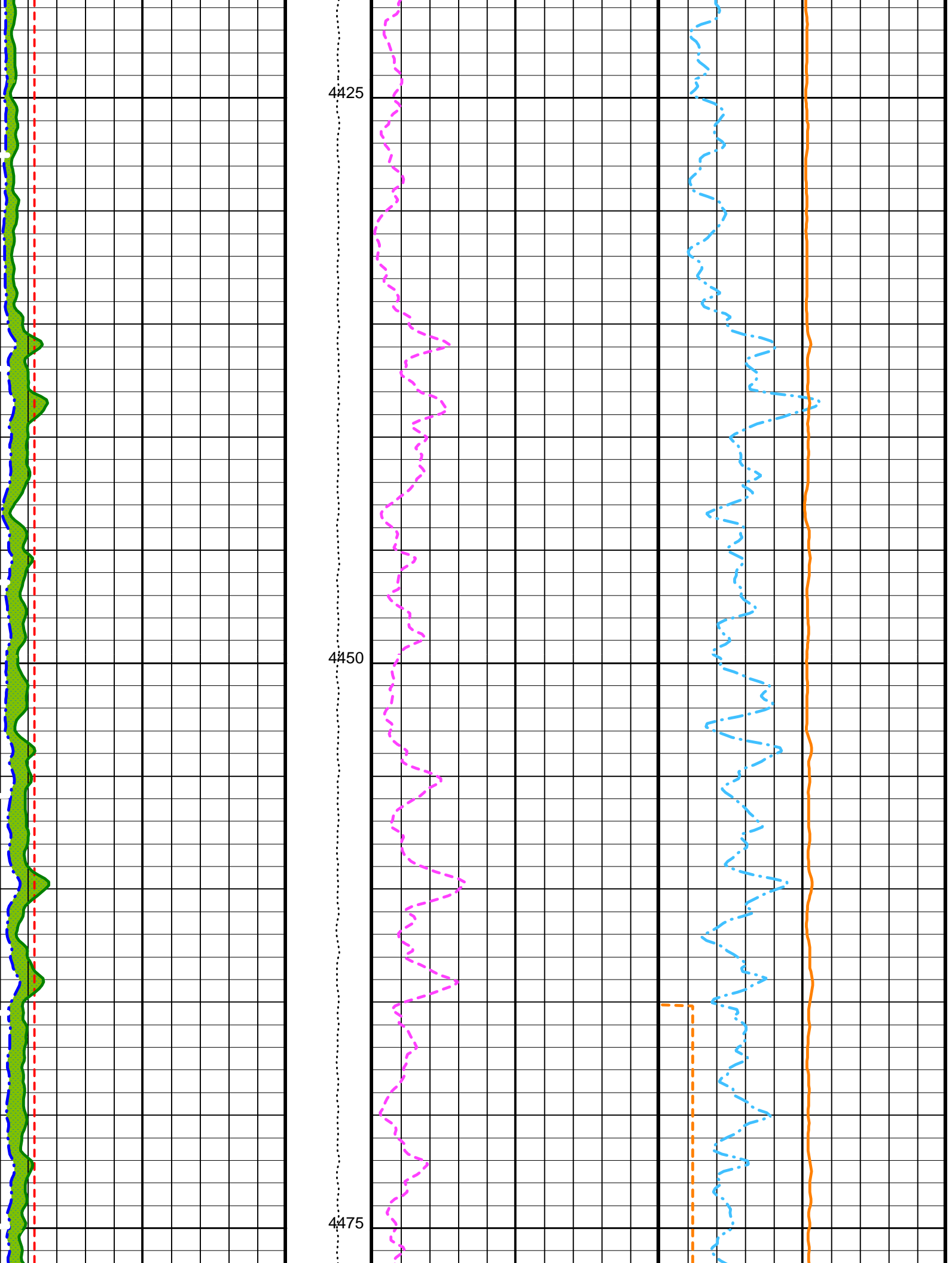


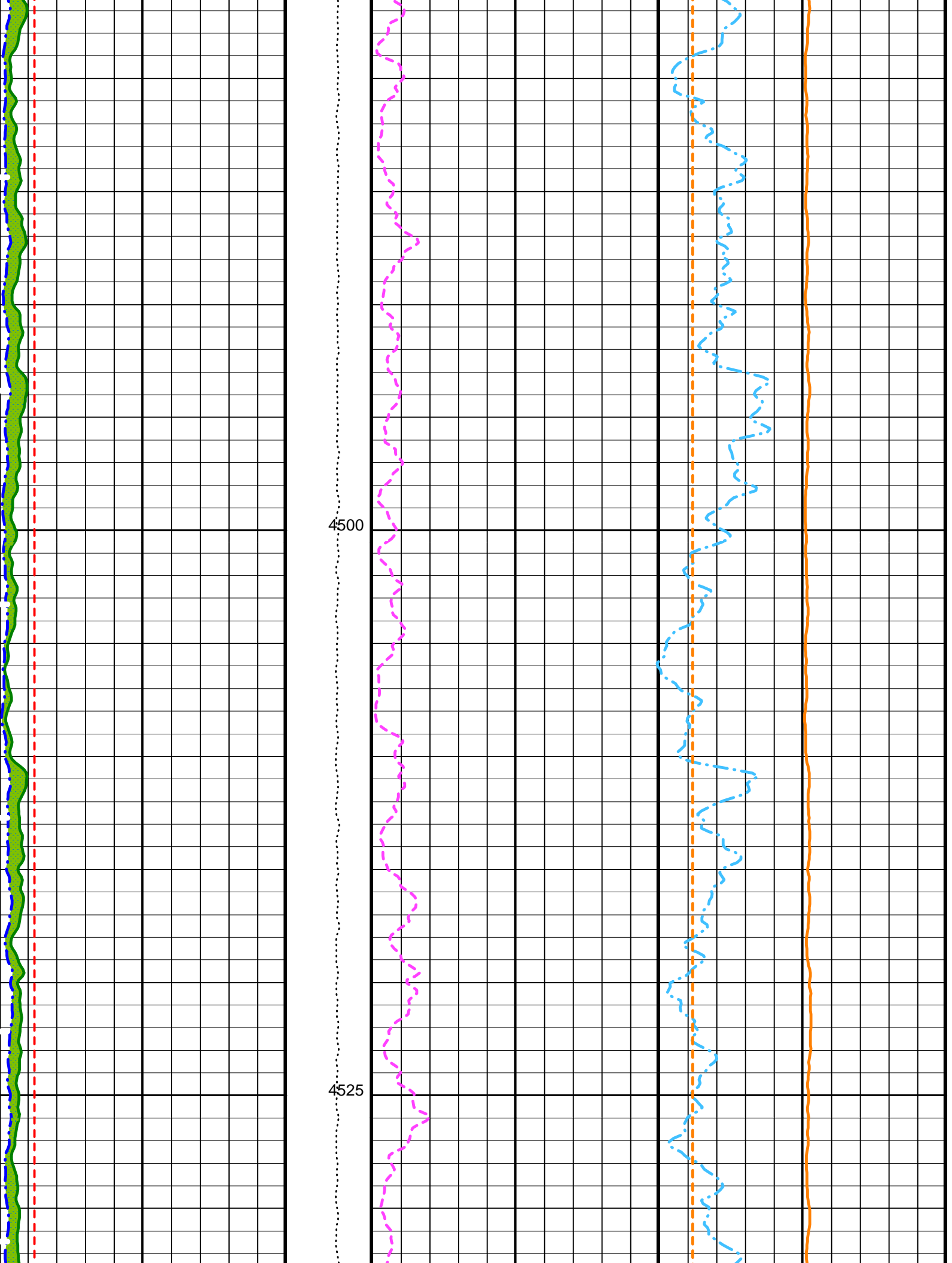


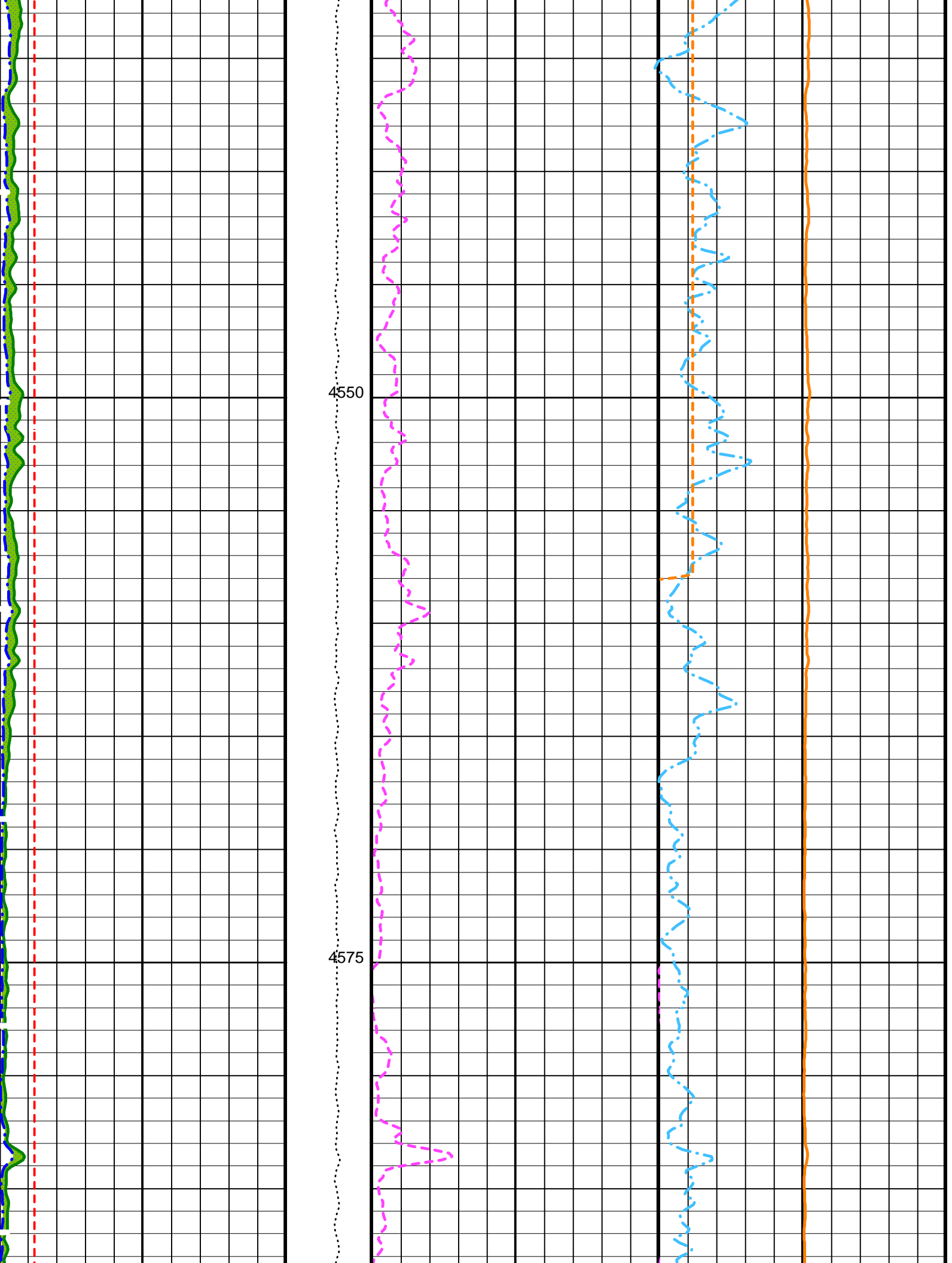
4375

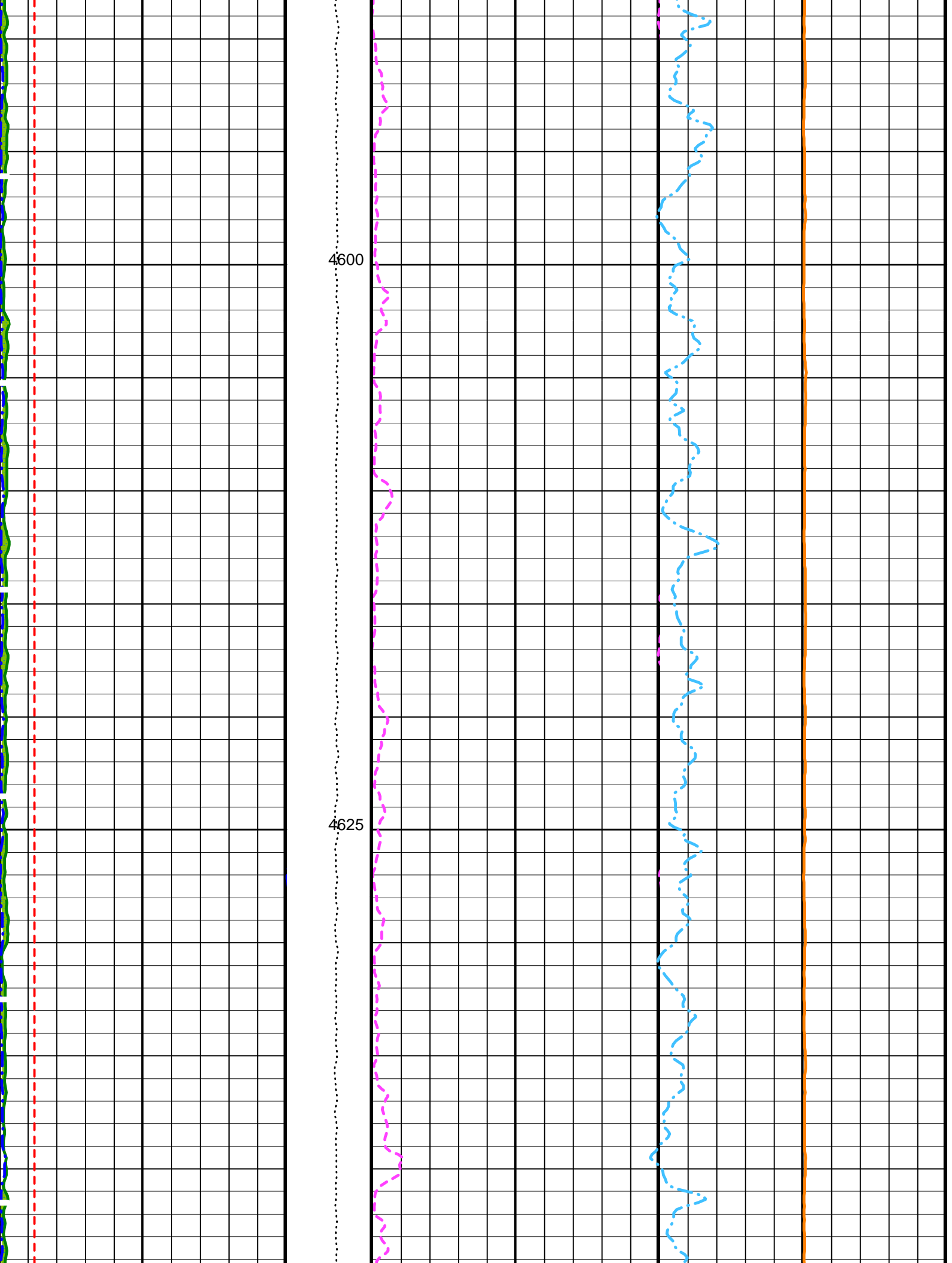
SEA FLOOR

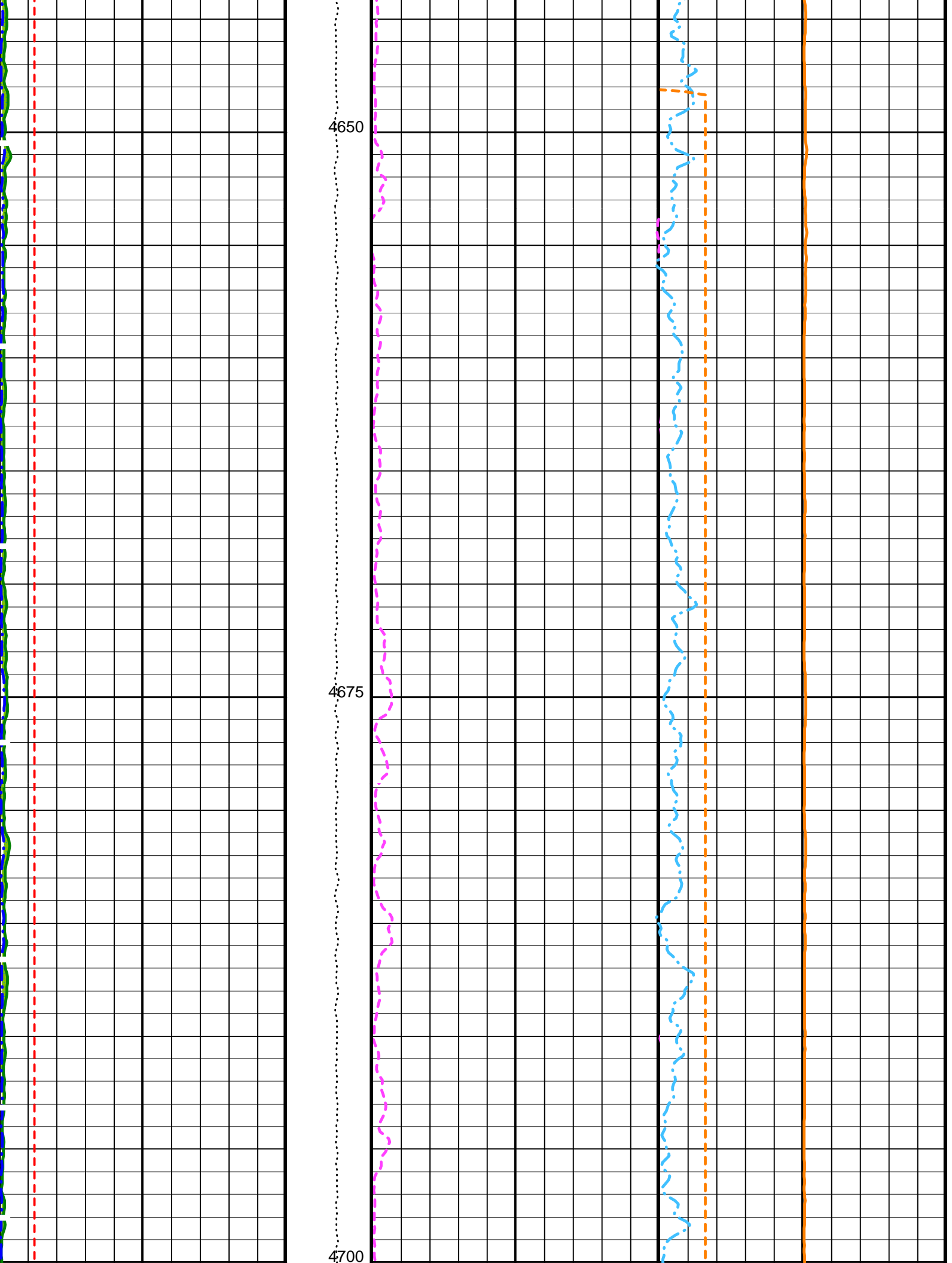
4400



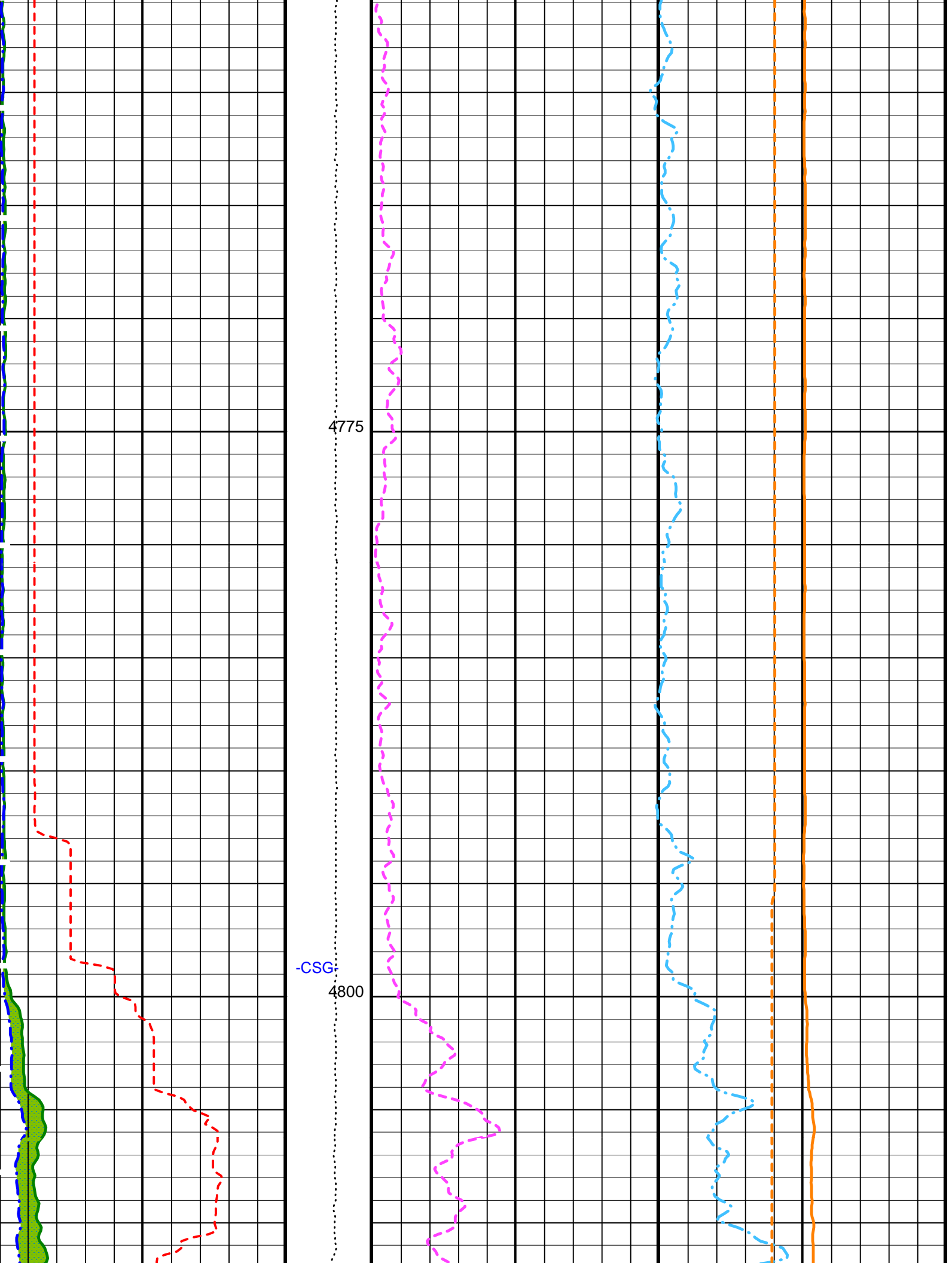


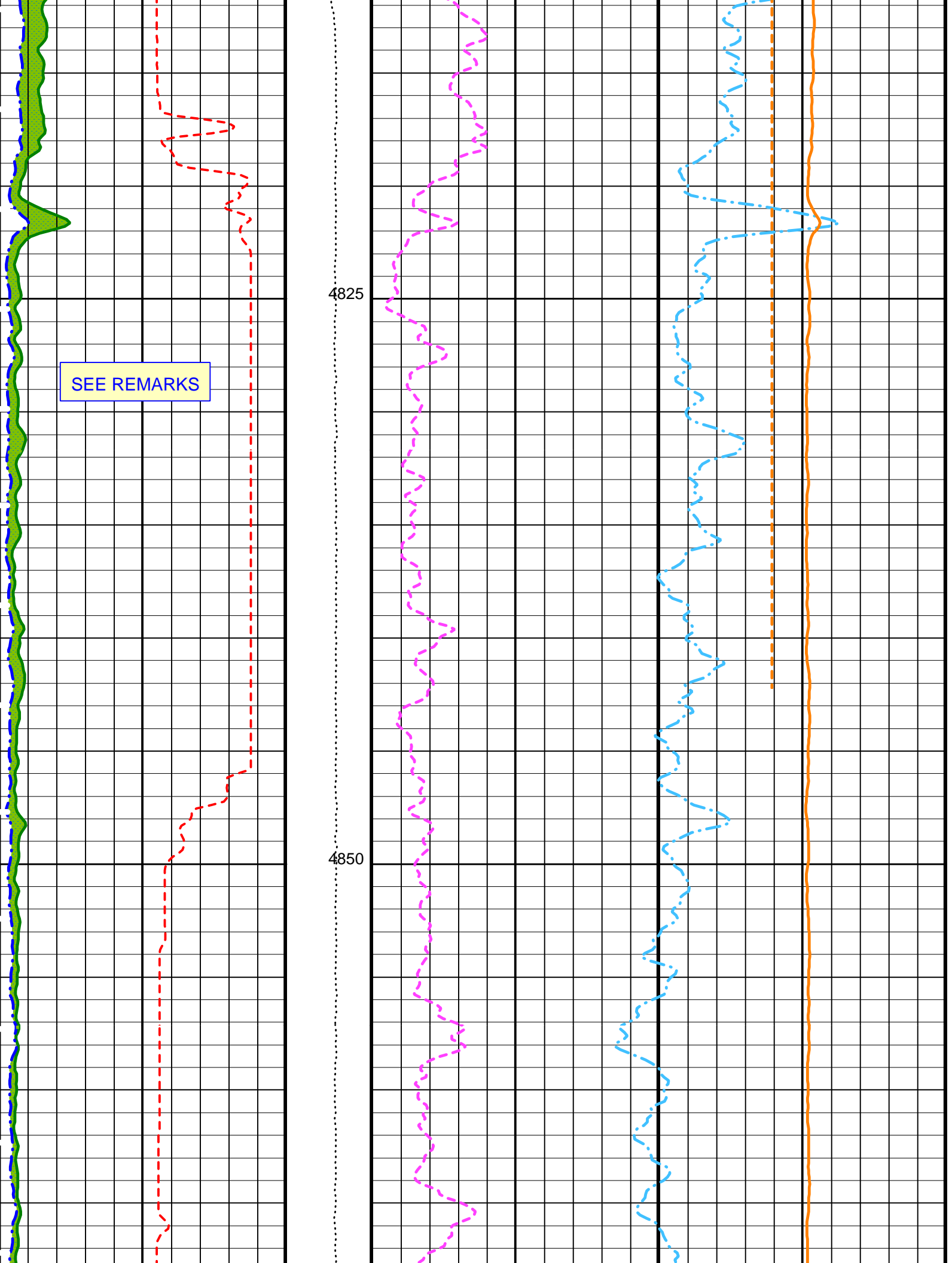








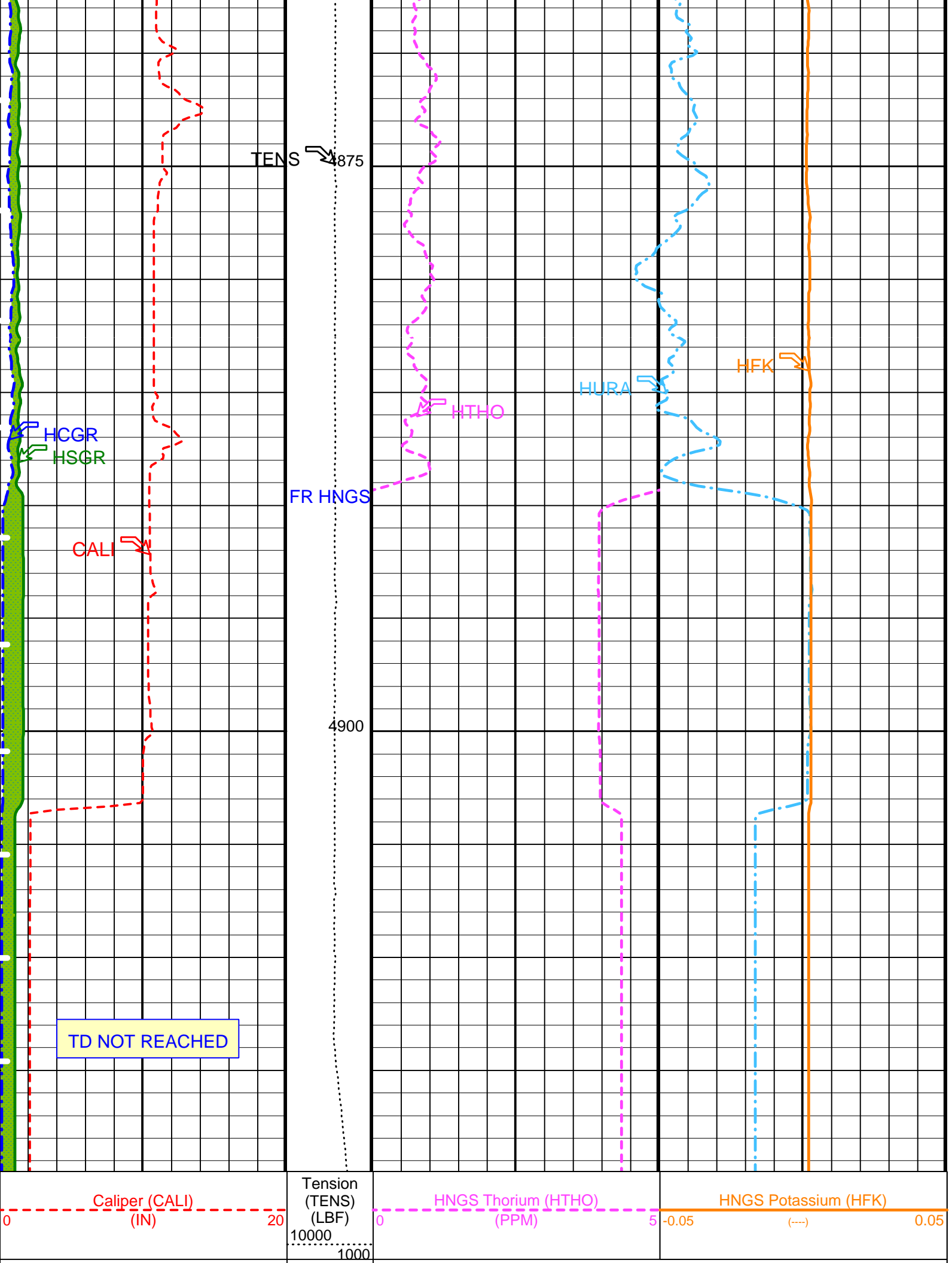




SEE REMARKS

4825

4850



HNGS Computed Gamma Ray (HCGR)
 0 (GAPI) 150
 Area1
 From HCGR to HSGR
 HNGS Spectroscopy Gamma Ray (HSGR)
 0 (GAPI) 100

HNGS Uranium (HURA)
 -2 (PPM) 2
 HNGS Borehole Potassium (HBHK)
 -0.009 (---) 0.009

PIP SUMMARY

Time Mark Every 60 S

Parameters

DLIS Name	Description	Value
DIT-E: Dual Induction - E		
BHS	Borehole Status	OPEN
GCSE	Generalized Caliper Selection	CALI
APS-BA: Accelerator-Porosity Tool		
BHS	Borehole Status	OPEN
GCSE	Generalized Caliper Selection	CALI
HNGS-BA: Hostile Natural Gamma Ray Sonde		
BAR1	HNGS Detector 1 Barite Constant	1.000
BAR2	HNGS Detector 2 Barite Constant	1.000
BHK	HNGS Borehole Potassium Correction Concentration	0.000
BHS	Borehole Status	OPEN
CSD1	Inner Casing Outer Diameter	0.000 in
CSD2	Outer Casing Outer Diameter	0.000 in
CSW1	Inner Casing Weight	0.000 lbm/ft
CSW2	Outer Casing Weight	0.000 lbm/ft
DBCC	HNGS Barite Constant Correction Flag	NONE
GCSE	Generalized Caliper Selection	CALI
H1P	HNGS Detector 1 Allow/Disallow In Processing	ALLOW
H2P	HNGS Detector 2 Allow/Disallow In Processing	ALLOW
HABK	HNGS Borehole Potassium Running Average	-0.024
HALF	HNGS Alpha Filter Length	60.000 in
HCRB	HNGS Apply Borehole Potassium Correction	NONE
HMWM	Mud Weighting Material	NATU
HNPE	HNGS Processing Enable	YES
S1BI	HNGS Detector 1 Calibration Bismuth Count Rate	1.300 1/s
S2BI	HNGS Detector 2 Calibration Bismuth Count Rate	1.300 1/s
SGRC	HNGS Standard Gamma-Ray Correction Flag	YES
TPOS	Tool Position	ECCE
VBA1	HNGS Detector 1 Variable Barite Factor Running Average	0.954
VBA2	HNGS Detector 2 Variable Barite Factor Running Average	1.043
System and Miscellaneous		
BS	Bit Size	9.875 in
DFD	Drilling Fluid Density	1.100 g/cm3

Format: HNGSYields Vertical Scale: 1:200 Graphics File Created: 26-Oct-2002 07:06

OP System Version: 10C0-306
MCM

DITE	10C0-306	HLDTA	10C0-306
DTAA	10C0-306	NPLC-BA	OP10-KP1
APS-BA	OP10-KP1	HNGS-BA	OP10-KP1
DTCH	10C0-306		

Input DLIS Files

DEFAULT	PI_LDL_APS_NGS_031PUP	FN:36	PRODUCER	08-Oct-2002 12:53	16140.0 FT	14108.0 FT
---------	-----------------------	-------	----------	-------------------	------------	------------

Company: Lamont Doherty Earth Observatory



Well: ODP Leg 205, Site 1253A
 Field: Costa Rica
 Country: Costa Rica
 Ocean: Pacific

Hostile Natural Gamma Ray

Procedimento para a instalação da sonda

Sonda