



**DISCLAIMER**

THE USE OF AND RELIANCE UPON THIS RECORDED-DATA BY THE HEREIN NAMED COMPANY (AND ANY OF ITS AFFILIATES, PARTNERS, REPRESENTATIVES, AGENTS, CONSULTANTS AND EMPLOYEES) IS SUBJECT TO THE TERMS AND CONDITIONS AGREED UPON BETWEEN SCHLUMBERGER AND THE COMPANY, INCLUDING: (a) RESTRICTIONS ON USE OF THE RECORDED-DATA; (b) DISCLAIMERS AND WAIVERS OF WARRANTIES AND REPRESENTATIONS REGARDING COMPANY'S USE OF AND RELIANCE UPON THE RECORDED-DATA; AND (c) CUSTOMER'S FULL AND SOLE RESPONSIBILITY FOR ANY INFERENCE DRAWN OR DECISION MADE IN CONNECTION WITH THE USE OF THIS RECORDED-DATA.

OTHER SERVICES1 OS1: OS2: OS3: OS4: OS5:	OTHER SERVICES2 OS1: OS2: OS3: OS4: OS5:
---	---

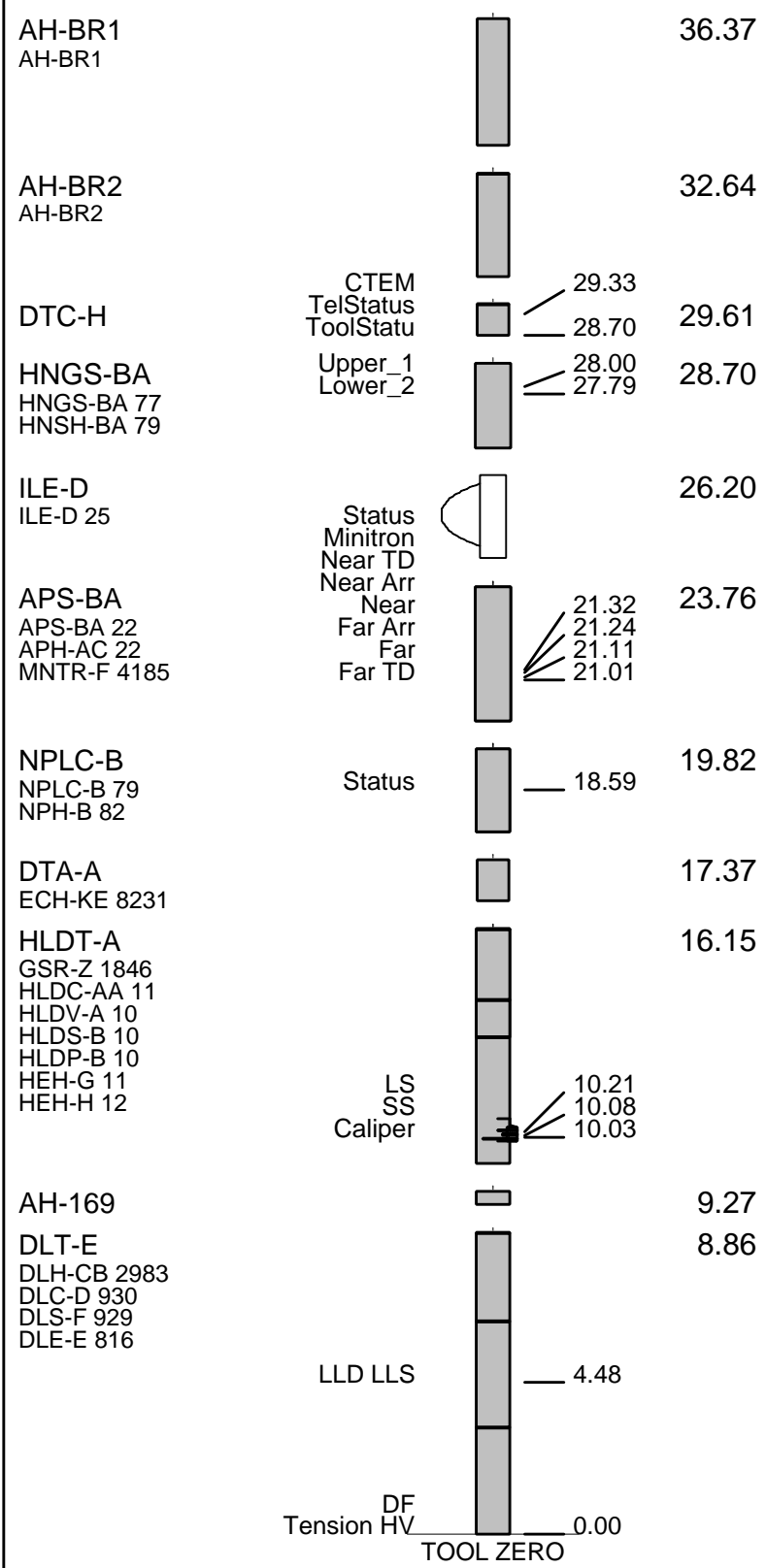
REMARKS: RUN NUMBER 1 Hole cored with RCB All depths in Meters Below Rig Floor (MBRF). Sepiolite mud was used. WHC was run. Sea Floor- 3645.4 MBRF Total Depth Driller-3985.7 MBRF. Total Depth Logger-3956 MBRF. Drill Pipe Driller- 3757.4 MBRF. Drill Pipe Logger Run #1- 3753 Drill Pipe Logger Run #2- 3951 MBRF. Sea Floor Logger- Unable to pick.	REMARKS: RUN NUMBER 2
---	-----------------------

RUN 1			RUN 2		
SERVICE ORDER #:			SERVICE ORDER #:		
PROGRAM VERSION:		10C0-306	PROGRAM VERSION:		
FLUID LEVEL:			FLUID LEVEL:		
LOGGED INTERVAL	START	STOP	LOGGED INTERVAL	START	STOP

**EQUIPMENT DESCRIPTION**

RUN 1		RUN 2	
<b>SURFACE EQUIPMENT</b> LCM-AA 909 SFT-281 24 SFT-178 4722 GSR-U 135 WITM (DTS)-A			

<b>DOWNHOLE EQUIPMENT</b>	
BSP BRT-S	61.64
SP SPARC	40.59
LEH-QT	37.26



MAXIMUM STRING DIAMETER 3.88 IN  
 MEASUREMENTS RELATIVE TO TOOL ZERO  
 ALL LENGTHS IN METERS

### Output DLIS Files

DEFAULT	DLL_LDL_APS_NGS_036LUP	FN:40	PRODUCER	22-Nov-2002 03:36	3847.3 M	3617.5 M
DLL_CUST	DLL_LDL_APS_NGS_036LUP	FN:41	PRODUCER	22-Nov-2002 03:36	3847.3 M	3617.5 M

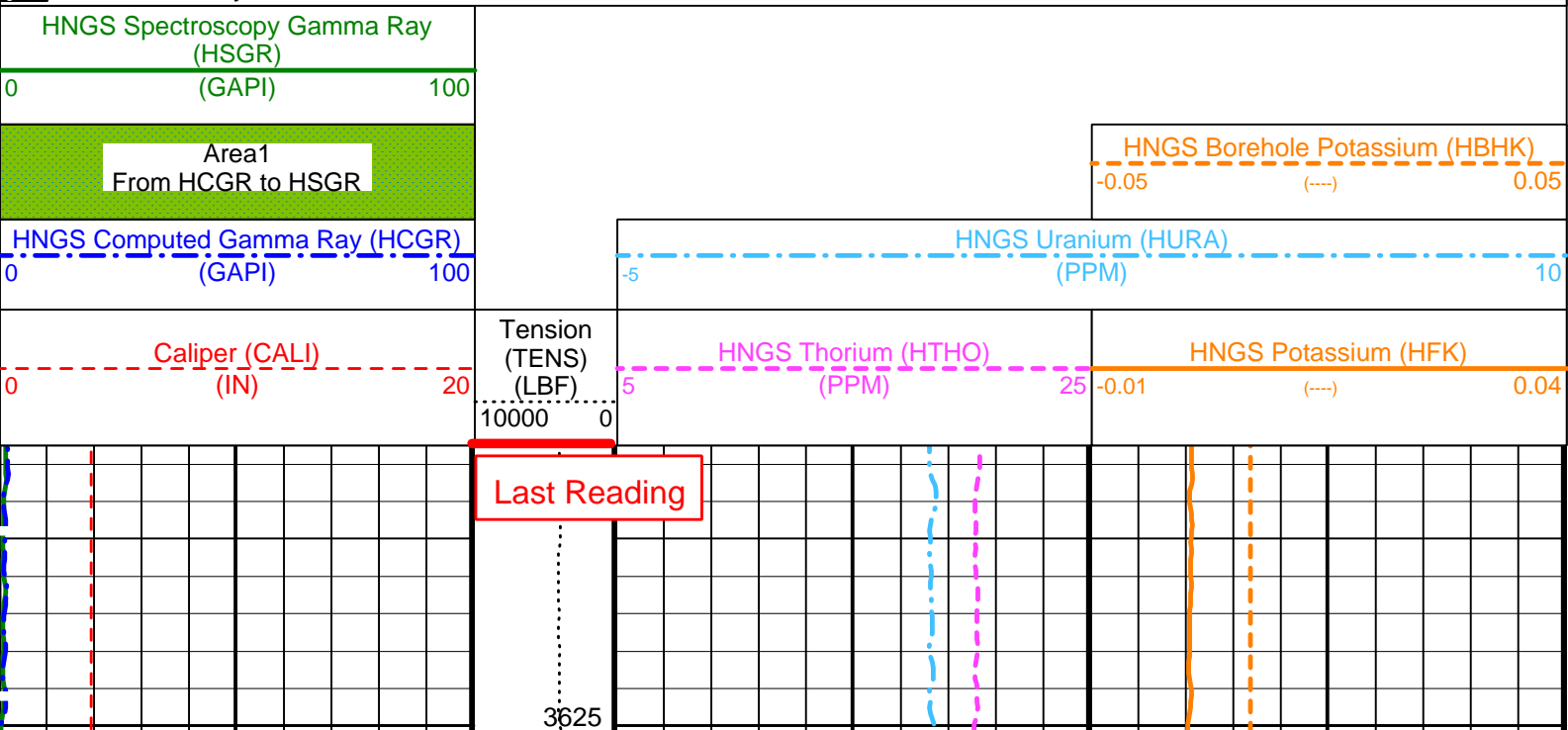
OP System Version: 10C0-306  
MCM

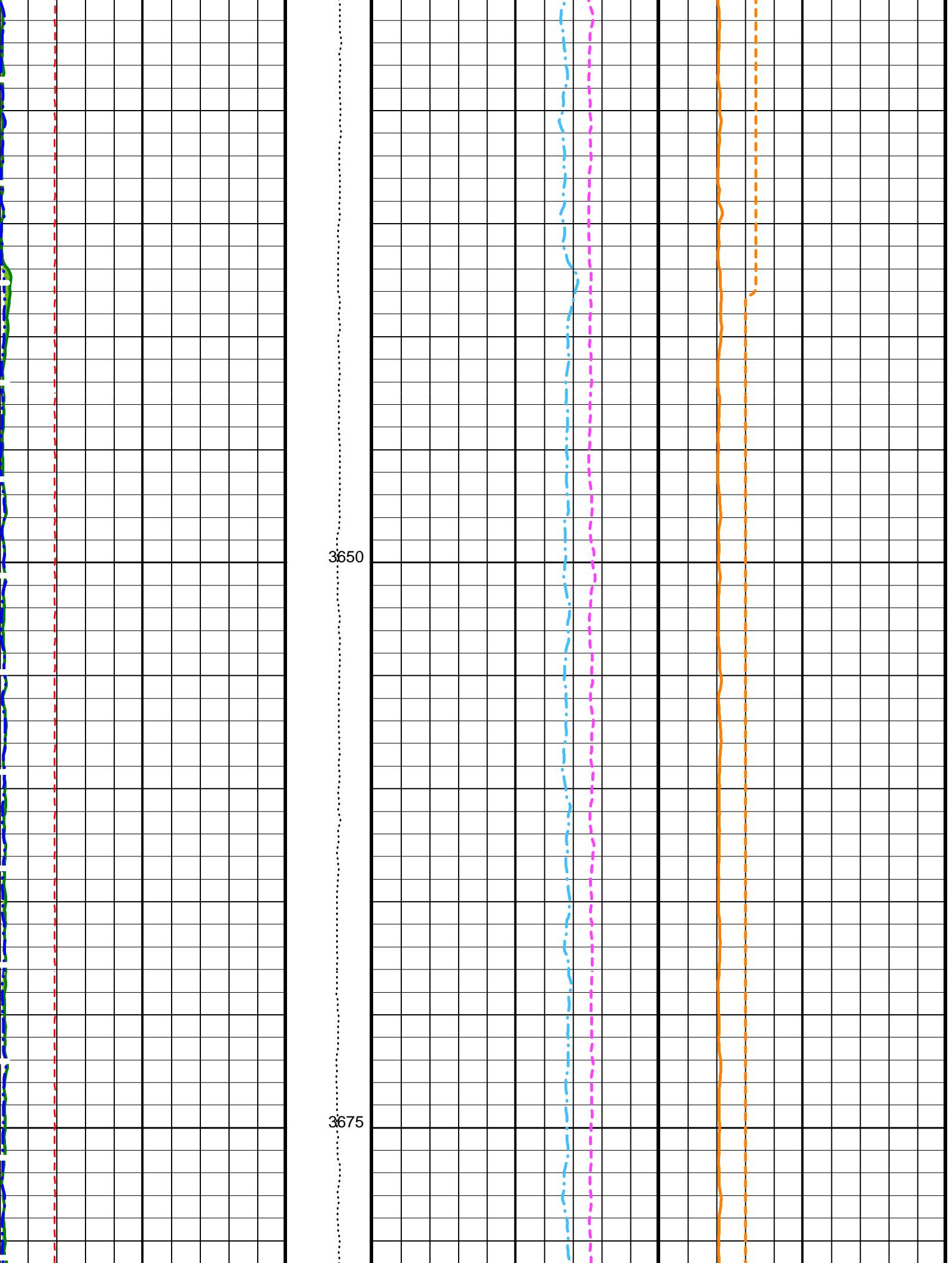
**MAIN UP LOG**

DLT-E	10C0-306	HLDT-A	10C0-306
DTA-A	10C0-306	NPLC-B	OP10-KP1
APS-BA	OP10-KP1	HNGS-BA	OP10-KP1
DTC-H	10C0-306	BSP	10C0-306

### PIP SUMMARY

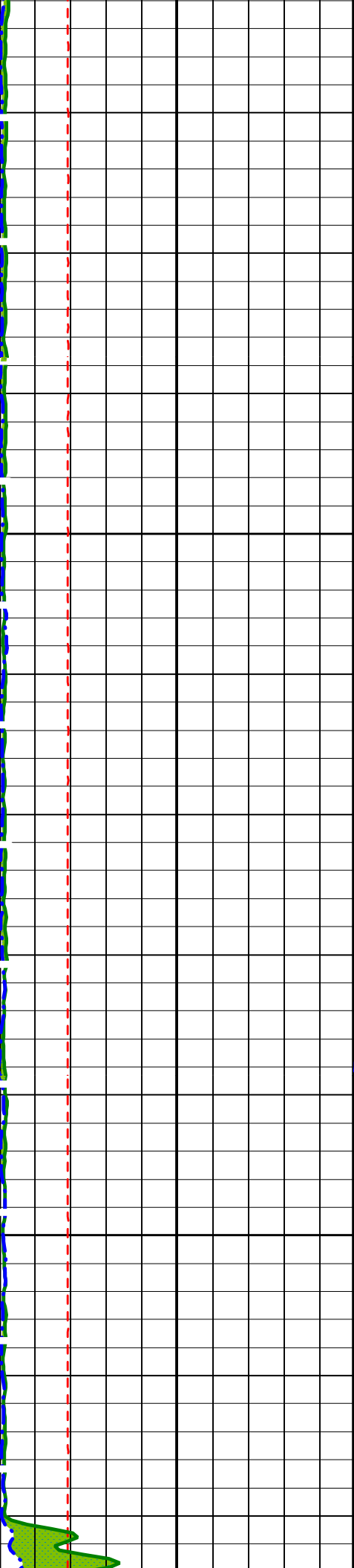
Time Mark Every 60 S





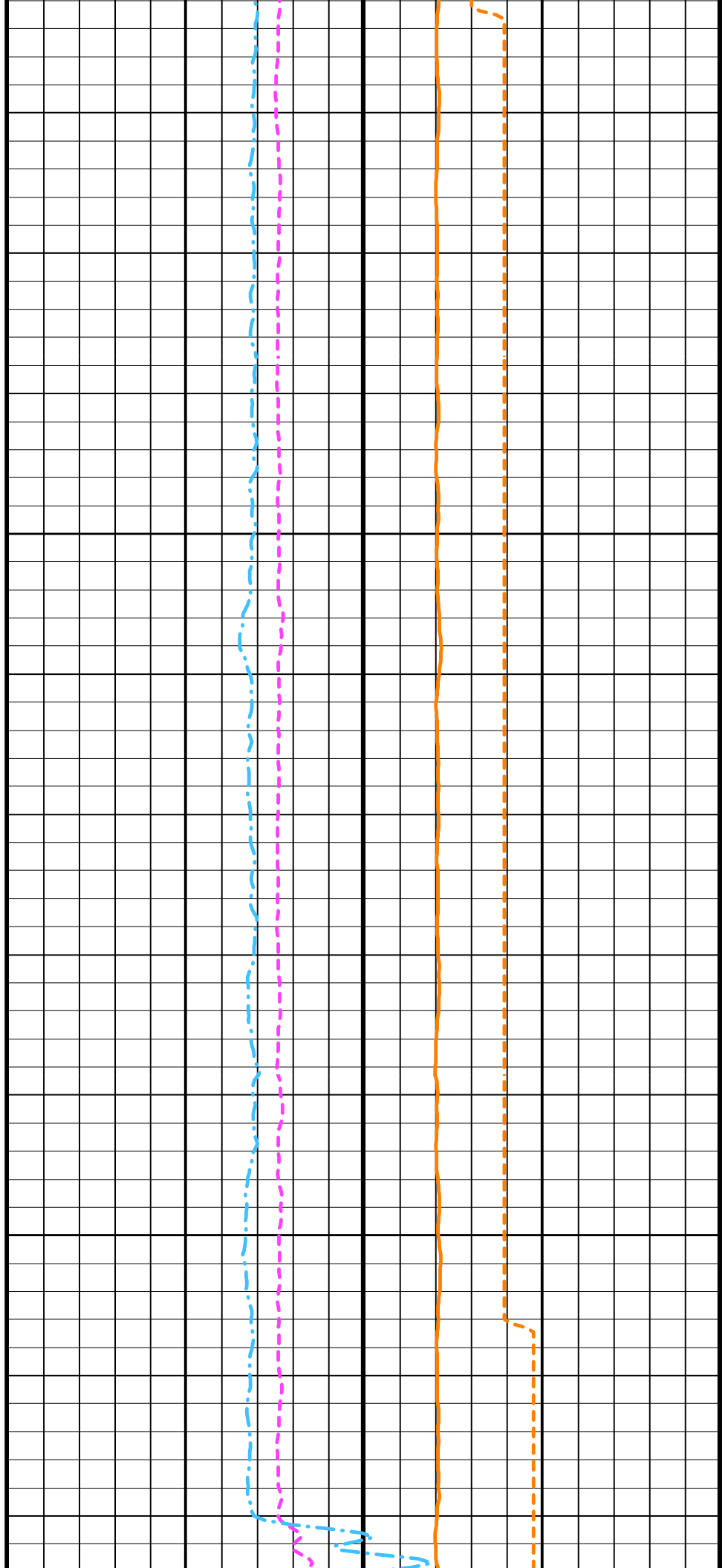
3650

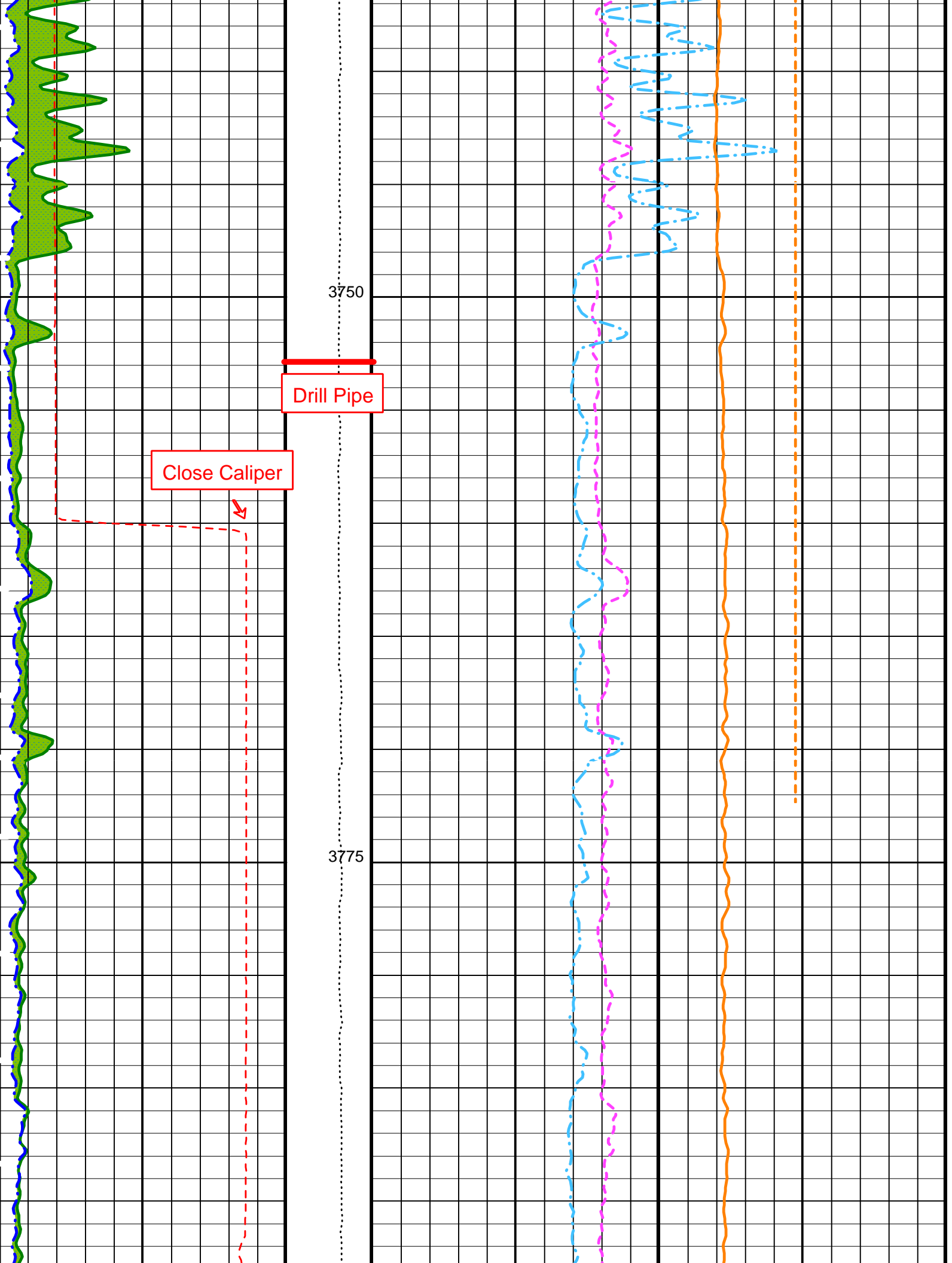
3675

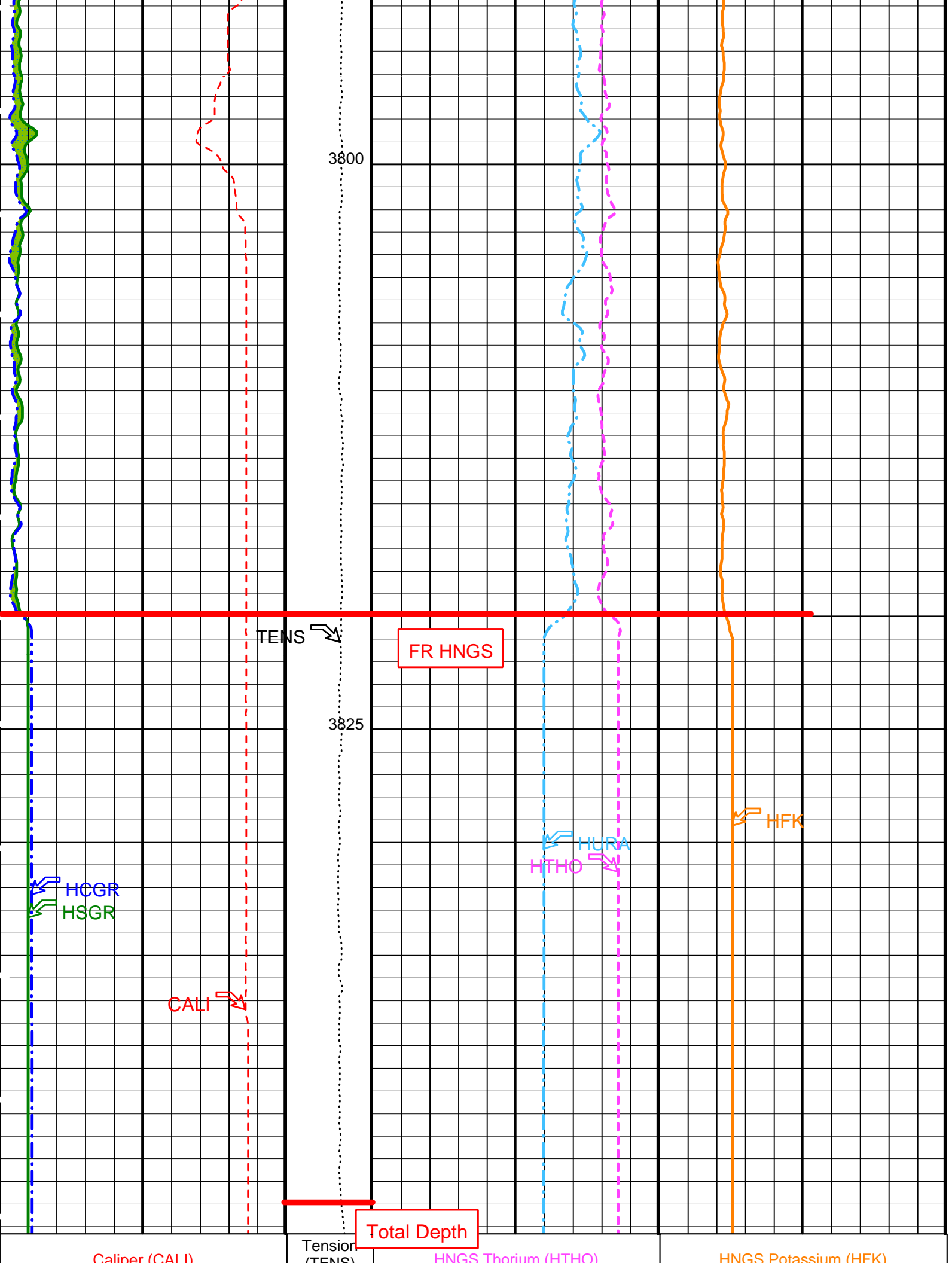


3700

3725







3800

3825

TENS

FR HNGS

HFK

HURA  
HTHO

HCGR  
HSGR

CALI

Total Depth

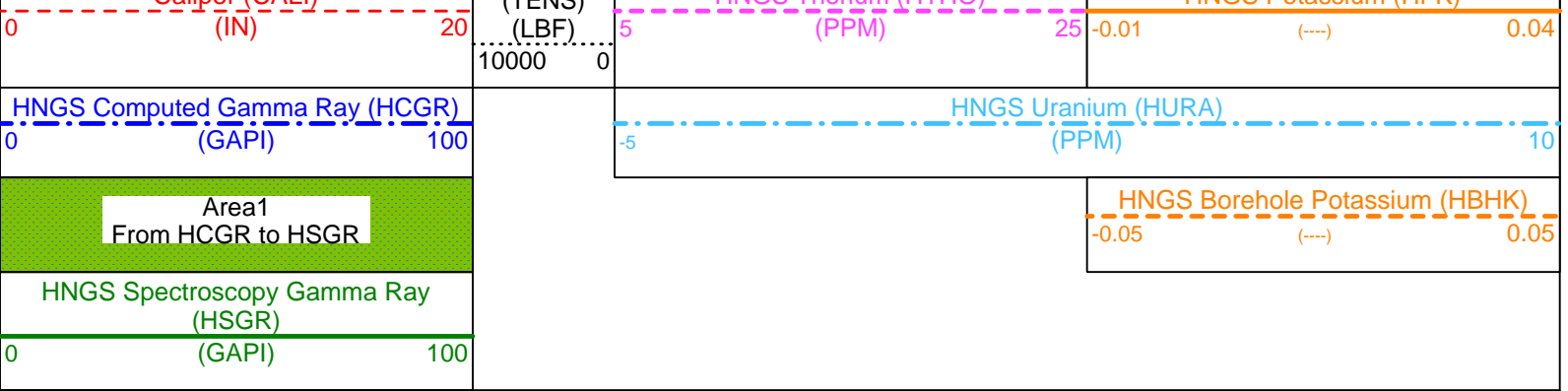
Caliner (CALI)

Tension (TENS)

HNGS Thorium (HTHO)

HNGS Potassium (HFK)





PIP SUMMARY

Time Mark Every 60 S

Parameters

DLIS Name	Description	Value
APS-BA:	Accelerator-Porosity Tool	
BHS	Borehole Status	OPEN
GCSE	Generalized Caliper Selection	CALI
HNGS-BA:	Hostile Natural Gamma Ray Sonde	
BAR1	HNGS Detector 1 Barite Constant	1
BAR2	HNGS Detector 2 Barite Constant	1
BHK	HNGS Borehole Potassium Correction Concentration	0
BHS	Borehole Status	OPEN
CSD1	Inner Casing Outer Diameter	0 IN
CSD2	Outer Casing Outer Diameter	0 IN
CSW1	Inner Casing Weight	0 LB/F
CSW2	Outer Casing Weight	0 LB/F
DBCC	HNGS Barite Constant Correction Flag	NONE
GCSE	Generalized Caliper Selection	CALI
H1P	HNGS Detector 1 Allow/Disallow In Processing	ALLOW
H2P	HNGS Detector 2 Allow/Disallow In Processing	ALLOW
HALF	HNGS Borehole Potassium Running Average	-0.00223479
HALB	HNGS Alpha Filter Length	60 IN
HCRB	HNGS Apply Borehole Potassium Correction	NONE
HMWM	Mud Weighting Material	NATU
HNPE	HNGS Processing Enable	YES
S1BI	HNGS Detector 1 Calibration Bismuth Count Rate	1.3 CPS
S2BI	HNGS Detector 2 Calibration Bismuth Count Rate	1.3 CPS
SGRC	HNGS Standard Gamma-Ray Correction Flag	YES
TPOS	Tool Position	ECCE
VBA1	HNGS Detector 1 Variable Barite Factor Running Average	1.02936
VBA2	HNGS Detector 2 Variable Barite Factor Running Average	1.28817
System and Miscellaneous		
BS	Bit Size	9.875 IN
DFD	Drilling Fluid Density	1.07 G/C3

Format: HNGSYields Vertical Scale: 1:200 Graphics File Created: 22-Nov-2002 03:36

OP System Version: 10C0-306

MCM

DLT-E	10C0-306	HLDT-A	10C0-306
DTA-A	10C0-306	NPLC-B	OP10-KP1
APS-BA	OP10-KP1	HNGS-BA	OP10-KP1
DTC-H	10C0-306	BSP	10C0-306

Output DLIS Files

DEFAULT	DLL_LDL_APS_NGS_036LUP	FN:40	PRODUCER	22-Nov-2002 03:36
DLL_CUST	DLL_LDL_APS_NGS_036LUP	FN:41	PRODUCER	22-Nov-2002 03:36

Output DLIS Files

DEFAULT	DLL_LDL_APS_NGS_040LUP	FN:48	PRODUCER	22-Nov-2002 11:45	3961.6 M	3802.3 M
DLL_CUST	DLL_LDL_APS_NGS_040LUP	FN:49	PRODUCER	22-Nov-2002 11:45	3961.6 M	3802.3 M

OP System Version: 10C0-306

MCM

Main Up Log

DLT-E 10C0-306  
DTA-A 10C0-306  
APS-BA OP10-KP1  
DTC-H 10C0-306

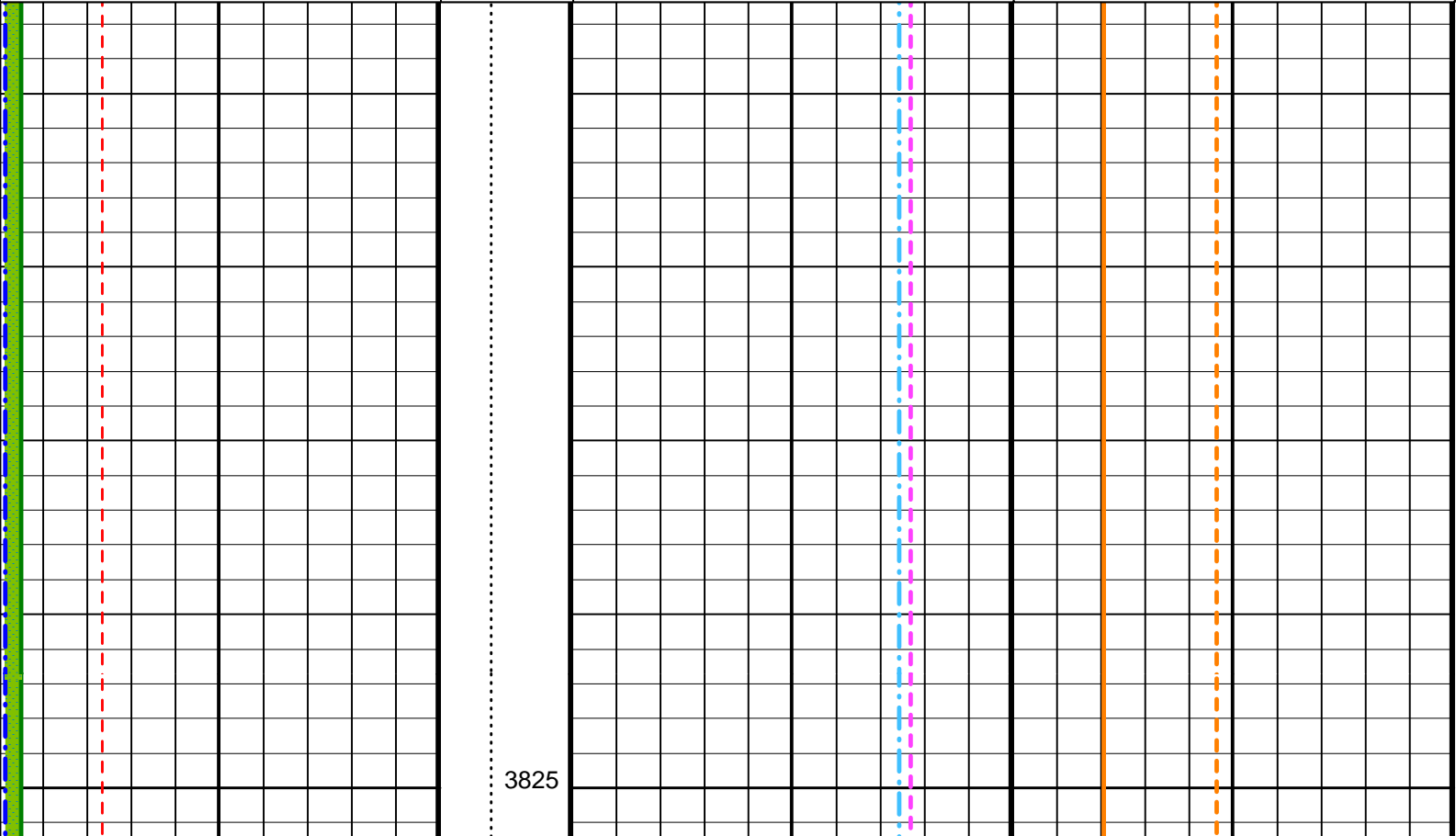
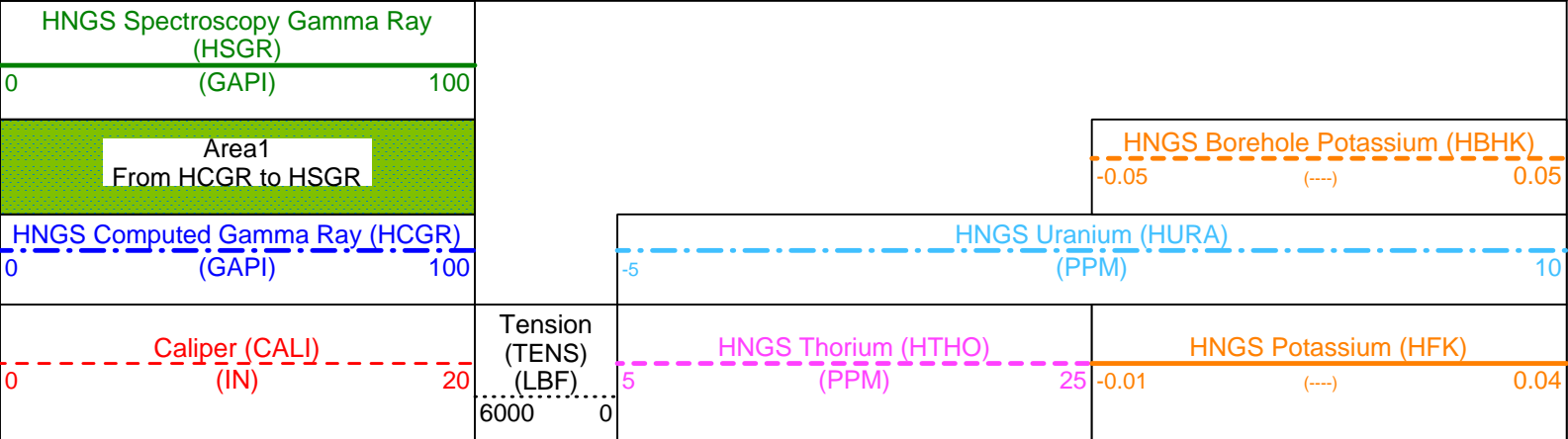
HLDT-A 10C0-306  
NPLC-B OP10-KP1  
HNGS-BA OP10-KP1  
BSP 10C0-306

### Changed Parameter Summary

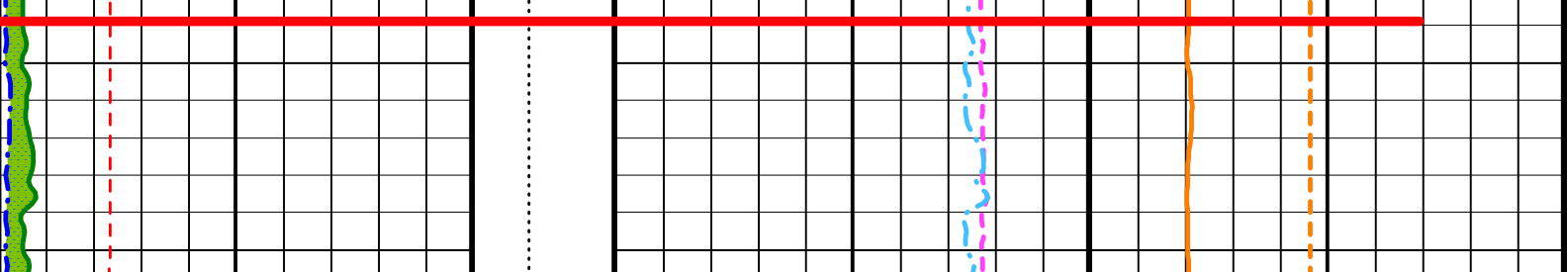
DLIS Name	New Value	Previous Value	Depth & Time
GCSE	BS	CALI	3869.5 12:12:10

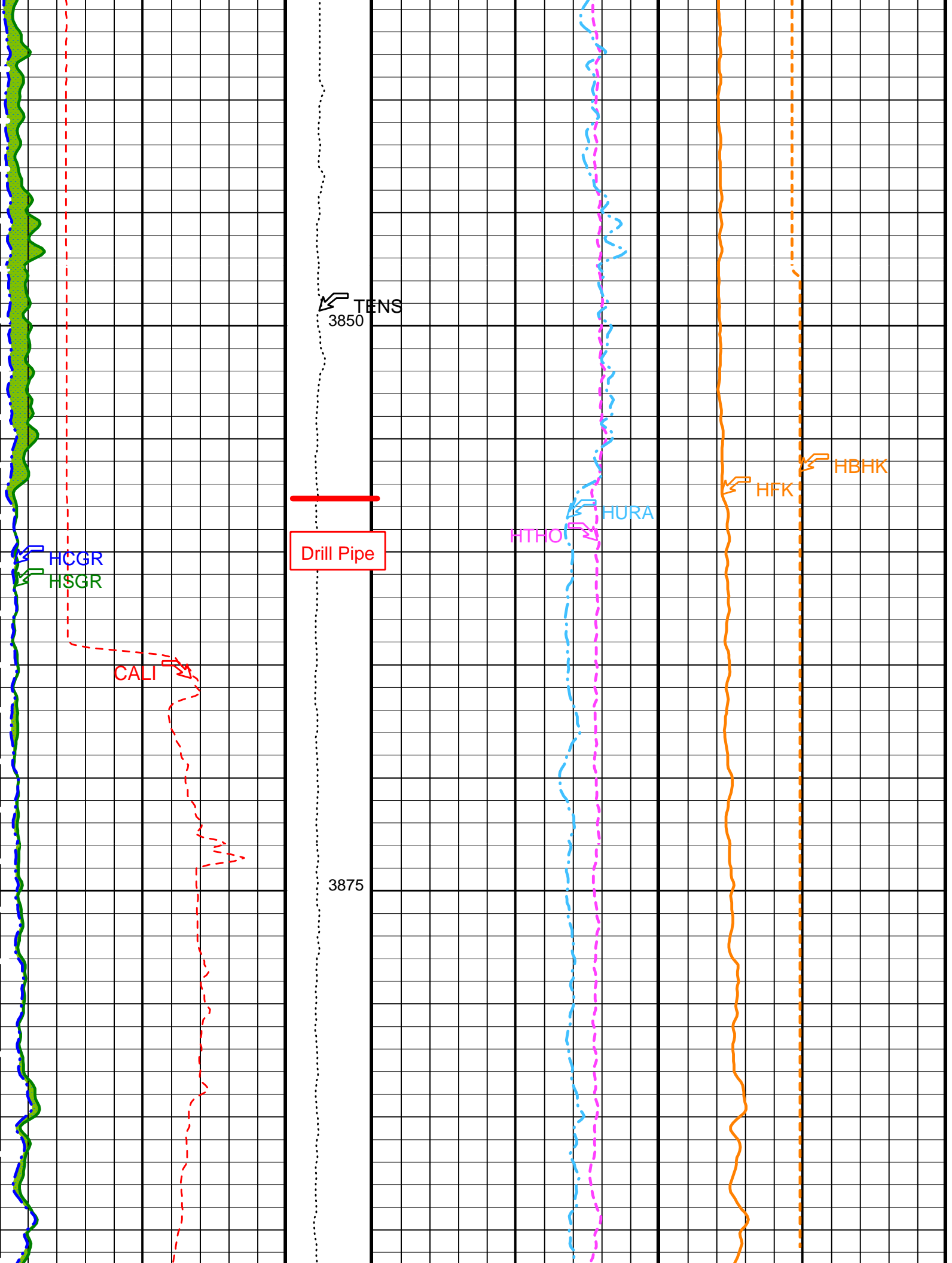
### PIP SUMMARY

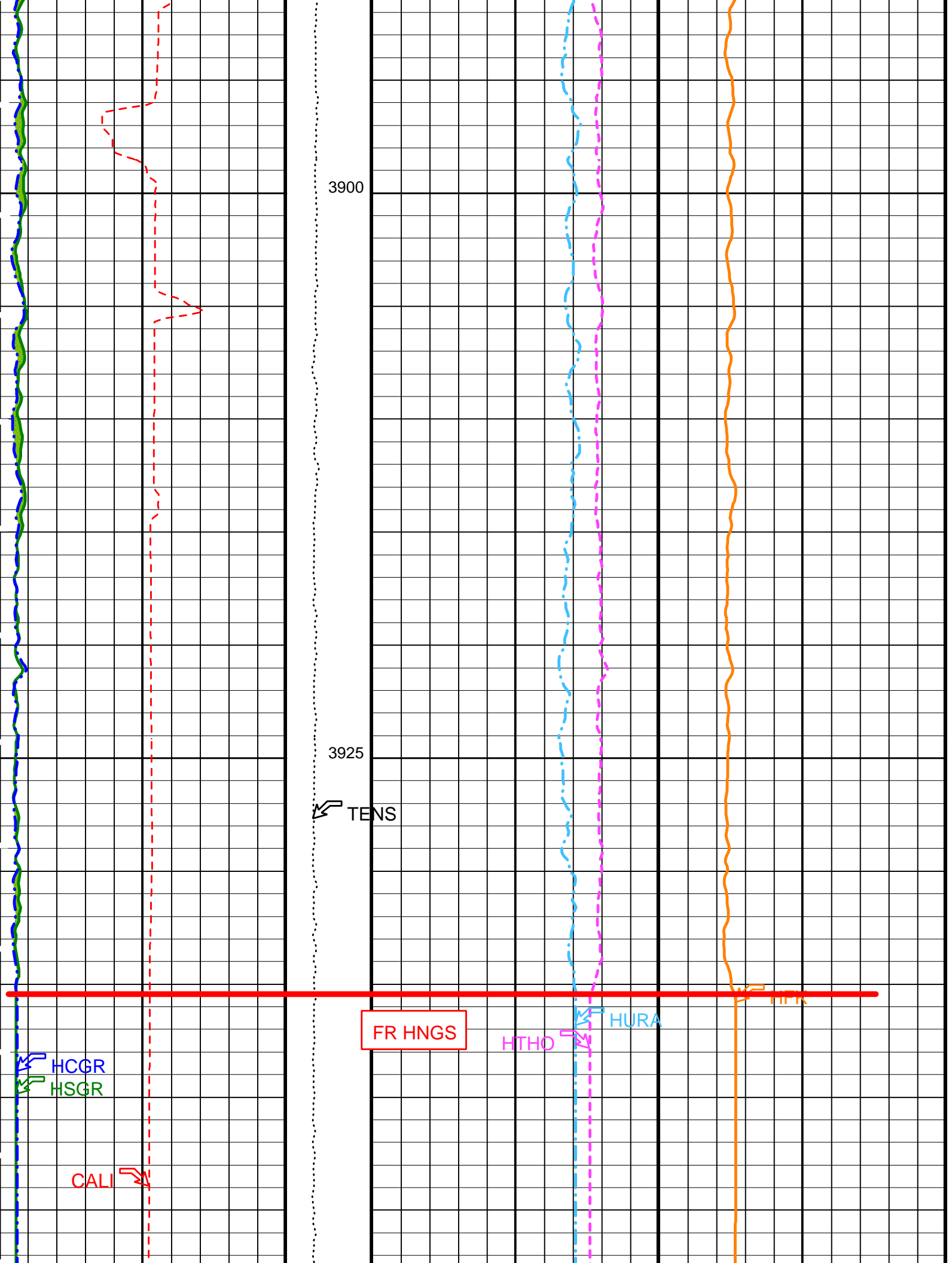
Time Mark Every 60 S



Last Reading HNGS







3900

3925

TENS

FR HNGS

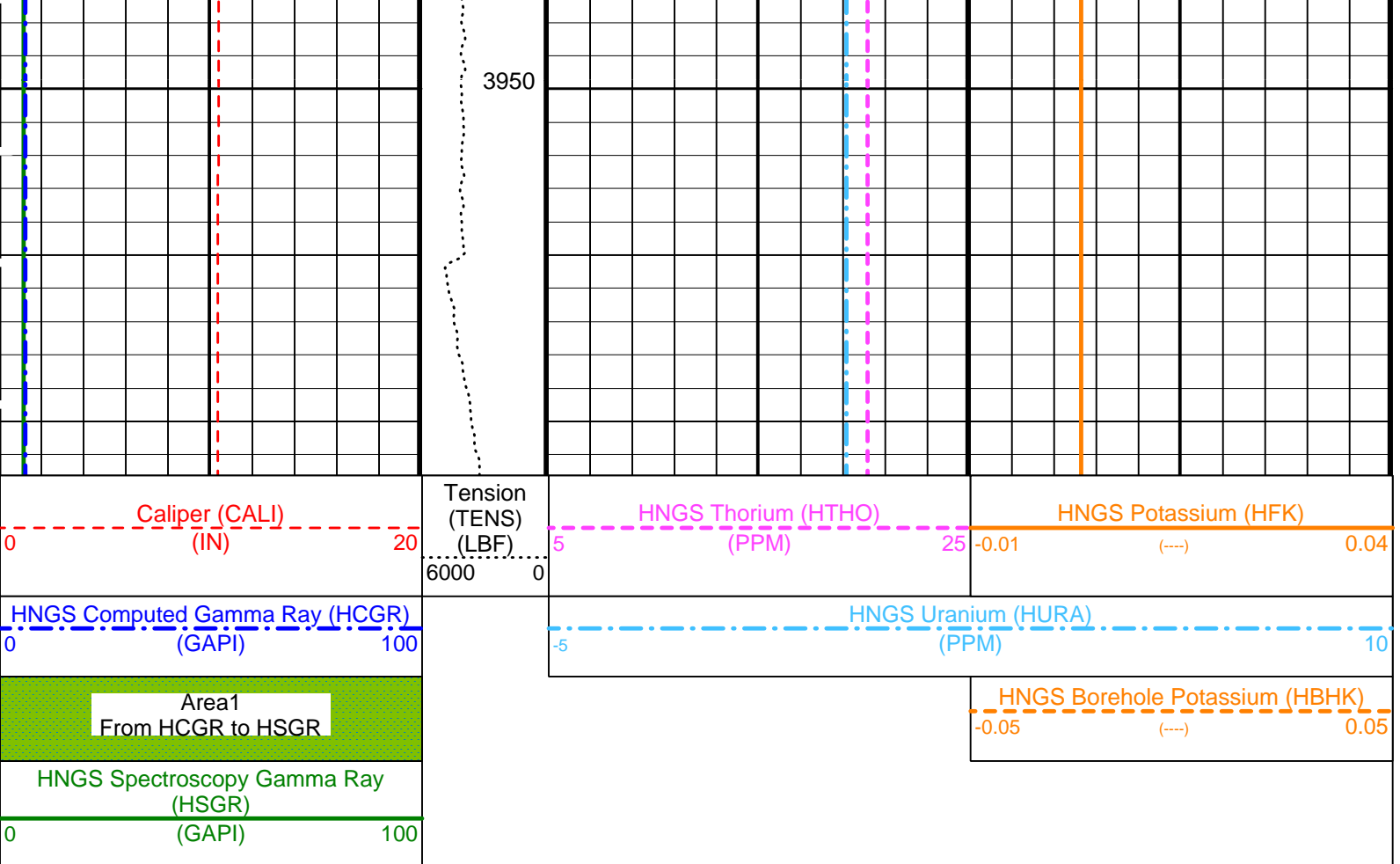
HTHO

HURA

HTRK

HCGR  
HSGR

CALI



PIP SUMMARY

Time Mark Every 60 S

Parameters

DLIS Name	Description	Value
APS-BA: Accelerator-Porosity Tool		
BHS	Borehole Status	OPEN
GCSE	Generalized Caliper Selection	CALI
HNGS-BA: Hostile Natural Gamma Ray Sonde		
BAR1	HNGS Detector 1 Barite Constant	1
BAR2	HNGS Detector 2 Barite Constant	1
BHK	HNGS Borehole Potassium Correction Concentration	0
BHS	Borehole Status	OPEN
CSD1	Inner Casing Outer Diameter	0 IN
CSD2	Outer Casing Outer Diameter	0 IN
CSW1	Inner Casing Weight	0 LB/F
CSW2	Outer Casing Weight	0 LB/F
DBCC	HNGS Barite Constant Correction Flag	NONE
GCSE	Generalized Caliper Selection	CALI
H1P	HNGS Detector 1 Allow/Disallow In Processing	ALLOW
H2P	HNGS Detector 2 Allow/Disallow In Processing	ALLOW
HABK	HNGS Borehole Potassium Running Average	-0.0089739
HALF	HNGS Alpha Filter Length	60 IN
HCRB	HNGS Apply Borehole Potassium Correction	NONE
HMWM	Mud Weighting Material	NATU
HNPE	HNGS Processing Enable	YES
S1BI	HNGS Detector 1 Calibration Bismuth Count Rate	1.3 CPS
S2BI	HNGS Detector 2 Calibration Bismuth Count Rate	1.3 CPS
SGRC	HNGS Standard Gamma-Ray Correction Flag	YES
TPOS	Tool Position	ECCE
VBA1	HNGS Detector 1 Variable Barite Factor Running Average	0.833538
VBA2	HNGS Detector 2 Variable Barite Factor Running Average	0.846703
System and Miscellaneous		
BS	Bit Size	9.875 IN
DFD	Drilling Fluid Density	1.07 G/C3

Format: HNGSYields

Vertical Scale: 1:200

Graphics File Created: 22-Nov-2002 11:45

DLT-E	10C0-306	HLD1-A	10C0-306
DTA-A	10C0-306	NPLC-B	OP10-KP1
APS-BA	OP10-KP1	HNGS-BA	OP10-KP1
DTC-H	10C0-306	BSP	10C0-306

### Output DLIS Files

DEFAULT	DLL_LDL_APS_NGS_040LUP	FN:48	PRODUCER	22-Nov-2002 11:45
DLL_CUST	DLL_LDL_APS_NGS_040LUP	FN:49	PRODUCER	22-Nov-2002 11:45

Company: Lamont Doherty

**Schlumberger**

Well: ODP Leg 206, Site 1256C

Field: Fast Spreading Crust

Country: Coata Rica

Ocean: Pacific Ocean

HNGS Natural Gamma Ray