

DISCLAIMER

THE USE OF AND RELIANCE UPON THIS RECORDED-DATA BY THE HEREIN NAMED COMPANY (AND ANY OF ITS AFFILIATES, PARTNERS, REPRESENTATIVES, AGENTS, CONSULTANTS AND EMPLOYEES) IS SUBJECT TO THE TERMS AND CONDITIONS AGREED UPON BETWEEN SCHLUMBERGER AND THE COMPANY, INCLUDING: (a) RESTRICTIONS ON USE OF THE RECORDED-DATA; (b) DISCLAIMERS AND WAIVERS OF WARRANTIES AND REPRESENTATIONS REGARDING COMPANY'S USE OF AND RELIANCE UPON THE RECORDED-DATA; AND (c) CUSTOMER'S FULL AND SOLE RESPONSIBILITY FOR ANY INFERENCE DRAWN OR DECISION MADE IN CONNECTION WITH THE USE OF THIS RECORDED-DATA.



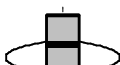
OTHER SERVICES1 OS1: DLL/HLDT/APS/HNGS OS2: UBI/GR OS3: WST OS4: OS5:	OTHER SERVICES2 OS1: OS2: OS3: OS4: OS5:
--	---

REMARKS: RUN NUMBER 1 Hole cored with RCB All depths in Meters Below Rig Floor (MBRF). Salt Water used to fill the hole. WHC was run. Sea Floor Driller- 3645.4 MBRF. Total Depth Driller- 4379.4 Total Depth Logger- 4396 MBRF. Casing Driller- 3914.4 MBRF. Casing Logger- 3913 MBRF. FMS data not aquired due to tool problem.	REMARKS: RUN NUMBER 2
---	-----------------------

RUN 1			RUN 2		
SERVICE ORDER #:	10C0-306		SERVICE ORDER #:		
PROGRAM VERSION:			PROGRAM VERSION:		
FLUID LEVEL:			FLUID LEVEL:		
LOGGED INTERVAL	START	STOP	LOGGED INTERVAL	START	STOP

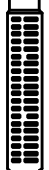
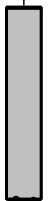
EQUIPMENT DESCRIPTION

RUN 1		RUN 2	
SURFACE EQUIPMENT			
GSR-U/Y 135 WITM (DTS)-A			

DOWNHOLE EQUIPMENT			
LEH-QT LEH-QT 1497		32.34	
DTC-H ECH-KC 9343	CTEM TelStatus ToolStatu 	31.17 31.45 30.54	
AH-MCD-TOP AH-MCD-TOP		30.54	

DSST-B
 SPAC-B 9128
 ECH-SD 8127
 SMDR-BD 11
 SSIJ-BA 8151
 SMDX-AA 66

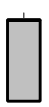
28.25



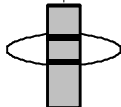
PWF — 12.71

Gamma Ray — 12.43 12.71

SGT-N
 SGH-K 2450
 SGC-TB 9585
 SGD-TAA 1



AH-Bot
 AH-Bot 1



11.03

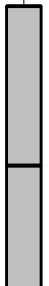
DTA-A
 ECH-KE 8455
 DTA-A 8261



8.90

MEST-B
 MEAH-B 701
 MEAC-A 833
 MEPH-A 702
 GPIC-A 719
 MEPC-AB 806
 MEDS-B 724

7.68



MEDR MEAC
 MEPC MEDS-B
 HV DF
 Tension GPIT

0.46

0.00

TOOL ZERO

MAXIMUM STRING DIAMETER 4.50 IN
 MEASUREMENTS RELATIVE TO TOOL ZERO
 ALL LENGTHS IN METERS

Input DLIS Files

DEFAULT FMS_DSI_034LUP FN:34 PRODUCER 28-Dec-2002 22:02 4398.3 M 3897.6 M

Output DLIS Files

DEFAULT DSI_049PUP FN:61 PRODUCER 31-Dec-2002 11:09 4398.3 M 3898.1 M

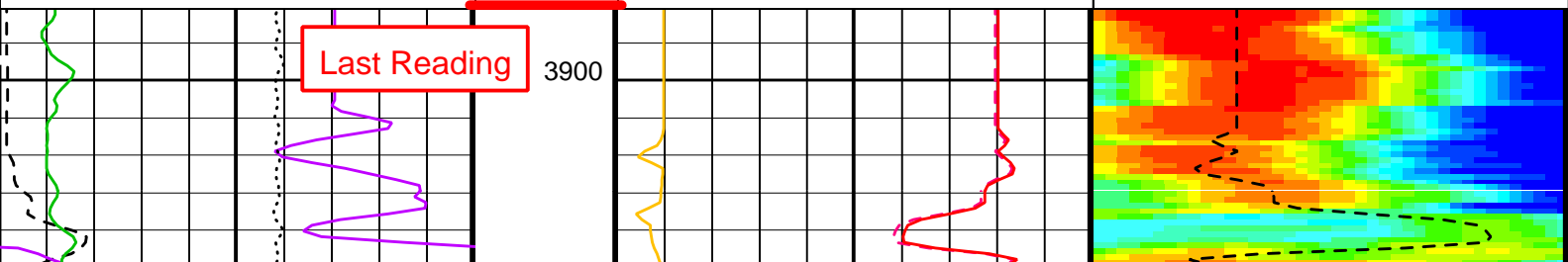
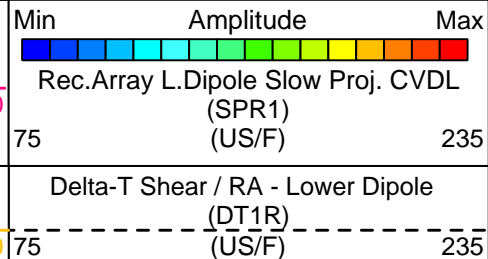
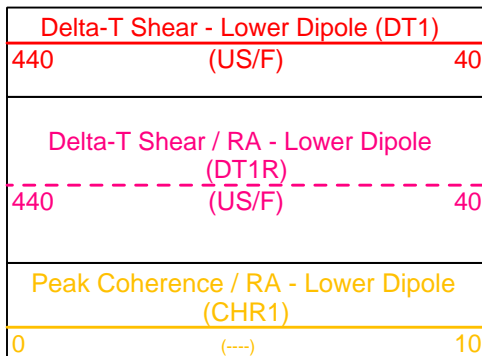
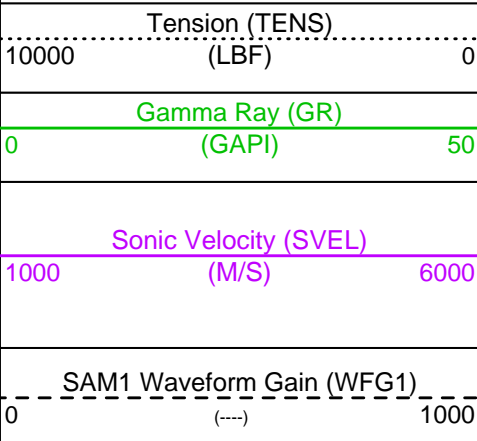
OP System Version: 10C0-306
MCM

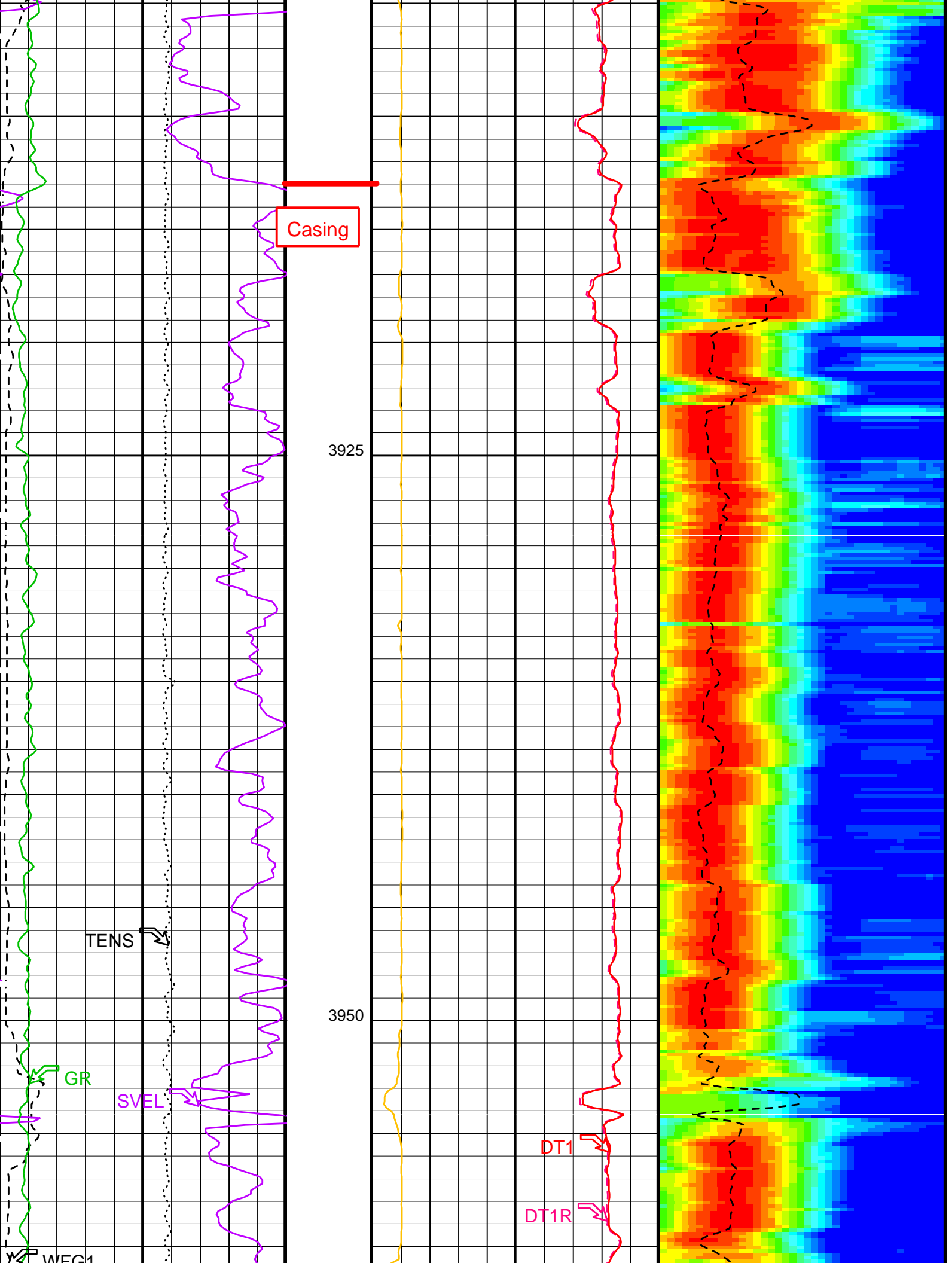
MAIN UP LOG

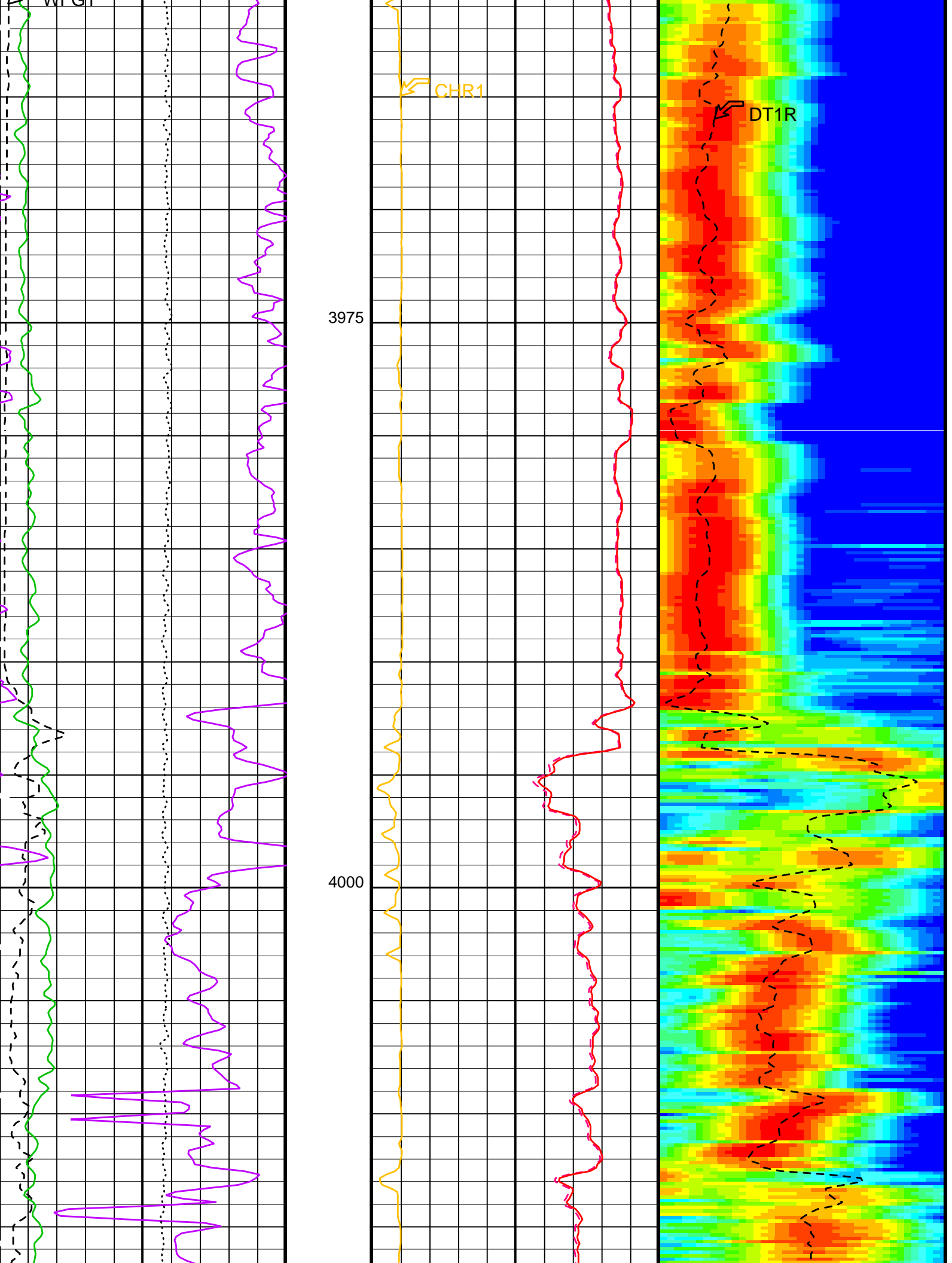
SGT-N 10C0-306 DSST-B OP10-KP1
DTC-H 10C0-306

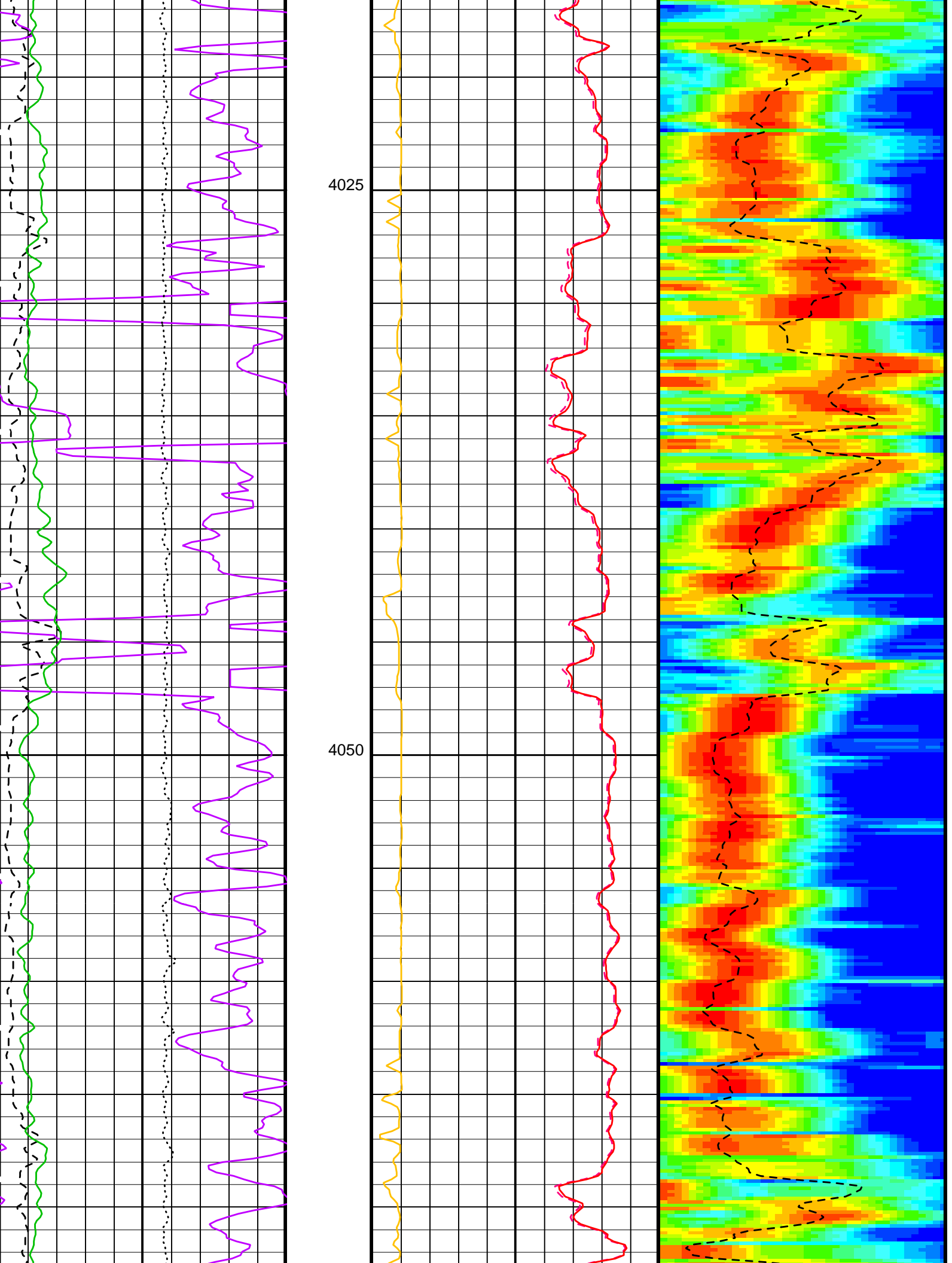
PIP SUMMARY

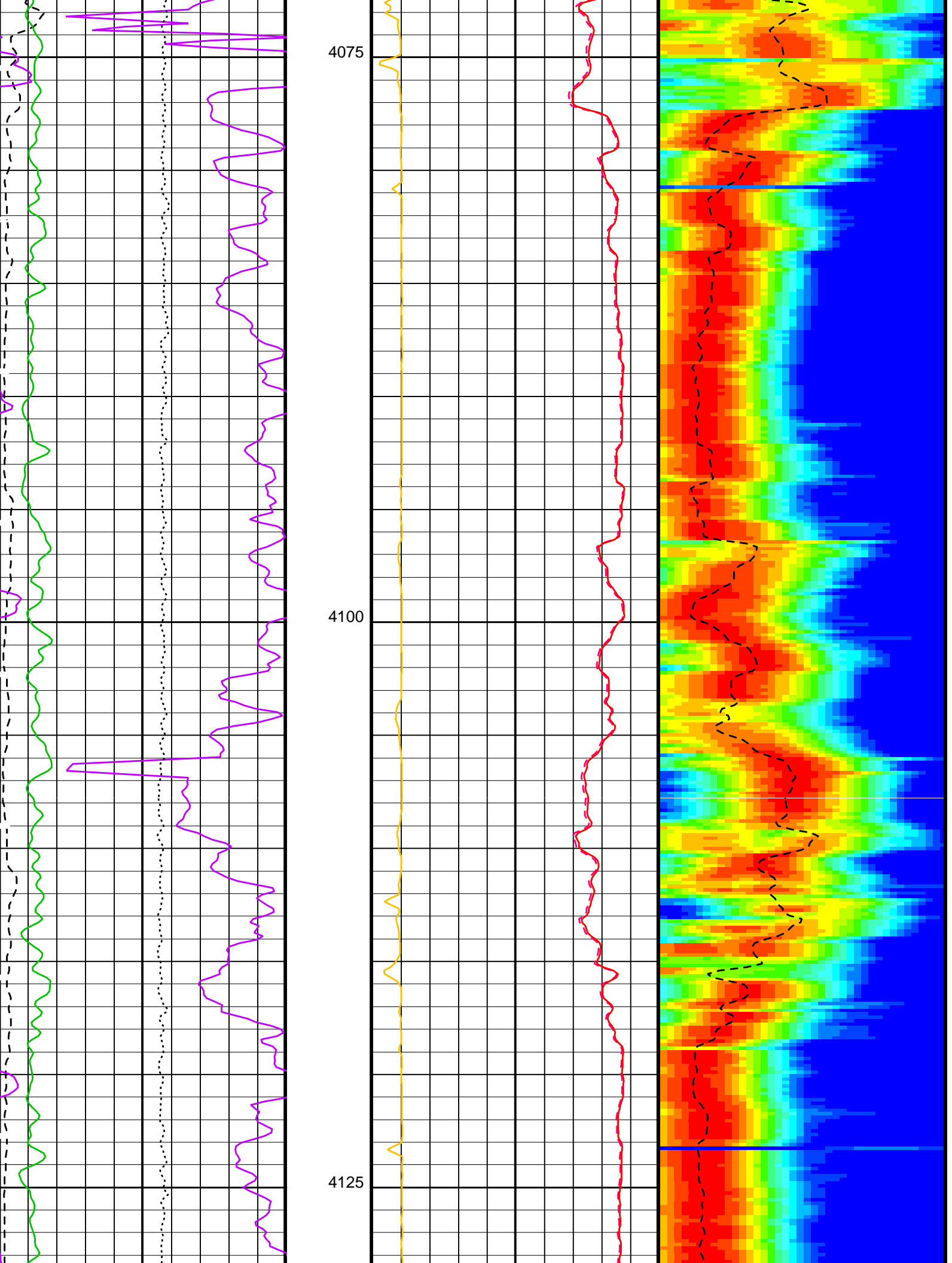
Time Mark Every 60 S

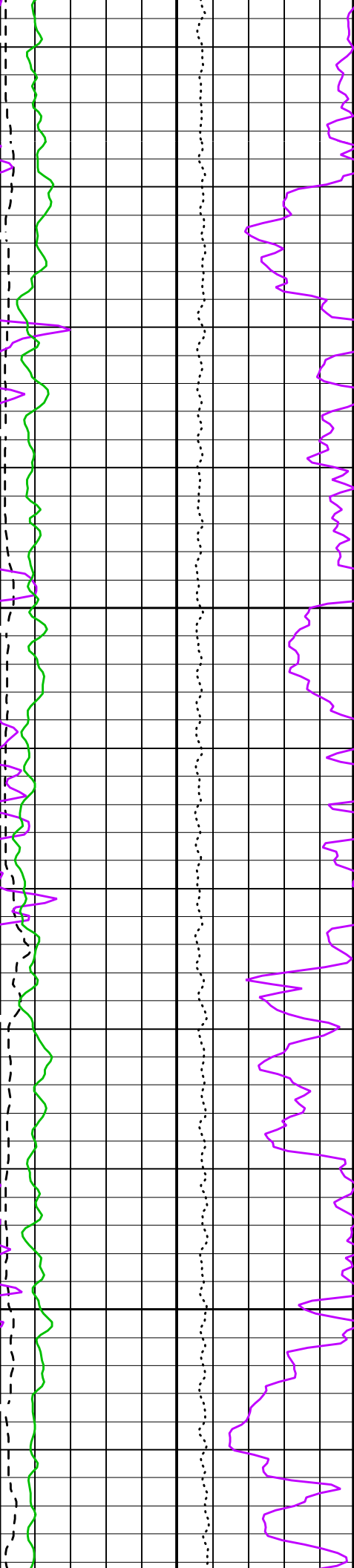






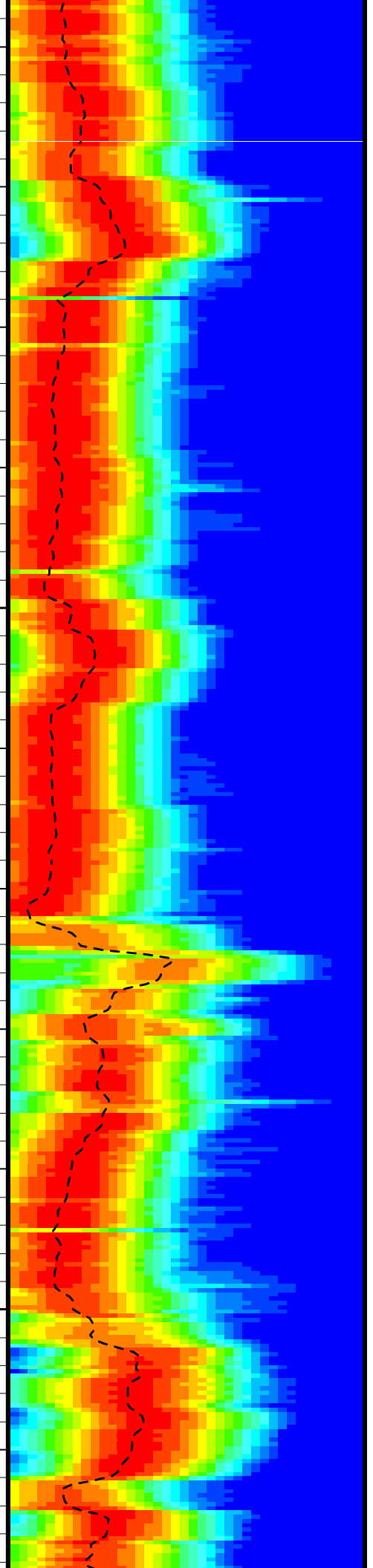
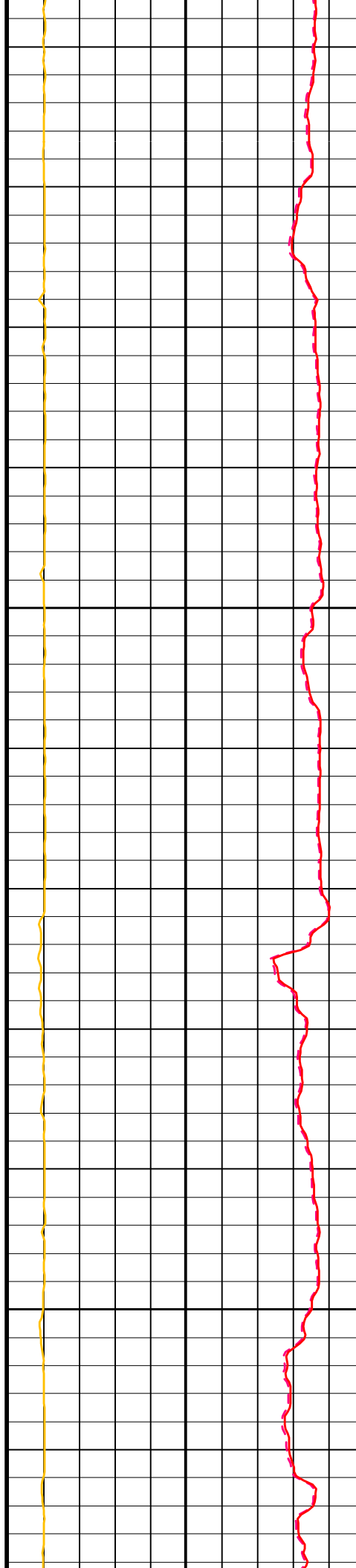


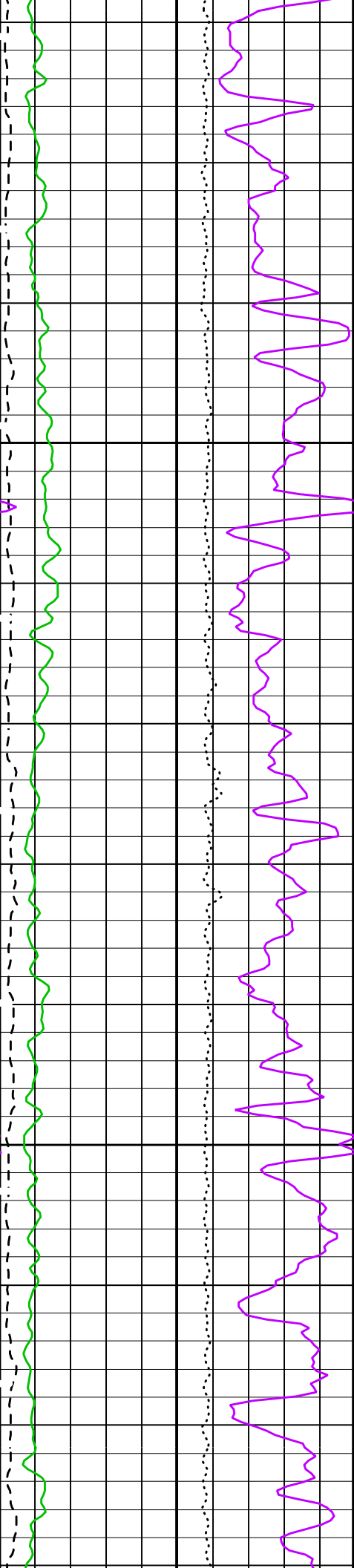




4150

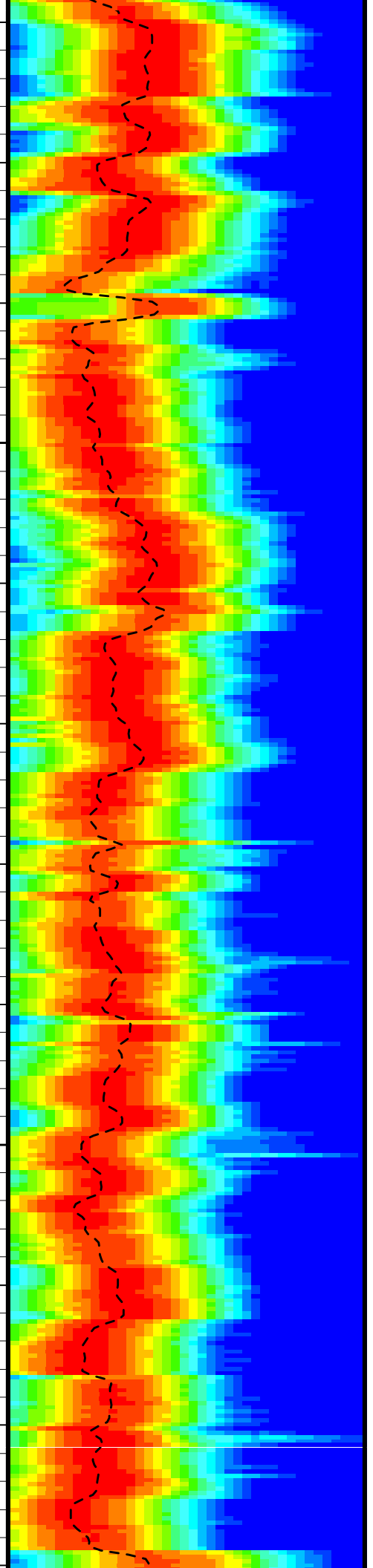
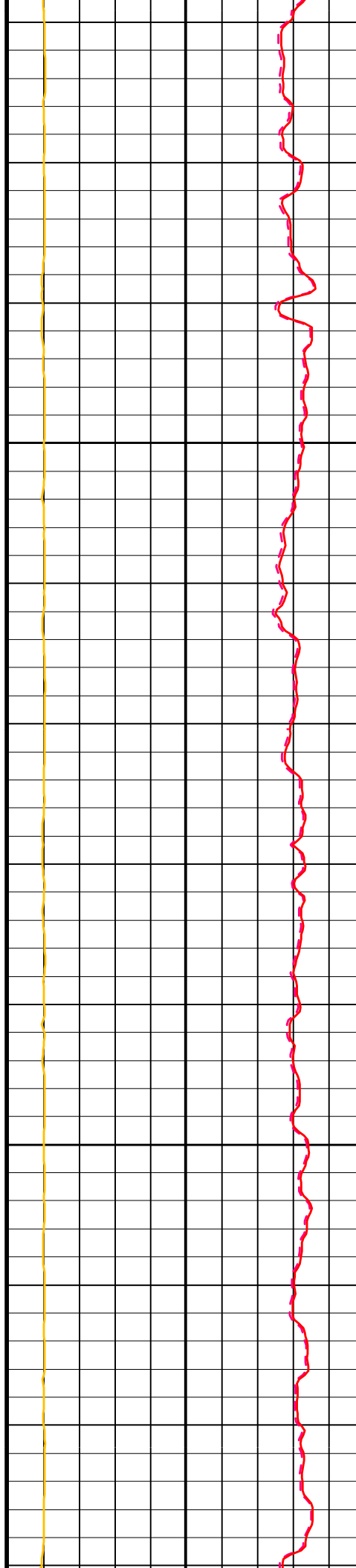
4175

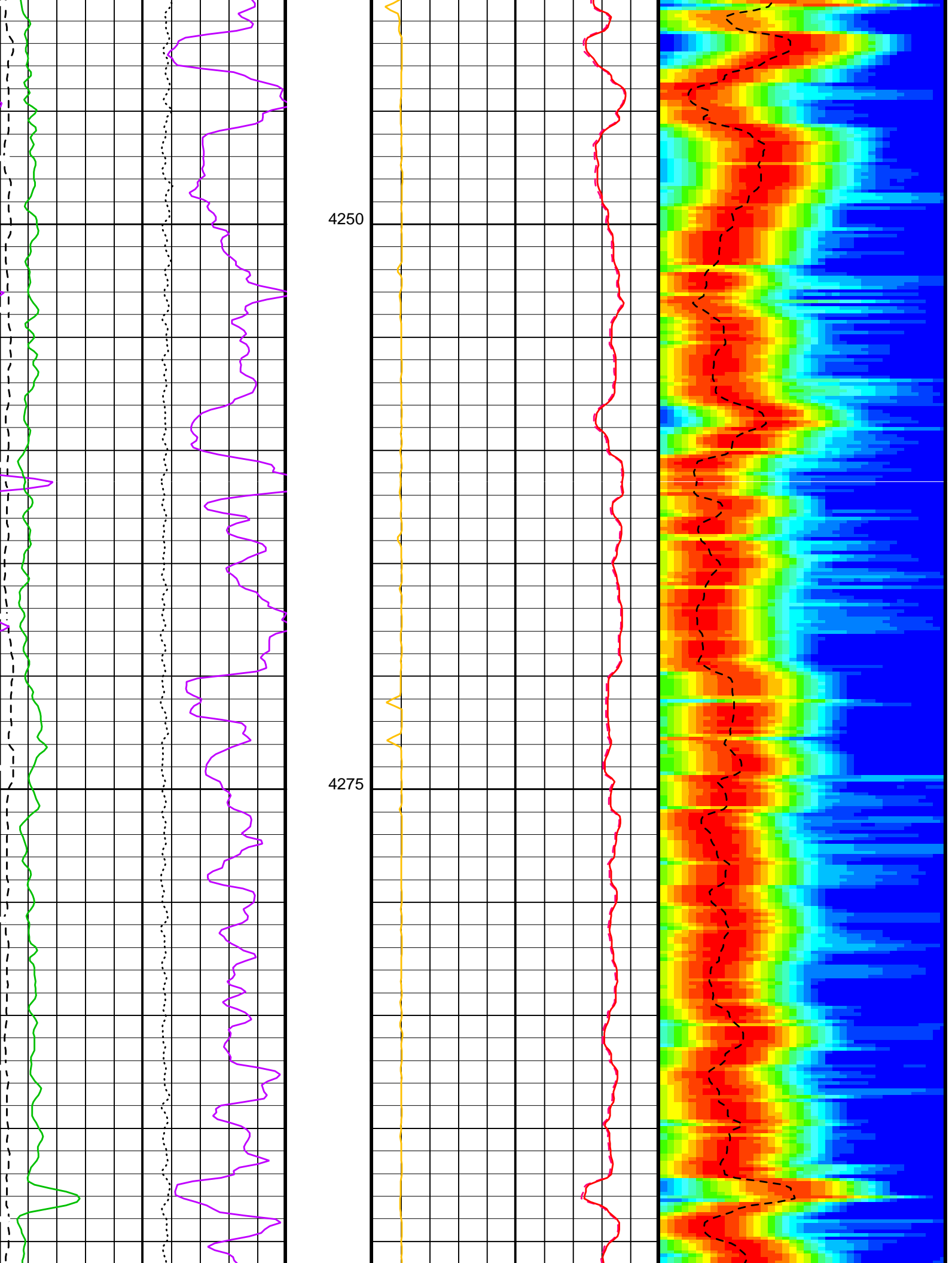


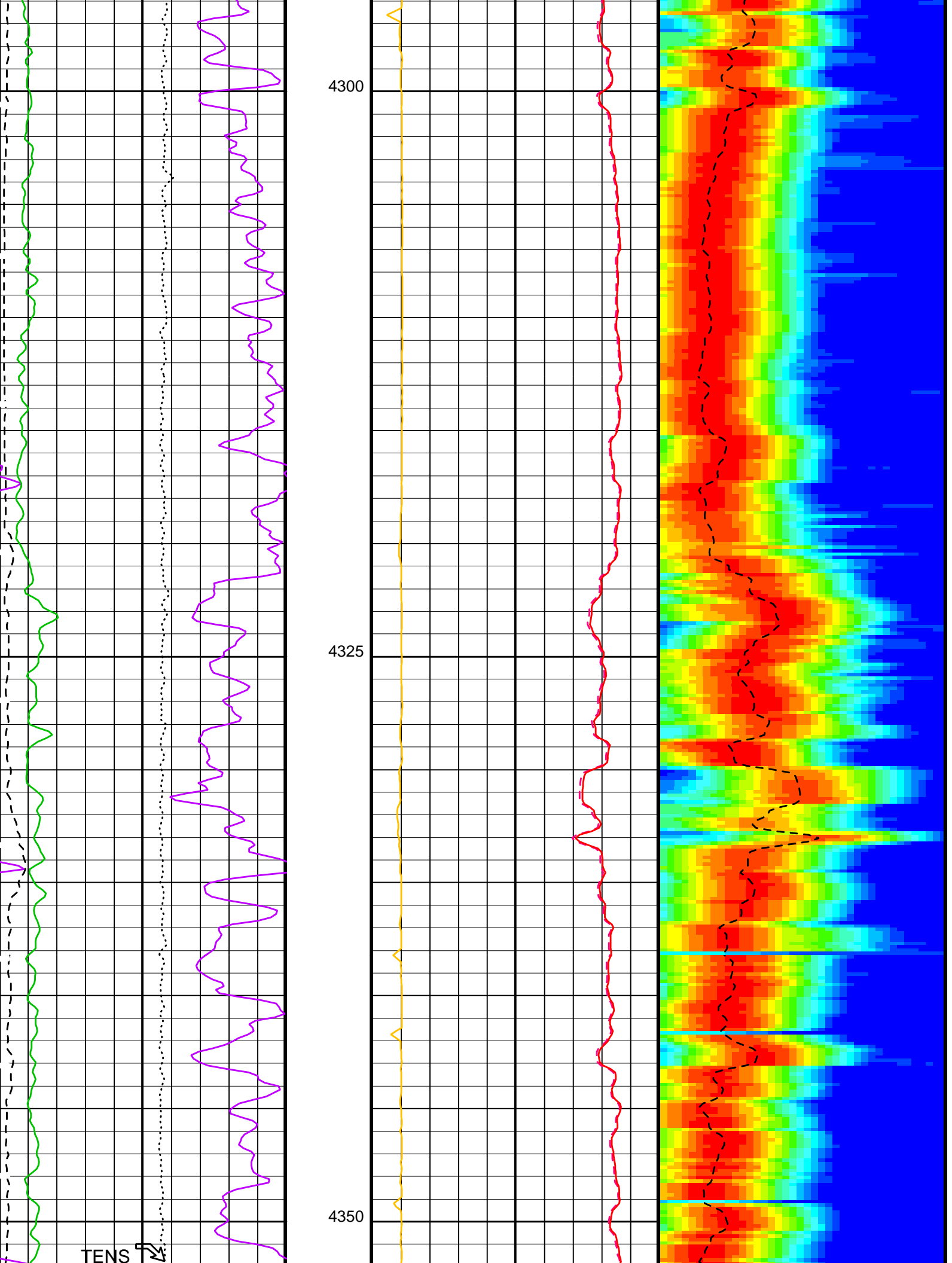


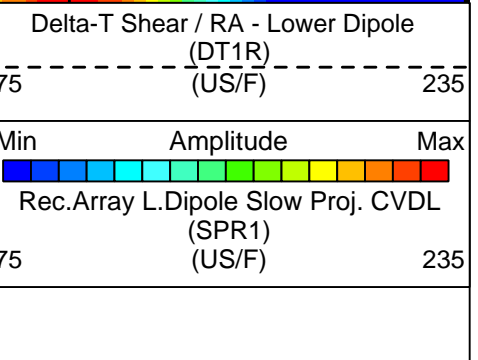
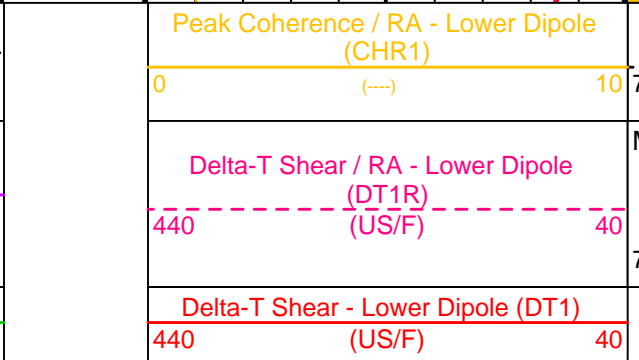
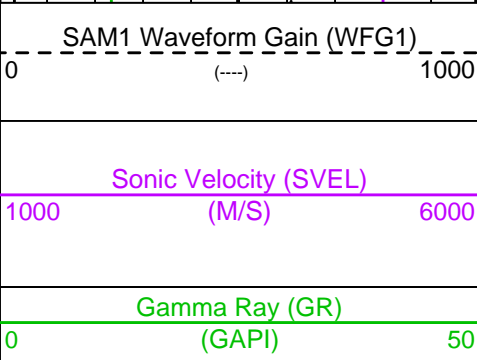
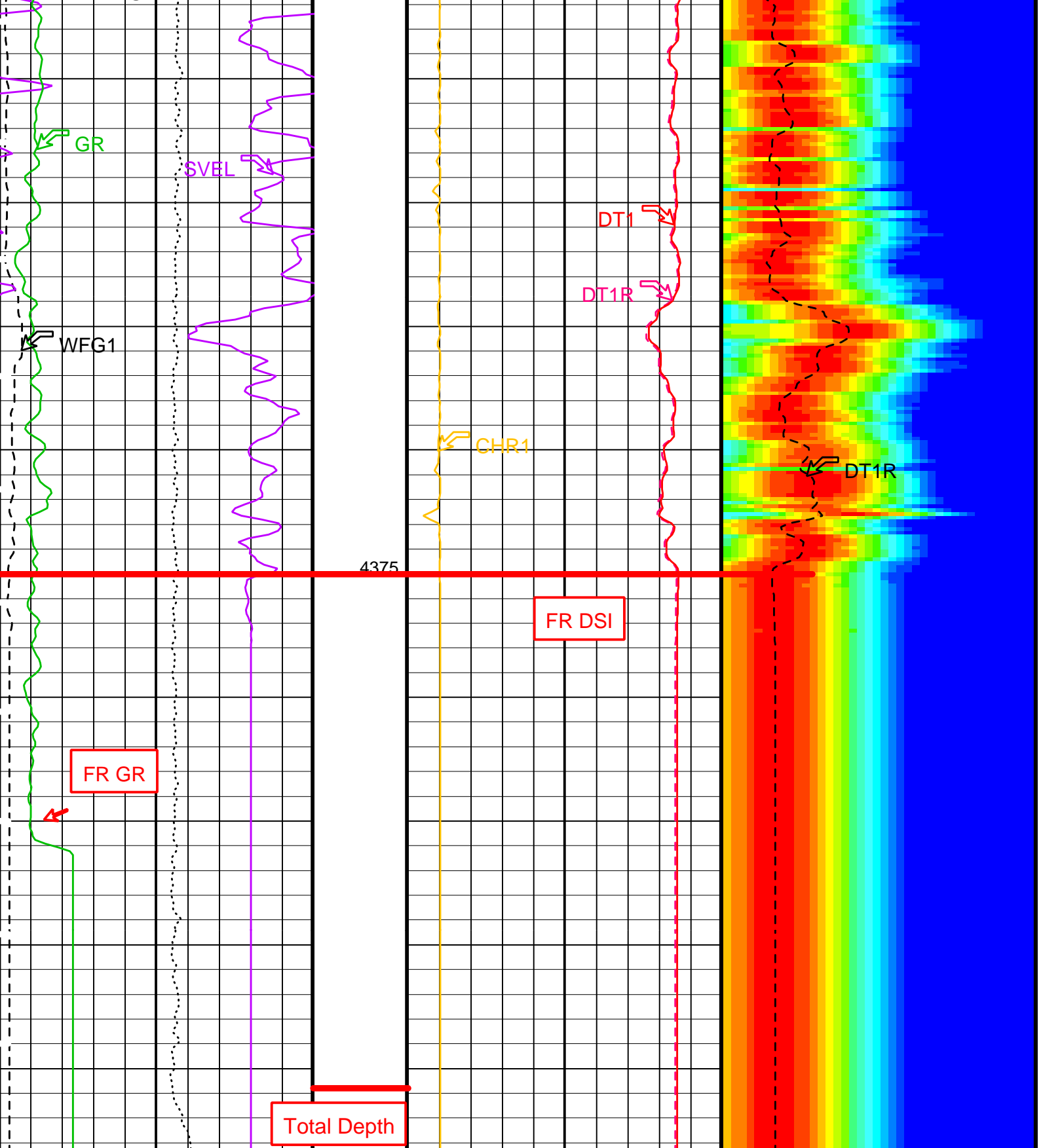
4200

4225









Tension (TENS)	
10000 (LBF)	0

PIP SUMMARY

Time Mark Every 60 S

Parameters

DLIS Name	Description	Value	
	DSST-B: Dipole Shear Imager - B		
DDE1	Digitizing Delay 1	0	US
DDEX	Digitizing Delay X	0	US
DLCS	Label Compressional Source - Dipole Shear	USE	
DSHL	Label Slowness Lower Limit - Dipole Shear	75	US/F
DSHU	Label Slowness Upper Limit - Dipole Shear	235	US/F
DSI1	Digitizer Sample Interval 1	40	US
DSIX	Digitizer Sample Interval X	10	US
DTCS	Compressional Delta-T Source for DTCC Channel	PS_COMP	
DWC1	Digitizer Word Count 1	512	
DWCX	Digitizer Word Count X	512	
LTXG	Lower Dipole Transmitter Geometry	156	IN
NW11	Number Waveform Items 1	8	
RX1G	Receiver 1 Geometry	294	IN
RX2G	Receiver 2 Geometry	300	IN
RX3G	Receiver 3 Geometry	306	IN
RX4G	Receiver 4 Geometry	312	IN
RX5G	Receiver 5 Geometry	318	IN
RX6G	Receiver 6 Geometry	324	IN
RX7G	Receiver 7 Geometry	330	IN
RX8G	Receiver 8 Geometry	336	IN
SAM1	DSST Sonic Acquisition Mode 1 - Lower Dipole Mode	EVEN	
SAMX	DSST Sonic Acquisition Mode X - Both Dipoles or Monopole Mode for Expert	OFF	
SAS1	STC Sonic Array Status - Lower Dipole	255	
SBO1	STC Search Band Offset - Lower Dipole	3000	US
SBW1	STC Search Bandwidth - Lower Dipole	8000	US
SFC1	STC Formation Character - Lower Dipole	FAST	
SFM1	STC Filter - Lower Dipole	B1-3K	
SLL1	STC Slowness Lower Limit - Lower Dipole	75	US/F
SST1	STC Slowness Step - Lower Dipole	4	US/F
SSW1	STC Source Waveform - Lower Dipole	WF_SAM1	
SUL1	STC Slowness Upper Limit - Lower Dipole	235	US/F
SWD1	STC Slowness Width - Lower Dipole	40	US/F
TBF1	STC Time for Baseline Fill - Lower Dipole	0	US
TLL1	STC Time Lower Limit - Lower Dipole	600	US
TST1	STC Time Step - Lower Dipole	200	US
TUL1	STC Time Upper Limit - Lower Dipole	9702.5	US
TWD1	STC Time Width - Lower Dipole	2000	US
TW11	STC Integration Time Window - Lower Dipole	1600	US
TWSX	Transmitter Waveform Select X	0	
WFM1	Waveform Mode 1	W1	
	System and Miscellaneous		
DO	Depth Offset for Playback	0.0	M
PP	Playback Processing	RECOMPUTE	

Format: DSST_LOWER_DIPOLE_VDL_COLOR Vertical Scale: 1:200 Graphics File Created: 31-Dec-2002 11:09

OP System Version: 10C0-306

MCM

SGT-N	10C0-306	DSST-B	OP10-KP1
DTC-H	10C0-306		

Input DLIS Files

DEFAULT	FMS_DSI_034LUP	FN:34	PRODUCER	28-Dec-2002 22:02	4398.3 M	3897.6 M
---------	----------------	-------	----------	-------------------	----------	----------

Output DLIS Files

DEFAULT	DSI_049PUP	FN:61	PRODUCER	31-Dec-2002 11:09		
---------	------------	-------	----------	-------------------	--	--

Input DLIS Files

DEFAULT	FMS_DSI_034LUP	FN:34	PRODUCER	28-Dec-2002 22:02	4398.3 M	3897.6 M
---------	----------------	-------	----------	-------------------	----------	----------

Output DLIS Files

DEFAULT DSI_049PUP FN:61 PRODUCER 31-Dec-2002 11:09 4398.3 M 3898.1 M

OP System Version: 10C0-306

MCM

MAIN UP LOG

SGT-N 10C0-306
DTC-H 10C0-306

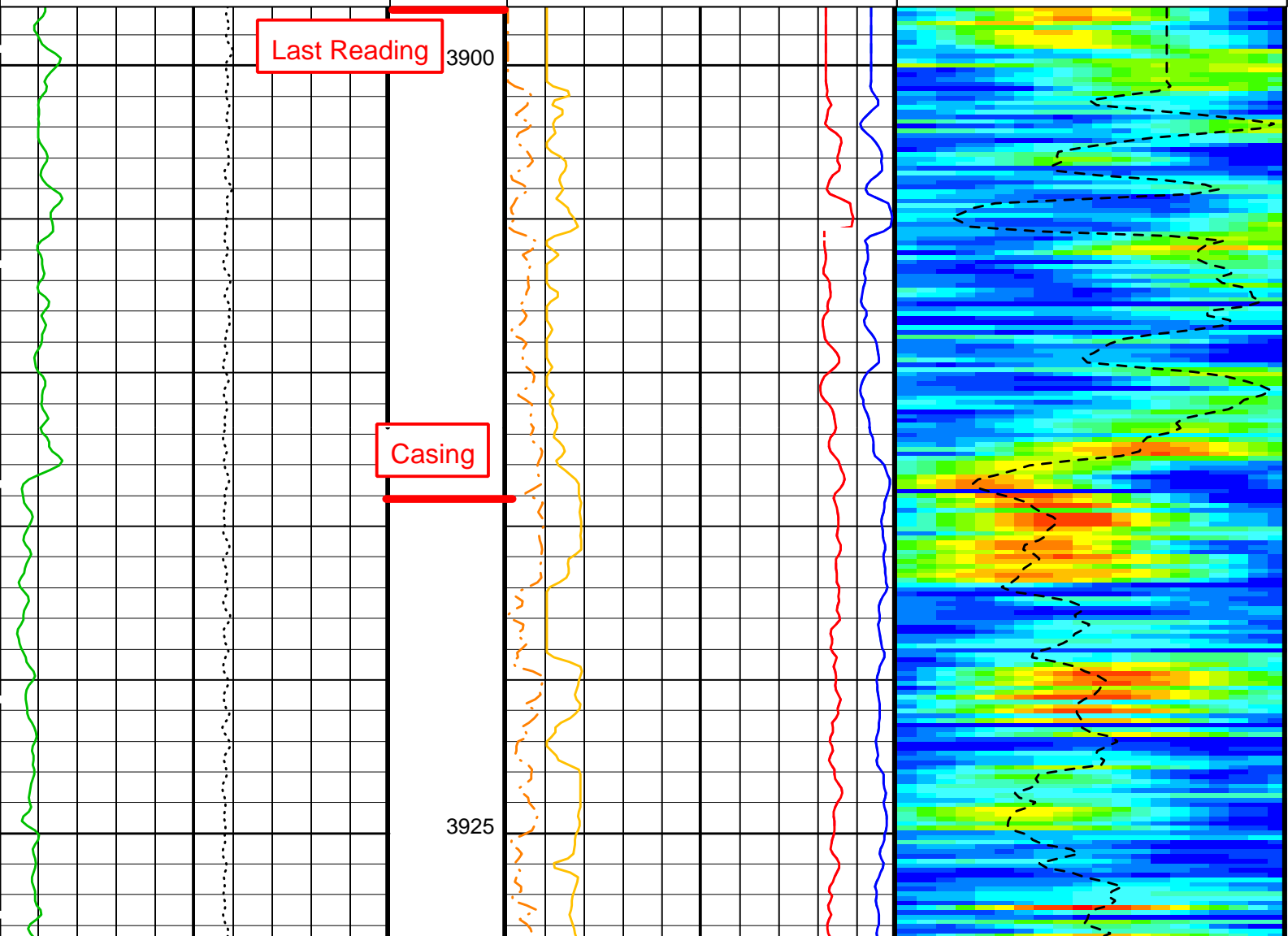
DSST-B

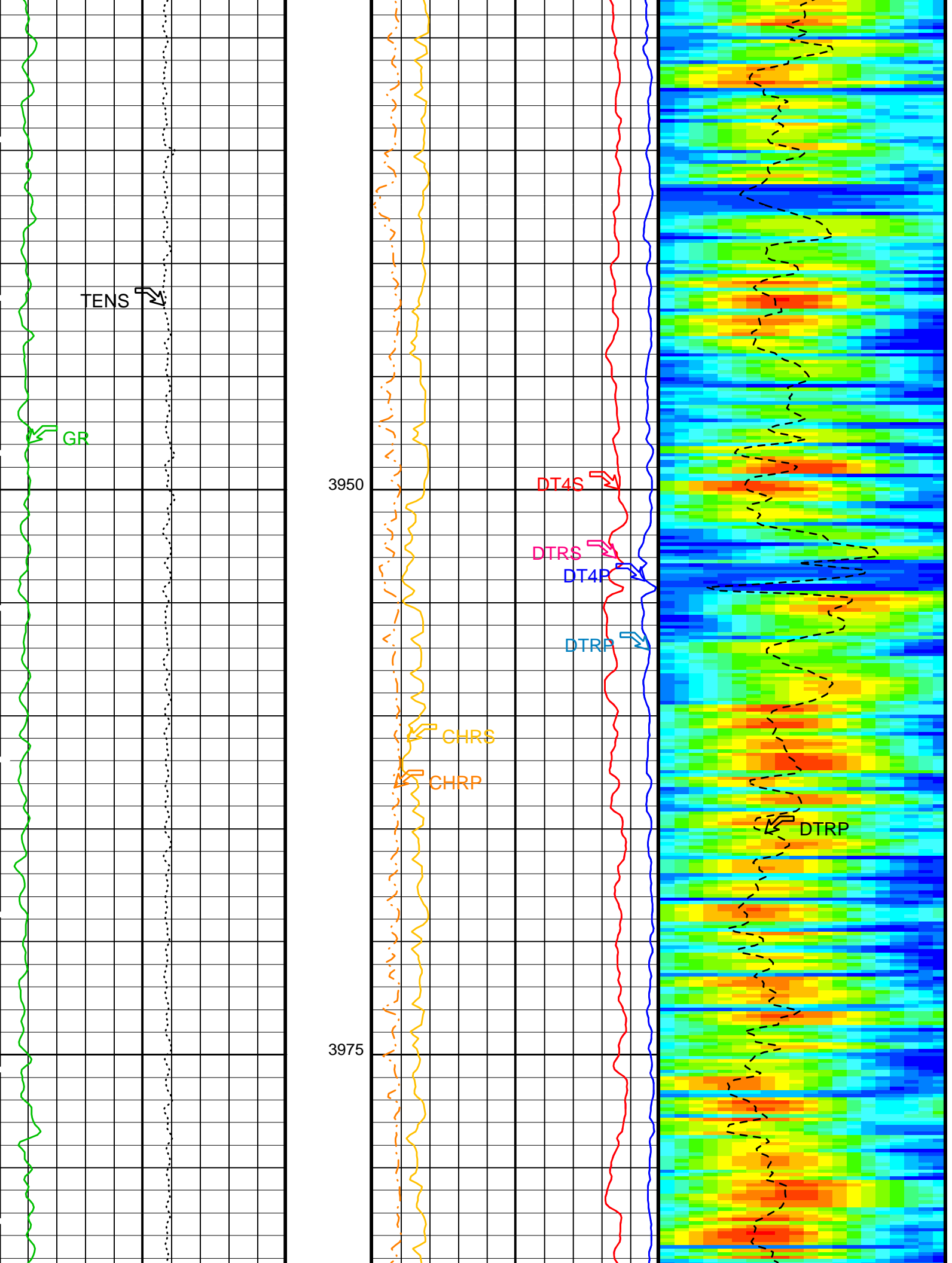
OP10-KP1

PIP SUMMARY

Time Mark Every 60 S

	Delta-T Shear - P & S (DT4S) 440 (US/F) 40	
	Delta-T Shear / RA - P & S (DTRS) 440 (US/F) 40	
	Delta-T Comp - P & S (DT4P) 440 (US/F) 40	
	Delta-T Comp / RA - P & S (DTRP) 440 (US/F) 40	
Tension (TENS) (LBF)	Peak Coherence / RA - P & S Shear (CHRS) -1 (---) 9	Min Amplitude Max Rec.Array P&S Slow Proj. CVDL (SPR4) (US/F) 40 80
Gamma Ray (GR) (GAPI)	Peak Coherence / RA - P & S Comp (CHRP) 0 (---) 10	Delta-T Comp / RA - P & S (DTRP) (US/F) 40 80





TENS

GR

3950

DT4S

DTRS

DT4P

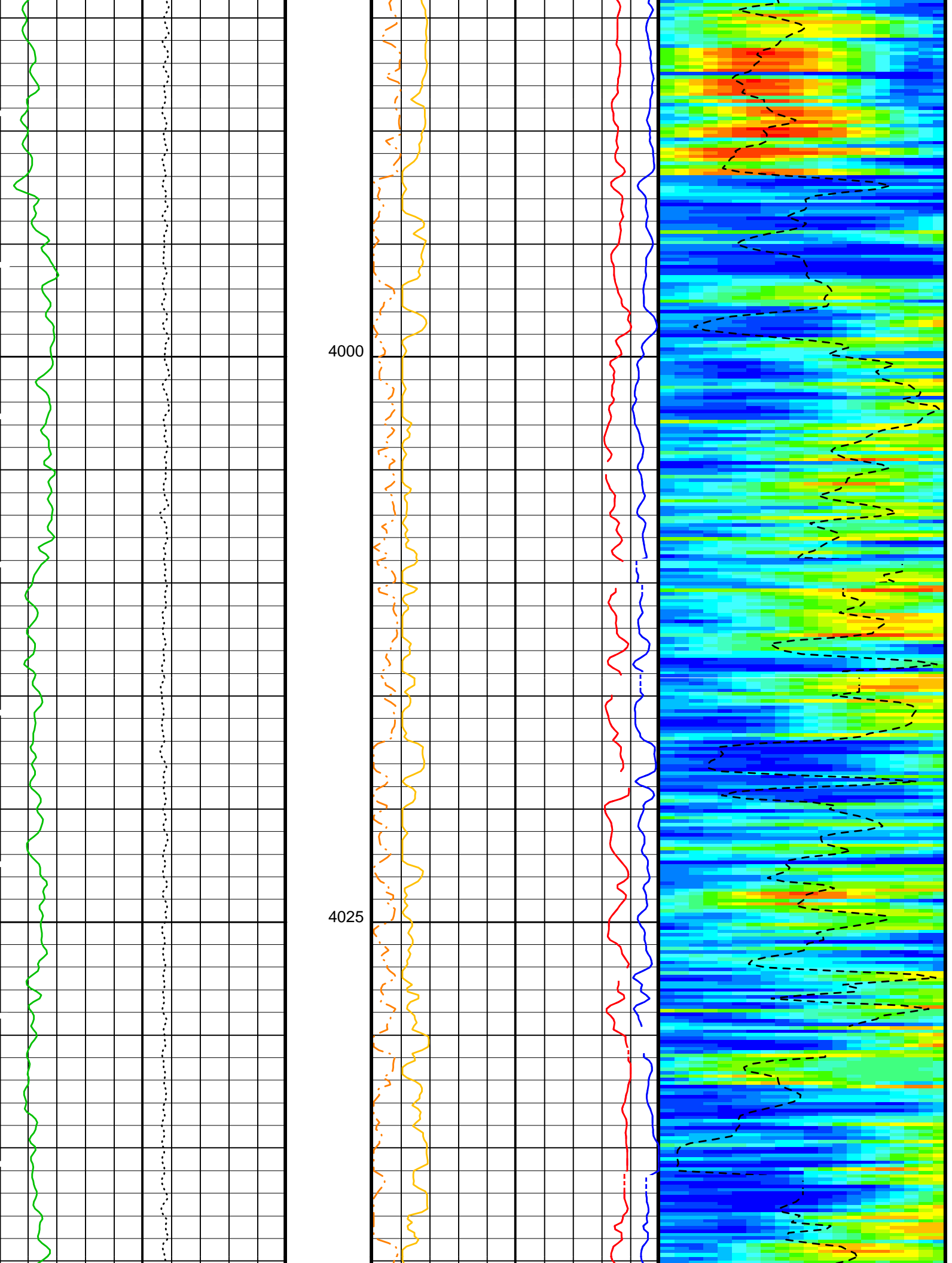
DTRP

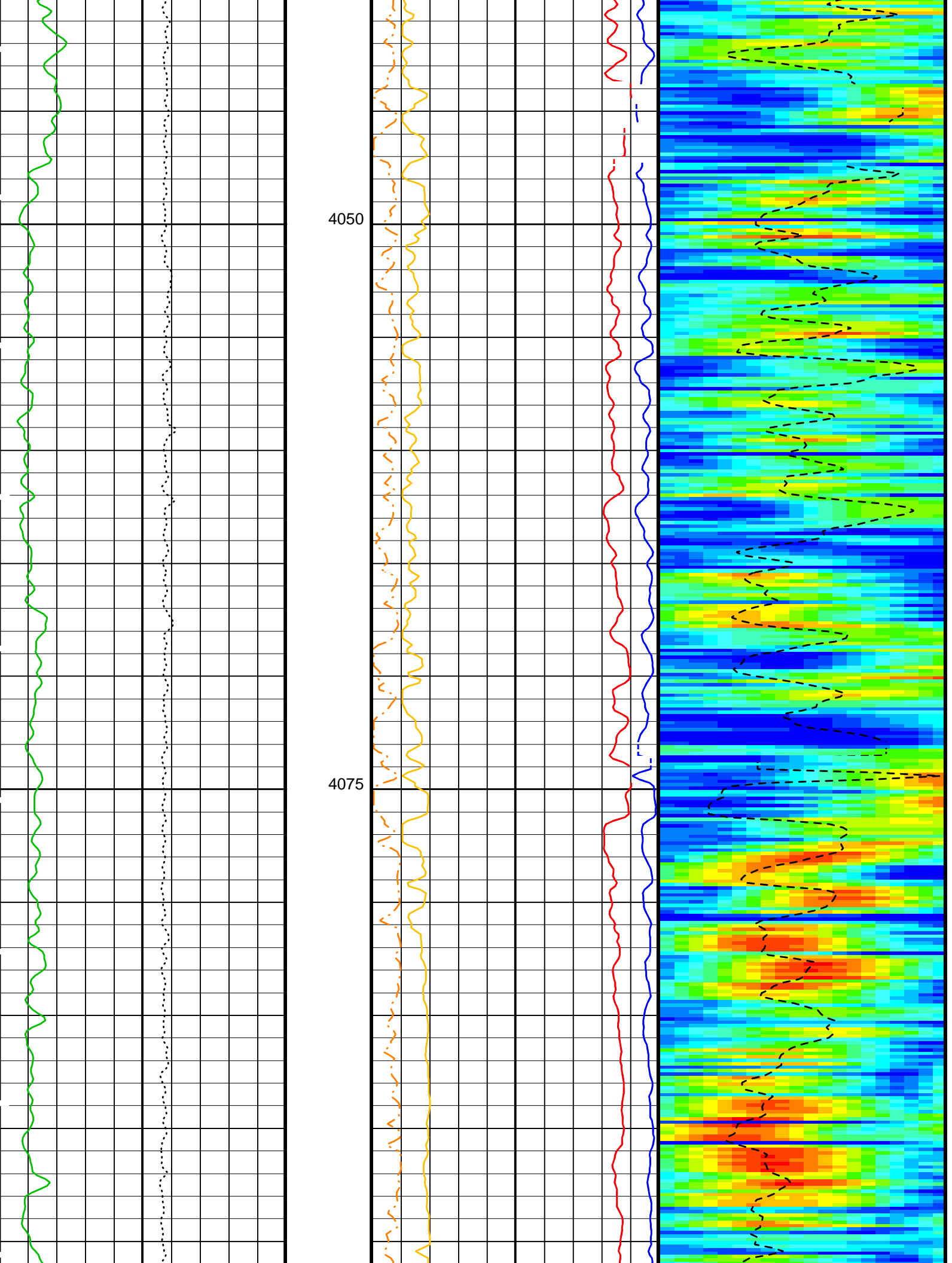
CHRS

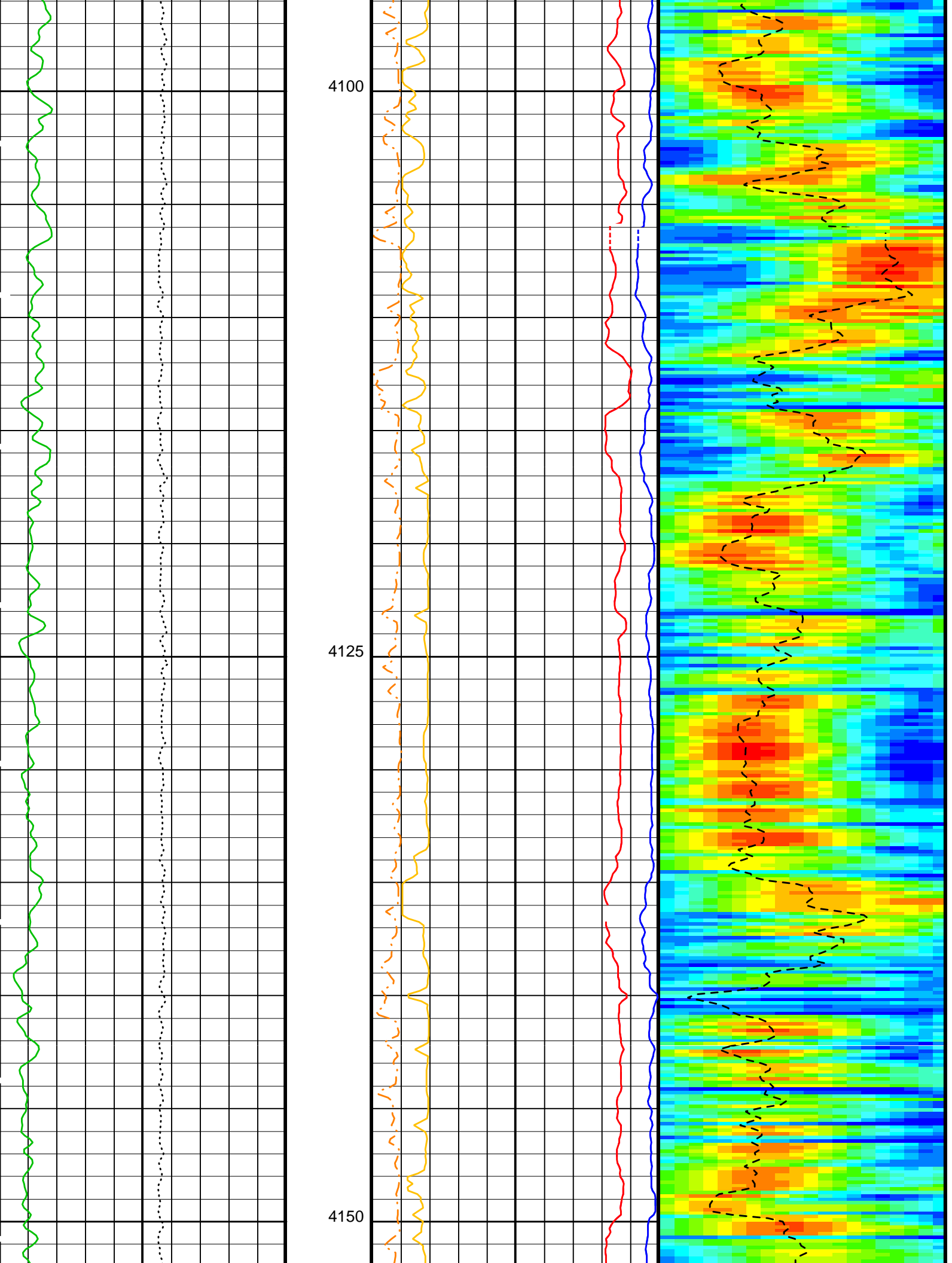
CHRP

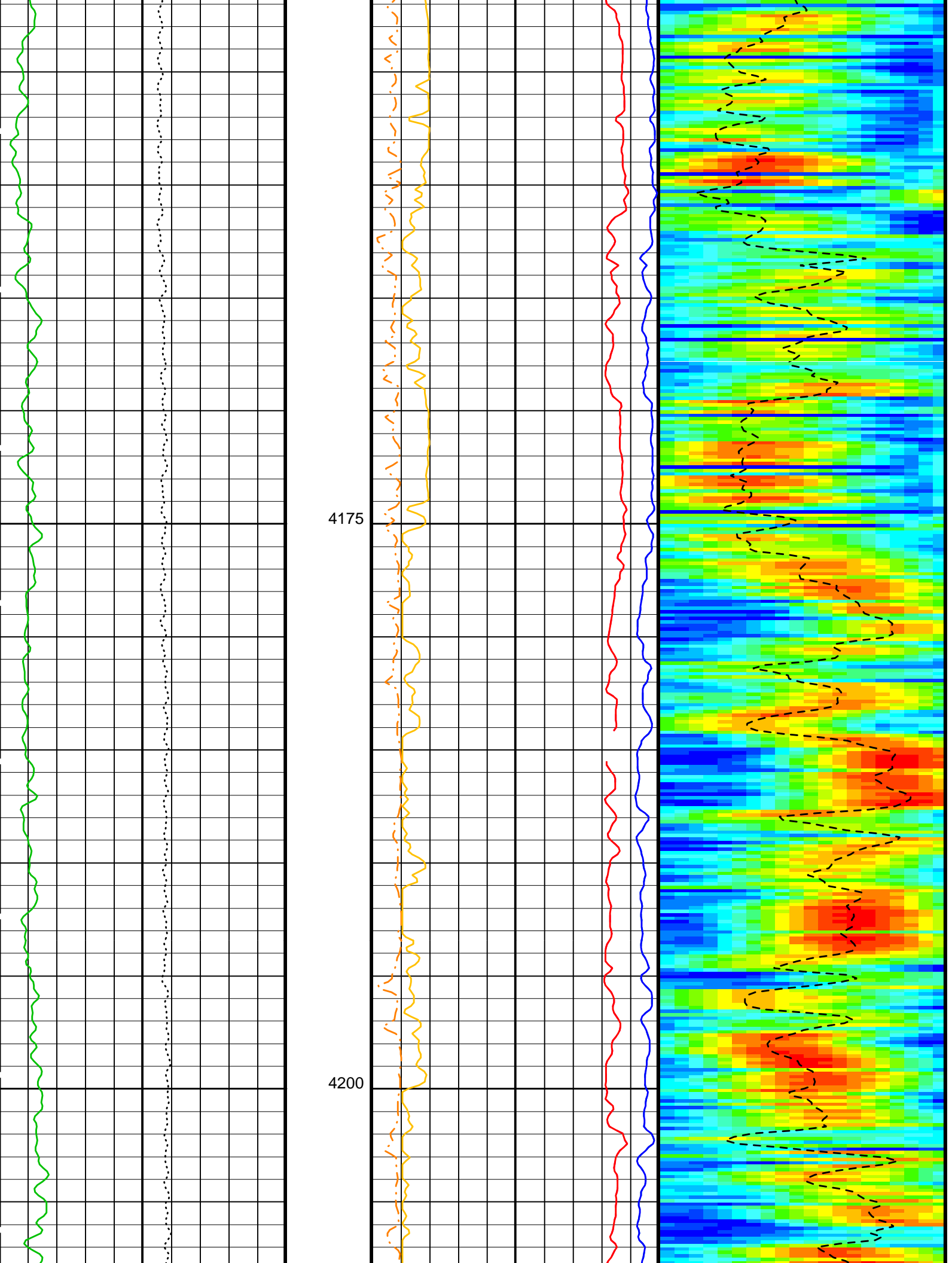
DTRP

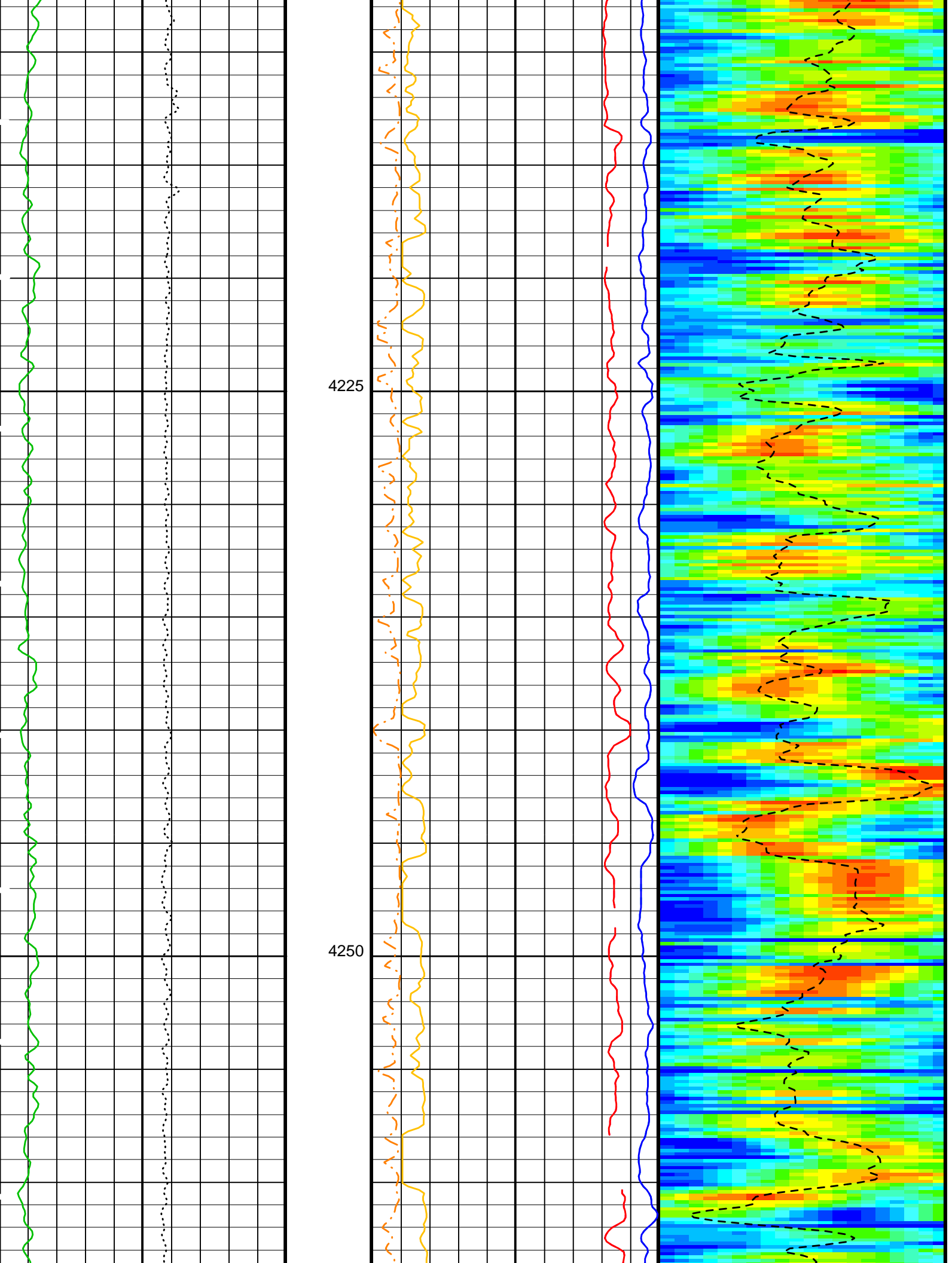
3975

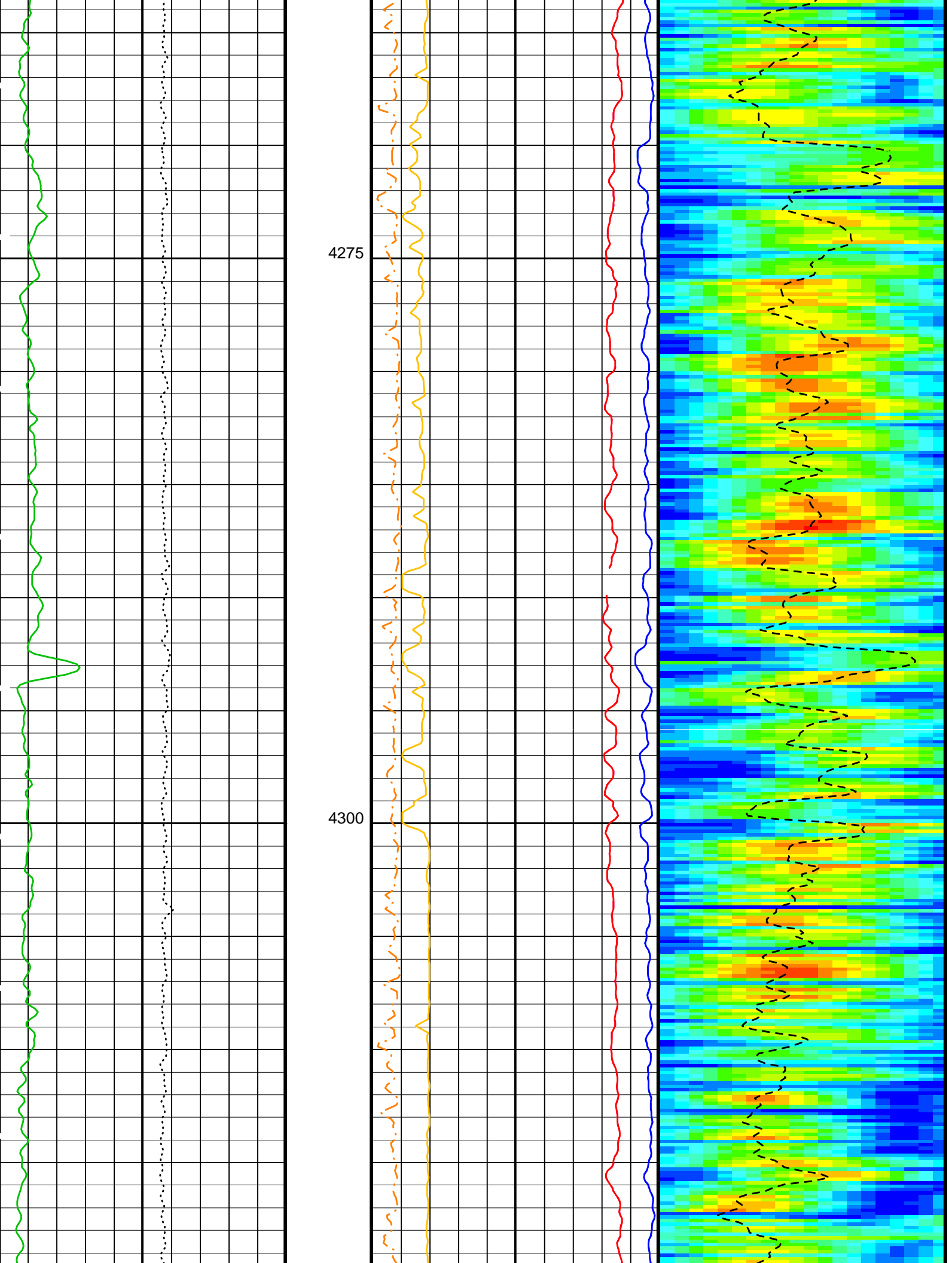


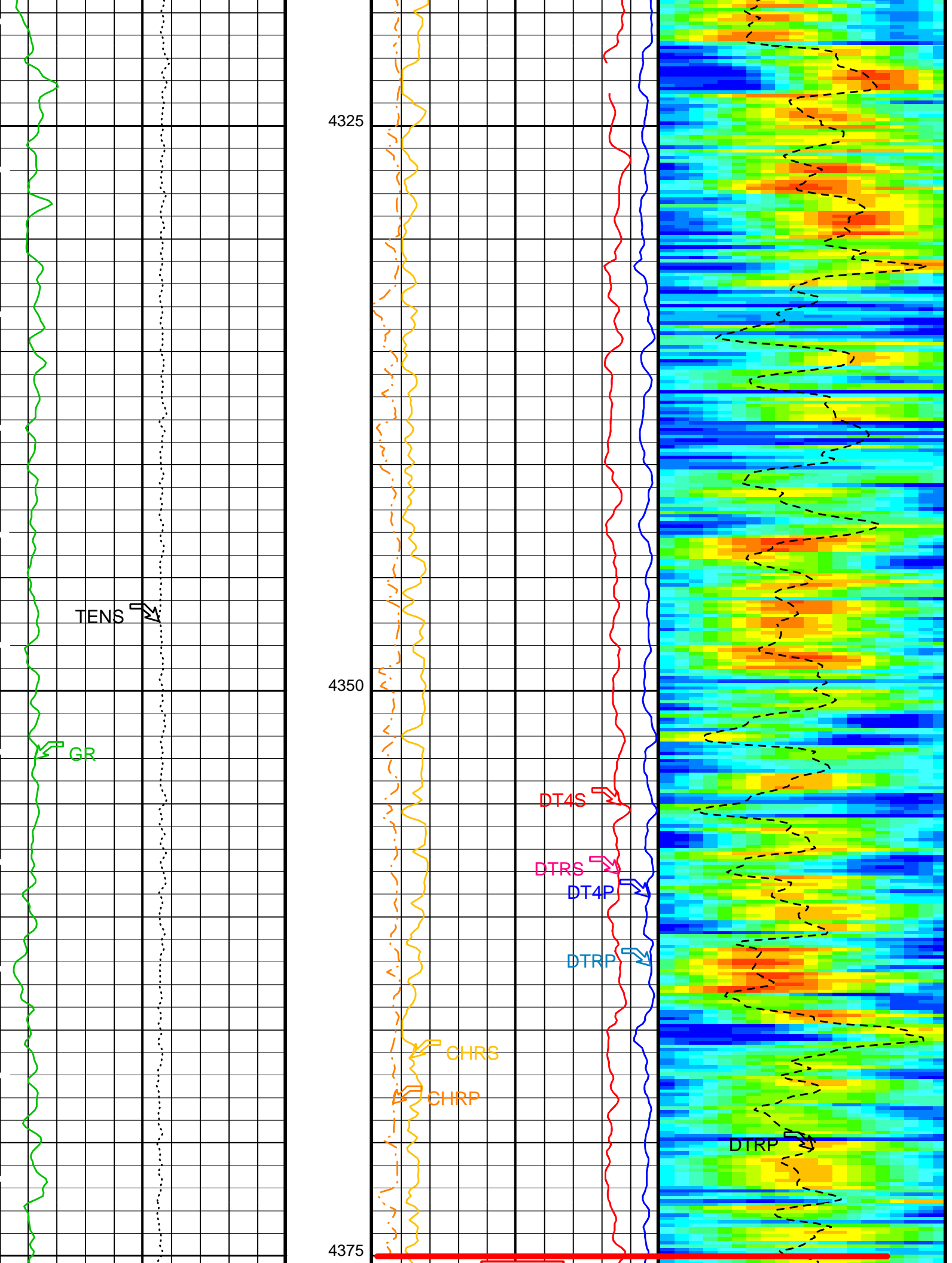


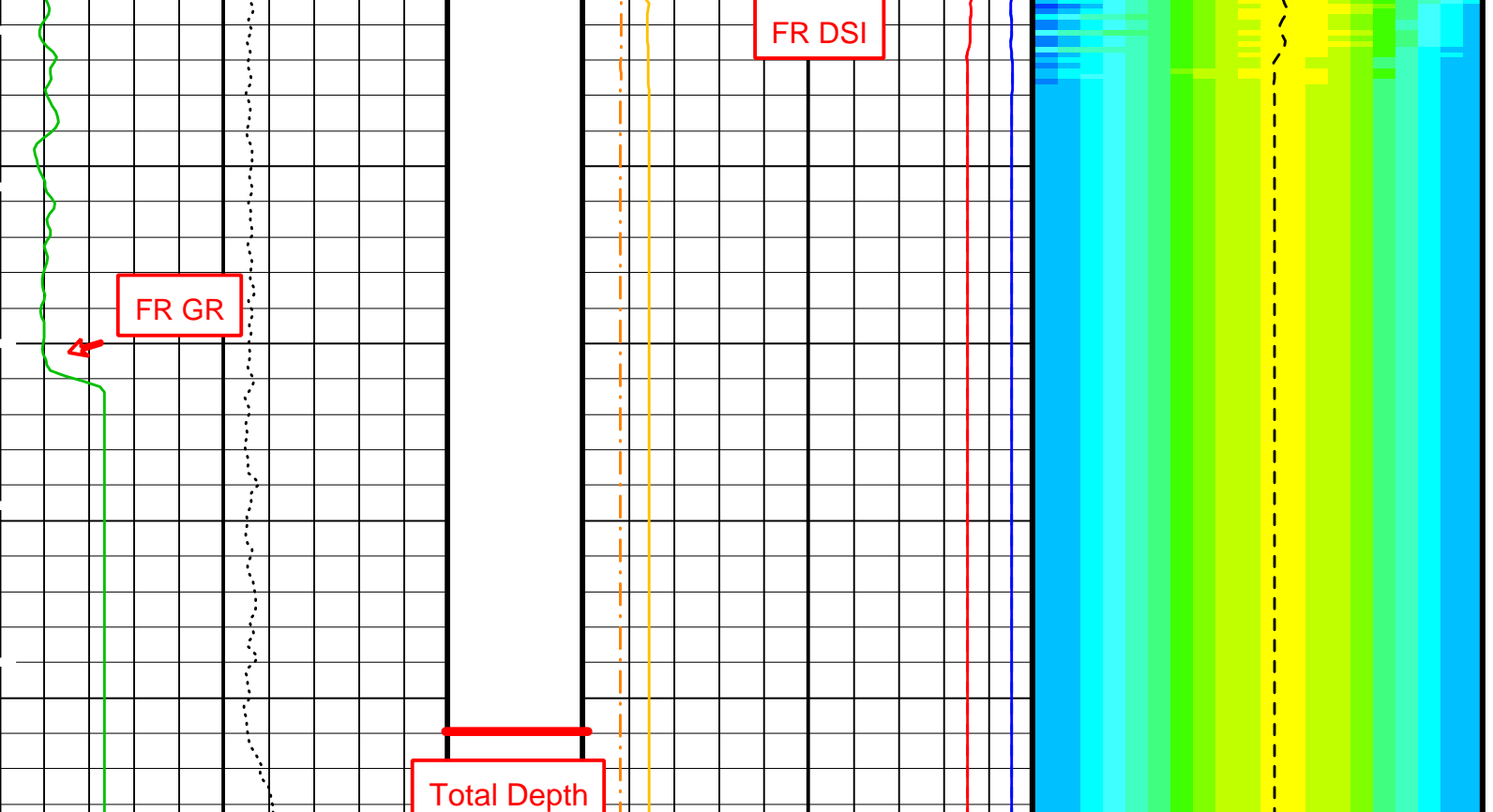












Gamma Ray (GR)	
0	50
(GAPI)	
Tension (TENS)	
10000	0
(LBF)	

Peak Coherence / RA - P & S Comp (CHRP)	
0	10
(---)	
Peak Coherence / RA - P & S Shear (CHRS)	
-1	9
(---)	
Delta-T Comp / RA - P & S (DTRP)	
440	40
(US/F)	
Delta-T Comp - P & S (DT4P)	
440	40
(US/F)	
Delta-T Shear / RA - P & S (DTRS)	
440	40
(US/F)	
Delta-T Shear - P & S (DT4S)	
440	40
(US/F)	

Delta-T Comp / RA - P & S (DTRP)	
40	80
(US/F)	
Min	Max
Amplitude	
Rec.Array P&S Slow Proj. CVDL (SPR4)	
40	80
(US/F)	

PIP SUMMARY

Time Mark Every 60 S

Parameters

DLIS Name	Description	Value
BHS	SGT-N: Scintillation Gamma-Ray - N Borehole Status	OPEN
BHS	DSST-B: Dipole Shear Imager - B Borehole Status	OPEN
CASF	Label Casing Function - Monopole P&S	50
COLL	Label Slowness Lower Limit - Monopole P&S Compressional	40 US/F
COUL	Label Slowness Upper Limit - Monopole P&S Compressional	80 US/F
DDE4	Digitizing Delay 4	0 US
DDEX	Digitizing Delay X	0 US
DSI4	Digitizer Sample Interval 4	10 US
DSIX	Digitizer Sample Interval X	10 US
DTF	Delta-T Fluid	189 US/F
DWC4	Digitizer Word Count 4	512
DWCX	Digitizer Word Count X	512
FILG	Label Fill Gap Control - Monopole P&S	COMP_SHEAR
LFC	Label Formation Character - Monopole P&S	COMP_FIRST
MCS	Mean Casing Slowness	57 US/F

MTXG	Mean Casing Slowness	37	US/F
NWI4	Monopole Transmitter Geometry	186	IN
RSMN	Number Waveform Items 4	8	
RSMX	Label Shear/Compressional Minimum Ratio - Monopole P&S	1.4	
RX1G	Label Shear/Compressional Maximum Ratio - Monopole P&S	2.12	
RX2G	Receiver 1 Geometry	294	IN
RX3G	Receiver 2 Geometry	300	IN
RX4G	Receiver 3 Geometry	306	IN
RX5G	Receiver 4 Geometry	312	IN
RX6G	Receiver 5 Geometry	318	IN
RX7G	Receiver 6 Geometry	324	IN
RX8G	Receiver 7 Geometry	330	IN
SAM4	Receiver 8 Geometry	336	IN
SAMX	DSST Sonic Acquisition Mode 4 - High Frequency Monopole Mode for P&S		
		MFD_ODD	
SAS4	DSST Sonic Acquisition Mode X - Both Dipoles or Monopole Mode for Expert	OFF	
SBO4	STC Sonic Array Status - Monopole P&S	255	
SBR4	STC Search Band Offset - Monopole P&S	500	US
SBW4	STC Baseline Removal - Monopole P&S	ON	
SFC4	STC Search Bandwidth - Monopole P&S	2000	US
SFM4	STC Formation Character - Monopole P&S	FAST	
SHLL	STC Filter - Monopole P&S	B3-12K	
SHUL	Label Slowness Lower Limit - Monopole P&S Shear	80	US/F
SLL4	Label Slowness Upper Limit - Monopole P&S Shear	120	US/F
SST4	STC Slowness Lower Limit - Monopole P&S	40	US/F
SSW4	STC Slowness Step - Monopole P&S	2	US/F
STLL	STC Source Waveform - Monopole P&S	WF_SAM4	
STUL	Label Slowness Lower Limit - Monopole Stoneley	180	US/F
SUL4	Label Slowness Upper Limit - Monopole Stoneley	780	US/F
SWD4	STC Slowness Upper Limit - Monopole P&S	240	US/F
TBF4	STC Slowness Width - Monopole P&S	10	US/F
TLL4	STC Time for Baseline Fill - Monopole P&S	300	US
TST4	STC Time Lower Limit - Monopole P&S	150	US
TUL4	STC Time Step - Monopole P&S	50	US
TWD4	STC Time Upper Limit - Monopole P&S	3660	US
TWI4	STC Time Width - Monopole P&S	1000	US
TWSX	STC Integration Time Window - Monopole P&S	500	US
	Transmitter Waveform Select X	0	
HOLEV:	Integrated Hole/Cement Volume		
BHS	Borehole Status	OPEN	
	System and Miscellaneous		
DO	Depth Offset for Playback	0.0	M
PP	Playback Processing	RECOMPUTE	

Format: DSST_P_S_VDL_COLOR Vertical Scale: 1:200 Graphics File Created: 31-Dec-2002 11:09

OP System Version: 10C0-306
MCM

SGT-N	10C0-306	DSST-B	OP10-KP1
DTC-H	10C0-306		

Input DLIS Files

DEFAULT	FMS_DSI_034LUP	FN:34	PRODUCER	28-Dec-2002 22:02	4398.3 M	3897.6 M
---------	----------------	-------	----------	-------------------	----------	----------

Output DLIS Files

DEFAULT	DSI_049PUP	FN:61	PRODUCER	31-Dec-2002 11:09		
---------	------------	-------	----------	-------------------	--	--

Company: Lamont Doherty
Well: ODP Leg 206, Site 1256D
Field: Fast Spreading Crust
Country: Coata Rica
Ocean: Pacific Ocean



Dipole Sonic/GR Log