

Company: Lamont Doherty

Well: ODP Leg 207 Site 1258C

Field: Demarara Rise

Country: Venezuela

Ocean: Atlantic

Long Spaced Sonic Gamma Ray

Country: Venezuela		Elev.: K.B. 11.3 m	
Field: Demarara Rise		G.L. -3203 m	
Location: 9.433 Deg North, 54.7327 Deg W		D.F. 11 m	
Well: ODP Leg 207 Site 1258C		Elev.: 0 m	
Company: Lamont Doherty		11.3 m above Perm. Datum	
LOCATION			
Permanent Datum: MSL			
Log Measured From: DES			
Drilling Measured From: DES			
API Serial No.	Max. Hole Devi.	Longitude	Latitude

Logging Date	31-Jan-2003		
Run Number	1		
Depth Driller	3688 m		
Schlumberger Depth	3683 m		
Bottom Log Interval	3667 m		
Top Log Interval	3281 m		
Casing Driller Size @ Depth	0.000 in @ 3283 m		
Casing Schlumberger	3281 m		
Bit Size	9.875 in		
Type Fluid In Hole	Sepolite Salt Water		
Density	1.1 g/cm3		
Fluid Loss	PH		
Source Of Sample	Mudpit		
RM @ Measured Temperature	0.258 ohm.m @ 32 degC		
RMF @ Measured Temperature	@ @		
RMC @ Measured Temperature	@ @		
Source RMF	RMC		
RM @ MRT	0.383 @ 15 @ 15		
Maximum Recorded Temperatures	15 degC		
Circulation Stopped	Time		
Logger On Bottom	31-Jan-2003 Time 21:13		
Unit Number	99 Location Houston, TX ODP		
Recorded By	K. Swain		
Witnessed By	B. Rea, F. Heidersdorf		

Logging Date	31-Jan-2003		
Run Number	1		
Depth Driller	3688 m		
Schlumberger Depth	3683 m		
Bottom Log Interval	3667 m		
Top Log Interval	3281 m		
Casing Driller Size @ Depth	0.000 in @ 3283 m		
Casing Schlumberger	3281 m		
Bit Size	9.875 in		
Type Fluid In Hole	Sepolite Salt Water		
Density	1.1 g/cm3		
Fluid Loss	PH		
Source Of Sample	Mudpit		
RM @ Measured Temperature	0.258 ohm.m @ 32 degC		
RMF @ Measured Temperature	@ @		
RMC @ Measured Temperature	@ @		
Source RMF	RMC		
RM @ MRT	0.383 @ 15 @ 15		
Maximum Recorded Temperatures	15 degC		
Circulation Stopped	Time		
Logger On Bottom	31-Jan-2003 Time 21:13		
Unit Number	99 Location Houston, TX ODP		
Recorded By	K. Swain		
Witnessed By	B. Rea, F. Heidersdorf		

DISCLAIMER

THE USE OF AND RELIANCE UPON THIS RECORDED-DATA BY THE HEREIN NAMED COMPANY (AND ANY OF ITS AFFILIATES, PARTNERS, REPRESENTATIVES, AGENTS, CONSULTANTS AND EMPLOYEES) IS SUBJECT TO THE TERMS AND CONDITIONS AGREED UPON BETWEEN SCHLUMBERGER AND THE COMPANY, INCLUDING: (a) RESTRICTIONS ON USE OF THE RECORDED-DATA; (b) DISCLAIMERS AND WAIVERS OF WARRANTIES AND REPRESENTATIONS REGARDING COMPANY'S USE OF AND RELIANCE UPON THE RECORDED-DATA; AND (c) CUSTOMER'S FULL AND SOLE RESPONSIBILITY FOR ANY INFERENCE DRAWN OR DECISION MADE IN CONNECTION WITH THE USE OF THIS RECORDED-DATA.



OTHER SERVICES1 OS1: HNGS OS2: HLDS/APS/DITE OS3: FMS OS4: OS5:	OTHER SERVICES2 OS1: OS2: OS3: OS4: OS5:
--	---

REMARKS: RUN NUMBER 1 Hole cored with RCB, 9 7/8 bit. Driller Sea Floor at:3203 mbrf. Log measured in meters below rig floor. Lamont TAP tool run at bottom of DITE for temperature/pressure data. Wireline heave compensator used on all runs. Sepiolite mud was used to displace the hole. Driller TD= 3688 mbrf. Schlumberger TD= 3683 mbrf. Drill pipe Schlumberger= 3281 mbrf.	REMARKS: RUN NUMBER 2
--	-----------------------

RUN 1			RUN 2		
SERVICE ORDER #:			SERVICE ORDER #:		
PROGRAM VERSION:	10C0-306		PROGRAM VERSION:		
FLUID LEVEL:			FLUID LEVEL:		
LOGGED INTERVAL	START	STOP	LOGGED INTERVAL	START	STOP

EQUIPMENT DESCRIPTION

RUN 1		RUN 2	
SURFACE EQUIPMENT			
GSR-U/Y WITM (DTS)-A			

DOWNHOLE EQUIPMENT			
LEH-QT		24.05	
LEH-QT			
DTC-H	CTEM	22.88	23.16
ECH-KC 9841	TelStatus		
DTCH0-A 8764	ToolStatu	22.25	
AH-MCD-Upper		22.25	

AH-MCD-Upper 2

DSLTT-FTB

DSLCT-B 8200
ECH-KH 8251
SLS-ZA 674

19.96

ULF 16.44
LLF ULN 16.14
LLN 15.83

DSLTT Aux. 12.71

SGT-N

SGH-K 2450
SGC-TB 9585
SGD-TAA

Gamma Ray 12.43 12.71

AH-MCD-Lower

AH-MCD-Lower 1

11.03

DTA-A

ECH-KE 8455
DTA-A 8261

8.90

MEST-B

MEAH-B 701
MEAC-A 833
MEPH-A 702
GPIC-A 719
MEPC-AB
MEDS-B 771

7.68

MEDR MEAC 0.46
MEPC MEDS-B
HV DF
Tension GPIT 0.00

TOOL ZERO

MAXIMUM STRING DIAMETER 4.50 IN
MEASUREMENTS RELATIVE TO TOOL ZERO
ALL LENGTHS IN METERS

Output DLIS Files

DEFAULT	FMS_SONIC_011LUP	FN:15	PRODUCER	31-Jan-2003 21:13	3687.3 M	3280.3 M
REDUCED	FMS_SONIC_011LUP	FN:16	PRODUCER	31-Jan-2003 21:13	3687.3 M	3280.3 M

OP System Version: 10C0-306

MCM

MEST-B	10C0-306	DTA-A	10C0-306
SGT-N	10C0-306	DSL-FTB	OP10-KP1
DTC-H	10C0-306		

Changed Parameter Summary

DLIS Name	New Value	Previous Value	Depth & Time
MGAI	80	60	3618.7 21:36:50
NMSG	481 US	390 US	3628.1 21:34:54
SGDT	532 US	481 US	3628.0 21:34:56
	86 US/F	55 US/F	3606.3 21:39:35
	156 US/F	86 US/F	3605.8 21:39:41
SLEV	3228	4000	3649.9 21:30:17
	3152	3228	3556.4 21:50:02

PIP SUMMARY

Time Mark Every 60 S

Transit Time 4 (TT4)		
1200	(US)	200
Transit Time 3 (TT3)		
1200	(US)	200
Transit Time 2 (TT2)		
1200	(US)	200
Transit Time 1 (TT1)		
1200	(US)	200
Sonic Velocity (SVEL)		
1000	(M/S)	6000

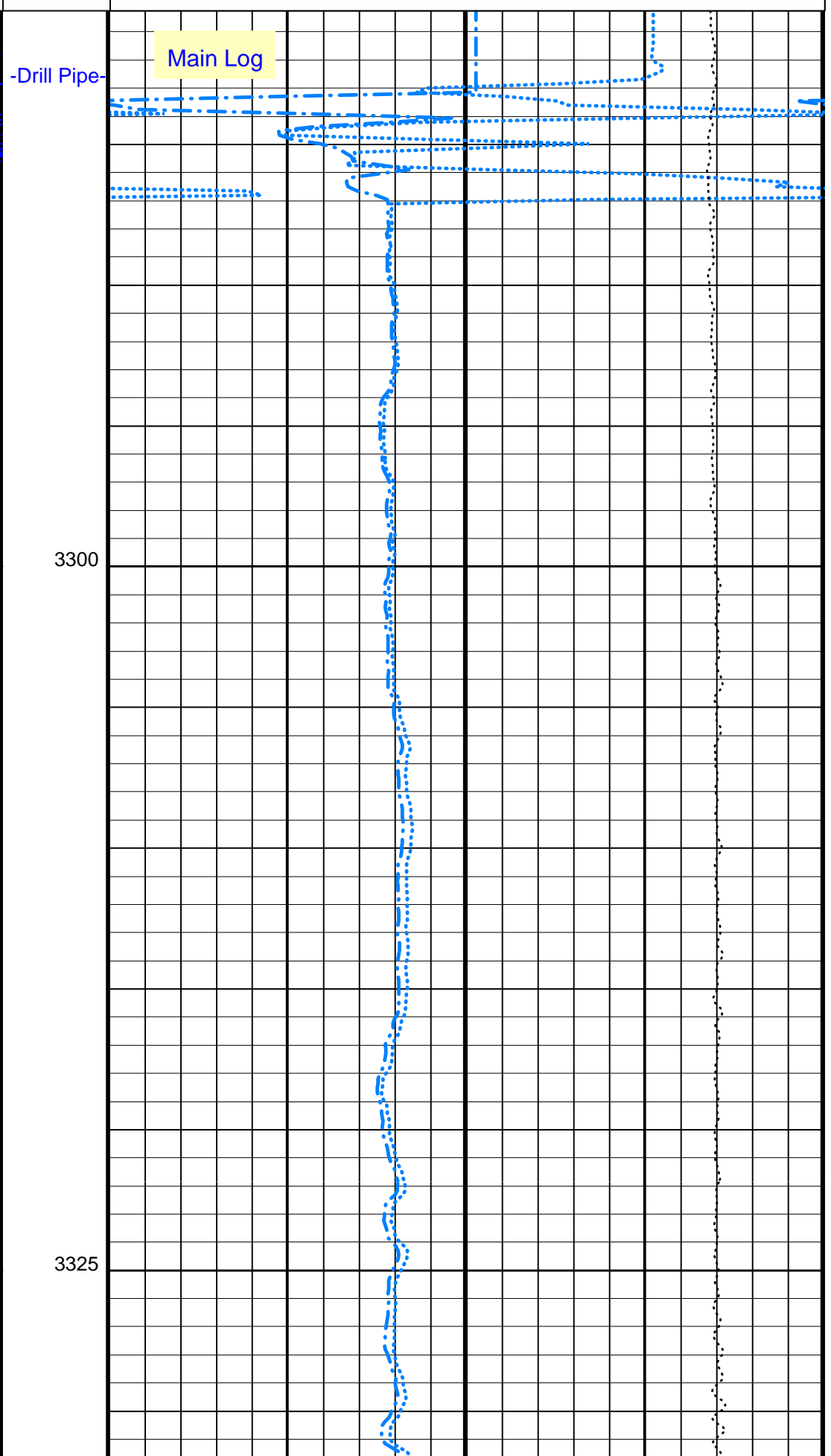
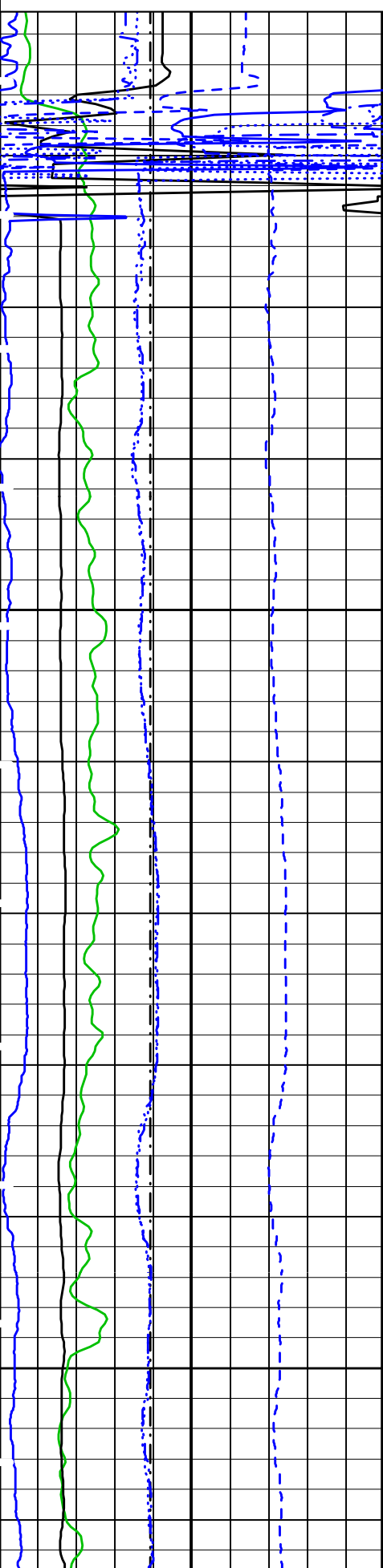
Tension (TENS)		
10000	(LBF)	0

Gamma Ray (GR) (GAPI) 0 150

Bit Size (BS) (IN) 6 16

Delta-T Long Spacing Far (DTLF) (US/F) 250 50

Delta-T Long Spacing Near (DTLN) (US/F) 250 50

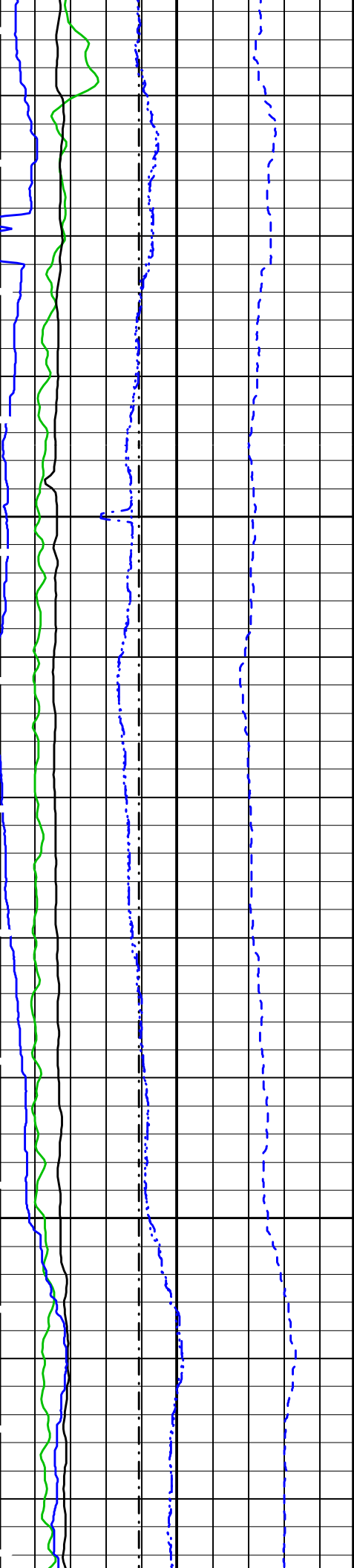


-Drill Pipe-

Main Log

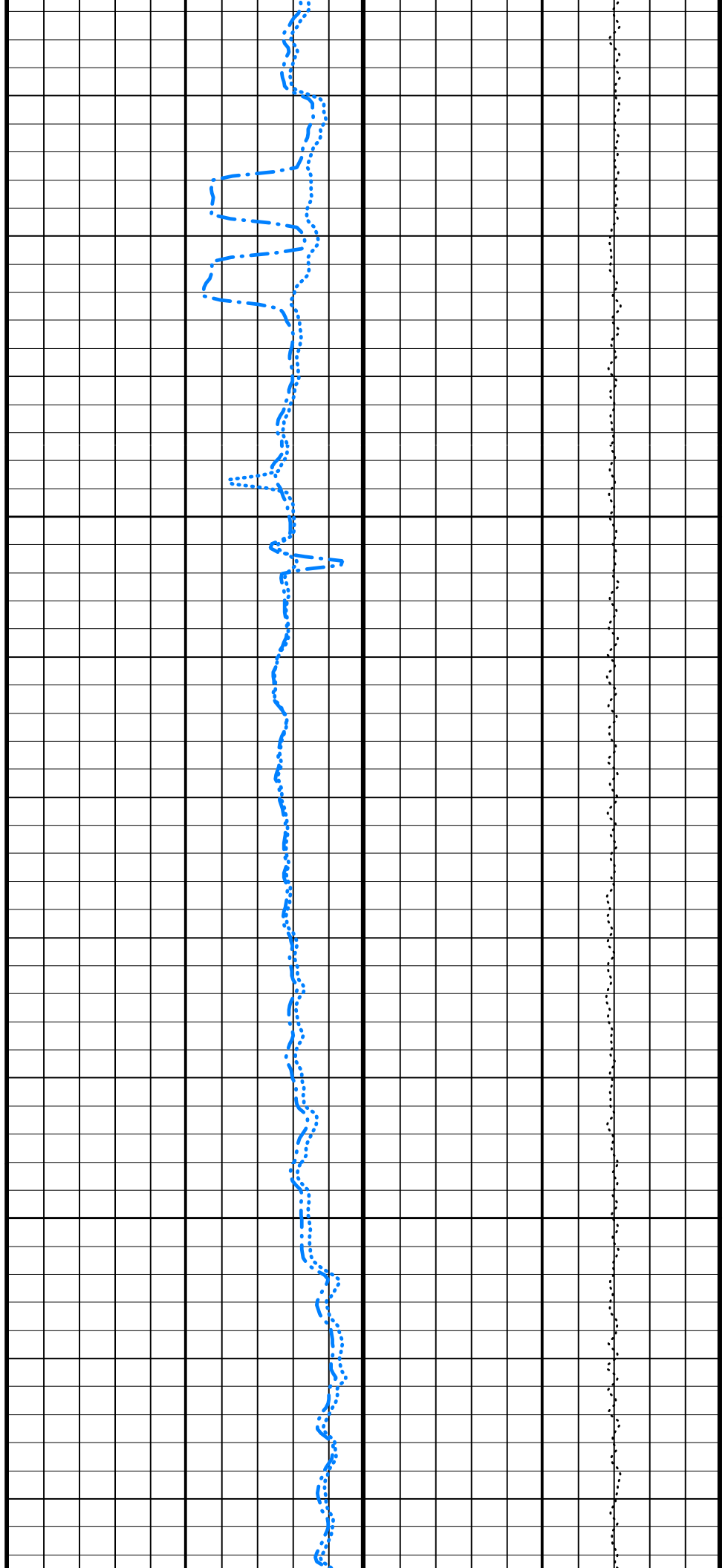
3300

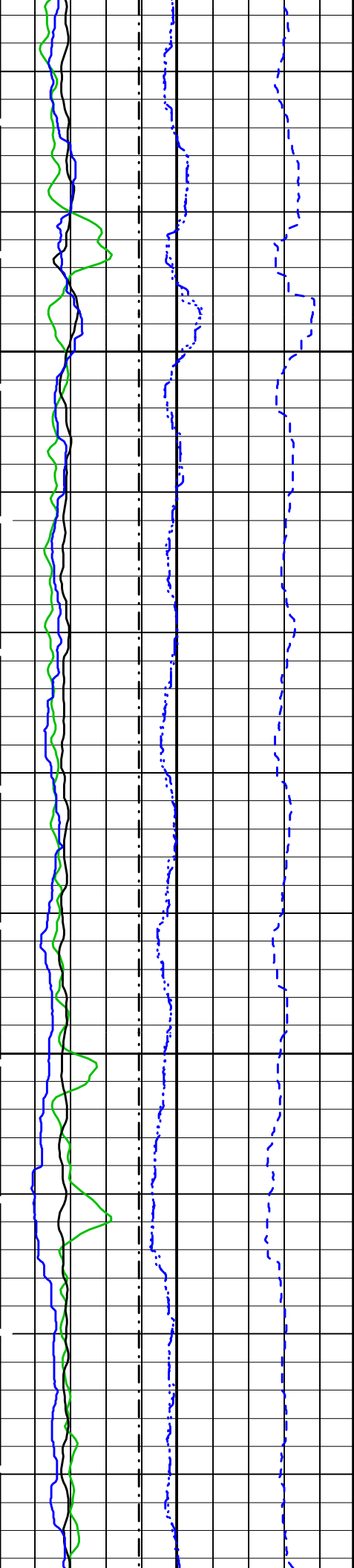
3325



3350

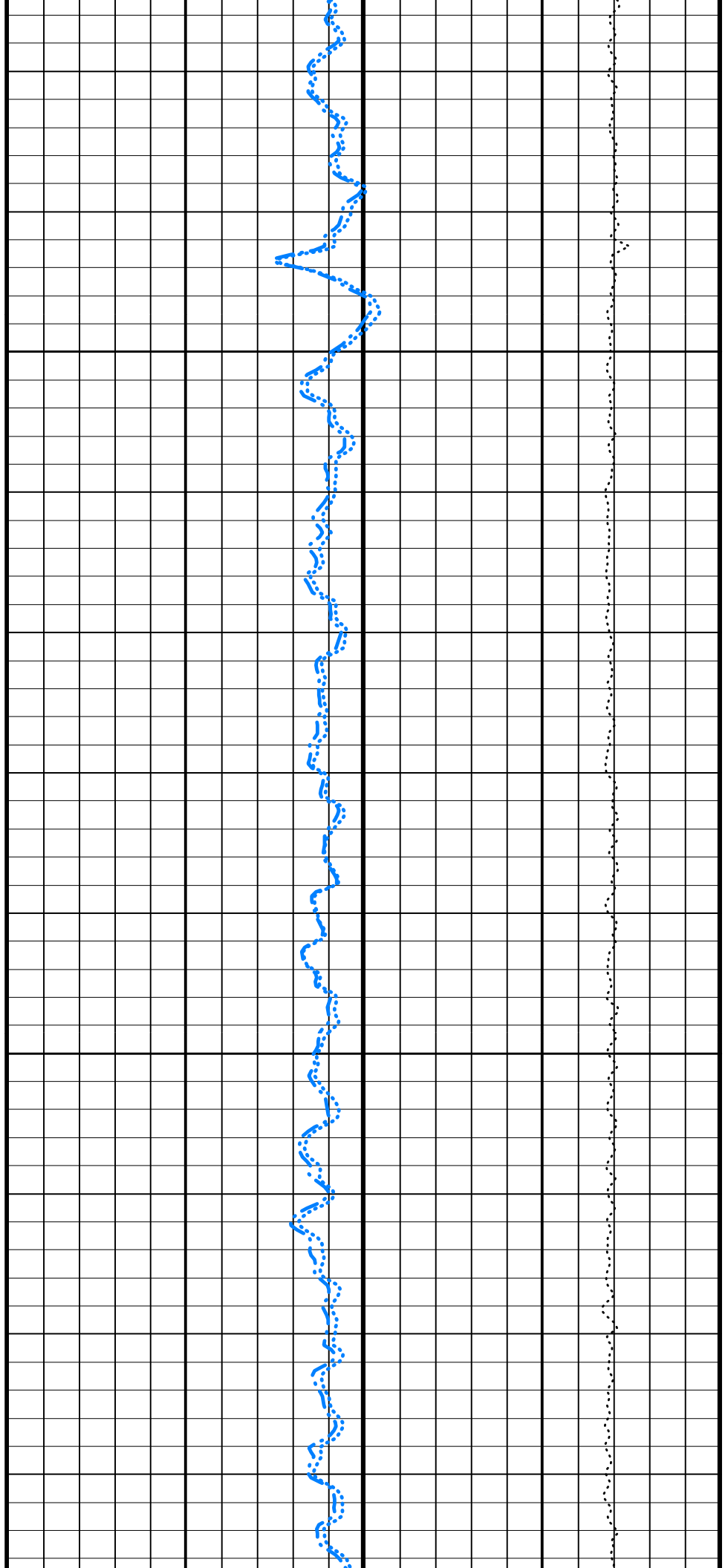
3375

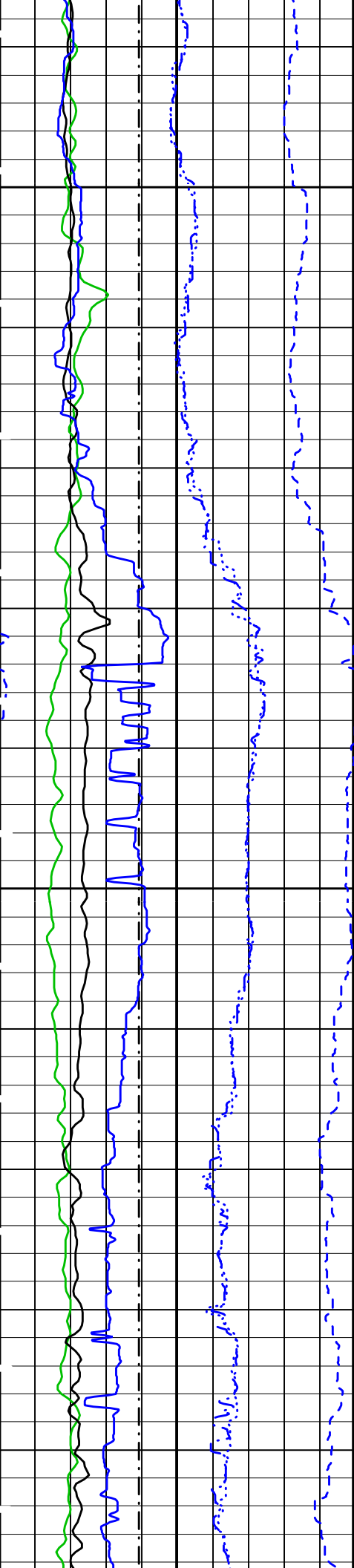




3400

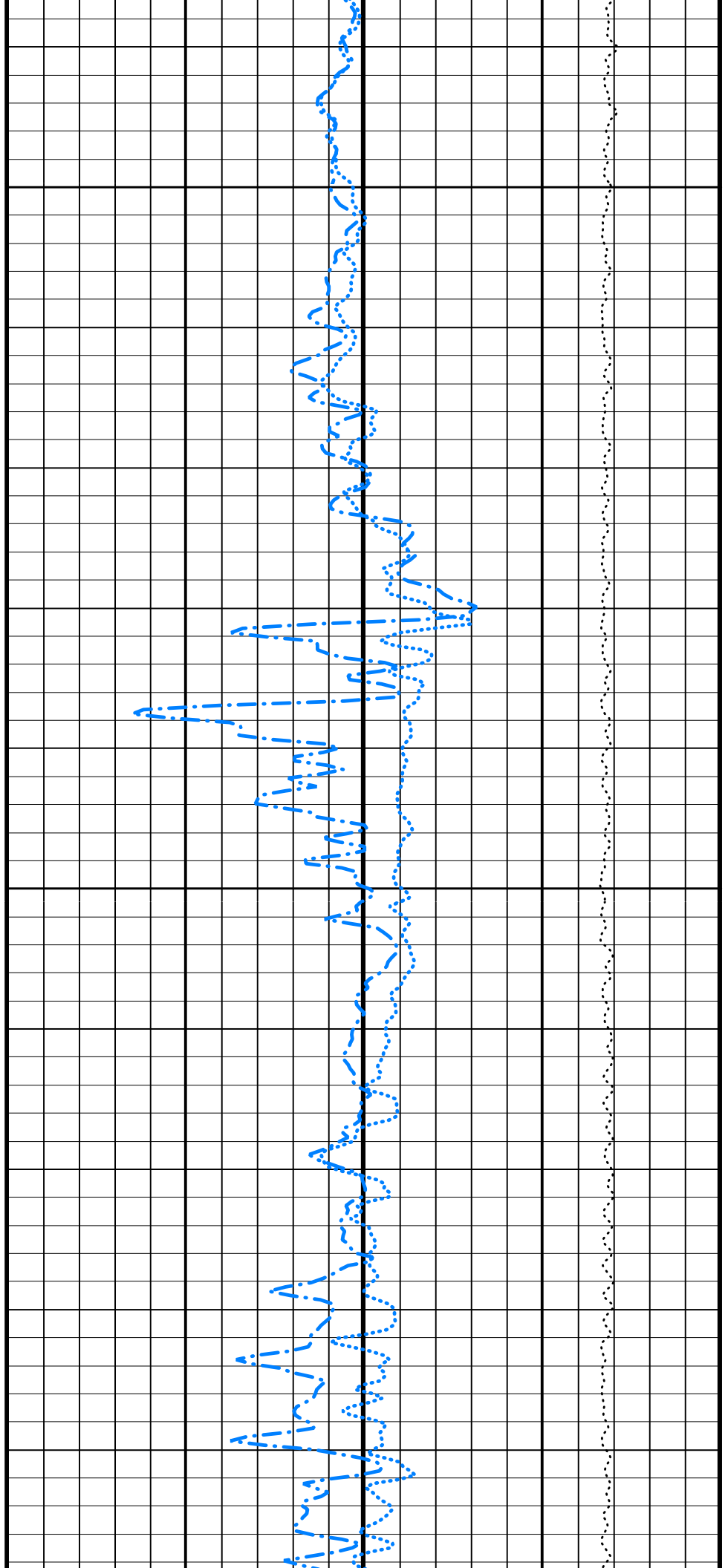
3425

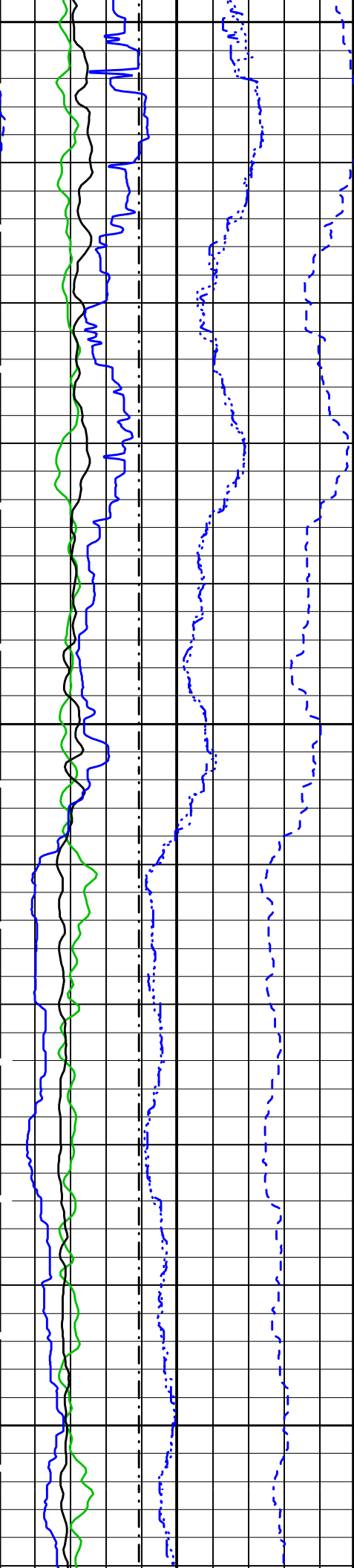




3450

3475

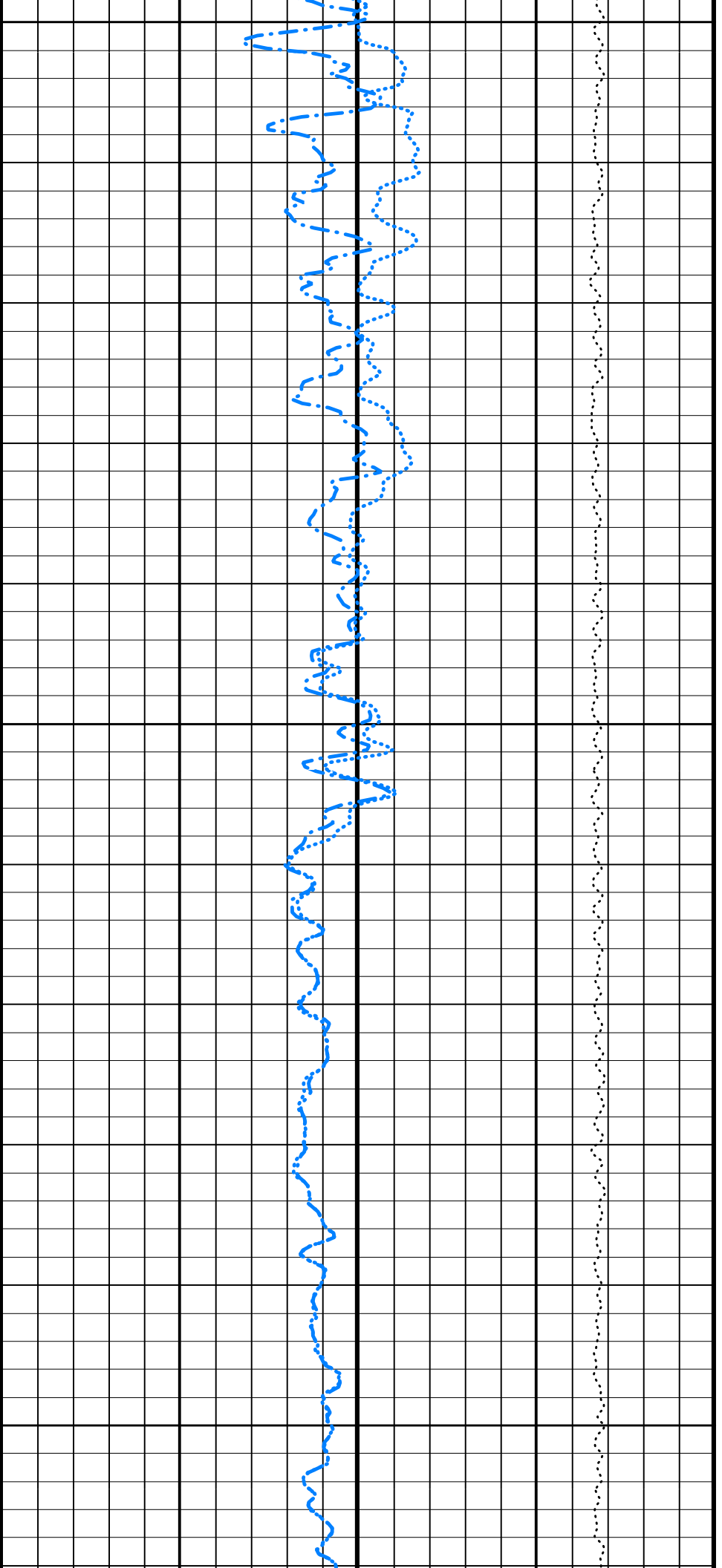


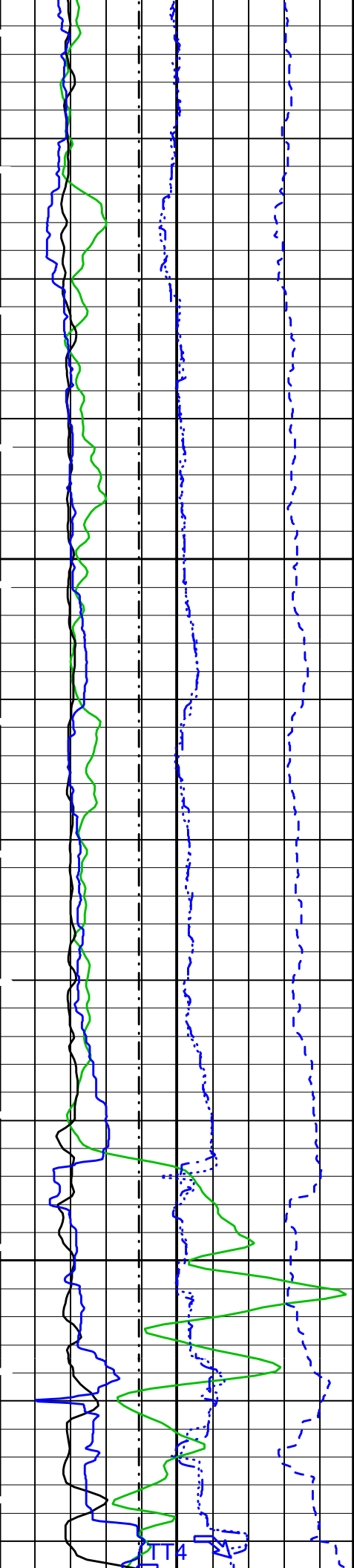


3500

3525

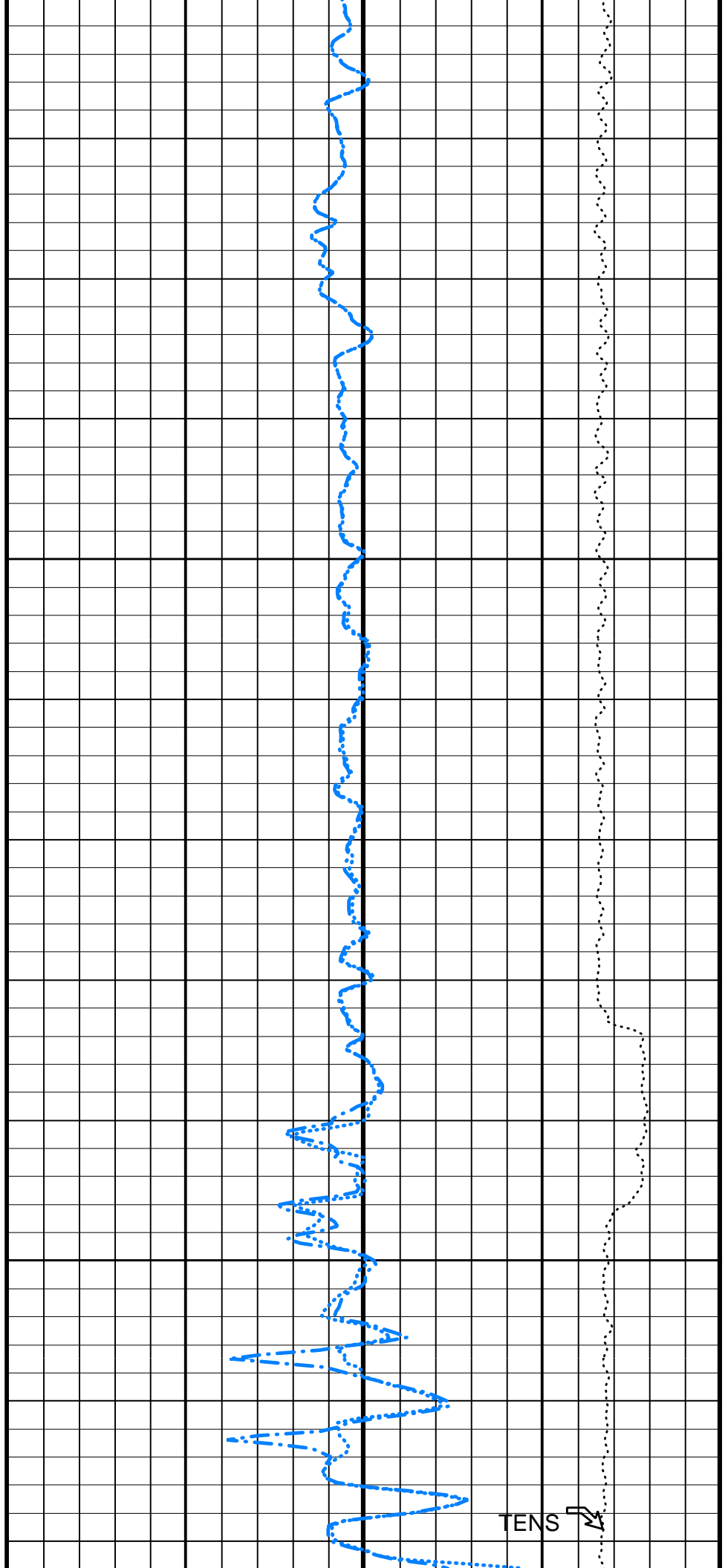
3550

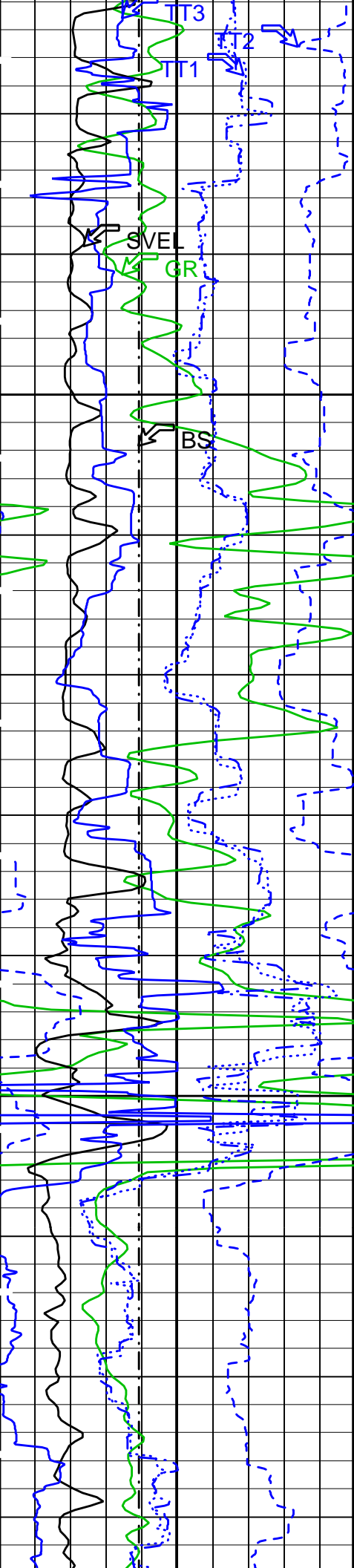




3575

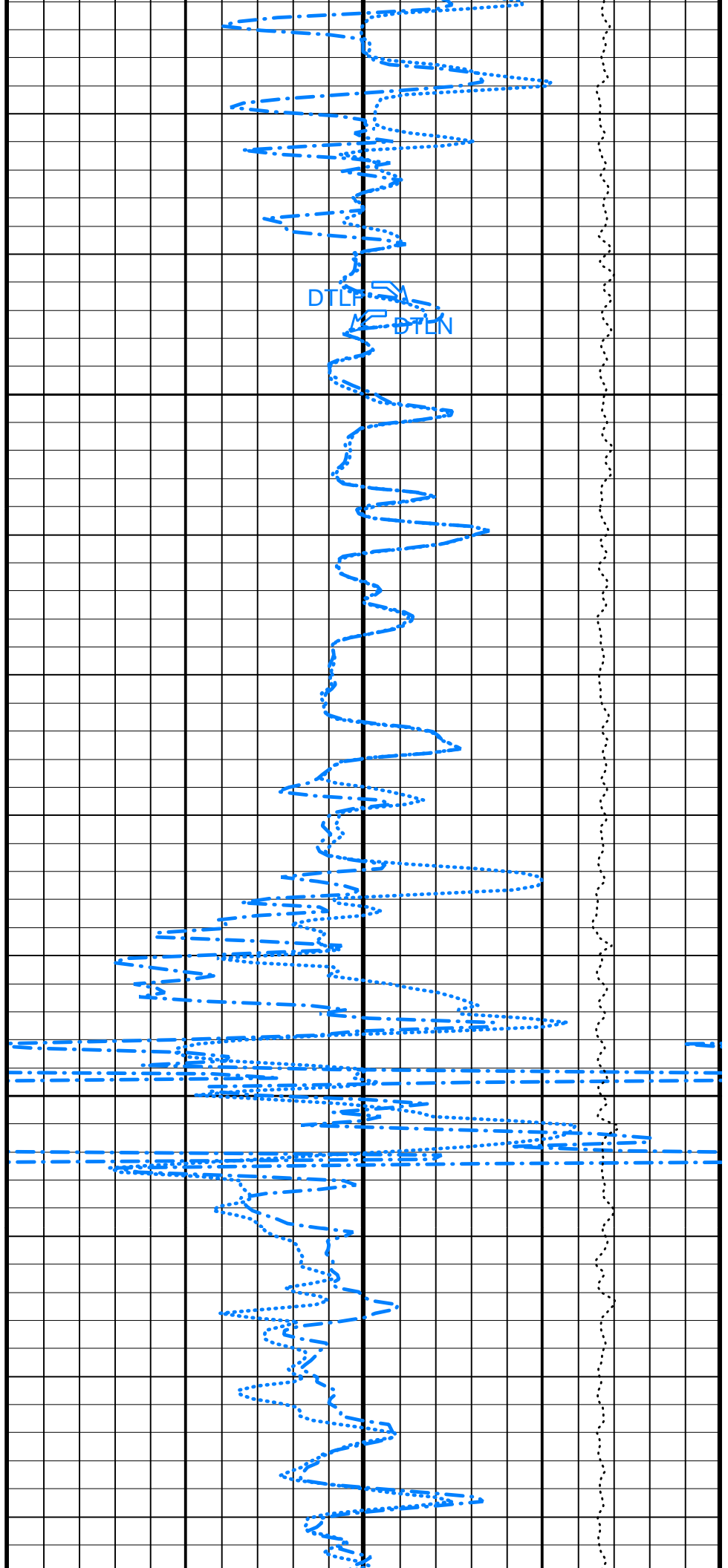
3600

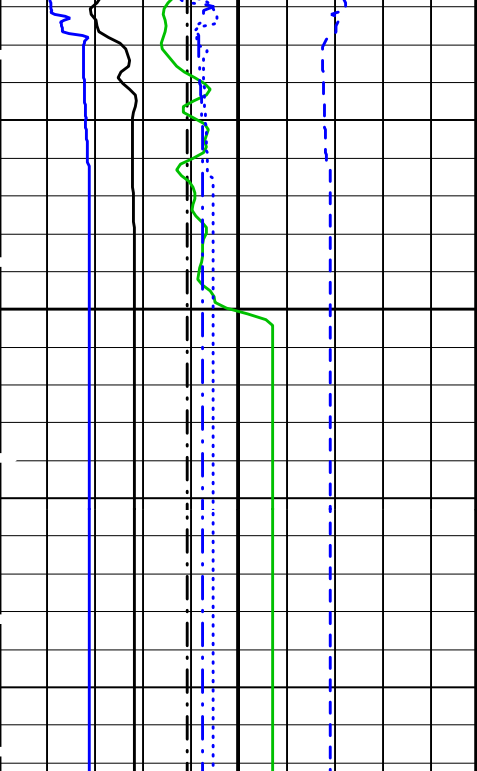




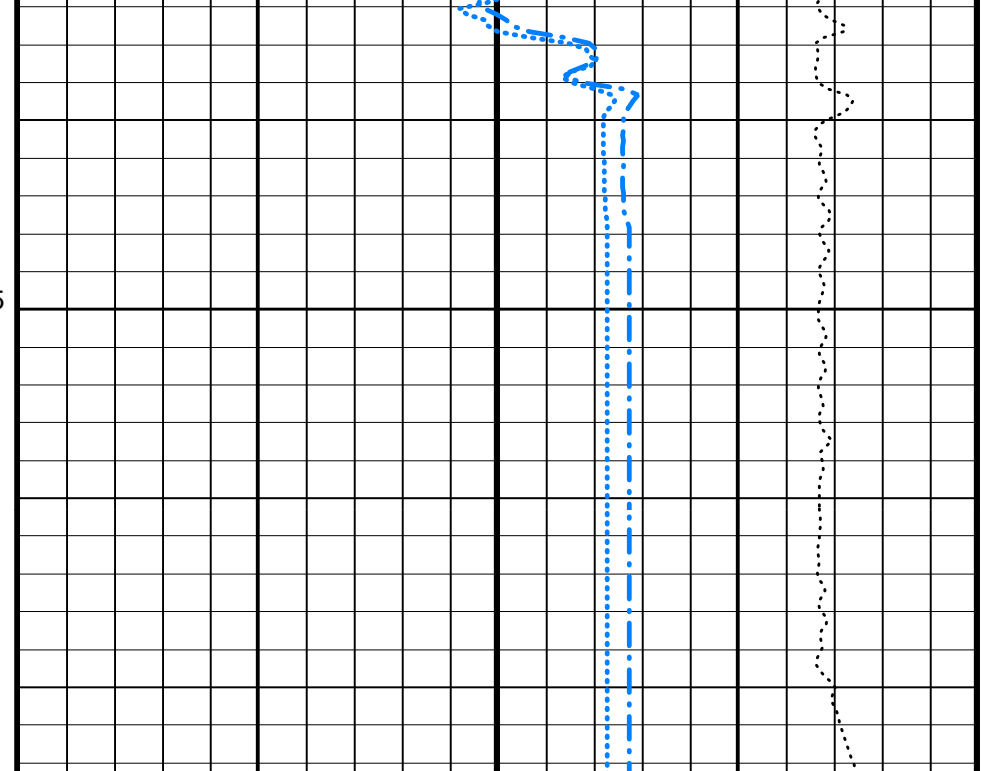
3625

3650





FR LSS-
-FR GR
3675
-TD-



6	Bit Size (BS) (IN)	16
0	Gamma Ray (GR) (GAPI)	150
1000	Sonic Velocity (SVEL) (M/S)	6000
1200	Transit Time 1 (TT1) (US)	200
1200	Transit Time 2 (TT2) (US)	200
1200	Transit Time 3 (TT3) (US)	200
1200	Transit Time 4 (TT4) (US)	200

250	Delta-T Long Spacing Near (DTLN) (US/F)	50
250	Delta-T Long Spacing Far (DTLF) (US/F)	50

Main Log

10000	Tension (TENS) (LBF)	0
-------	-------------------------	---

PIP SUMMARY

Time Mark Every 60 S

Parameters

DLIS Name	Description	Value
DSLT-FTB	Digitizing Sonic Logging Tool	
	DSLT Firing Mode	LDDB
	Telemetry Mode	DSLCLFTB
DDEL	Digitizing Delay	0 US
DFAD_TYPE	DFAD type	DFAD2
DIVL	DSLT Depth Sampling Interval	20
DRCS	DSLT DLIS Recording Size	250
DSIN	Digitizing Sample Interval	10
DTFS	DSLCL Telemetry Frame Size	536
DWCO	Digitizing Word Count	250
GAI	Manual Gain	40
MAHTR	Manual High Threshold Reference	40
MGAI	Maximum Gain	60
MNHTR	Minimum High Threshold Reference	30
NMSG	Near Minimum Sliding Gate	390 US
NMXG	Near Maximum Sliding Gate	2190 US
RATE	Firing Rate	R15
SFAF	Sonic Formation Attenuation Factor	16 DB/M
SGCL	Sliding Gate Closing Delta-T	200 US/F
SGDT	Sliding Gate Delta-T	55 US/F

SGDT	Sliding Gate Delta	35	US
SGW	Sliding Gate Width	140	US
SLEV	Signal Level for AGC	4000	
WAGC	Waveform AGC Allow/Disallow	OFF	
WMOD	Waveform Firing Mode	FULL	
BS	System and Miscellaneous Bit Size	9.875	IN

Format: SONI Vertical Scale: 1:200 Graphics File Created: 31-Jan-2003 21:13

OP System Version: 10C0-306			
MCM			
MEST-B	10C0-306	DTA-A	10C0-306
SGT-N	10C0-306	DSL-FTB	OP10-KP1
DTC-H	10C0-306		

Output DLIS Files					
DEFAULT	FMS_SONIC_011LUP	FN:15	PRODUCER	31-Jan-2003 21:13	
REDUCED	FMS_SONIC_011LUP	FN:16	PRODUCER	31-Jan-2003 21:13	

Output DLIS Files					
DEFAULT	FMS_SONIC_013LUP	FN:19	PRODUCER	31-Jan-2003 23:26	3686.9 M 3247.2 M
REDUCED	FMS_SONIC_013LUP	FN:20	PRODUCER	31-Jan-2003 23:26	3686.9 M 3247.1 M

OP System Version: 10C0-306			
MCM			
MEST-B	10C0-306	DTA-A	10C0-306
SGT-N	10C0-306	DSL-FTB	OP10-KP1
DTC-H	10C0-306		

Changed Parameter Summary			
DLIS Name	New Value	Previous Value	Depth & Time
MAHTR	218	40	3657.2 23:32:21
	207	218	3657.2 23:32:27
	50	207	3657.2 23:32:46
	25	50	3657.2 23:33:10
	16	25	3657.2 23:33:14
	22	16	3657.2 23:33:16
	5335	22	3262.6 00:18:11
MNHTR	15974	5335	3258.3 00:18:40
	15974	15974	3257.9 00:18:43
	52	30	3483.1 23:53:49
NMSG	2014	52	3257.3 00:18:47
	474 US	390 US	3264.3 00:17:59
NMKG	1154 US	2190 US	3266.1 00:17:47
	749 US	1154 US	3265.8 00:17:49
SGCL	73 US/F	200 US/F	3265.3 00:17:52
	67 US/F	73 US/F	3265.1 00:17:54
SGDT	67 US/F	55 US/F	3264.8 00:17:56

PIP SUMMARY

Time Mark Every 60 S

Transit Time 4 (TT4)		
1200	(US)	200
Transit Time 3 (TT3)		
1200	(US)	200
Transit Time 2 (TT2)		
1200	(US)	200
Transit Time 1 (TT1)		
1200	(US)	200
Sonic Velocity (SVEL)		
1000	(M/S)	6000
Gamma Ray (GR)		

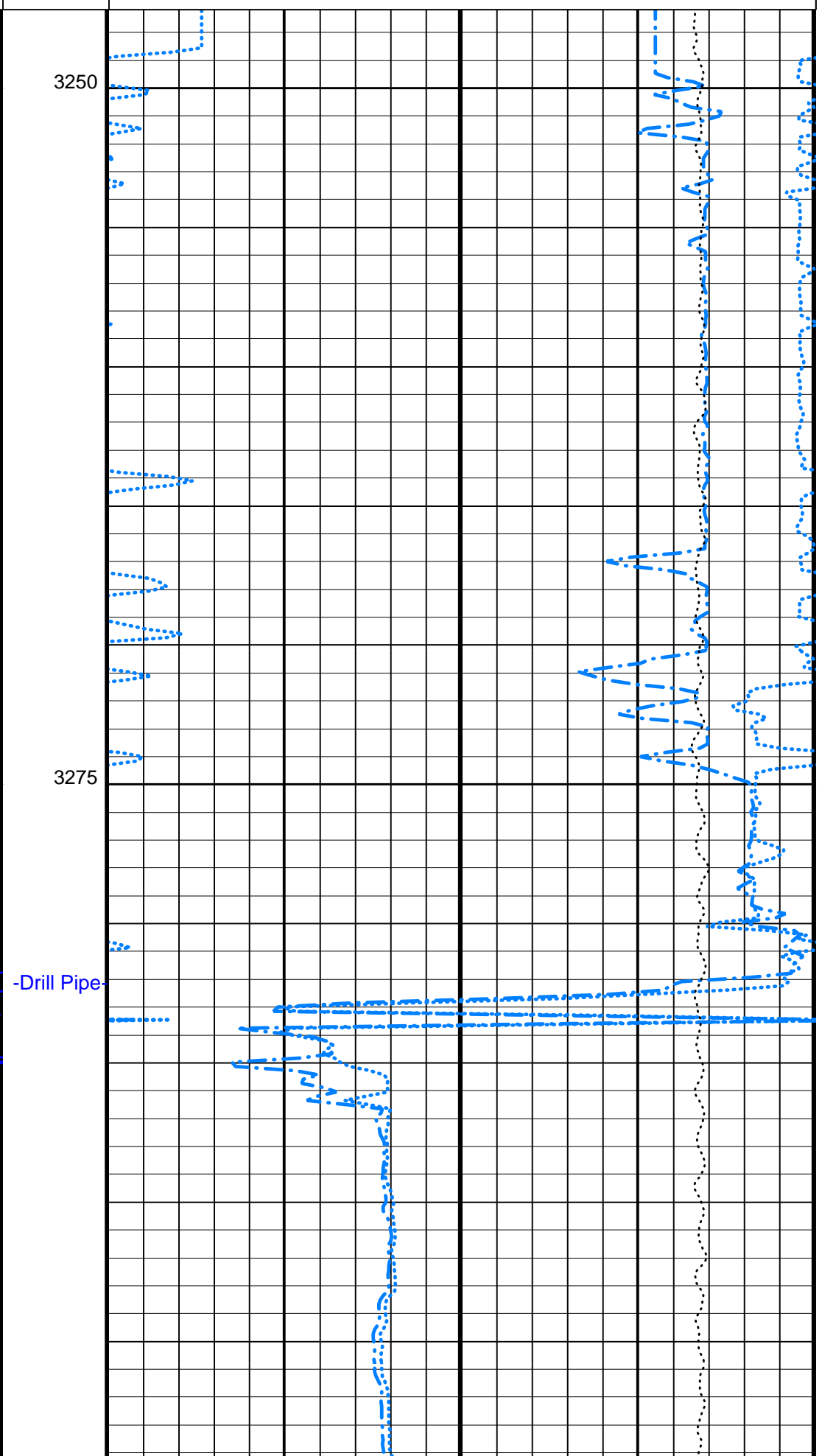
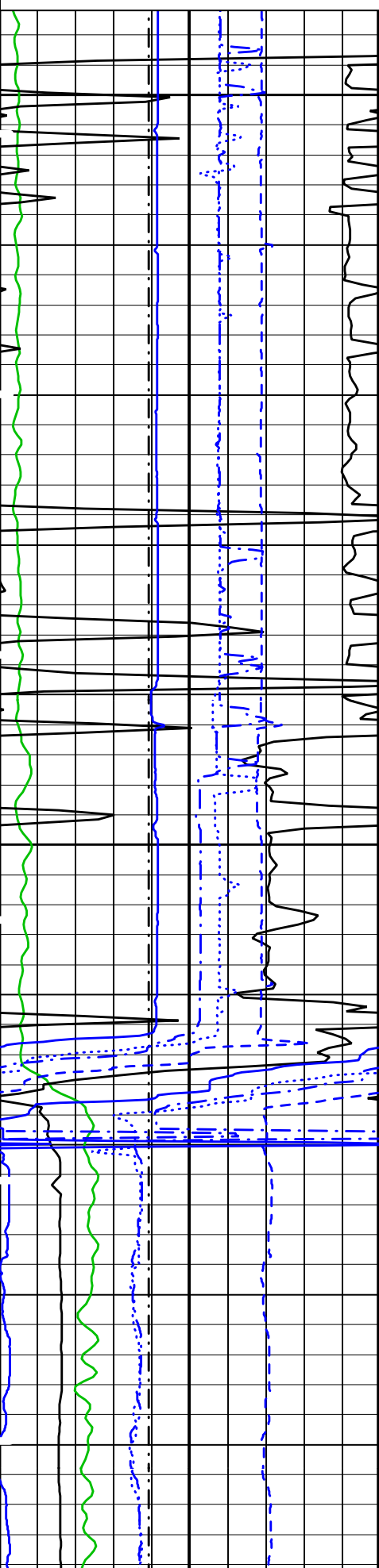
Pass #2, Repeat Section

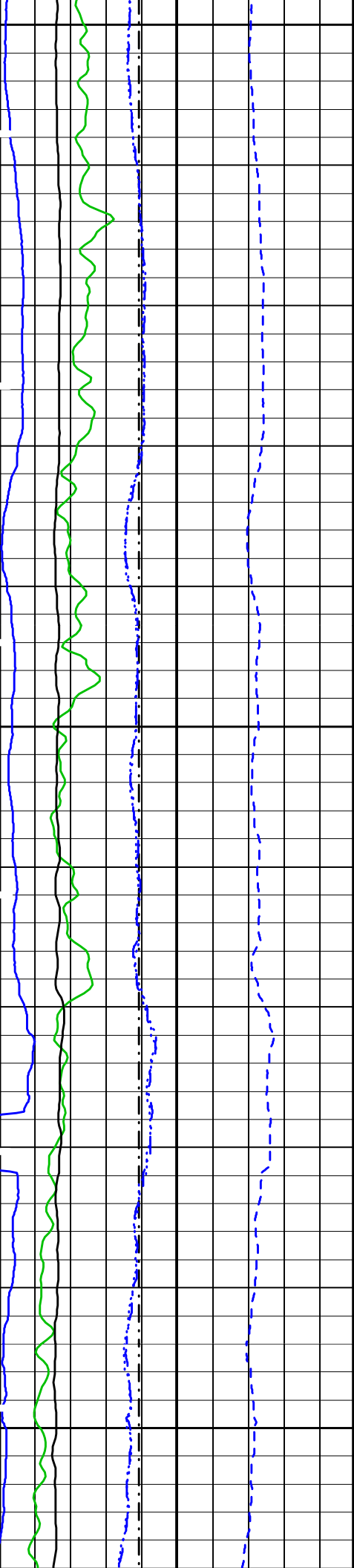
Tension (TENS)	
10000	(LBF)
	0

Delta-T Long Spacing Far (DTLF)

0 (GAPI) 150
Bit Size (BS)
(IN) 6 16

250 (US/F) 50
Delta-T Long Spacing Near (DTLN)
(US/F) 250 50

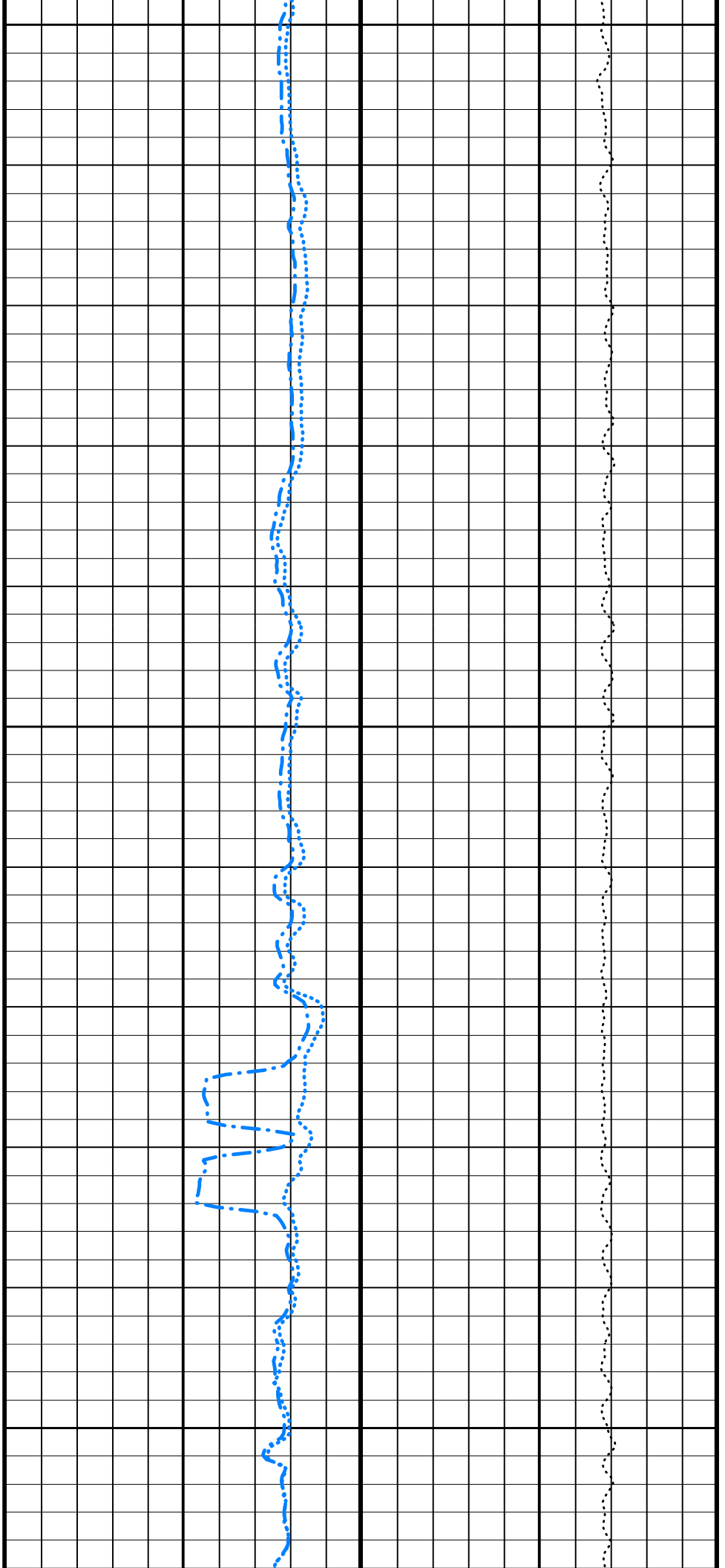


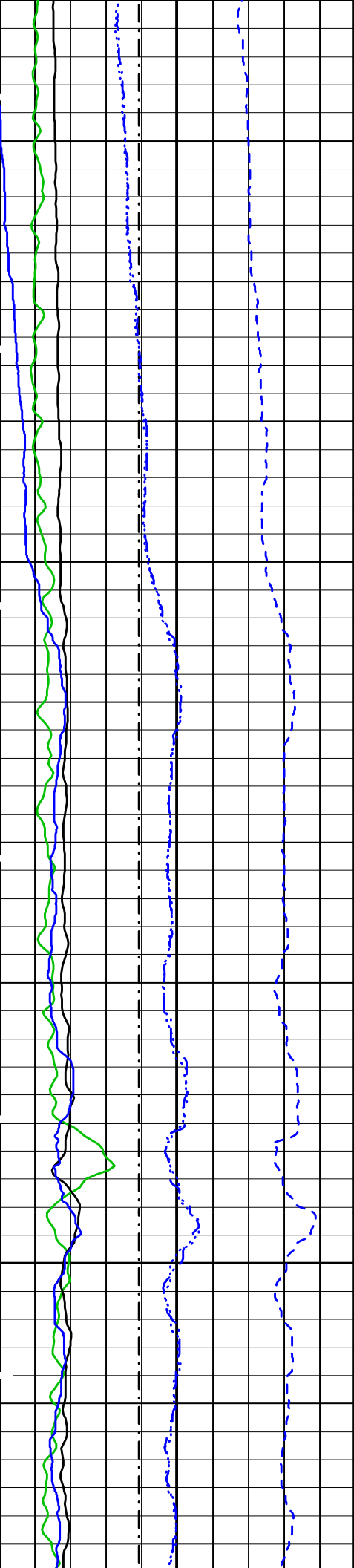


3300

3325

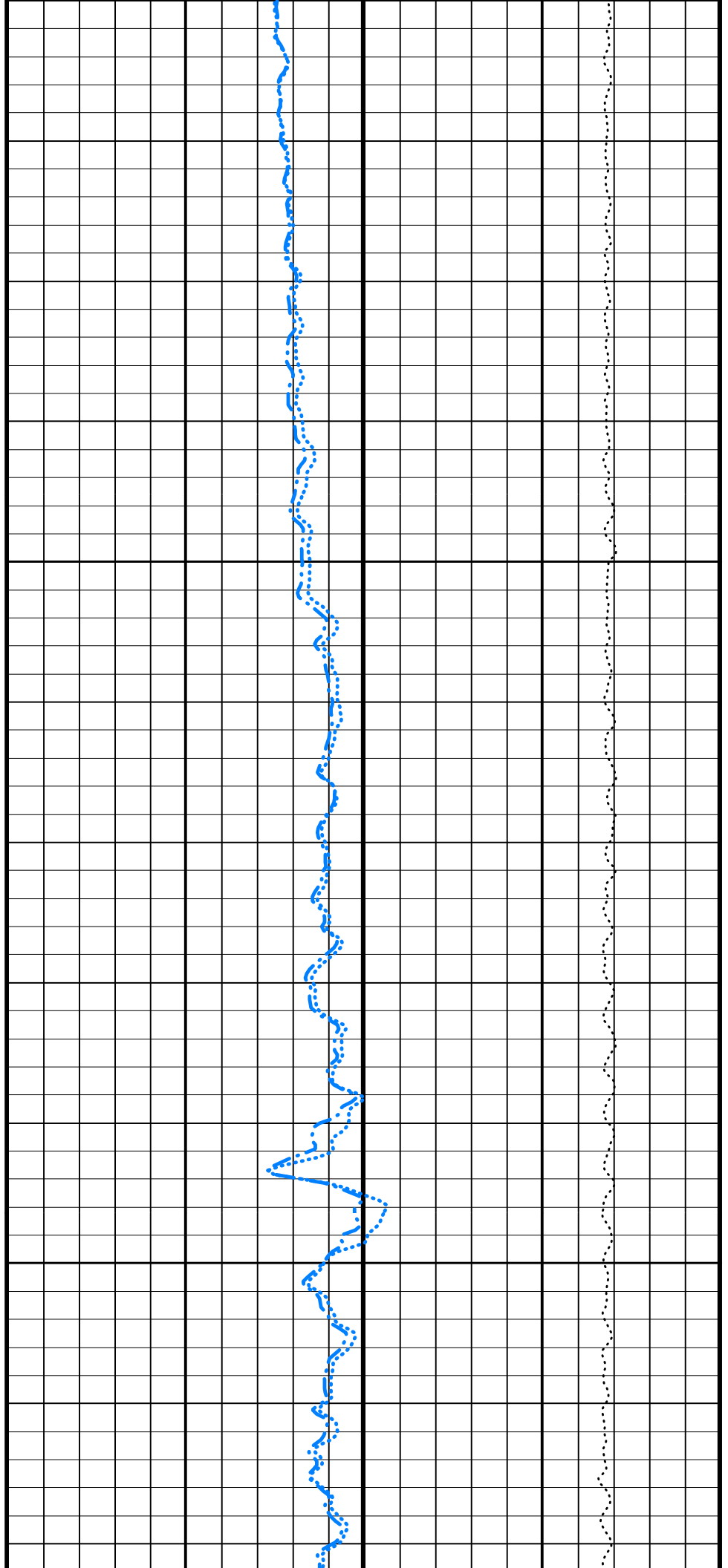
3350

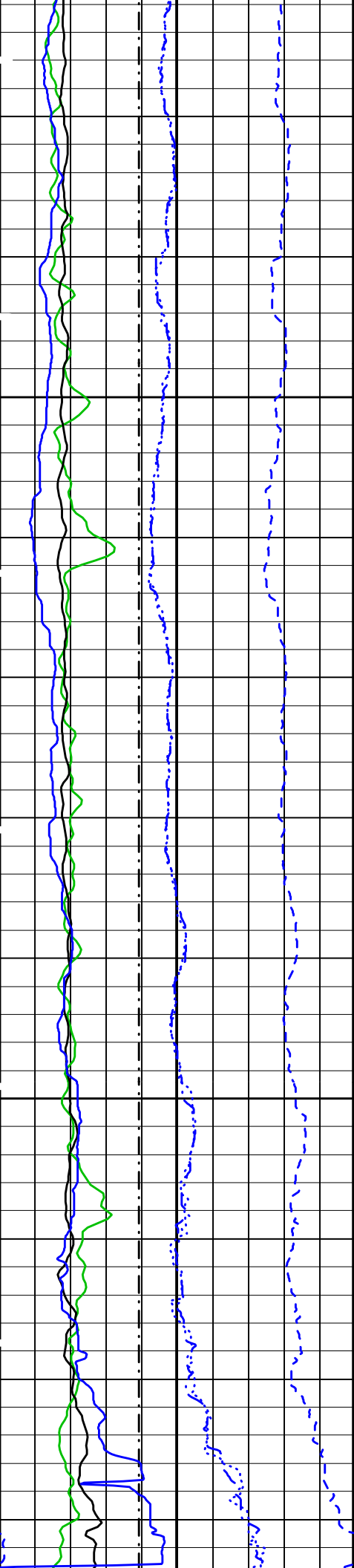




3375

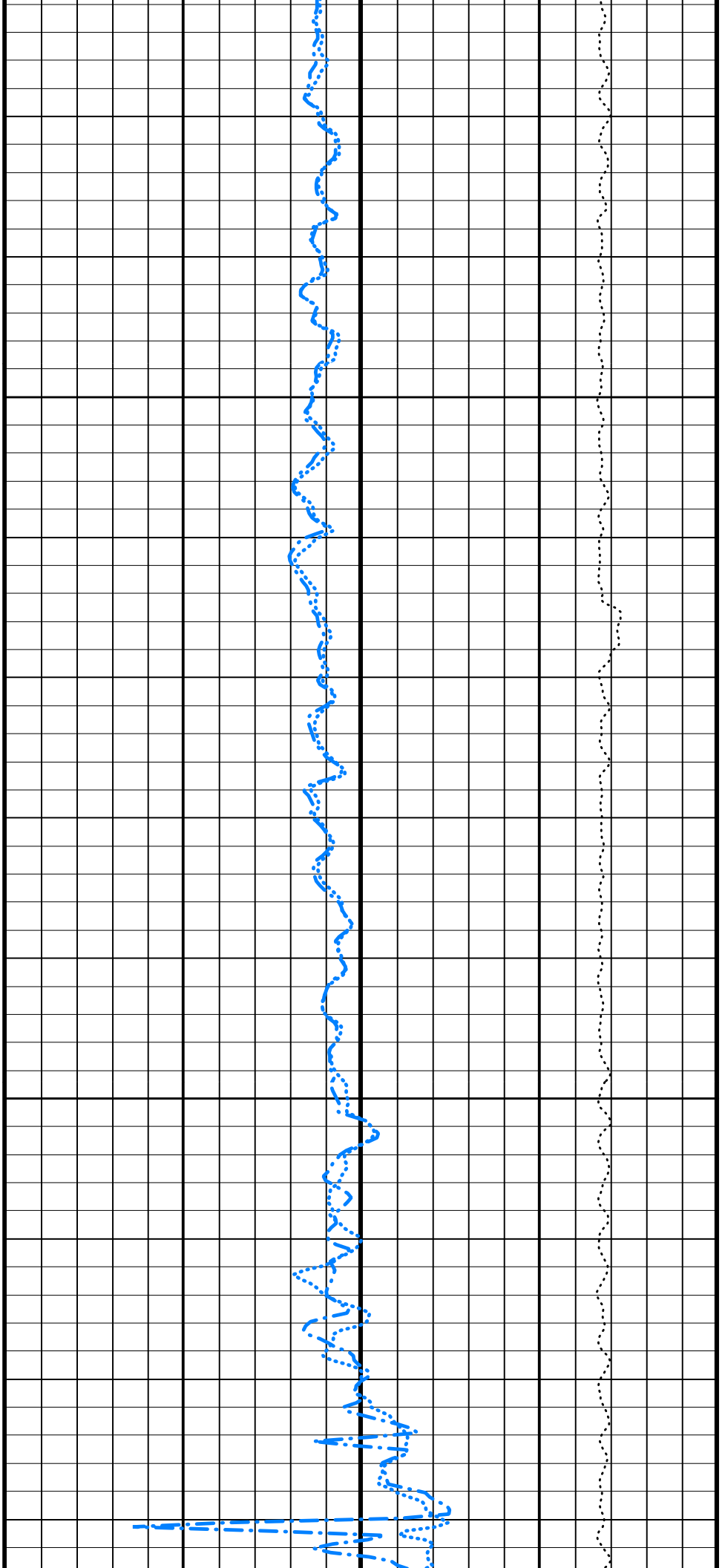
3400

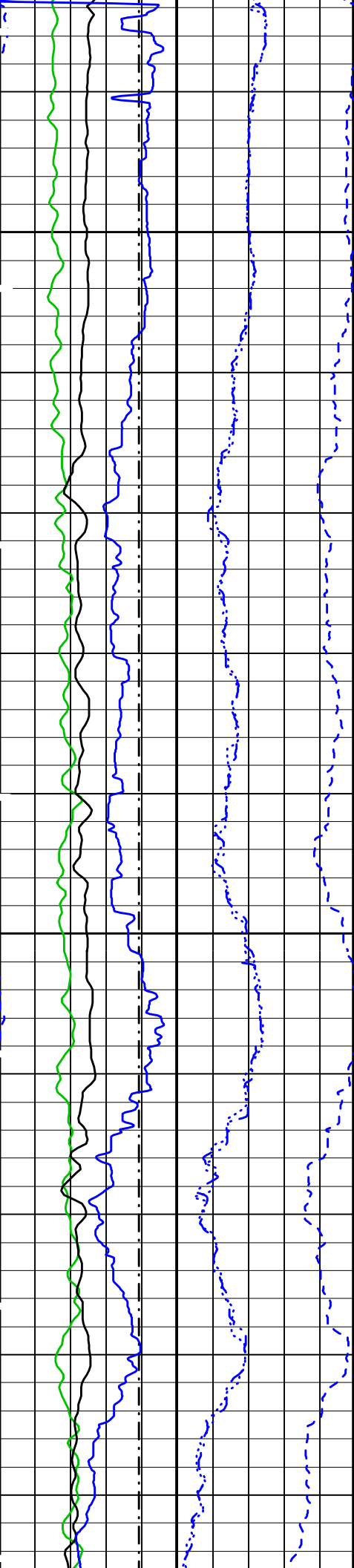




3425

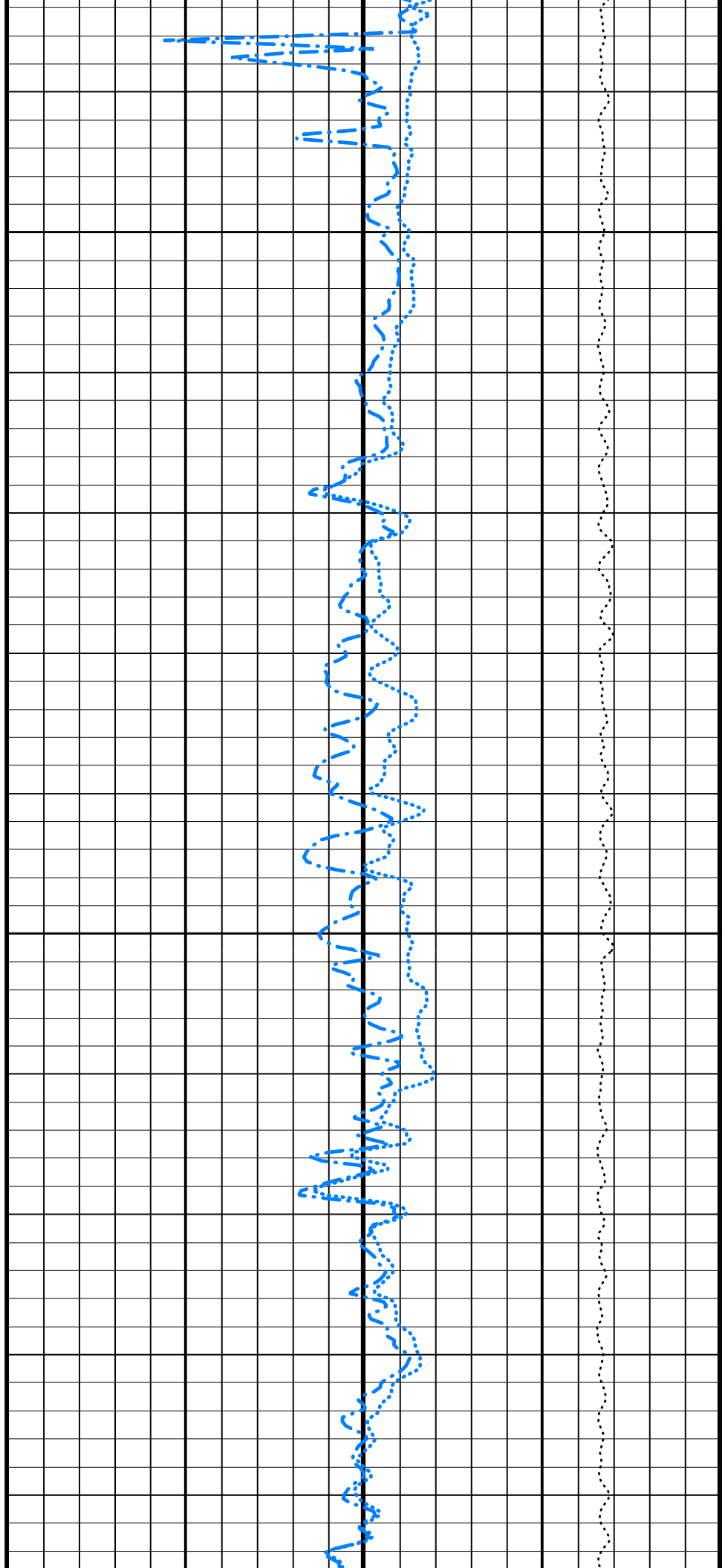
3450

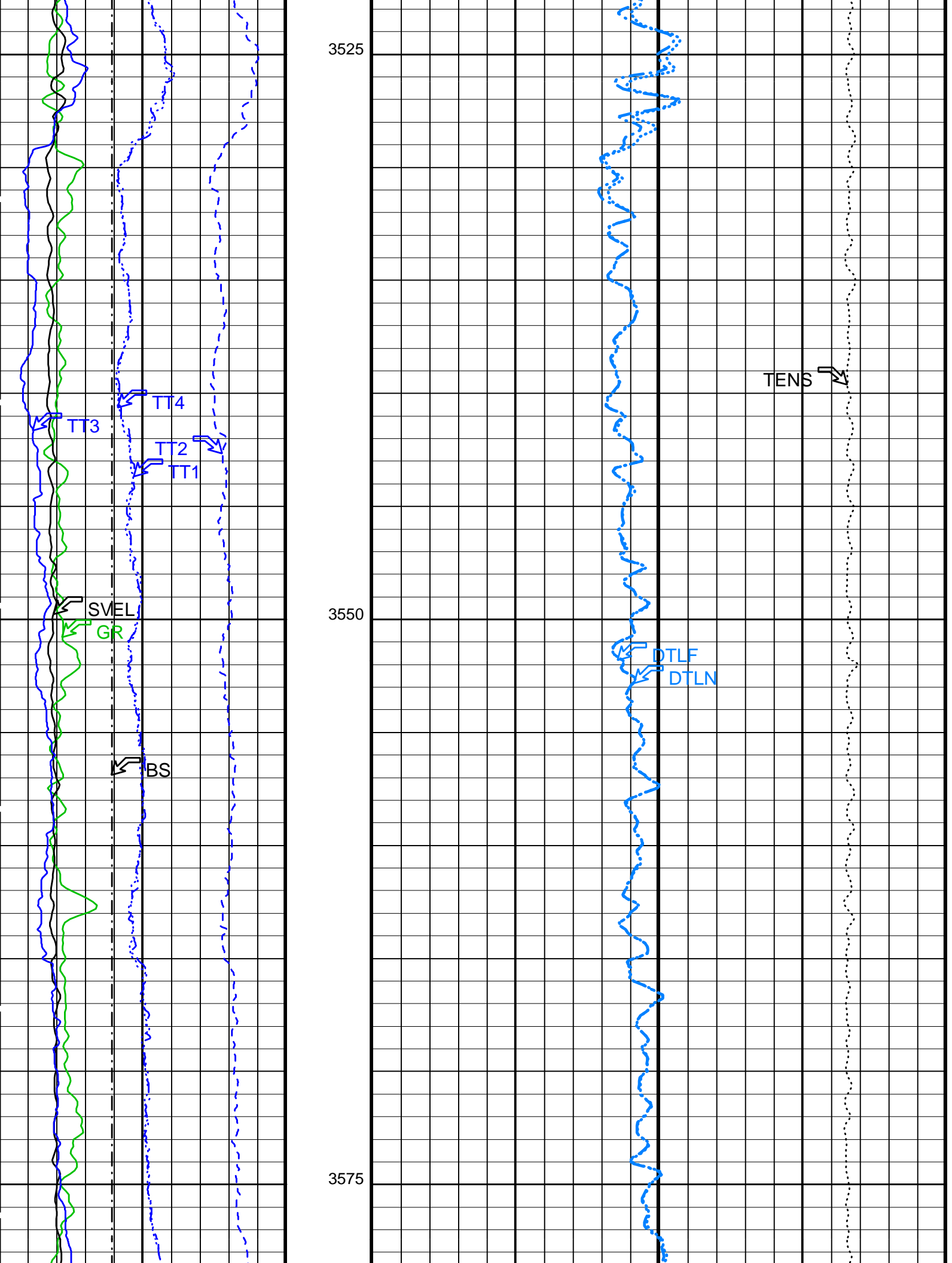


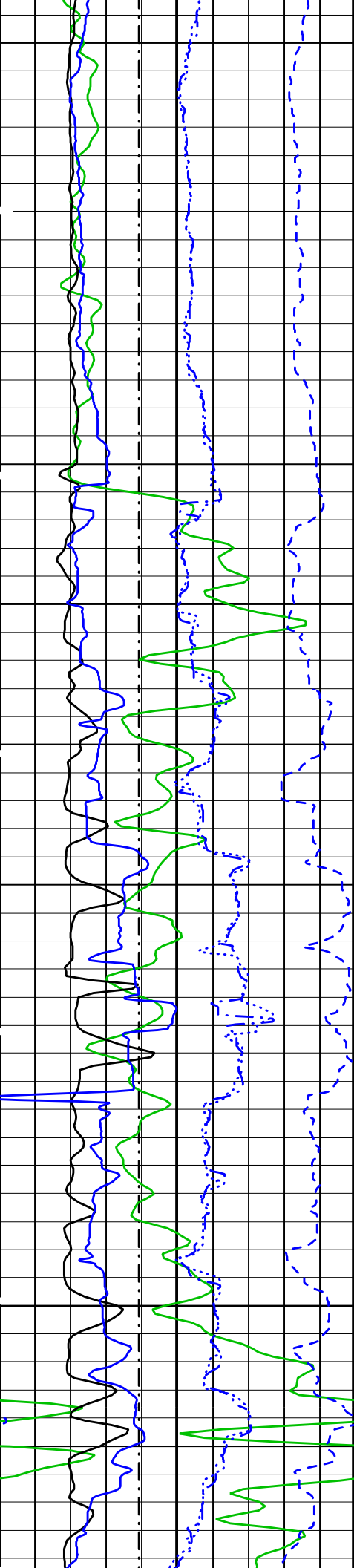


3475

3500

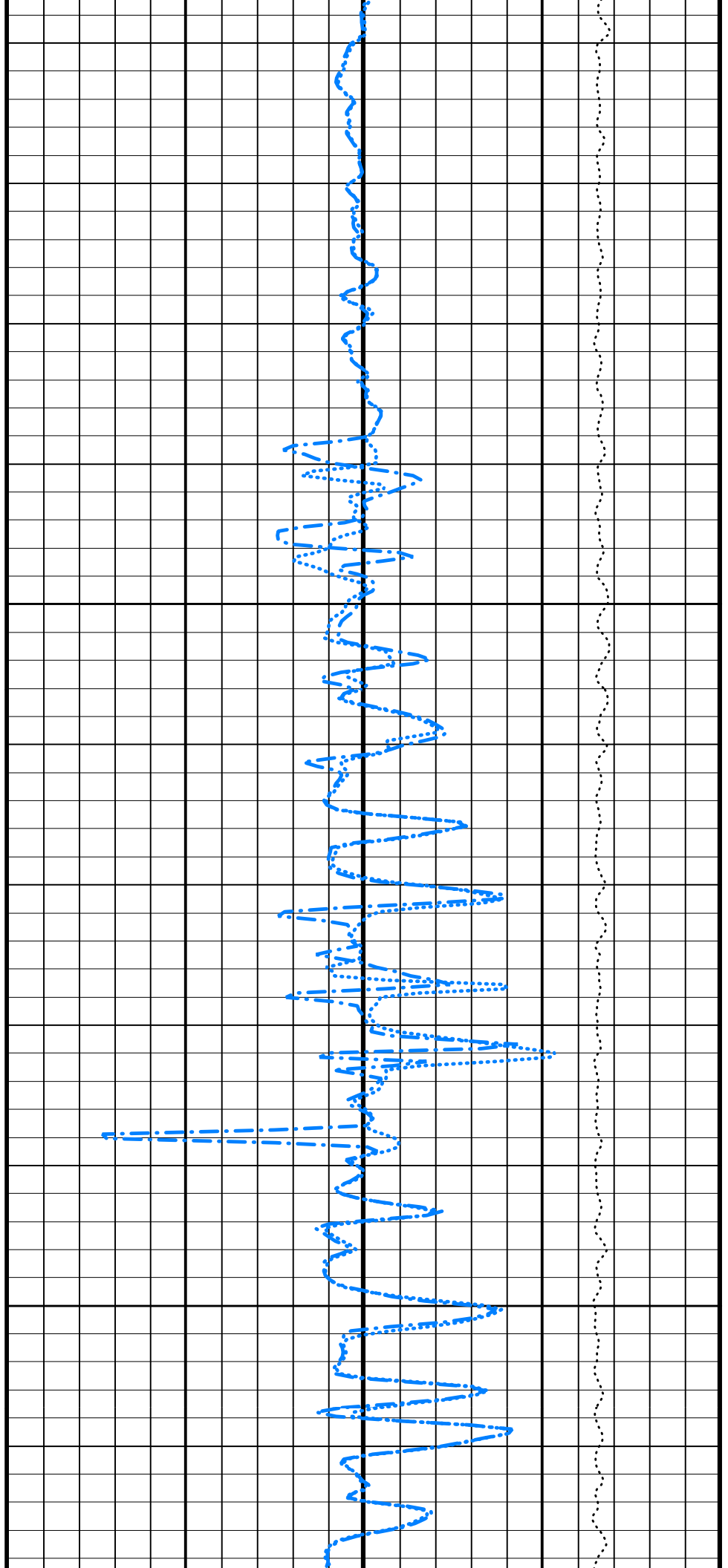


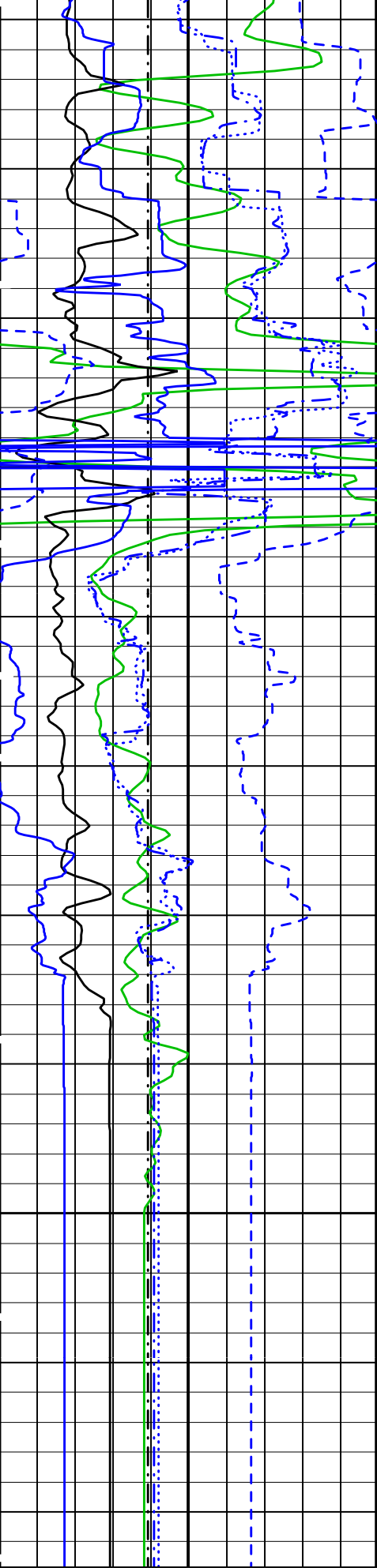




3600

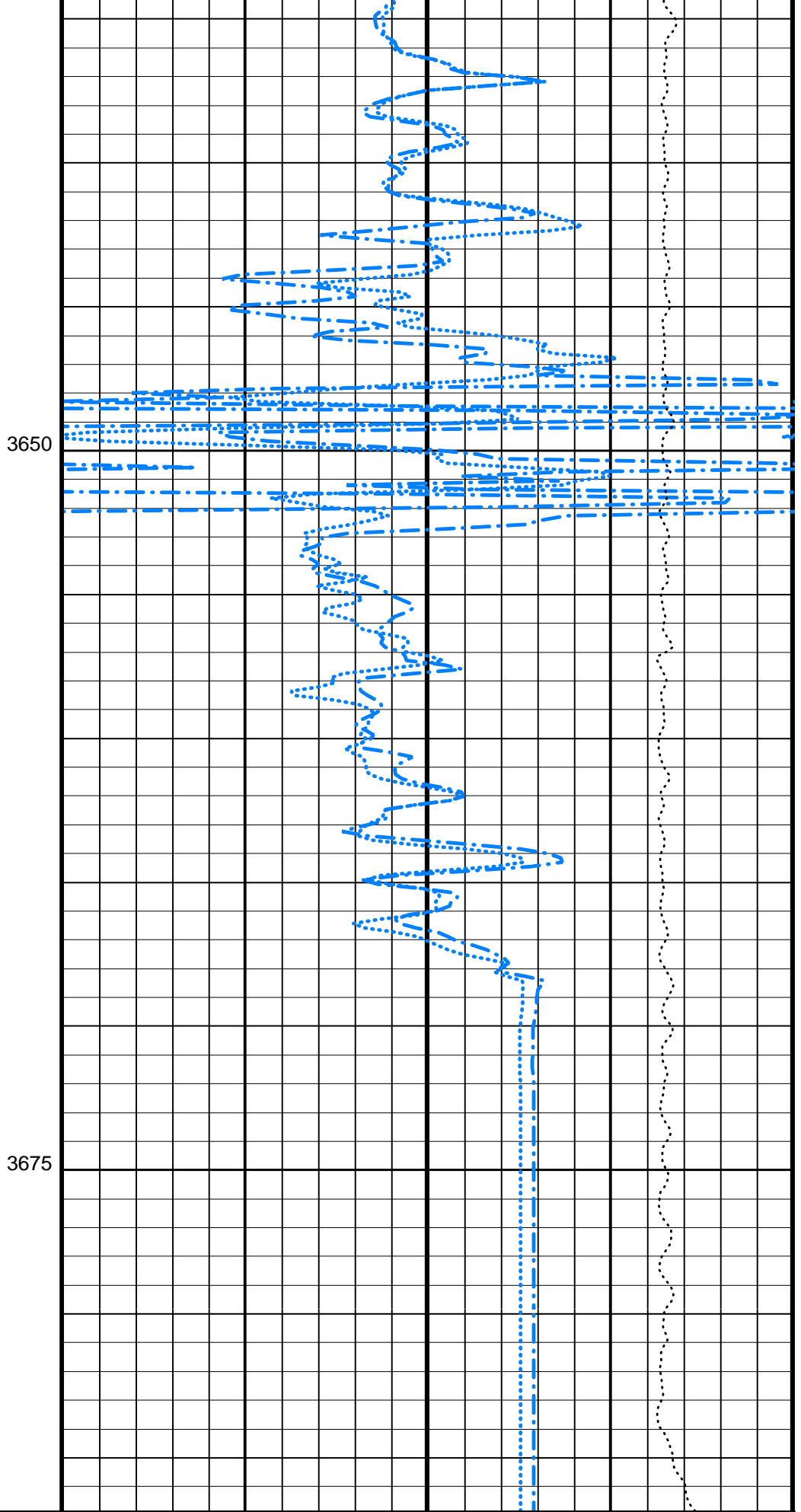
3625





Bit Size (BS)
(IN)

6 16



3650

3675

Delta-T Long Spacing Near (DTLN)
(US/F)

250 50

Delta-T Long Spacing Far (DTLF)

0	(GAPI)	150
Sonic Velocity (SVEL)		
1000	(M/S)	6000
Transit Time 1 (TT1)		
1200	(US)	200
Transit Time 2 (TT2)		
1200	(US)	200
Transit Time 3 (TT3)		
1200	(US)	200
Transit Time 4 (TT4)		
1200	(US)	200

250	(US/F)	50
Pass #2, Repeat Section		
Tension (TENS)		
10000	(LBF)	0

PIP SUMMARY
 Time Mark Every 60 S

Parameters		
DLIS Name	Description	Value
DSLTT-FTB:	Digitizing Sonic Logging Tool	
DDEL	DSLTT Firing Mode	LDDB
DFAD_TYPE	Telemetry Mode	DSLTT_FTB
DIVL	Digitizing Delay	0 US
DRCS	DFAD type	DFAD2
DSIN	DSLTT Depth Sampling Interval	20
DTFS	DSLTT DLIS Recording Size	250
DWCO	Digitizing Sample Interval	10
GAI	DSLTT Telemetry Frame Size	536
MAHTR	Digitizing Word Count	250
MGAI	Manual Gain	40
MNHTR	Manual High Threshold Reference	40
NMSG	Maximum Gain	60
NMXG	Minimum High Threshold Reference	30
RATE	Near Minimum Sliding Gate	390 US
SFAC	Near Maximum Sliding Gate	2190 US
SGCL	Firing Rate	R15
SGDT	Sonic Formation Attenuation Factor	16 DB/M
SGW	Sliding Gate Closing Delta-T	200 US/F
SLEV	Sliding Gate Delta-T	55 US/F
WAGC	Sliding Gate Width	112 US
WMOD	Signal Level for AGC	4140
	Waveform AGC Allow/Disallow	OFF
	Waveform Firing Mode	FULL
System and Miscellaneous		
BS	Bit Size	9.875 IN

Format: SONI Vertical Scale: 1:200 Graphics File Created: 31-Jan-2003 23:26

OP System Version: 10C0-306			
MCM			
MEST-B	10C0-306	DTA-A	10C0-306
SGT-N	10C0-306	DSLTT-FTB	OP10-KP1
DTC-H	10C0-306		

Output DLIS Files				
DEFAULT	FMS_SONIC_013LUP	FN:19	PRODUCER	31-Jan-2003 23:26
REDUCED	FMS_SONIC_013LUP	FN:20	PRODUCER	31-Jan-2003 23:26

Calibration and Check Summary							
Measurement	Nominal	Master	Before	After	Change	Limit	Units
Micro Electrical Scanner - B (Slim) Wellsite Calibration - Caliper Calibration							
Before: 13-Jan-2003 8:27							
Caliper 1 Zero Measurement	12.00	N/A	12.79	N/A	N/A	N/A	IN

Caliper 2 Zero Measurement	12.00	N/A	12.83	N/A	N/A	N/A	IN
Caliper 1 Plus Measurement	15.00	N/A	15.78	N/A	N/A	N/A	IN
Caliper 2 Plus Measurement	15.00	N/A	15.84	N/A	N/A	N/A	IN

Micro Electrical Scanner - B (Slim) Wellsite Calibration - CROUZET ACCELEROMETER PROM HAS BEEN READ CORRECTLY

Before: 14-Jan-2003 22:29

TEMPERATURE REFERENCE :	N/A	N/A	20	N/A	N/A	N/A	DEGC
YEAR OF CALIBRATION :	N/A	N/A	92	N/A	N/A	N/A	
MONTH OF CALIBRATION :	N/A	N/A	10	N/A	N/A	N/A	
SERIAL NUMBER :	N/A	N/A	448	N/A	N/A	N/A	

Micro Electrical Scanner - B (Slim) Wellsite Calibration - CROUZET MAGNETOMETER PROM HAS BEEN READ CORRECTLY

Before: 14-Jan-2003 22:29

TEMPERATURE REFERENCE :	N/A	N/A	19	N/A	N/A	N/A	DEGC
YEAR OF CALIBRATION :	N/A	N/A	99	N/A	N/A	N/A	
MONTH OF CALIBRATION :	N/A	N/A	12	N/A	N/A	N/A	
SERIAL NUMBER :	N/A	N/A	428	N/A	N/A	N/A	

Scintillation Gamma-Ray - N Wellsite Calibration - Detector Calibration

Before: 14-Jan-2003 17:22

Gamma Ray (Jig - Bkg)	163.9	N/A	163.9	N/A	N/A	14.90	GAPI
Gamma Ray (Calibrated)	165.0	N/A	165.0	N/A	N/A	15.00	GAPI

Micro Electrical Scanner - B (Slim) / Equipment Identification

Primary Equipment:

MEST Sonde - B	MEDS - B	771
MEST Preamplifier Cartridge - AB	MEPC - AB	
GPIT Cartridge - A	GPIC - A	719
MEST Acquisition Cartridge - A	MEAC - A	833

Auxiliary Equipment:

MEST-B Preamplifier Cartridge Housing	MEPH - A	702
MEST Acquisition Cartridge Housing (Slim)	MEAH - B	701

Scintillation Gamma-Ray - N / Equipment Identification

Primary Equipment:

Scintillation Gamma Cartridge	SGC - TB	9585
Scintillation Gamma Detector	SGD - TAA	

Auxiliary Equipment:

Scintillation Gamma Housing	SGH - K	2450
Gamma Source Radioactive	GSR - U/Y	

Scintillation Gamma-Ray - N Wellsite Calibration

Detector Calibration

Phase	Gamma Ray Background GAPI	Value	Phase	Gamma Ray (Jig - Bkg) GAPI	Value	Phase	Gamma Ray (Calibrated) GAPI	Value
Before		4.177	Before		163.9	Before		165.0
	0 (Minimum) 30.00 (Nominal) 120.0 (Maximum)			149.0 (Minimum) 163.9 (Nominal) 178.8 (Maximum)			150.0 (Minimum) 165.0 (Nominal) 180.0 (Maximum)	

Before: 14-Jan-2003 17:22

Company: Lamont Doherty



Well: ODP Leg 207 Site 1258C

Field: Demarara Rise

Country: Venezuela

Ocean:

Atlantic

Long Spaced Sonic

Gamma Ray