

DISCLAIMER

THE USE OF AND RELIANCE UPON THIS RECORDED-DATA BY THE HEREIN NAMED COMPANY (AND ANY OF ITS AFFILIATES, PARTNERS, REPRESENTATIVES, AGENTS, CONSULTANTS AND EMPLOYEES) IS SUBJECT TO THE TERMS AND CONDITIONS AGREED UPON BETWEEN SCHLUMBERGER AND THE COMPANY, INCLUDING: (a) RESTRICTIONS ON USE OF THE RECORDED-DATA; (b) DISCLAIMERS AND WAIVERS OF WARRANTIES AND REPRESENTATIONS REGARDING COMPANY'S USE OF AND RELIANCE UPON THE RECORDED-DATA; AND (c) CUSTOMER'S FULL AND SOLE RESPONSIBILITY FOR ANY INFERENCE DRAWN OR DECISION MADE IN CONNECTION WITH THE USE OF THIS RECORDED-DATA.



OTHER SERVICES1 OS1: DITE/HLDS/APS/HNGS OS2: WST3 OS3: OS4: OS5:	OTHER SERVICES2 OS1: OS2: OS3: OS4: OS5:
---	---

REMARKS: RUN NUMBER 1 Hole cored with APC/XCB All depths in Meters Below Rig Floor (MBRF). Hole flushed with Sepiolite Sea Floor Driller 3071 MBRF. Total Depth Driller- 3392 MBRF. Total Depth Logger- 3397 MBRF. Casing Bottom Driller 3140 MBRF. Casing Bottom Logger- 3144 MBRF. Large Hole above 3225 MBRF.	REMARKS: RUN NUMBER 2
---	-----------------------

RUN 1			RUN 2		
SERVICE ORDER #: PROGRAM VERSION: 10C0-306 FLUID LEVEL:			SERVICE ORDER #: PROGRAM VERSION: FLUID LEVEL:		
LOGGED INTERVAL	START	STOP	LOGGED INTERVAL	START	STOP

EQUIPMENT DESCRIPTION

RUN 1		RUN 2	
SURFACE EQUIPMENT			
GSR-U/Y WITM (DTS)-A			

DOWNHOLE EQUIPMENT			
LEH-QT		31.27	
LEH-QT			
DTC-H	CTEM	30.10	30.38
ECH-KC 9841	TelStatus ToolStatu	29.46	
SGT-N	Gamma Ray	29.18	29.46
SGH-K 2450			

SGC-TB 9585
SGD-TAA

AH-MCDU
AH-MCDU

27.79

DSST-B
SPAC-B 8128
ECH-SD 8127
SMDR-BD 8076
SMDX-AA 66

25.67

PWF 11.19

AH-MCDL
AH-MCDL

11.19

DTA-A
ECH-KE 8455
DTA-A 8261

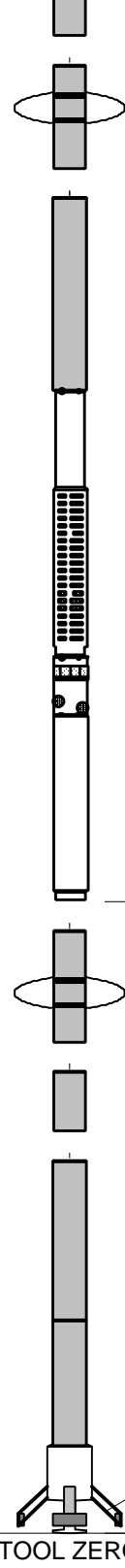
8.90

MEST-B
MEAH-B 497
MEAC-A 875
MEPH-A 769
GPIC-A 719
MEPC-AB 877
MEDS-B 702

7.68

MEDR MEAC
MEPC MEDS-B
HV DF 0.46
Tension GPIT 0.00
TOOL ZERO

MAXIMUM STRING DIAMETER 4.50 IN
MEASUREMENTS RELATIVE TO TOOL ZERO
ALL LENGTHS IN METERS



Output DLIS Files

DEFAULT	FMS_DSI_034LUP	FN:16	PRODUCER	11-Apr-2003 14:08	3399.7 M	3136.1 M
FMS_CUST	FMS_DSI_034LUP	FN:17	PRODUCER	11-Apr-2003 14:08	3399.7 M	3136.1 M

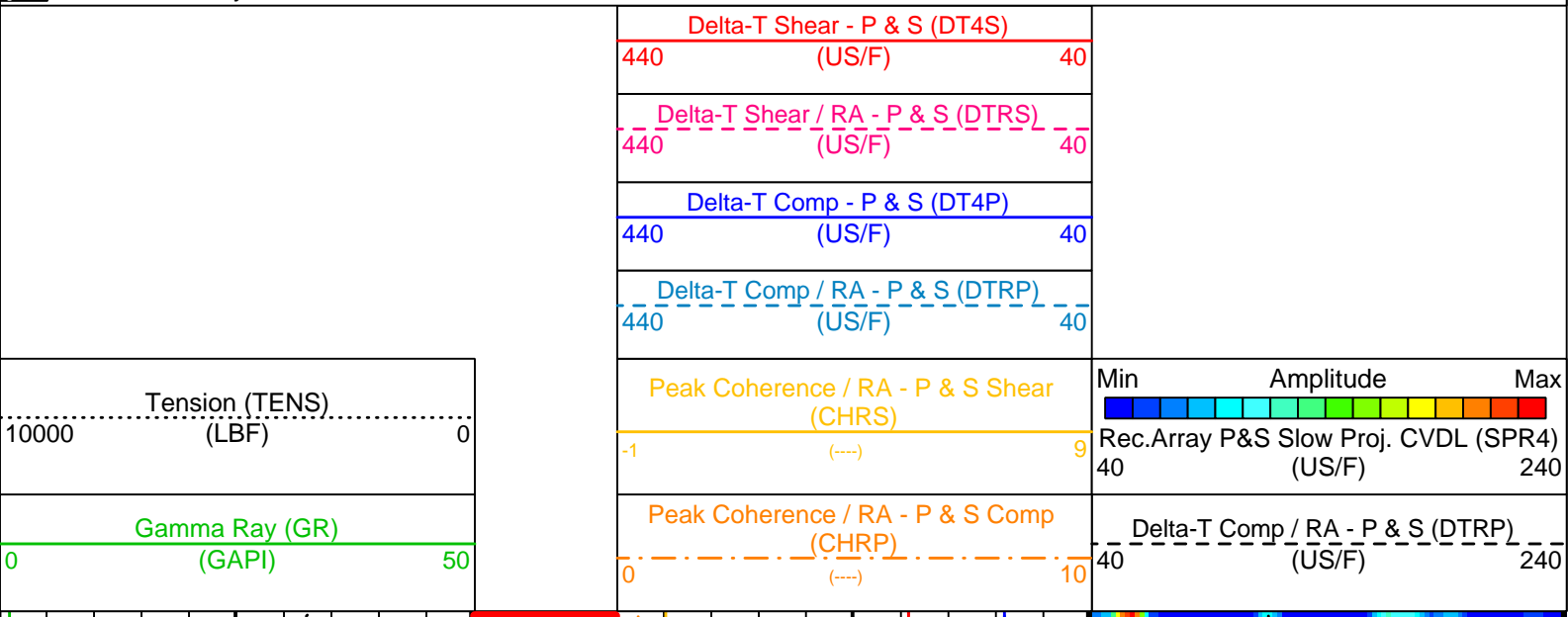
OP System Version: 10C0-306
MCM

MAIN UP LOG

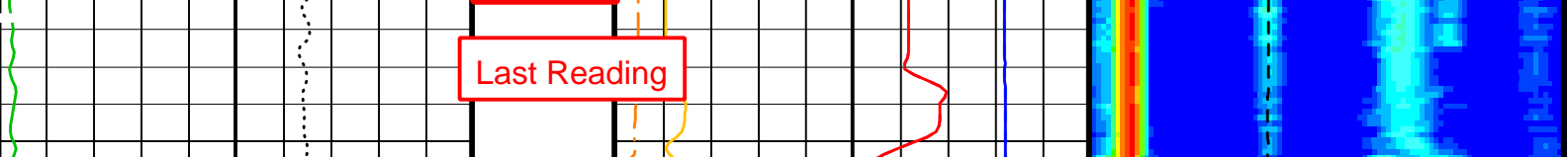
MEST-B	10C0-306	DTA-A	10C0-306
DSST-B	SPC-2277-NUCL_b	SGT-N	10C0-306
DTC-H	10C0-306		

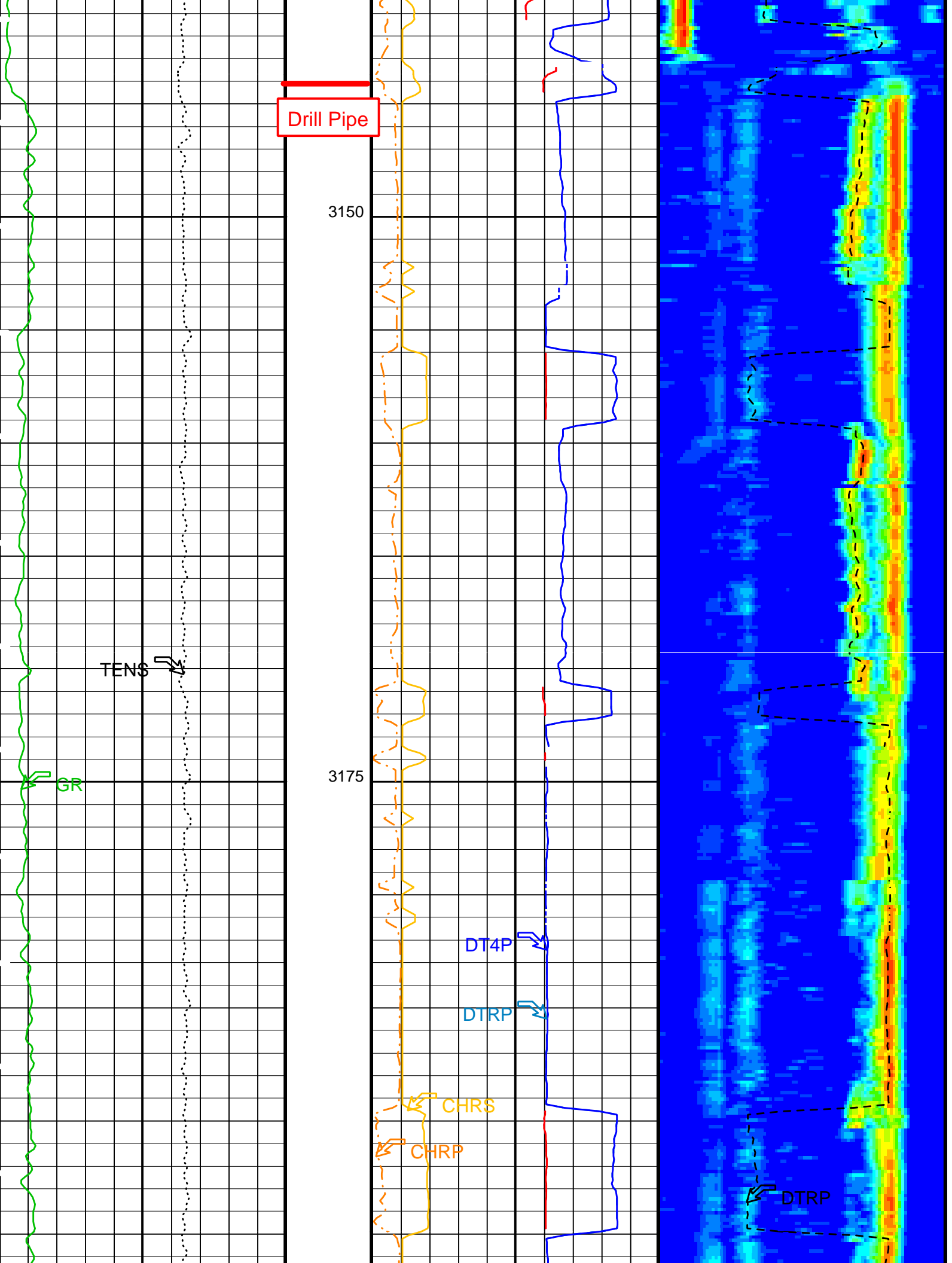
PIP SUMMARY

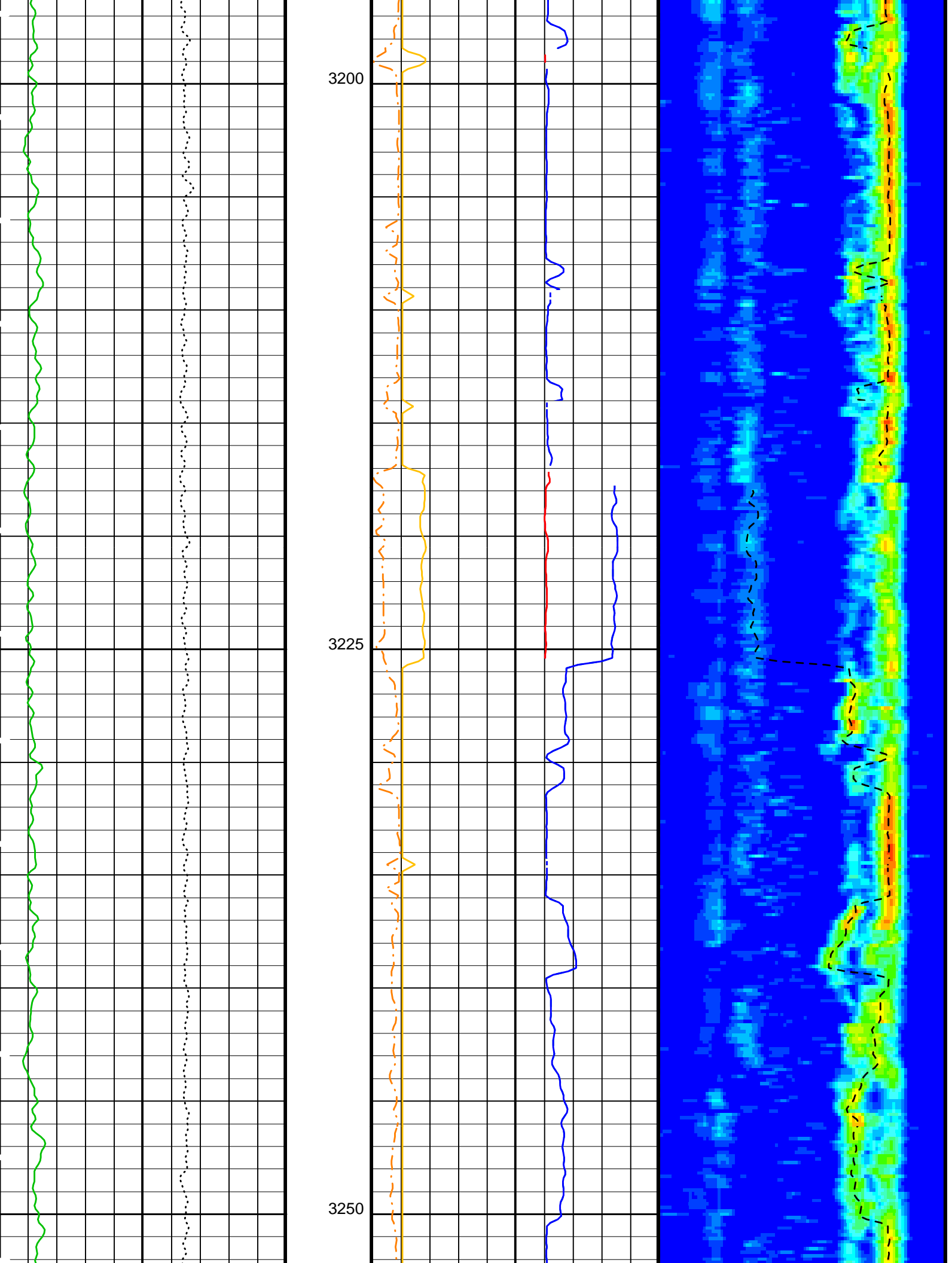
Time Mark Every 60 S

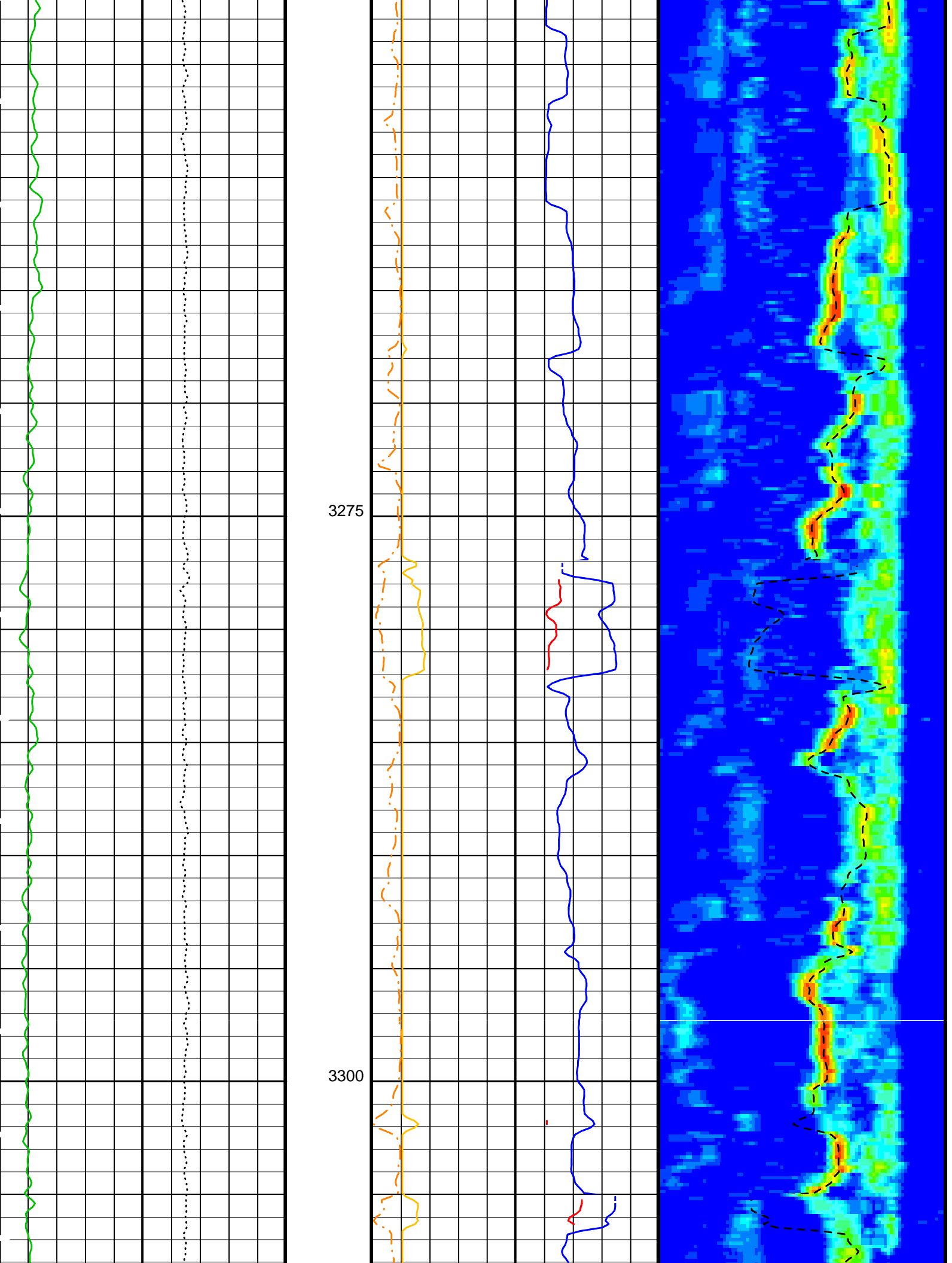


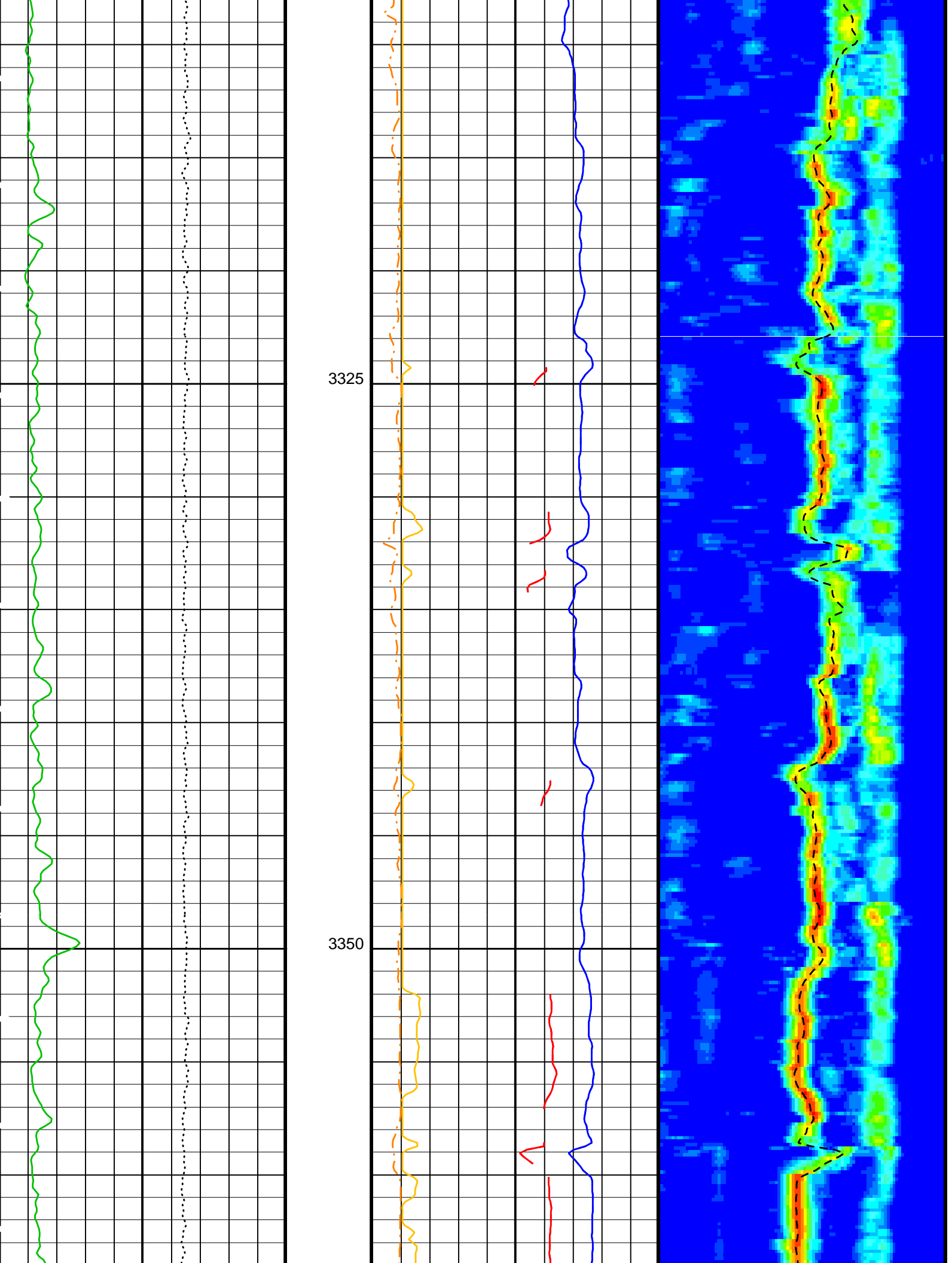
Last Reading

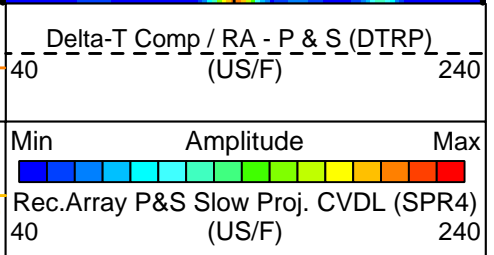
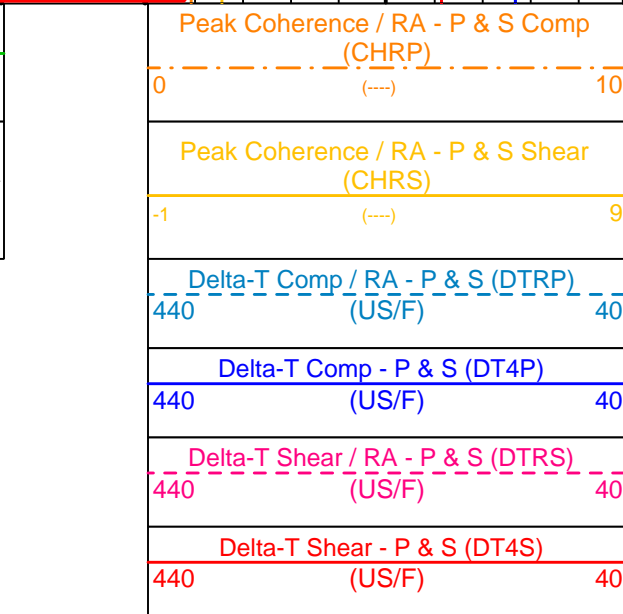
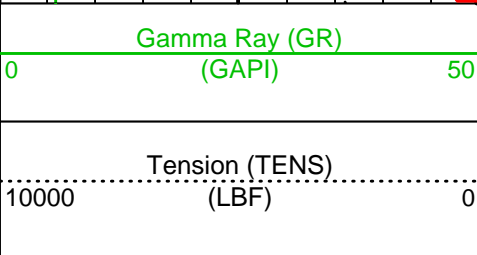
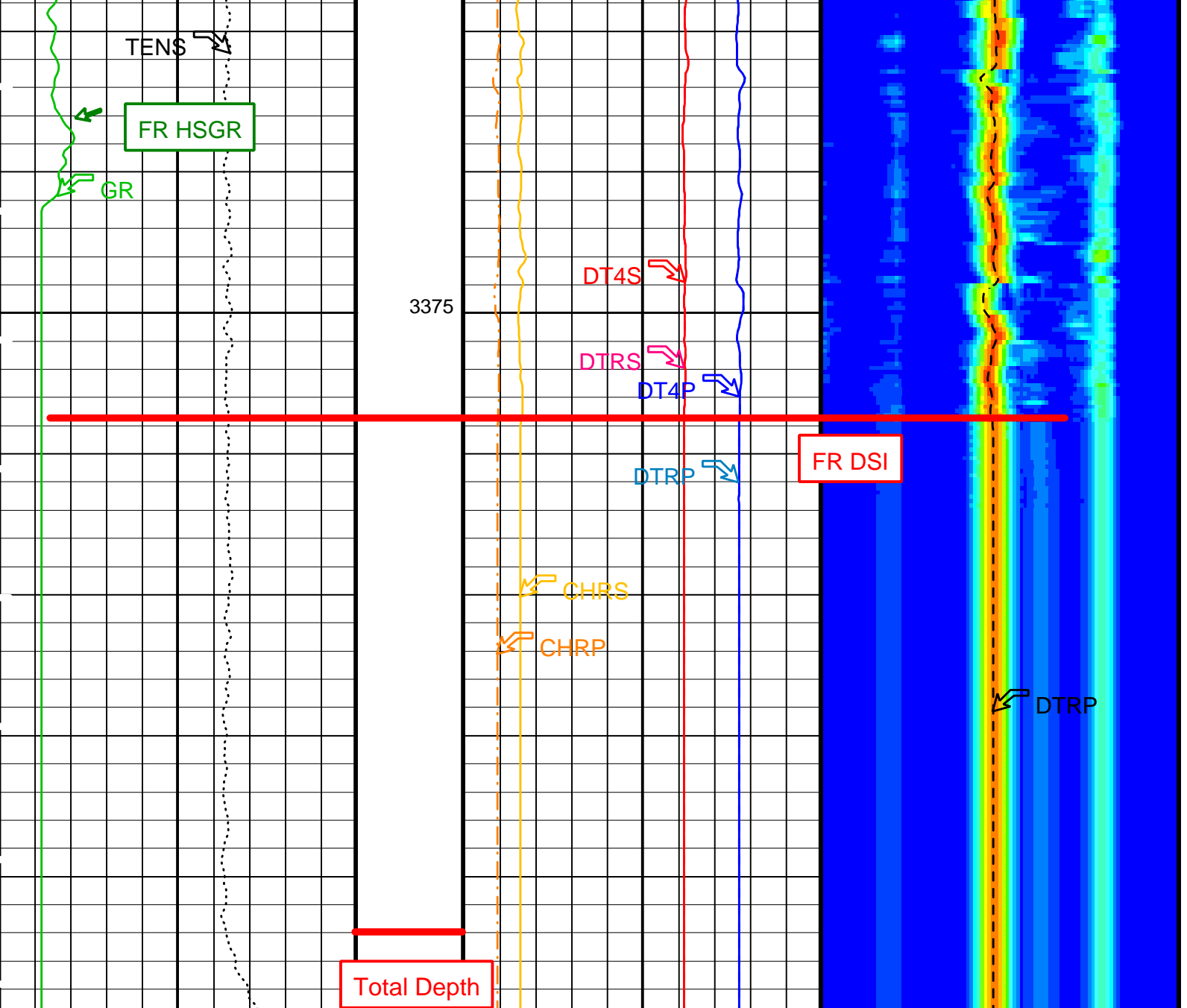












PIP SUMMARY

Time Mark Every 60 S

Parameters

DLIS Name	Description	Value	
	DSST-B: Dipole Shear Imager - B		
BHS	Borehole Status	OPEN	
CASF	Label Casing Function - Monopole P&S	50	
COLL	Label Slowness Lower Limit - Monopole P&S Compressional	100	US/F
COUL	Label Slowness Upper Limit - Monopole P&S Compressional	200	US/F
DDE4	Digitizing Delay 4	0	US
DDEX	Digitizing Delay X	0	US
DSI4	Digitizer Sample Interval 4	10	US
DSIX	Digitizer Sample Interval X	10	US
DTF	Delta-T Fluid	189	US/F
DWC4	Digitizer Word Count 4	512	
DWCX	Digitizer Word Count X	512	
FILG	Label Fill Gap Control - Monopole P&S	COMP_SHEAR	
LFC	Label Formation Character - Monopole P&S	COMP_FIRST	
MCS	Mean Casing Slowness	57	US/F
MTXG	Monopole Transmitter Geometry	186	IN
NWI4	Number Waveform Items 4	8	
RSMN	Label Shear/Compressional Minimum Ratio - Monopole P&S	1.4	
RSMX	Label Shear/Compressional Maximum Ratio - Monopole P&S	2.5	
RX1G	Receiver 1 Geometry	252	IN
RX2G	Receiver 2 Geometry	258	IN
RX3G	Receiver 3 Geometry	264	IN
RX4G	Receiver 4 Geometry	270	IN
RX5G	Receiver 5 Geometry	276	IN
RX6G	Receiver 6 Geometry	282	IN
RX7G	Receiver 7 Geometry	288	IN
RX8G	Receiver 8 Geometry	294	IN
SAM4	DSST Sonic Acquisition Mode 4 - High Frequency Monopole Mode for P&S	ODD	
SAMX	DSST Sonic Acquisition Mode X - Both Dipoles or Monopole Mode for Expert	OFF	
SAS4	STC Sonic Array Status - Monopole P&S	255	
SBO4	STC Search Band Offset - Monopole P&S	500	US
SBR4	STC Baseline Removal - Monopole P&S	ON	
SBW4	STC Search Bandwidth - Monopole P&S	2000	US
SFC4	STC Formation Character - Monopole P&S	SELECTABLE	
SFM4	STC Filter - Monopole P&S	B3-20K	
SHLL	Label Slowness Lower Limit - Monopole P&S Shear	100	US/F
SHUL	Label Slowness Upper Limit - Monopole P&S Shear	240	US/F
SLL4	STC Slowness Lower Limit - Monopole P&S	40	US/F
SST4	STC Slowness Step - Monopole P&S	2	US/F
SSW4	STC Source Waveform - Monopole P&S	WF_SAM4	
STLL	Label Slowness Lower Limit - Monopole Stoneley	180	US/F
STUL	Label Slowness Upper Limit - Monopole Stoneley	780	US/F
SUL4	STC Slowness Upper Limit - Monopole P&S	240	US/F
SWD4	STC Slowness Width - Monopole P&S	10	US/F
TBF4	STC Time for Baseline Fill - Monopole P&S	300	US
TLL4	STC Time Lower Limit - Monopole P&S	150	US
TST4	STC Time Step - Monopole P&S	50	US
TUL4	STC Time Upper Limit - Monopole P&S	2820	US
TWD4	STC Time Width - Monopole P&S	1000	US
TWI4	STC Integration Time Window - Monopole P&S	500	US
TWSX	Transmitter Waveform Select X	0	
	SGT-N: Scintillation Gamma-Ray - N		
BHS	Borehole Status	OPEN	
	HOLEV: Integrated Hole/Cement Volume		
BHS	Borehole Status	OPEN	

Format: DSST_P_S_VDL_COLOR Vertical Scale: 1:200 Graphics File Created: 11-Apr-2003 14:08

OP System Version: 10C0-306

MCM

MEST-B	10C0-306	DTA-A	10C0-306
DSST-B	SPC-2277-NUCL_b	SGT-N	10C0-306
DTC-H	10C0-306		

Output DLIS Files

DEFAULT	FMS_DSI_034LUP	FN:16	PRODUCER	11-Apr-2003 14:08
FMS_CUST	FMS_DSI_034LUP	FN:17	PRODUCER	11-Apr-2003 14:08

Output DLIS Files

DEFAULT	FMS_DSI_033LUP	FN:14	PRODUCER	11-Apr-2003 13:46	3402.2 M	3333.9 M
FMS_CUST	FMS_DSI_033LUP	FN:15	PRODUCER	11-Apr-2003 13:46	3402.2 M	3334.0 M

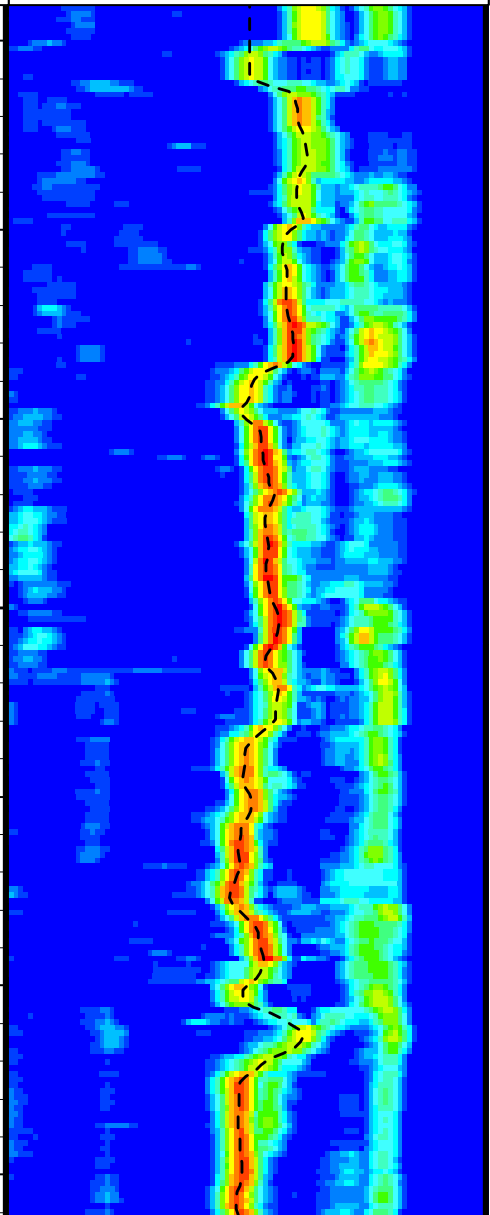
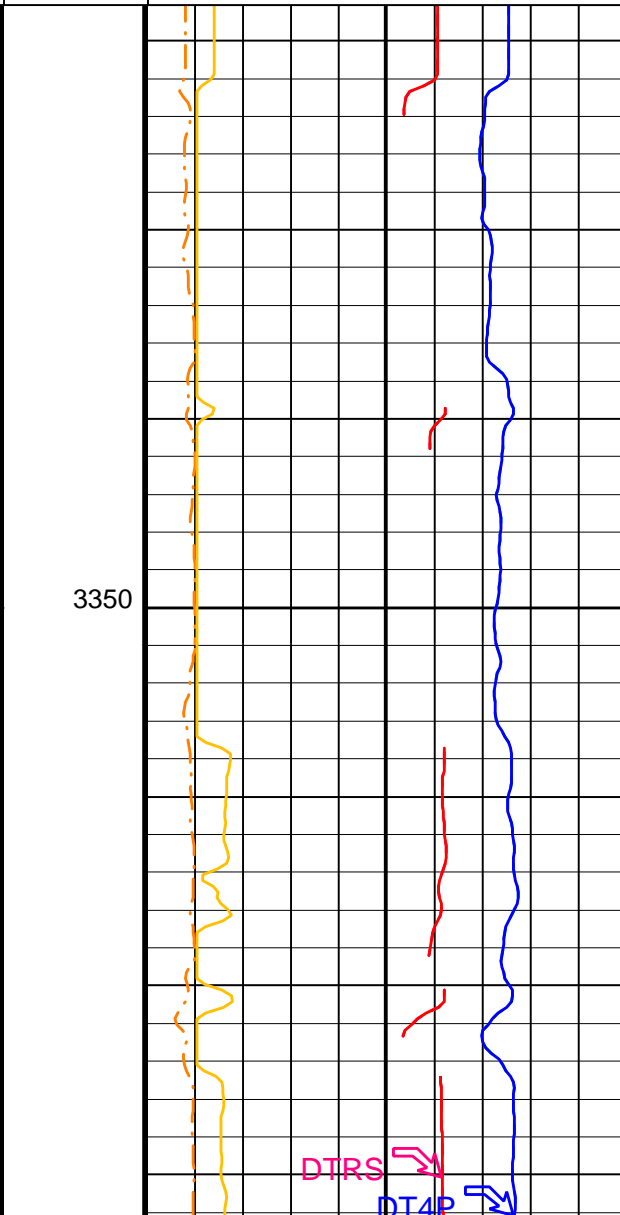
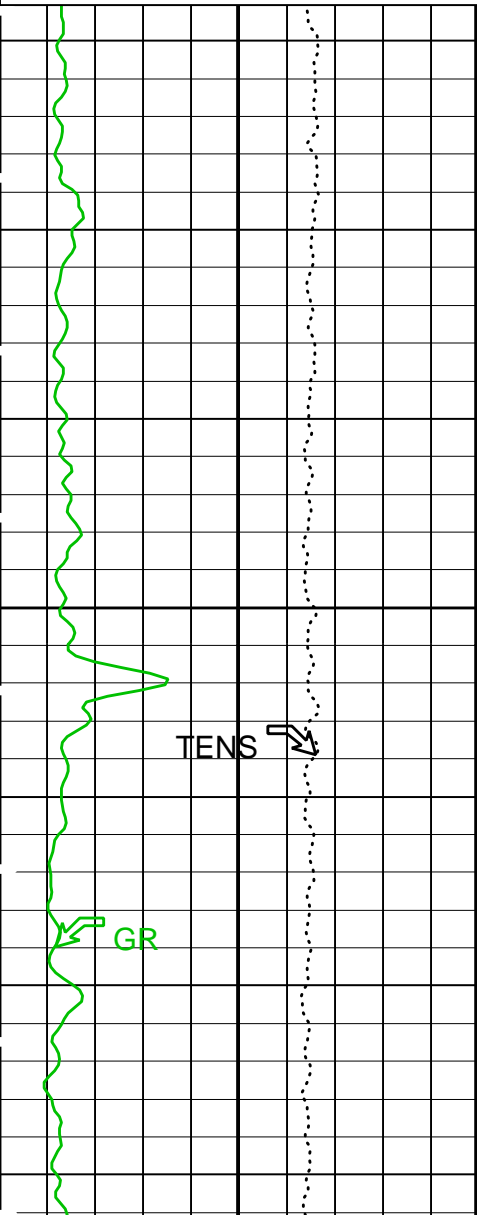
REPEAT UP LOG

MEST-B	10C0-306	DTA-A	10C0-306
DSST-B	SPC-2277-NUCL_b	SGT-N	10C0-306
DTC-H	10C0-306		

PIP SUMMARY

Time Mark Every 60 S

	Delta-T Shear - P & S (DT4S)	
	440 (US/F) 40	
	Delta-T Shear / RA - P & S (DTRS)	
	440 (US/F) 40	
	Delta-T Comp - P & S (DT4P)	
	440 (US/F) 40	
	Delta-T Comp / RA - P & S (DTRP)	
	440 (US/F) 40	
Tension (TENS) (LBF)	Peak Coherence / RA - P & S Shear (CHRS)	Min Amplitude Max
10000 0	-1 (---) 9	40 240
Gamma Ray (GR) (GAPI)	Peak Coherence / RA - P & S Comp (CHRP)	Rec.Array P&S Slow Proj. CVDL (SPR4) (US/F)
0 50	0 (---) 10	40 240



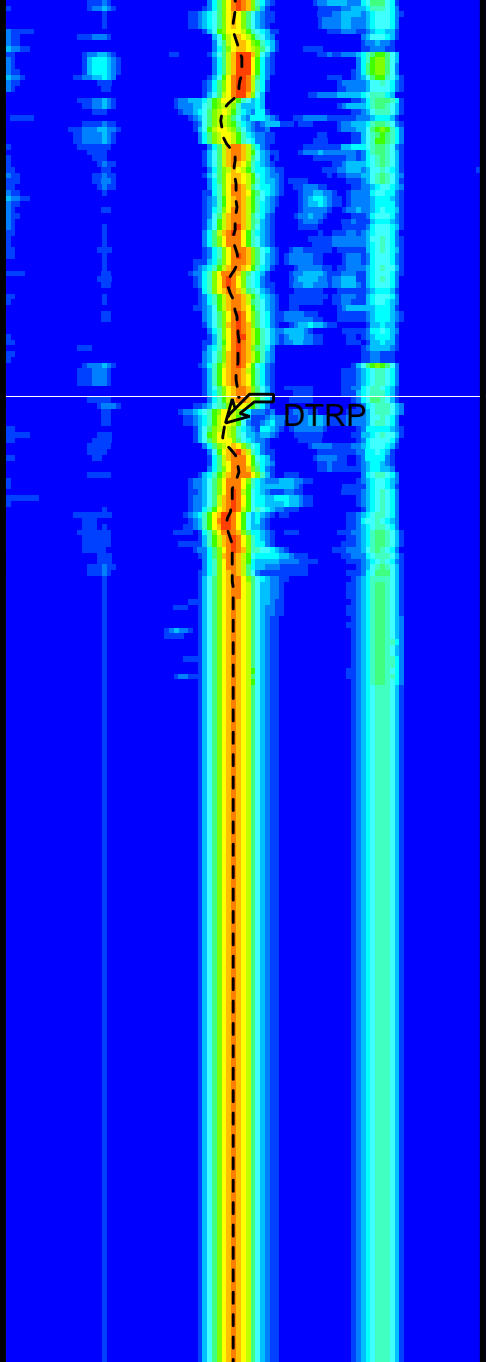
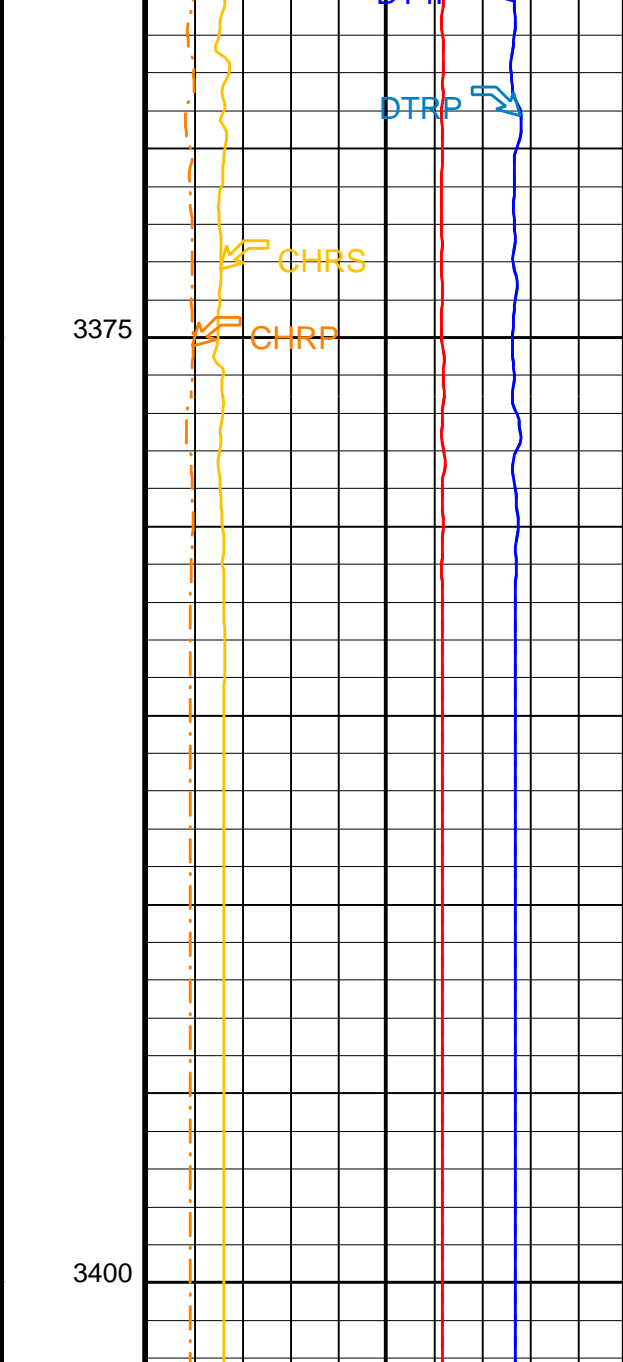
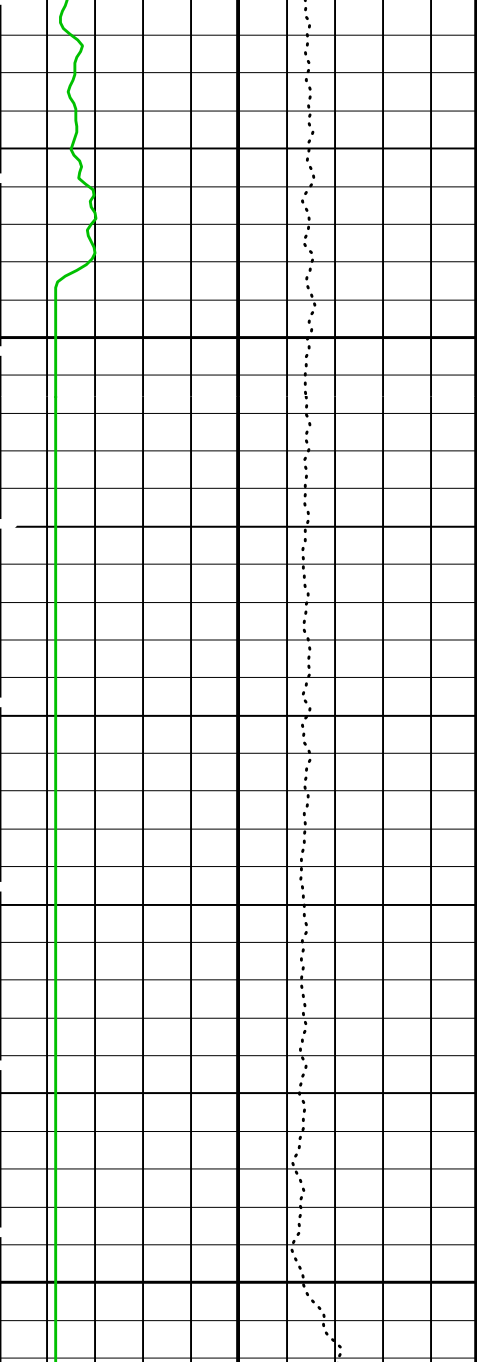
3350

TENS ↘

GR ↘

DTRS ↘

DT4P ↘



Gamma Ray (GR)
(GAPI) 0 50

Tension (TENS)
(LBF) 10000 0

Peak Coherence / RA - P & S Comp
(CHRP) 0 10

Peak Coherence / RA - P & S Shear
(CHRS) -1 9

Delta-T Comp / RA - P & S (DTRP)
(US/F) 40 240

Min Amplitude Max
Rec.Array P&S Slow Proj. CVDL (SPR4)
(US/F) 40 240

Delta-T Comp / RA - P & S (DTRP)
(US/F) 440 40

Delta-T Comp - P & S (DT4P)
(US/F) 440 40

Delta-T Shear / RA - P & S (DTRS)
(US/F) 440 40

Delta-T Shear - P & S (DT4S)
(US/F) 440 40

PIP SUMMARY

Time Mark Every 60 S

Parameters

DLIS Name	Description	Value	
	DSST-B: Dipole Shear Imager - B		
BHS	Borehole Status	OPEN	
CASF	Label Casing Function - Monopole P&S	50	
COLL	Label Slowness Lower Limit - Monopole P&S Compressional	100	US/F
COUL	Label Slowness Upper Limit - Monopole P&S Compressional	200	US/F
DDE4	Digitizing Delay 4	0	US
DDEX	Digitizing Delay X	0	US
DSI4	Digitizer Sample Interval 4	10	US
DSIX	Digitizer Sample Interval X	10	US
DTF	Delta-T Fluid	189	US/F
DWC4	Digitizer Word Count 4	512	
DWCX	Digitizer Word Count X	512	
FILG	Label Fill Gap Control - Monopole P&S	COMP_SHEAR	
LFC	Label Formation Character - Monopole P&S	COMP_FIRST	
MCS	Mean Casing Slowness	57	US/F
MTXG	Monopole Transmitter Geometry	186	IN
NWI4	Number Waveform Items 4	8	
RSMN	Label Shear/Compressional Minimum Ratio - Monopole P&S	1.4	
RSMX	Label Shear/Compressional Maximum Ratio - Monopole P&S	2.5	
RX1G	Receiver 1 Geometry	252	IN
RX2G	Receiver 2 Geometry	258	IN
RX3G	Receiver 3 Geometry	264	IN
RX4G	Receiver 4 Geometry	270	IN
RX5G	Receiver 5 Geometry	276	IN
RX6G	Receiver 6 Geometry	282	IN
RX7G	Receiver 7 Geometry	288	IN
RX8G	Receiver 8 Geometry	294	IN
SAM4	DSST Sonic Acquisition Mode 4 - High Frequency Monopole Mode for P&S	ODD	
SAMX	DSST Sonic Acquisition Mode X - Both Dipoles or Monopole Mode for Expert	OFF	
SAS4	STC Sonic Array Status - Monopole P&S	255	
SBO4	STC Search Band Offset - Monopole P&S	500	US
SBR4	STC Baseline Removal - Monopole P&S	ON	
SBW4	STC Search Bandwidth - Monopole P&S	2000	US
SFC4	STC Formation Character - Monopole P&S	SELECTABLE	
SFM4	STC Filter - Monopole P&S	B3-20K	
SHLL	Label Slowness Lower Limit - Monopole P&S Shear	100	US/F
SHUL	Label Slowness Upper Limit - Monopole P&S Shear	240	US/F
SLL4	STC Slowness Lower Limit - Monopole P&S	40	US/F
SST4	STC Slowness Step - Monopole P&S	2	US/F
SSW4	STC Source Waveform - Monopole P&S	WF_SAM4	
STLL	Label Slowness Lower Limit - Monopole Stoneley	180	US/F
STUL	Label Slowness Upper Limit - Monopole Stoneley	780	US/F
SUL4	STC Slowness Upper Limit - Monopole P&S	240	US/F
SWD4	STC Slowness Width - Monopole P&S	10	US/F
TBF4	STC Time for Baseline Fill - Monopole P&S	300	US
TLL4	STC Time Lower Limit - Monopole P&S	150	US
TST4	STC Time Step - Monopole P&S	50	US
TUL4	STC Time Upper Limit - Monopole P&S	2820	US
TWD4	STC Time Width - Monopole P&S	1000	US
TWI4	STC Integration Time Window - Monopole P&S	500	US
TWSX	Transmitter Waveform Select X	0	
	SGT-N: Scintillation Gamma-Ray - N		
BHS	Borehole Status	OPEN	
	HOLEV: Integrated Hole/Cement Volume		
BHS	Borehole Status	OPEN	

Format: DSST_P_S_VDL_COLOR Vertical Scale: 1:200 Graphics File Created: 11-Apr-2003 13:46

OP System Version: 10C0-306

MCM

MEST-B	10C0-306	DTA-A	10C0-306
DSST-B	SPC-2277-NUCL_b	SGT-N	10C0-306
DTC-H	10C0-306		

Output DLIS Files

DEFAULT	FMS_DSI_033LUP	FN:14	PRODUCER	11-Apr-2003 13:46
FMS_CUST	FMS_DSI_033LUP	FN:15	PRODUCER	11-Apr-2003 13:46

Output DLIS Files

DEFAULT	FMS_DSI_034LUP	FN:16	PRODUCER	11-Apr-2003 14:08	3399.7 M	3136.1 M
FMS_CUST	FMS_DSI_034LUP	FN:17	PRODUCER	11-Apr-2003 14:08	3399.7 M	3136.1 M

OP System Version: 10C0-306

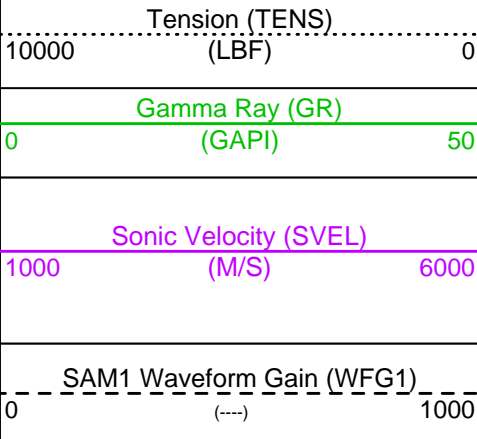
MCM

MAIN UP LOG

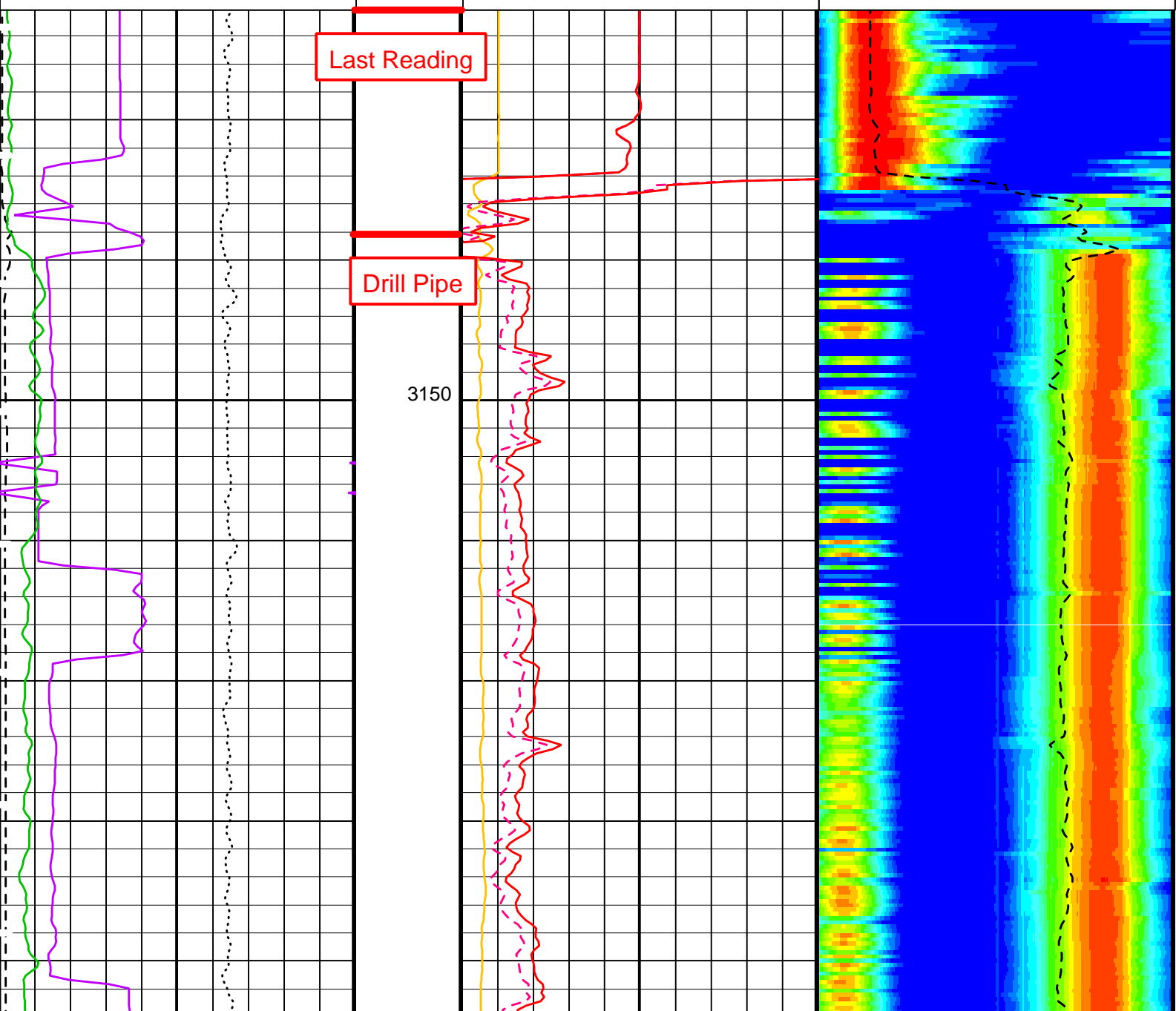
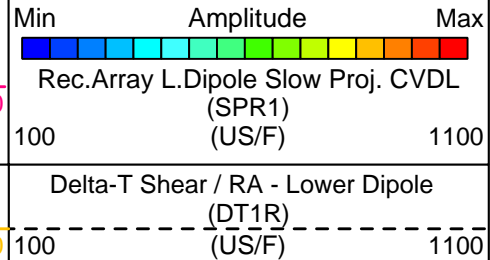
MEST-B	10C0-306	DTA-A	10C0-306
DSST-B	SPC-2277-NUCL_b	SGT-N	10C0-306
DTC-H	10C0-306		

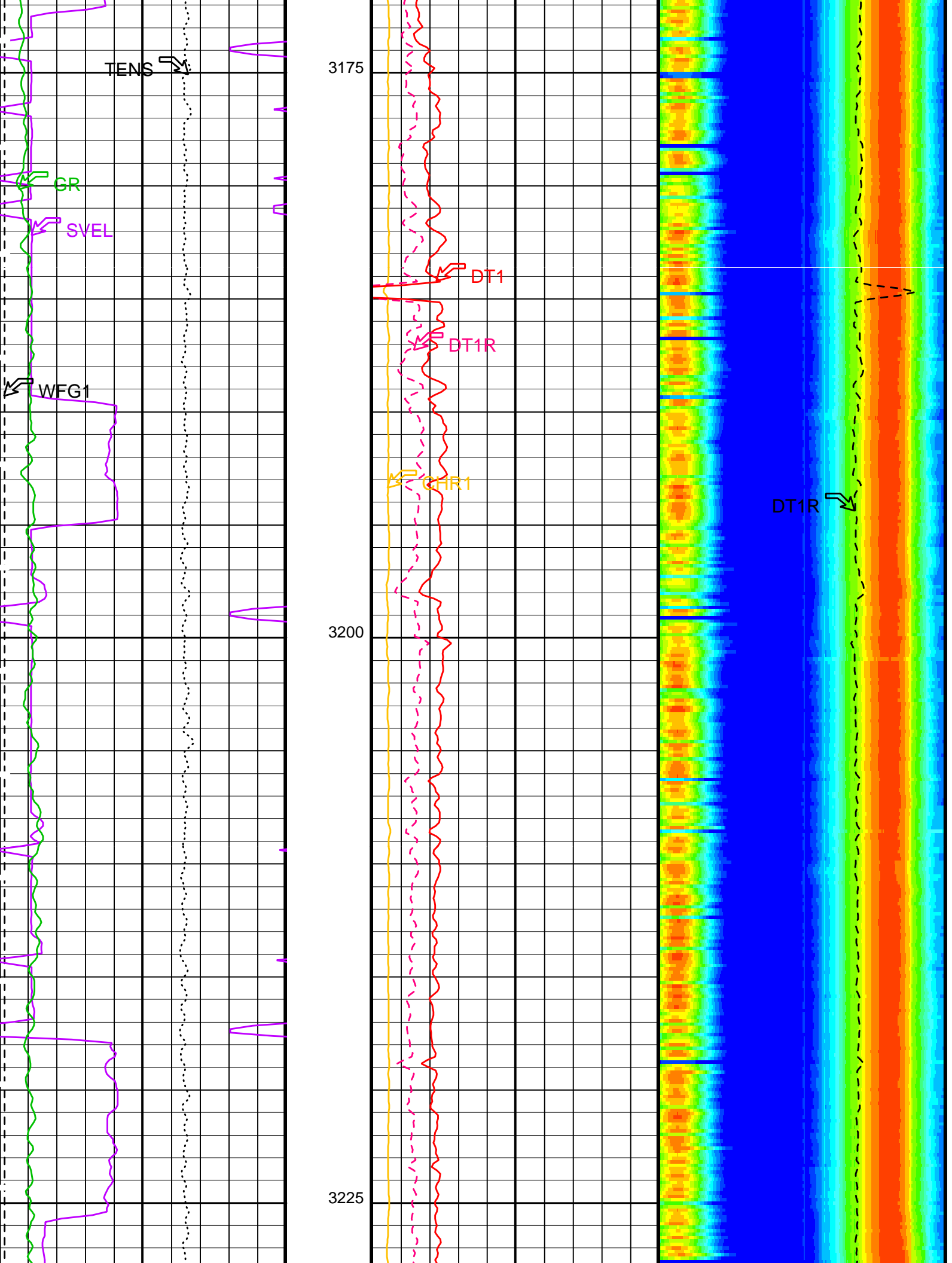
PIP SUMMARY

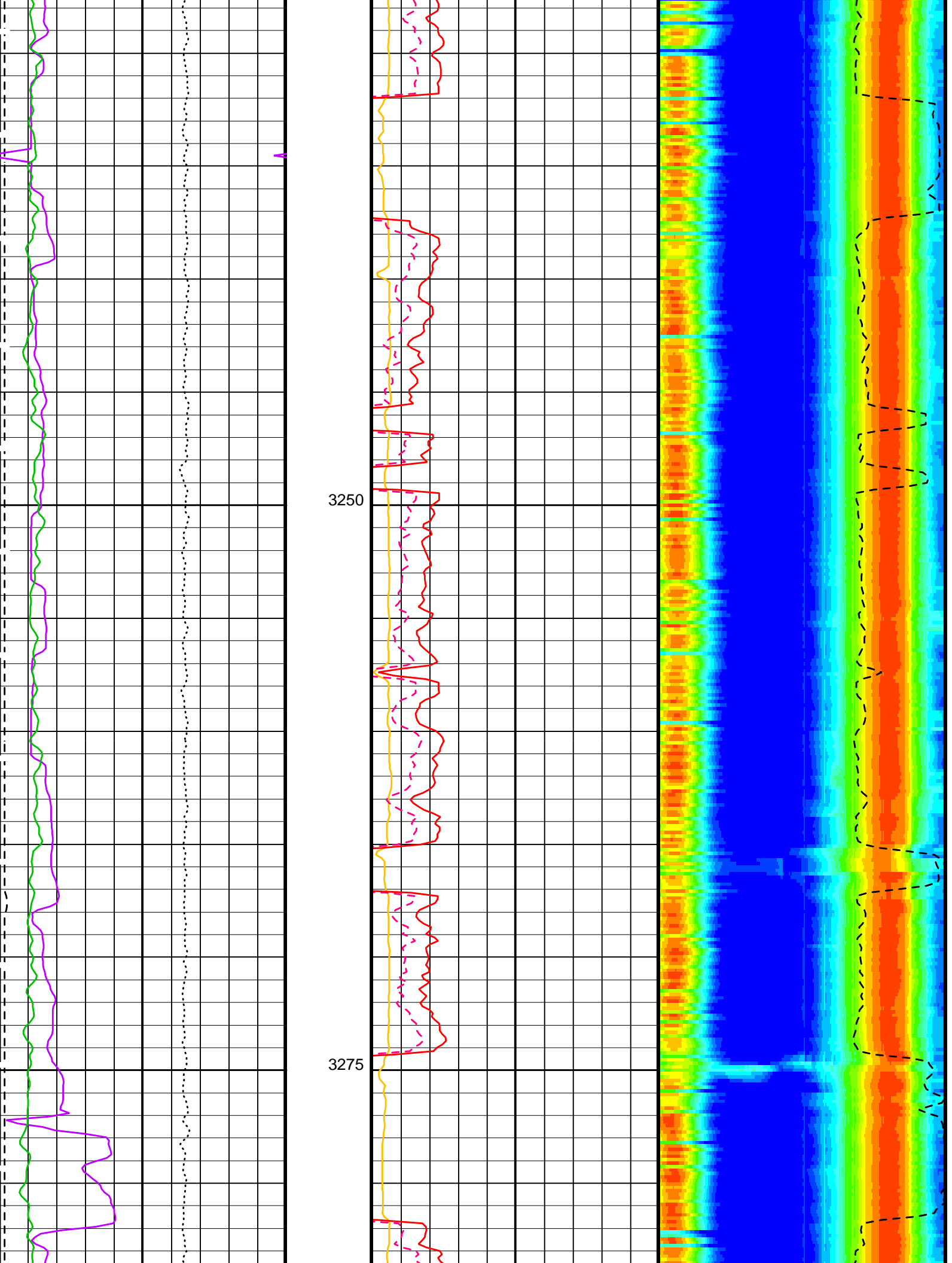
Time Mark Every 60 S

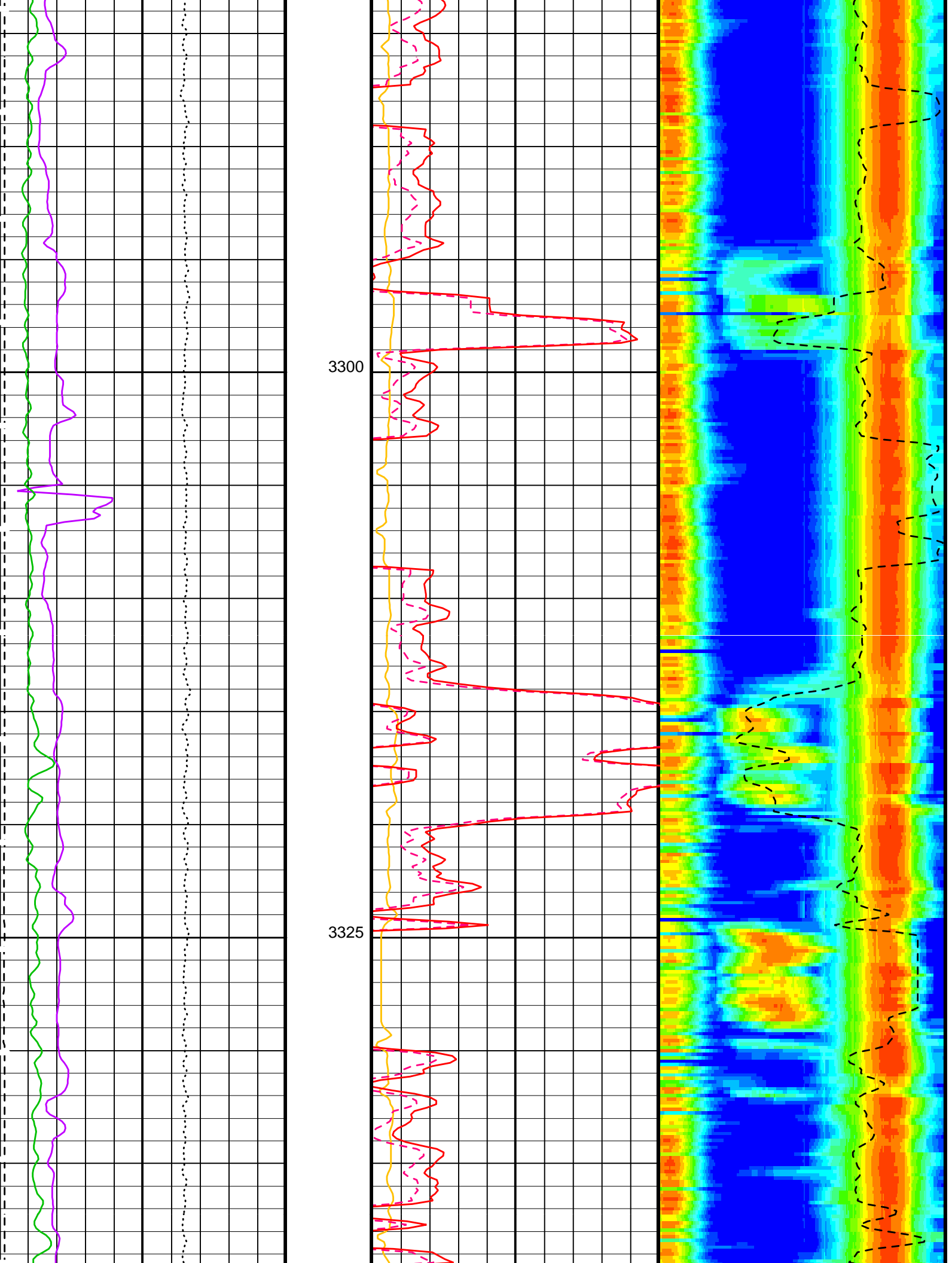


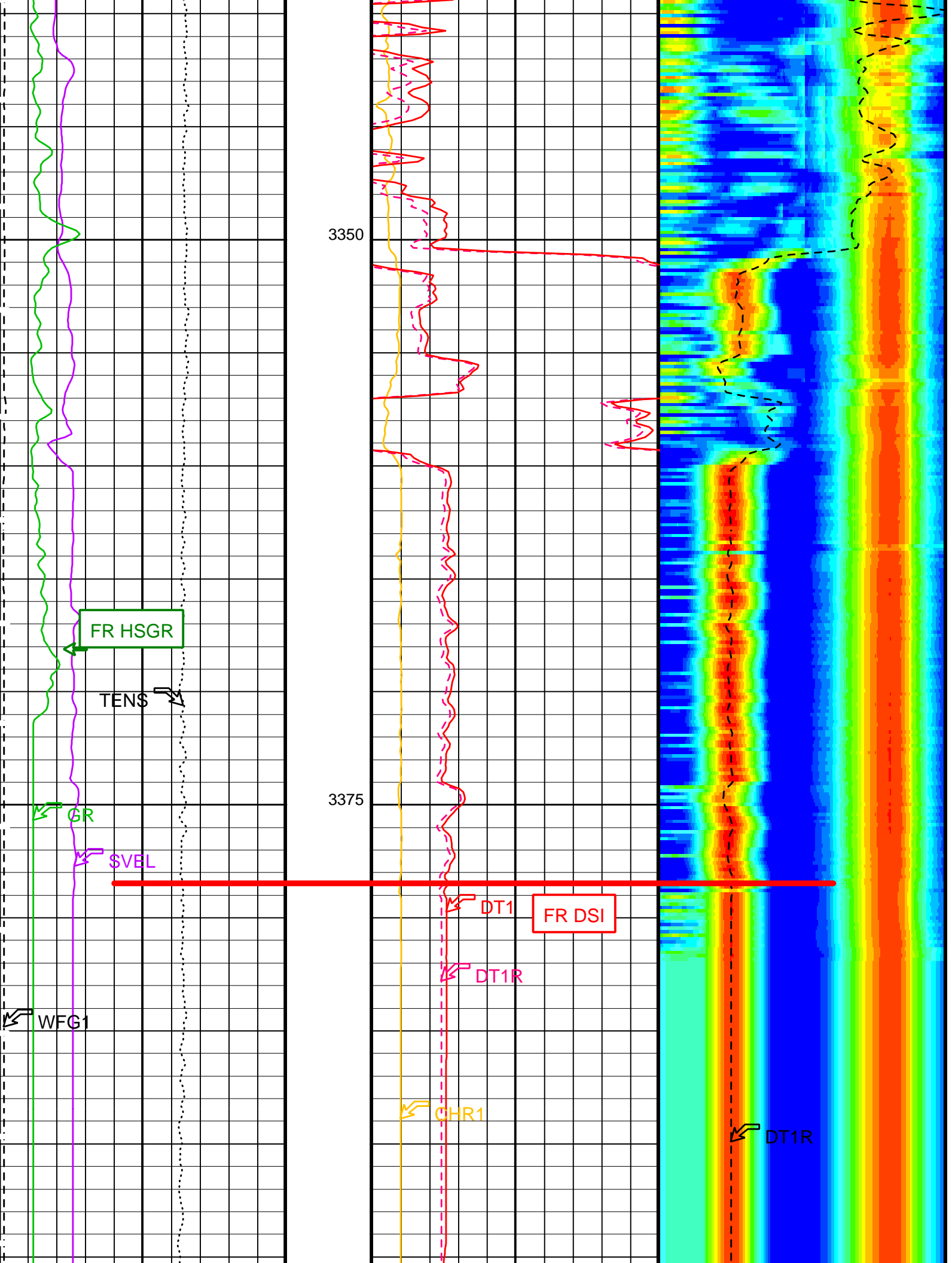
Delta-T Shear - Lower Dipole (DT1)	440	(US/F)	40
Delta-T Shear / RA - Lower Dipole (DT1R)	440	(US/F)	40
Peak Coherence / RA - Lower Dipole (CHR1)	0	(---)	10

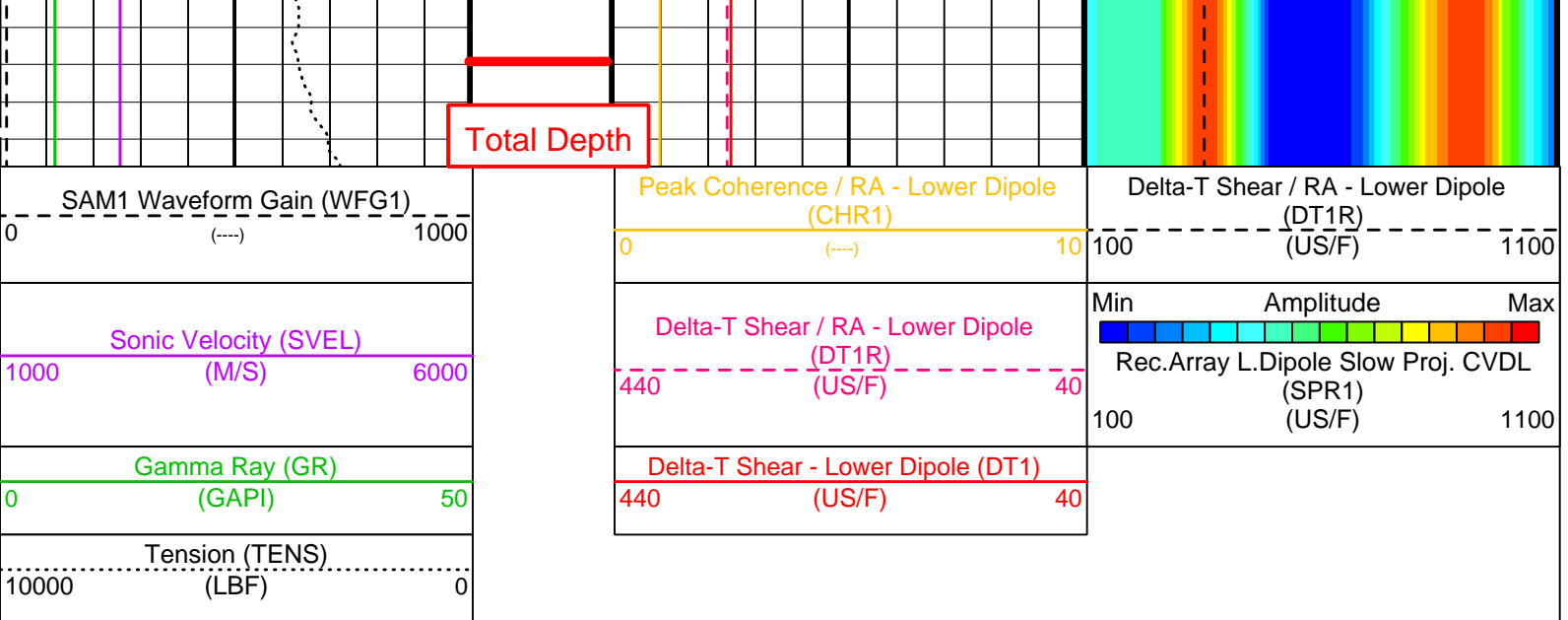












PIP SUMMARY

Time Mark Every 60 S

Parameters

DLIS Name	Description	Value
DSST-B: Dipole Shear Imager - B		
DDE1	Digitizing Delay 1	0 US
DDEX	Digitizing Delay X	0 US
DLCS	Label Compressional Source - Dipole Shear	USE
DSHL	Label Slowness Lower Limit - Dipole Shear	100 US/F
DSHU	Label Slowness Upper Limit - Dipole Shear	1100 US/F
DSI1	Digitizer Sample Interval 1	40 US
DSIX	Digitizer Sample Interval X	10 US
DTCS	Compressional Delta-T Source for DTCO Channel	PS_COMP
DWC1	Digitizer Word Count 1	512
DWCX	Digitizer Word Count X	512
LTXG	Lower Dipole Transmitter Geometry	156 IN
NWI1	Number Waveform Items 1	8
RX1G	Receiver 1 Geometry	252 IN
RX2G	Receiver 2 Geometry	258 IN
RX3G	Receiver 3 Geometry	264 IN
RX4G	Receiver 4 Geometry	270 IN
RX5G	Receiver 5 Geometry	276 IN
RX6G	Receiver 6 Geometry	282 IN
RX7G	Receiver 7 Geometry	288 IN
RX8G	Receiver 8 Geometry	294 IN
SAM1	DSST Sonic Acquisition Mode 1 - Lower Dipole Mode	LFD_EVEN
SAMX	DSST Sonic Acquisition Mode X - Both Dipoles or Monopole Mode for Expert	OFF
SAS1	STC Sonic Array Status - Lower Dipole	255
SBO1	STC Search Band Offset - Lower Dipole	3000 US
SBW1	STC Search Bandwidth - Lower Dipole	8000 US
SFC1	STC Formation Character - Lower Dipole	SELECTABLE
SFM1	STC Filter - Lower Dipole	B.3-1.5K
SLL1	STC Slowness Lower Limit - Lower Dipole	100 US/F
SST1	STC Slowness Step - Lower Dipole	4 US/F
SSW1	STC Source Waveform - Lower Dipole	WF_SAM1
SUL1	STC Slowness Upper Limit - Lower Dipole	1100 US/F
SWD1	STC Slowness Width - Lower Dipole	40 US/F
TBF1	STC Time for Baseline Fill - Lower Dipole	0 US
TLL1	STC Time Lower Limit - Lower Dipole	600 US
TST1	STC Time Step - Lower Dipole	200 US
TUL1	STC Time Upper Limit - Lower Dipole	15800 US
TWD1	STC Time Width - Lower Dipole	2000 US
TWI1	STC Integration Time Window - Lower Dipole	1600 US
TWSX	Transmitter Waveform Select X	0
WFM1	Waveform Mode 1	W1

Format: DSST_LOWER_DIPOLE_VDL_COLOR Vertical Scale: 1:200 Graphics File Created: 11-Apr-2003 14:08

OP System Version: 10C0-306

MCM

MEST-B	10C0-306	DTA-A	10C0-306
DSST-B	SPC-2277-NUCL_b	SGT-N	10C0-306

Output DLIS Files

DEFAULT	FMS_DSI_034LUP	FN:16	PRODUCER	11-Apr-2003 14:08
FMS_CUST	FMS_DSI_034LUP	FN:17	PRODUCER	11-Apr-2003 14:08

Output DLIS Files

DEFAULT	FMS_DSI_033LUP	FN:14	PRODUCER	11-Apr-2003 13:46	3402.2 M	3333.9 M
FMS_CUST	FMS_DSI_033LUP	FN:15	PRODUCER	11-Apr-2003 13:46	3402.2 M	3334.0 M

OP System Version: 10C0-306

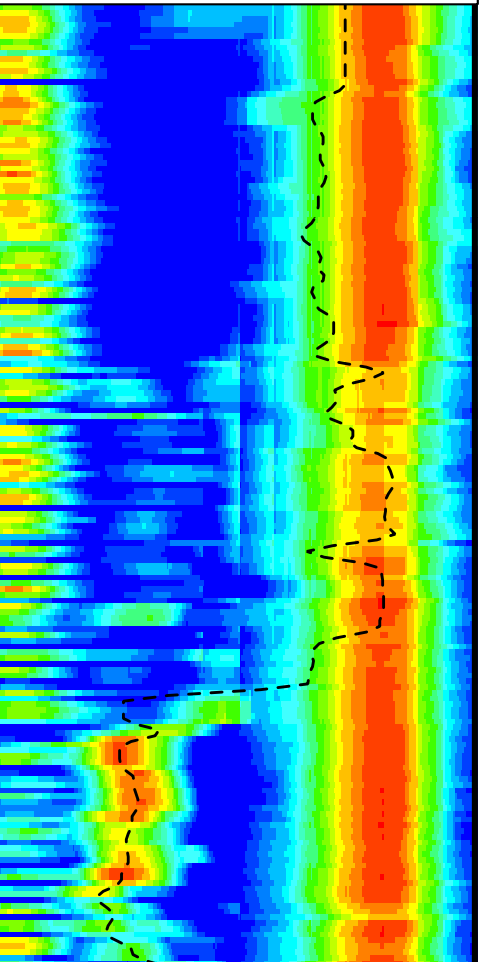
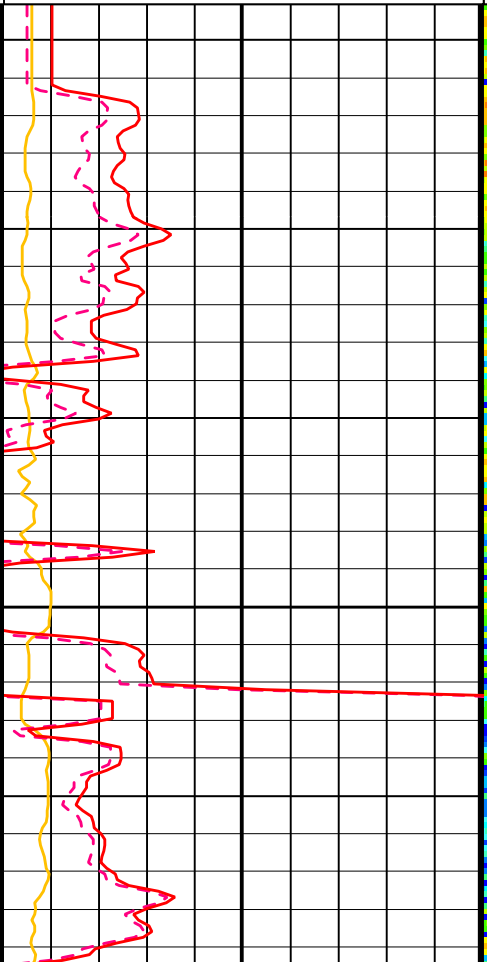
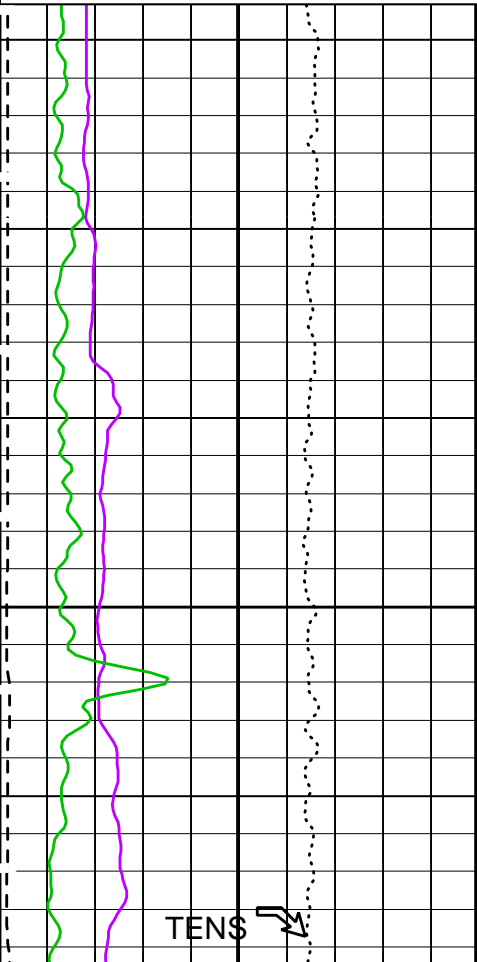
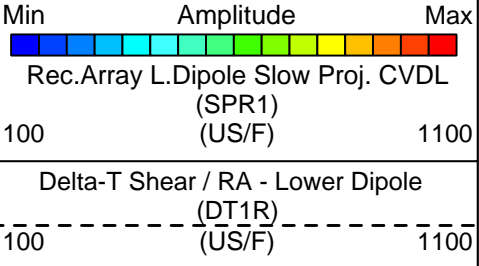
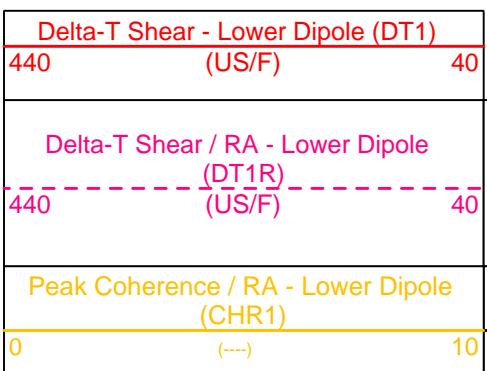
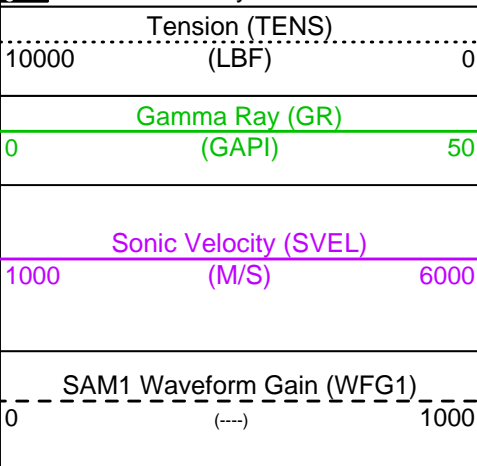
MCM

REPEAT UP LOG

MEST-B	10C0-306	DTA-A	10C0-306
DSST-B	SPC-2277-NUCL_b	SGT-N	10C0-306
DTC-H	10C0-306		

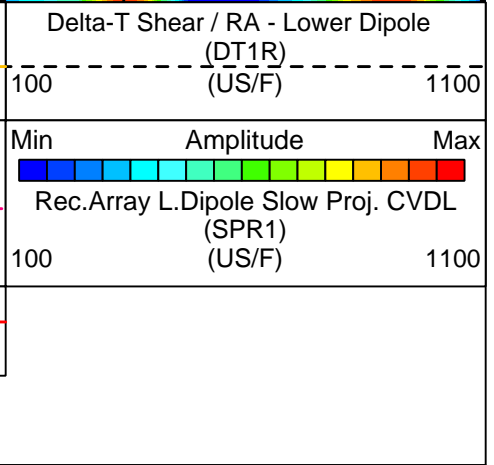
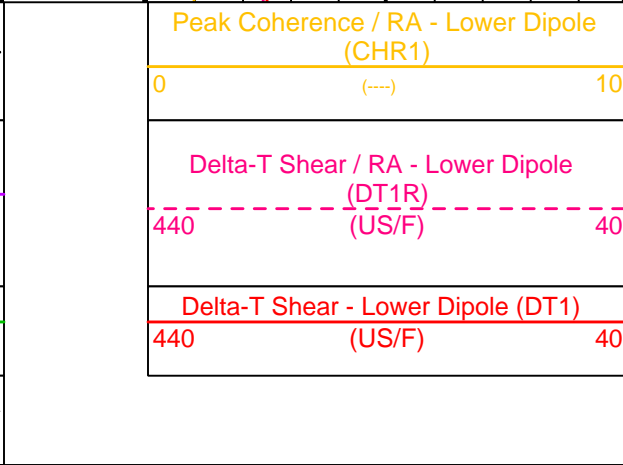
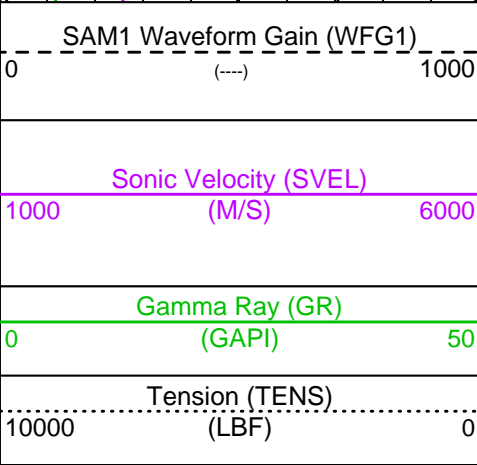
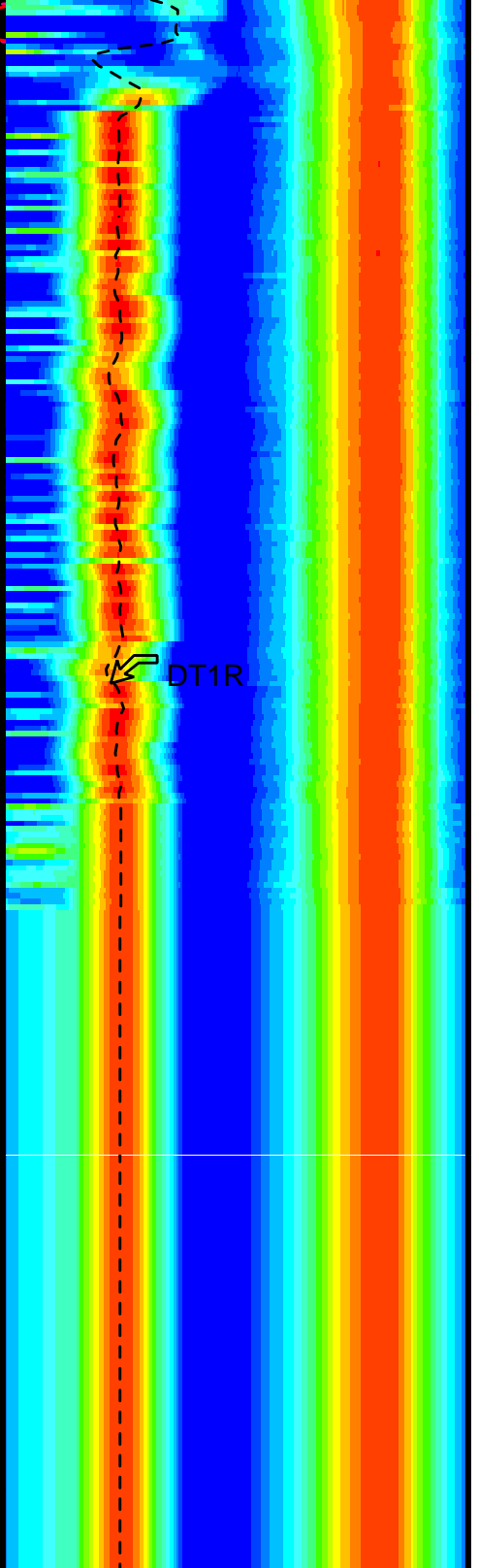
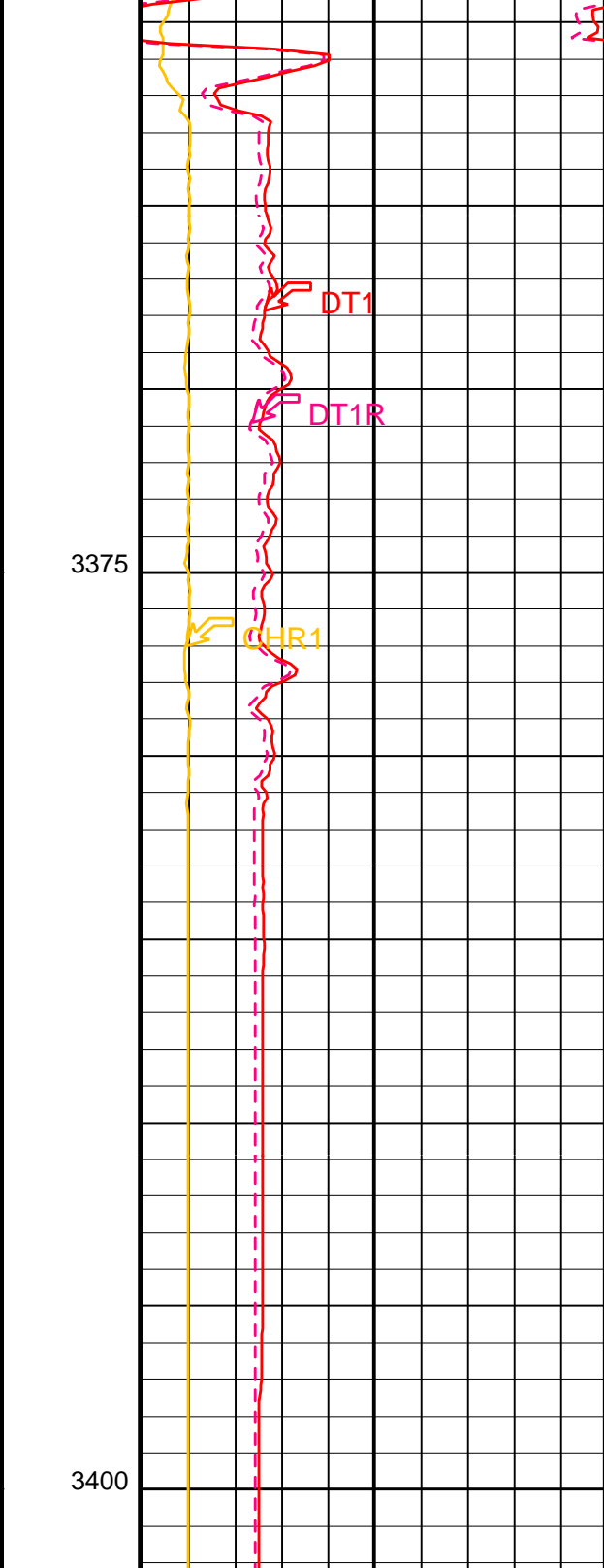
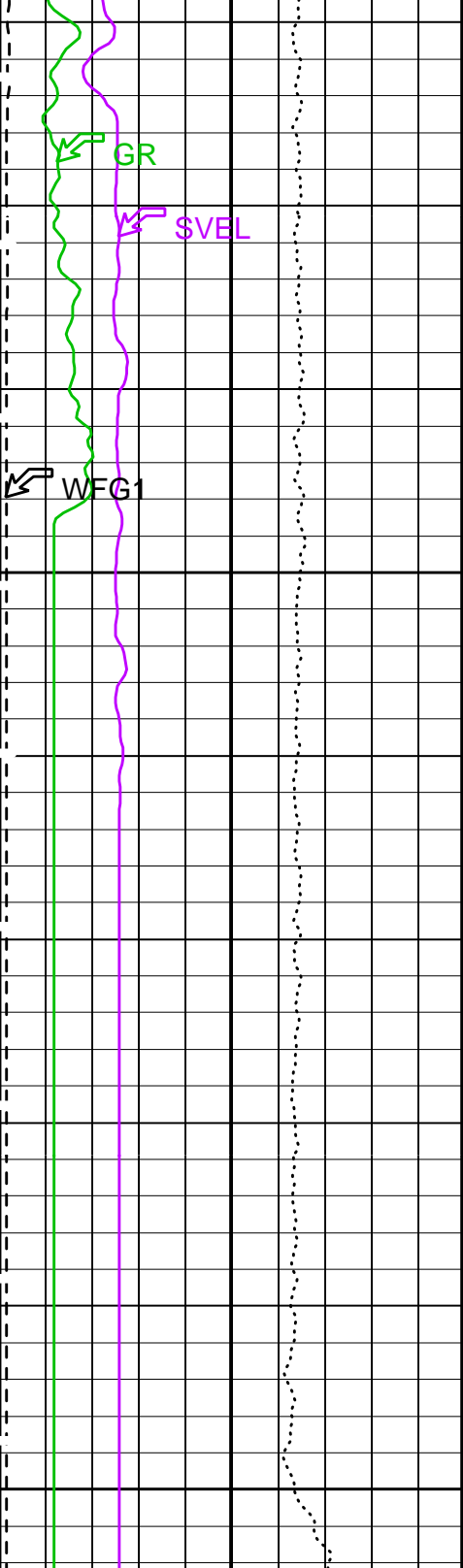
PIP SUMMARY

Time Mark Every 60 S



TENS ↗

3350



Parameters

DLIS Name	Description	Value
DSST-B: Dipole Shear Imager - B		
DDE1	Digitizing Delay 1	0 US
DDEX	Digitizing Delay X	0 US
DLCS	Label Compressional Source - Dipole Shear	USE
DSHL	Label Slowness Lower Limit - Dipole Shear	100 US/F
DSHU	Label Slowness Upper Limit - Dipole Shear	1100 US/F
DSI1	Digitizer Sample Interval 1	40 US
DSIX	Digitizer Sample Interval X	10 US
DTCS	Compressional Delta-T Source for DTCO Channel	PS_COMP
DWC1	Digitizer Word Count 1	512
DWCX	Digitizer Word Count X	512
LTXG	Lower Dipole Transmitter Geometry	156 IN
NWI1	Number Waveform Items 1	8
RX1G	Receiver 1 Geometry	252 IN
RX2G	Receiver 2 Geometry	258 IN
RX3G	Receiver 3 Geometry	264 IN
RX4G	Receiver 4 Geometry	270 IN
RX5G	Receiver 5 Geometry	276 IN
RX6G	Receiver 6 Geometry	282 IN
RX7G	Receiver 7 Geometry	288 IN
RX8G	Receiver 8 Geometry	294 IN
SAM1	DSST Sonic Acquisition Mode 1 - Lower Dipole Mode	LFD_EVEN
SAMX	DSST Sonic Acquisition Mode X - Both Dipoles or Monopole Mode for Expert	OFF
SAS1	STC Sonic Array Status - Lower Dipole	255
SBO1	STC Search Band Offset - Lower Dipole	3000 US
SBW1	STC Search Bandwidth - Lower Dipole	8000 US
SFC1	STC Formation Character - Lower Dipole	SELECTABLE
SFM1	STC Filter - Lower Dipole	B.3-1.5K
SLL1	STC Slowness Lower Limit - Lower Dipole	100 US/F
SST1	STC Slowness Step - Lower Dipole	4 US/F
SSW1	STC Source Waveform - Lower Dipole	WF_SAM1
SUL1	STC Slowness Upper Limit - Lower Dipole	1100 US/F
SWD1	STC Slowness Width - Lower Dipole	40 US/F
TBF1	STC Time for Baseline Fill - Lower Dipole	0 US
TLL1	STC Time Lower Limit - Lower Dipole	600 US
TST1	STC Time Step - Lower Dipole	200 US
TUL1	STC Time Upper Limit - Lower Dipole	15800 US
TWD1	STC Time Width - Lower Dipole	2000 US
TWI1	STC Integration Time Window - Lower Dipole	1600 US
TWSX	Transmitter Waveform Select X	0
WFM1	Waveform Mode 1	W1

Format: DSST_LOWER_DIPOLE_VDL_COLOR Vertical Scale: 1:200 Graphics File Created: 11-Apr-2003 13:46

OP System Version: 10C0-306 MCM

MEST-B	10C0-306	DTA-A	10C0-306
DSST-B	SPC-2277-NUCL_b	SGT-N	10C0-306
DTC-H	10C0-306		

Output DLIS Files

DEFAULT	FMS_DSI_033LUP	FN:14	PRODUCER	11-Apr-2003 13:46
FMS_CUST	FMS_DSI_033LUP	FN:15	PRODUCER	11-Apr-2003 13:46

Company: Lamont Doherty



Well: ODP Leg 208, Site 1265A

Field: Walvis Ridge

Country: Africa

Ocean: Atlantic Ocean

Dipole Sonic

