

**Company:** Lamont Doherty

**Well:** ODP Leg 208, Site 1265A

**Field:** Walvis Ridge

**Country:** Africa **Ocean:** Atlantic Ocean

## Formation Micro-Scanner

Country: Africa		Elev.: K.B. 11.3 m	
Field: Walvis Ridge		G.L. -3071 m	
Location: Rig- Joides Resolution		D.F. 11 m	
Well: ODP Leg 208, Site 1265A		Elev.: 0 m	
Company: Lamont Doherty		11.3 m above Perm. Datum	
<b>LOCATION</b>			
Rig- Joides Resolution			
Permanent Datum: _____		GROUND LEVEL _____	
Log Measured From: DES _____		DES _____	
Drilling Measured From: DES _____		DES _____	
API Serial No. _____	Max. Hole Devi. _____	Longitude 2.0397E	Latitude 28.8350 S

Logging Date	4/10/03		
Run Number	1		
Depth Driller	3392 m		
Schlumberger Depth	3397 m		
Bottom Log Interval	3396 m		
Top Log Interval	3136.1 m		
Casing Driller Size @ Depth	0.000 in @ 3140 m		
Casing Schlumberger	3144 m		
Bit Size	11.438 in		
Type Fluid In Hole	Sepiolite		
Density	Viscosity		
Fluid Loss	PH	1.066 g/cm3	
Source Of Sample			
RM @ Measured Temperature	0.322 ohm.m @		23 degC
RMF @ Measured Temperature	@		@
RMC @ Measured Temperature	@		@
Source RMF	RMC		
RM @ MRT	RMF @ MRT	0.362 @ 18	@ 18
Maximum Recorded Temperatures	18 degC		
Circulation Stopped	Time	4/10/03	1200
Logger On Bottom	Time	4/10/03	See Log
Unit Number	Location	99	Houston
Recorded By	Steve Kittredge		
Witnessed By	Philippe Galliot		

Logging Date				Run 1	Run 2	Run
Run Number						
Depth Driller						
Schlumberger Depth						
Bottom Log Interval						
Top Log Interval						
Casing Driller Size @ Depth				@		
Casing Schlumberger						
Bit Size						
Type Fluid In Hole						
Density	Viscosity					
Fluid Loss	PH					
Source Of Sample						
RM @ Measured Temperature			@			
RMF @ Measured Temperature	@		@			
RMC @ Measured Temperature	@		@			
Source RMF	RMC					
RM @ MRT	RMF @ MRT	@	@			
Maximum Recorded Temperatures						
Circulation Stopped	Time					
Logger On Bottom	Time					
Unit Number	Location					
Recorded By						
Witnessed By						

DISCLAIMER

THE USE OF AND RELIANCE UPON THIS RECORDED-DATA BY THE HEREIN NAMED COMPANY (AND ANY OF ITS AFFILIATES, PARTNERS, REPRESENTATIVES, AGENTS, CONSULTANTS AND EMPLOYEES) IS SUBJECT TO THE TERMS AND CONDITIONS AGREED UPON BETWEEN SCHLUMBERGER AND THE COMPANY, INCLUDING: (a) RESTRICTIONS ON USE OF THE RECORDED-DATA; (b) DISCLAIMERS AND WAIVERS OF WARRANTIES AND REPRESENTATIONS REGARDING COMPANY'S USE OF AND RELIANCE UPON THE RECORDED-DATA; AND (c) CUSTOMER'S FULL AND SOLE RESPONSIBILITY FOR ANY INFERENCE DRAWN OR DECISION MADE IN CONNECTION WITH THE USE OF THIS RECORDED-DATA.

OTHER SERVICES1  
 OS1: DITE/HLDS/APS/HNGS  
 OS2: WST3  
 OS3:  
 OS4:  
 OS5:

OTHER SERVICES2  
 OS1:  
 OS2:  
 OS3:  
 OS4:  
 OS5:

REMARKS: RUN NUMBER 1  
 Hole cored with APC/XCB  
 All depths in Meters Below Rig Floor (MBRF).  
 Hole flushed with Sepiolite  
 Sea Floor Driller 3071 MBRF.  
  
 Total Depth Driller- 3392 MBRF.  
 Total Depth Logger- 3397 MBRF.  
 Casing Bottom Driller 3140 MBRF.  
 Casing Bottom Logger- 3144 MBRF.  
 Large Hole above 3225 MBRF.

REMARKS: RUN NUMBER 2

RUN 1  
 SERVICE ORDER #:  
 PROGRAM VERSION: 10C0-306  
 FLUID LEVEL:

RUN 2  
 SERVICE ORDER #:  
 PROGRAM VERSION:  
 FLUID LEVEL:

LOGGED INTERVAL	START	STOP


LOGGED INTERVAL	START	STOP

EQUIPMENT DESCRIPTION

RUN 1  
 SURFACE EQUIPMENT  
 GSR-U/Y  
 WITM (DTS)-A

RUN 2

DOWNHOLE EQUIPMENT

LEH-QT		31.27
LEH-QT		
DTC-H	CTEM	30.10
ECH-KC 9841	TelStatus	30.38
	ToolStatu	29.46
SGT-N	Gamma Ray	29.18
SGH-K 2450		29.46

SGC-TB 9585  
SGD-TAA

AH-MCDU  
AH-MCDU

27.79

DSST-B  
SPAC-B 8128  
ECH-SD 8127  
SMDR-BD 8076  
SMDX-AA 66

25.67

PWF 11.19

AH-MCDL  
AH-MCDL

11.19

DTA-A  
ECH-KE 8455  
DTA-A 8261

8.90

MEST-B  
MEAH-B 497  
MEAC-A 875  
MEPH-A 769  
GPIC-A 719  
MEPC-AB 877  
MEDS-B 702

7.68

MEDR MEAC  
MEPC MEDS-B  
HV DF  
Tension GPIT  
TOOL ZERO

0.46

0.00

MAXIMUM STRING DIAMETER 4.50 IN  
MEASUREMENTS RELATIVE TO TOOL ZERO  
ALL LENGTHS IN METERS

FMS\_DSI\_034LUP FMS4 .STAT [C7661 FMS4]  
 Horizontal Scale: 1 : 14.373  
 Orientation North

FMS\_DSI\_034LUP FMS4 .DYNA [C766175]  
 Horizontal Scale: 1 : 14.373  
 Orientation North

C1 .BASIC  
 0 (in) 16

0 120 240 360

0 120 240 360

Resistive FMS4 Image Conductive

Resistive FMS4 Image Conductive

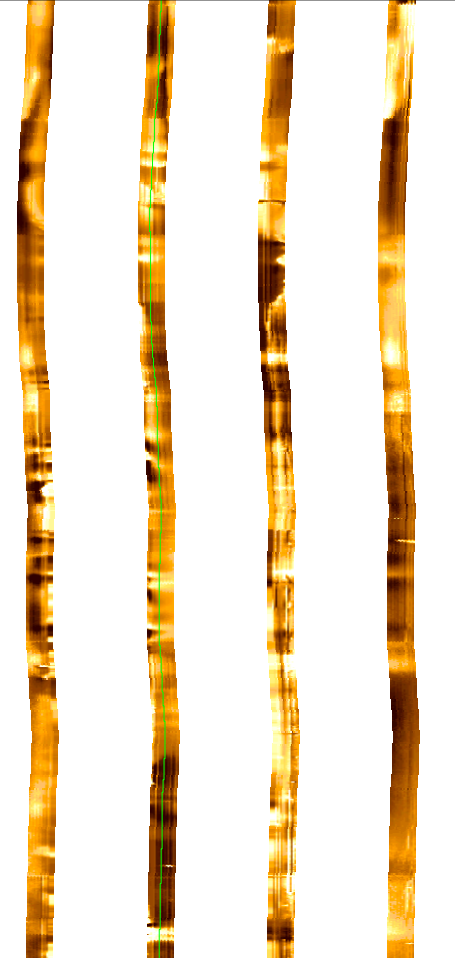
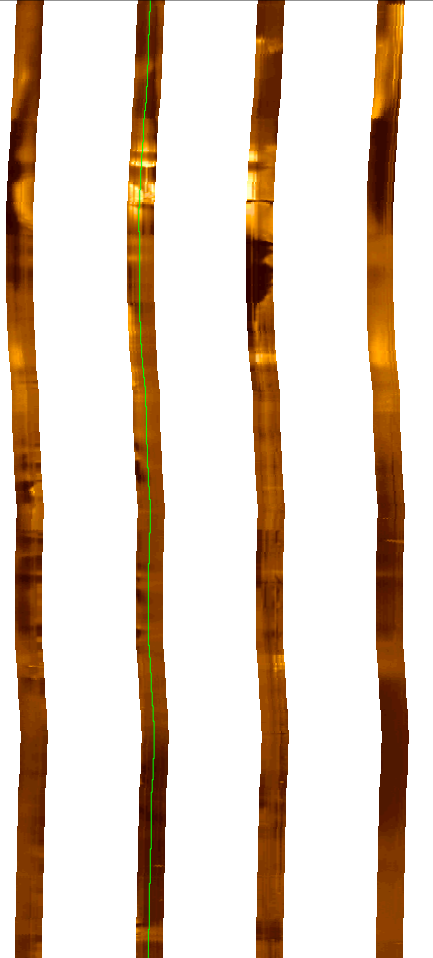
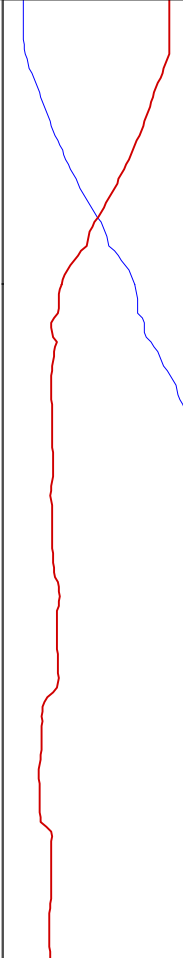


MD  
 1 : 60  
 m

HGR .BASI  
 0 (gAPI) 20

C2 .BASIC  
 16 (in) 0

3175



3180

3185

3190

3195



3200

3205

3210



3215

3220

3225



3230

3235

3240

3245





3250
3255
3260

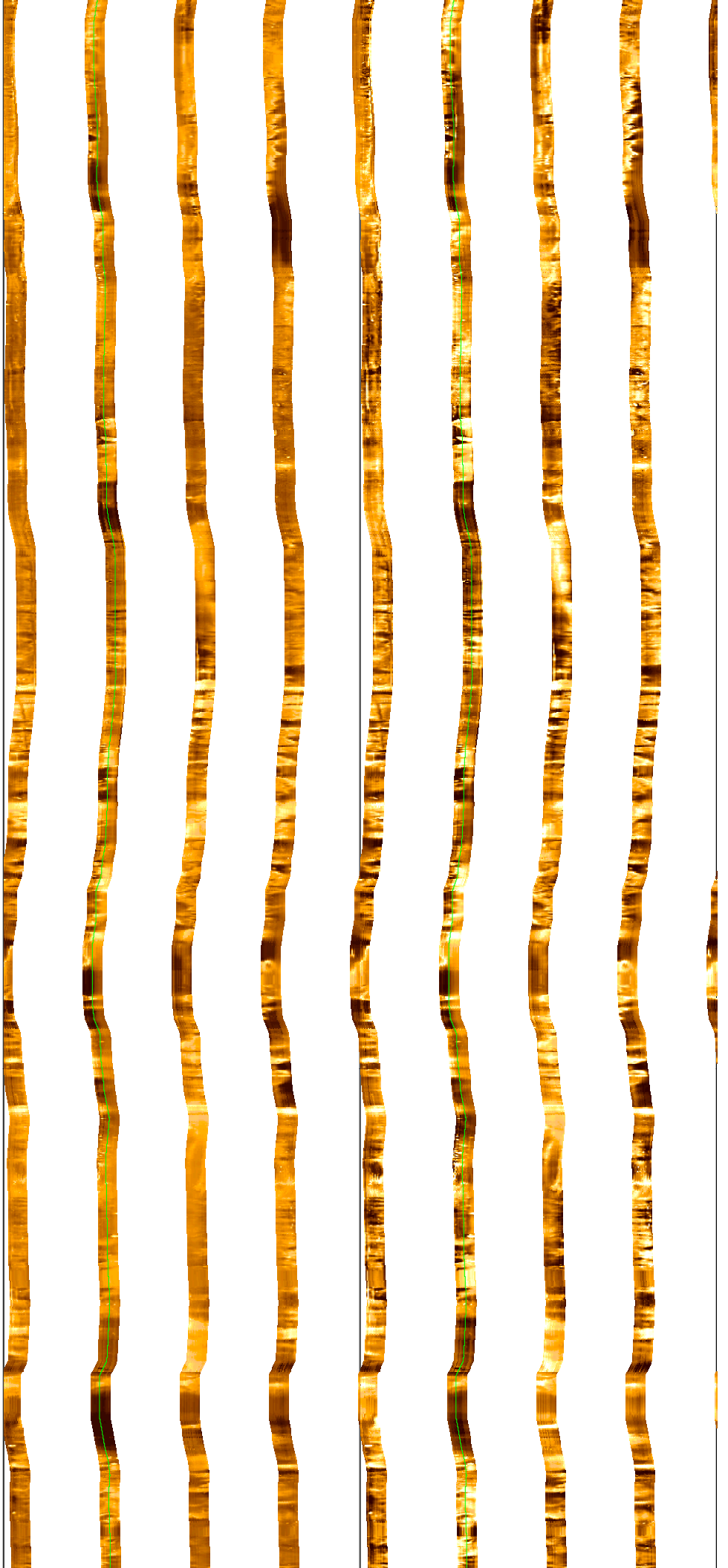
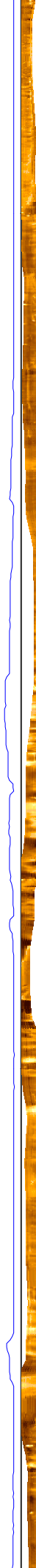


3265

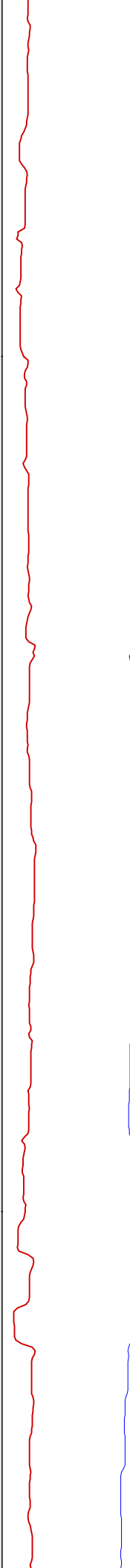
3270

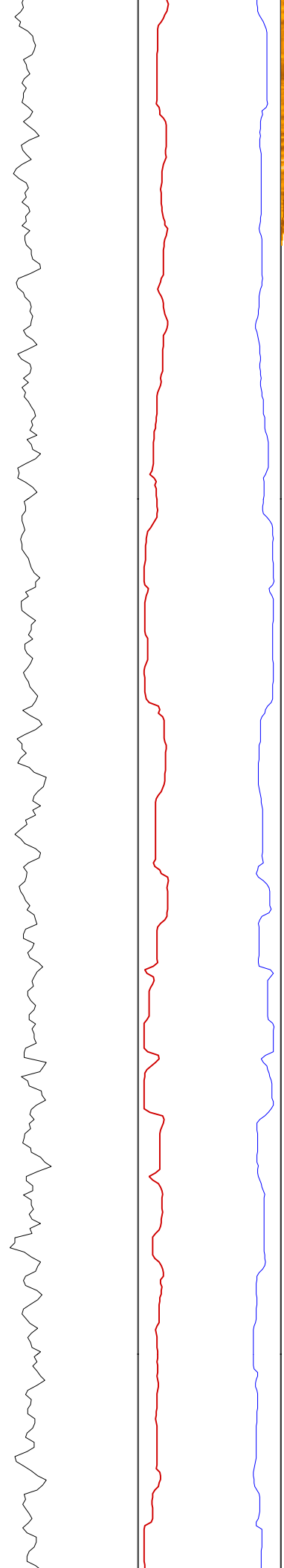
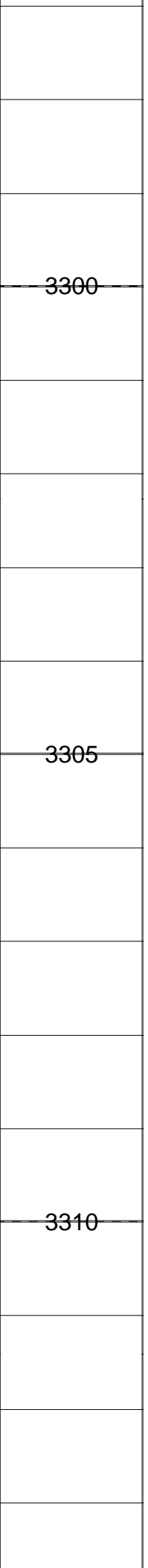
3275

3280

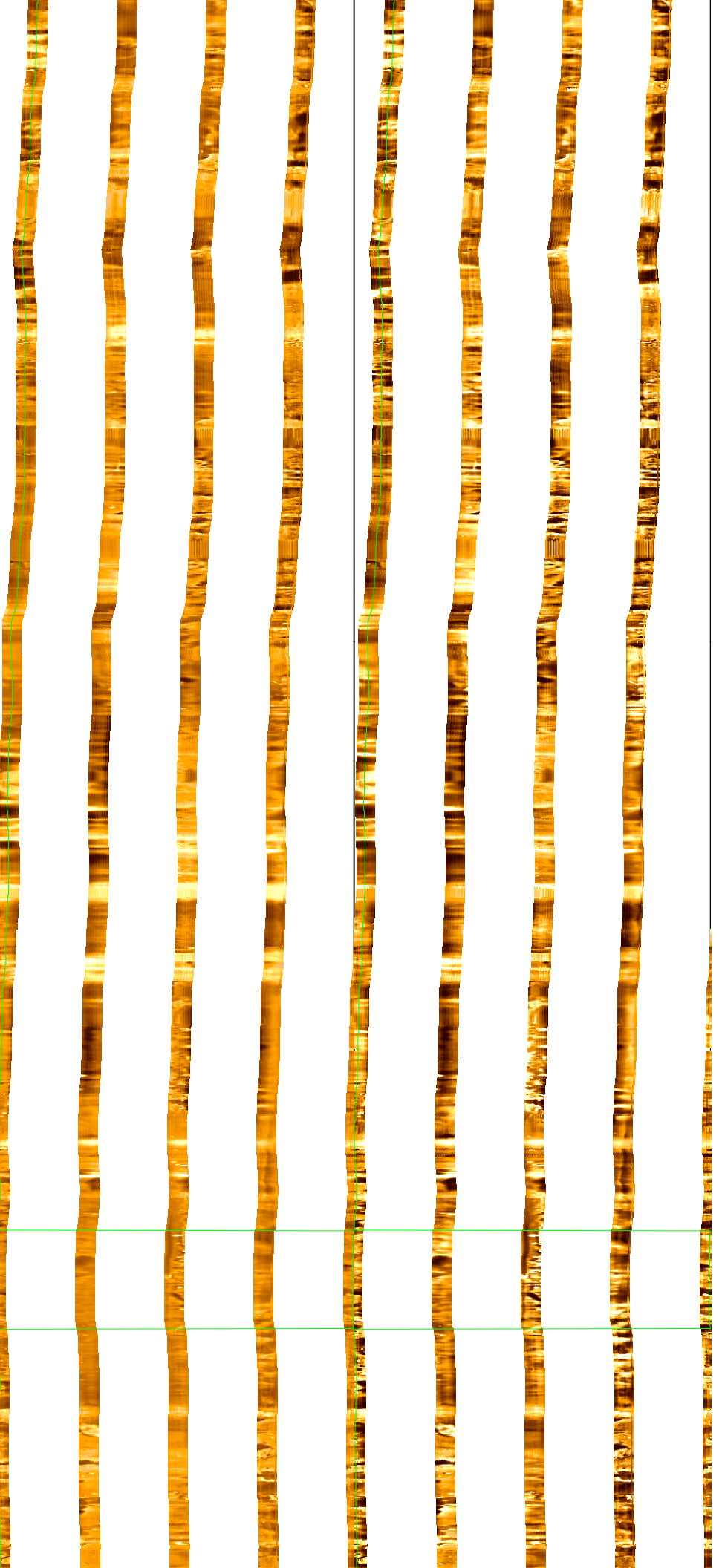


3285
3290
3295

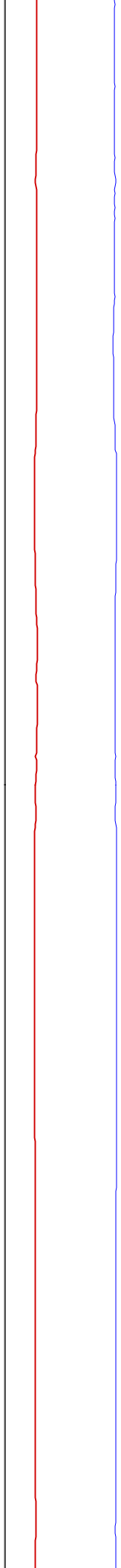




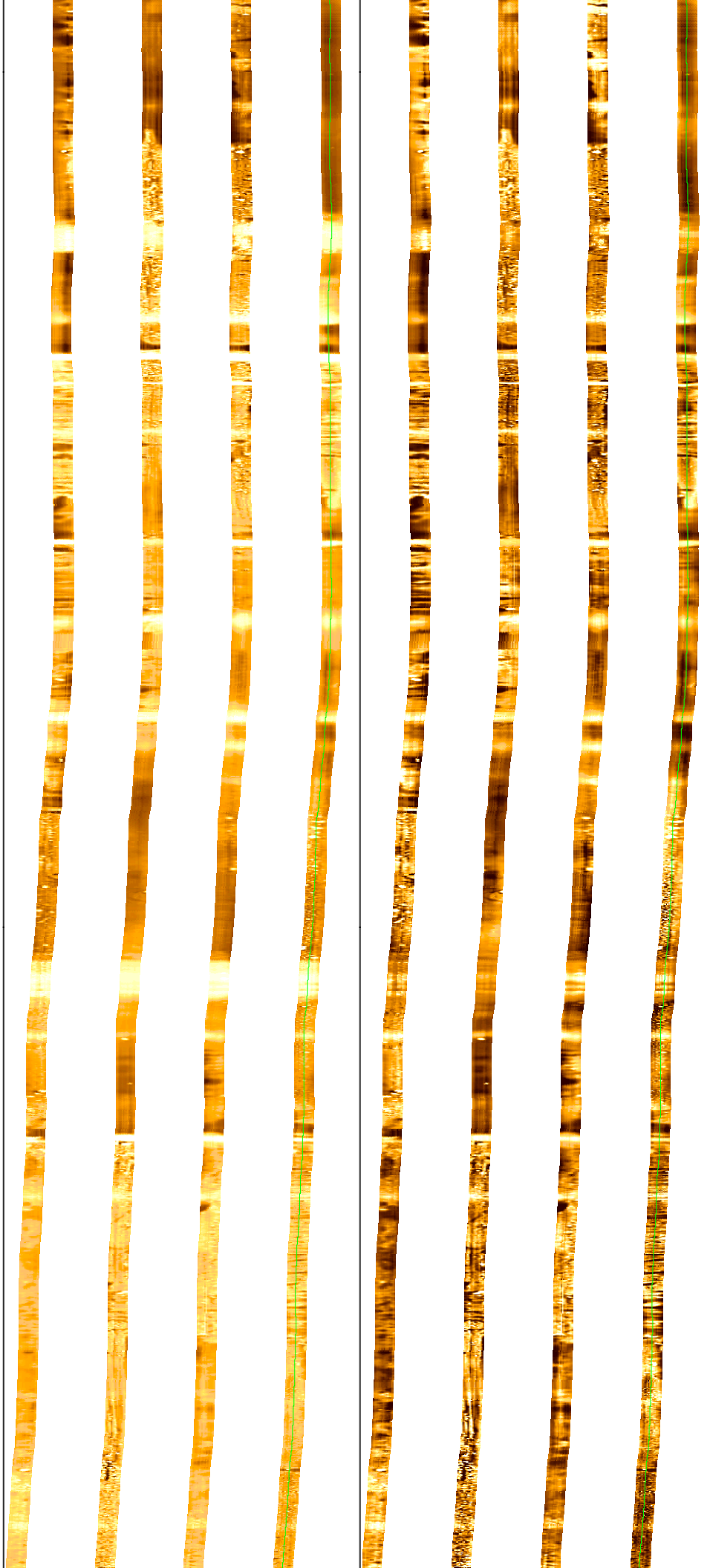
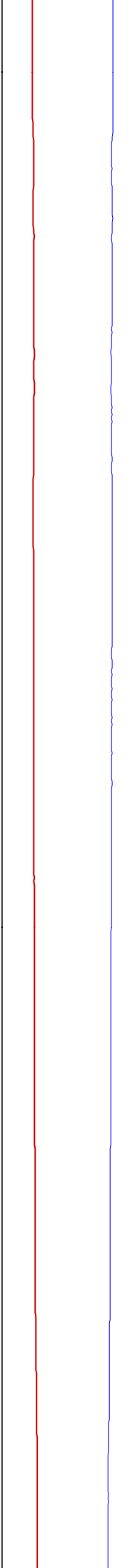
3315
3320
3325
3330



3335
3340
3345



3350
3355
3360

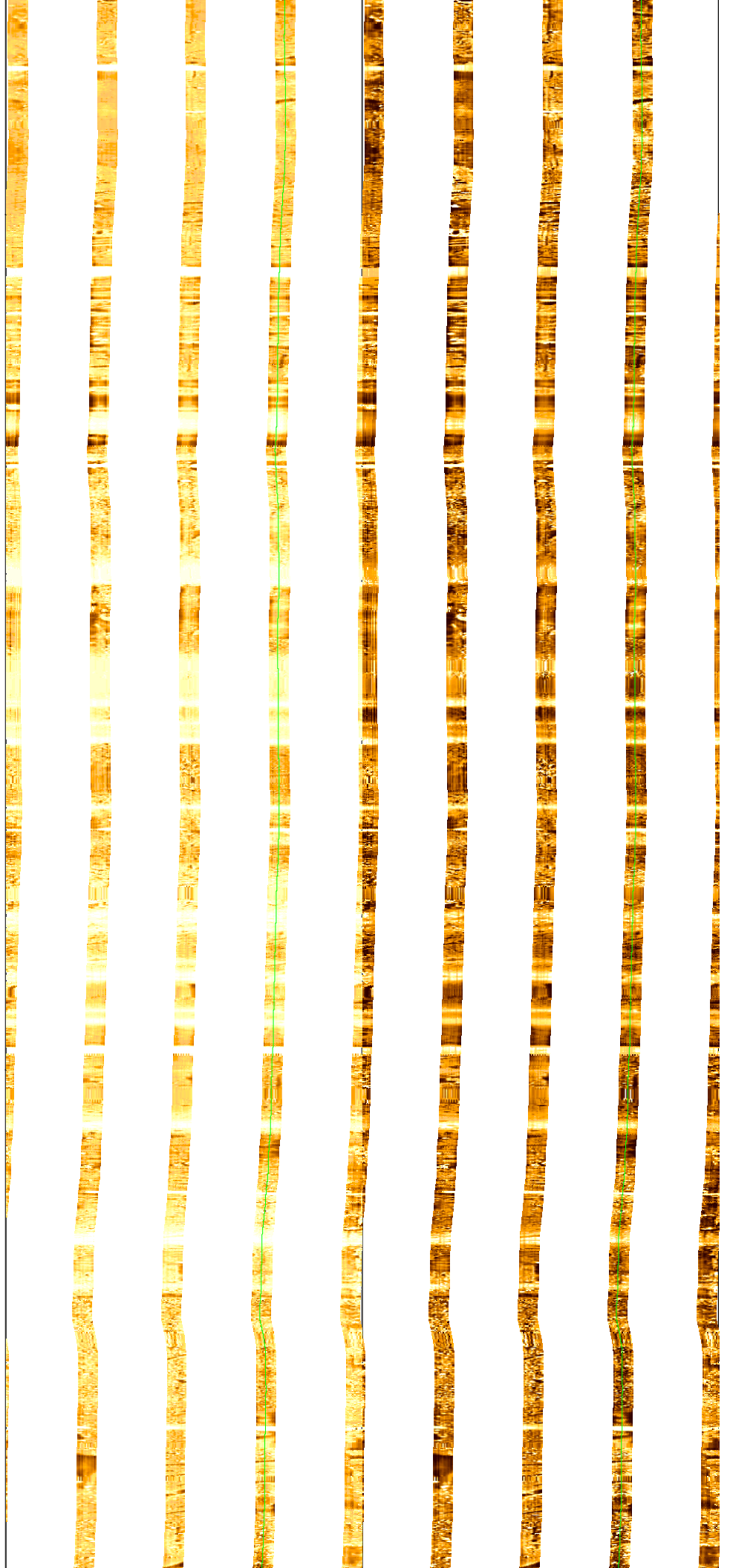


3365

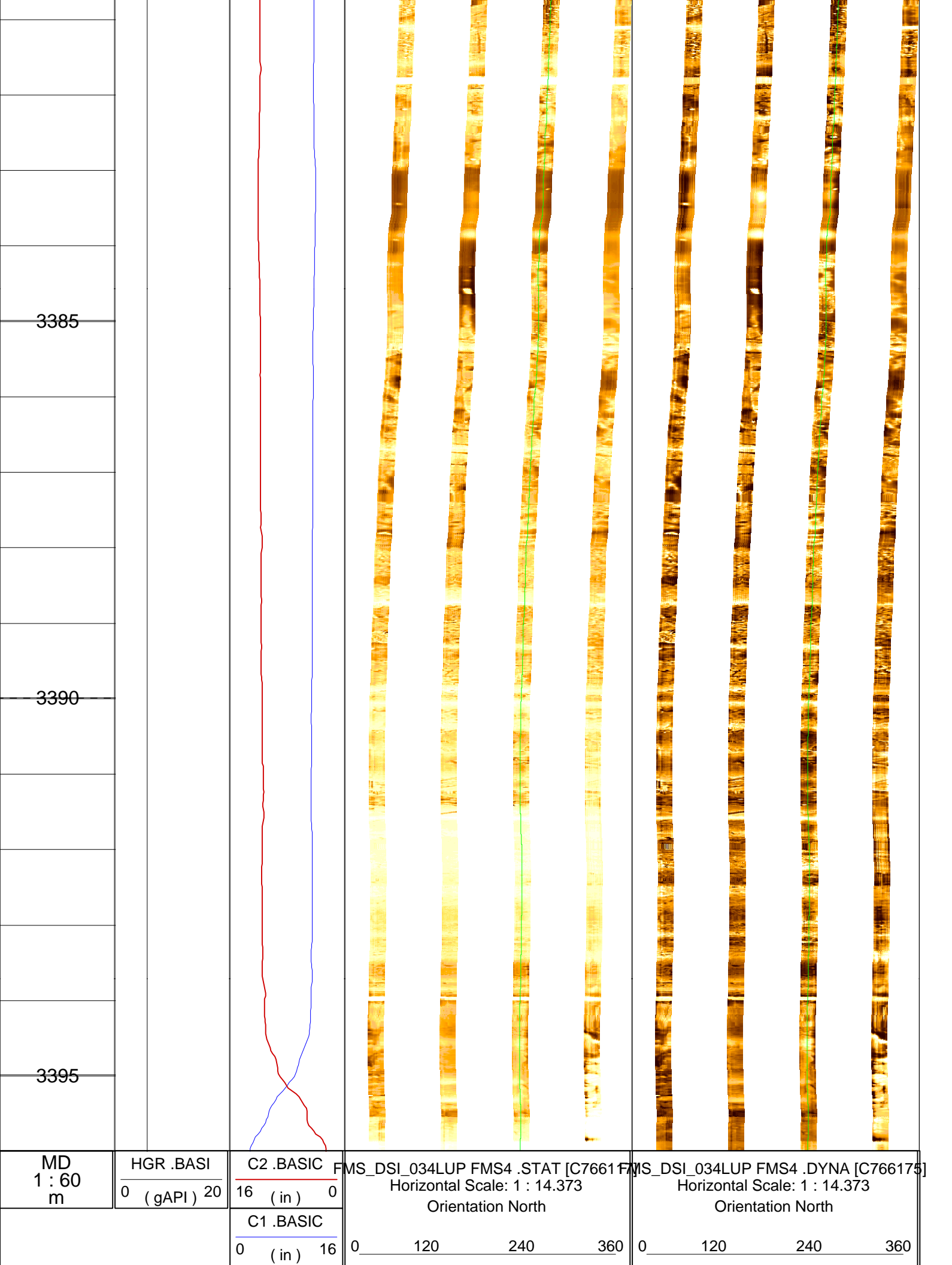
3370

3375

3380







3385

3390

3395

MD  
1 : 60  
m

HGR .BASI  
0 (gAPI) 20

C2 .BASIC  
16 (in) 0

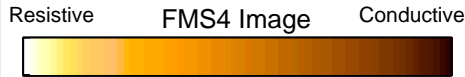
C1 .BASIC  
0 (in) 16

FMS\_DSI\_034LUP FMS4 .STAT [C766175]  
Horizontal Scale: 1 : 14.373  
Orientation North

0 120 240 360

FMS\_DSI\_034LUP FMS4 .DYNA [C766175]  
Horizontal Scale: 1 : 14.373  
Orientation North

0 120 240 360



Company: Lamont Doherty

**Schlumberger**

Well: ODP Leg 208, Site 1265A

Field: Walvis Ridge

Country: Africa

Ocean: Atlantic Ocean

Formation Micro-Scanner