



**DISCLAIMER**

THE USE OF AND RELIANCE UPON THIS RECORDED-DATA BY THE HEREIN NAMED COMPANY (AND ANY OF ITS AFFILIATES, PARTNERS, REPRESENTATIVES, AGENTS, CONSULTANTS AND EMPLOYEES) IS SUBJECT TO THE TERMS AND CONDITIONS AGREED UPON BETWEEN SCHLUMBERGER AND THE COMPANY, INCLUDING: (a) RESTRICTIONS ON USE OF THE RECORDED-DATA; (b) DISCLAIMERS AND WAIVERS OF WARRANTIES AND REPRESENTATIONS REGARDING COMPANY'S USE OF AND RELIANCE UPON THE RECORDED-DATA; AND (c) CUSTOMER'S FULL AND SOLE RESPONSIBILITY FOR ANY INFERENCE DRAWN OR DECISION MADE IN CONNECTION WITH THE USE OF THIS RECORDED-DATA.


OTHER SERVICES1 OS1: MESTB/DSI/SGTN OS2: WST3 OS3: OS4: OS5:	OTHER SERVICES2 OS1: OS2: OS3: OS4: OS5:
---	---

REMARKS: RUN NUMBER 1 Hole Cored with APC/XCB All Depths in Meters Below Rig Floor (MBRF) Hole flushed with Sepiolite Sea Floor Driller 3071 MBRF Total Depth Driller 3342 MBRF Total Depth Logger- 3397 MBRF. Casing Bottom Driller- 3140 MBRF Casing Bottom Logger- 3145 MBRF. APS Output erratic in larger section of hole. APS curve not displayed in larger section of hole. Unable to pick sea floor off log.	REMARKS: RUN NUMBER 2
--	-----------------------

RUN 1			RUN 2		
SERVICE ORDER #:			SERVICE ORDER #:		
PROGRAM VERSION: 10C0-306			PROGRAM VERSION:		
FLUID LEVEL:			FLUID LEVEL:		
LOGGED INTERVAL	START	STOP	LOGGED INTERVAL	START	STOP

**EQUIPMENT DESCRIPTION**

RUN 1		RUN 2	
<b>SURFACE EQUIPMENT</b>			
SFT-281 24 SFT-178 4722 GSR-U 135 WITM (DTS)-A			

<b>DOWNHOLE EQUIPMENT</b>			
LEH-QT		28.69	
LEH-QT			
DTC-H	CTEM	27.52	27.80
ECH-KC 9343	TelStatus ToolStatu	26.89	
HNGS-BA	Upper_1	26.19	26.89
HNGS BA 77	Lower_2	25.98	

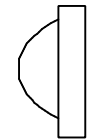
HNGS-BA 77

HNSH-BA 79

Lower\_2

25.90

ILE-D  
ILE-D



24.39

APS-BA  
APS-BA 22  
APH-AC 22  
MNTR-F 4185

Status  
Minitron  
Near TD  
Near Arr  
Near  
Far Arr  
Far  
Far TD

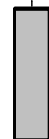


21.95

19.51  
19.43  
19.30  
19.20

NPLC-B  
NPLC-B 79  
NPH-B 82

Status

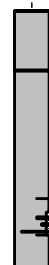


18.01

16.78

HLDS  
GSR-Z 1846  
HLDV-D 35  
HLDS-D 45  
HEH-H 35  
HLDP-C 45

Caliper  
SS LS Status



15.56

11.51

DTA-A  
ECH-KE 8231  
DTA-A 8231



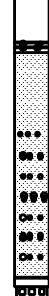
10.74

DIT-E  
DIC-EB 438  
MIH-ZA 417  
DIS-HB 442



9.52

SP  
Deep Ind  
Aux Meas SFL  
Med Ind



3.15  
2.90  
1.98  
1.83

Status HV DF  
Tension



0.00

TOOL ZERO

MAXIMUM STRING DIAMETER 3.88 IN  
MEASUREMENTS RELATIVE TO TOOL ZERO  
ALL LENGTHS IN METERS

### Output DLIS Files

DEFAULT	PI_LDL_APS_NGS_028LUP	FN:5	PRODUCER	11-Apr-2003 05:53	3397.0 M	3054.1 M
TCOMBO_CUST	PI_LDL_APS_NGS_028LUP	FN:6	PRODUCER	11-Apr-2003 05:53	3397.0 M	3054.1 M

OP System Version: 10C0-306  
MCM

**MAIN UP LOG**

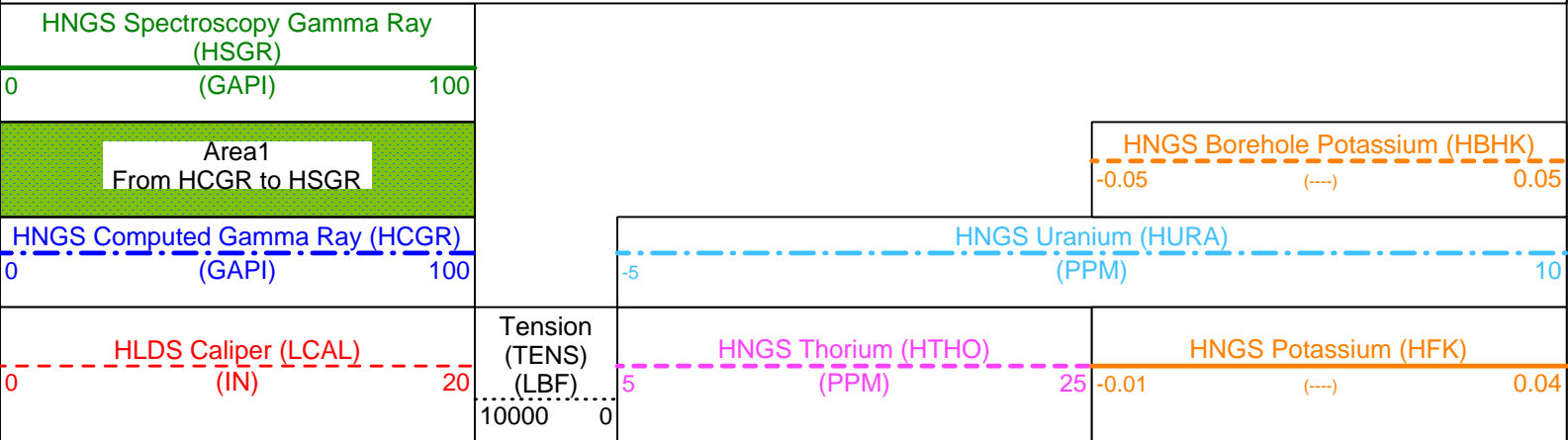
DIT-E	10C0-306	DTA-A	10C0-306
HLDS	SPC-2277-NUCL_b	NPLC-B	OP10-KP1
APS-BA	SPC-2277-NUCL_b	HNGS-BA	SPC-2277-NUCL_b
DTC-H	10C0-306		

### Changed Parameter Summary

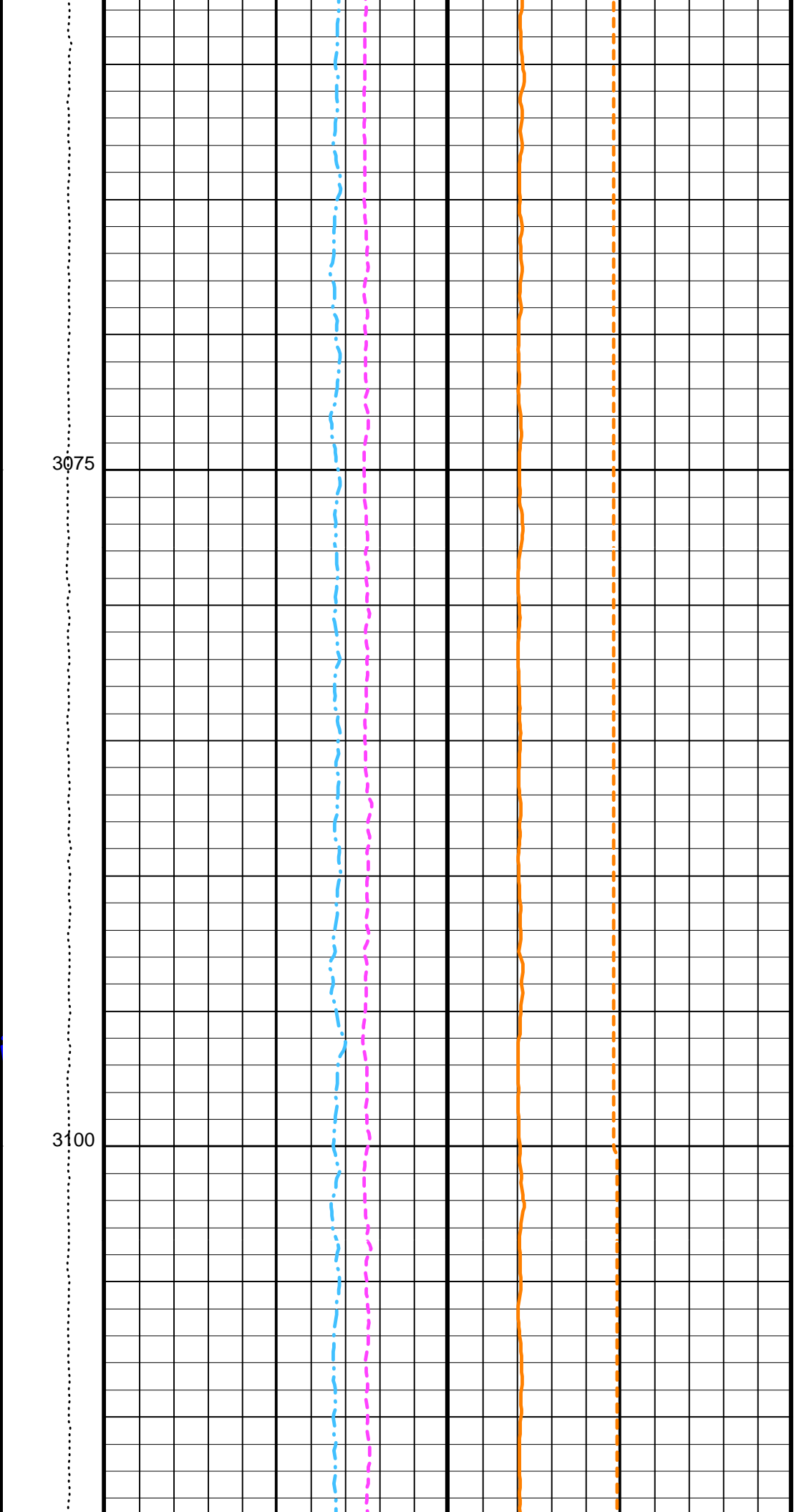
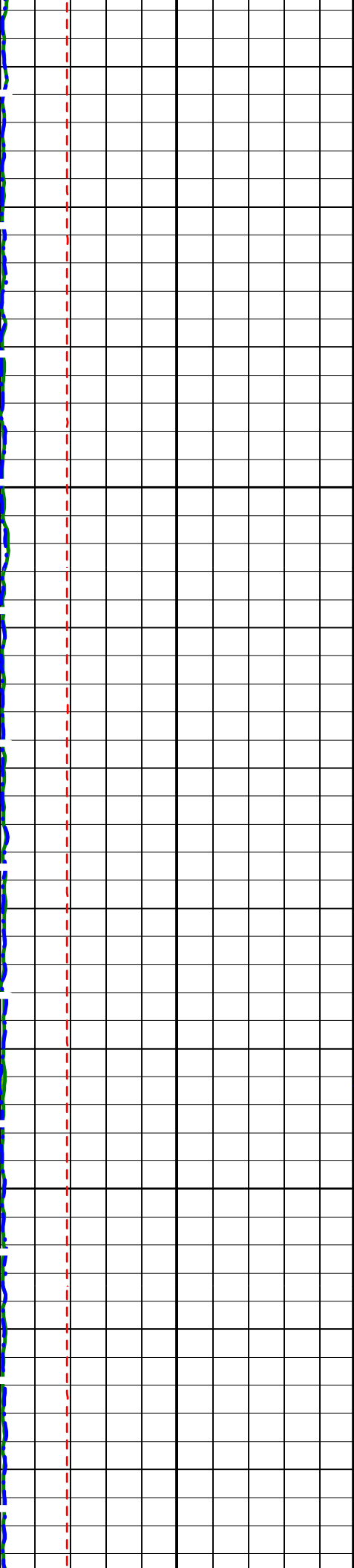
DLIS Name	New Value	Previous Value	Depth & Time
GCSE	BS	LCAL	3177.2 06:49:06

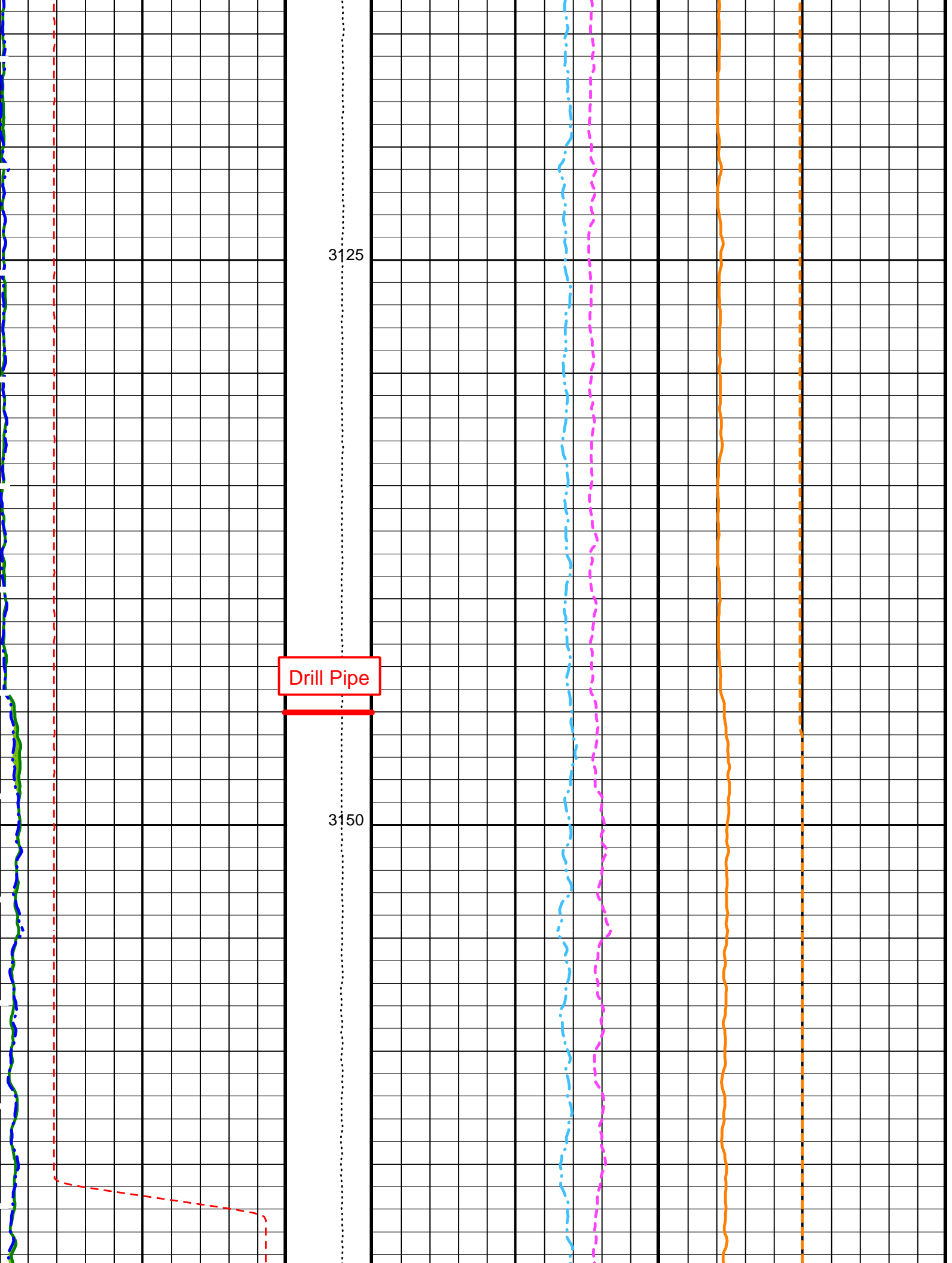
#### PIP SUMMARY

▶ Time Mark Every 60 S



**Last Reading**

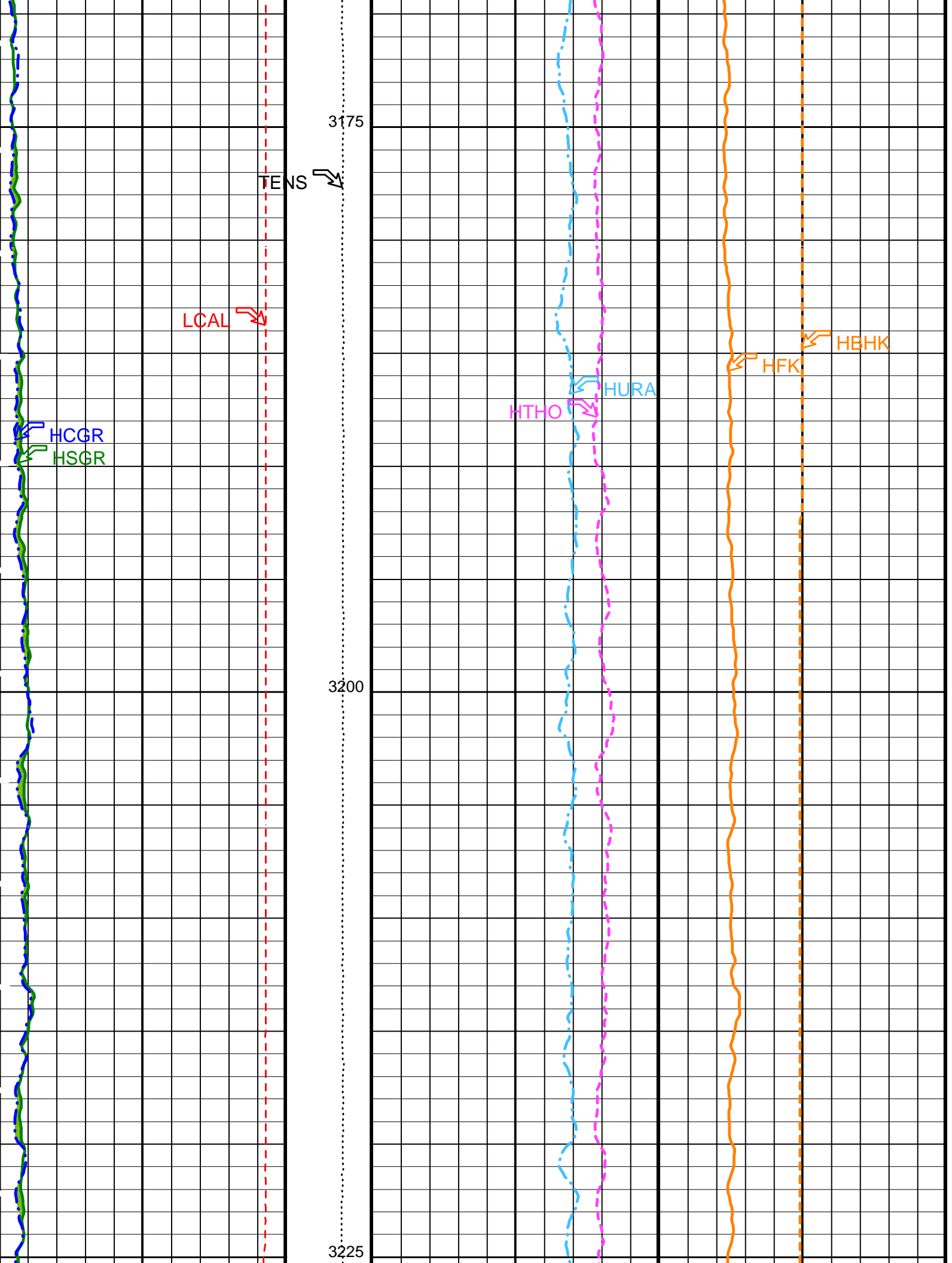


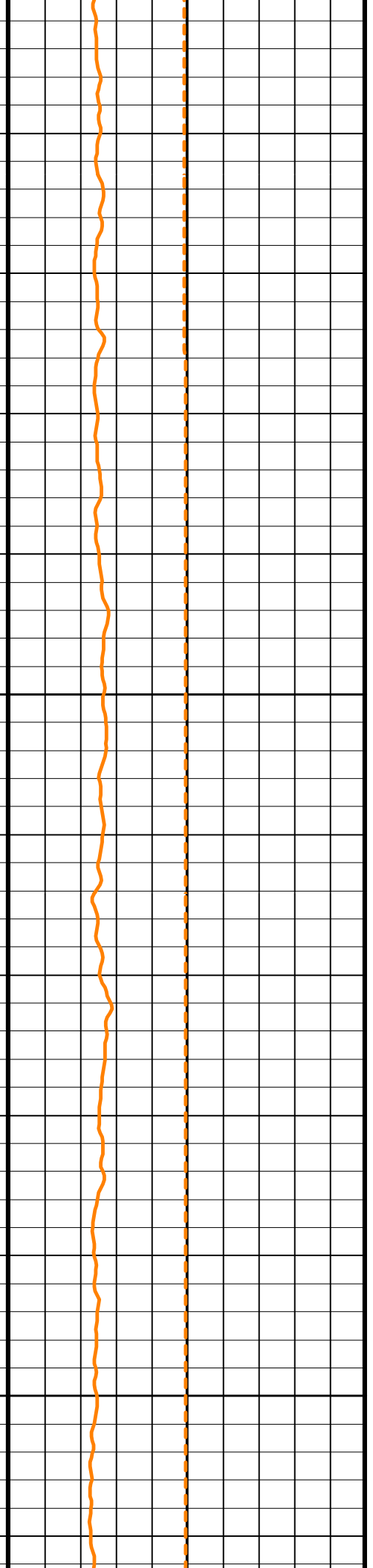
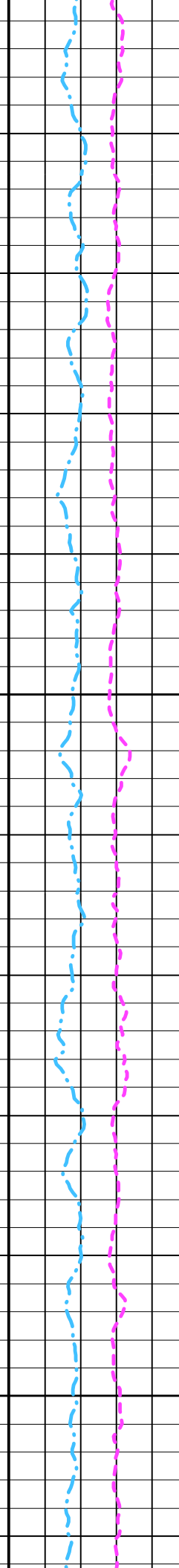
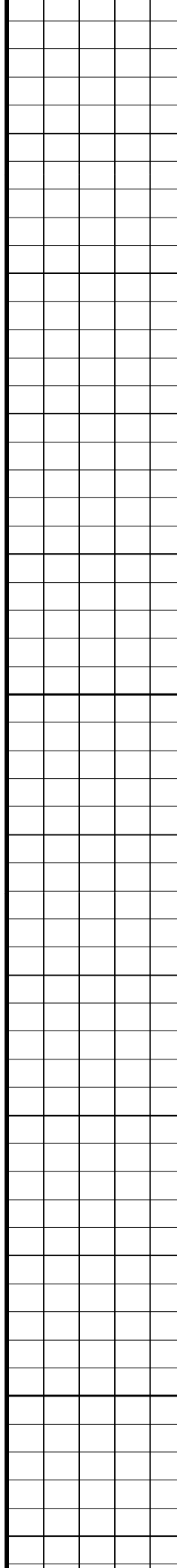
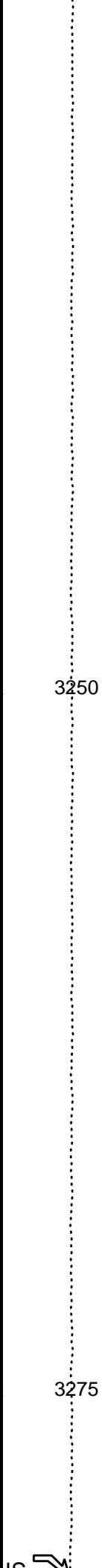
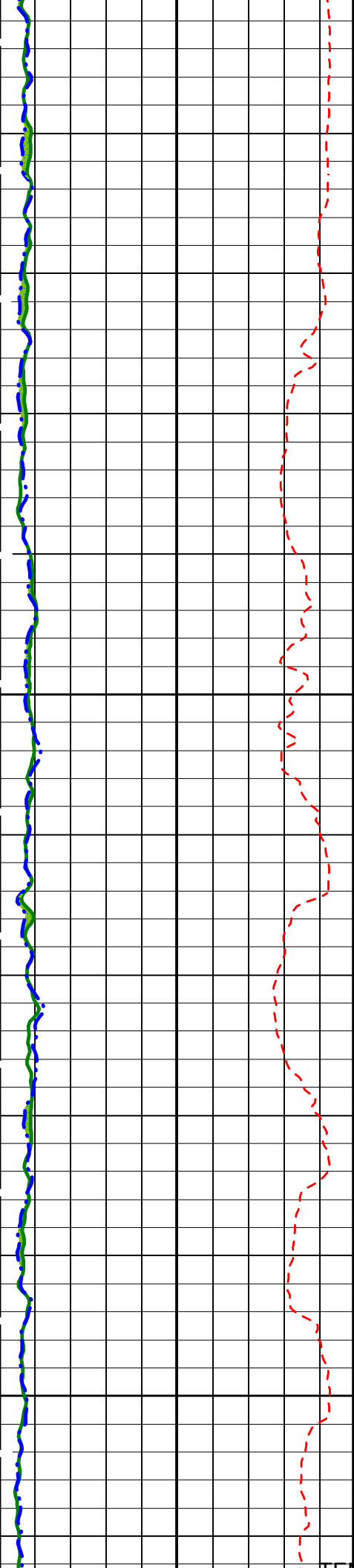


3125

Drill Pipe

3150



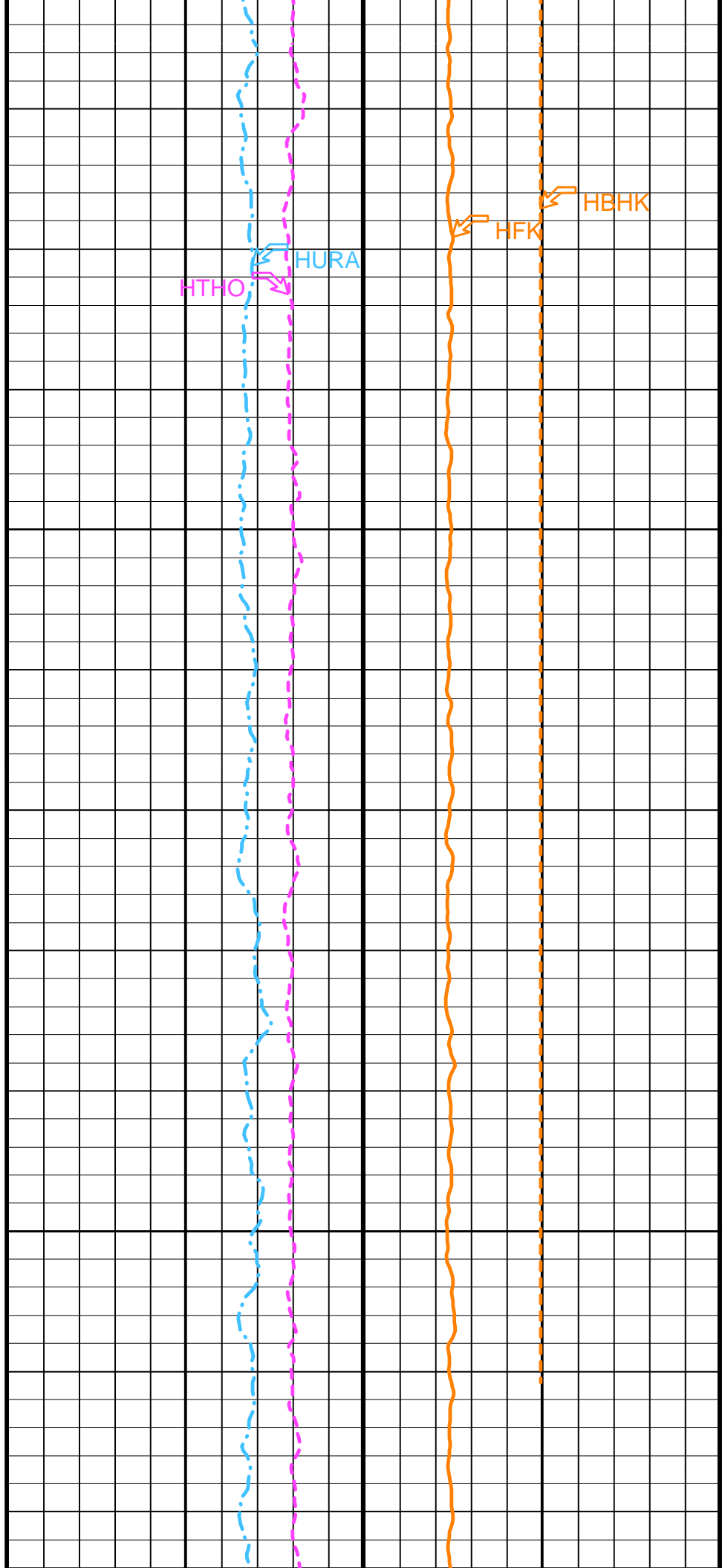
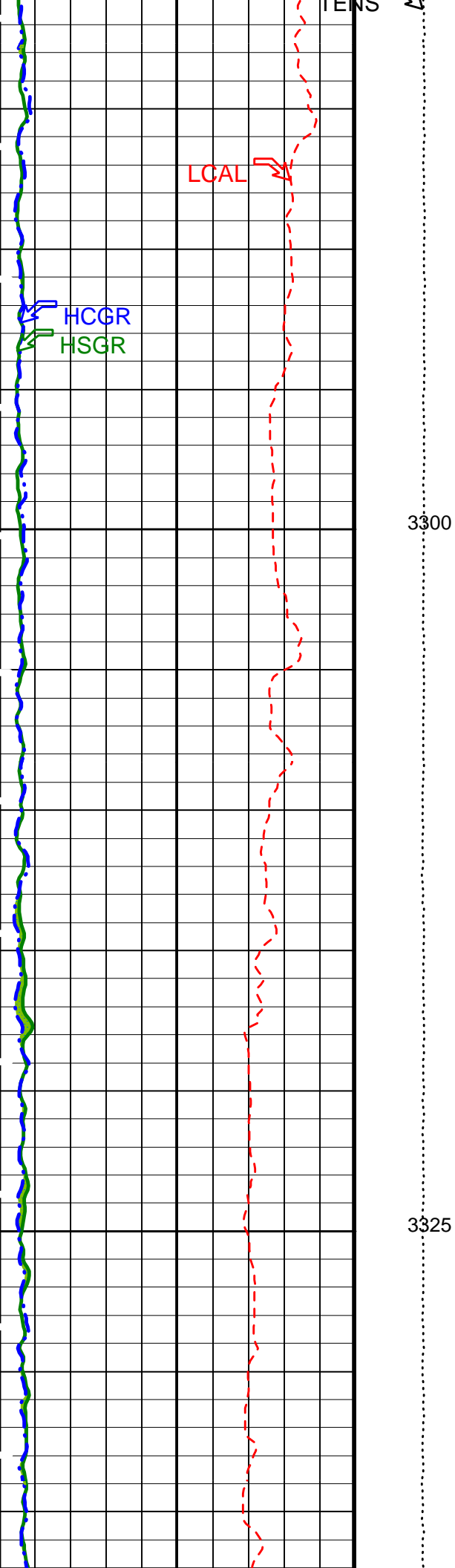


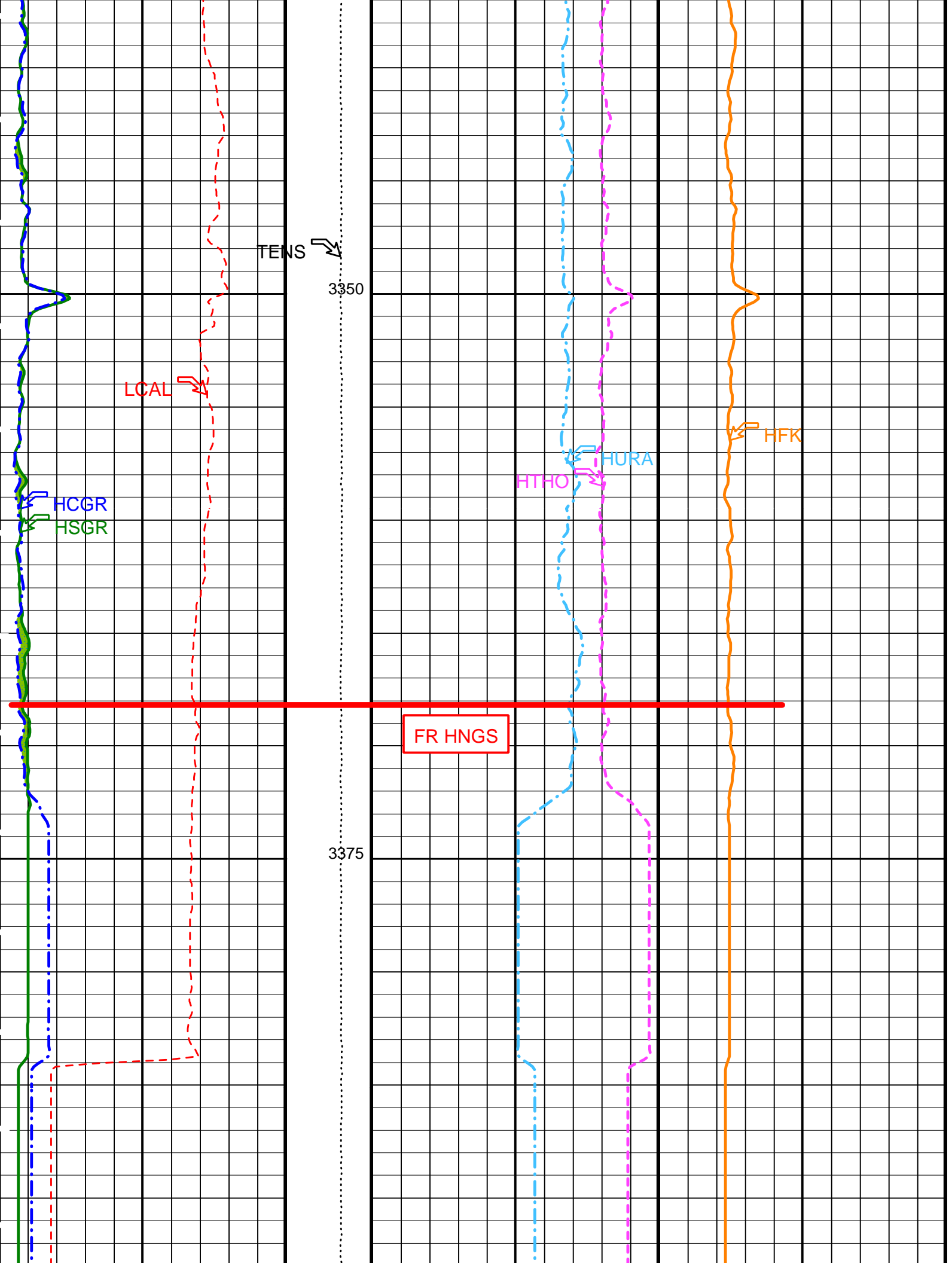
3250

3275

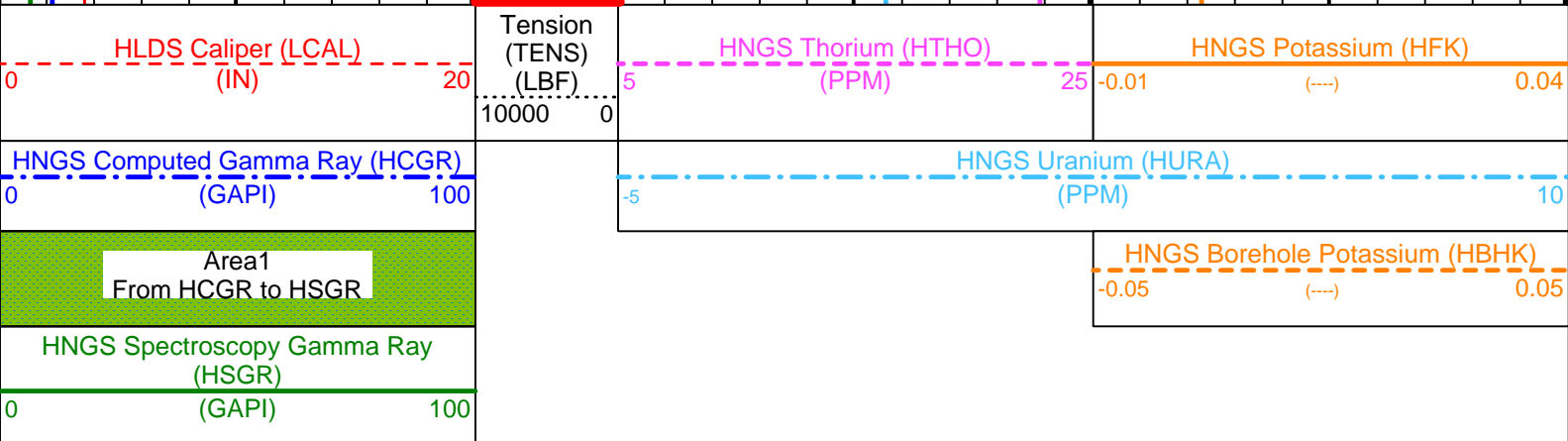
$\lambda$







Total Depth



Time Mark Every 60 S

### Parameters

DLIS Name	Description	Value
	DIT-E: Dual Induction - E	
BHS	Borehole Status	OPEN
GCSE	Generalized Caliper Selection	LCAL
	APS-BA: Accelerator-Porosity Tool	
BHS	Borehole Status	OPEN
GCSE	Generalized Caliper Selection	LCAL
	HNGS-BA: Hostile Natural Gamma Ray Sonde	
BAR1	HNGS Detector 1 Barite Constant	1
BAR2	HNGS Detector 2 Barite Constant	1
BHK	HNGS Borehole Potassium Correction Concentration	0
BHS	Borehole Status	OPEN
CSD1	Inner Casing Outer Diameter	0 IN
CSD2	Outer Casing Outer Diameter	0 IN
CSW1	Inner Casing Weight	0 LB/F
CSW2	Outer Casing Weight	0 LB/F
DBCC	HNGS Barite Constant Correction Flag	NONE
GCSE	Generalized Caliper Selection	LCAL
H1P	HNGS Detector 1 Allow/Disallow In Processing	ALLOW
H2P	HNGS Detector 2 Allow/Disallow In Processing	ALLOW
HABK	HNGS Borehole Potassium Running Average	-0.0089739
HALF	HNGS Alpha Filter Length	60 IN
HCRB	HNGS Apply Borehole Potassium Correction	NONE
HMWM	Mud Weighting Material	NATU
HNPE	HNGS Processing Enable	YES
S1BI	HNGS Detector 1 Calibration Bismuth Count Rate	1.3 CPS
S2BI	HNGS Detector 2 Calibration Bismuth Count Rate	1.3 CPS
SGRC	HNGS Standard Gamma-Ray Correction Flag	YES
TPOS	Tool Position	ECCE
VBA1	HNGS Detector 1 Variable Barite Factor Running Average	0.833538
VBA2	HNGS Detector 2 Variable Barite Factor Running Average	0.846703
	System and Miscellaneous	
BS	Bit Size	11.438 IN
DFD	Drilling Fluid Density	1.10 G/C3

Format: HNGSYields Vertical Scale: 1:200 Graphics File Created: 11-Apr-2003 05:53

### OP System Version: 10C0-306

MCM

DIT-E	10C0-306	DTA-A	10C0-306
HLDS	SPC-2277-NUCL_b	NPLC-B	OP10-KP1
APS-BA	SPC-2277-NUCL_b	HNGS-BA	SPC-2277-NUCL_b
DTC-H	10C0-306		

### Output DLIS Files

DEFAULT	PI_LDL_APS_NGS_028LUP	FN:5	PRODUCER	11-Apr-2003 05:53
TCOMBO_CUST	PI_LDL_APS_NGS_028LUP	FN:6	PRODUCER	11-Apr-2003 05:53

# Output DLIS Files

DEFAULT	PI_LDL_APS_NGS_029LUP	FN:7	PRODUCER	11-Apr-2003 07:21	3397.0 M	3338.7 M
TCOMBO_CUST	PI_LDL_APS_NGS_029LUP	FN:8	PRODUCER	11-Apr-2003 07:21	3397.0 M	3338.8 M

OP System Version: 10C0-306  
MCM

**REPEAT UP LOG**

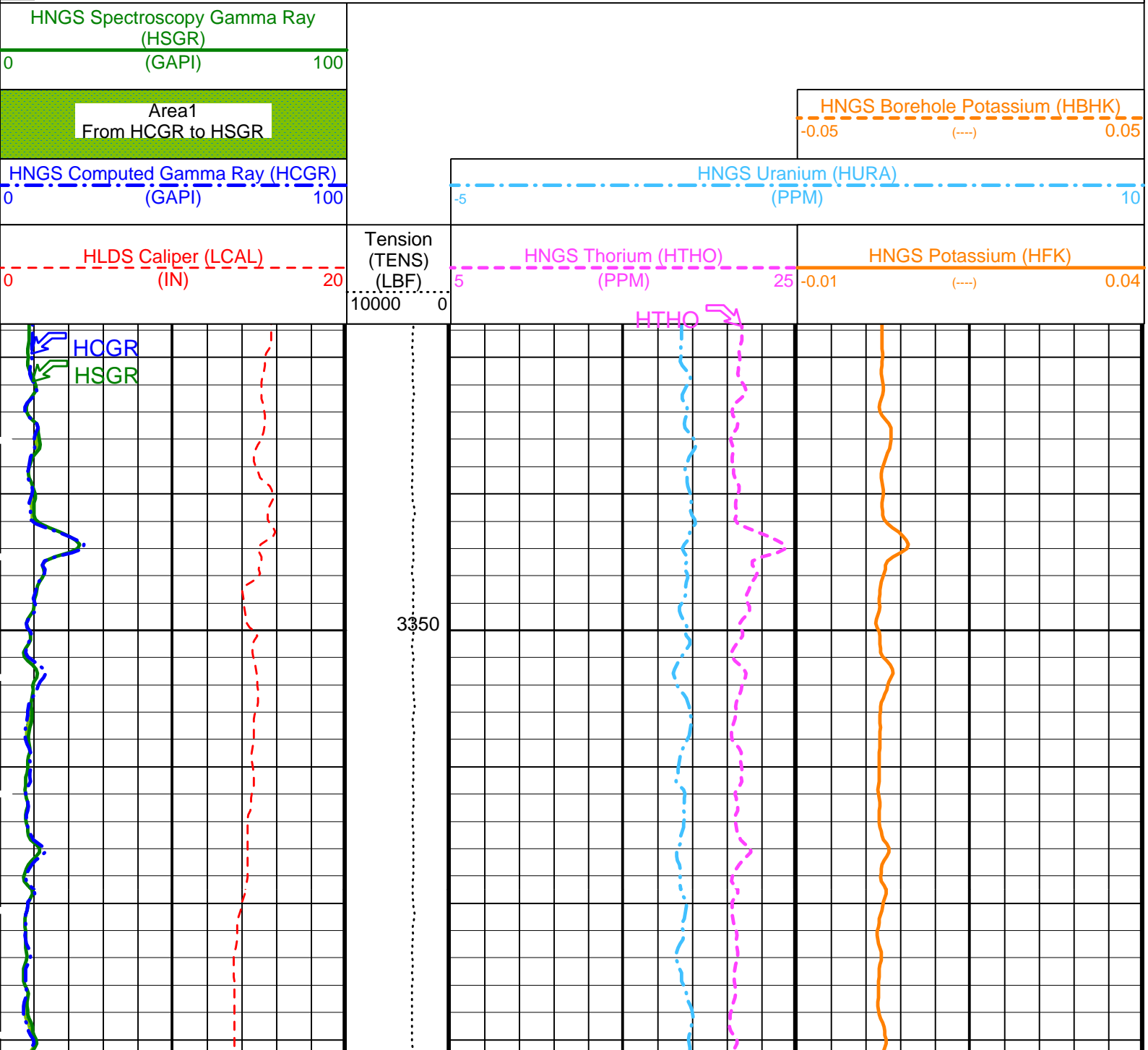
DIT-E	10C0-306	DTA-A	10C0-306
HLDS	SPC-2277-NUCL_b	NPLC-B	OP10-KP1
APS-BA	SPC-2277-NUCL_b	HNGS-BA	SPC-2277-NUCL_b
DTC-H	10C0-306		

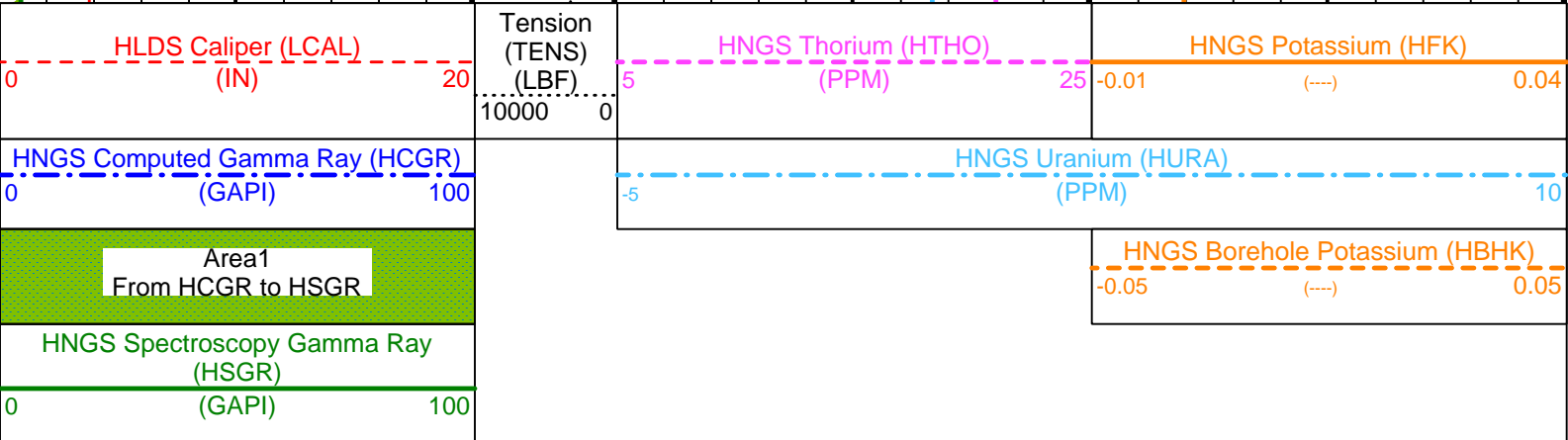
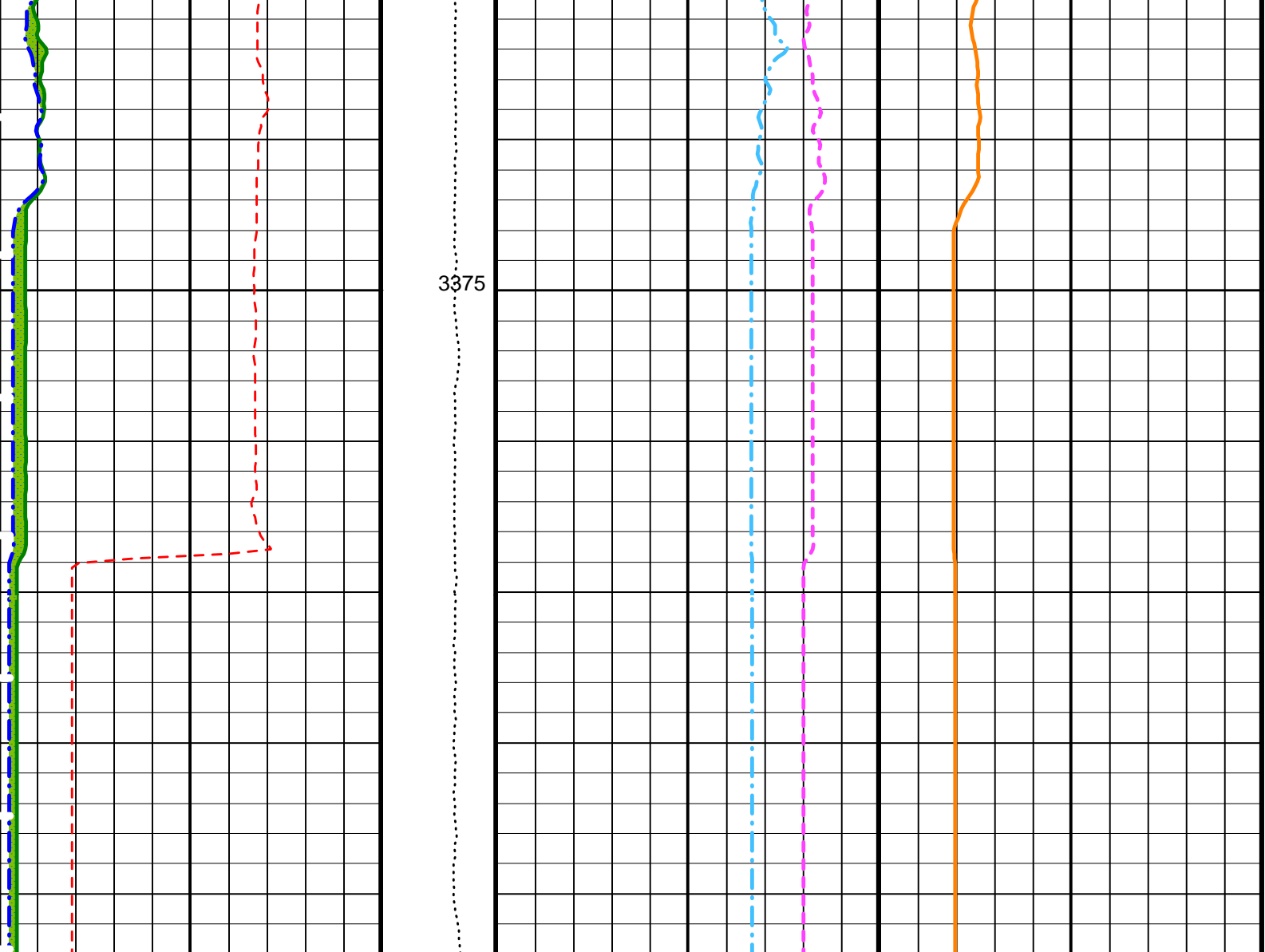
## Changed Parameter Summary

DLIS Name	New Value	Previous Value	Depth & Time
GCSE	LCAL	BS	3148.9 07:23:06

PIP SUMMARY

Time Mark Every 60 S





PIP SUMMARY

Time Mark Every 60 S

Parameters		
DLIS Name	Description	Value
BHS	DIT-E: Dual Induction - E	
BHS	Borehole Status	OPEN
GCSE	Generalized Caliper Selection	BS
APS-BA: Accelerator-Porosity Tool		
BHS	Borehole Status	OPEN
GCSE	Generalized Caliper Selection	BS
HNGS-BA: Hostile Natural Gamma Ray Sonde		
BAR1	HNGS Detector 1 Barite Constant	1
BAR2	HNGS Detector 2 Barite Constant	1
BHK	HNGS Borehole Potassium Correction Concentration	0

BHS	Borehole Status	OPEN	
CSD1	Inner Casing Outer Diameter	0	IN
CSD2	Outer Casing Outer Diameter	0	IN
CSW1	Inner Casing Weight	0	LB/F
CSW2	Outer Casing Weight	0	LB/F
DBCC	HNGS Barite Constant Correction Flag	NONE	
GCSE	Generalized Caliper Selection	BS	
H1P	HNGS Detector 1 Allow/Disallow In Processing	ALLOW	
H2P	HNGS Detector 2 Allow/Disallow In Processing	ALLOW	
HABK	HNGS Borehole Potassium Running Average	-0.00132207	
HALF	HNGS Alpha Filter Length	60	IN
HCRB	HNGS Apply Borehole Potassium Correction	NONE	
HMWM	Mud Weighting Material	NATU	
HNPE	HNGS Processing Enable	YES	
S1BI	HNGS Detector 1 Calibration Bismuth Count Rate	1.3	CPS
S2BI	HNGS Detector 2 Calibration Bismuth Count Rate	1.3	CPS
SGRC	HNGS Standard Gamma-Ray Correction Flag	YES	
TPOS	Tool Position	ECCE	
VBA1	HNGS Detector 1 Variable Barite Factor Running Average	0.944171	
VBA2	HNGS Detector 2 Variable Barite Factor Running Average	1.09247	
System and Miscellaneous			
BS	Bit Size	11.438	IN
DFD	Drilling Fluid Density	1.10	G/C3

Format: HNGSYields    Vertical Scale: 1:200    Graphics File Created: 11-Apr-2003 07:21

## OP System Version: 10C0-306

MCM

DIT-E	10C0-306	DTA-A	10C0-306
HLDS	SPC-2277-NUCL_b	NPLC-B	OP10-KP1
APS-BA	SPC-2277-NUCL_b	HNGS-BA	SPC-2277-NUCL_b
DTC-H	10C0-306		

### Output DLIS Files

DEFAULT	PI_LDL_APS_NGS_029LUP	FN:7	PRODUCER	11-Apr-2003 07:21
TCOMBO_CUST	PI_LDL_APS_NGS_029LUP	FN:8	PRODUCER	11-Apr-2003 07:21

**Company:** Lamont Doherty

**Schlumberger**

**Well:** Leg 208, Site 1265A

**Field:** Walvis Ridge

**Country:** Africa

**Ocean:** Atlantic

Phasor Induction  
Natural Gamma Ray