

ODP Leg 146 - Hole 889A

The following figure shows the main logs recorded in Hole 889A during ODP Leg 146. All the data displayed can be downloaded from the ODP logging database:

<http://brg.ideo.columbia.edu/data/odp/leg146/889A>

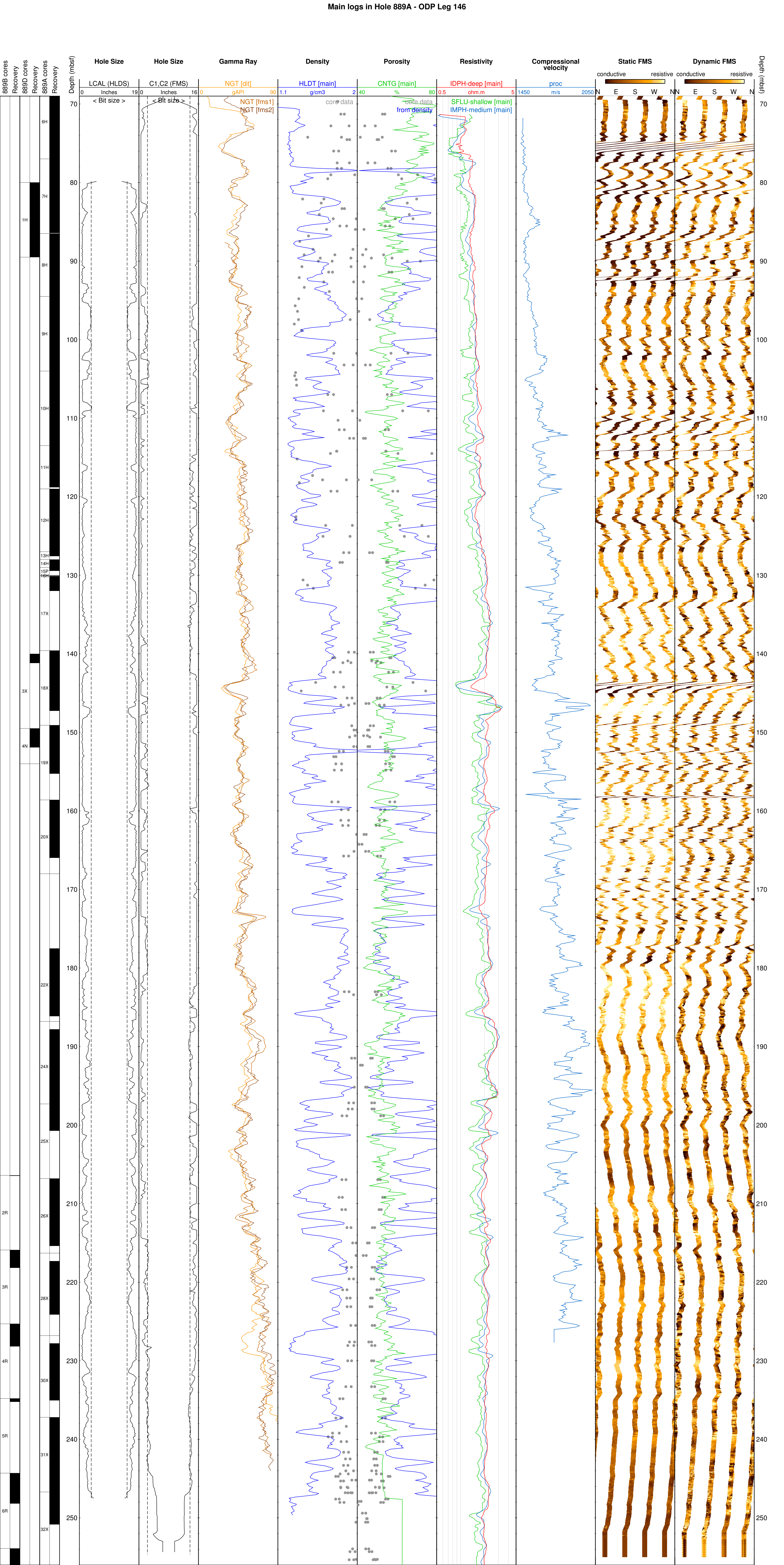
The figure was generated automatically, including the the estimation of ranges used for the data, and regardless of their quality. To get a more complete assessment of the quality of the data and a description of the processing, check the processing documentation:

http://brg.ideo.columbia.edu/data/odp/leg146/889A/documents/146-889A_info-std.html

The logs displayed are the main data recorded by each of the tools deployed. The gamma ray curves were acquired with each tool deployment and were used to match depth across all tools and passes.

The resistivity curves show the measurements made by the DIT at several depths of investigation (shallow, deep,...) during the longest pass.

The labels for each curve are derived from the name of the file in the database used for the figure.



ODP Leg 146 - Hole 889B

The following figures show the main logs recorded in Hole 889B during ODP Leg 146.

All the data displayed can be downloaded from the ODP logging database:

<http://brg.ldeo.columbia.edu/data/odp/leg146/889B>

The figures were generated automatically, including the estimation of ranges used for the data, and regardless of their quality. To get a more complete assessment of the quality of the data and a description of the processing, check the processing documentation:

http://brg.ldeo.columbia.edu/data/odp/leg146/889B/documents/146-889B_info-std.html

Each measurement was recorded during several passes, acquired while lowering the tool string down the hole or while pulling it uphole.

The first figure displays the data over the longest pass for each type of measurement. In this figure, the resistivity curves show the measurements made by the DIT at several depths of investigation (shallow, deep,...) during the longest pass.

The second figure combines all the data from all passes for each measurement. The resistivity curves in this figure are for the deepest depth of investigation available from the tool(s) used.

The labels for each curve are derived from the name of the file in the database used for the figure.

The core data shown were collected from holes at the same site.

