

## ODP Leg 159 - Hole 960A

The following figure shows the main logs recorded in Hole 960A during ODP Leg 159. All the data displayed can be downloaded from the ODP logging database:

<http://brg.ldeo.columbia.edu/data/odp/leg159/960A>

The figure was generated automatically, including the the estimation of ranges used for the data, and regardless of their quality. To get a more complete assessment of the quality of the data and a description of the processing, check the processing documentation:

[http://brg.ldeo.columbia.edu/data/odp/leg159/960A/documents/159-960A\\_info-std.html](http://brg.ldeo.columbia.edu/data/odp/leg159/960A/documents/159-960A_info-std.html)

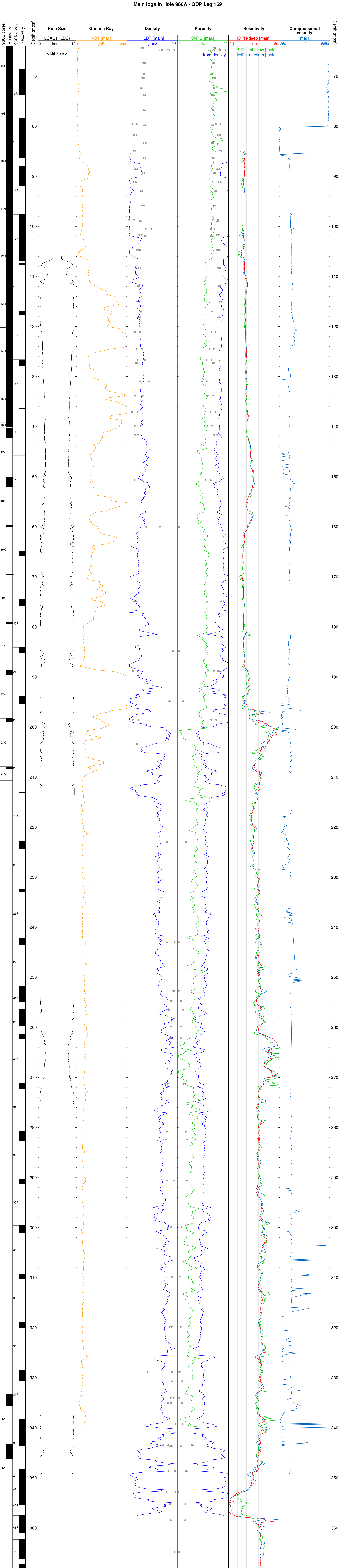
The logs displayed are the main data recorded by each of the tools deployed.

The resistivity curves show the measurements made by the DIT at several depths of investigation (shallow, deep,...) during the longest pass.

The labels for each curve are derived from the name of the file in the database used for the figure.

The core data shown were collected from holes at the same site.

Main logs in Hole 960A - ODP Leg 159



## ODP Leg 159 - Hole 960C

The following figure shows the main logs recorded in Hole 960C during ODP Leg 159. All the data displayed can be downloaded from the ODP logging database:

<http://brg.ideo.columbia.edu/data/odp/leg159/960C>

The figure was generated automatically, including the the estimation of ranges used for the data, and regardless of their quality. To get a more complete assessment of the quality of the data and a description of the processing, check the processing documentation:

[http://brg.ideo.columbia.edu/data/odp/leg159/960C/documents/159-960C\\_info-std.html](http://brg.ideo.columbia.edu/data/odp/leg159/960C/documents/159-960C_info-std.html)

The logs displayed are the main data recorded by each of the tools deployed. The gamma ray curves were acquired with each tool deployment and were used to match depth across all tools and passes.

The resistivity curves show the measurements made by the DIT at several depths of investigation (shallow, deep,...) during the longest pass.

The labels for each curve are derived from the name of the file in the database used for the figure.



Main logs in Hole 960C - ODP Leg 159

