

## ODP Leg 188 - Hole 1167A

The following figure shows the main logs recorded in Hole 1167A during ODP Leg 188. All the data displayed can be downloaded from the ODP logging database:

<http://brg.ldeo.columbia.edu/data/odp/leg188/1167A>

The figure was generated automatically, including the the estimation of ranges used for the data, and regardless of their quality. To get a more complete assessment of the quality of the data and a description of the processing, check the processing documentation:

[http://brg.ldeo.columbia.edu/data/odp/leg188/1167A/documents/188-1167A\\_info-std.html](http://brg.ldeo.columbia.edu/data/odp/leg188/1167A/documents/188-1167A_info-std.html)

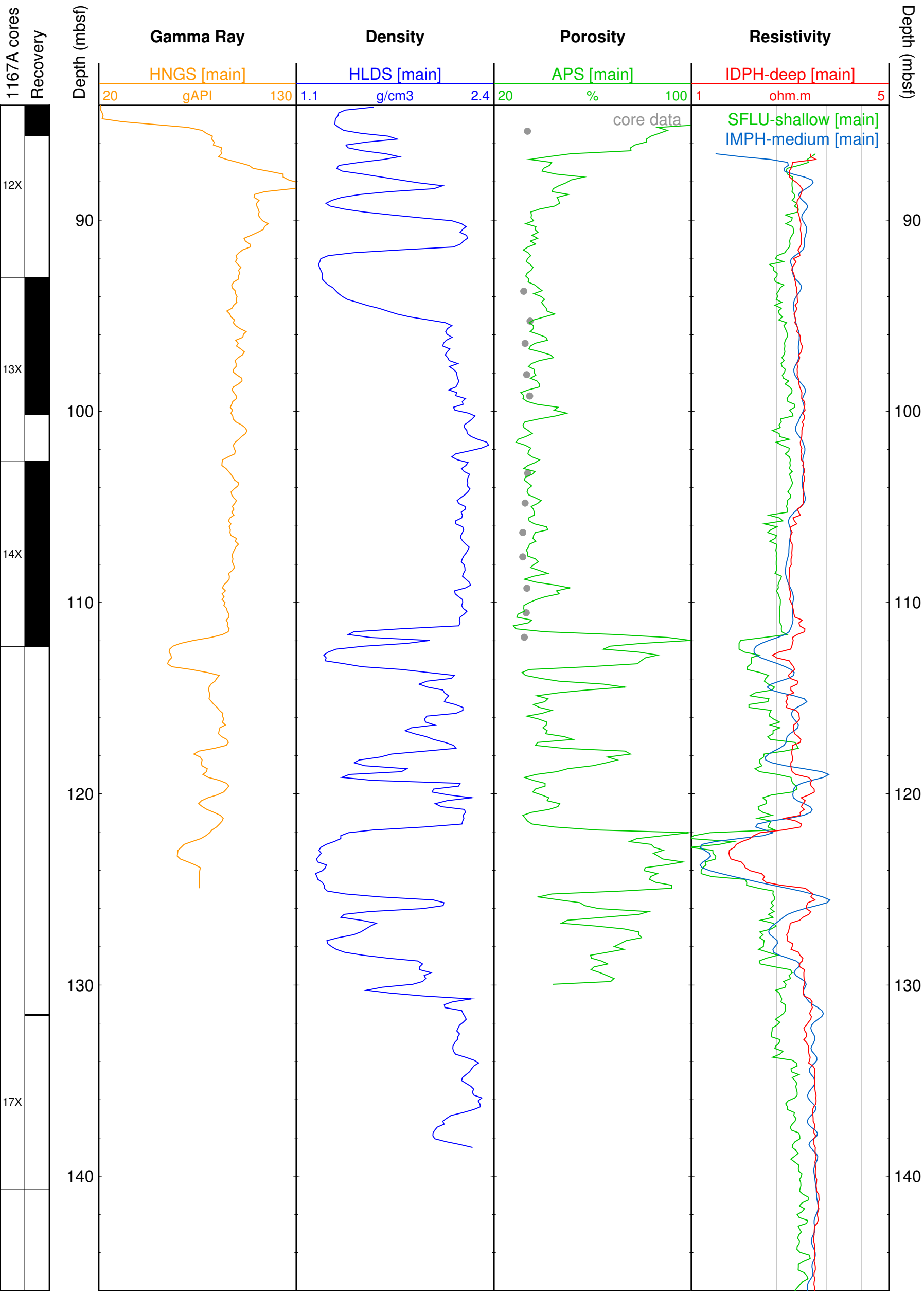
The logs displayed are the main data recorded by each of the tools deployed.

The resistivity curves show the measurements made by the DIT at several depths of investigation (shallow, deep,...) during the longest pass.

The labels for each curve are derived from the name of the file in the database used for the figure.

The core data shown were collected from holes at the same site.

Main logs in Hole 1167A - ODP Leg 188



## ODP Leg 188 - Hole 1167B

The following figure shows the main LWD (Logging While Drilling) logs recorded in Hole 1167B during ODP Leg 188.

All the data displayed can be downloaded from the ODP logging database:

<http://brg.ldeo.columbia.edu/data/odp/leg188/1167B>

The figure was generated automatically, including the the estimation of ranges used for the data, and regardless of their quality. To get a more complete assessment of the quality of the data and a description of the processing, check the processing documentation:

[http://brg.ldeo.columbia.edu/data/odp/leg188/1167B/documents/188-1167B\\_info-std.html](http://brg.ldeo.columbia.edu/data/odp/leg188/1167B/documents/188-1167B_info-std.html)

The logs displayed are the main data recorded by each of the tools deployed.

The core data shown were collected from holes at the same site.

