

ODP Leg 193 - Hole 1188B

The following figure shows the main LWD (Logging While Drilling) logs recorded in Hole 1188B during ODP Leg 193.

All the data displayed can be downloaded from the ODP logging database:

<http://brg.ldeo.columbia.edu/data/odp/leg193/1188B>

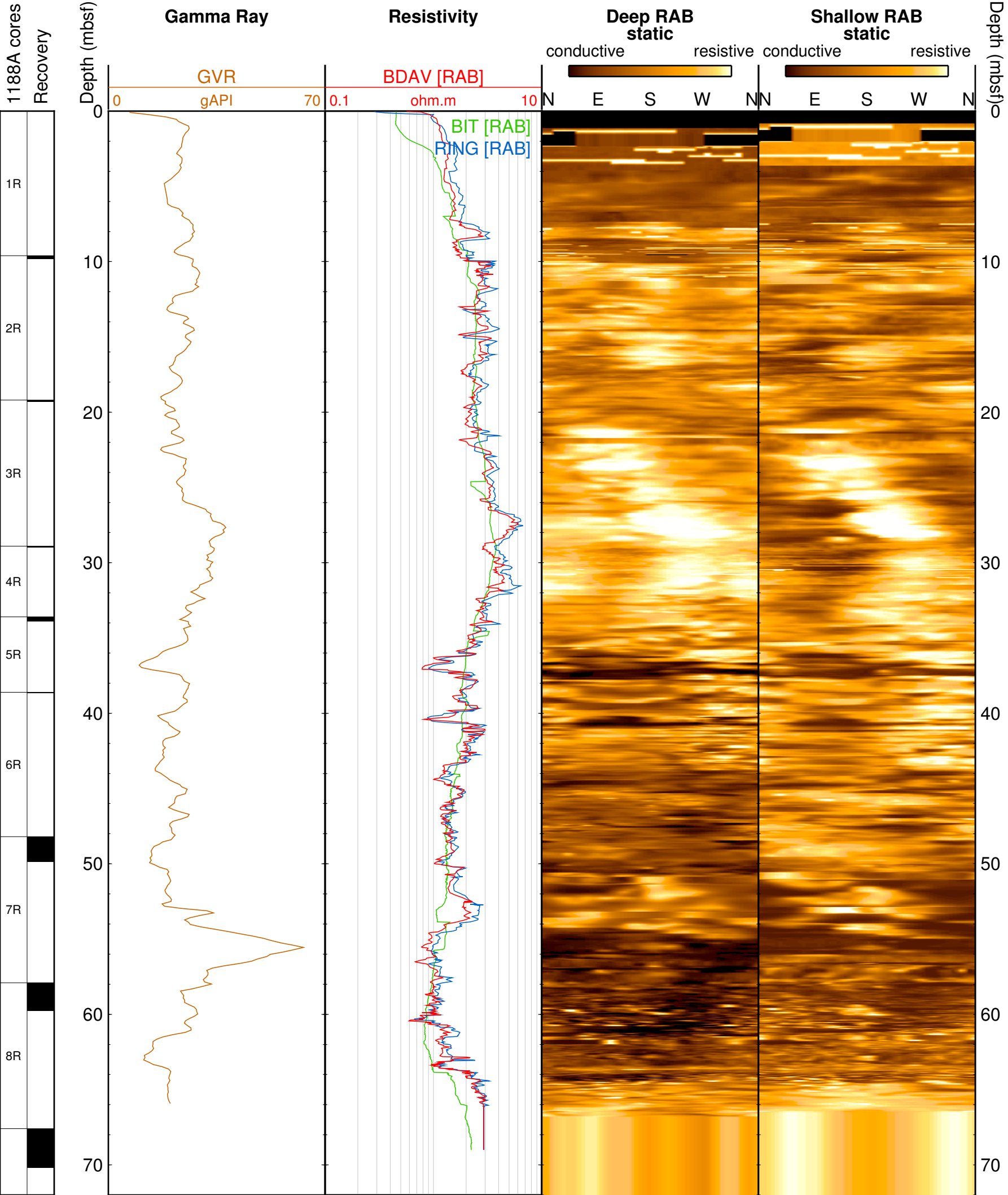
The figure was generated automatically, including the the estimation of ranges used for the data, and regardless of their quality. To get a more complete assessment of the quality of the data and a description of the processing, check the processing documentation:

http://brg.ldeo.columbia.edu/data/odp/leg193/1188B/documents/193-1188B_info-std.html

The logs displayed are the main data recorded by each of the tools deployed.

The core data shown were collected from holes at the same site.

Logging While Drilling [LWD] data - Hole 1188B - ODP Leg 193



ODP Leg 193 - Hole 1188F

The following figures show the main logs recorded in Hole 1188F during ODP Leg 193.

All the data displayed can be downloaded from the ODP logging database:

<http://brg.ldeo.columbia.edu/data/odp/leg193/1188F>

The figures were generated automatically, including the estimation of ranges used for the data, and regardless of their quality. To get a more complete assessment of the quality of the data and a description of the processing, check the processing documentation:

http://brg.ldeo.columbia.edu/data/odp/leg193/1188F/documents/193-1188F_info-std.html

Each measurement was recorded during several passes, acquired while lowering the tool string down the hole or while pulling it uphole.

The first figure displays the data over the longest pass for each type of measurement. In this figure, the resistivity curves show the measurements made by the DIT at several depths of investigation (shallow, deep,...) during the longest pass.

The second figure combines all the data from all passes for each measurement. The resistivity curves in this figure are for the deepest depth of investigation available from the tool(s) used.

The labels for each curve are derived from the name of the file in the database used for the figure.

The core data shown were collected from holes at the same site.

