

ODP Leg 204 - Hole 1249A

The following figure shows the main LWD (Logging While Drilling) logs recorded in Hole 1249A during ODP Leg 204.

All the data displayed can be downloaded from the ODP logging database:

<http://brg.ldeo.columbia.edu/data/odp/leg204/1249A>

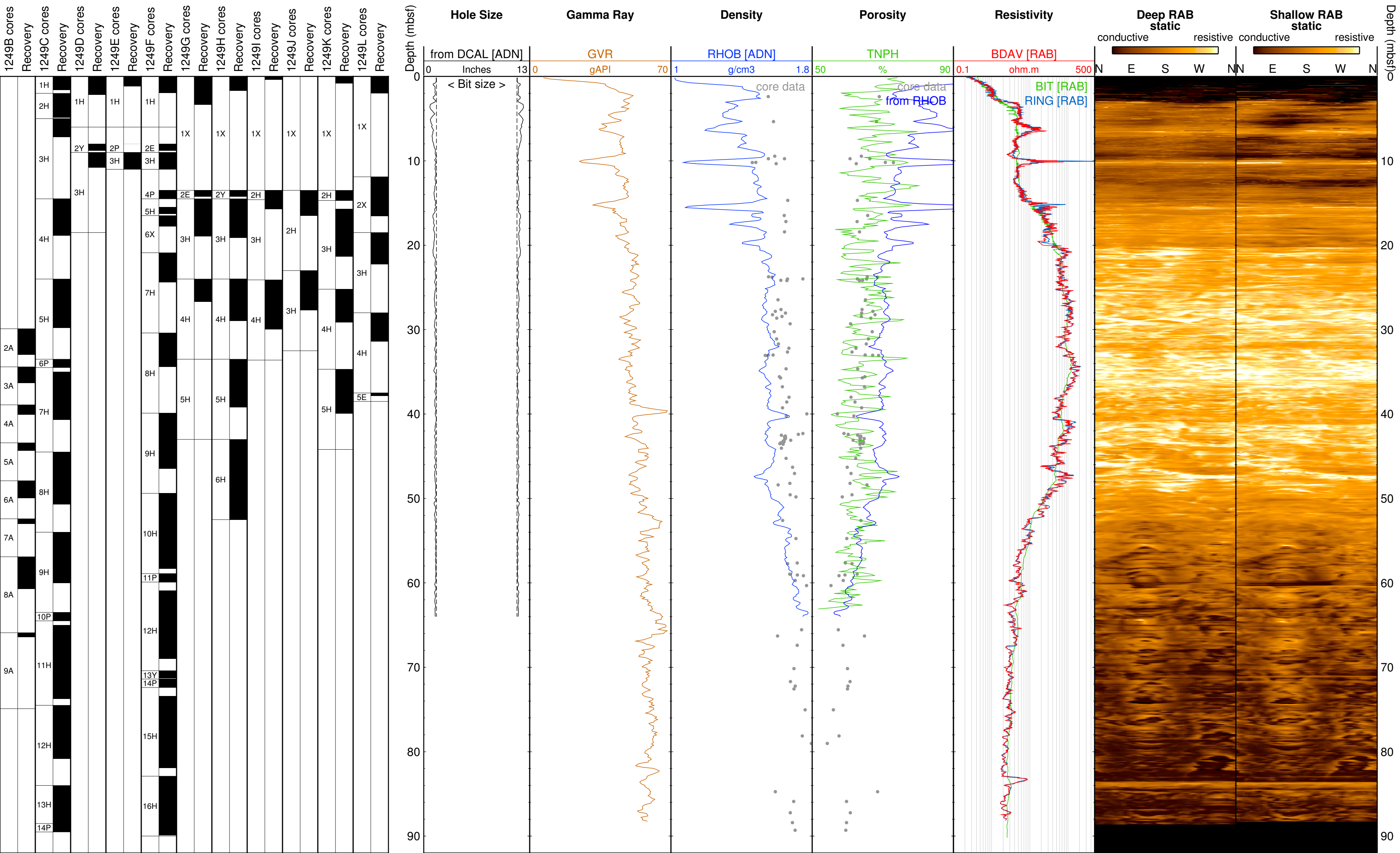
The figure was generated automatically, including the the estimation of ranges used for the data, and regardless of their quality. To get a more complete assessment of the quality of the data and a description of the processing, check the processing documentation:

http://brg.ldeo.columbia.edu/data/odp/leg204/1249A/documents/204-1249A_info-std.html

The logs displayed are the main data recorded by each of the tools deployed.

The core data shown were collected from holes at the same site.

Logging While Drilling [LWD] data - Hole 1249A - ODP Leg 204



ODP Leg 204 - Hole 1249B

The following figure shows the main LWD (Logging While Drilling) logs recorded in Hole 1249B during ODP Leg 204.

All the data displayed can be downloaded from the ODP logging database:

<http://brg.ldeo.columbia.edu/data/odp/leg204/1249B>

The figure was generated automatically, including the the estimation of ranges used for the data, and regardless of their quality. To get a more complete assessment of the quality of the data and a description of the processing, check the processing documentation:

http://brg.ldeo.columbia.edu/data/odp/leg204/1249B/documents/204-1249B_info-std.html

The logs displayed are the main data recorded by each of the tools deployed.

The core data shown were collected from holes at the same site.

Logging While Drilling [LWD] data - Hole 1249B - ODP Leg 204

