

IODP Expedition 336 - Hole U1382A

The following figures show the main logs recorded in Hole U1382A during IODP Expedition 336. All the data displayed can be downloaded from the IODP logging database:

<http://brg.ldeo.columbia.edu/data/iodp-usio/exp336/U1382A>

The figures were generated automatically, including the estimation of ranges used for the data, and regardless of their quality. To get a more complete assessment of the quality of the data and a description of the processing, check the processing documentation:

http://brg.ldeo.columbia.edu/data/iodp-usio/exp336/U1382A/documents/336-U1382A_info-std-wireline.html

Each measurement was recorded during several passes, acquired while lowering the tool string down the hole or while pulling it uphole.

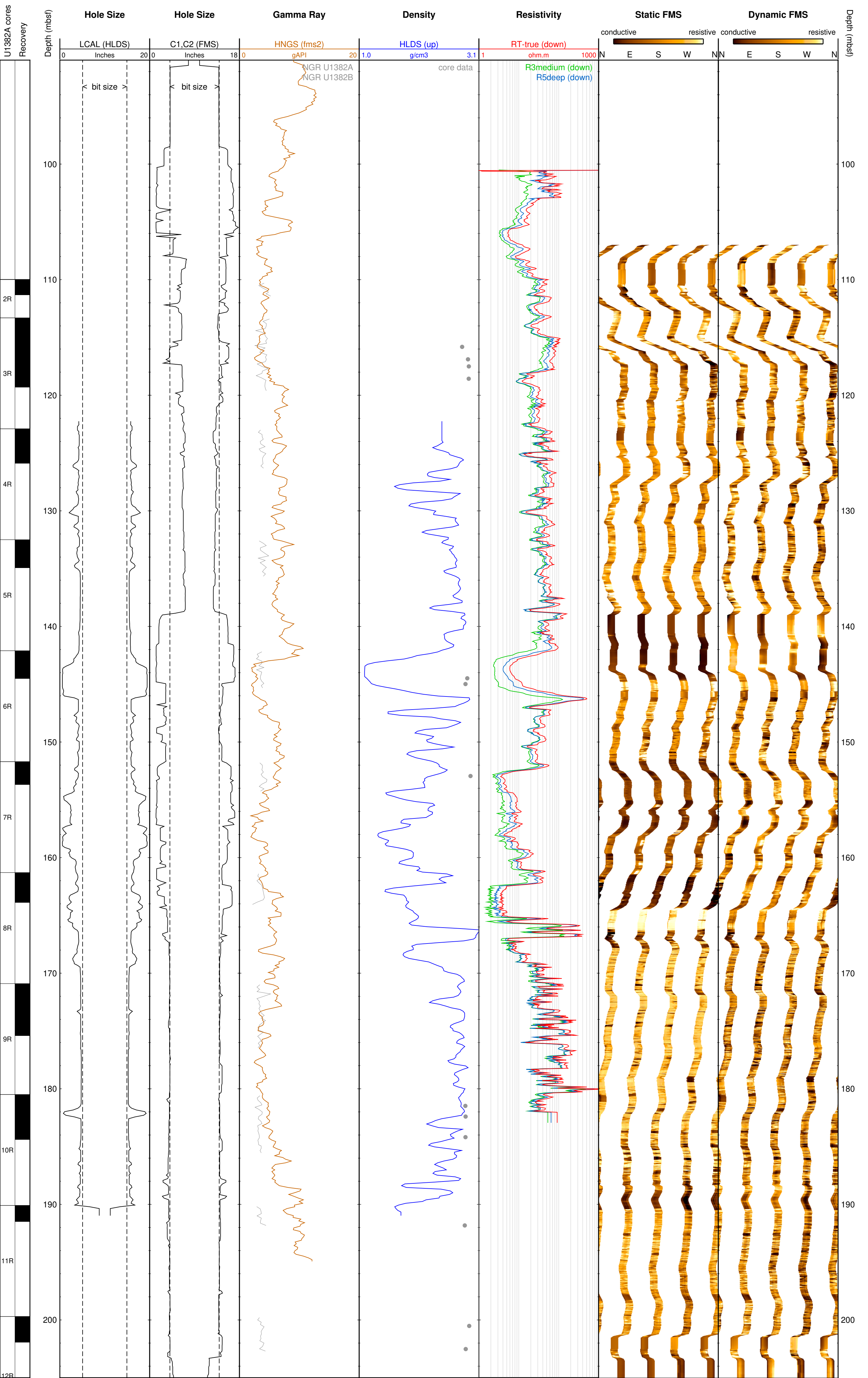
The first figure displays the data over the longest pass for each type of measurement. In this figure, the resistivity curves show the measurements made by the HRLA at several depths of investigation (shallow, deep,...) during the longest pass.

The second figure combines all the data from all passes for each measurement. The resistivity curves in this figure are for the deepest depth of investigation available from the tool(s) used.

The labels for each curve are derived from the name of the file in the database used for the figure.

The core data shown were collected from holes at the same site.

Longest logging passes in Hole U1382A - IODP Expedition 336



U1382A cores
Recovery

2R
3R
4R
5R
6R
7R
8R
9R
10R
11R
12R

