

IODP Expedition 395C - Hole U1563B

The following figures show the main logs recorded in Hole U1563B during IODP Expedition 395C. All the data displayed can be downloaded from the IODP logging database:

<http://brg.ldeo.columbia.edu/data/iodp-usio/exp395C/U1563B>

The figures were generated automatically, including the estimation of ranges used for the data, and regardless of their quality. To get a more complete assessment of the quality of the data and a description of the processing, check the processing documentation:

http://brg.ldeo.columbia.edu/data/iodp-usio/exp395C/U1563B/documents/395C-U1563B_info-std-wireline.h

Each measurement was recorded during several passes, acquired while lowering the tool string down the hole or while pulling it uphole.

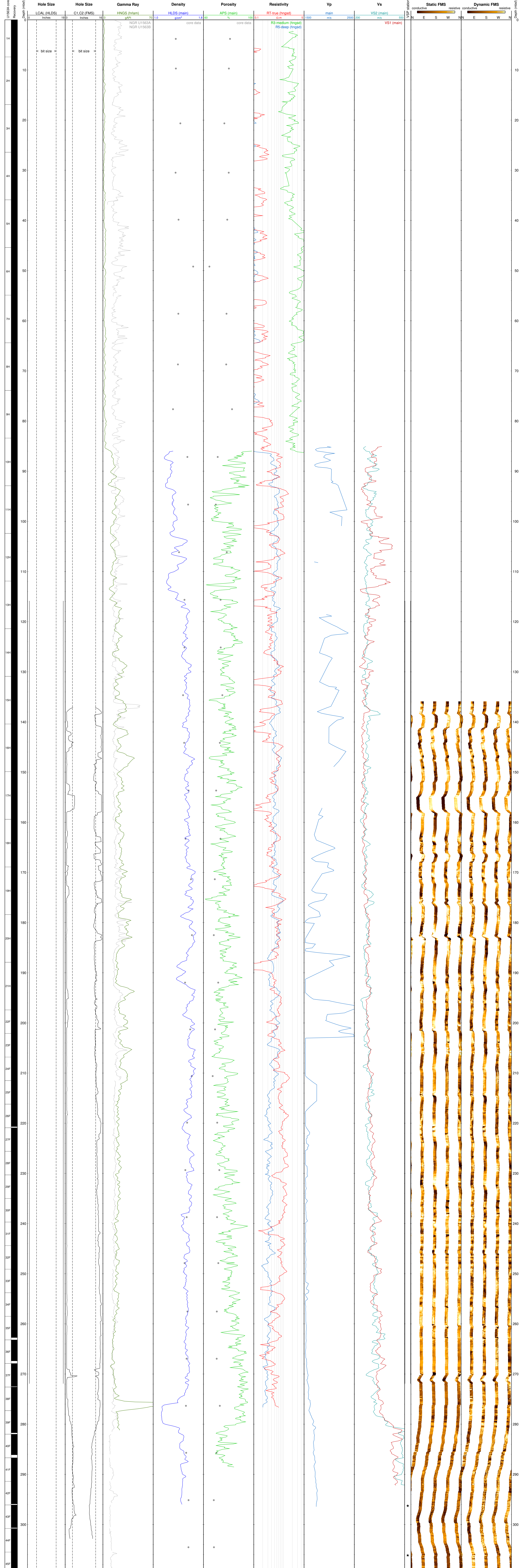
The first figure displays the data over the longest pass for each type of measurement. In this figure, the resistivity curves show the measurements made by the HRLA at several depths of investigation (shallow, deep,...) during the longest pass.

The second figure combines all the data from all passes for each measurement. The resistivity curves in this figure are for the deepest depth of investigation available from the tool(s) used.

The labels for each curve are derived from the name of the file in the database used for the figure.

The core data shown were collected from holes at the same site.

Longest logging passes in Hole U1563B - IODP Expedition 395C



All logging passes in Hole U1563B - IODP Expedition 395C

