

## ODP Leg 101 - Hole 634A

The following figures show the main logs recorded in Hole 634A during ODP Leg 101. All the data displayed can be downloaded from the ODP logging database:

<http://brg.ldeo.columbia.edu/data/odp/leg101/634A>

The figures were generated automatically, including the estimation of ranges used for the data, and regardless of their quality. To get a more complete assessment of the quality of the data and a description of the processing, check the processing documentation:

[http://brg.ldeo.columbia.edu/data/odp/leg101/634A/documents/101-634A\\_info-std.html](http://brg.ldeo.columbia.edu/data/odp/leg101/634A/documents/101-634A_info-std.html)

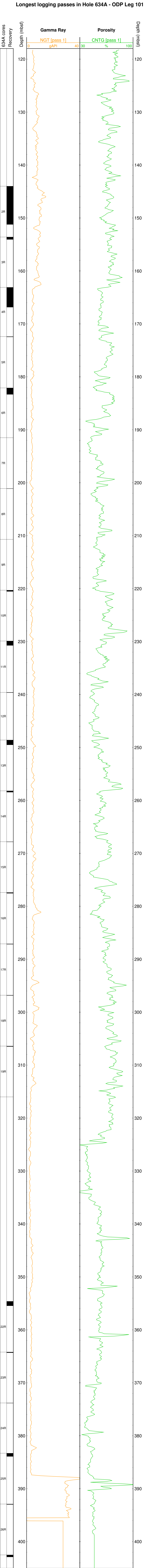
Each measurement was recorded during several passes, acquired while lowering the tool string down the hole or while pulling it uphole.

The first figure displays the data over the longest pass for each type of measurement.

The second figure combines all the data from all passes for each measurement.

The labels for each curve are derived from the name of the file in the database used for the figure.

The core data shown were collected from holes at the same site.



# All logging passes in Hole 634A - ODP Leg 101

