

ODP Leg 129 - Hole 800A

The following figure shows the main logs recorded in Hole 800A during ODP Leg 129. All the data displayed can be downloaded from the ODP logging database:

<http://brg.ideo.columbia.edu/data/odp/leg129/800A>

The figure was generated automatically, including the the estimation of ranges used for the data, and regardless of their quality. To get a more complete assessment of the quality of the data and a description of the processing, check the processing documentation:

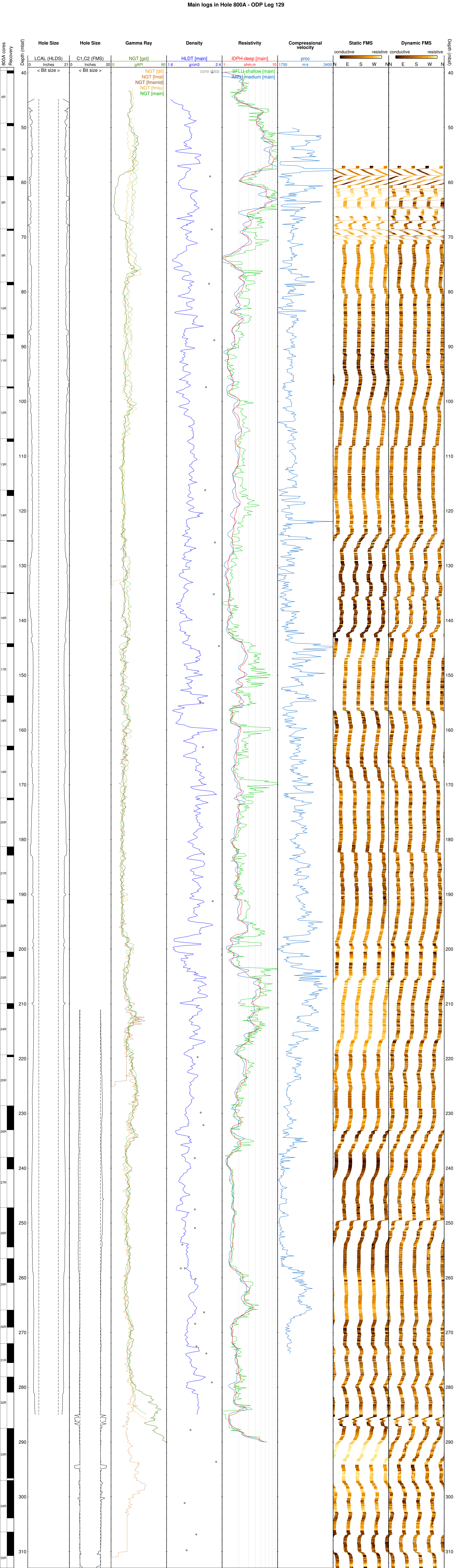
http://brg.ideo.columbia.edu/data/odp/leg129/800A/documents/129-800A_info-std.html

The logs displayed are the main data recorded by each of the tools deployed. The gamma ray curves were acquired with each tool deployment and were used to match depth across all tools and passes.

The resistivity curves show the measurements made by the DIT at several depths of investigation (shallow, deep,...) during the longest pass.

The labels for each curve are derived from the name of the file in the database used for the figure.

Main logs in Hole 800A - ODP Leg 129



Hole Size

LCAL (HLDS)

Inches

21

0

< Bit size >

Hole Size

C1,C2 (FMS)

Inches

20

0

< Bit size >

Gamma Ray

NGT [gst]

gAPI

90

0

NGT [dit]

NGT [fmsl]

NGT [fmsmid]

NGT [fmsu]

NGT [main]

Density

HLDT [main]

g/cm3

2.4

1.6

core data

Resistivity

IDPH-deep [main]

ohm.m

10

1

SFLU-shallow [main]

IMBH-medium [main]

Compressional velocity

proc

m/s

1750

3400

Static FMS

conductive

resistive

N

E

S

W

Dynamic FMS

conductive

resistive

NN

E

S

W

N

Depth (mbsf)

0

10

20

30

40

50

60

70

80

90

100

110

120

130

140

150

160

170

180

190

200

210

220

230

240

250

260

270

280

290

300

310