

ODP Leg 183 - Hole 1137A

The following figure shows the main logs recorded in Hole 1137A during ODP Leg 183. All the data displayed can be downloaded from the ODP logging database:

<http://brg.ideo.columbia.edu/data/odp/leg183/1137A>

The figure was generated automatically, including the the estimation of ranges used for the data, and regardless of their quality. To get a more complete assessment of the quality of the data and a description of the processing, check the processing documentation:

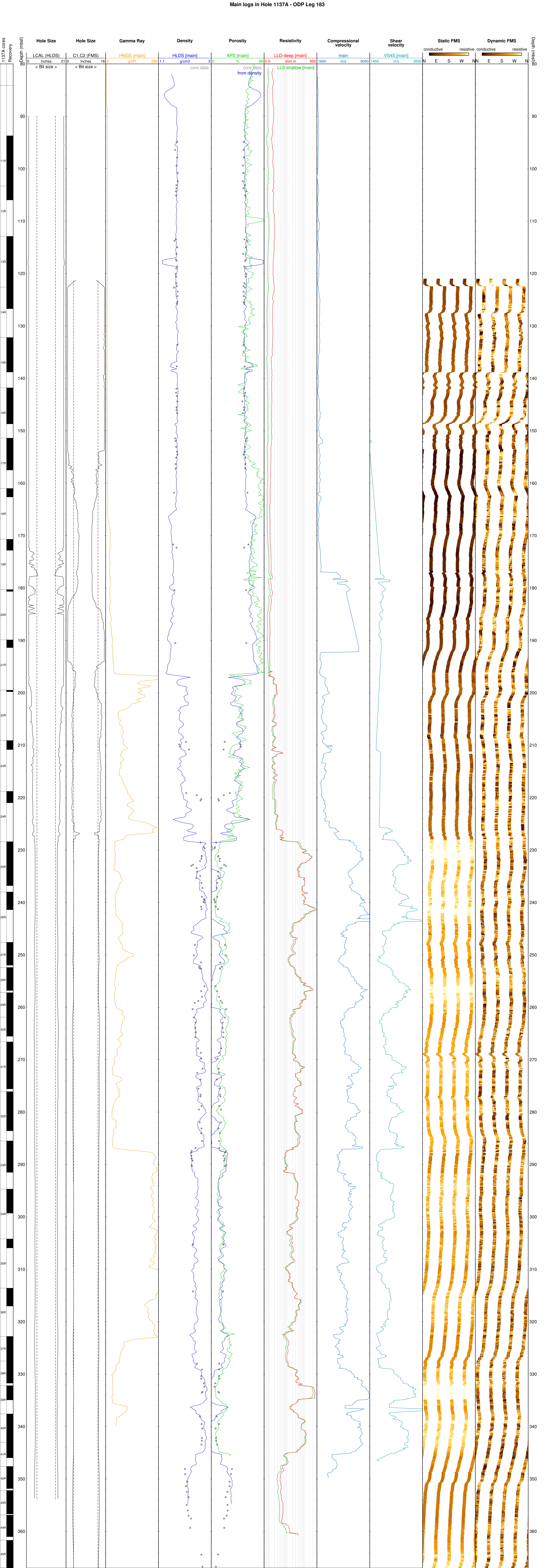
http://brg.ideo.columbia.edu/data/odp/leg183/1137A/documents/183-1137A_info-std.html

The logs displayed are the main data recorded by each of the tools deployed.

The resistivity curves show the measurements made by the DLL at several depths of investigation (shallow, deep,...) during the longest pass.

The labels for each curve are derived from the name of the file in the database used for the figure.

The core data shown were collected from holes at the same site.



Hole Size

LCAL (HLDS)

Inches

21

0

< Bit size >

Hole Size

C1,C2 (FMS)

Inches

16

< Bit size >

Gamma Ray

HNGS [main]

gAPI

0

200

Density

HLDS [main]

g/cm3

1.1

core data

Porosity

APS [main]

%

0

90

core data

from density

Resistivity

LLD-deep [main]

ohm.m

0.5

500

LLS-shallow [main]

Compressional velocity

main

m/s

1600

6050

Shear velocity

VS4S [main]

m/s

1450

3550

Static FMS

conductive

resistive

N

E

S

W

NN

Dynamic FMS

conductive

resistive

NN

E

S

W

NN

Depth (mbsf)

0

90

100

110

120

130

140

150

160

170

180

190

200

210

220

230

240

250

260

270

280

290

300

310

320

330

340

350

360