

IODP Expedition 372 - Hole U1518A

The following figure shows the main LWD (Logging While Drilling) logs recorded in Hole U1518A during IODP Expedition 372.

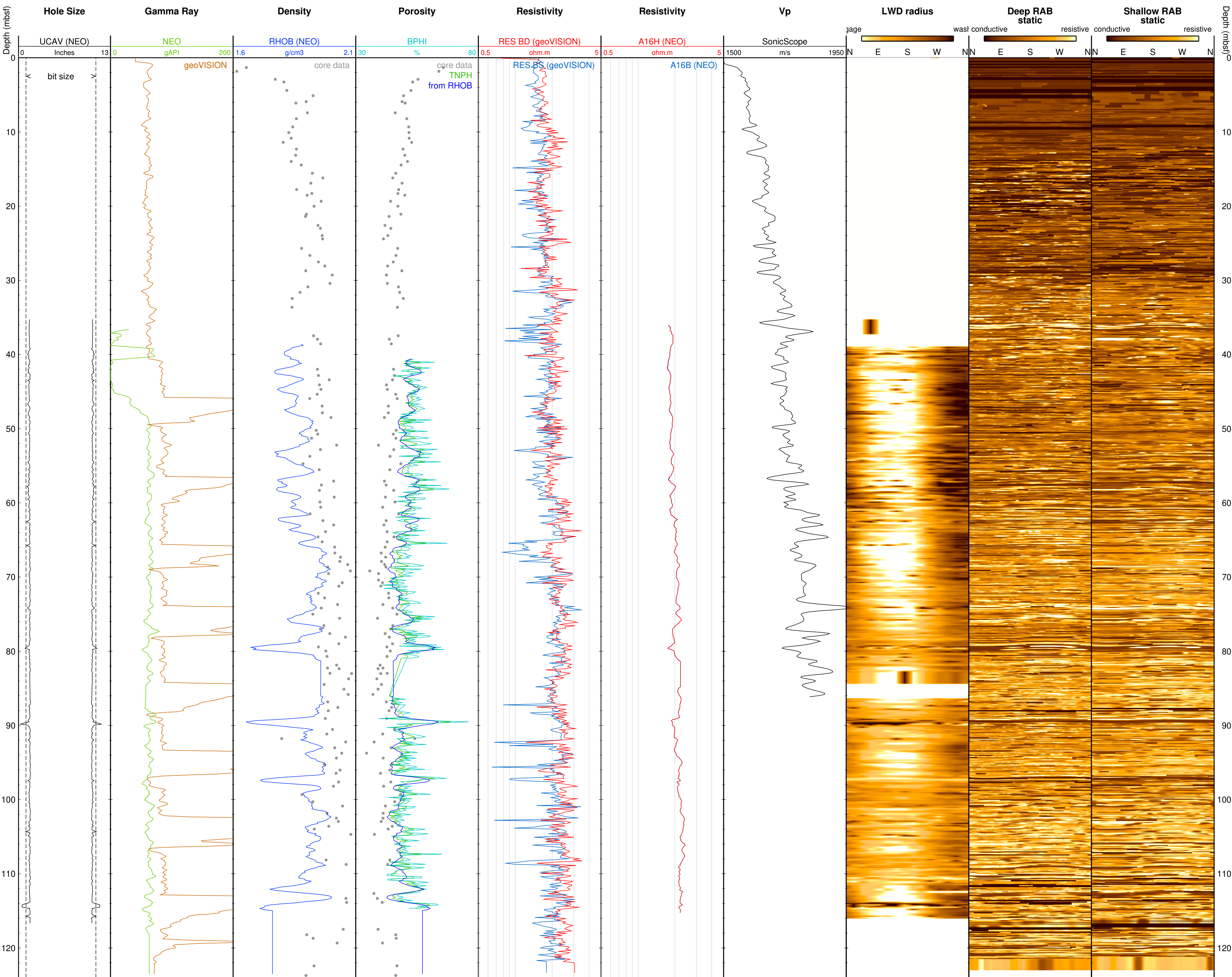
All the data displayed can be downloaded from the IODP logging database:

<http://brg.ldeo.columbia.edu/data/iodp-usio/exp372/U1518A>

The figure was generated automatically, including the the estimation of ranges used for the data, and regardless of their quality. To get a more complete assessment of the quality of the data and a description of the processing, check the processing documentation:

http://brg.ldeo.columbia.edu/data/iodp-usio/exp372/U1518A/documents/372-U1518A_info-std-lwd.html

The logs displayed are the main data recorded by each of the tools deployed.



IODP Expedition 372 - Hole U1518B

The following figure shows the main LWD (Logging While Drilling) logs recorded in Hole U1518B during IODP Expedition 372.

All the data displayed can be downloaded from the IODP logging database:

<http://brg.ldeo.columbia.edu/data/iodp-usio/exp372/U1518B>

The figure was generated automatically, including the the estimation of ranges used for the data, and regardless of their quality. To get a more complete assessment of the quality of the data and a description of the processing, check the processing documentation:

http://brg.ldeo.columbia.edu/data/iodp-usio/exp372/U1518B/documents/372-U1518B_info-std-lwd.html

The logs displayed are the main data recorded by each of the tools deployed.

